



RESERVOIR PERFORMANCE MONITOR

Baker Atlas

File No: **Company** **WPX ENERGY**

CH089260 **Well** **AP 321-20-695**

API No: **Field** **PARACHUTE**

05045213820000 **County** **GARFIELD** **State** **CO**

Location

20 6S 95W **SHL: 64' FNL & 2493' FWL**

AP 21-20-695 PAD **BHL: 144' FNL & 715' FWL**

NABORS 673

SEC **20** **TWP** **6S** **RGE** **95W**

Other Services

BOND LOG

Permanent Datum **GL** **Elevation** **6909**

Log Measured From **KB** **26** **Above P. D.**

Drill Measured From **KB**

Elevations

KB **6935**

DF

GL **6909**

Date	21/AUG/14	
Run	ONE	
Service Order	US089260	
Depth Driller	9603	
Depth Logger	9568	
Bottom Logged Interval	9558	
Top Logged Interval	5897	
Time Started	12:00	
Time Finished	18:30	
Operator Rig Time	6.5 HOURS	
Type of Fluid in Hole	WATER	
Fluid Density	NA	
Salinity	NA	
Fluid Level	78	
Logged Cement Top	NA	
Wellhead Pressure	0	
Maximum Hole Deviation	NA	
Nominal Logging Speed	10	
Maximum Recorded Temperature	251	
Reference Log	BAKER HUGHES BOND LOG	
Reference Log Date	21/AUG/14	
Equipment No.	Location	GRAND JUNCTION
Recorded By	NEMELL	
Witnessed By	GRAN JACOBS	

- FOLD HERE

In making interpretations of logs, our employees will give the customer the benefit of their best judgement. But since all interpretations are opinions based on inferences from electrical or other measurements, we cannot, and we do not guarantee the accuracy or correctness of any interpretation. We shall not be liable or responsible for any loss, cost, damages, or expenses whatsoever incurred or sustained by the customer resulting from any interpretation made by any of our employees.

Borehole Record		
Bit Size	From	To
13.5	0	2575
8.75	2575	9644

Casing Record				
Size	Weight	Grade	From	To
9.625			0	2575
4.5	11.6	1-80	0	9644

Remarks
All data on this log is shifted and depth matched using the Gamma Ray curve to the Baker Hughes bond log dated 21/AUG/2014 at the client's request.
The depth matching process creates potential for collar lengths to vary from those recorded on other cased hole wireline units without a Gamma Ray reference.
The amount of linear shift is 1 foot.

BHT = 251 °F

SJ = 6191'-6213'

Equipment Data					
Run	Trip	Tool	Series Number	Serial Number	Position
1	1	PCM	8250EA	10397894	FREE
1	1	TEL/CCL	8248ED	10296408	FREE
1	1	GR	2812LA	10274382	FREE
1	1	RPM	8281EA	10190984	FREE
1	1	RPM	8283PA	10414345	FREE
1	1	RPM	8281FA	10401926	FREE
1	1	TEMP	8265XA	2120516	FREE

MAIN SECTION
PNC 3-D MODE

SPL PROCESSING

MEASUREMENT TYPE	PARAMETER	VALUE	UNITS	TOP	BOTTOM
PNC Porosity	Borehole	Cased		5880.214	6480.000
PNC Porosity	Borehole Size	8.750	inch	5880.214	6480.000
PNC Porosity	Casing Size	4.500	inch	5880.214	6480.000
PNC Porosity	Gas Filled	Non Gas Filled		5880.214	6480.000
PNC Porosity	Matrix	Sandstone		5880.214	6480.000
TPS Pressure	Temperature Corr. Source	Fixed (72.00)	degF	5880.214	6480.000
PNC Porosity	Borehole	Cased		6480.000	6810.000
PNC Porosity	Borehole Size	8.750	inch	6480.000	6810.000
PNC Porosity	Casing Size	4.500	inch	6480.000	6810.000
PNC Porosity	Gas Filled	Non Gas Filled		6480.000	6810.000
PNC Porosity	Matrix	Sandstone		6480.000	6810.000
TPS Pressure	Temperature Corr. Source	Fixed (72.00)	degF	6480.000	6810.000
PNC Porosity	Borehole	Cased		6810.000	9572.000
PNC Porosity	Borehole Size	8.750	inch	6810.000	9572.000
PNC Porosity	Casing Size	4.500	inch	6810.000	9572.000
PNC Porosity	Gas Filled	Non Gas Filled		6810.000	9572.000
PNC Porosity	Matrix	Sandstone		6810.000	9572.000
TPS Pressure	Temperature Corr. Source	Fixed (72.00)	degF	6810.000	9572.000

DEPTH OFFSETS

(for Acquired Curves)

SERIES	DEPTH OFFSET	ACQUIRED CURVES
8248ED	-26.519	FLTM
8248ED	-24.519	CCL CHV
2812LA	-21.969	GR
8281XA	-12.702	HVC3Q0 SEQ3 AMA3 AML3 BKX CXS CPT3Q0 CPT3Q2 CPT3Q3 CPT3Q4 ET3 IXS MCS3 MCS3Q0 QCAL3 RGN3 RICX SDA3 SDL3 SGA3 SGL3 STA3 XS ASPEC3 AMB3 AMF3 CHF3 IXSC IXSN RATO23 RICXC RIN13C RIN23 RIN23C SD3D SG3D SGB3 SGF3 WIDTH3 CXSR IXSR XSR RICXR
8281XA	-12.291	HVC2Q0 SEQ2 AMA2 AMB2 AMF2 AML2 BKL CHF2 CLS CPT2Q0 CPT2Q2 CPT2Q3 CPT2Q4 ET2 ILS LS MCS2 MCS2Q0 QCAL2 RGN2 RICL RONE23 RTWO23 SDA2 SDL2 SGA2 SGB2 SGF2 SGK2 SGL2 STA2 ASPEC2 ILSC ILSN WIDTH2 RICLC CLSR ILSR LSR RICLR
8281XA	-12.041	CPRS HVC1Q0 MV SEQ SEQ1 AMA1 AMB1 AME1 AMF1 AML1 BKS CHF1 CSS CORB CORF CPT1Q0 CPT1Q2 CPT1Q2A CPT1Q2B CPT1Q2C CPT1Q3 CPT1Q4 CPT1Q5 ET1 G1 G2 GE1S GE2S ISS MCS1 MCS1Q0 QA1 QCAL1 QM1 RATO RATO13 RBOR RGN1 RICS RIN RONE RPOR RTWO RIN13 RONE13 RTWO13 SALB SC1 SDA1 SDL1 SGA1 SGB1 SGBC SGE1 SGF1 SGFC SGK1 SGL1 SS SS2 STA1 PD1S PD2S PD3S MD1S MD2S MD3S DG1S DG2S DG3S PD1M PD2M PD3M MD1M MD2M MD3M DG1M DG2M DG3M MVS MA MVM FILV IAM TA PVM PVS IAS SSTAT QPD1 QPD2 QPD3 QMD1 QMD2 QMD3 QDG1 QDG2 QDG3 QMA QTA QFILV QMV QPV QIA DERR DCNT QPK1 QSA1 PKS1 ASPEC1 H0C FE2XC ISSC RINC ISSN RDEN WIDTH1 RICSC CSSR G1R G2R ISSR SSR SS2R RATOR RATO13R RBORR RICSR RINR RIN13R RONER RPORR RTWOR
8255XA	-0.792	PTFS PTMS
8255XA	-0.775	SPF1 SPFQ TSCP TSDP
8255XA	0.000	DTEM TEMP TNF
SYSTEM	0.000	TEN TTEN

Created by : MIXED

Plotted by : PlotMgr, v5.4.504

Company : WPX ENERGY

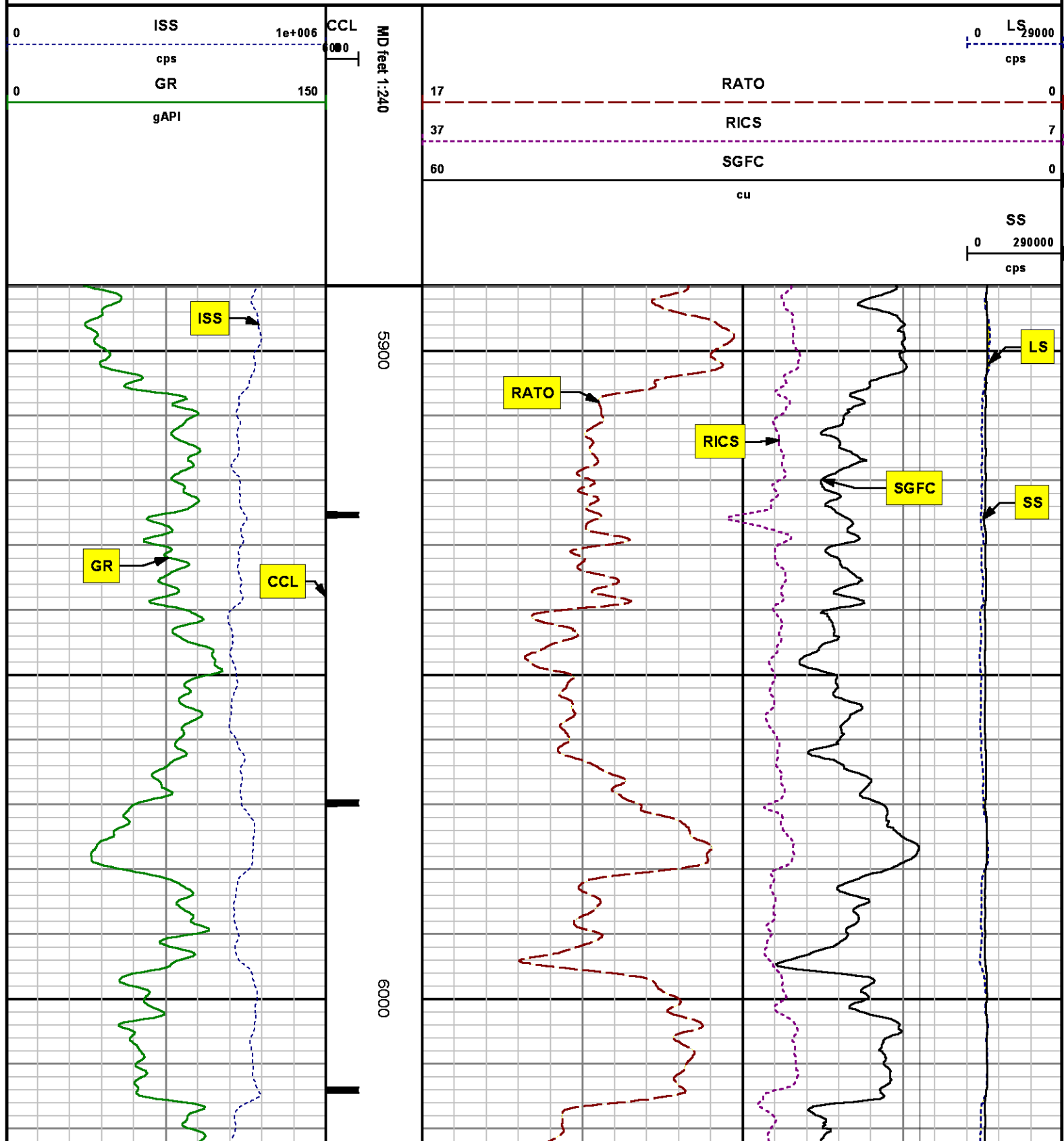
Well : AP 321-20-695

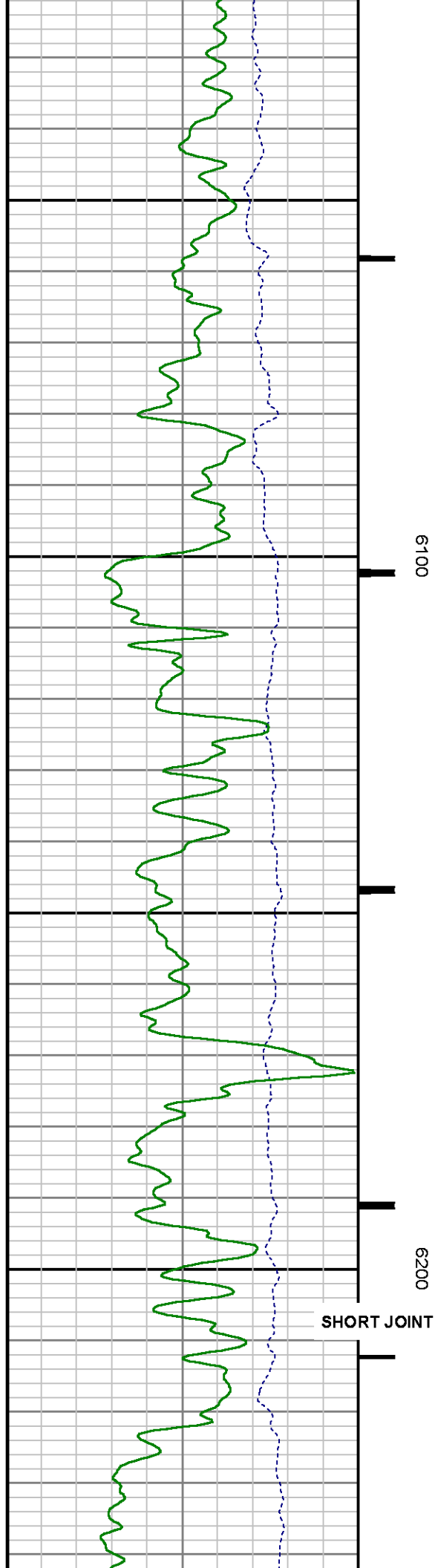
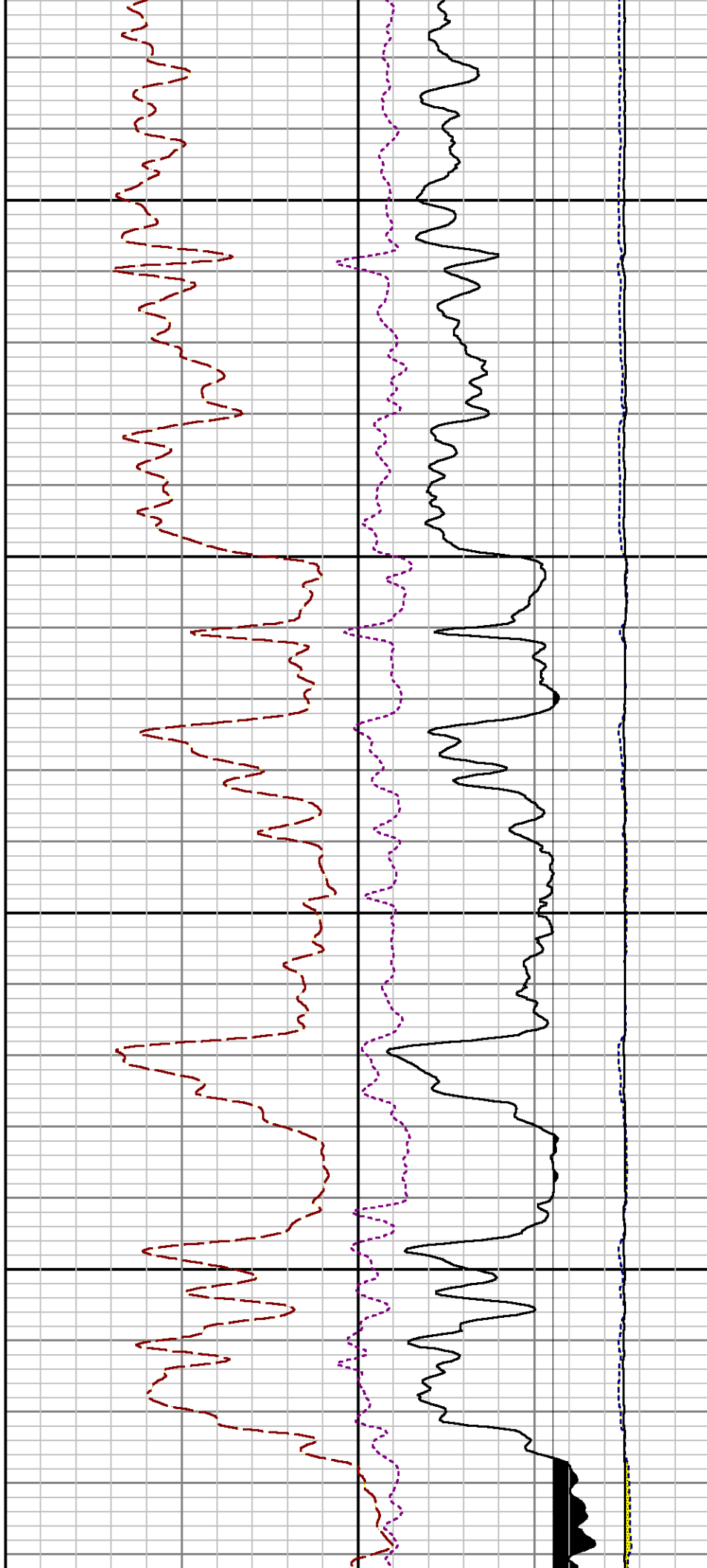
File Name : d:\well\data\wp\ap 321-20-695\rpm321\main3.xtf

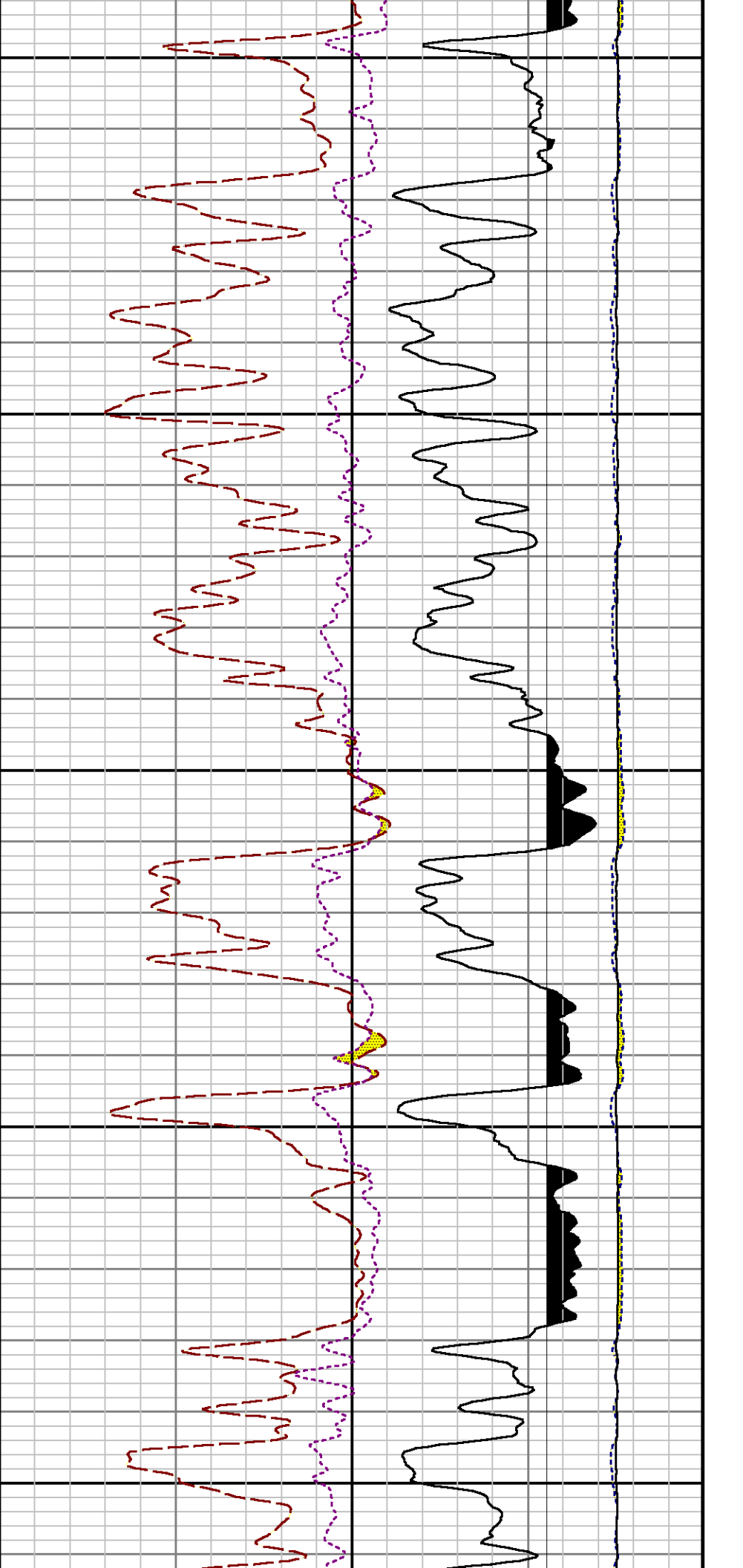
Mode : PlotMgr 5.4.504

Interval : 5890.00 - 9573.00 feet UP

Created : 8/21/2014 5:09:57 PM

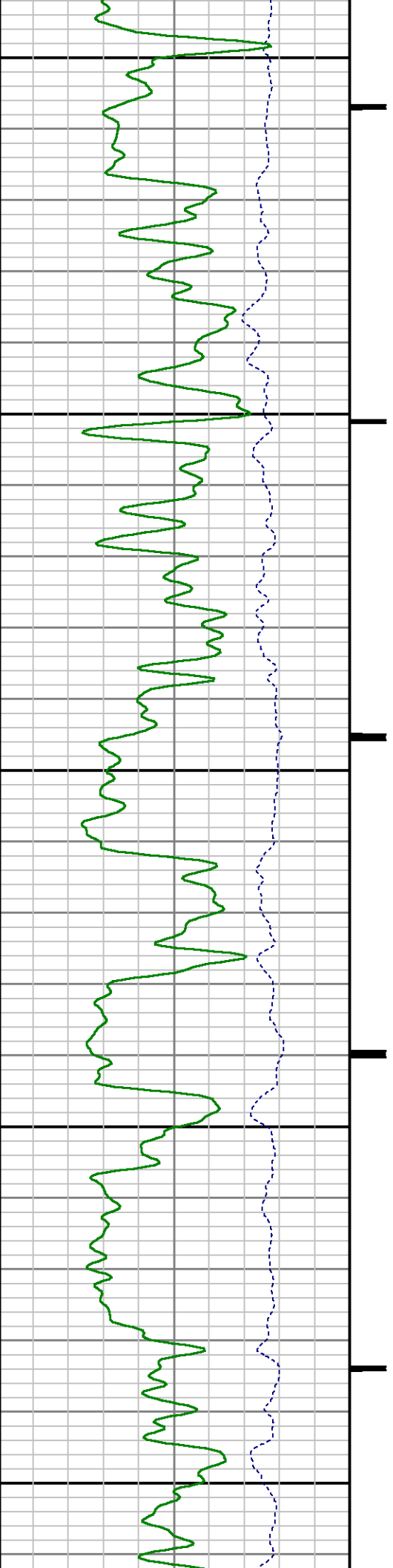


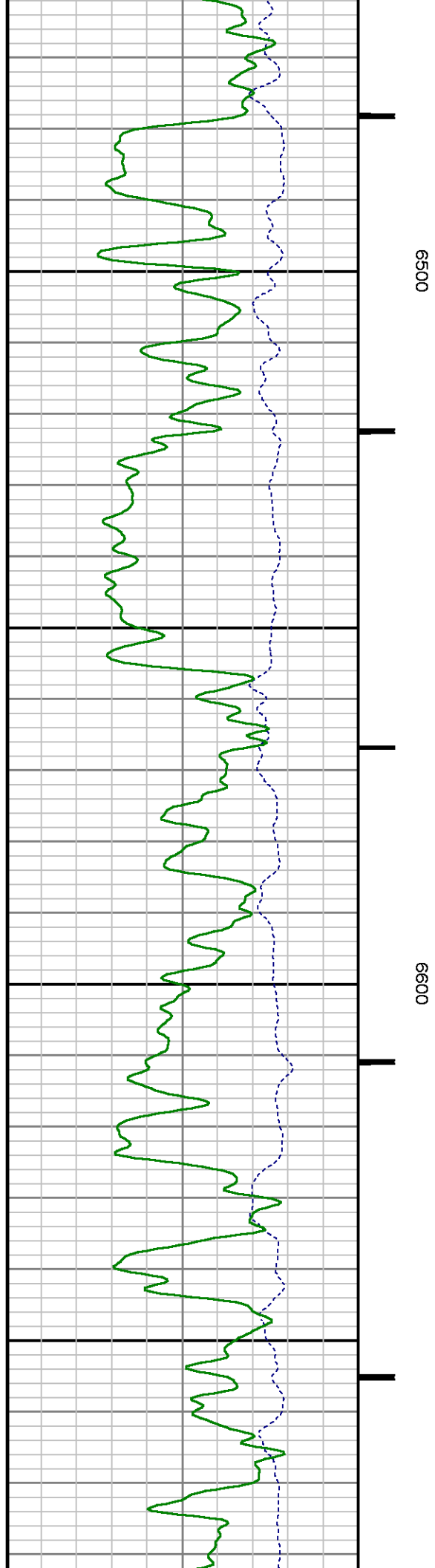
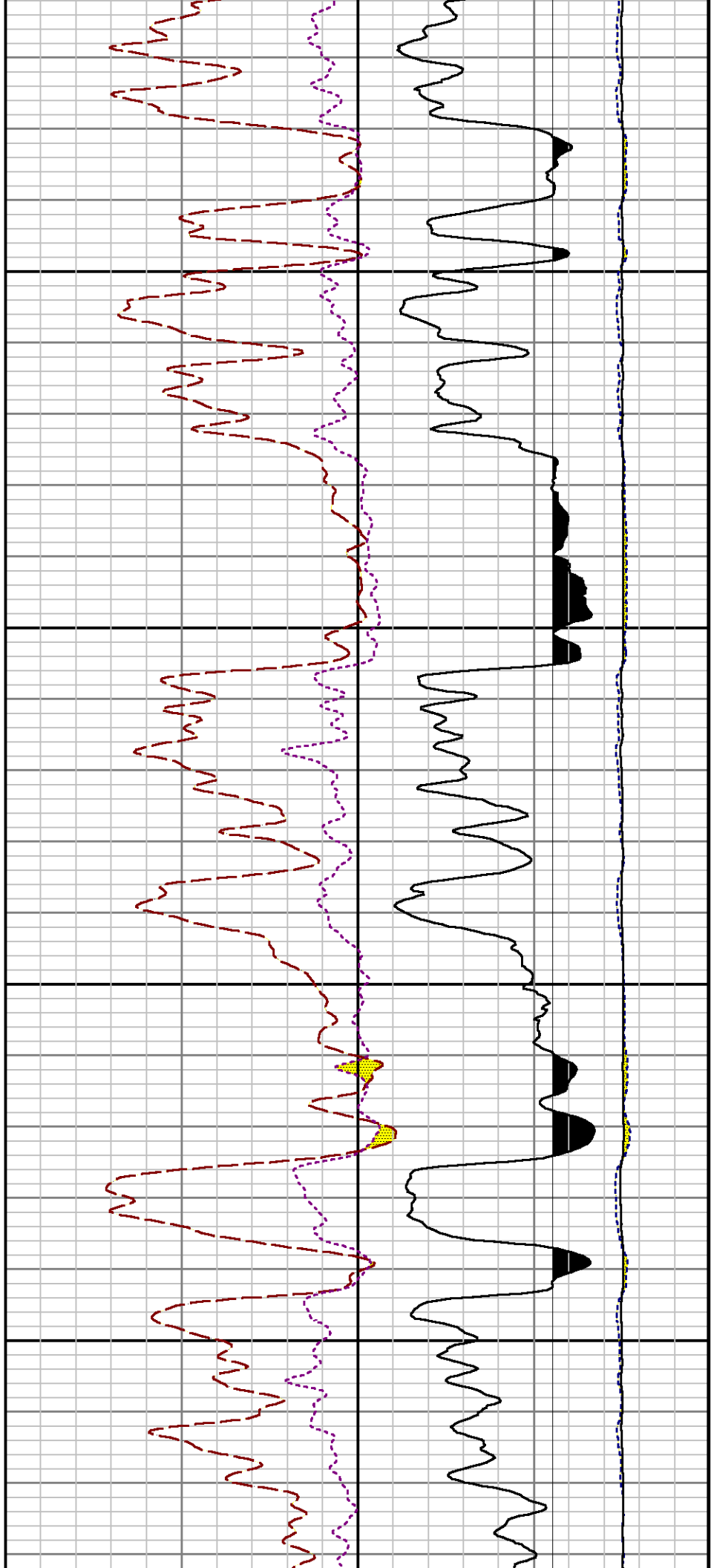


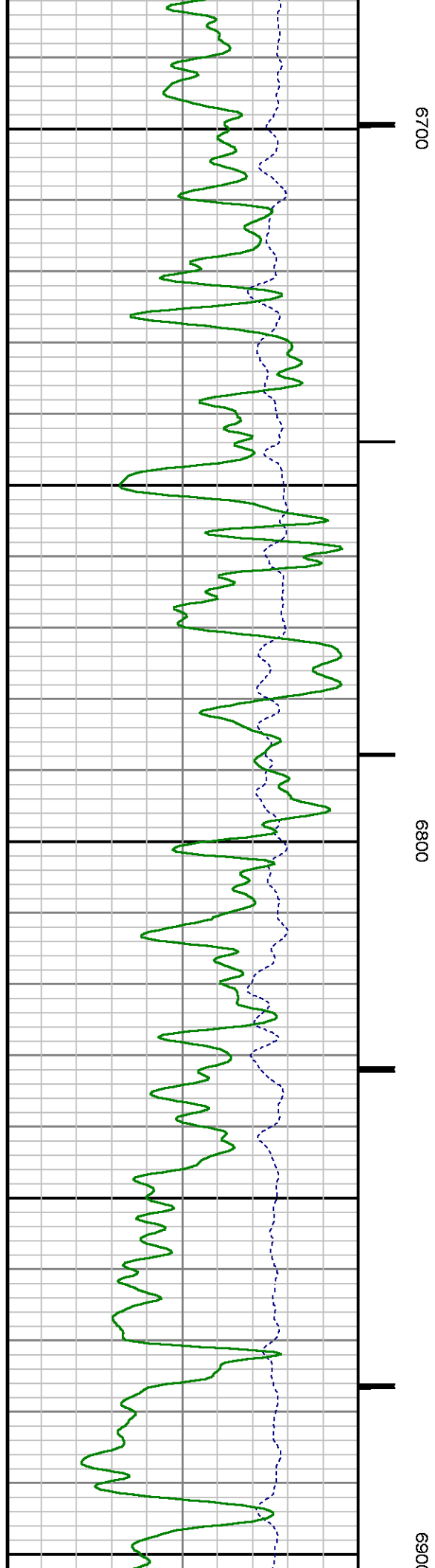
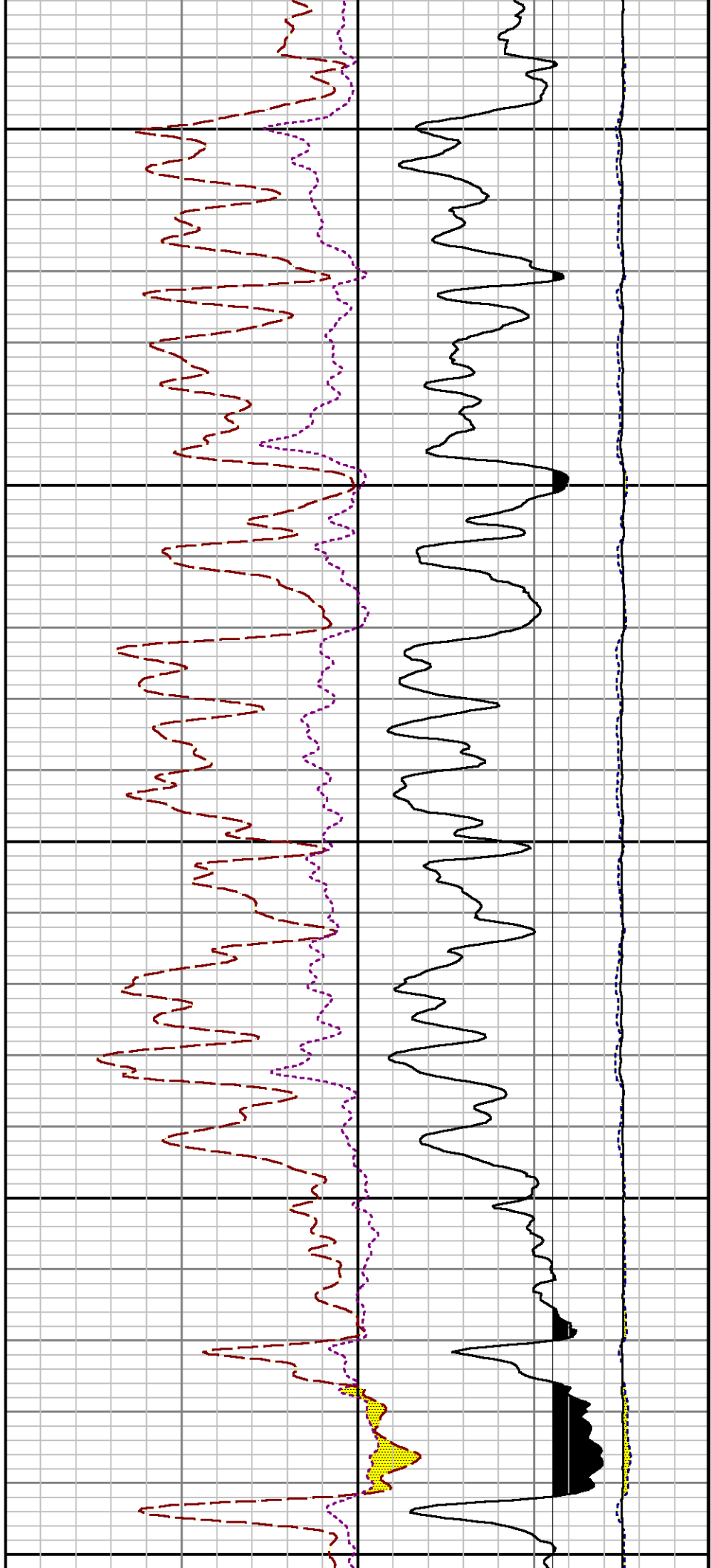


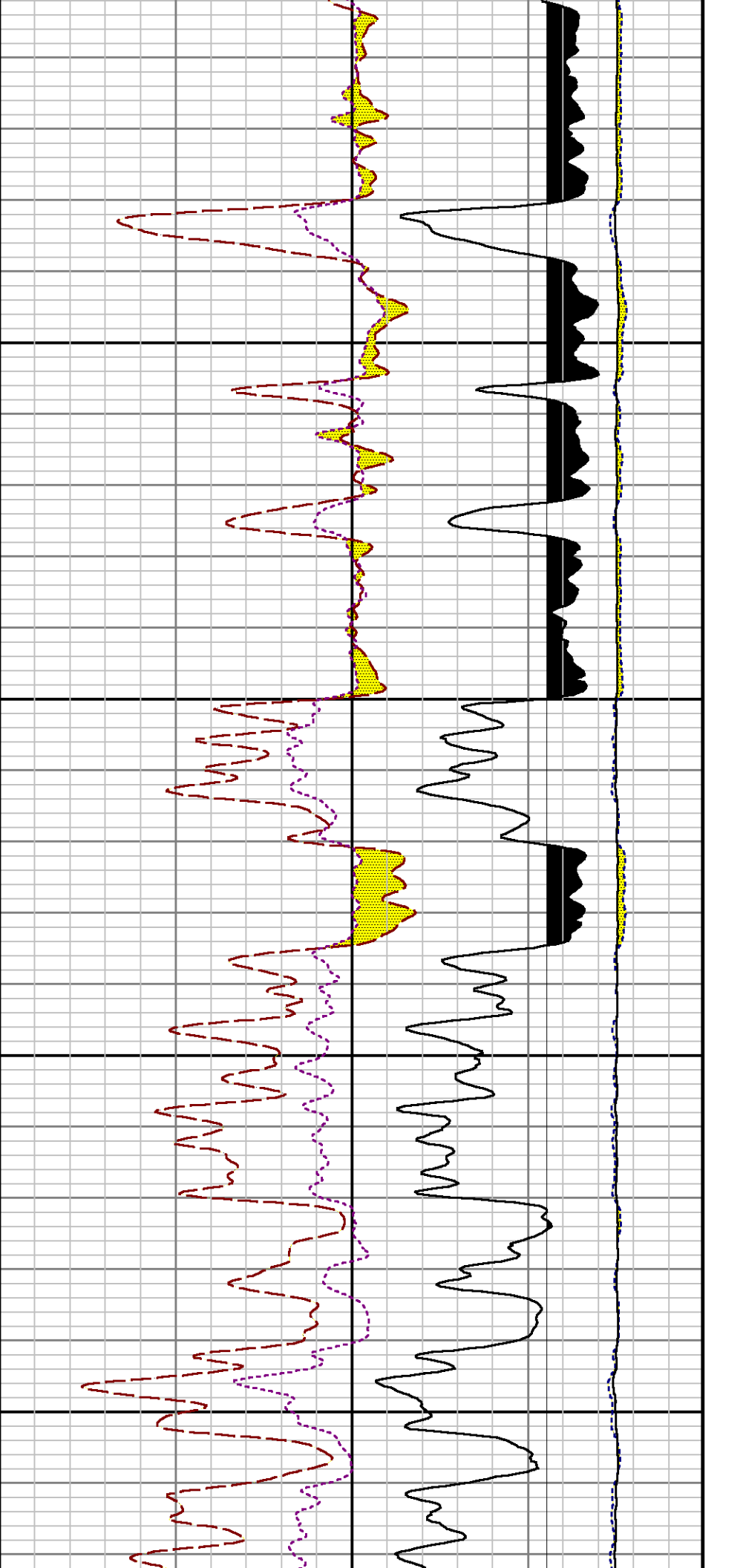
6300

6400



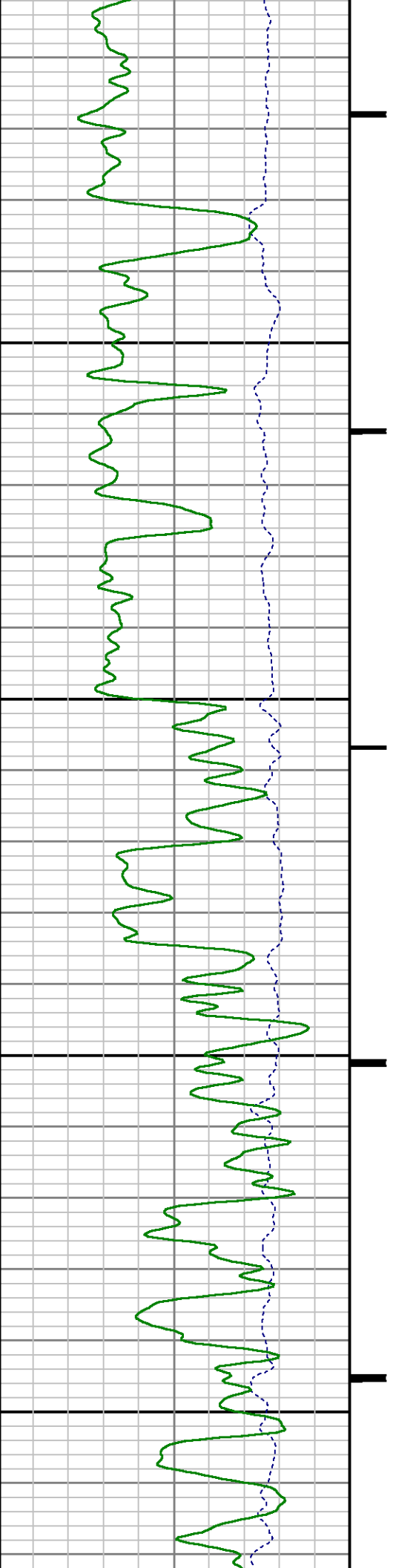


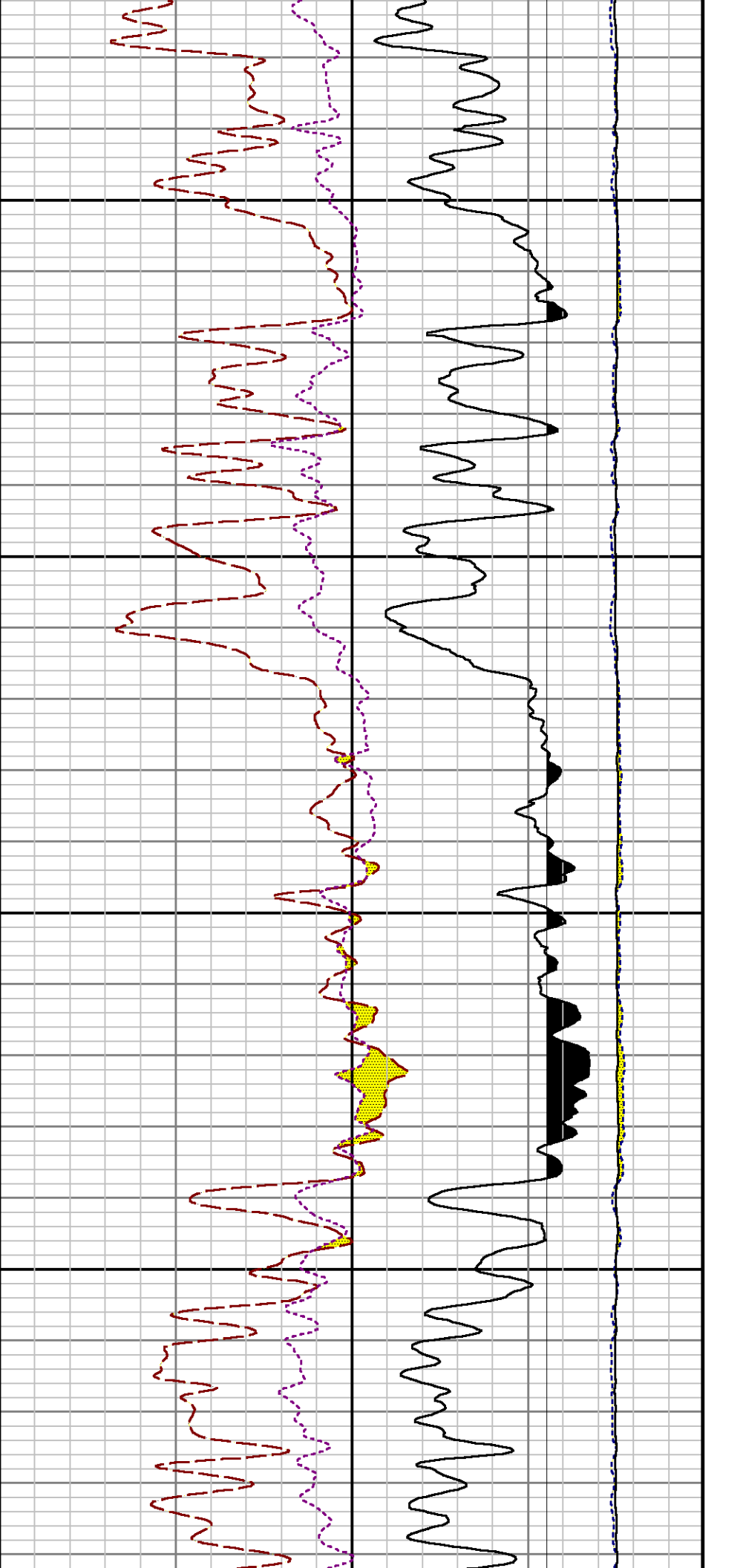




7000

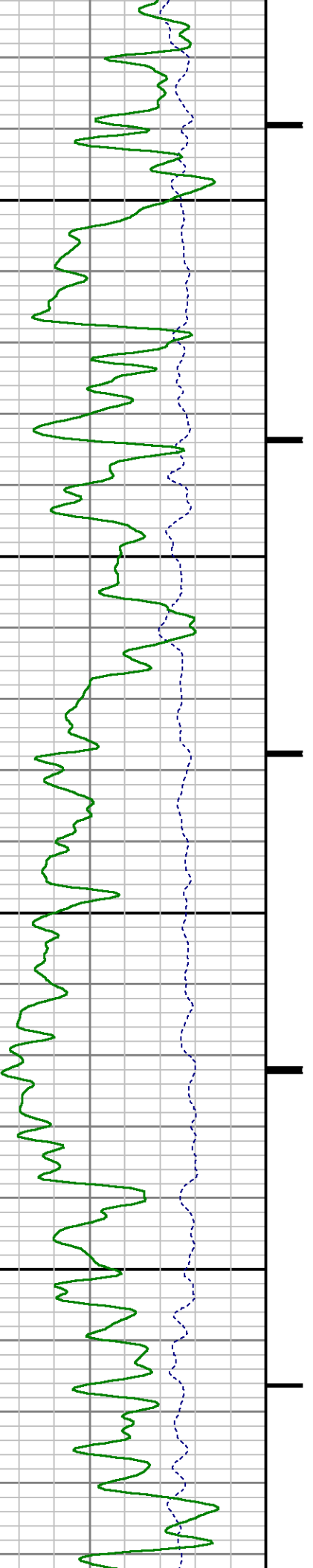
7100

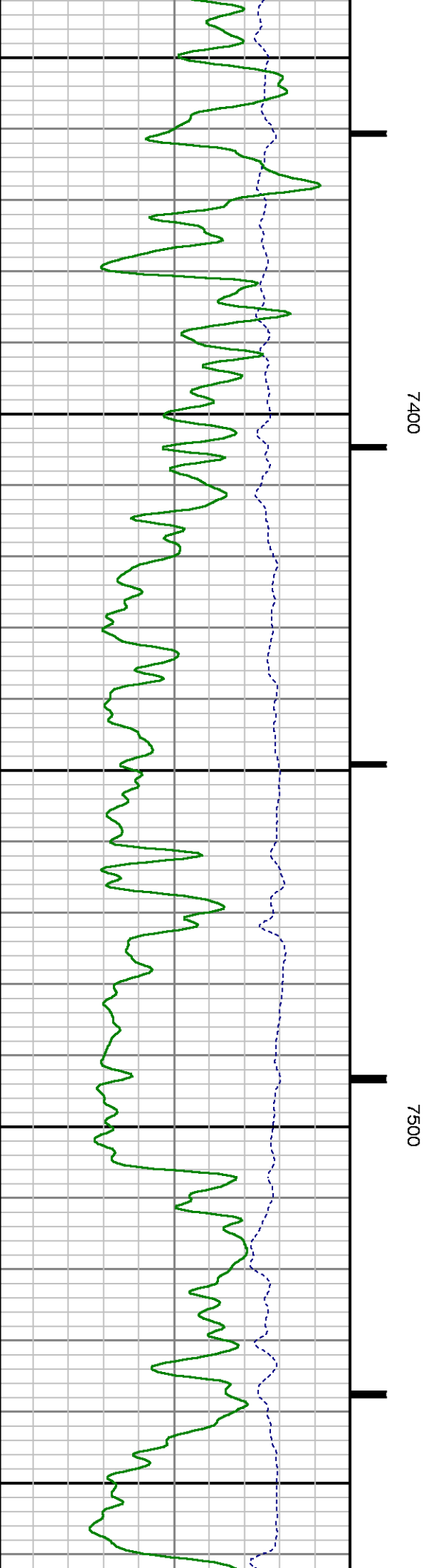
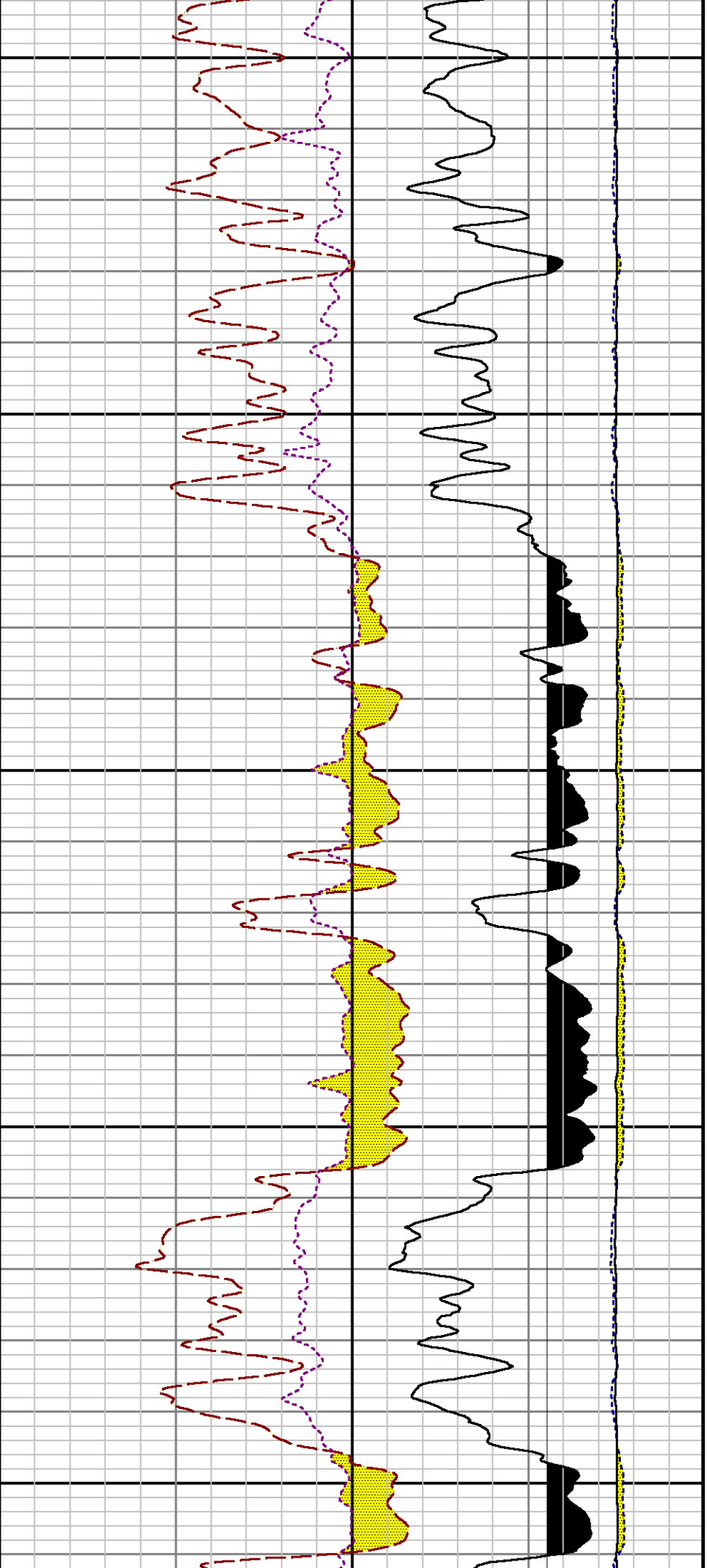


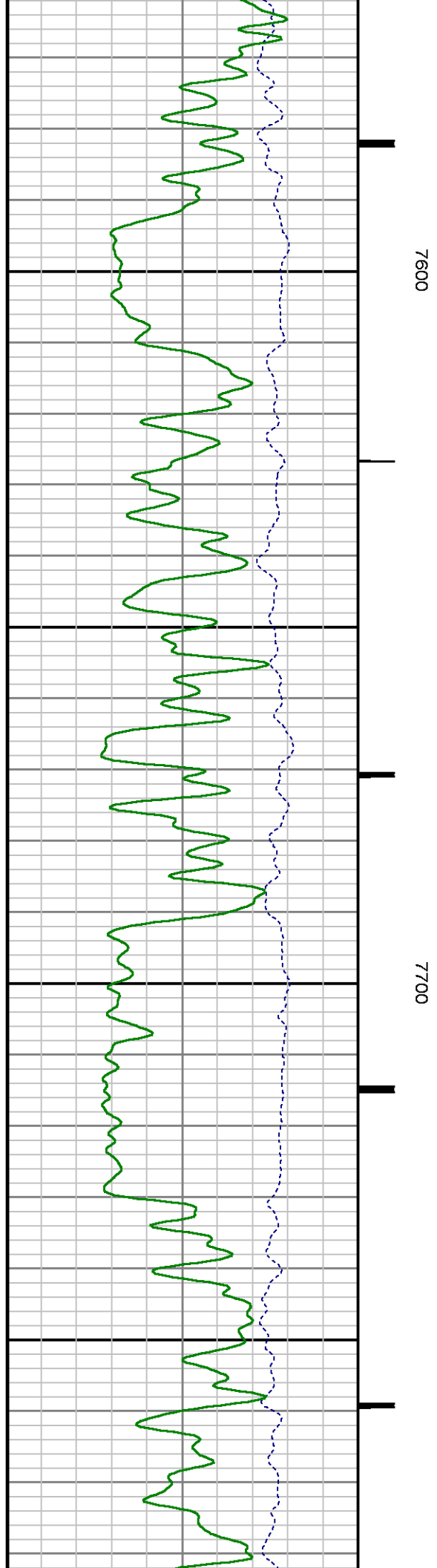
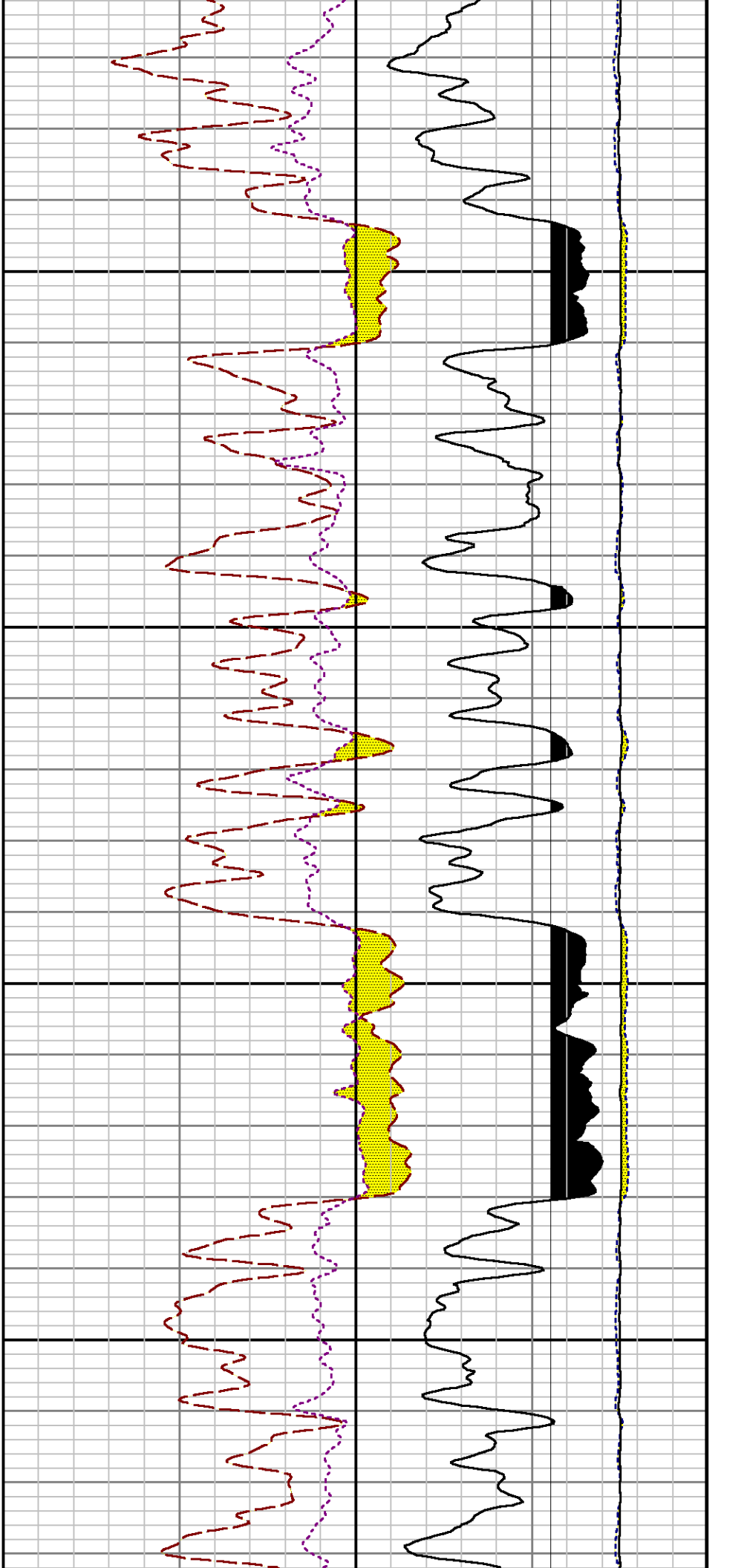


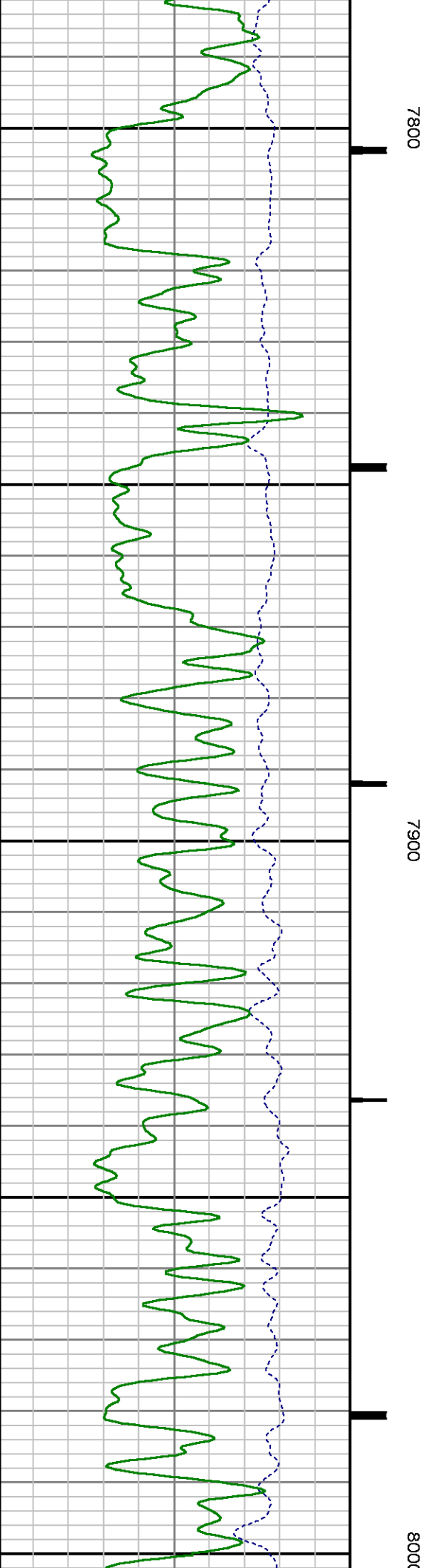
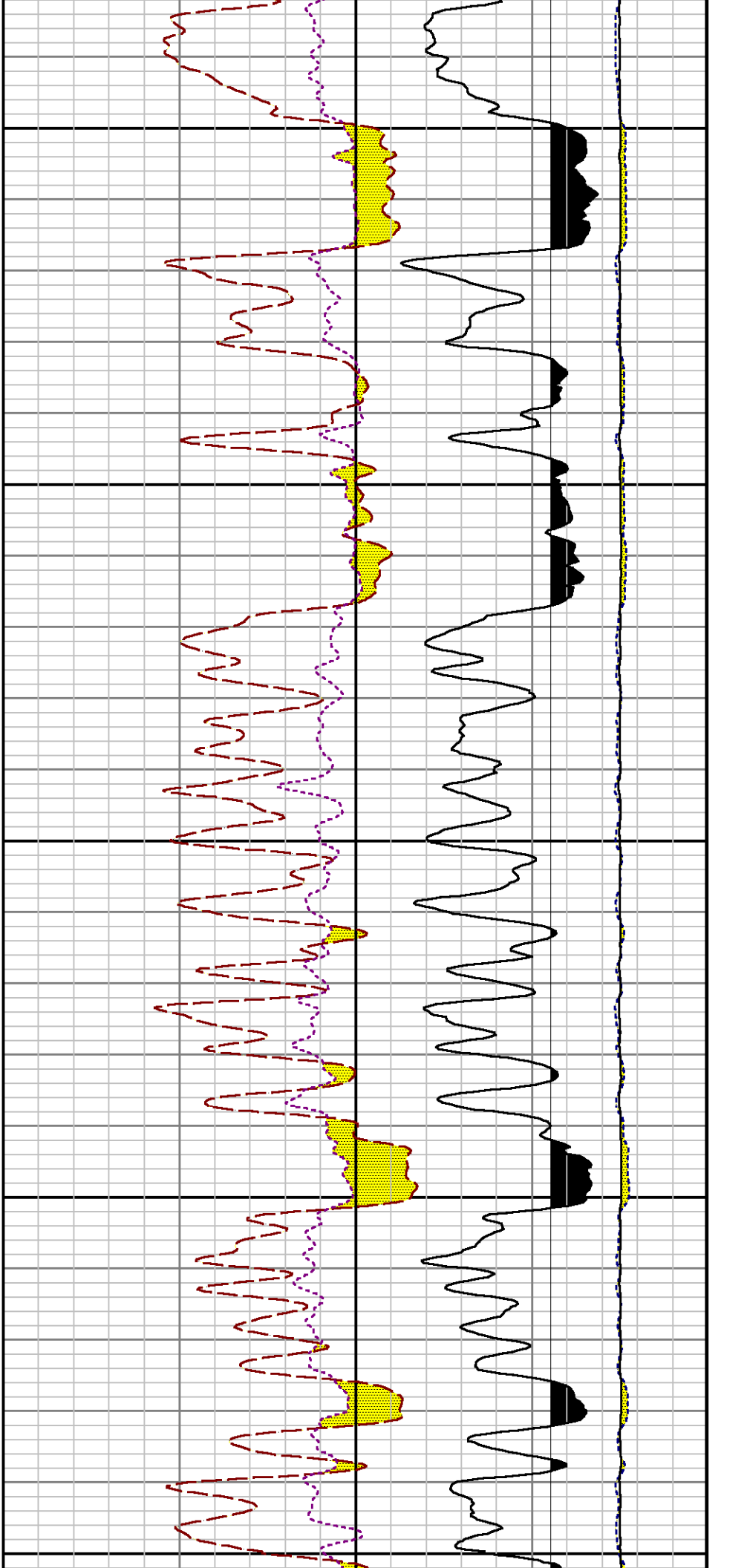
7200

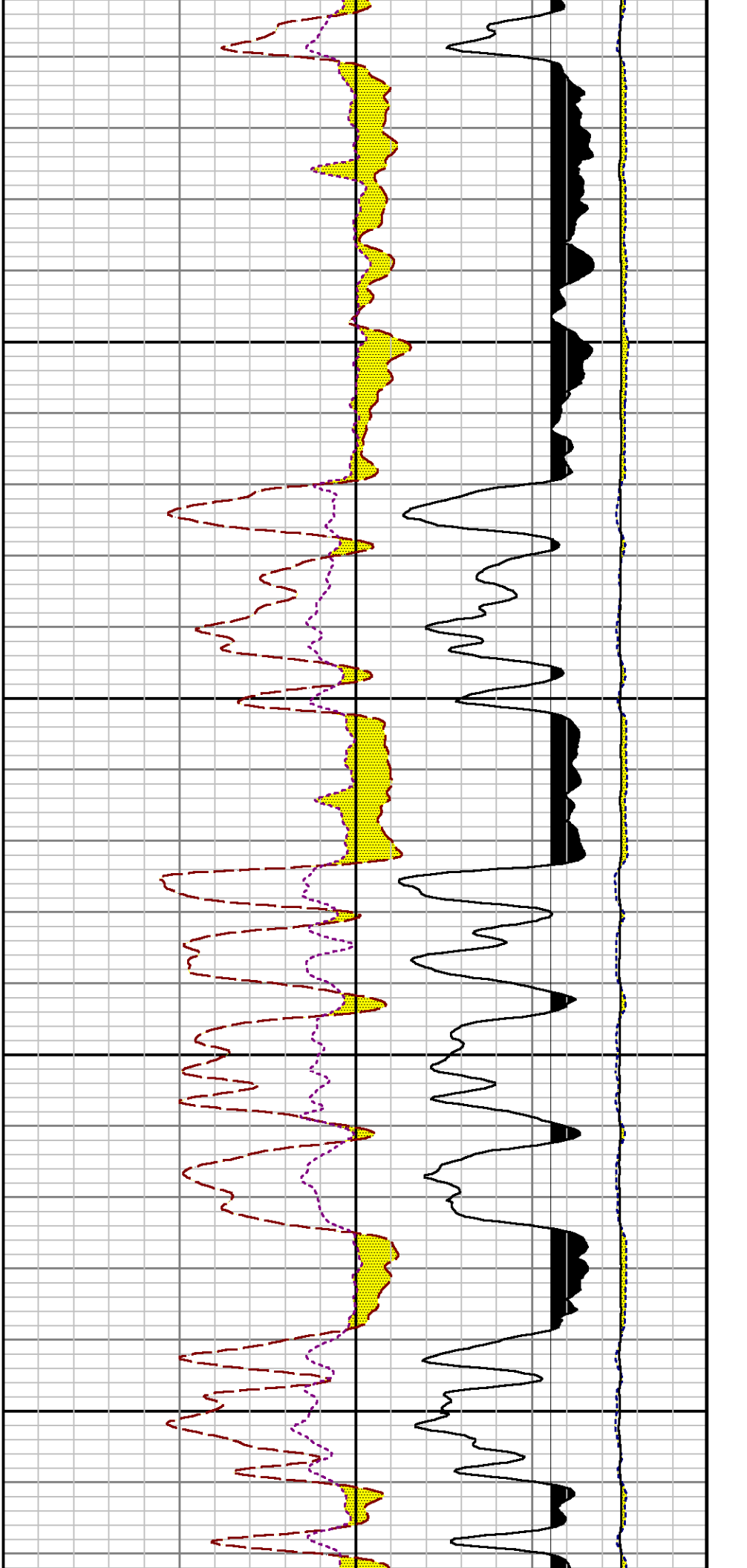
7300





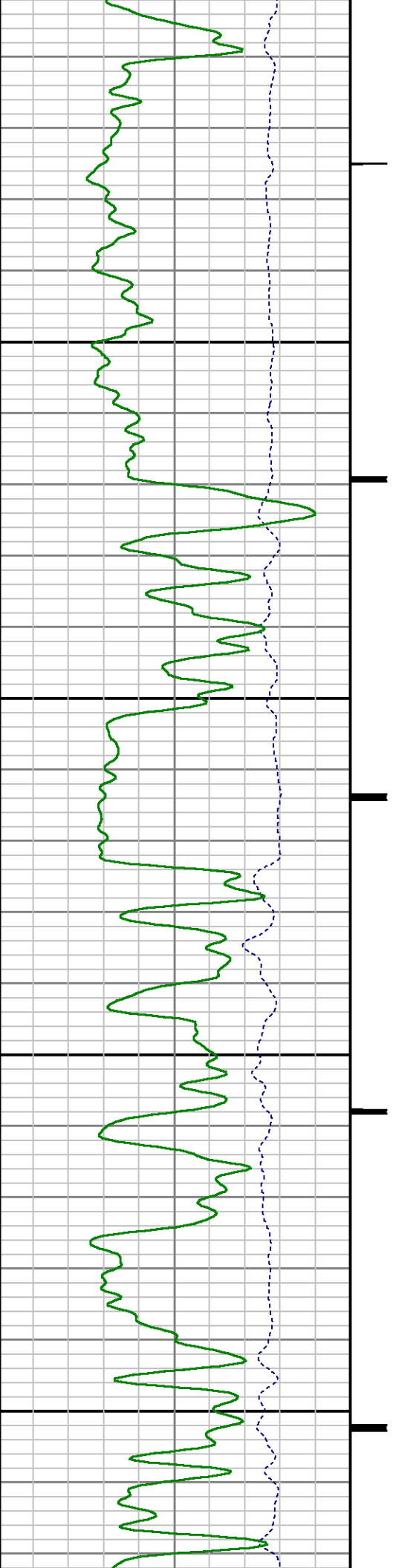


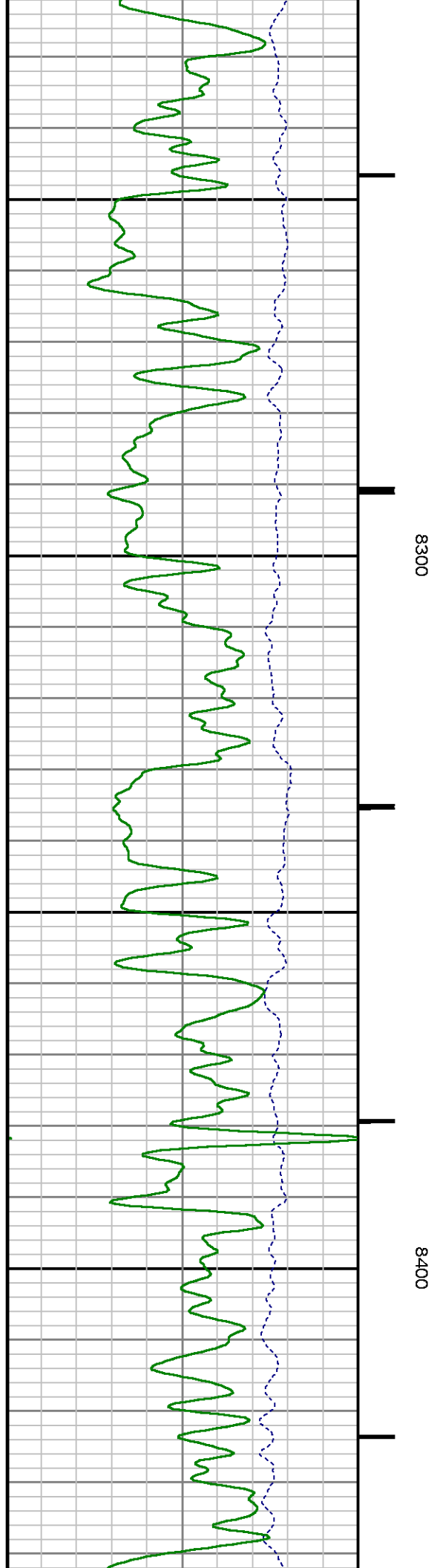
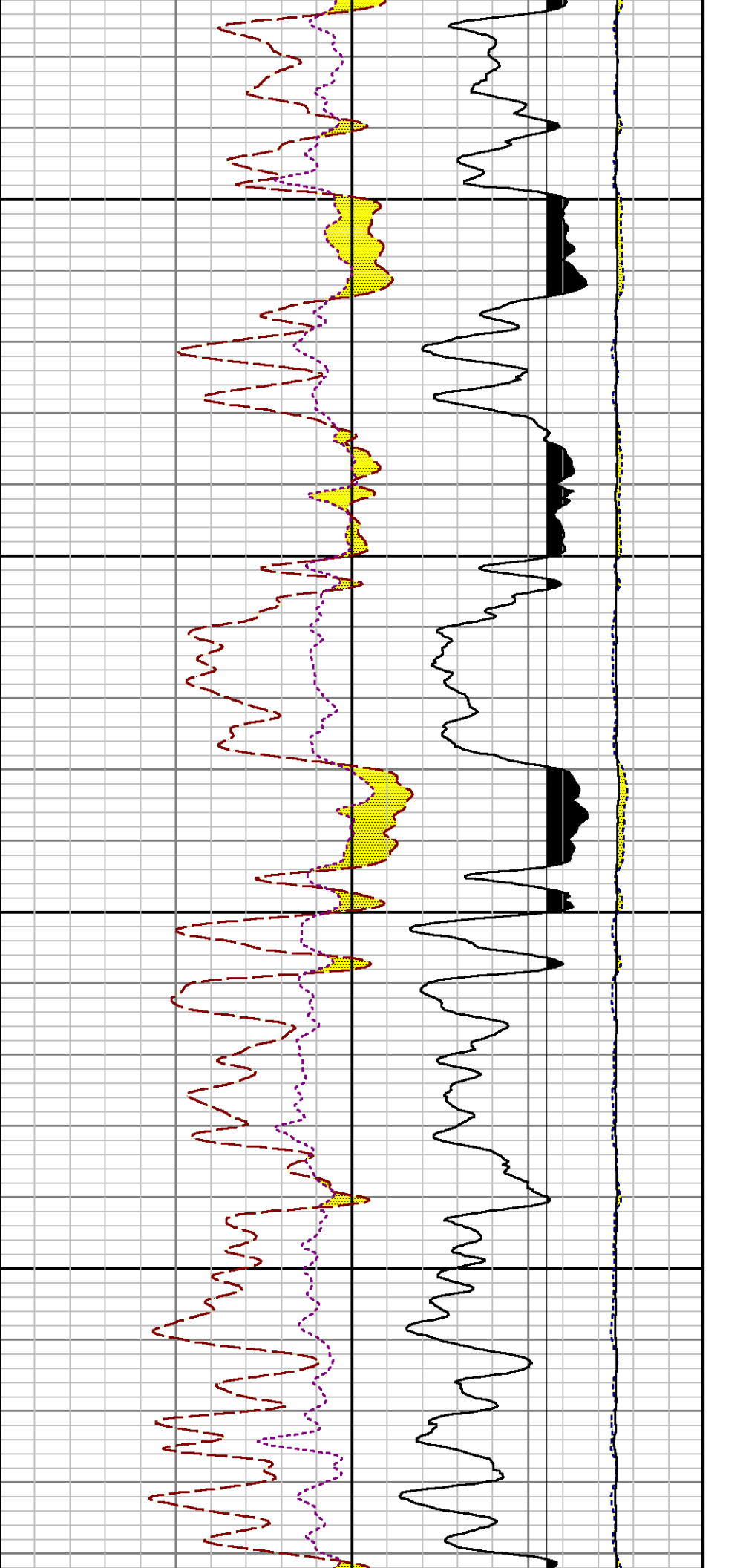


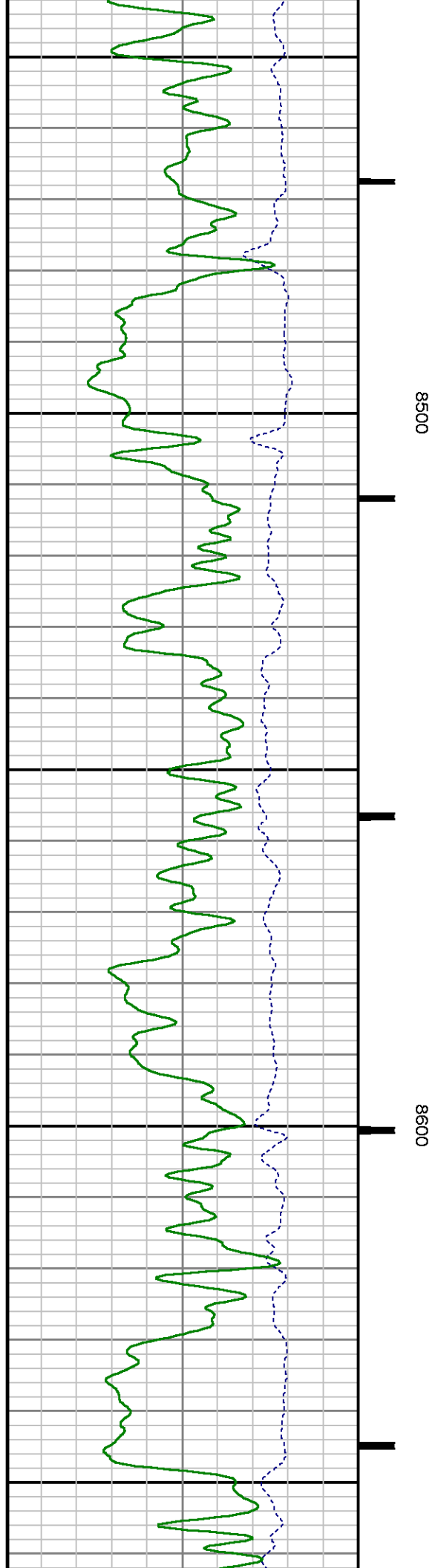
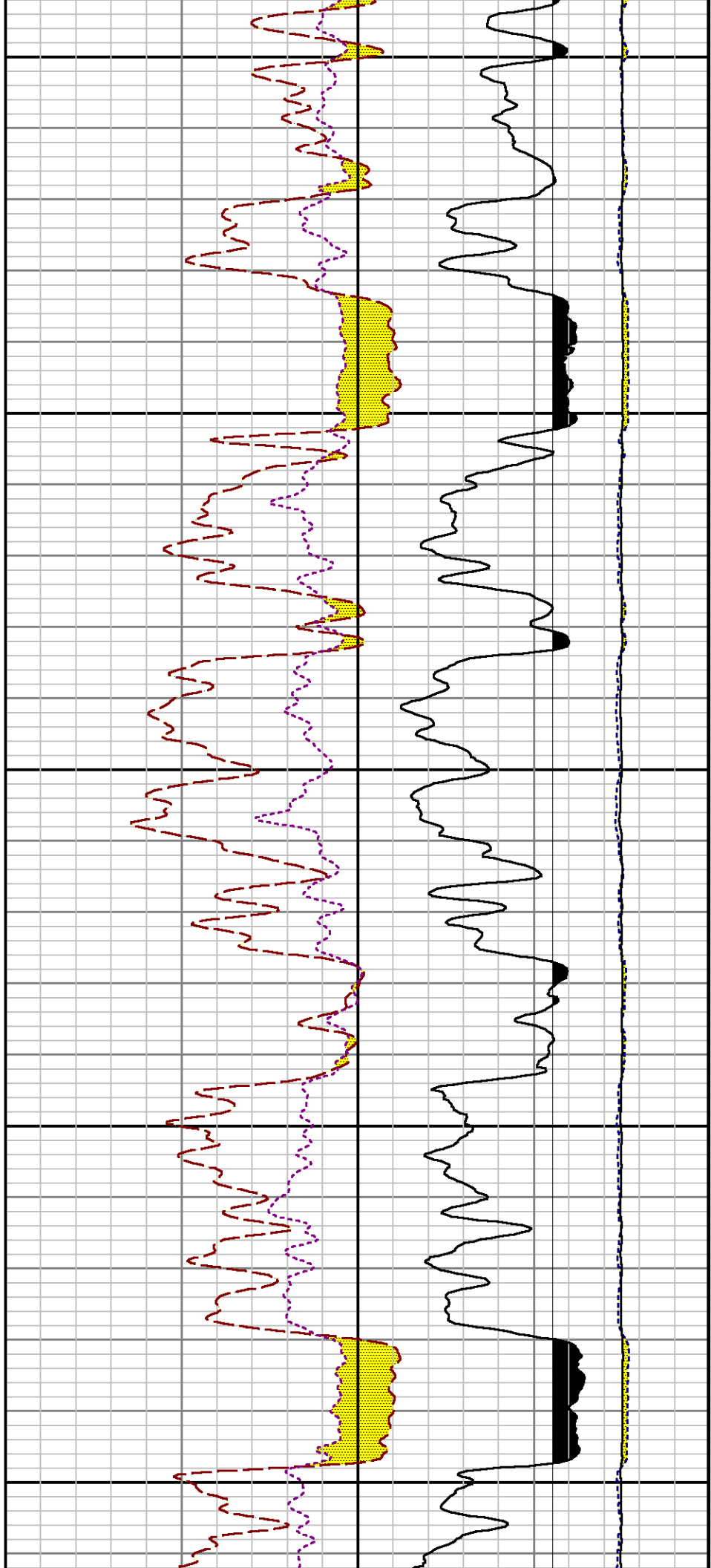


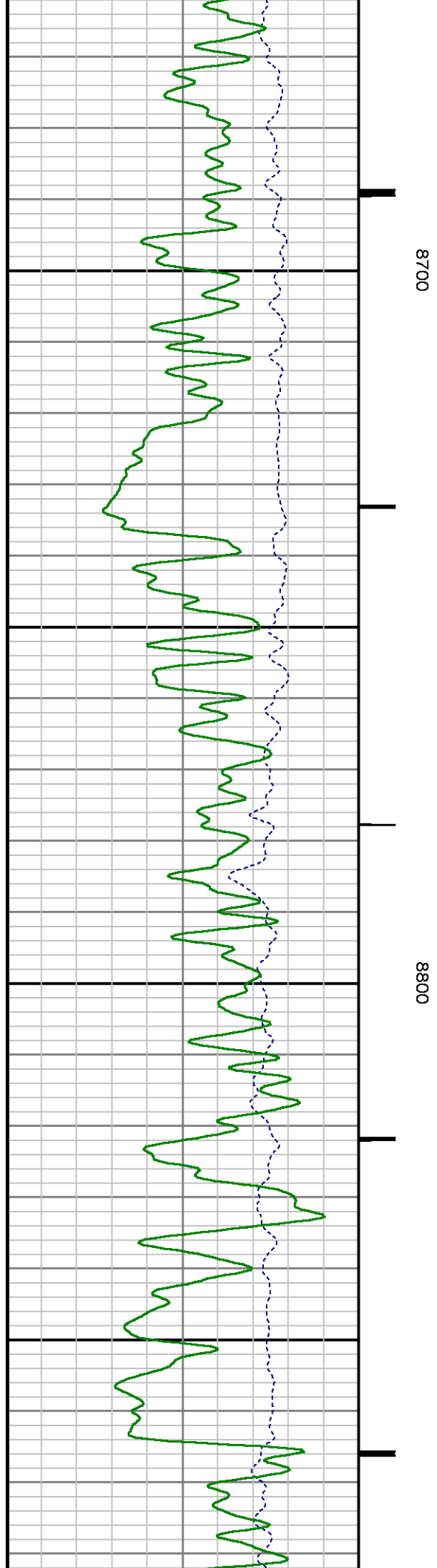
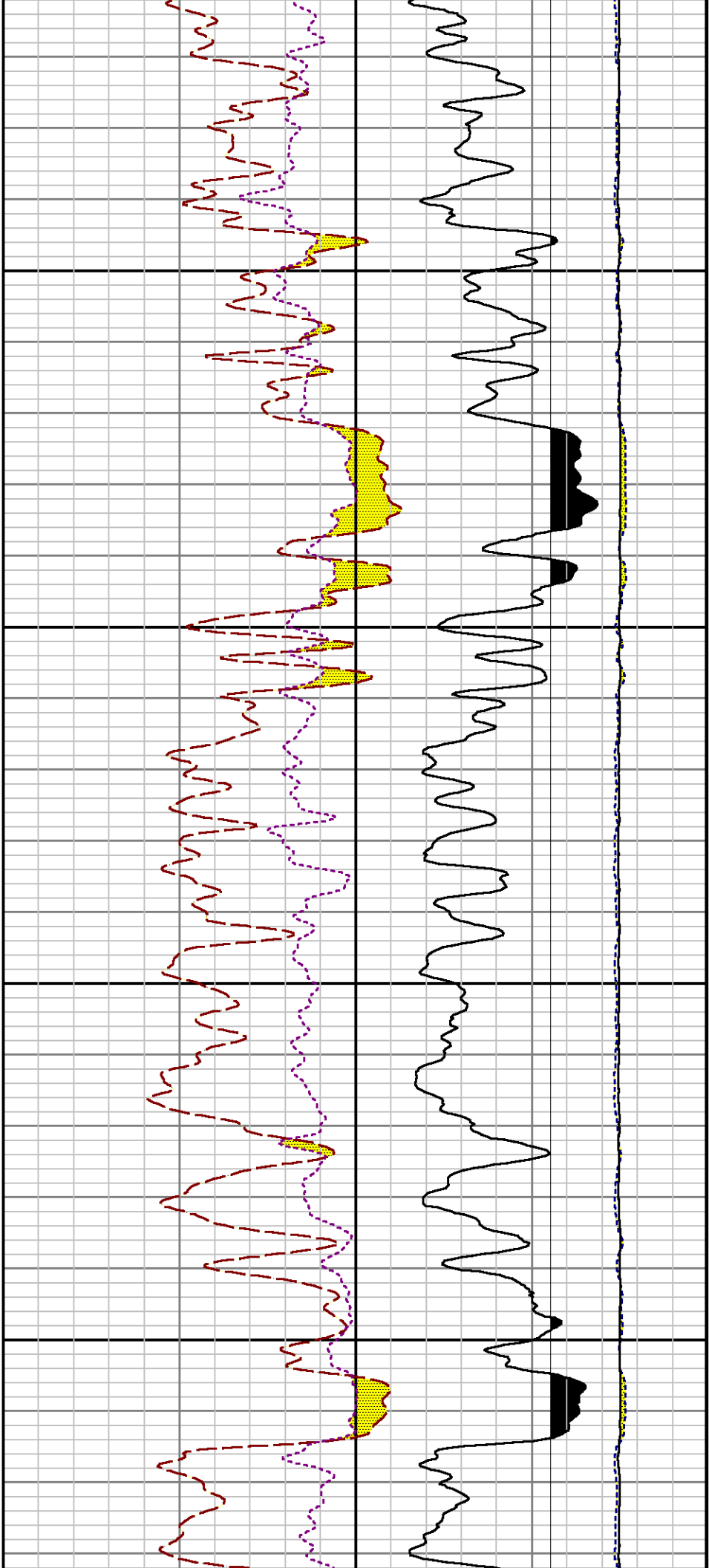
8100

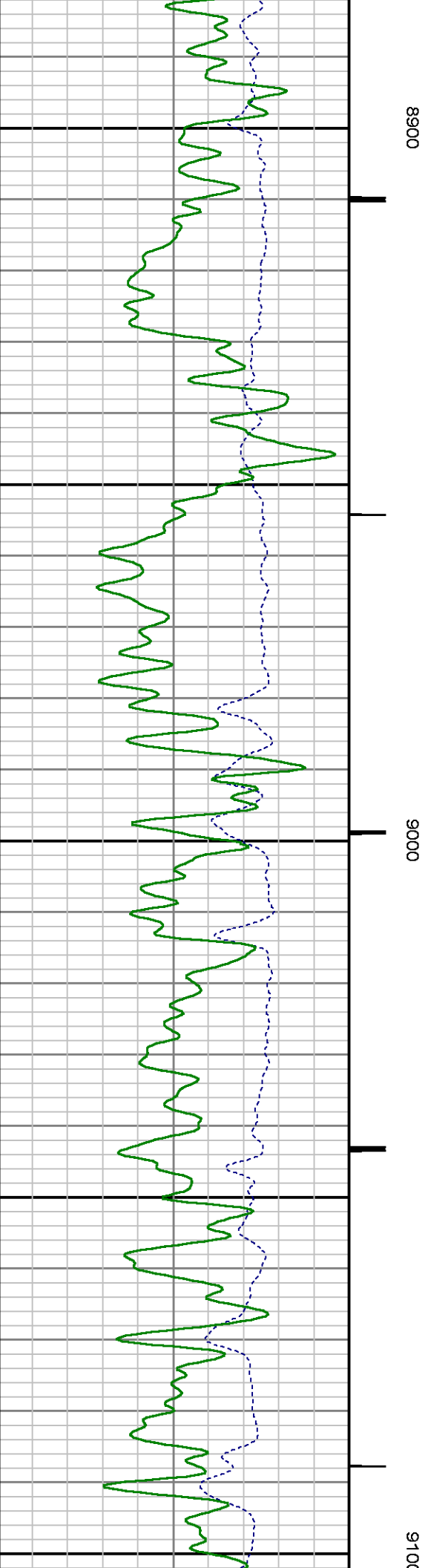
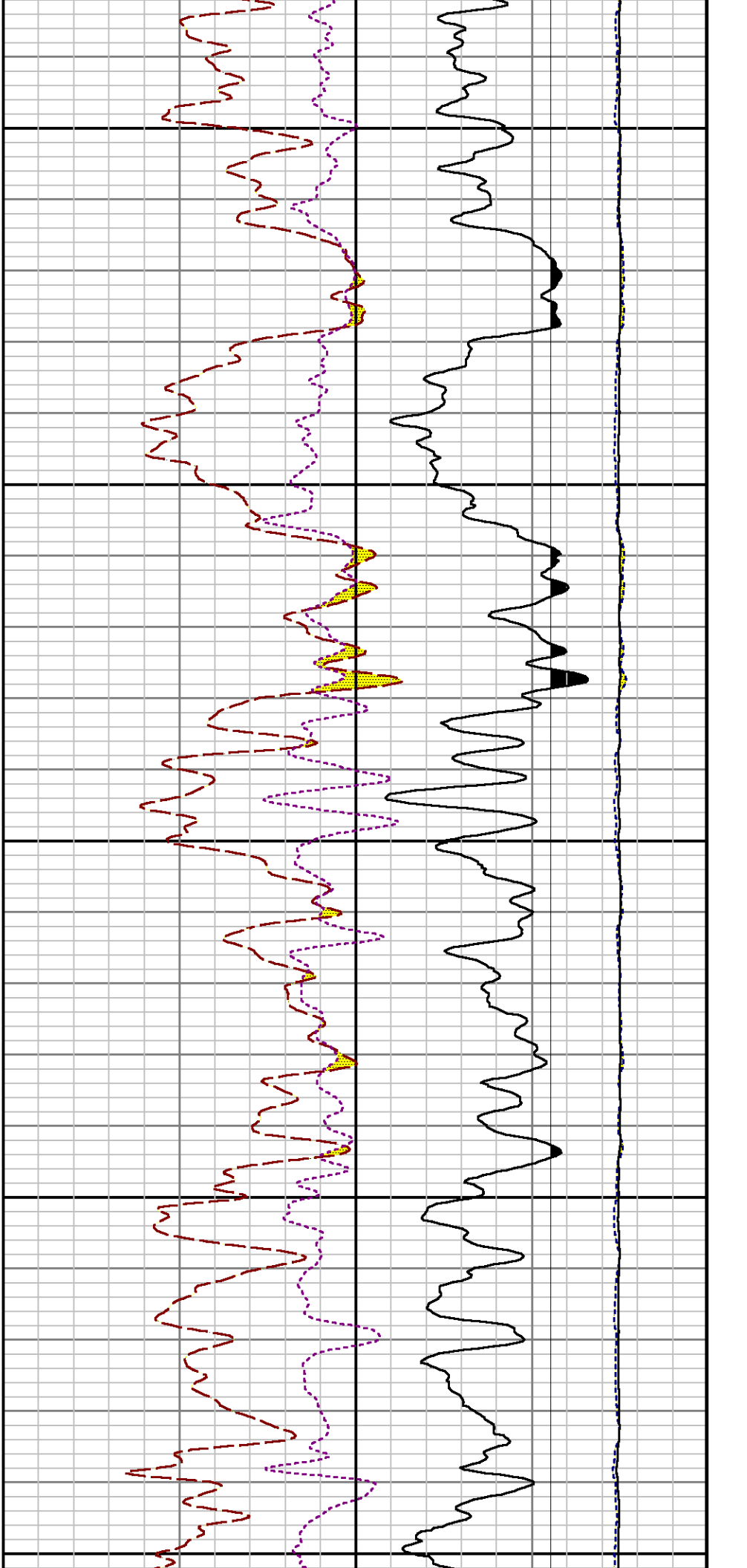
8200

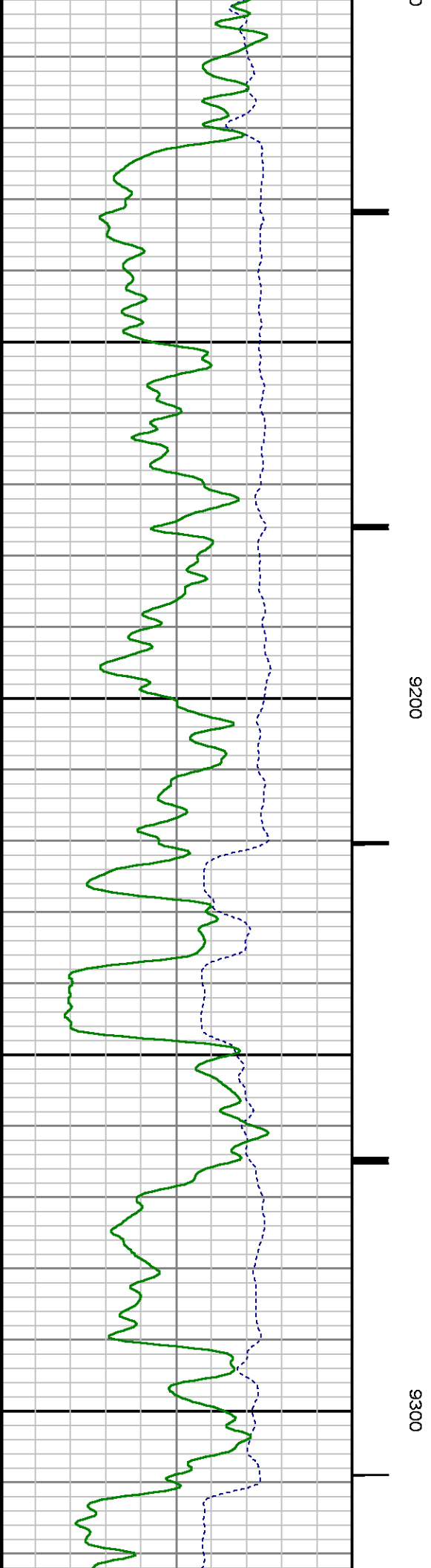
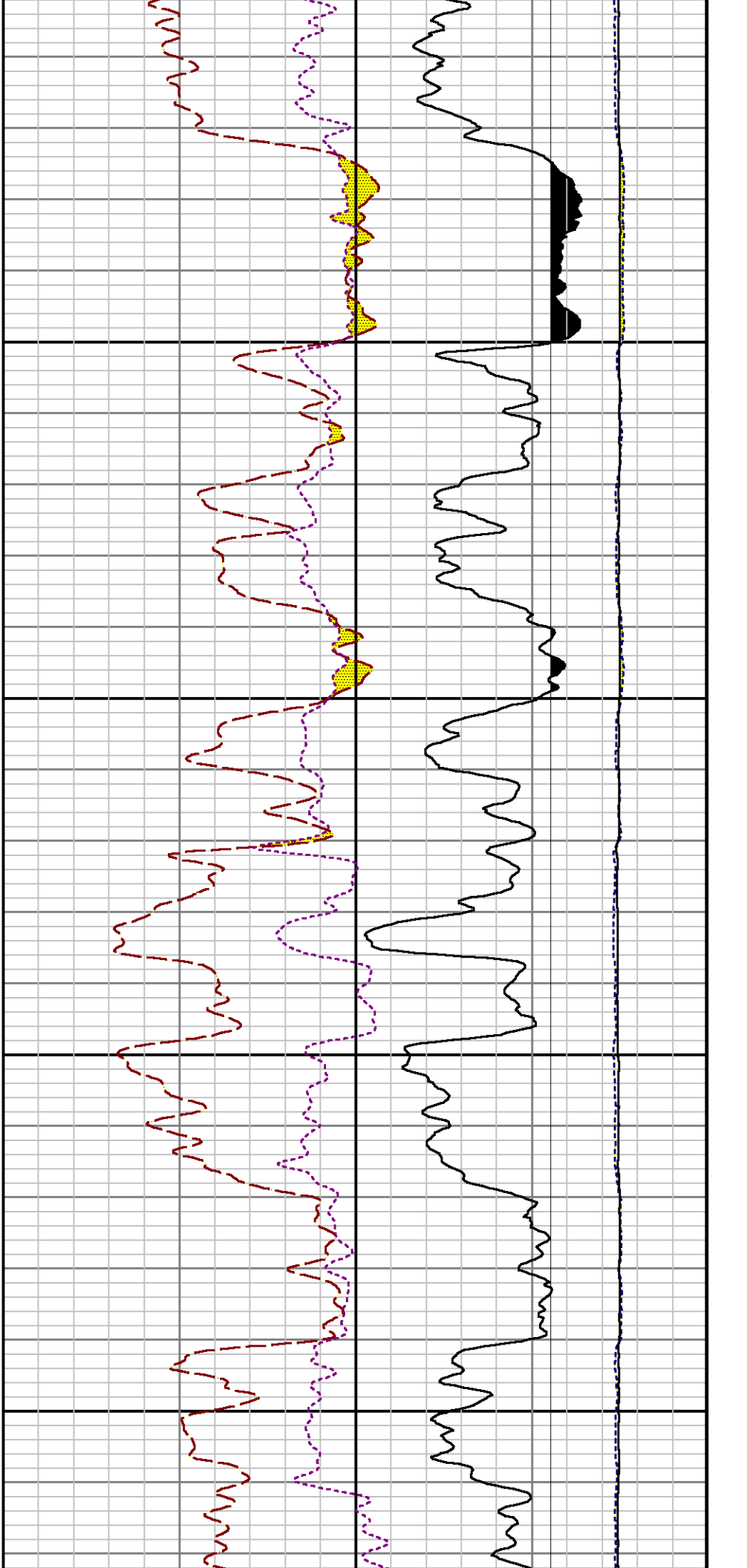


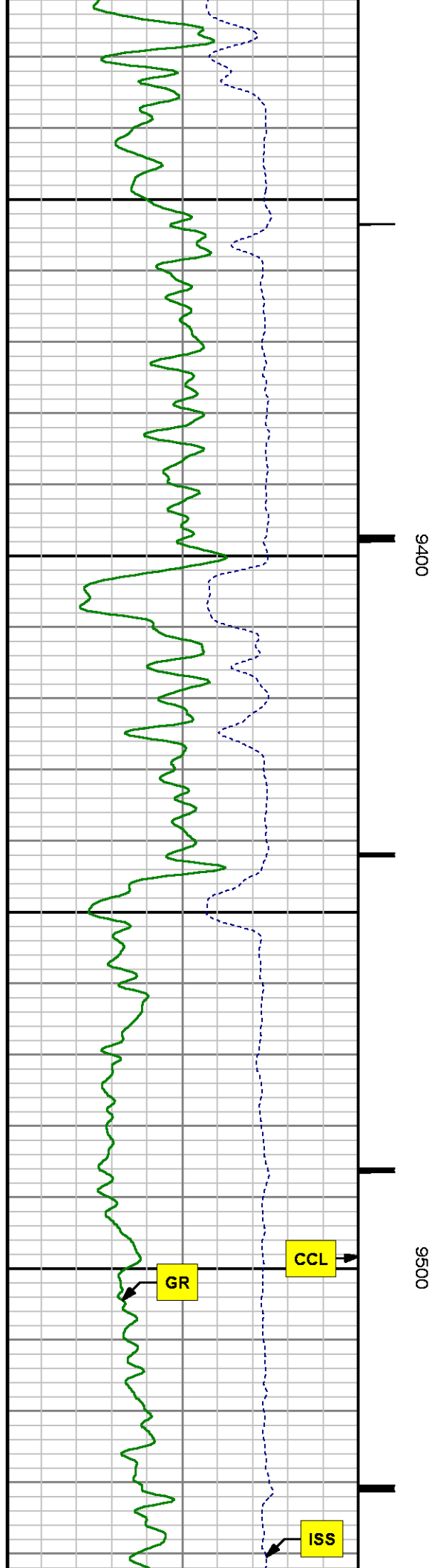
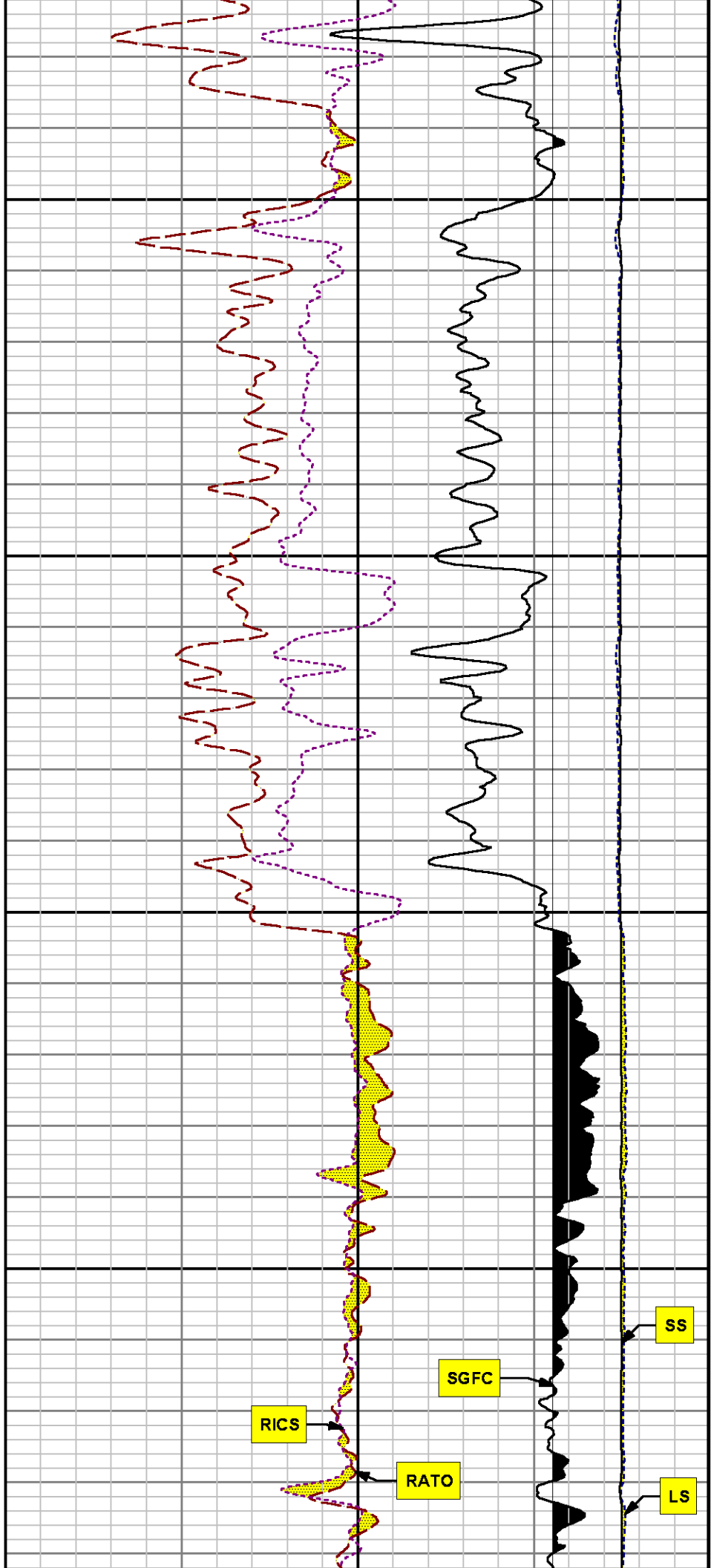


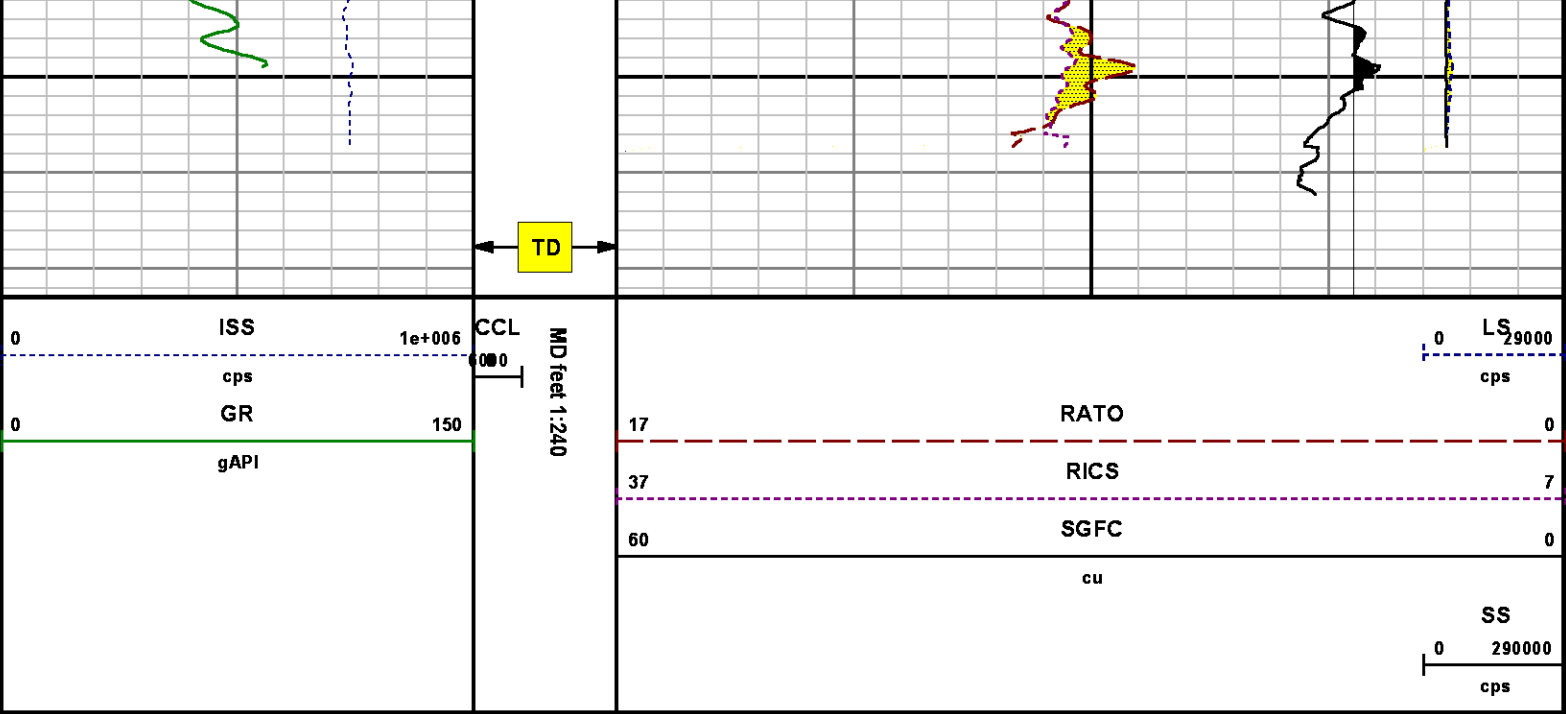












*REPEAT SECTION
PNC 3-D MODE*

SPL PROCESSING

MEASUREMENT TYPE	PARAMETER	VALUE	UNITS	TOP	BOTTOM
PNC Porosity	Borehole	Cased		8690.415	9025.415
PNC Porosity	Borehole Size	8.750	inch	8690.415	9025.415
PNC Porosity	Casing Size	4.500	inch	8690.415	9025.415
PNC Porosity	Gas Filled	Non Gas Filled		8690.415	9025.415
PNC Porosity	Matrix	Sandstone		8690.415	9025.415
TPS Pressure	Temperature Corr. Source	Fixed (72.00)	degF	8690.415	9025.415

DEPTH OFFSETS
(for Acquired Curves)

SERIES	DEPTH OFFSET	ACQUIRED CURVES
8248ED	-26.519	FLTM
8248ED	-26.519	CC1 - QUM

8248ED	-24.519	CCL	CHV				
2812LA	-21.969	GR					
8281XA	-12.702	HVC3Q0	SEQ3	AMA3	AML3	BKX	CXS
		CPT3Q0	CPT3Q2	CPT3Q3	CPT3Q4	ET3	IXS
		MCS3	MCS3Q0	QCAL3	RGN3	RICX	SDA3
		SDL3	SGA3	SGL3	STA3	XS	ASPEC3
		AMB3	AMF3	CHF3	IXSC	IXSN	RATO23
		RICXC	RIN13C	RIN23	RIN23C	SD3D	SG3D
		SGB3	SGF3	WDTH3	CXSR	IXSR	XSR
		RICXR					
8281XA	-12.291	HVC2Q0	SEQ2	AMA2	AMB2	AMF2	AML2
		BKL	CHF2	CLS	CPT2Q0	CPT2Q2	CPT2Q3
		CPT2Q4	ET2	ILS	LS	MCS2	MCS2Q0
		QCAL2	RGN2	RICL	RONE23	RTWO23	SDA2
		SDL2	SGA2	SGB2	SGF2	SGK2	SGL2
		STA2	ASPEC2	ILSC	ILSN	WDTH2	RICLC
		CLSR	ILSR	LSR	RICLR		
8281XA	-12.041	CPRS	HVC1Q0	MV	SEQ	SEQ1	AMA1
		AMB1	AME1	AMF1	AML1	BKS	CHF1
		CSS	CORB	CORF	CPT1Q0	CPT1Q2	CPT1Q2A
		CPT1Q2B	CPT1Q2C	CPT1Q3	CPT1Q4	CPT1Q5	ET1
		G1	G2	GE1S	GE2S	ISS	MCS1
		MCS1Q0	QA1	QCAL1	QM1	RATO	RATO13
		RBOR	RGN1	RICS	RIN	RONE	RPOR
		RTWO	RIN13	RONE13	RTWO13	SALB	SC1
		SDA1	SDL1	SGA1	SGB1	SGBC	SGE1
		SGF1	SGFC	SGK1	SGL1	SS	SS2
		STA1	PD1S	PD2S	PD3S	MD1S	MD2S
		MD3S	DG1S	DG2S	DG3S	PD1M	PD2M
		PD3M	MD1M	MD2M	MD3M	DG1M	DG2M
		DG3M	MVS	MA	MVM	FILV	IAM
		TA	PVM	PVS	IAS	SSTAT	QPD1
		QPD2	QPD3	QMD1	QMD2	QMD3	QDG1
		QDG2	QDG3	QMA	QTA	QFILV	QMV
		QPV	QIA	DERR	DCNT	QPK1	QSA1
		PKS1	ASPEC1	H0C	FE2XC	ISSC	RINC
		ISSN	RDEN	WDTH1	RICSC	CSSR	G1R
		G2R	ISSR	SSR	SS2R	RATOR	RATO13R
		RBORR	RICSR	RINR	RIN13R	RONER	RPORR
		RTWOR					
8255XA	-0.792	PTFS	PTMS				
8255XA	-0.775	SPF1	SPFQ	TSCP	TSDP		
8255XA	0.000	DTEM	TEMP	TNF			
SYSTEM	0.000	TEN	TEN				

Created by : RPM9, v5.3.1.0

Plotted by : PlotMgr, v5.4.504

Company : WPX ENERGY

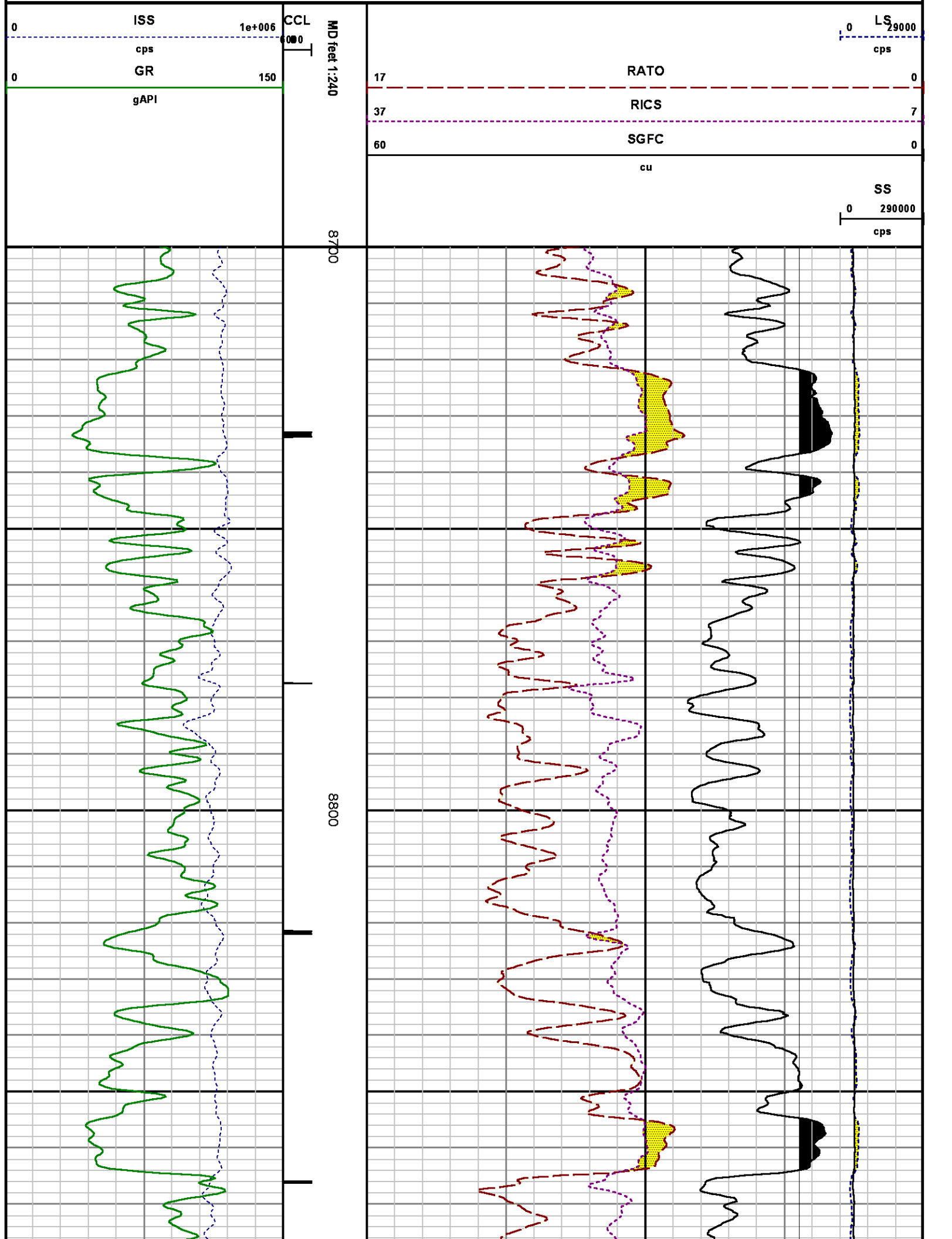
Well : AP 321-20-695

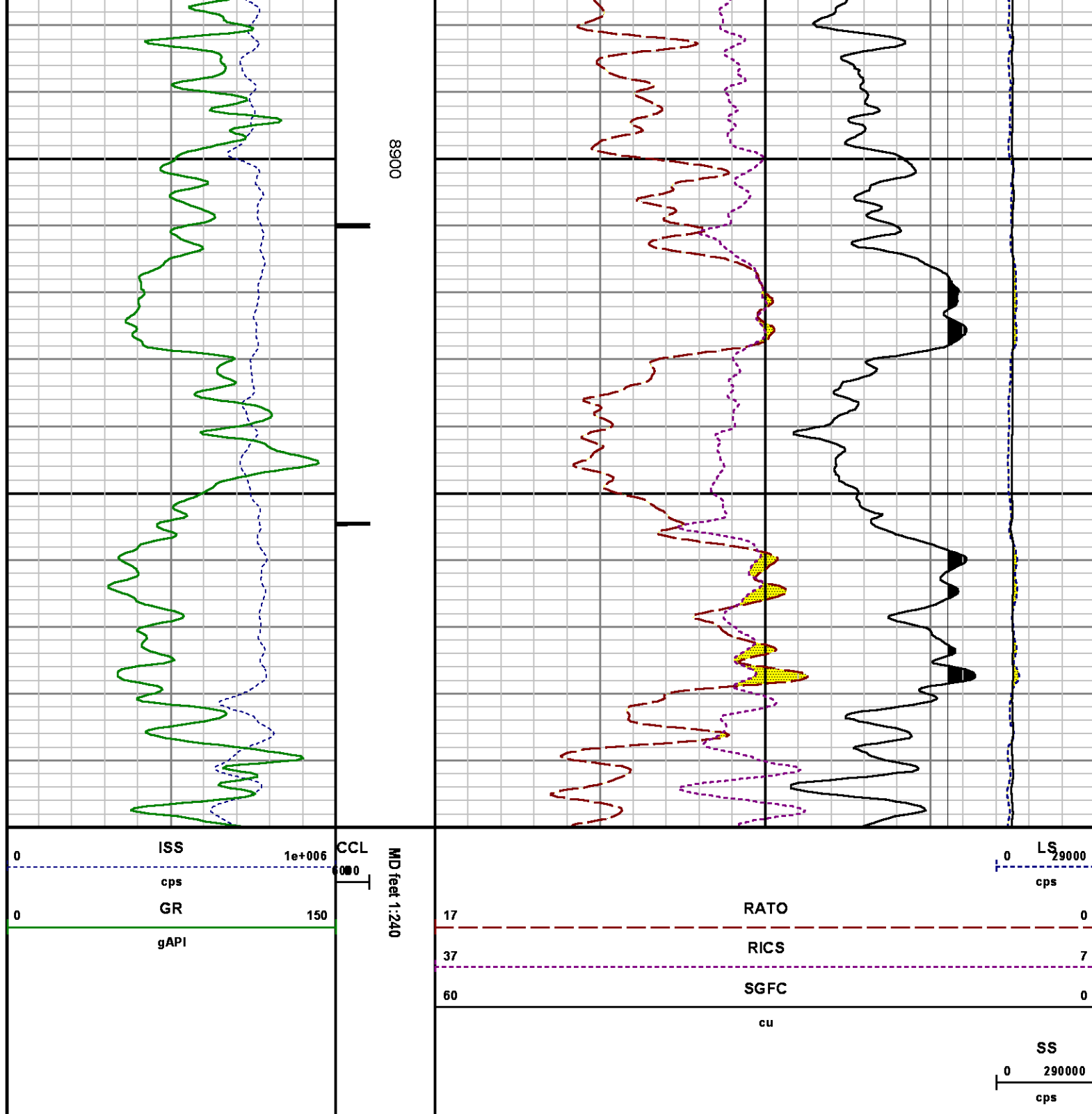
File Name : d:\welldata\wpx\ap 321-20-695\rpm321\repeat.xtf

Mode : PlotMgr 5.4.504

Interval : 8700.00 - 9000.00 feet UP

Created : 8/21/2014 12:51:53 PM





CALIBRATION SUMMARY

PNC

Calibration File: C:\case\calver\PNC\34531.cal

PNC 3D CALIBRATION SUMMARY

DATE/TIME PERFORMED: Wed Jul 30 12:25:24 2014 TOOL SERIES: 8281XA ASSET: 345 SEQ: 31

Calibrator

2437XB 112674

Source

8281AA 10148476

	ISS	Mtr VIts (V)	SS Gain	LS Gain	XLS Gain	EA Temp (degF)	Sync Delay (usec)	RCAL
Raw Data	819245	119.00	2274.00	2251.00	2241.00	109.25	7.00	0.9808
Interpolated	1300000	140.97	2253.66	2240.93	2235.60			

	ISS	BKS	BKL	BKX	SGA1	SDA1	SGA2	SDA2
Raw Data	819245	5919.25	962.48	136.92	25.83	0.14	24.23	0.28
					25.35 26.40	0.00 0.20	23.60 24.80	0.00 0.40

	ISS	ILS	IXS	SS	SS2	LS	CSS	CLS
Raw Data	819245	168936.23	26190.87	88936.02	31684.52	8271.11	53822.45	13235.05
Fit Quality %		3.08	2.94	2.87	2.87	2.72	2.81	2.82

	ISS	RBOR	RIN ISS/ILS	RIN13 ISS/IXS	RICS ISS/CSS	RATO SS/LS	RTWO SS2/LS	RONE CSS/CLS
Raw Data	819245	1.43	4.85	31.28	15.22	10.75	3.83	4.07
		1.42 1.45	3.55 5.52	22.20 32.70	10.99 16.34	10.06 11.10	3.57 3.95	3.76 4.22
Fit Quality %		0.11	0.98	1.00	0.90	0.09	0.10	0.09
Reduced	1262130	1.43	4.81	31.07	15.11	10.74	3.82	4.06
		1.42 1.45	4.33 5.52	27.60 32.70	13.70 16.34	10.06 11.10	3.57 3.95	3.76 4.22

GAMMA RAY

Calibration File: C:\case\calver\GR\382A1.cal

CALIBRATION SUMMARY

DATE/TIME PERFORMED: Sun Aug 17 18:00:30 2014 TOOL SERIES: 2812LA ASSET: 382 SEQ: A1

Calibrator #	Background [cps]	Calibrator On [cps]	Multiplicative	Background [api]	Calibrator On [api]	Differential [api]
SK2 WA612	42.82	251.20	1.008	43.16	253.16	210.00

Verification File: C:\case\calver\GR\382A1.VP

PRIMARY VERIFICATION

DATE/TIME PERFORMED: Sun Aug 17 18:03:34 2014 TOOL SERIES: 2812LA ASSET: 382 SEQ: A1

Calibrator #	Background [cps]	Calibrator On [cps]	Multiplicative	Background [api]	Calibrator On [api]	Differential [api]
SK2 WA612	44.24	248.18	1.008	44.59	250.11	205.52

TEMPERATURE

Calibration File: C:\case\calver\TEMP\120516F9.cal

CALIBRATION SUMMARY

DATE/TIME PERFORMED: 9 AUG 2010 TOOL SERIES: 8255XA ASSET: 120516 SEQ: F9

	T(0)	T(1)	T(2)	T(3)	T(4)	T(5)
Coefficients	-1.865430e+001	1.014947e-001	2.890430e-006	-4.406077e-010	0.000000e+000	0.000000e+000

TOOL DIAGRAM

OTA SHORT CABLE HEAD

PCM POWER SUPPLY

Series	8250EA
Mnemonic	PCM
Diameter	1.70"
Weight	18.00 lb
Length	3.86'
Temp Rating	350.00 °F

TELEMETRY / CCL

Series	8248EA
Mnemonic	PCM
Diameter	1.70"
Weight	20.00 lb
Length	4.46'
Measure Point	1.00' CCL MP
Temp Rating	350.00 °F
Press Rating	15000.00 PSI

SONDEX GAMMA RAY

Series	2812LA
Mnemonic	SNDX
Diameter	1.69"

33.24'

CCL MP 25.15'

MP 22.70'

XLS DETECTOR 16.08'

RESERVOIR PERFORMANCE MONITOR

Series	8281XA
Mnemonic	RPM
Diameter	1.70"
Weight	75.00 lb
Length	18.58'
Measure Point	9.49' SS DETECTOR
Measure Point	9.72' LS DETECTOR
Measure Point	12.69' XLS DETECTOR
Temp Rating	350.00 °F
Press Rating	20000.00 PSI

LS DETECTOR	13.10'
SS DETECTOR	12.88'

TEMPERATURE / PRESSURE

Series	8255XA
Mnemonic	SRPL
Diameter	1.70"
Weight	13.00 lb
Length	3.30'

PRES MP	1.61'
---------	-------

0.00'

Total Length: 33.24'
Total Weight: Not Available
Max Diameter: 0' 1.70"

**Baker Atlas***CASE*

Company	WPX ENERGY
Well	AP 321-20-695
Field	PARACHUTE
County	GARFIELD

State	CO
--------------	-----------

Location

SHL: 54' FNL & 2493' FWL
BHL: 144' FNL & 715' FWL

SEC	20	TWP	6S	RGE	95W
------------	-----------	------------	-----------	------------	------------

Elevations

KB	6935
DF	
GL	6909

File No:**CH089260****API No:****05045213820000****20 6S 95W****AP 21-20-695 PAD****NABORS 573**