

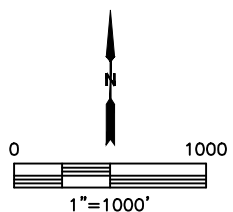
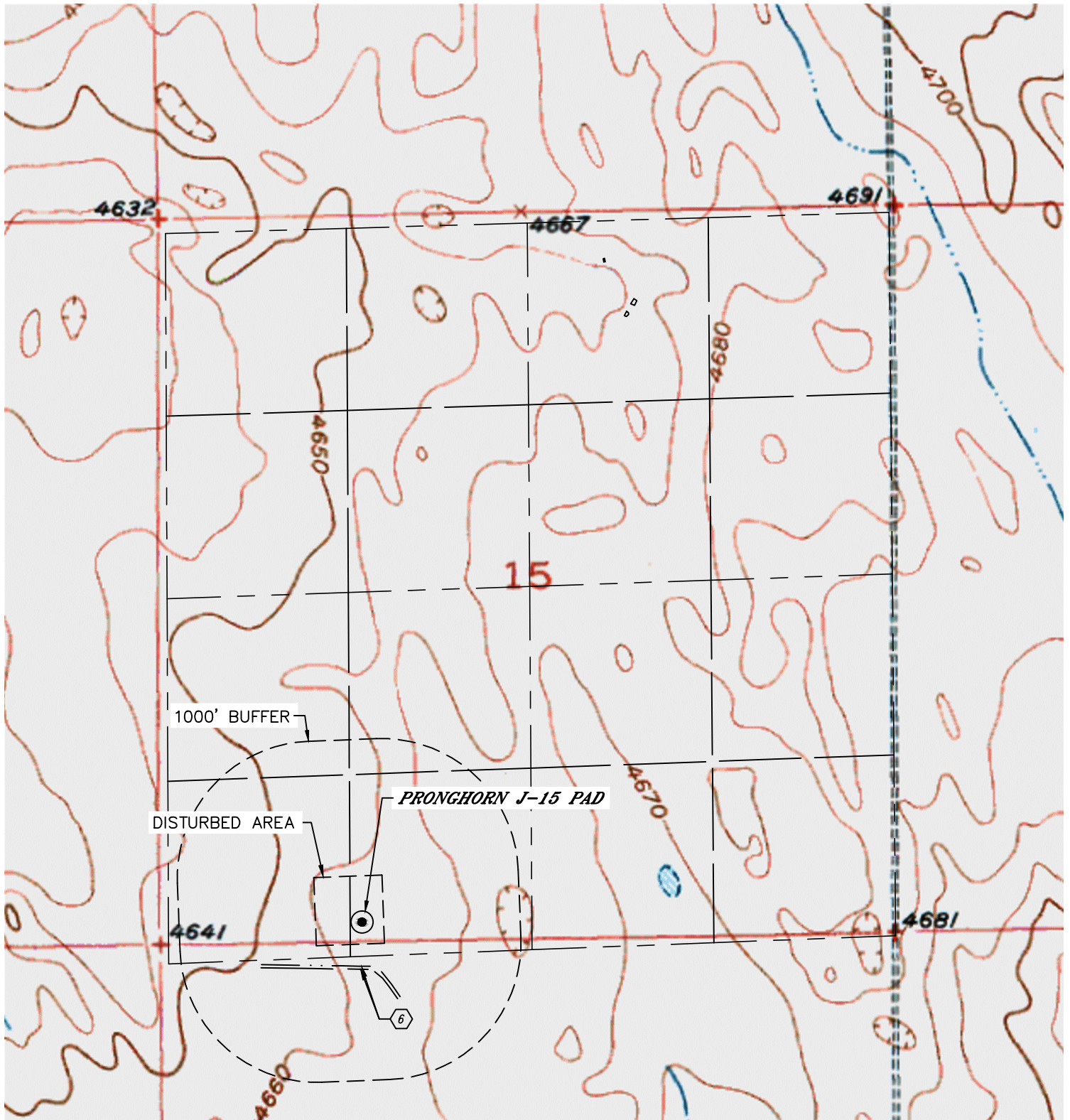


Lat40°, Inc. 6250 W. 10th Street, Unit 2, Greeley, CO 970-515-5294

HYDROLOGY MAP

PRONGHORN J-15 PAD

SECTION: 15
TOWNSHIP: 5N
RANGE: 61W
6TH. P.M.
WELD COUNTY, CO



⬡ BARROW DITCH 323' & 345' S

DATE: 10/27/2014
PROJECT#: 2012073