



Lat40°, Inc. 6250 W. 10th Street, Unit 2, Greeley, CO 970-515-5294

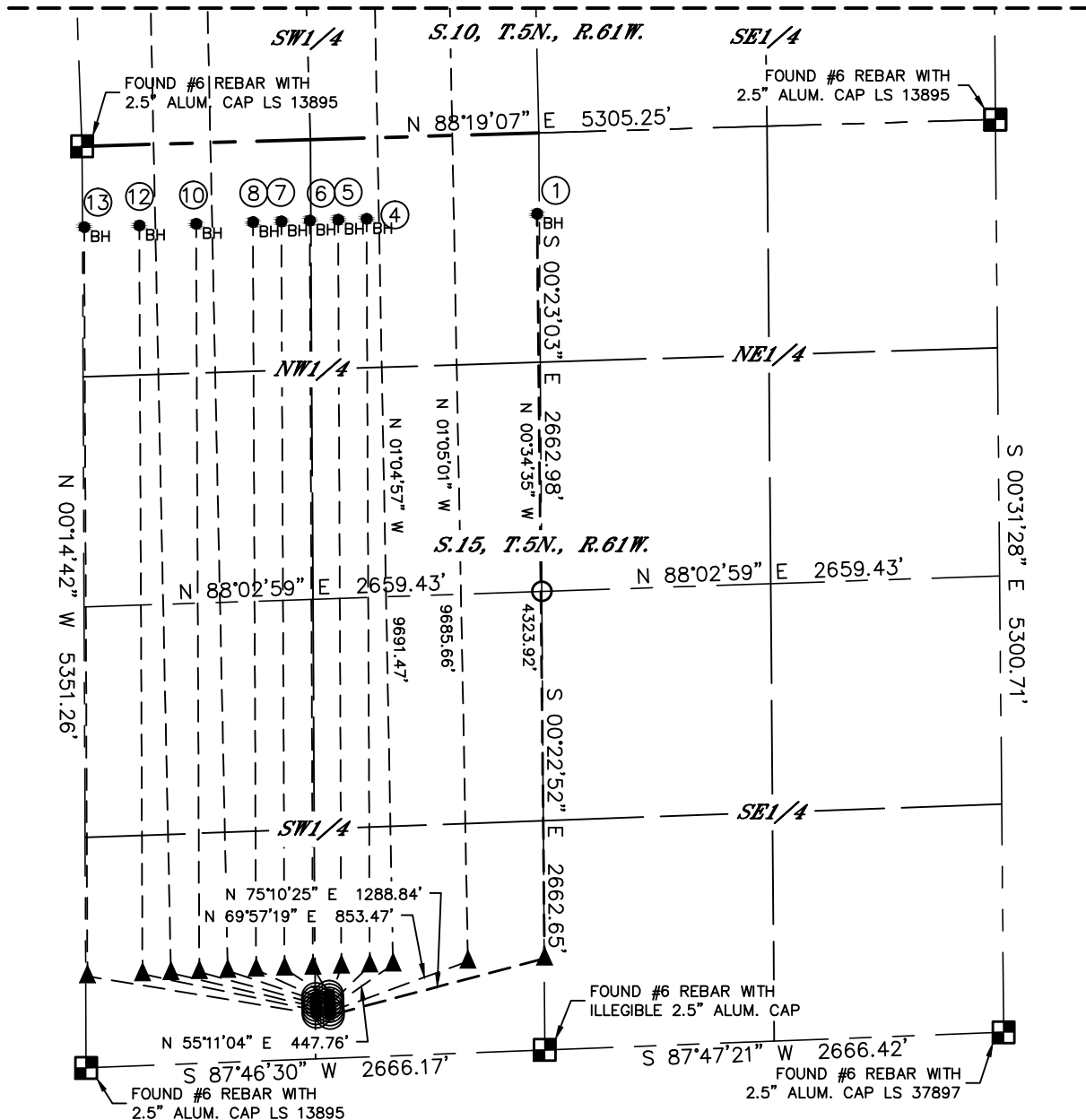
MULTI-WELL PLAN

PRONGHORN J-15 PAD

THIS MAP DOES NOT REPRESENT A BOUNDARY SURVEY

SEE SHEET 2 OF 3

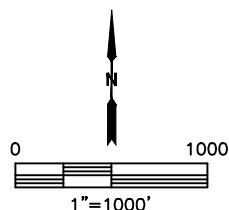
SECTION: 15
TOWNSHIP: 5N
RANGE: 61W
6TH. P.M.
WELD COUNTY, CO



#	WELL NAME	SHL FOOTAGE	SHL LAT°	SHL LONG°	SHL PDOP	SHL ELEV	SHL 1/4/1/4
1	PRONGHORN O-K-15HNC	250 FSL 1418 FWL	40.39436	-104.19934	2.4	4669	SESW
4	PRONGHORN A4-15	310 FSL 1416 FWL	40.39453	-104.19934	2.4	4668	SESW
5	PRONGHORN A5-15	330 FSL 1415 FWL	40.39458	-104.19934	2.4	4668	SESW
6	PRONGHORN A6-15	350 FSL 1414 FWL	40.39464	-104.19934	2.4	4668	SESW
7	PRONGHORN A7-15	370 FSL 1414 FWL	40.39469	-104.19935	2.8	4667	SESW
8	PRONGHORN B1-15	260 FSL 1337 FWL	40.39439	-104.19962	2.9	4668	SESW
10	PRONGHORN B3-15	300 FSL 1336 FWL	40.39450	-104.19963	2.9	4668	SESW
12	PRONGHORN B5-15	340 FSL 1335 FWL	40.39461	-104.19963	3.0	4668	SESW
13	PRONGHORN B6-15	360 FSL 1334 FWL	40.39466	-104.19963	3.0	4667	SESW

LEGEND

- = ALIQUOT MONUMENT AS DESCRIBED
- = CALCULATED POSITION
- = SURFACE HOLE LOCATION (SHL)
- ▲ = ENTRY POINT LOCATION (EP)
- BH = BOTTOM HOLE LOCATION (BHL)





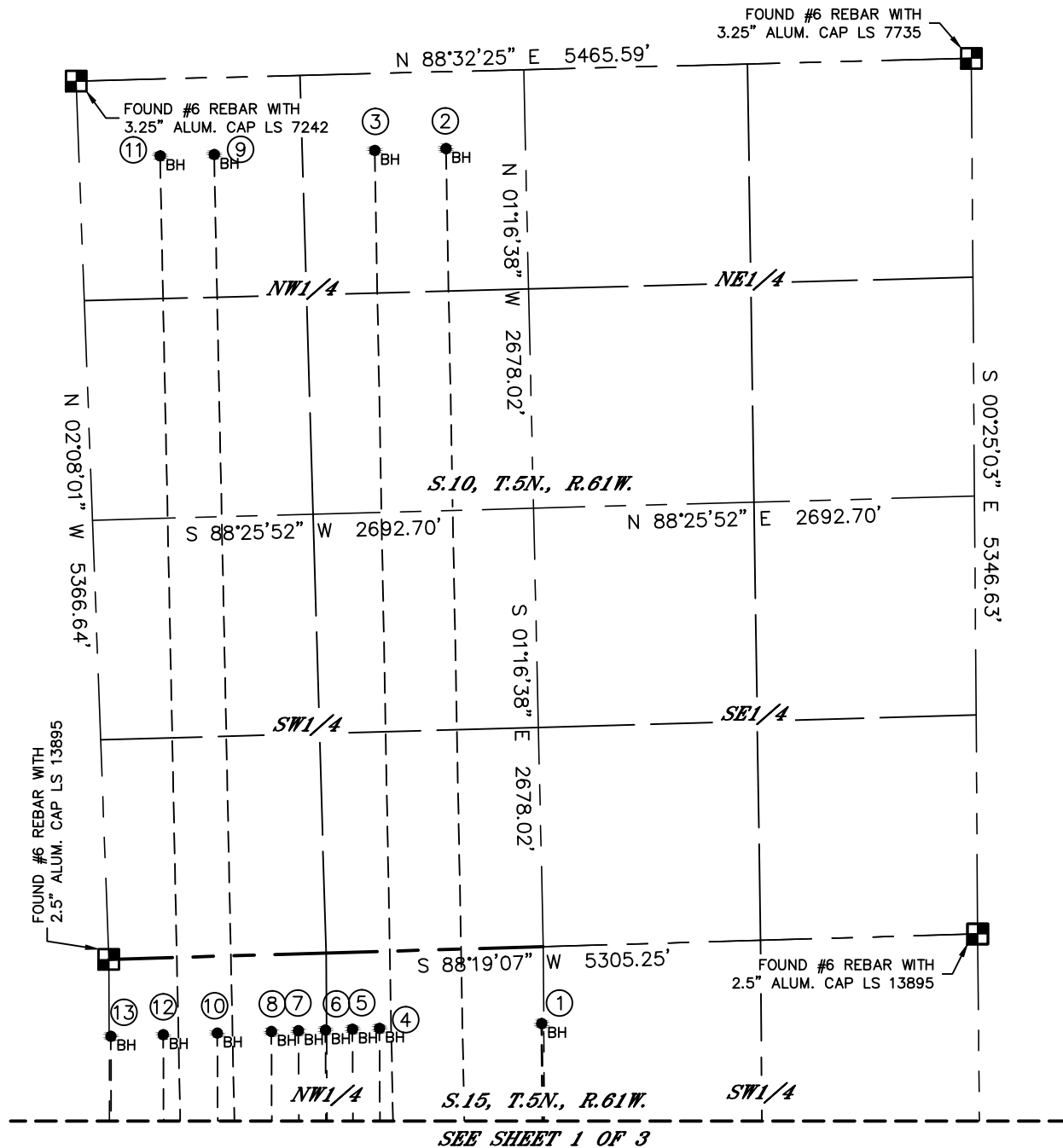
Lat40°, Inc. 6250 W. 10th Street, Unit 2, Greeley, CO 970-515-5294

MULTI-WELL PLAN

PRONGHORN J-15 PAD

THIS MAP DOES NOT REPRESENT A BOUNDARY SURVEY

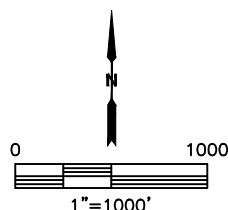
SECTION: 15
TOWNSHIP: 5N
RANGE: 61W
6TH. P.M.
WELD COUNTY, CO



#	WELL NAME	SHL FOOTAGE	SHL LAT °	SHL LONG °	SHL PDOP	SHL ELEV	SHL 1/4/1/4
2	PRONGHORN O24-15-10XRLNB	270 FSL 1417 FWL	40.39442	-104.19934	2.4	4669	SESW
3	PRONGHORN J24-15-10XRLNC	290 FSL 1416 FWL	40.39447	-104.19934	2.4	4669	SESW
9	PRONGHORN B2-15	280 FSL 1337 FWL	40.39444	-104.19962	2.9	4668	SESW
11	PRONGHORN B4-15	320 FSL 1335 FWL	40.39455	-104.19963	2.9	4668	SESW

LEGEND

- = ALIQUOT MONUMENT AS DESCRIBED
- = CALCULATED POSITION
- = SURFACE HOLE LOCATION (SHL)
- ▲ = ENTRY POINT LOCATION (EP)
- _{BH} = BOTTOM HOLE LOCATION (BHL)





Lat40°, Inc. 6250 W. 10th Street, Unit 2, Greeley, CO 970-515-5294

MULTI-WELL PLAN

PRONGHORN J-15 PAD

SECTION: 15
TOWNSHIP: 5N
RANGE: 61W
6TH. P.M.
WELD COUNTY, CO

