



Lat40°, Inc. 6250 W. 10th Street, Unit 2, Greeley, CO 970-515-5294

## ACCESS ROAD MAP

### PRONGHORN J-15 PAD

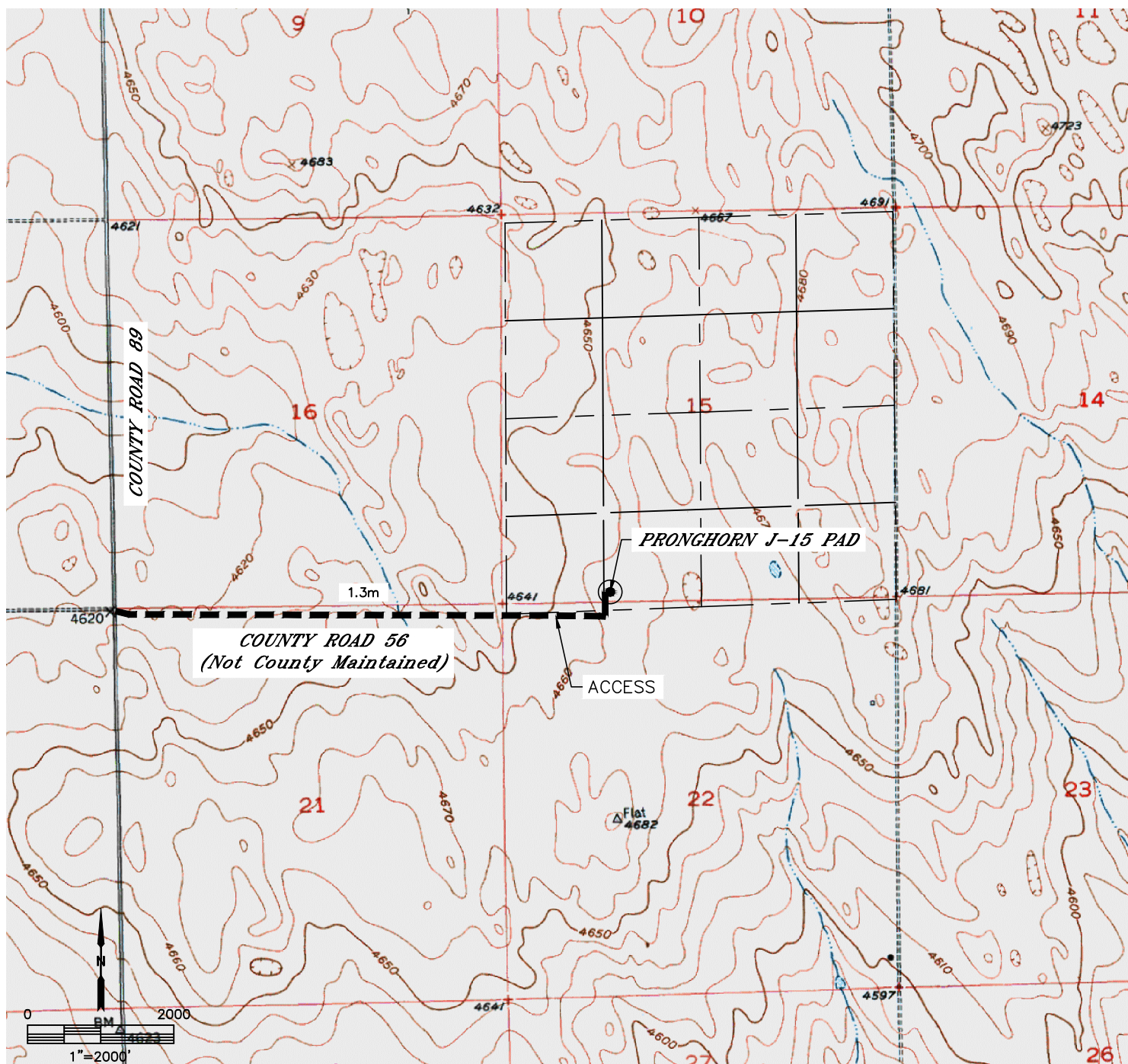
SECTION: 15  
TOWNSHIP: 5N  
RANGE: 61W  
6TH. P.M.  
WELD COUNTY, CO

EXISTING WELLS:  
NONE

PROPOSED WELLS:  
PRONGHORN O-K-15HNC  
PRONGHORN O24-15-10XRLNB  
PRONGHORN J24-15-10XRLNC

#### DRIVING DIRECTIONS TO THE PRONGHORN J-15 PAD

FROM THE INTERSECTION OF COUNTY ROADS 89 AND 56, DRIVE EAST ON COUNTY ROAD 56 FOR 1.3 MILES TO THE PAD ACCESS ROAD, DRIVE NORTH ALONG THE PAD ACCESS ROAD TO THE PRONGHORN J-15 PAD.





Lat40°, Inc. 6250 W. 10th Street, Unit 2, Greeley, CO 970-515-5294

# ACCESS ROAD MAP

PRONGHORN J-15 PAD

SECTION: 15  
TOWNSHIP: 5N  
RANGE: 61W  
6TH. P.M.  
WELD COUNTY, CO

