

BONANZA CREEK ENERGY INC.

WELD COUNTY, COLORADO (NAD 83)

SW SW SEC. 28 T5N R61W 6th P.M.

PRONGHORN C-W-28HNC

ORIGINAL WELLBORE

03 November, 2014

Plan: PROPOSAL #1

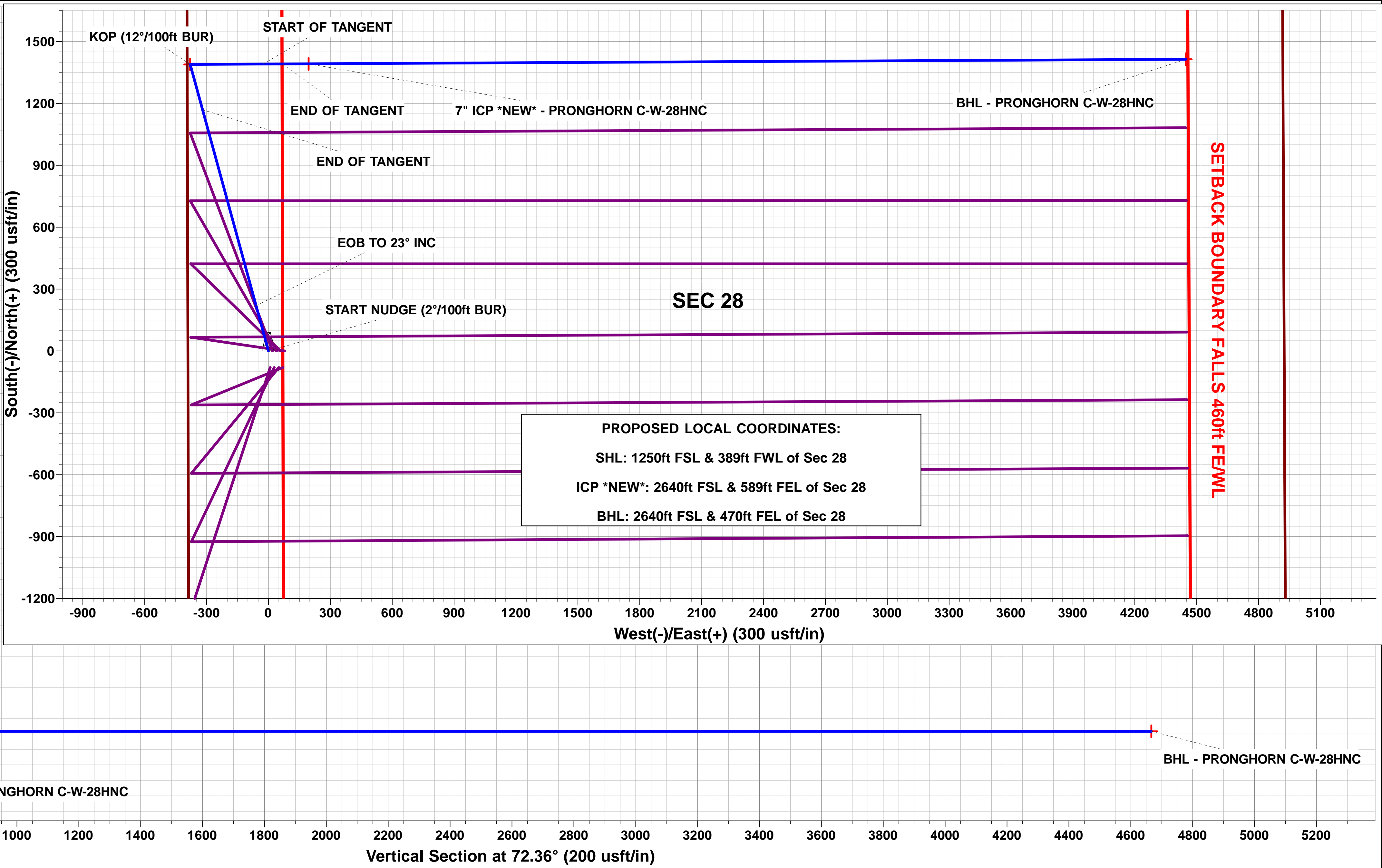
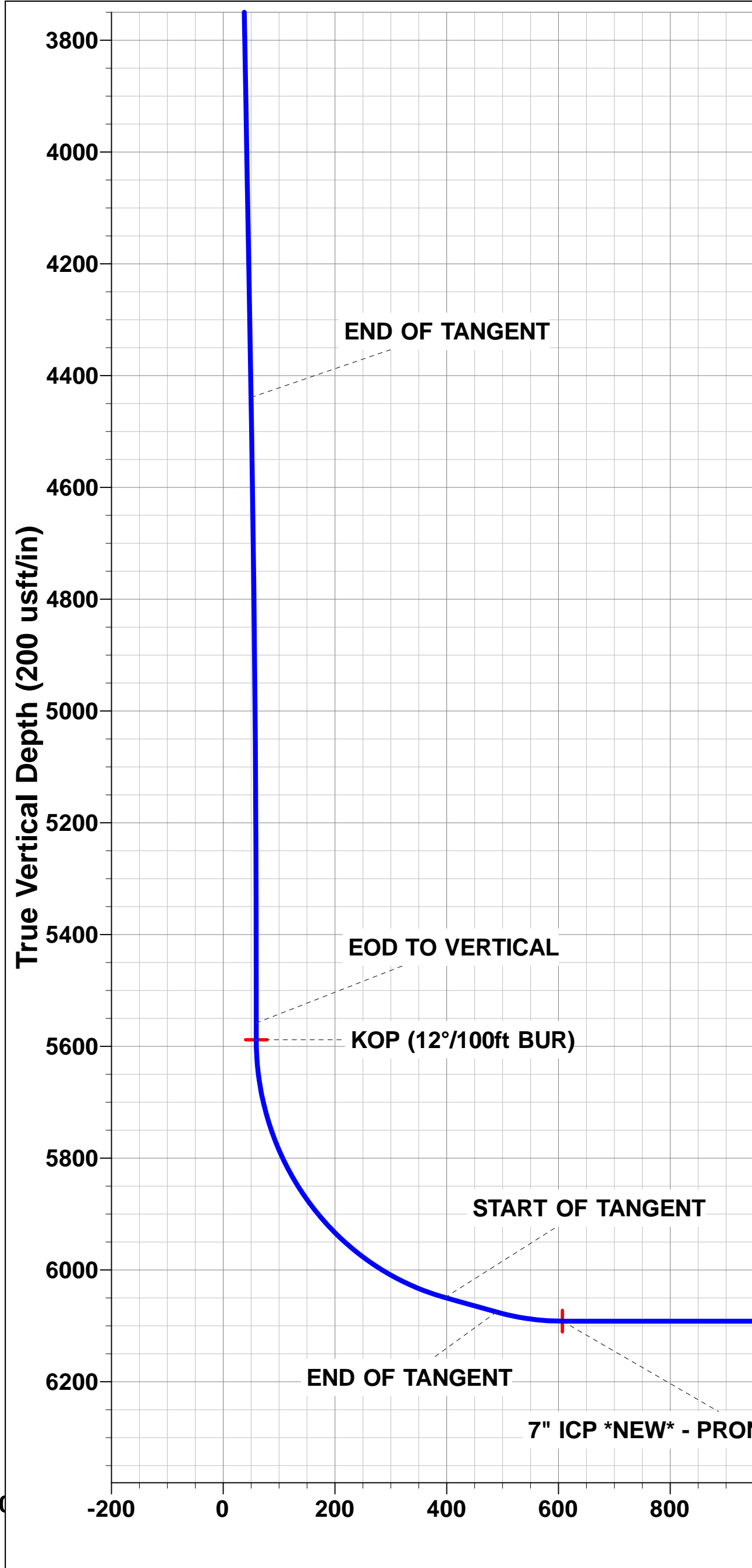
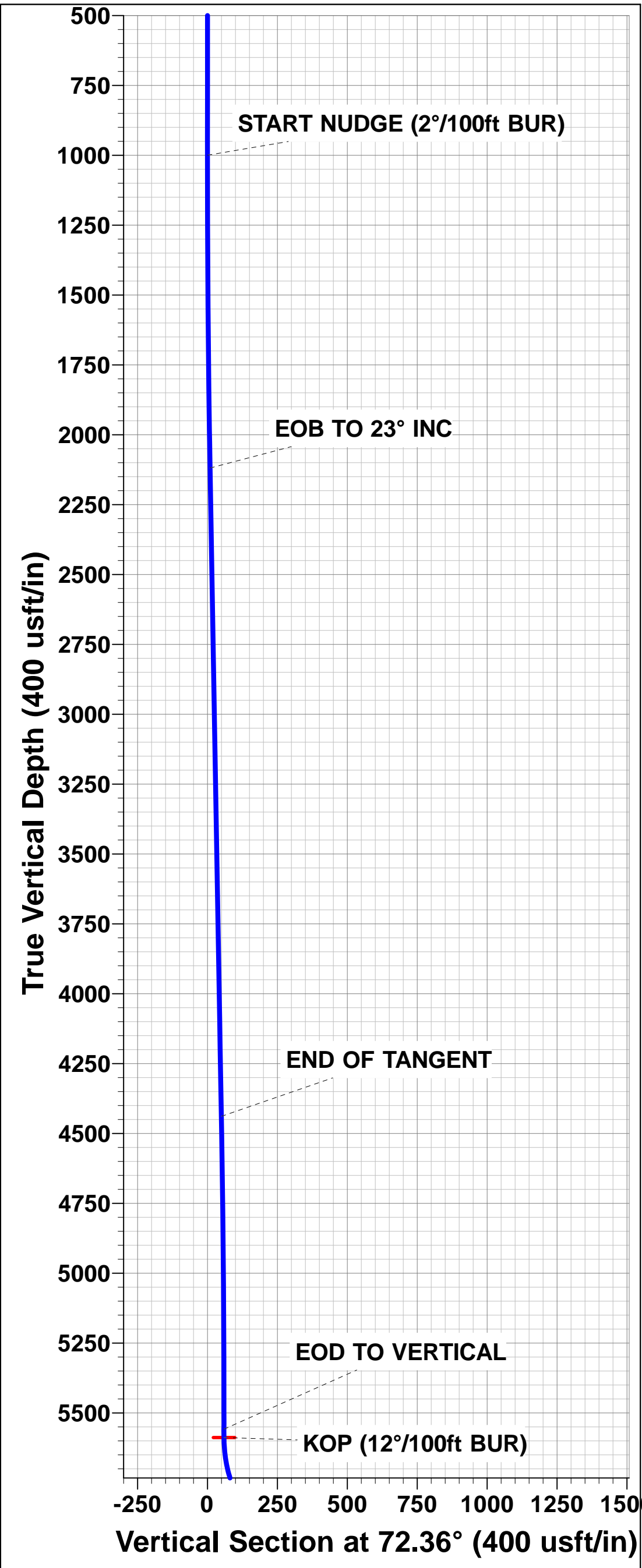
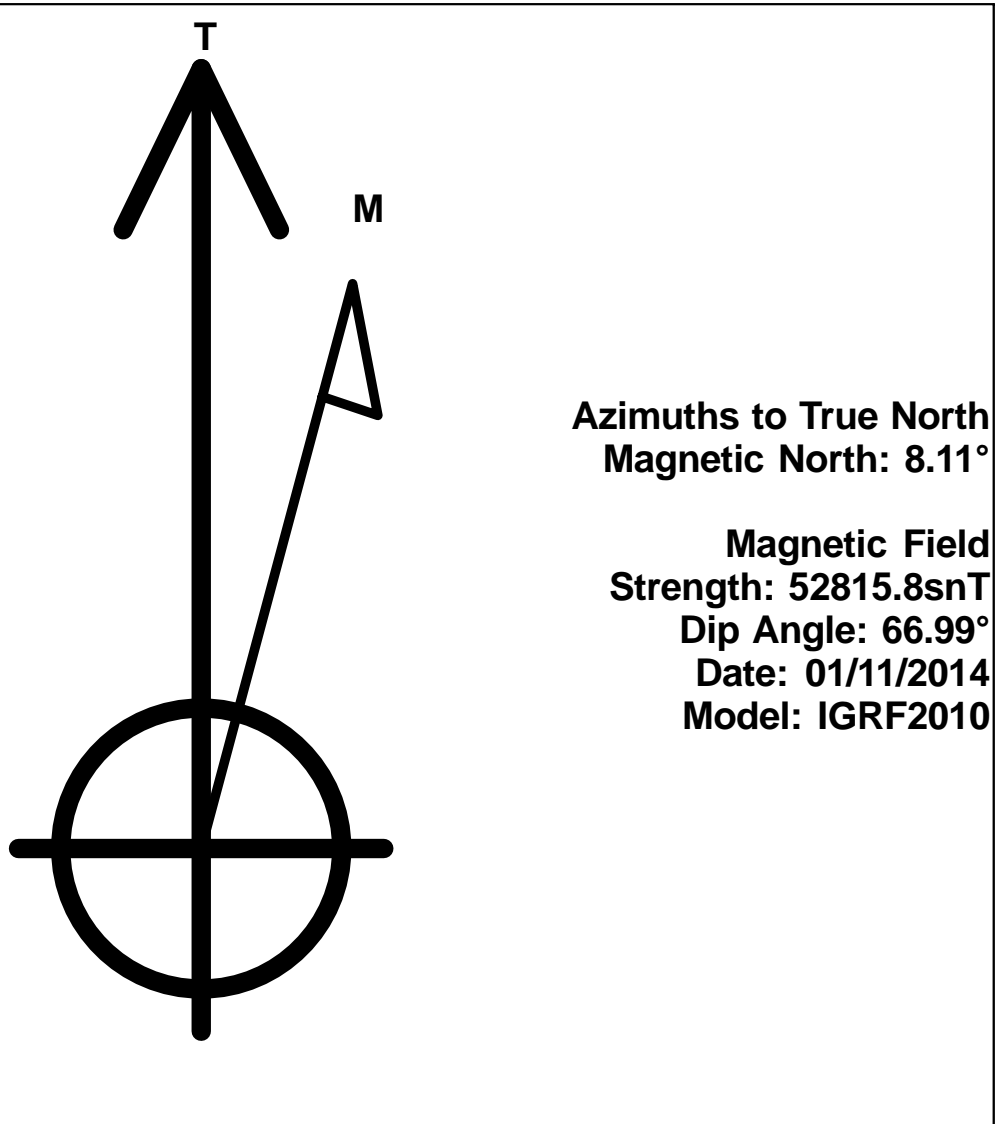
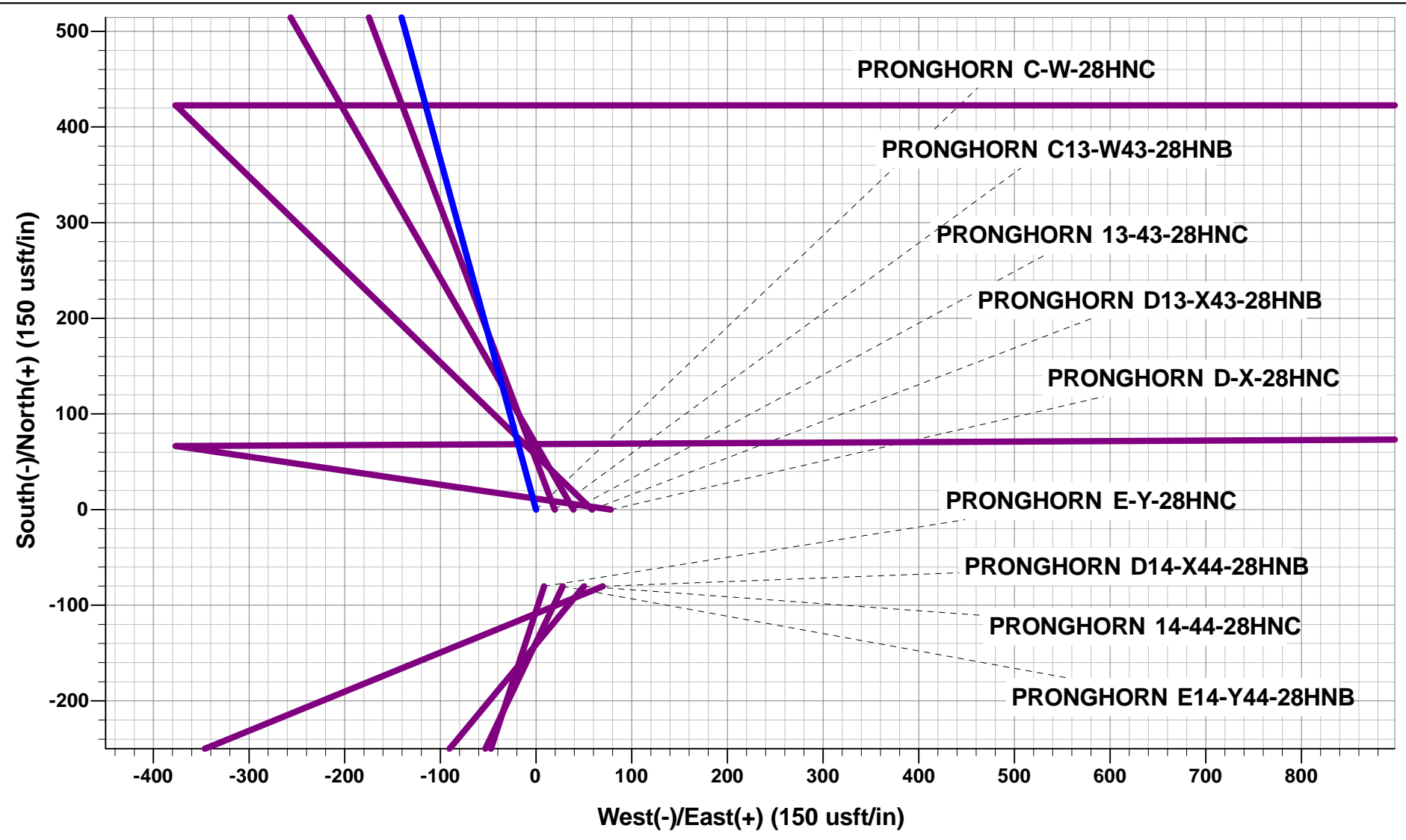




Project: WELD COUNTY, COLORADO (NAD 83)
Site: SW SW SEC. 28 T5N R61W 6th P.M.
Well: PRONGHORN C-W-28HNC
Wellbore: ORIGINAL WELLBORE
Design: PROPOSAL #1

ANNOTATIONS									
TVD	MD	Inc	Azi	+N/-S	+E/-W	Vsect	Dep	Annotation	
1000.0	1000.0	0.00	0.00	0.0	0.0	0.0	0.0	START NUDGE (2°/100ft BUR)	
2119.2	2149.8	23.00	344.72	219.6	-60.0	9.4	227.7	EOB TO 23° INC	
4439.1	4670.0	23.00	344.72	1169.4	-319.5	49.8	1212.2	END OF TANGENT	
5558.3	5819.8	0.00	0.00	1389.0	-379.5	59.2	1439.9	EOD TO VERTICAL	
5588.3	5849.8	0.00	0.00	1389.0	-379.5	59.2	1439.9	KOP (12°/100ft BUR)	
6049.5	6474.8	75.00	89.70	1390.9	-25.6	397.0	1793.8	START OF TANGENT	
6075.4	6574.8	75.00	89.70	1391.4	71.0	489.2	1890.4	END OF TANGENT	
6091.6	6699.8	90.00	89.70	1392.0	194.5	607.2	2014.0	7" ICP - PRONGHORN C-W-28HNC	
6091.6	10952.4	90.00	89.71	1413.9	4447.1	4666.4	6266.5	BHL - PRONGHORN C-W-28HNC	

WELLBORE TARGET DETAILS (LAT/LONG)						
Name	TVD	+N/-S	+E/-W	Latitude	Longitude	
KOP - PRONGHORN C-W-28HNC	5588.3	1389.0	-379.5	40.371823	-104.223552	
BHL - PRONGHORN C-W-28HNC	6091.6	1413.9	4447.1	40.371890	-104.206230	
7" ICP *NEW* - PRONGHORN C-W-28HNC	6091.6	1392.0	194.5	40.371831	-104.221492	



Planning Report



Database:	EDM 5000.1 Single User Db	Local Co-ordinate Reference:	Well PRONGHORN C-W-28HNC
Company:	BONANZA CREEK ENERGY INC.	TVD Reference:	KB-EST @ 4614.6usft (Original Well Elev)
Project:	WELD COUNTY, COLORADO (NAD 83)	MD Reference:	KB-EST @ 4614.6usft (Original Well Elev)
Site:	SW SW SEC. 28 T5N R61W 6th P.M.	North Reference:	True
Well:	PRONGHORN C-W-28HNC	Survey Calculation Method:	Minimum Curvature
Wellbore:	ORIGINAL WELLBORE		
Design:	PROPOSAL #1		

Project	WELD COUNTY, COLORADO (NAD 83)		
Map System:	US State Plane 1983	System Datum:	Mean Sea Level
Geo Datum:	North American Datum 1983		
Map Zone:	Colorado Northern Zone		Using geodetic scale factor

Site	SW SW SEC. 28 T5N R61W 6th P.M.		
Site Position:		Northing:	1,379,471.89 usft
From:	Lat/Long	Easting:	3,356,038.93 usft
Position Uncertainty:	0.0 usft	Slot Radius:	1.10000ft
		Latitude:	40.368010
		Longitude:	-104.222190
		Grid Convergence:	0.83 °

Well	PRONGHORN C-W-28HNC		
Well Position	+N/-S	0.0 usft	Northing: 1,379,471.89 usft
	+E/-W	0.0 usft	Easting: 3,356,038.93 usft
Position Uncertainty	0.0 usft	Wellhead Elevation:	usft
		Latitude:	40.368010
		Longitude:	-104.222190
		Ground Level:	4,597.6 usft

Wellbore	ORIGINAL WELLBORE				
Magnetics	Model Name	Sample Date	Declination (°)	Dip Angle (°)	Field Strength (nT)
	IGRF2010	01/11/2014	8.11	66.99	52,816

Design	PROPOSAL #1			
Audit Notes:				
Version:	Phase:	PROTOTYPE	Tie On Depth:	0.0
Vertical Section:	Depth From (TVD) (usft)	+N/-S (usft)	+E/-W (usft)	Direction (°)
	6,091.6	0.0	0.0	72.36

Plan Sections											
MD (usft)	Inc (°)	Azi (°)	Vertical Depth	SS (usft)	+N/-S (usft)	+E/-W (usft)	Dogleg Rate (°/100usf)	Build Rate (°/100usf)	Turn Rate (°/100usf)	TFO (°)	Target
0.0	0.00	0.00	0.0	-4,614.6	0.0	0.0	0.00	0.00	0.00	0.00	
1,000.0	0.00	0.00	1,000.0	-3,614.6	0.0	0.0	0.00	0.00	0.00	0.00	
2,149.8	23.00	344.72	2,119.2	-2,495.4	219.6	-60.0	2.00	2.00	0.00	344.72	
4,670.0	23.00	344.72	4,439.1	-175.5	1,169.4	-319.5	0.00	0.00	0.00	0.00	
5,819.8	0.00	0.00	5,558.3	943.7	1,389.0	-379.5	2.00	-2.00	0.00	180.00	
5,849.8	0.00	0.00	5,588.3	973.7	1,389.0	-379.5	0.00	0.00	0.00	0.00	KOP - PRONGHOF
6,474.8	75.00	89.70	6,049.5	1,434.9	1,390.9	-25.6	12.00	12.00	0.00	89.70	
6,574.8	75.00	89.70	6,075.4	1,460.8	1,391.4	71.0	0.00	0.00	0.00	0.00	
6,699.8	90.00	89.70	6,091.6	1,477.0	1,392.0	194.5	12.00	12.00	0.00	0.00	
10,952.4	90.00	89.71	6,091.6	1,477.0	1,413.9	4,447.1	0.00	0.00	0.00	82.41	BHL - PRONGHOR

Planning Report



Database:	EDM 5000.1 Single User Db	Local Co-ordinate Reference:	Well PRONGHORN C-W-28HNC
Company:	BONANZA CREEK ENERGY INC.	TVD Reference:	KB-EST @ 4614.6usft (Original Well Elev)
Project:	WELD COUNTY, COLORADO (NAD 83)	MD Reference:	KB-EST @ 4614.6usft (Original Well Elev)
Site:	SW SW SEC. 28 T5N R61W 6th P.M.	North Reference:	True
Well:	PRONGHORN C-W-28HNC	Survey Calculation Method:	Minimum Curvature
Wellbore:	ORIGINAL WELLBORE		
Design:	PROPOSAL #1		

Planned Survey										
MD (usft)	Inc (°)	Azi (°)	TVD (usft)	SS (usft)	+N/-S (usft)	+E/-W (usft)	Vertical Section (usft)	Dogleg Rate (°/100usft)	Build Rate (°/100usft)	Turn Rate (°/100usft)
0.0	0.00	0.00	0.0	4,614.60	0.0	0.0	0.0	0.00	0.00	0.00
100.0	0.00	0.00	100.0	4,514.60	0.0	0.0	0.0	0.00	0.00	0.00
200.0	0.00	0.00	200.0	4,414.60	0.0	0.0	0.0	0.00	0.00	0.00
300.0	0.00	0.00	300.0	4,314.60	0.0	0.0	0.0	0.00	0.00	0.00
400.0	0.00	0.00	400.0	4,214.60	0.0	0.0	0.0	0.00	0.00	0.00
500.0	0.00	0.00	500.0	4,114.60	0.0	0.0	0.0	0.00	0.00	0.00
600.0	0.00	0.00	600.0	4,014.60	0.0	0.0	0.0	0.00	0.00	0.00
700.0	0.00	0.00	700.0	3,914.60	0.0	0.0	0.0	0.00	0.00	0.00
800.0	0.00	0.00	800.0	3,814.60	0.0	0.0	0.0	0.00	0.00	0.00
900.0	0.00	0.00	900.0	3,714.60	0.0	0.0	0.0	0.00	0.00	0.00
START NUDGE (2°/100ft BUR)										
1,000.0	0.00	0.00	1,000.0	3,614.60	0.0	0.0	0.0	0.00	0.00	0.00
1,100.0	2.00	344.72	1,100.0	3,514.62	1.7	-0.5	0.1	2.00	2.00	0.00
1,200.0	4.00	344.72	1,199.8	3,414.76	6.7	-1.8	0.3	2.00	2.00	0.00
1,300.0	6.00	344.72	1,299.5	3,315.15	15.1	-4.1	0.6	2.00	2.00	0.00
1,400.0	8.00	344.72	1,398.7	3,215.90	26.9	-7.3	1.1	2.00	2.00	0.00
1,500.0	10.00	344.72	1,497.5	3,117.13	42.0	-11.5	1.8	2.00	2.00	0.00
1,600.0	12.00	344.72	1,595.6	3,018.98	60.4	-16.5	2.6	2.00	2.00	0.00
1,700.0	14.00	344.72	1,693.1	2,921.54	82.1	-22.4	3.5	2.00	2.00	0.00
1,800.0	16.00	344.72	1,789.6	2,824.96	107.1	-29.2	4.6	2.00	2.00	0.00
1,900.0	18.00	344.72	1,885.3	2,729.33	135.3	-37.0	5.8	2.00	2.00	0.00
2,000.0	20.00	344.72	1,979.8	2,634.78	166.7	-45.5	7.1	2.00	2.00	0.00
2,100.0	22.00	344.72	2,073.2	2,541.43	201.2	-55.0	8.6	2.00	2.00	0.00
EOB TO 23° INC										
2,149.8	23.00	344.72	2,119.2	2,495.40	219.6	-60.0	9.4	2.00	2.00	0.00
2,200.0	23.00	344.72	2,165.4	2,449.21	238.5	-65.2	10.2	0.00	0.00	0.00
2,300.0	23.00	344.72	2,257.4	2,357.16	276.2	-75.5	11.8	0.00	0.00	0.00
2,400.0	23.00	344.72	2,349.5	2,265.11	313.9	-85.8	13.4	0.00	0.00	0.00
2,500.0	23.00	344.72	2,441.5	2,173.05	351.6	-96.1	15.0	0.00	0.00	0.00
2,600.0	23.00	344.72	2,533.6	2,081.00	389.3	-106.4	16.6	0.00	0.00	0.00
2,700.0	23.00	344.72	2,625.7	1,988.95	427.0	-116.7	18.2	0.00	0.00	0.00
2,800.0	23.00	344.72	2,717.7	1,896.89	464.6	-126.9	19.8	0.00	0.00	0.00
2,900.0	23.00	344.72	2,809.8	1,804.84	502.3	-137.2	21.4	0.00	0.00	0.00
3,000.0	23.00	344.72	2,901.8	1,712.79	540.0	-147.5	23.0	0.00	0.00	0.00
3,100.0	23.00	344.72	2,993.9	1,620.74	577.7	-157.8	24.6	0.00	0.00	0.00
3,200.0	23.00	344.72	3,085.9	1,528.68	615.4	-168.1	26.2	0.00	0.00	0.00
3,300.0	23.00	344.72	3,178.0	1,436.63	653.1	-178.4	27.8	0.00	0.00	0.00
3,400.0	23.00	344.72	3,270.0	1,344.58	690.8	-188.7	29.4	0.00	0.00	0.00
3,500.0	23.00	344.72	3,362.1	1,252.52	728.4	-199.0	31.1	0.00	0.00	0.00
3,600.0	23.00	344.72	3,454.1	1,160.47	766.1	-209.3	32.7	0.00	0.00	0.00
3,700.0	23.00	344.72	3,546.2	1,068.42	803.8	-219.6	34.3	0.00	0.00	0.00
3,800.0	23.00	344.72	3,638.2	976.37	841.5	-229.9	35.9	0.00	0.00	0.00
3,900.0	23.00	344.72	3,730.3	884.31	879.2	-240.2	37.5	0.00	0.00	0.00
4,000.0	23.00	344.72	3,822.3	792.26	916.9	-250.5	39.1	0.00	0.00	0.00
4,100.0	23.00	344.72	3,914.4	700.21	954.6	-260.8	40.7	0.00	0.00	0.00
4,200.0	23.00	344.72	4,006.4	608.15	992.3	-271.1	42.3	0.00	0.00	0.00
4,300.0	23.00	344.72	4,098.5	516.10	1,029.9	-281.4	43.9	0.00	0.00	0.00
4,400.0	23.00	344.72	4,190.6	424.05	1,067.6	-291.7	45.5	0.00	0.00	0.00
4,500.0	23.00	344.72	4,282.6	332.00	1,105.3	-302.0	47.1	0.00	0.00	0.00
4,600.0	23.00	344.72	4,374.7	239.94	1,143.0	-312.3	48.7	0.00	0.00	0.00
END OF TANGENT										
4,670.0	23.00	344.72	4,439.1	175.50	1,169.4	-319.5	49.8	0.00	0.00	0.00
4,700.0	22.40	344.72	4,466.8	147.83	1,180.5	-322.5	50.3	2.00	-2.00	0.00

Planning Report



Database:	EDM 5000.1 Single User Db	Local Co-ordinate Reference:	Well PRONGHORN C-W-28HNC
Company:	BONANZA CREEK ENERGY INC.	TVD Reference:	KB-EST @ 4614.6usft (Original Well Elev)
Project:	WELD COUNTY, COLORADO (NAD 83)	MD Reference:	KB-EST @ 4614.6usft (Original Well Elev)
Site:	SW SW SEC. 28 T5N R61W 6th P.M.	North Reference:	True
Well:	PRONGHORN C-W-28HNC	Survey Calculation Method:	Minimum Curvature
Wellbore:	ORIGINAL WELLBORE		
Design:	PROPOSAL #1		

Planned Survey

MD (usft)	Inc (°)	Azi (°)	TVD (usft)	SS (usft)	+N/-S (usft)	+E/-W (usft)	Vertical Section (usft)	Dogleg Rate (°/100usft)	Build Rate (°/100usft)	Turn Rate (°/100usft)
4,800.0	20.40	344.72	4,559.9	54.73	1,215.7	-332.2	51.8	2.00	-2.00	0.00
4,900.0	18.40	344.72	4,654.2	-39.59	1,247.8	-340.9	53.2	2.00	-2.00	0.00
5,000.0	16.40	344.72	4,749.6	-135.01	1,276.6	-348.8	54.4	2.00	-2.00	0.00
5,100.0	14.40	344.72	4,846.0	-231.42	1,302.2	-355.8	55.5	2.00	-2.00	0.00
5,200.0	12.40	344.72	4,943.3	-328.69	1,324.6	-361.9	56.5	2.00	-2.00	0.00
5,300.0	10.40	344.72	5,041.3	-426.72	1,343.6	-367.1	57.3	2.00	-2.00	0.00
5,400.0	8.40	344.72	5,140.0	-525.37	1,359.4	-371.4	57.9	2.00	-2.00	0.00
5,500.0	6.40	344.72	5,239.1	-624.53	1,371.8	-374.8	58.5	2.00	-2.00	0.00
5,600.0	4.40	344.72	5,338.7	-724.09	1,380.9	-377.3	58.9	2.00	-2.00	0.00
5,700.0	2.40	344.72	5,438.5	-823.90	1,386.6	-378.8	59.1	2.00	-2.00	0.00
5,800.0	0.40	344.72	5,538.5	-923.87	1,388.9	-379.5	59.2	2.00	-2.00	0.00
EOD TO VERTICAL										
5,819.8	0.00	0.00	5,558.3	-943.70	1,389.0	-379.5	59.2	2.00	-2.00	0.00
KOP (12°/100ft BUR)										
5,849.8	0.00	0.00	5,588.3	-973.70	1,389.0	-379.5	59.2	0.00	0.00	0.00
5,900.0	6.02	89.70	5,638.4	-1,023.78	1,389.0	-376.9	61.7	12.00	12.00	0.00
6,000.0	18.02	89.70	5,736.0	-1,121.41	1,389.1	-356.1	81.6	12.00	12.00	0.00
6,100.0	30.02	89.70	5,827.2	-1,212.58	1,389.3	-315.4	120.3	12.00	12.00	0.00
6,200.0	42.02	89.70	5,907.9	-1,293.31	1,389.6	-256.7	176.4	12.00	12.00	0.00
6,300.0	54.02	89.70	5,974.7	-1,360.08	1,390.0	-182.5	247.2	12.00	12.00	0.00
6,400.0	66.02	89.70	6,024.6	-1,409.95	1,390.5	-96.1	329.7	12.00	12.00	0.00
START OF TANGENT										
6,474.8	75.00	89.70	6,049.5	-1,434.90	1,390.9	-25.6	397.0	12.00	12.00	0.00
6,500.0	75.00	89.70	6,056.0	-1,441.41	1,391.0	-1.3	420.2	0.00	0.00	0.00
END OF TANGENT										
6,574.8	75.00	89.70	6,075.4	-1,460.78	1,391.4	71.0	489.2	0.00	0.00	0.00
6,600.0	78.02	89.70	6,081.2	-1,466.65	1,391.5	95.4	512.6	12.00	12.00	0.00
7" ICP - PRONGHORN C-W-28HNC										
6,699.8	90.00	89.70	6,091.6	-1,477.05	1,392.0	194.5	607.2	12.00	12.00	0.00
6,700.0	90.00	89.70	6,091.6	-1,477.05	1,392.0	194.7	607.3	0.00	0.00	0.00
6,800.0	90.00	89.70	6,091.6	-1,477.05	1,392.5	294.7	702.8	0.00	0.00	0.00
6,900.0	90.00	89.70	6,091.6	-1,477.05	1,393.1	394.7	798.3	0.00	0.00	0.00
7,000.0	90.00	89.70	6,091.6	-1,477.05	1,393.6	494.7	893.7	0.00	0.00	0.00
7,100.0	90.00	89.70	6,091.6	-1,477.05	1,394.1	594.7	989.2	0.00	0.00	0.00
7,200.0	90.00	89.70	6,091.6	-1,477.05	1,394.6	694.7	1,084.6	0.00	0.00	0.00
7,300.0	90.00	89.70	6,091.6	-1,477.05	1,395.1	794.7	1,180.1	0.00	0.00	0.00
7,400.0	90.00	89.70	6,091.6	-1,477.05	1,395.7	894.7	1,275.5	0.00	0.00	0.00
7,500.0	90.00	89.70	6,091.6	-1,477.05	1,396.2	994.7	1,371.0	0.00	0.00	0.00
7,600.0	90.00	89.70	6,091.6	-1,477.04	1,396.7	1,094.7	1,466.4	0.00	0.00	0.00
7,700.0	90.00	89.70	6,091.6	-1,477.04	1,397.2	1,194.7	1,561.9	0.00	0.00	0.00
7,800.0	90.00	89.70	6,091.6	-1,477.04	1,397.7	1,294.7	1,657.4	0.00	0.00	0.00
7,900.0	90.00	89.70	6,091.6	-1,477.04	1,398.3	1,394.7	1,752.8	0.00	0.00	0.00
8,000.0	90.00	89.70	6,091.6	-1,477.04	1,398.8	1,494.7	1,848.3	0.00	0.00	0.00
8,100.0	90.00	89.70	6,091.6	-1,477.04	1,399.3	1,594.7	1,943.7	0.00	0.00	0.00
8,200.0	90.00	89.70	6,091.6	-1,477.04	1,399.8	1,694.7	2,039.2	0.00	0.00	0.00
8,300.0	90.00	89.70	6,091.6	-1,477.04	1,400.3	1,794.7	2,134.6	0.00	0.00	0.00
8,400.0	90.00	89.70	6,091.6	-1,477.04	1,400.9	1,894.7	2,230.1	0.00	0.00	0.00
8,500.0	90.00	89.70	6,091.6	-1,477.04	1,401.4	1,994.7	2,325.5	0.00	0.00	0.00
8,600.0	90.00	89.70	6,091.6	-1,477.04	1,401.9	2,094.7	2,421.0	0.00	0.00	0.00
8,700.0	90.00	89.70	6,091.6	-1,477.04	1,402.4	2,194.7	2,516.4	0.00	0.00	0.00
8,800.0	90.00	89.70	6,091.6	-1,477.04	1,402.9	2,294.7	2,611.9	0.00	0.00	0.00
8,900.0	90.00	89.70	6,091.6	-1,477.03	1,403.4	2,394.7	2,707.4	0.00	0.00	0.00
9,000.0	90.00	89.71	6,091.6	-1,477.03	1,403.9	2,494.7	2,802.8	0.00	0.00	0.00
9,100.0	90.00	89.71	6,091.6	-1,477.03	1,404.5	2,594.7	2,898.3	0.00	0.00	0.00

Planning Report



Database:	EDM 5000.1 Single User Db	Local Co-ordinate Reference:	Well PRONGHORN C-W-28HNC
Company:	BONANZA CREEK ENERGY INC.	TVD Reference:	KB-EST @ 4614.6usft (Original Well Elev)
Project:	WELD COUNTY, COLORADO (NAD 83)	MD Reference:	KB-EST @ 4614.6usft (Original Well Elev)
Site:	SW SW SEC. 28 T5N R61W 6th P.M.	North Reference:	True
Well:	PRONGHORN C-W-28HNC	Survey Calculation Method:	Minimum Curvature
Wellbore:	ORIGINAL WELLBORE		
Design:	PROPOSAL #1		

Planned Survey

MD (usft)	Inc (°)	Azi (°)	TVD (usft)	SS (usft)	+N/-S (usft)	+E/-W (usft)	Vertical Section (usft)	Dogleg Rate (°/100usft)	Build Rate (°/100usft)	Turn Rate (°/100usft)
9,200.0	90.00	89.71	6,091.6	-1,477.03	1,405.0	2,694.7	2,993.7	0.00	0.00	0.00
9,300.0	90.00	89.71	6,091.6	-1,477.03	1,405.5	2,794.7	3,089.2	0.00	0.00	0.00
9,400.0	90.00	89.71	6,091.6	-1,477.03	1,406.0	2,894.7	3,184.6	0.00	0.00	0.00
9,500.0	90.00	89.71	6,091.6	-1,477.03	1,406.5	2,994.7	3,280.1	0.00	0.00	0.00
9,600.0	90.00	89.71	6,091.6	-1,477.02	1,407.0	3,094.7	3,375.5	0.00	0.00	0.00
9,700.0	90.00	89.71	6,091.6	-1,477.02	1,407.5	3,194.7	3,471.0	0.00	0.00	0.00
9,800.0	90.00	89.71	6,091.6	-1,477.02	1,408.1	3,294.7	3,566.4	0.00	0.00	0.00
9,900.0	90.00	89.71	6,091.6	-1,477.02	1,408.6	3,394.7	3,661.9	0.00	0.00	0.00
10,000.0	90.00	89.71	6,091.6	-1,477.02	1,409.1	3,494.7	3,757.3	0.00	0.00	0.00
10,100.0	90.00	89.71	6,091.6	-1,477.02	1,409.6	3,594.7	3,852.8	0.00	0.00	0.00
10,200.0	90.00	89.71	6,091.6	-1,477.02	1,410.1	3,694.7	3,948.2	0.00	0.00	0.00
10,300.0	90.00	89.71	6,091.6	-1,477.01	1,410.6	3,794.7	4,043.7	0.00	0.00	0.00
10,400.0	90.00	89.71	6,091.6	-1,477.01	1,411.1	3,894.7	4,139.2	0.00	0.00	0.00
10,500.0	90.00	89.71	6,091.6	-1,477.01	1,411.6	3,994.7	4,234.6	0.00	0.00	0.00
10,600.0	90.00	89.71	6,091.6	-1,477.01	1,412.1	4,094.7	4,330.1	0.00	0.00	0.00
10,700.0	90.00	89.71	6,091.6	-1,477.01	1,412.6	4,194.7	4,425.5	0.00	0.00	0.00
10,800.0	90.00	89.71	6,091.6	-1,477.00	1,413.1	4,294.7	4,521.0	0.00	0.00	0.00
10,900.0	90.00	89.71	6,091.6	-1,477.00	1,413.7	4,394.7	4,616.4	0.00	0.00	0.00
BHL - PRONGHORN C-W-28HNC										
10,952.4	90.00	89.71	6,091.6	-1,477.00	1,413.9	4,447.1	4,666.4	0.00	0.00	0.00

Plan Annotations

MD (usft)	TVD (usft)	Local Coordinates		Comment
		+N/-S (usft)	+E/-W (usft)	
1,000.0	1,000.0	0.0	0.0	START NUDGE (2°/100ft BUR)
2,149.8	2,119.2	219.6	-60.0	EOB TO 23° INC
4,670.0	4,439.1	1,169.4	-319.5	END OF TANGENT
5,819.8	5,558.3	1,389.0	-379.5	EOD TO VERTICAL
5,849.8	5,588.3	1,389.0	-379.5	KOP (12°/100ft BUR)
6,474.8	6,049.5	1,390.9	-25.6	START OF TANGENT
6,574.8	6,075.4	1,391.4	71.0	END OF TANGENT
6,699.8	6,091.6	1,392.0	194.5	7" ICP - PRONGHORN C-W-28HNC
10,952.4	6,091.6	1,413.9	4,447.1	BHL - PRONGHORN C-W-28HNC