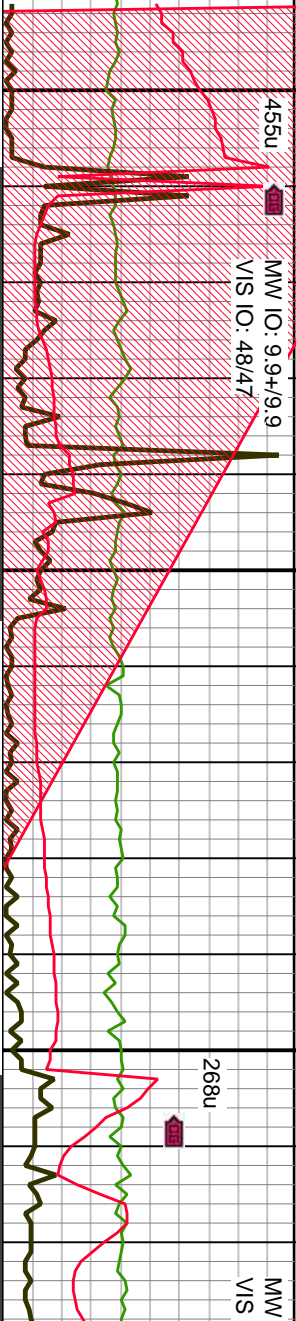


ROP
TG
ROF
GAMMA

Extraction O&G
Diamond Valley East #12
Veld County, Colorado
Spud Date: 10-29-14
Surface Casing @ 772'
-man Logging / Geosteering Began: 11-1-14
100 units = 1% Methane



Slide/Rotate
Depth Labels



Total Gas & Chromatograph

GAS
C1
C2
C3
C4



Well Bore
TVD

TVD (ft)

MD: 6,487'
TVD: 6,328.26'
Inclination: 10.98 °
Azimuth: 345.99 °
VS: 259.68'

MD: 6,487'
TVD: 6,328.26'
Inclination: 10.98 °
Azimuth: 345.99 °
VS: 259.68'

6440-6500 SLTY SS: pred gy- med gy brn, sme offwh- trnsl thn intbds, pred frm- hd, cons clus thru, blk- sb pty, pred f- vf gr, occ u f gr, sl sb ang- sb rd gms, ss intbdd w abt med gy slst- sh, ply- mod srt, arg, w cntd, sme pyr, sl- mod calc, abt lith frags

VS @ 6440'

6500-6560: SLTST: pred gy- gy brn, occ lt gy, tr offwh- trns, pred frm- sl hd, sb blk- pty, pred vf- f gr, sme sdy clus and intbds, scat dk brn shy intbds, ply- mod srt, arg- v slty, w cntd, sl pyrc, abt lith frags

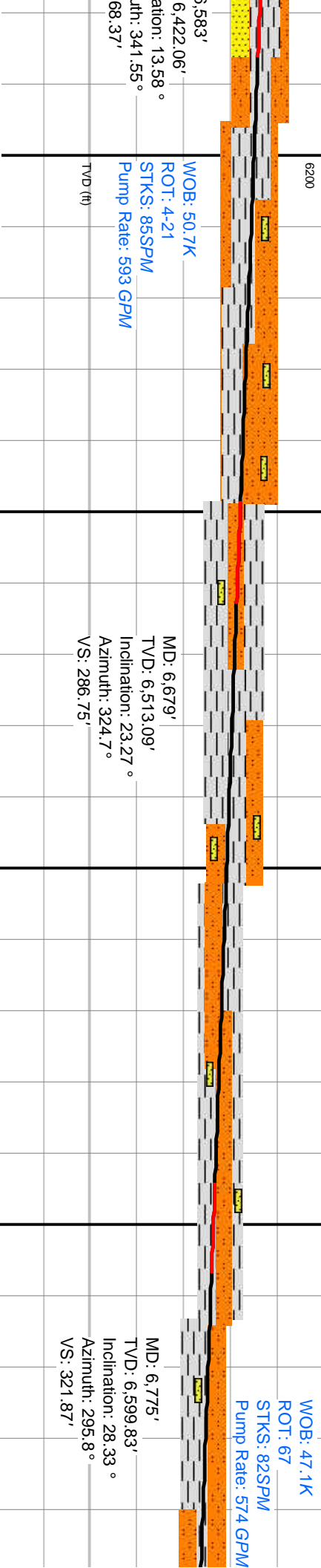
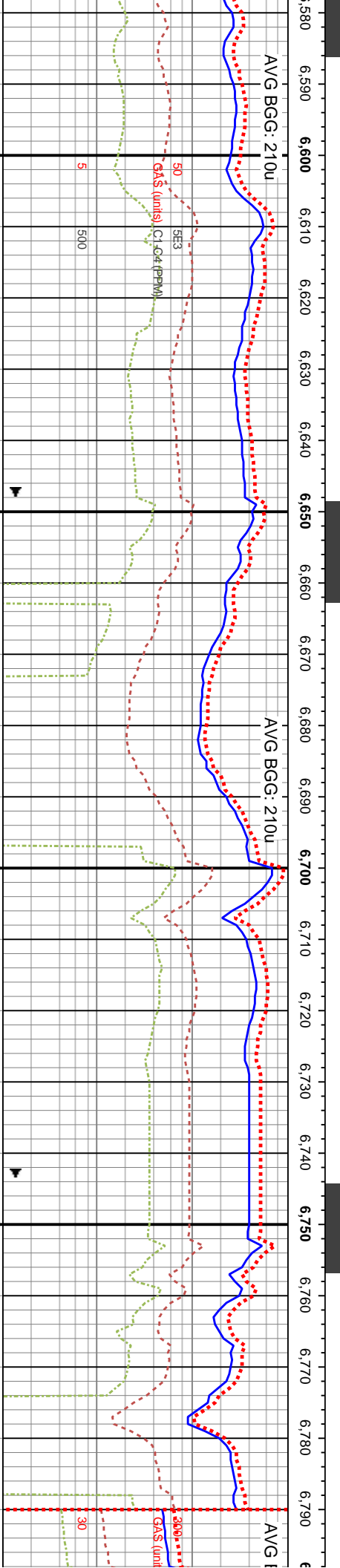
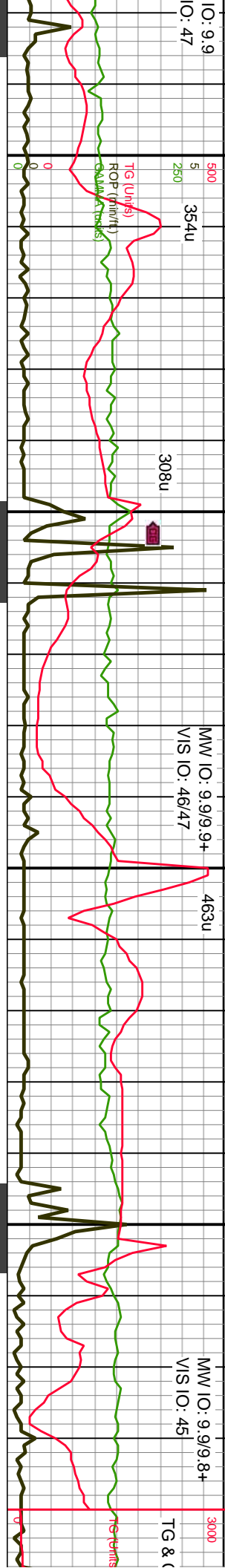
6560-6620 SLTY SS: pred gy- med gy brn, sme offwh- trns, pred frm- sl hd, sb blk- pty, pred vf- f gr, sme sdy clus and intbds, scat dk brn shy intbds, mod srt, arg- v slty, w cntd, sl pyrc, abt lith frags

Oil Show

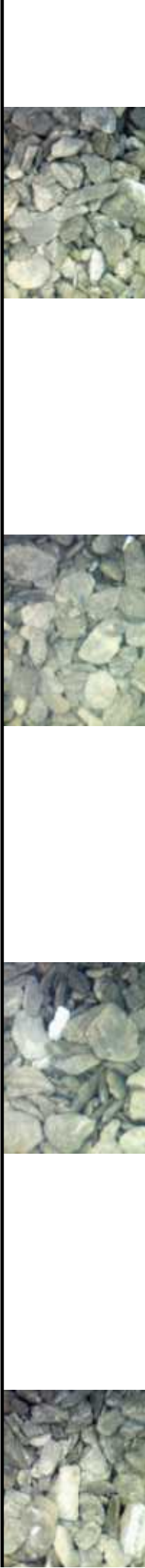
Oil Show

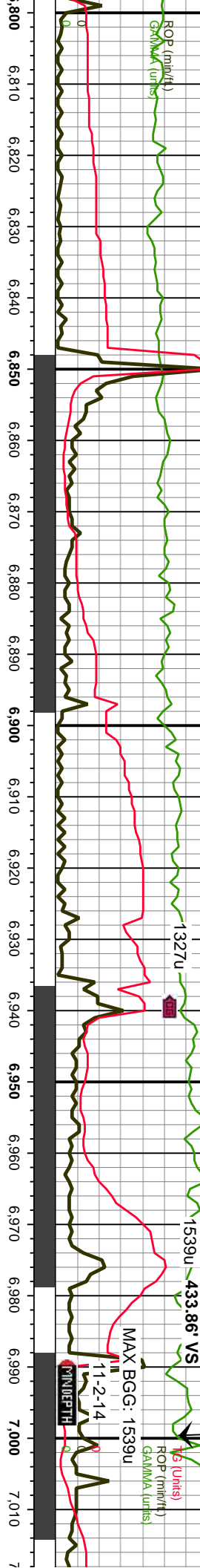
Images





6620-6680 SLTST/SH: pred med gy- gy brn, sme lt gy brn, occ offwh- tmnl cls, pred frm- sl hd, sb biky- pily, sme sb ang, pred vf gr, rr offwh- crm sdy intbds, mod- w srl, arg- v slty, v w cmtd, sl pyrc, v p gn yel cut, p gn resdl ring	6680-6740 SLTST/SH: pred med gy, sme lt- med gy brn, occ offwh- tmnl cls, pred frm- hd, sb biky- pily, ip sb ang, pred vf- f gr, occ offwh- crm sdy intbds, mod- w srl, arg- slty, v w cmtd, sl pyrc, v p gn yel cut, p gn resdl ring	6740-6800 SLTST/SH: pred med gy, sme lt- med gy brn, occ offwh- tmnl cls, pred frm- hd, sb biky- pily, ip sb ang, pred vf- f gr, occ offwh- crm sdy intbds, mod- w srl, arg- slty, v w cmtd, sl pyrc, v p gn yel cut, p gn resdl ring
--	---	---



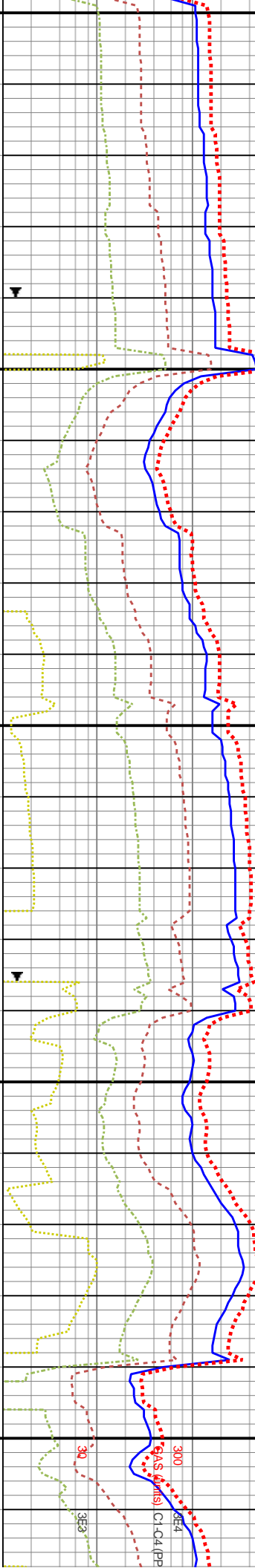


39GG: 320u

AVG BGC: 990u

AVG BGC: 990u

AVG E



MD: 6,871'

TVD: 6,683.95'

Inclination: 29.35 °

Azimuth: 287.98 °

VS: 366.88'

MD: 6,967'

TVD: 6,766.3'

Inclination: 32.48 °

Azimuth: 288.43 °

VS: 415.52'



6800-6860 SLTST/SH: pred med gy, sme lt- med gy brn, occ dk gy, pred frm- hd, pily- sb blkly, ip sb ang, pred vt gr, occ offwhit- crm sdy intbds, tr offwhit- trnsl sdy clus, mod- w srt, arg- silty, v w cmtld, sl pyrc, v p gn yel cut, p gn resdl ring

6860-6920 SLTST/SH: pred med gy, sme lt- med gy brn, occ dk gy, pred frm- hd, pily- sb blkly, ip sb ang, pred vt gr, occ offwhit- crm sdy intbds, tr offwhit- trnsl sdy clus, mod- w srt, arg- silty, v w cmtld, sl pyrc, v p gn yel cut, p gn resdl ring

6920-6980 SH: pred med- dk gy, sme lt gy, pred mod frm- sl hd, sb ang- pily, split lp, vt gr, w srt, v silty- arg, v w cmtld, mod pyrc, rr pyr nod, scat pyrc bent, p dull gn yel cut, p yel brn resdl ring

6980-7040 SH: pred med- dk gy, pred mod frm- sl hd, ang- pily, oc srt, v silty- sl arg, v w cmtld, v sl c pyr nod, scat pyrc bent, p dull gn resdl ring



