

VS: 176.99'

WOB: 38klbs
RPM: 67
SPM: 182
GPM: 638

ROP (min/ft.) 2
GAMMA (units) 140

MD: 5,243'
TVD: 5,118.58'
Inclination: 13.54 °
Azimuth: 359.46 °
VS: 180.67'

MD: 5,339'
TVD: 5,211.84'
Inclination: 13.91 °
Azimuth: 358.32 °
VS: 184.57'

GAS (units)
C1-C4 (PPM)
61u

58u

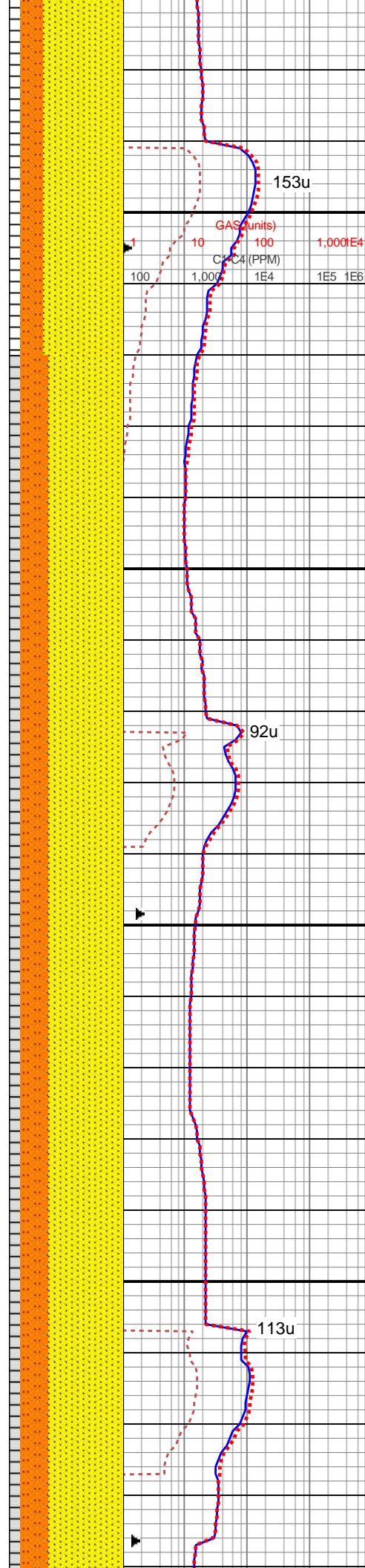
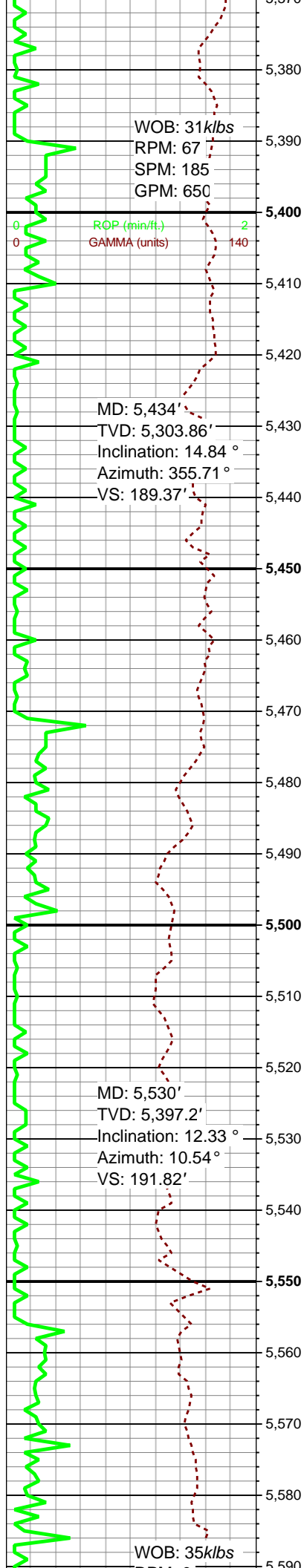
5120-5180 SLTY SS:
pred lt- med gy, sme lt
tan, occ crm- trnsl wh,
pred u f- l med grn, sme
vf grnd, frm- hd, cons
clus, pred sb ang- sb rd,
mod srt, arg- slty, w cmt, d,
sil- cal cmt, calc, v sl pyrc,
abnt lith frags, tr glauc

5180-5240 SLTY SS:
pred med gy, occ offwht-
trnsl clus, pred u f grnd,
ip med grn, sme vf grnd,
frm- hd, pred cons clus,
pred sb ang- sb rd, mod
srt, arg- slty, w cmt, d, sil-
cal cmt, calc, v sl pyrc,
abnt lith frags, rr glauc

5240-5300 SLTY SS:
pred med gy, occ offwht-
trnsl clus, pred u f grnd,
ip med grn, sme vf grnd,
frm- hd, pred cons clus,
pred sb ang- sb rd, mod
srt, arg- slty, w cmt, d, sil-
cal cmt, calc, v sl pyrc,
abnt lith frags, rr glauc

5300-5360 SLTY SS:
pred med gy, occ offwht-
trnsl clus, pred u f grnd,
ip med grn, sme vf grnd,
frm- hd, pred cons clus,
pred sb ang- sb rd, mod
srt, arg- slty, w cmt, d, sil-
cal cmt, calc, v sl pyrc,
abnt lith frags, rr glauc





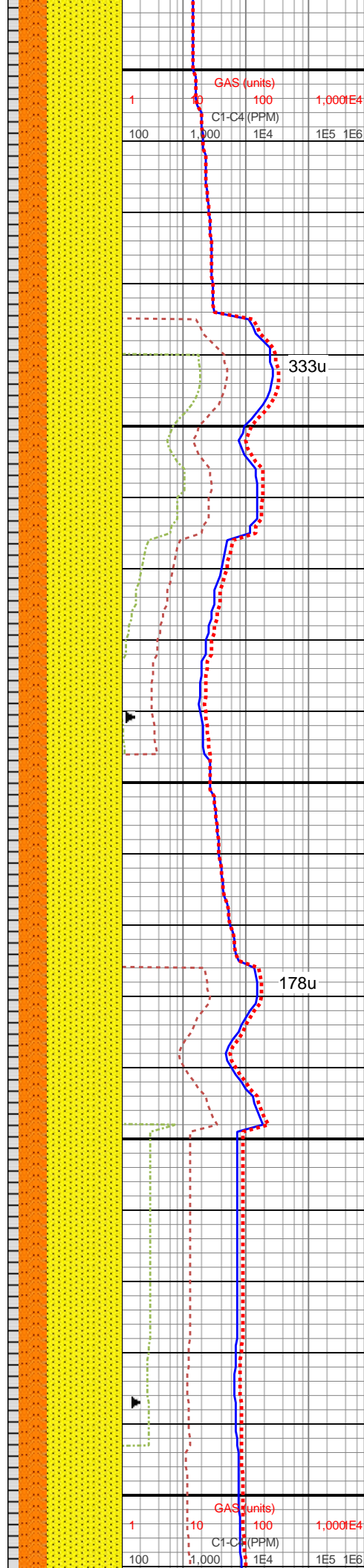
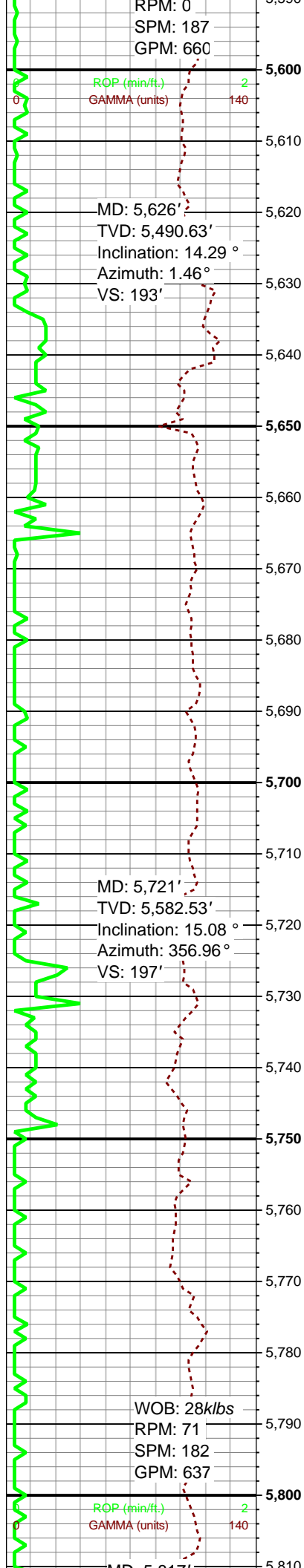
5360-5420 SLTY SS:
pred med gy, occ offwht-
trnsI clus, pred u f grnd,
ip med grn, sme vf grnd,
frm- hd, pred cons clus,
pred sb ang- sb rd, mod
srt, arg- slty, w cmt, sil-
cal cmt, calc, v sl pyrc,
abnt lith frags, rr glauc

5420-5480 SLTY SS:
pred med gy, sme offwht-
trnsI clus, pred u f grnd,
ip med grn, sme vf grnd,
frm- hd, pred cons clus,
pred sb ang- sb rd, mod
srt, arg- slty, w cmt, sil-
cal cmt, calc, v sl pyrc,
abnt lith frags, rr glauc, rr
bent

5480-5540 SLTY SS:
pred med gy, sme offwht-
trnsI clus, pred u f grnd,
ip med grn, sme vf grnd,
frm- hd, pred cons clus,
pred sb ang- sb rd, mod
srt, arg- slty, w cmt, sil-
cal cmt, calc, v sl pyrc,
abnt lith frags, rr glauc

5540-5600 SLTY SS:
pred med gy, sme offwht-
trnsI clus, pred u f grnd,
ip med grn, sme vf grnd,
frm- hd, pred cons clus,
pred sb ang- sb rd, mod





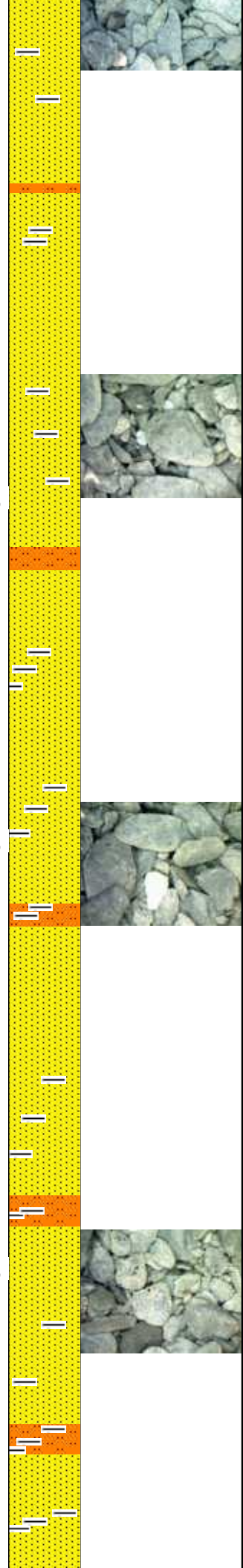
srt, arg- slty, w cmt, sil- cal cmt, calc, v sl pyrc, abnt lith frags, rr glauc

5600-5660 SLTY SS:
pred med gy, tr offwht- trns l clus, pred sub blk y, ip plty, pred u f grnd, ip med grn, sme vf grnd, frm- hd, pred cons clus, pred sb ang- sb rd grs, mod srt, arg- slty, w cmt, sil- cal cmt, tr calc, v sl pyrc, abnt lith frags, rr bent

5660-5720 SLTY SS:
pred med gy, tr offwht- trns l clus, pred sub blk y, ip plty, pred u f grnd, ip med grn, sme vf grnd, frm- hd, pred cons clus, pred sb ang- sb rd grs, mod srt, arg- slty, w cmt, sil- cal cmt, tr calc, v sl pyrc, abnt lith frags, rr bent

5720-5780 SLTY SS:
pred med gy, tr offwht- trns l clus, pred sub blk y, ip plty, pred u f grnd, ip med grn, sme vf grnd, frm- hd, pred cons clus, pred sb ang- sb rd grs, mod srt, arg- slty, w cmt, sil- cal cmt, tr calc, v sl pyrc, abnt lith frags, rr bent

5780-5840 SLTY SS:
pred med gy, tr offwht-



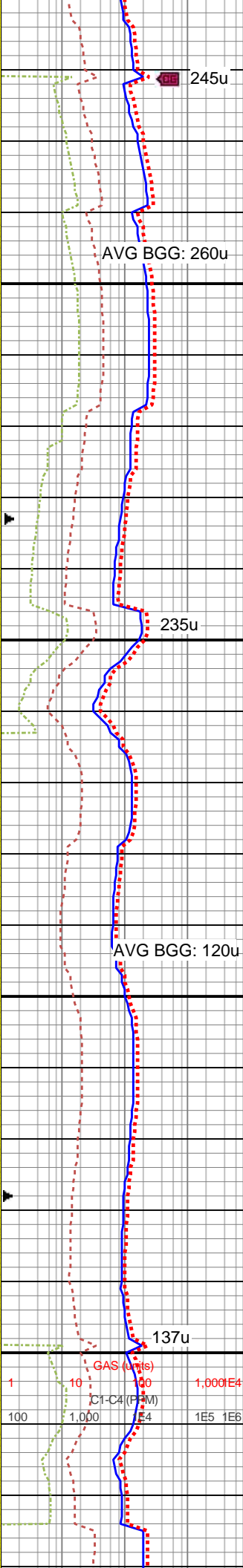
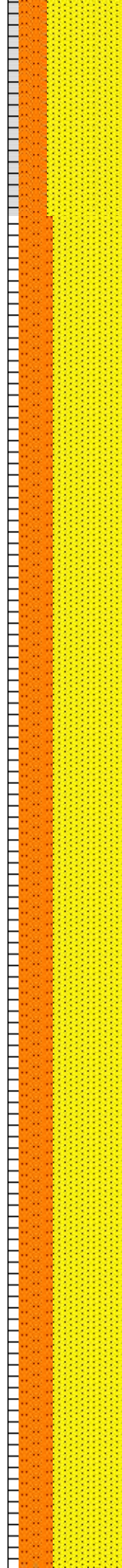
MD: 5,817'
TVD: 5,676.01'
Inclination: 11.1 °
Azimuth: 352.9 °
VS: 202.07'

MD: 5,913'
TVD: 5,769.91'
Inclination: 12.95 °
Azimuth: 347.46 °
VS: 208.49'

WOB: 27klbs
RPM: 70
SPM: 183
GPM: 645

MD: 6,009'
TVD: 5,863.1'
Inclination: 14.89 °
Azimuth: 336.99 °
VS: 218.89'

5,810
5,820
5,830
5,840
5,850
5,860
5,870
5,880
5,890
5,900
5,910
5,920
5,930
5,940
5,950
5,960
5,970
5,980
5,990
6,000
6,010
6,020
6,030



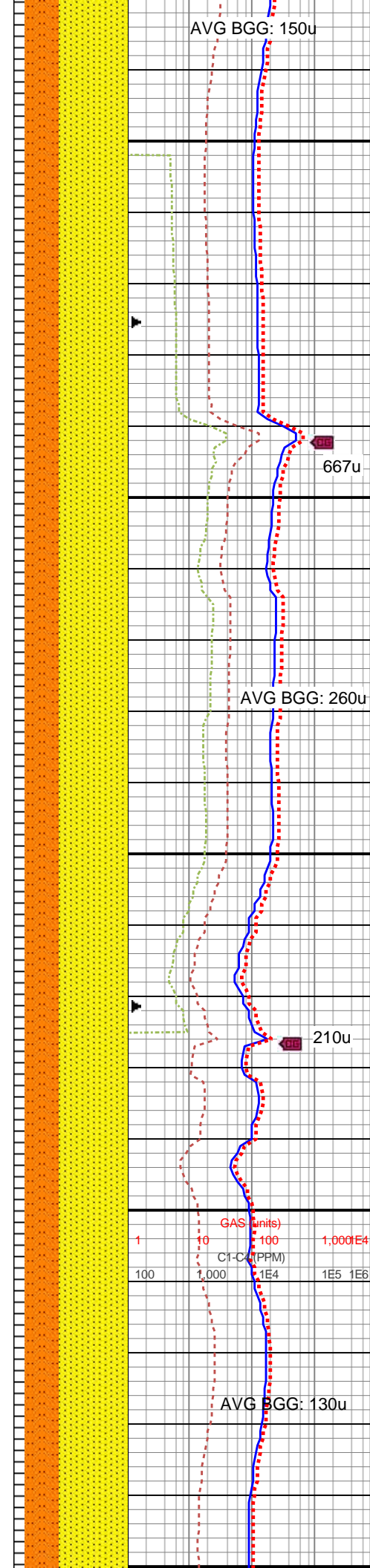
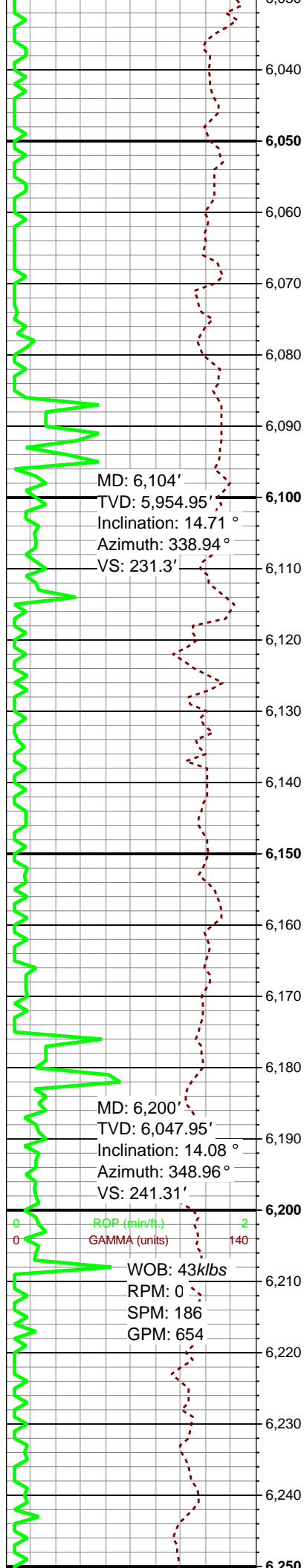
pred med gy, tr onwht-
trns l clus, pred sub blkly,
ip plty, pred u f grnd, ip
med grn, sme vf grnd,
frm- hd, pred cons clus,
pred sb ang- sb rd grs,
mod srt, arg- slty, w cmtd,
sil- cal cmt, tr calc, v sl
pyrc, abnt lith frags, rr
bent

5840-5900 SLTY SS:
pred gy- med gy, sme sl
brn, sme offwht- trns l cls,
pred frm- hd, cons thru,
sb blkly- sb plty, pred f gr,
sme u f grnd, occ l med
gr, sb ang- sb rd grns, ss
intbdd w abnt med gy
sltst- sh, ply- mod srt,
arg, w cmtd, sme pyr, sl-
mod calc, abnt lith frags

5900-5960 SLTY SS:
pred gy- med gy, sme sl
brn, sme offwht- trns l cls,
pred frm- hd, cons thru,
sb blkly- sb plty, pred f gr,
sme u f grnd, occ l med
gr, sb ang- sb rd grns, ss
intbdd w abnt med gy
sltst- sh, ply- mod srt,
arg, w cmtd, sme pyr, sl-
mod calc, abnt lith frags

5960-6020 SLTY SS:
pred gy- med gy, sme sl
brn, sme offwht- trns l cls,
pred frm- hd, cons thru,
sb blkly- sb plty, pred f gr,
sme u f grnd, occ l med
gr, sb ang- sb rd grns, ss
intbdd w abnt med gy
sltst- sh, ply- mod srt,
arg, w cmtd, sme pyr, sl-
mod calc, abnt lith frags





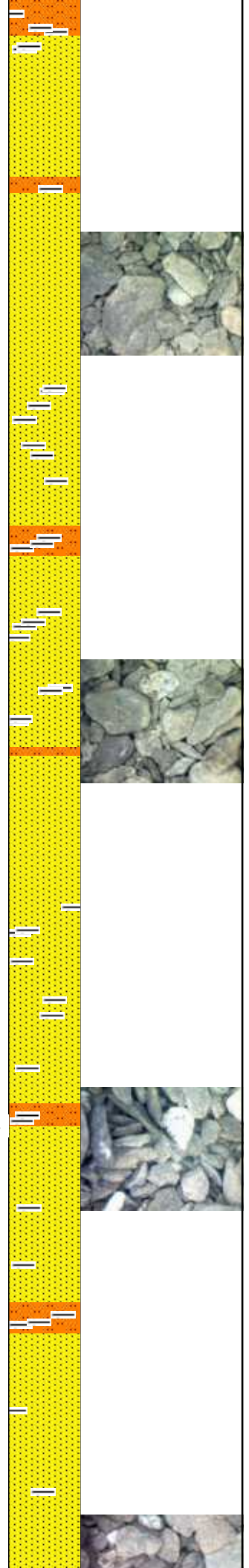
6020-6080 SLTY SS:
pred gy- med gy, sme sl
brn, sme offwht- trnsl cls,
pred frm- hd, cons thru,
sb blk- sb plty, pred f gr,
sme u f grnd, occ l med
gr, sb ang- sb rd grns, ss
intbdd w abnt med gy
sltst- sh, ply- mod srt,
arg, w cmt, sme pyr, sl-
mod calc, abnt lith frags

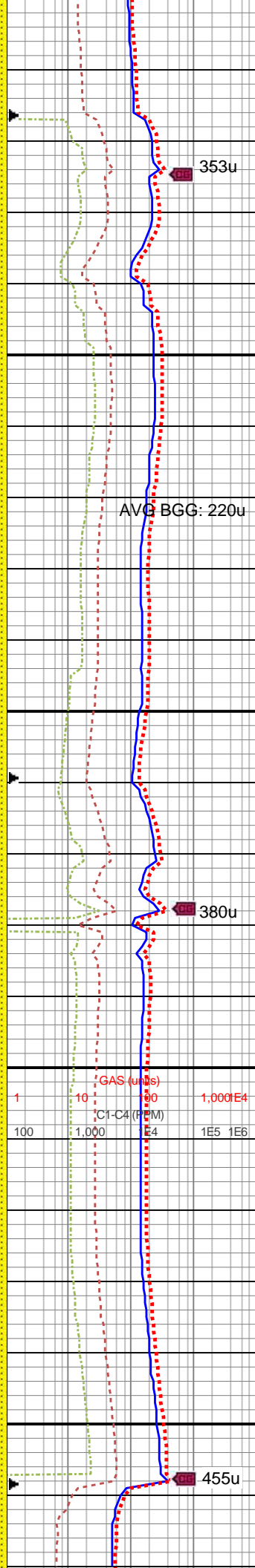
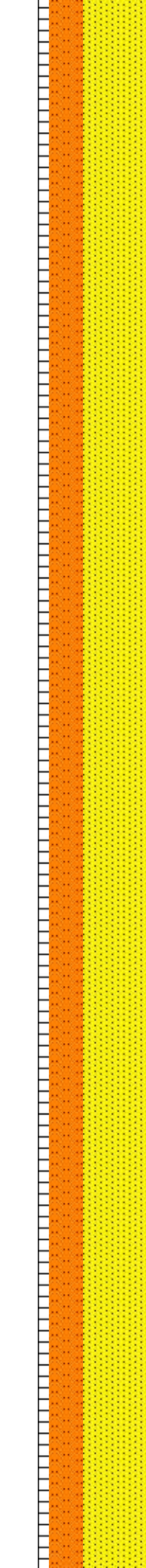
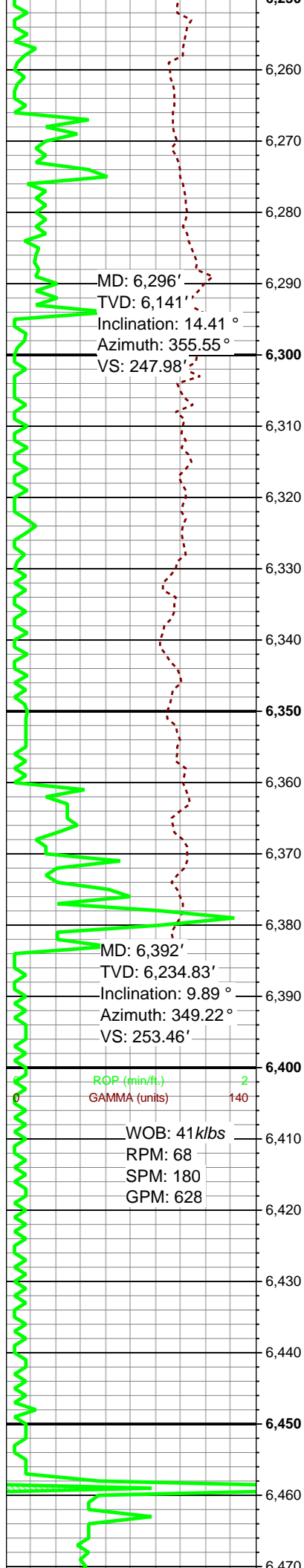
6080-6140 SLTY SS:
pred gy- med gy, sl brn,
sme offwht- trnsl cls,
pred frm- hd, cons thru,
sb blk- sb plty, pred f gr,
sme u f grnd, occ l med
gr, sb ang- sb rd grns, ss
intbdd w abnt med gy
sltst- sh, ply- mod srt,
arg, w cmt, sme pyr, sl-
mod calc, abnt lith frags

MW IO: 9.3+/9.4+
VIS IO: 44/41

6140-6200 SLTY SS:
pred gy- med gy, sme
offwht- trnsl thn bds, pred
frm- hd, cons clus thru,
sb blk- sb plty, pred f gr,
occ u f- l med gr, sb ang-
sb rd grns, ss intbdd w
abnt med gy sltst- sh, ply-
mod srt, arg, w cmt,
sme pyr, sl- mod calc,
abnt lith frags

6200-6260 SLTY SS:
pred gy- med gy, sme
offwht- trnsl thn bds, pred
frm- hd, cons clus thru,
sb blk- sb plty, pred f gr





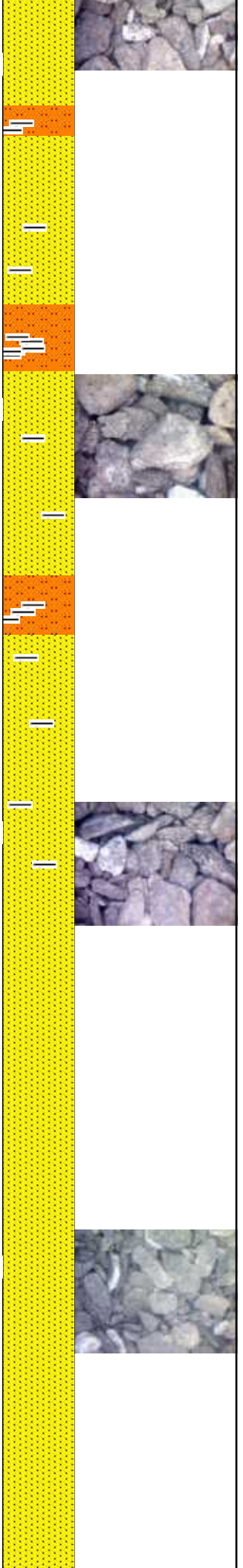
occ u f- l med gr, sb ang-
sb rd grns, ss intbdd w
abnt med gy sltst- sh, ply-
mod srt, arg, w cmtd,
sme pyr, sl- mod calc,
abnt lith frags

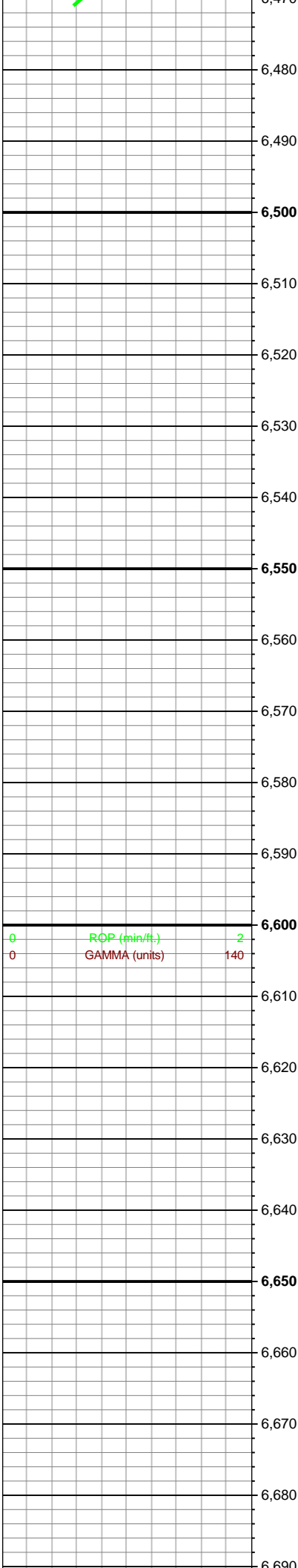
6260-6320 SLTY SS:
pred gy- med gy, sme
offwht- trnsl thn bds, pred
frm- hd, cons clus thru,
sb blk- sb plty, pred f gr,
occ u f- l med gr, sb ang-
sb rd grns, ss intbdd w
abnt med gy sltst- sh, ply-
mod srt, arg, w cmtd,
sme pyr, sl- mod calc,
abnt lith frags

6320-6380 SLTY SS:
pred gy- med gy, sme
offwht- trnsl thn bds, pred
frm- hd, cons clus thru,
sb blk- sb plty, pred f gr,
occ u f- l med gr, sb ang-
sb rd grns, ss intbdd w
abnt med gy sltst- sh, ply-
mod srt, arg, w cmtd,
sme pyr, sl- mod calc,
abnt lith frags

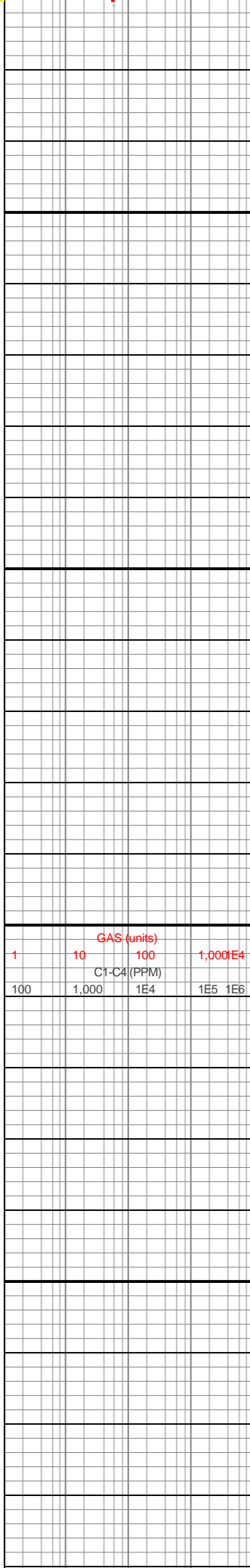
MW IO: 9.8+
VIS IO: 45/48

6380-6440 SLTY SS:
pred gy- med gy, sme
offwht- trnsl thn bds, pred
frm- hd, cons clus thru,
sb blk- sb plty, pred f gr,
occ u f- l med gr, sb ang-
sb rd grns, ss intbdd w
abnt med gy sltst- sh, ply-
mod srt, arg, w cmtd,
sme pyr, sl- mod calc,
abnt lith frags





ROP (min/ft.) 2
GAMMA (units) 140



GAS (units)
C1-C4 (PPM)
1 10 100 1,000
100 1,000 1E4 1E5 1E6

Log Continued in
Horizontal Format



