

BONANZA CREEK ENERGY INC.

WELD COUNTY, COLORADO (NAD 83)

NW NE SEC. 29 T5N R62W 6th P.M.

ANTELOPE P41-T44-29HC

JOB #: 2009-371

28 November, 2014

Survey: FINAL SURVEYS





Project: WELD COUNTY, COLORADO (NAD 83)
 Site: NW NE SEC. 29 T5N R62W 6th P.M.
 Well: ANTELOPE P41-T44-29HC
 Wellbore: JOB #: 2009-371
 Design: FINAL SURVEYS

ANNOTATIONS

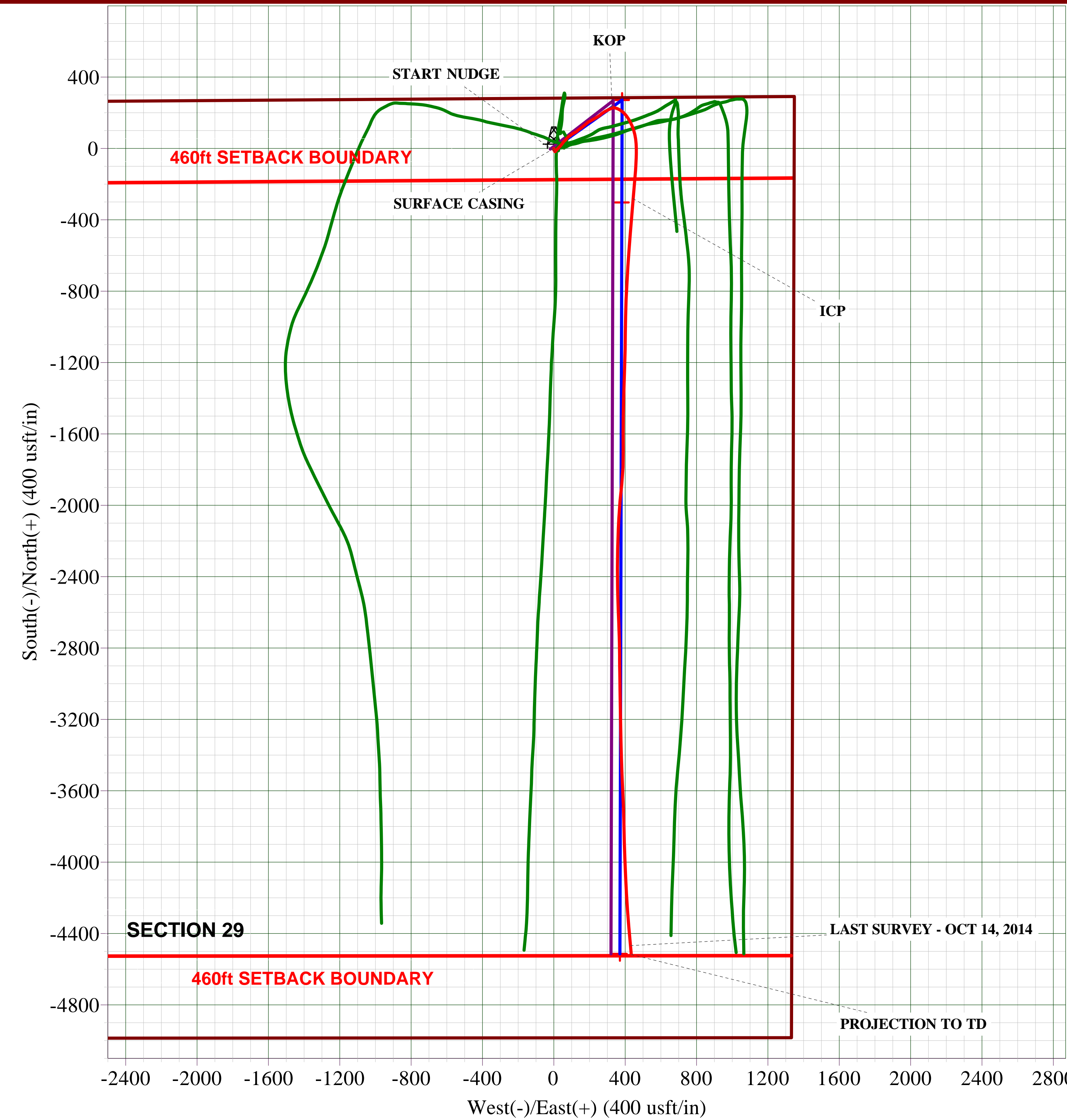
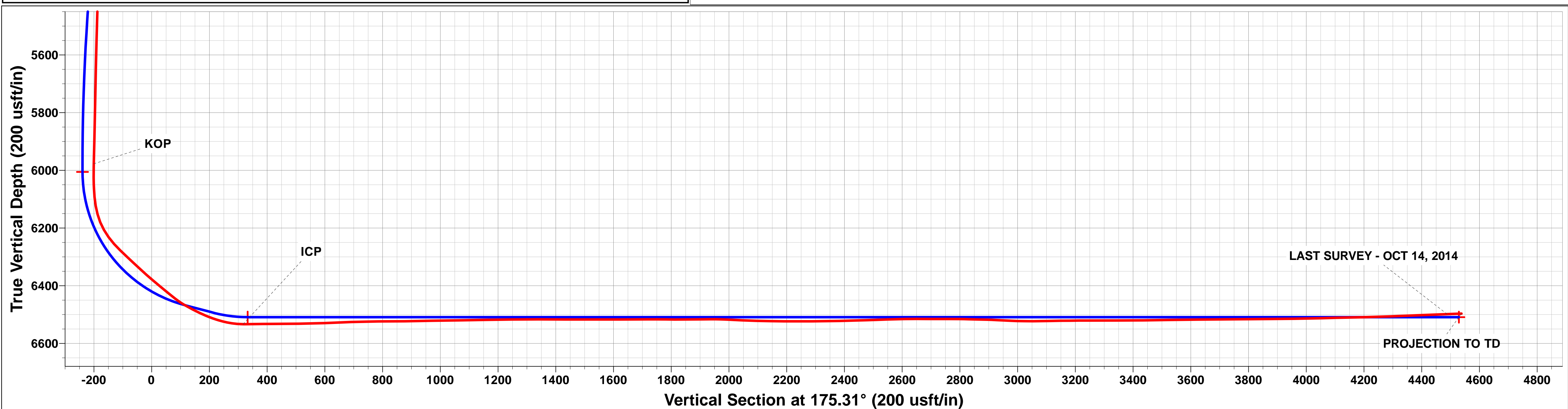
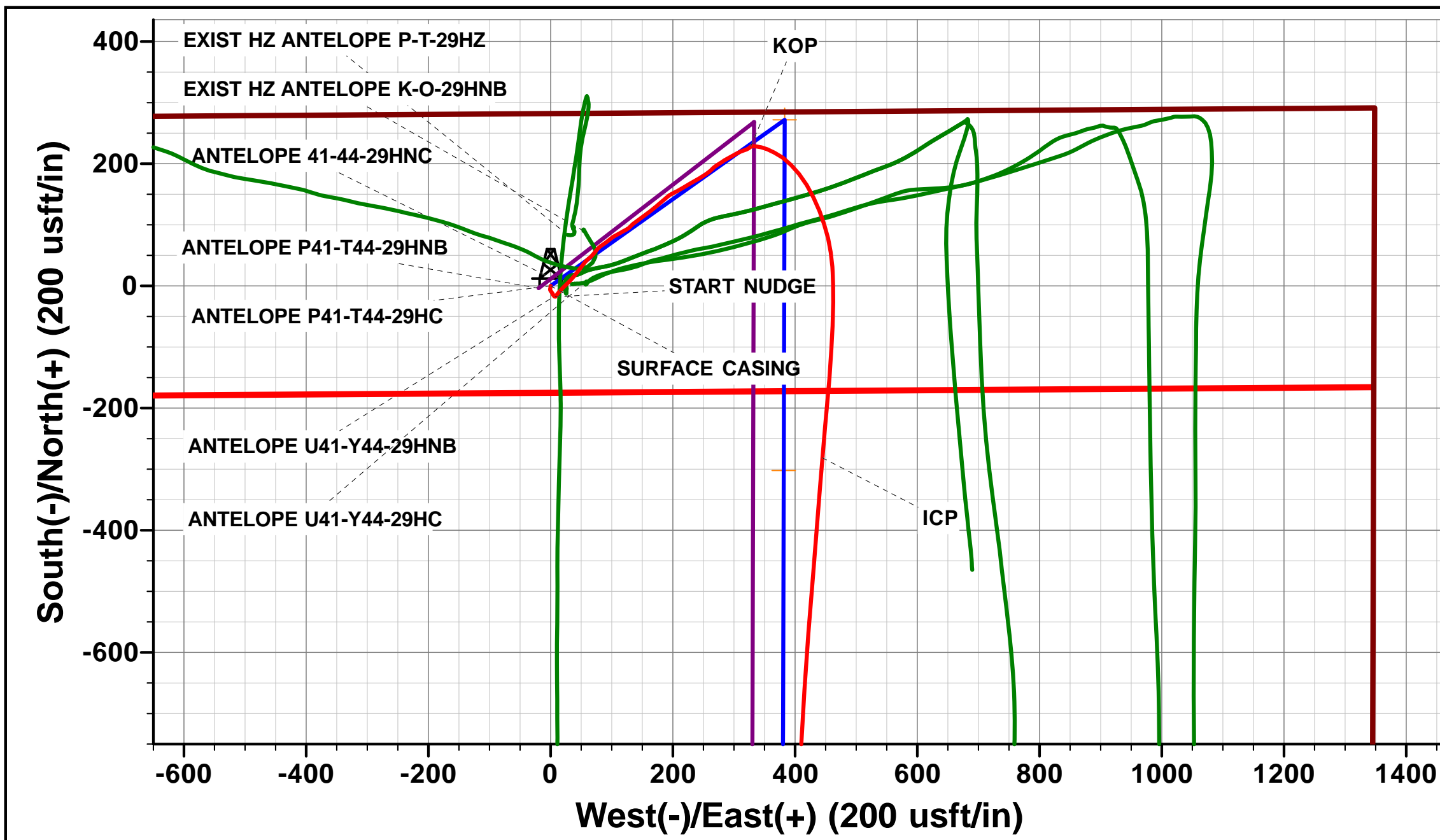
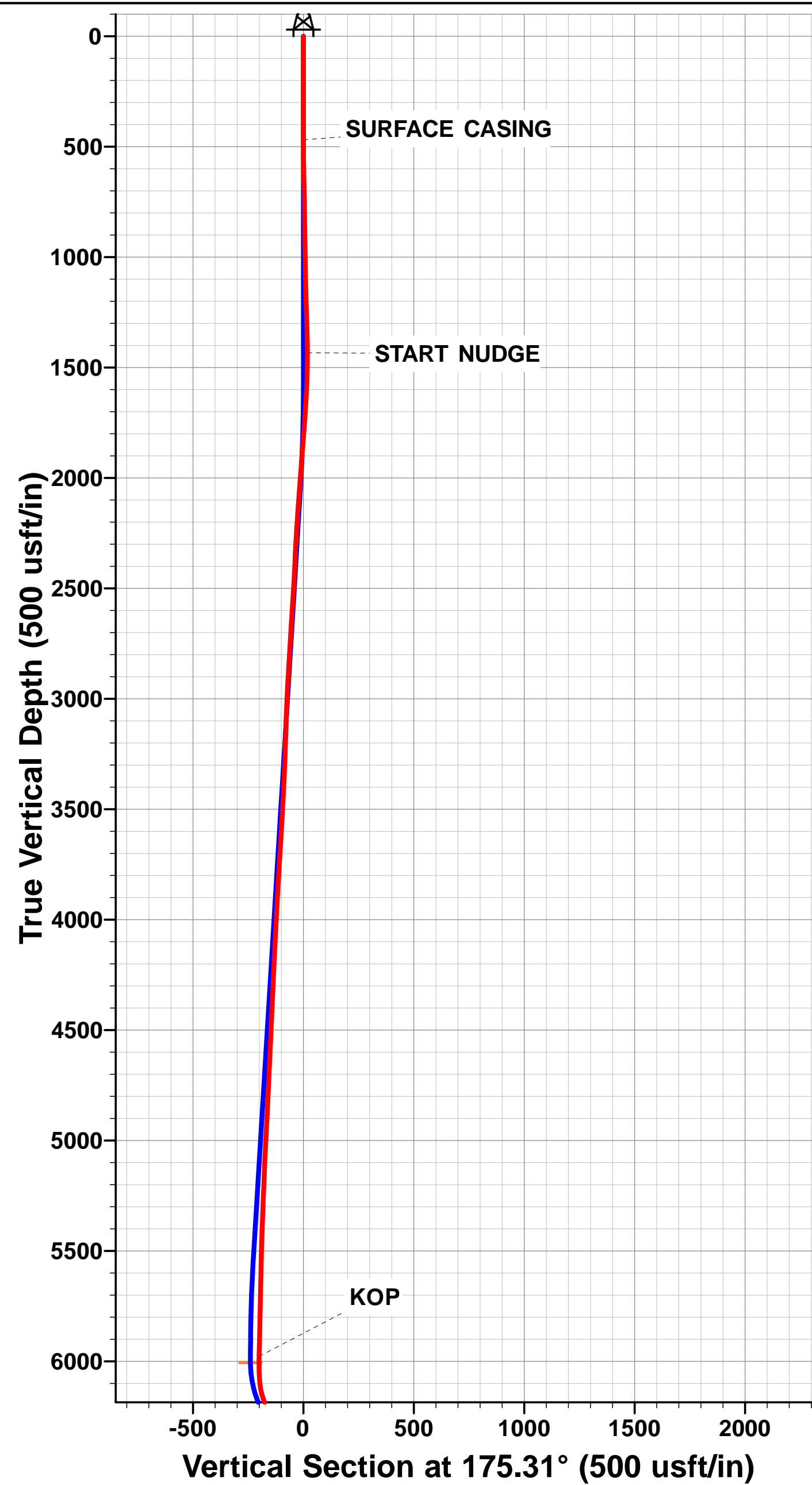
TVD	MD	Inc	Azi	+N/-S	+E/-W	V Sect	Dep	Annotation
470.0	470.0	0.00	0.00	0.0	0.0	0.0	0.0	SURFACE CASING
1433.8	1434.0	1.02	99.17	-17.9	7.2	18.4	20.8	START NUDGE
5977.6	5997.0	2.56	56.63	228.1	327.6	-200.5	430.3	KOP
6533.4	6852.0	88.96	184.49	-281.2	444.8	316.7	1001.8	ICP
6498.7	11044.0	92.20	174.80	-4467.8	429.7	4488.0	5192.9	LAST SURVEY - OCT 14, 2014
6496.8	11094.0	92.00	174.80	-4517.6	434.2	4538.0	5242.8	PROJECTION TO TD

PROPOSED LOCAL COORDINATES:

SHL: 283ft FNL & 1348ft FEL Sec 29
 7" ICP *NEW*: 589.1ft FNL & 965ft FEL Sec 29
 BHL: 470ft FNL & 965ft FEL Sec 29

WELLBORE TARGET DETAILS (LAT/LONG)

Name	TVD	+N/-S	+E/-W	Latitude	Longitude
KOP - ANTELOPE P41-T44-29HC (P4)	6005.7	271.9	383.1	40.377856	-104.341655
7" ICP *NEW* - ANTELOPE P41-T44-29HC (P4)	6509.0	-302.2	381.6	40.376280	-104.341660
BHL - ANTELOPE P41-T44-29HC (P4)	6509.0	-4513.8	370.6	40.364720	-104.341700



Survey Report



Company:	BONANZA CREEK ENERGY INC.	Local Co-ordinate Reference:	Well ANTELOPE P41-T44-29HC
Project:	WELD COUNTY, COLORADO (NAD 83)	TVD Reference:	KB @ 4657.0usft (CADE 21)
Site:	NW NE SEC. 29 T5N R62W 6th P.M.	MD Reference:	KB @ 4657.0usft (CADE 21)
Well:	ANTELOPE P41-T44-29HC	North Reference:	True
Wellbore:	JOB #: 2009-371	Survey Calculation Method:	Minimum Curvature
Design:	FINAL SURVEYS	Database:	EDM 5000.1 Single User Db

Project WELD COUNTY, COLORADO (NAD 83)			
Map System:	US State Plane 1983	System Datum:	Mean Sea Level
Geo Datum:	North American Datum 1983		
Map Zone:	Colorado Northern Zone		Using geodetic scale factor

Site NW NE SEC. 29 T5N R62W 6th P.M.			
Site Position:		Northing:	1,382,324.45 usft
From:	Lat/Long	Easting:	3,322,327.78 usft
Position Uncertainty:	0.0 usft	Slot Radius:	1.10000ft
		Latitude:	40.377110
		Longitude:	-104.343030
		Grid Convergence:	0.75 °

Well ANTELOPE P41-T44-29HC			
Well Position	+N/-S	0.0 usft	Northing: 1,382,324.45 usft
	+E/-W	0.0 usft	Easting: 3,322,327.78 usft
Position Uncertainty		0.0 usft	Wellhead Elevation: usft
			Latitude: 40.377110
			Longitude: -104.343030
			Ground Level: 4,640.0 usft

Wellbore JOB #: 2009-371					
Magnetics	Model Name	Sample Date	Declination (°)	Dip Angle (°)	Field Strength (nT)
	IGRF2010	07/08/2014	8.21	66.99	52,833

Design FINAL SURVEYS				
Audit Notes:				
Version:	1.0	Phase:	ACTUAL	Tie On Depth: 0.0
Vertical Section:	Depth From (TVD) (usft)	+N/-S (usft)	+E/-W (usft)	Direction (°)
	0.0	0.0	0.0	175.31

Survey Program		Date 28/11/2014			
From (usft)	To (usft)	Survey (Wellbore)	Tool Name	Description	
470.0	11,094.0	FINAL SURVEYS (JOB #: 2009-371)	MWD	MWD - Standard	

Measured Depth (usft)	Inclination (°)	Azimuth (°)	Vertical Depth (usft)	Subsea Depth (usft)	+N/-S (usft)	+E/-W (usft)	Vertical Section (usft)	Dogleg Rate (°/100usft)	Build Rate (°/100usft)	Turn Rate (°/100usft)
0.0	0.00	0.00	0.0	4,657.0	0.0	0.0	0.0	0.00	0.00	0.00
SURFACE CASING										
470.0	0.00	0.00	470.0	4,187.0	0.0	0.0	0.0	0.00	0.00	0.00
554.0	1.00	181.50	554.0	4,103.0	-0.7	0.0	0.7	1.19	1.19	0.00
647.0	1.00	190.10	647.0	4,010.0	-2.3	-0.2	2.3	0.16	0.00	9.25
740.0	1.20	192.20	740.0	3,917.0	-4.1	-0.5	4.0	0.22	0.22	2.26
834.0	0.80	176.50	834.0	3,823.0	-5.7	-0.7	5.6	0.51	-0.43	-16.70
926.0	0.80	157.10	925.9	3,731.1	-6.9	-0.4	6.9	0.29	0.00	-21.09
1,019.0	1.20	148.00	1,018.9	3,638.1	-8.4	0.4	8.4	0.46	0.43	-9.78
1,112.0	1.50	141.50	1,111.9	3,545.1	-10.1	1.6	10.2	0.36	0.32	-6.99
1,204.0	1.70	150.90	1,203.9	3,453.1	-12.3	3.0	12.5	0.36	0.22	10.22
1,297.0	1.90	148.80	1,296.8	3,360.2	-14.8	4.5	15.1	0.23	0.22	-2.26
1,390.0	1.90	139.70	1,389.8	3,267.2	-17.3	6.3	17.8	0.32	0.00	-9.78

Survey Report



Company:	BONANZA CREEK ENERGY INC.	Local Co-ordinate Reference:	Well ANTELOPE P41-T44-29HC
Project:	WELD COUNTY, COLORADO (NAD)	TVD Reference:	KB @ 4657.0usft (CADE 21)
Site:	NW NE SEC. 29 T5N R62W 6th P.M.	MD Reference:	KB @ 4657.0usft (CADE 21)
Well:	ANTELOPE P41-T44-29HC	North Reference:	True
Wellbore:	JOB #: 2009-371	Survey Calculation Method:	Minimum Curvature
Design:	FINAL SURVEYS	Database:	EDM 5000.1 Single User Db

Survey

Measured Depth (usft)	Inclination (°)	Azimuth (°)	Vertical Depth (usft)	Subsea Depth (usft)	+N/-S (usft)	+E/-W (usft)	Vertical Section (usft)	Dogleg Rate (°/100usft)	Build Rate (°/100usft)	Turn Rate (°/100usft)
START NUDGE										
1,434.0	1.02	99.17	1,433.8	3,223.2	-17.9	7.2	18.4	2.97	-2.01	-92.11
1,484.0	1.50	29.90	1,483.7	3,173.3	-17.4	7.9	18.0	2.97	0.97	-138.54
1,577.0	3.40	40.00	1,576.7	3,080.3	-14.3	10.3	15.0	2.09	2.04	10.86
1,669.0	4.30	37.90	1,668.4	2,988.6	-9.4	14.2	10.6	0.99	0.98	-2.28
1,764.0	6.90	47.10	1,763.0	2,894.0	-2.7	20.6	4.4	2.89	2.74	9.68
1,860.0	6.70	43.70	1,858.3	2,798.7	5.2	28.6	-2.9	0.47	-0.21	-3.54
1,956.0	6.20	42.10	1,953.7	2,703.3	13.1	36.0	-10.1	0.55	-0.52	-1.67
2,050.0	6.00	37.30	2,047.2	2,609.8	20.8	42.4	-17.3	0.58	-0.21	-5.11
2,146.0	5.40	39.00	2,142.7	2,514.3	28.3	48.3	-24.3	0.65	-0.62	1.77
2,241.0	5.10	33.50	2,237.3	2,419.7	35.3	53.4	-30.8	0.62	-0.32	-5.79
2,337.0	4.40	48.50	2,333.0	2,324.0	41.3	58.5	-36.4	1.48	-0.73	15.62
2,431.0	4.10	49.70	2,426.7	2,230.3	45.9	63.8	-40.5	0.33	-0.32	1.28
2,527.0	5.30	40.40	2,522.4	2,134.6	51.5	69.3	-45.6	1.48	1.25	-9.69
2,622.0	5.20	37.80	2,617.0	2,040.0	58.2	74.7	-51.9	0.27	-0.11	-2.74
2,718.0	6.40	53.40	2,712.5	1,944.5	64.8	81.7	-57.9	2.05	1.25	16.25
2,812.0	6.10	55.60	2,805.9	1,851.1	70.8	90.0	-63.2	0.41	-0.32	2.34
2,908.0	5.90	48.10	2,901.4	1,755.6	76.9	97.9	-68.7	0.84	-0.21	-7.81
3,003.0	6.10	62.30	2,995.9	1,661.1	82.6	106.0	-73.6	1.57	0.21	14.95
3,100.0	5.80	60.70	3,092.4	1,564.6	87.3	114.9	-77.7	0.35	-0.31	-1.65
3,195.0	4.30	63.40	3,187.0	1,470.0	91.3	122.2	-81.0	1.60	-1.58	2.84
3,288.0	3.90	53.10	3,279.8	1,377.2	94.8	127.9	-84.0	0.90	-0.43	-11.08
3,381.0	3.80	40.30	3,372.6	1,284.4	99.0	132.4	-87.8	0.93	-0.11	-13.76
3,477.0	5.90	54.30	3,468.2	1,188.8	104.3	138.5	-92.6	2.50	2.19	14.58
3,572.0	6.40	54.70	3,562.7	1,094.3	110.2	146.8	-97.8	0.53	0.53	0.42
3,668.0	6.10	53.30	3,658.1	998.9	116.4	155.2	-103.3	0.35	-0.31	-1.46
3,764.0	6.20	52.10	3,753.6	903.4	122.6	163.4	-108.8	0.17	0.10	-1.25
3,858.0	5.90	49.90	3,847.0	810.0	128.8	171.1	-114.4	0.40	-0.32	-2.34
3,954.0	5.50	50.20	3,942.6	714.4	134.9	178.4	-119.9	0.42	-0.42	0.31
4,049.0	5.30	50.80	4,037.1	619.9	140.6	185.3	-125.0	0.22	-0.21	0.63
4,144.0	5.00	47.00	4,131.7	525.3	146.2	191.7	-130.0	0.48	-0.32	-4.00
4,239.0	5.80	64.60	4,226.3	430.7	151.1	199.1	-134.3	1.93	0.84	18.53
4,335.0	6.30	61.40	4,321.8	335.2	155.7	208.1	-138.2	0.63	0.52	-3.33
4,431.0	6.10	58.30	4,417.2	239.8	160.9	217.1	-142.6	0.41	-0.21	-3.23
4,525.0	5.50	60.10	4,510.8	146.2	165.8	225.2	-146.8	0.67	-0.64	1.91
4,622.0	6.30	61.40	4,607.2	49.8	170.6	233.9	-150.9	0.84	0.82	1.34
4,718.0	5.90	58.80	4,702.7	-45.7	175.7	242.8	-155.3	0.51	-0.42	-2.71
4,813.0	5.90	56.80	4,797.2	-140.2	180.9	251.0	-159.8	0.22	0.00	-2.11
4,907.0	5.50	52.80	4,890.7	-233.7	186.3	258.7	-164.5	0.60	-0.43	-4.26
5,002.0	4.60	42.40	4,985.4	-328.4	191.9	264.9	-169.5	1.35	-0.95	-10.95
5,097.0	5.20	59.40	5,080.0	-423.0	196.9	271.1	-174.0	1.65	0.63	17.89
5,193.0	4.50	53.10	5,175.7	-518.7	201.3	277.9	-177.9	0.92	-0.73	-6.56
5,288.0	5.40	61.20	5,270.3	-613.3	205.7	284.8	-181.7	1.20	0.95	8.53
5,383.0	4.80	59.10	5,364.9	-707.9	209.9	292.1	-185.3	0.66	-0.63	-2.21
5,478.0	4.10	61.60	5,459.7	-802.7	213.6	298.5	-188.4	0.76	-0.74	2.63
5,574.0	4.10	63.10	5,555.4	-898.4	216.8	304.6	-191.1	0.11	0.00	1.56
5,668.0	4.10	67.00	5,649.2	-992.2	219.6	310.7	-193.4	0.30	0.00	4.15
5,762.0	4.10	71.20	5,742.9	-1,085.9	222.0	316.9	-195.3	0.32	0.00	4.47
5,858.0	3.30	61.50	5,838.7	-1,181.7	224.4	322.6	-197.3	1.06	-0.83	-10.10
5,953.0	2.20	47.90	5,933.6	-1,276.6	227.0	326.4	-199.5	1.34	-1.16	-14.32
5,985.0	2.00	42.10	5,965.6	-1,308.6	227.8	327.2	-200.2	0.91	-0.62	-18.12
KOP										
5,997.0	2.56	56.63	5,977.6	-1,320.6	228.1	327.6	-200.5	6.68	4.68	121.09

Survey Report



Company:	BONANZA CREEK ENERGY INC.	Local Co-ordinate Reference:	Well ANTELOPE P41-T44-29HC
Project:	WELD COUNTY, COLORADO (NAD 83)	TVD Reference:	KB @ 4657.0usft (CADE 21)
Site:	NW NE SEC. 29 T5N R62W 6th P.M.	MD Reference:	KB @ 4657.0usft (CADE 21)
Well:	ANTELOPE P41-T44-29HC	North Reference:	True
Wellbore:	JOB #: 2009-371	Survey Calculation Method:	Minimum Curvature
Design:	FINAL SURVEYS	Database:	EDM 5000.1 Single User Db

Survey

Measured Depth (usft)	Inclination (°)	Azimuth (°)	Vertical Depth (usft)	Subsea Depth (usft)	+N-S (usft)	+E-W (usft)	Vertical Section (usft)	Dogleg Rate (°/100usft)	Build Rate (°/100usft)	Turn Rate (°/100usft)
6,017.0	3.70	69.70	5,997.6	-1,340.6	228.6	328.6	-200.9	6.68	5.69	65.35
6,049.0	7.50	93.70	6,029.4	-1,372.4	228.8	331.6	-200.9	13.70	11.87	75.00
6,082.0	11.90	96.50	6,061.9	-1,404.9	228.3	337.1	-199.9	13.41	13.33	8.48
6,114.0	16.30	102.20	6,093.0	-1,436.0	226.9	344.8	-197.9	14.40	13.75	17.81
6,146.0	21.70	112.10	6,123.2	-1,466.2	223.7	354.7	-194.0	19.60	16.87	30.94
6,178.0	26.80	117.80	6,152.4	-1,495.4	218.2	366.6	-187.4	17.52	15.94	17.81
6,210.0	31.90	125.80	6,180.3	-1,523.3	209.8	379.8	-178.0	20.07	15.94	25.00
6,242.0	36.50	134.80	6,206.8	-1,549.8	198.2	393.4	-165.3	21.34	14.37	28.12
6,274.0	40.80	141.30	6,231.7	-1,574.7	183.3	406.7	-149.4	18.47	13.44	20.31
6,306.0	45.20	149.40	6,255.2	-1,598.2	165.3	419.1	-130.5	22.05	13.75	25.31
6,338.0	48.00	153.40	6,277.2	-1,620.2	144.9	430.2	-109.2	12.61	8.75	12.50
6,371.0	48.00	158.70	6,299.2	-1,642.2	122.5	440.1	-86.1	11.93	0.00	16.06
6,402.0	47.70	162.60	6,320.1	-1,663.1	100.9	447.7	-63.9	9.38	-0.97	12.58
6,434.0	47.50	166.70	6,341.6	-1,684.6	78.1	454.0	-40.7	9.48	-0.62	12.81
6,466.0	48.20	171.30	6,363.1	-1,706.1	54.8	458.5	-17.1	10.88	2.19	14.37
6,497.0	50.20	176.30	6,383.4	-1,726.4	31.5	461.0	6.4	13.81	6.45	16.13
6,529.0	50.30	178.60	6,403.8	-1,746.8	6.9	462.1	30.9	5.53	0.31	7.19
6,561.0	50.70	180.00	6,424.2	-1,767.2	-17.8	462.4	55.6	3.60	1.25	4.37
6,592.0	52.00	181.10	6,443.6	-1,786.6	-42.0	462.2	79.7	5.03	4.19	3.55
6,607.0	54.60	182.10	6,452.5	-1,795.5	-54.0	461.9	91.6	18.14	17.33	6.67
6,622.0	57.80	182.50	6,460.9	-1,803.9	-66.5	461.4	104.0	21.45	21.33	2.67
6,655.0	62.70	183.30	6,477.2	-1,820.2	-95.1	459.9	132.4	15.00	14.85	2.42
6,687.0	63.80	183.60	6,491.6	-1,834.6	-123.6	458.2	160.7	3.54	3.44	0.94
6,718.0	67.50	184.40	6,504.4	-1,847.4	-151.8	456.2	188.6	12.16	11.94	2.58
6,750.0	71.70	185.50	6,515.6	-1,858.6	-181.6	453.6	218.1	13.51	13.12	3.44
6,782.0	76.00	185.30	6,524.5	-1,867.5	-212.2	450.7	248.4	13.45	13.44	-0.62
6,814.0	82.20	185.00	6,530.5	-1,873.5	-243.5	447.9	279.3	19.40	19.37	-0.94
ICP										
6,852.0	88.96	184.49	6,533.4	-1,876.4	-281.2	444.8	316.7	17.83	17.78	-1.33
6,859.0	90.20	184.40	6,533.5	-1,876.5	-288.2	444.2	323.6	17.83	17.78	-1.33
6,921.0	91.10	184.40	6,532.8	-1,875.8	-350.0	439.5	384.8	1.45	1.45	0.00
6,952.0	90.30	184.90	6,532.4	-1,875.4	-380.9	437.0	415.4	3.04	-2.58	1.61
7,047.0	90.40	184.70	6,531.8	-1,874.8	-475.6	429.0	509.1	0.24	0.11	-0.21
7,139.0	92.20	184.20	6,529.7	-1,872.7	-567.3	421.9	599.9	2.03	1.96	-0.54
7,233.0	92.60	183.50	6,525.8	-1,868.8	-661.0	415.6	692.8	0.86	0.43	-0.74
7,326.0	89.80	183.20	6,523.9	-1,866.9	-753.8	410.1	784.8	3.03	-3.01	-0.32
7,419.0	91.00	182.60	6,523.2	-1,866.2	-846.7	405.4	877.0	1.44	1.29	-0.65
7,513.0	91.10	181.00	6,521.5	-1,864.5	-940.6	402.5	970.4	1.71	0.11	-1.70
7,606.0	90.60	180.80	6,520.1	-1,863.1	-1,033.6	401.0	1,062.9	0.58	-0.54	-0.22
7,699.0	91.30	180.80	6,518.6	-1,861.6	-1,126.6	399.7	1,155.5	0.75	0.75	0.00
7,792.0	90.60	182.00	6,517.0	-1,860.0	-1,219.5	397.5	1,248.0	1.49	-0.75	1.29
7,885.0	89.80	182.10	6,516.7	-1,859.7	-1,312.5	394.1	1,340.3	0.87	-0.86	0.11
7,979.0	89.70	181.20	6,517.1	-1,860.1	-1,406.4	391.4	1,433.7	0.96	-0.11	-0.96
8,075.0	90.20	181.10	6,517.2	-1,860.2	-1,502.4	389.5	1,529.2	0.53	0.52	-0.10
8,170.0	89.90	179.90	6,517.1	-1,860.1	-1,597.4	388.7	1,623.9	1.30	-0.32	-1.26
8,265.0	90.50	179.80	6,516.8	-1,859.8	-1,692.4	388.9	1,718.6	0.64	0.63	-0.11
8,359.0	88.90	181.40	6,517.3	-1,860.3	-1,786.4	387.9	1,812.1	2.41	-1.70	1.70
8,455.0	91.70	186.90	6,516.8	-1,859.8	-1,882.1	381.0	1,907.0	6.43	2.92	5.73
8,550.0	87.00	184.70	6,517.8	-1,860.8	-1,976.6	371.4	2,000.3	5.46	-4.95	-2.32
8,647.0	88.30	183.20	6,521.8	-1,864.8	-2,073.3	364.7	2,096.1	2.05	1.34	-1.55
8,743.0	89.70	182.10	6,523.5	-1,866.5	-2,169.1	360.3	2,191.3	1.85	1.46	-1.15
8,840.0	90.40	180.70	6,523.4	-1,866.4	-2,266.1	357.9	2,287.8	1.61	0.72	-1.44
8,936.0	91.20	180.50	6,522.1	-1,865.1	-2,362.1	356.9	2,383.4	0.86	0.83	-0.21

Survey Report



Company:	BONANZA CREEK ENERGY INC.	Local Co-ordinate Reference:	Well ANTELOPE P41-T44-29HC
Project:	WELD COUNTY, COLORADO (NAD 83)	TVD Reference:	KB @ 4657.0usft (CADE 21)
Site:	NW NE SEC. 29 T5N R62W 6th P.M.	MD Reference:	KB @ 4657.0usft (CADE 21)
Well:	ANTELOPE P41-T44-29HC	North Reference:	True
Wellbore:	JOB #: 2009-371	Survey Calculation Method:	Minimum Curvature
Design:	FINAL SURVEYS	Database:	EDM 5000.1 Single User Db

Survey

Measured Depth (usft)	Inclination (°)	Azimuth (°)	Vertical Depth (usft)	Subsea Depth (usft)	+N-S (usft)	+E-W (usft)	Vertical Section (usft)	Dogleg Rate (°/100usft)	Build Rate (°/100usft)	Turn Rate (°/100usft)
9,032.0	91.90	178.40	6,519.5	-1,862.5	-2,458.0	357.8	2,479.1	2.31	0.73	-2.19
9,063.0	92.00	179.10	6,518.4	-1,861.4	-2,489.0	358.5	2,510.0	2.28	0.32	2.26
9,096.0	91.70	178.20	6,517.4	-1,860.4	-2,522.0	359.3	2,542.9	2.87	-0.91	-2.73
9,128.0	92.00	178.00	6,516.3	-1,859.3	-2,553.9	360.3	2,574.9	1.13	0.94	-0.62
9,160.0	90.70	177.80	6,515.6	-1,858.6	-2,585.9	361.5	2,606.8	4.11	-4.06	-0.62
9,192.0	90.20	177.80	6,515.3	-1,858.3	-2,617.9	362.7	2,638.8	1.56	-1.56	0.00
9,224.0	89.80	178.20	6,515.3	-1,858.3	-2,649.9	363.9	2,670.8	1.77	-1.25	1.25
9,256.0	89.90	178.00	6,515.4	-1,858.4	-2,681.9	364.9	2,702.7	0.70	0.31	-0.62
9,288.0	89.90	178.10	6,515.5	-1,858.5	-2,713.8	366.0	2,734.7	0.31	0.00	0.31
9,320.0	89.90	178.40	6,515.5	-1,858.5	-2,745.8	367.0	2,766.6	0.94	0.00	0.94
9,351.0	89.60	178.70	6,515.7	-1,858.7	-2,776.8	367.8	2,797.6	1.37	-0.97	0.97
9,383.0	88.30	178.90	6,516.2	-1,859.2	-2,808.8	368.4	2,829.5	4.11	-4.06	0.62
9,416.0	88.60	179.70	6,517.1	-1,860.1	-2,841.8	368.8	2,862.4	2.59	0.91	2.42
9,448.0	88.60	179.30	6,517.9	-1,860.9	-2,873.8	369.1	2,894.3	1.25	0.00	-1.25
9,479.0	87.10	179.30	6,519.1	-1,862.1	-2,904.7	369.5	2,925.2	4.84	-4.84	0.00
9,511.0	86.90	179.30	6,520.7	-1,863.7	-2,936.7	369.9	2,957.1	0.62	-0.62	0.00
9,575.0	89.10	178.90	6,523.0	-1,866.0	-3,000.7	370.9	3,020.9	3.49	3.44	-0.62
9,607.0	90.60	179.50	6,523.1	-1,866.1	-3,032.6	371.3	3,052.9	5.05	4.69	1.87
9,639.0	91.00	178.90	6,522.6	-1,865.6	-3,064.6	371.8	3,084.8	2.25	1.25	-1.87
9,671.0	91.00	179.00	6,522.1	-1,865.1	-3,096.6	372.4	3,116.7	0.31	0.00	0.31
9,703.0	90.70	178.90	6,521.6	-1,864.6	-3,128.6	373.0	3,148.6	0.99	-0.94	-0.31
9,735.0	90.60	179.30	6,521.2	-1,864.2	-3,160.6	373.5	3,180.6	1.29	-0.31	1.25
9,768.0	90.20	179.20	6,521.0	-1,864.0	-3,193.6	373.9	3,213.5	1.25	-1.21	-0.30
9,800.0	90.40	178.60	6,520.8	-1,863.8	-3,225.6	374.5	3,245.4	1.98	0.62	-1.87
9,895.0	89.80	178.80	6,520.7	-1,863.7	-3,320.6	376.7	3,340.3	0.67	-0.63	0.21
9,990.0	90.80	178.40	6,520.2	-1,863.2	-3,415.5	379.0	3,435.1	1.13	1.05	-0.42
10,085.0	90.90	177.70	6,518.8	-1,861.8	-3,510.5	382.2	3,530.0	0.74	0.11	-0.74
10,180.0	90.70	177.10	6,517.4	-1,860.4	-3,605.4	386.5	3,624.9	0.67	-0.21	-0.63
10,276.0	90.20	178.00	6,516.7	-1,859.7	-3,701.3	390.6	3,720.8	1.07	-0.52	0.94
10,339.0	90.80	178.50	6,516.1	-1,859.1	-3,764.3	392.6	3,783.8	1.24	0.95	0.79
10,371.0	90.30	179.10	6,515.8	-1,858.8	-3,796.2	393.2	3,815.7	2.44	-1.56	1.87
10,465.0	90.40	178.40	6,515.2	-1,858.2	-3,890.2	395.3	3,909.5	0.75	0.11	-0.74
10,561.0	91.50	177.80	6,513.7	-1,856.7	-3,986.2	398.5	4,005.4	1.31	1.15	-0.62
10,656.0	91.30	177.10	6,511.3	-1,854.3	-4,081.0	402.7	4,100.3	0.77	-0.21	-0.74
10,751.0	91.20	177.10	6,509.3	-1,852.3	-4,175.9	407.5	4,195.2	0.11	-0.11	0.00
10,846.0	92.10	175.80	6,506.5	-1,849.5	-4,270.7	413.4	4,290.2	1.66	0.95	-1.37
10,936.0	92.40	175.30	6,503.0	-1,846.0	-4,360.3	420.3	4,380.1	0.65	0.33	-0.56
LAST SURVEY - OCT 14, 2014										
11,044.0	92.20	174.80	6,498.7	-1,841.7	-4,467.8	429.7	4,488.0	0.50	-0.19	-0.46
PROJECTION TO TD										
11,094.0	92.00	174.80	6,496.8	-1,839.8	-4,517.6	434.2	4,538.0	0.40	-0.40	0.00

Survey Report



Company:	BONANZA CREEK ENERGY INC.	Local Co-ordinate Reference:	Well ANTELOPE P41-T44-29HC
Project:	WELD COUNTY, COLORADO (NAD 83)	TVD Reference:	KB @ 4657.0usft (CADE 21)
Site:	NW NE SEC. 29 T5N R62W 6th P.M.	MD Reference:	KB @ 4657.0usft (CADE 21)
Well:	ANTELOPE P41-T44-29HC	North Reference:	True
Wellbore:	JOB #: 2009-371	Survey Calculation Method:	Minimum Curvature
Design:	FINAL SURVEYS	Database:	EDM 5000.1 Single User Db

Targets										
Target Name	Dip Angle	Dip Dir.	TVD	+N/-S	+E/-W	Northing	Easting	Latitude	Longitude	
- hit/miss target	(°)	(°)	(usft)	(usft)	(usft)	(usft)	(usft)			
- Shape										
7" ICP *NEW*- ANTEI - survey misses target center by 66.0usft at 6878.0usft MD (6533.4 TVD, -307.2 N, 442.8 E) - Point	0.00	0.00	6,509.0	-302.2	381.6	1,382,027.26	3,322,713.27	40.376280	-104.341660	
KOP - ANTELOPE P4 - survey misses target center by 68.2usft at 6039.6usft MD (6020.1 TVD, 228.8 N, 330.5 E) - Point	0.00	0.00	6,014.7	271.9	383.1	1,382,601.31	3,322,707.28	40.377856	-104.341655	
7" ICP *NEW*- ANTEI - survey misses target center by 61.8usft at 6877.8usft MD (6533.4 TVD, -307.0 N, 442.8 E) - Point	0.00	0.00	6,526.0	-302.2	381.6	1,382,027.26	3,322,713.27	40.376280	-104.341660	
BHL - ANTELOPE P4 - survey misses target center by 64.1usft at 11084.0usft MD (6497.2 TVD, -4507.7 N, 433.3 E) - Point	0.00	0.00	6,509.0	-4,513.8	370.6	1,377,816.06	3,322,757.25	40.364720	-104.341700	
BHL - ANTELOPE P4 - survey misses target center by 66.3usft at 11083.7usft MD (6497.2 TVD, -4507.3 N, 433.3 E) - Point	0.00	0.00	6,518.0	-4,513.8	370.6	1,377,816.06	3,322,757.25	40.364720	-104.341700	
KOP - ANTELOPE P4 - survey misses target center by 69.0usft at 6030.6usft MD (6011.1 TVD, 228.8 N, 329.6 E) - Point	0.00	0.00	6,005.7	271.9	383.1	1,382,601.31	3,322,707.28	40.377856	-104.341655	
7" ICP *NEW*- ANTEI - survey misses target center by 63.3usft at 6877.9usft MD (6533.4 TVD, -307.1 N, 442.8 E) - Point	0.00	0.00	6,518.0	-302.2	381.6	1,382,027.26	3,322,713.27	40.376280	-104.341660	
BHL - ANTELOPE P4 - survey misses target center by 69.2usft at 11083.4usft MD (6497.2 TVD, -4507.0 N, 433.2 E) - Point	0.00	0.00	6,526.0	-4,513.8	370.6	1,377,816.06	3,322,757.25	40.364720	-104.341700	
KOP - ANTELOPE P4 - survey misses target center by 67.5usft at 6047.5usft MD (6028.0 TVD, 228.8 N, 331.4 E) - Point	0.00	0.00	6,022.7	271.9	383.1	1,382,601.31	3,322,707.28	40.377856	-104.341655	

Survey Annotations					
Measured Depth (usft)	Vertical Depth (usft)	Local Coordinates		Comment	
		+N/-S (usft)	+E/-W (usft)		
470.0	470.0	0.0	0.0	SURFACE CASING	
1,434.0	1,433.8	-17.9	7.2	START NUDGE	
5,997.0	5,977.6	228.1	327.6	KOP	
6,852.0	6,533.4	-281.2	444.8	ICP	
11,044.0	6,498.7	-4,467.8	429.7	LAST SURVEY - OCT 14, 2014	
11,094.0	6,496.8	-4,517.6	434.2	PROJECTION TO TD	

Checked By: _____	Approved By: _____	Date: _____
-------------------	--------------------	-------------