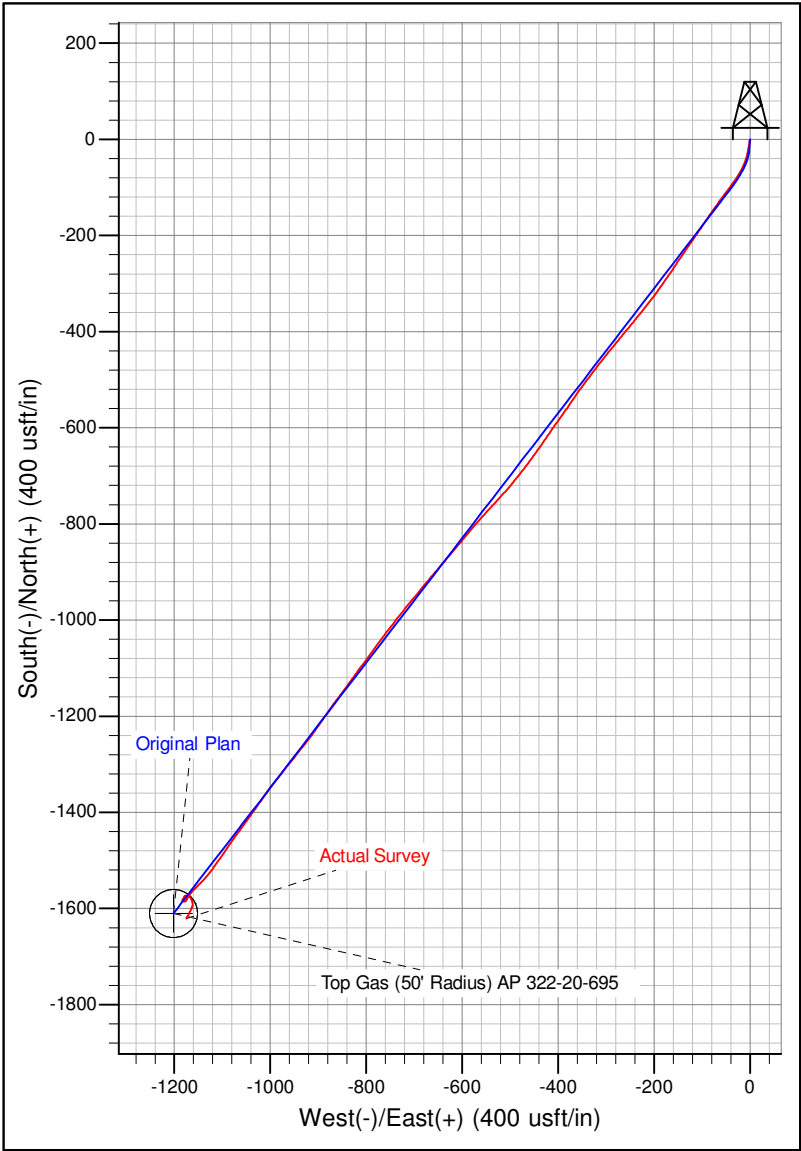
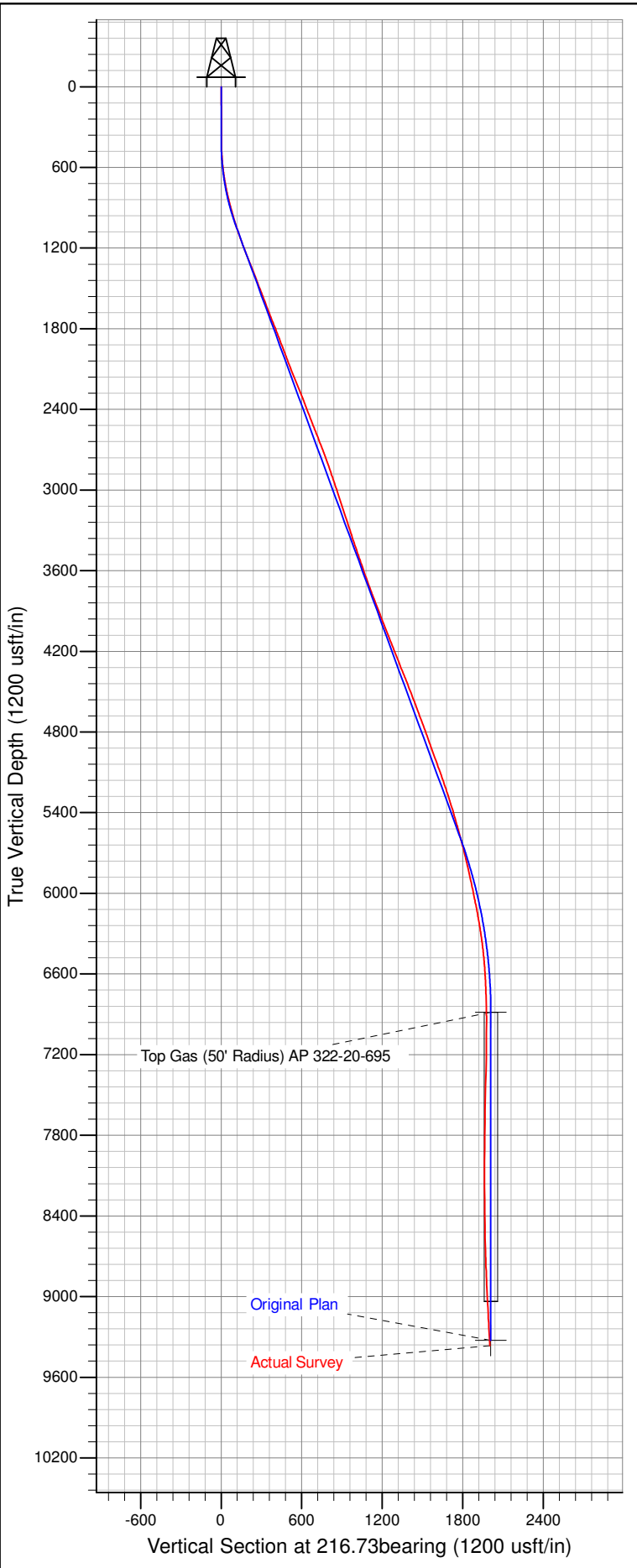




Well Name: AP 322-20-695  
 Surface Location: AP 21-20-695 Pad  
 North American Datum 1983 , US State Plane 1983 , Colorado Central Zone  
 Ground Elevation: 6909.00  
 +N/-S +E/-W Northing Easting Latitude Longitude Slot  
 0.00 0.00 1623235.02000 2288336.38000 39.51743 -108.02293 B02  
 KELLY BUSHING @ 6935.00usft (Nabors 573 (26' RKB) kjs)



Azimuths to True North  
 Magnetic North: 9.98°  
 Magnetic Field  
 Strength: 51945.1snT  
 Dip Angle: 65.67°  
 Date: 6/26/2014  
 Model: IGRF2010