

N. 1/4 COR.
SEC. 10, T2N, R67W
FOUND 3 1/4" ALUM. CAP
L.S. NO. 23500

T2N, R67W

N. 1/4 COR.
SEC. 11, T2N, R67W
FOUND 3 1/4" ALUM. CAP
L.S. NO. 33642

BUTTERBALL 34C-11HZ
SURFACE LOCATION

NE. COR.
SEC. 10, T2N, R67W
FOUND 3 1/4" BRASS CAP
NUMBER ILLEGIBLE

N. CENTER 1/16 COR.
SEC. 11, T2N, R67W
FOUND 2 1/2" ALUM. CAP
L.S. NO. 9644

E. 1/4 COR.
SEC. 10, T2N, R67W
FOUND 1952 BLM
BRASS CAP

CENTER 1/4 COR.
SEC. 11, T2N, R67W
FOUND 3 1/4" ALUM. CAP
L.S. NO. 12330

S. 1/4 COR.
SEC. 11, T2N, R67W
FOUND 3 1/4" ALUM. CAP
L.S. NO. 16405

S. 1/4 COR.
SEC. 10, T2N, R67W
FOUND 3 1/4" ALUM. CAP
L.S. NO. 13258

SURFACE LOCATION
GROUND ELEVATION=4919.6'
NAD 83
LATITUDE= 40.158310°
LONGITUDE= -104.872458°

BOTTOM HOLE LOCATION
NAD 83
LATITUDE= 40.145716°
LONGITUDE= -104.866616°

LATITUDE= 40°08'44.578"
LONGITUDE= -104°51'59.818"

CERTIFICATE OF SURVEYOR:

THIS IS TO CERTIFY THAT THE ABOVE PLAT WAS PREPARED FROM FIELD NOTES OF ACTUAL SURVEY MADE BY ME OR UNDER MY SUPERVISION AND THAT THE SAME ARE TRUE AND CORRECT TO THE BEST OF MY KNOWLEDGE AND BELIEF. THIS CERTIFICATE DOES NOT REPRESENT A LAND SURVEY PLAT OR IMPROVEMENT SURVEY PLAT AS DEFINED BY C.S. 38-513-02 AND CANNOT BE RELIED UPON TO DETERMINE OWNERSHIP.

Benjamin J. Reenders
BENJAMIN J. REENDERS
PROFESSIONAL LAND SURVEYOR
COLORADO REGISTRATION NUMBER 4836
11/11/14

NOTICE:
ACCORDING TO COLORADO STATE LAW YOU MUST COMMENCE ANY LEGAL ACTION BASED UPON ANY DEFECT IN THIS SURVEY WITHIN THREE YEARS AFTER YOU FIRST DISCOVER SUCH DEFECT. IN NO EVENT MAY ANY ACTION BASED UPON ANY DEFECT IN THIS SURVEY BE COMMENCED MORE THAN TEN YEARS FROM THE DATE ON THE CERTIFICATION SHOWN HEREON.

NOTE:
MAGNETIC NORTH IS CURRENT AS OF 8/11/2014.
MAGNETIC NORTH CHANGES WEST 0°08' PER YEAR.

NOTES:

- ▲ INDICATES FOUND SECTION CORNER
- INDICATES CALCULATED CORNER
- ELEVATION BASED ON NAVD88 (GEOID09)
- BASIS OF BEARING DERIVED FROM COLORADO COORDINATE SYSTEM 1983 NORTH ZONE UNLESS OTHERWISE NOTED.
- ALL MEASURED DISTANCES ARE GRID.
- COMBINED SCALE FACTOR: .99972297
- OPERATOR: ROB WILSON / PDOP = 1.4
- SEE ADDENDUM TO WELL LOCATION CERTIFICATE FOR EXISTING IMPROVEMENTS WITHIN 500' OF THE WELL PAD.
- WELL FOOTAGES ARE MEASURED AT RIGHT ANGLES TO THE SECTION LINES.
- THE BOTTOM OF HOLE BEARS S19°59'58"E 4870' FROM THE SURFACE LOCATION.



SCALE: 1" = 1000'

WELL PAD - BUTTERBALL 37N-10HZ

BUTTERBALL 34C-11HZ
WELL LOCATION CERTIFICATE
567' FNL & 1489' FEL NWNE (SURFACE)
LOCATED IN SECTION 10
130' FSL & 175' FWL SWSW (BOTTOM)
LOCATED IN SECTION 11
T2N, R67W, 6TH P.M.
WELD COUNTY, COLORADO

Kerr-McGee Oil &
Gas Onshore L.P.
1099 18th Street
Denver, Colorado 80202



CONSULTING, LLC

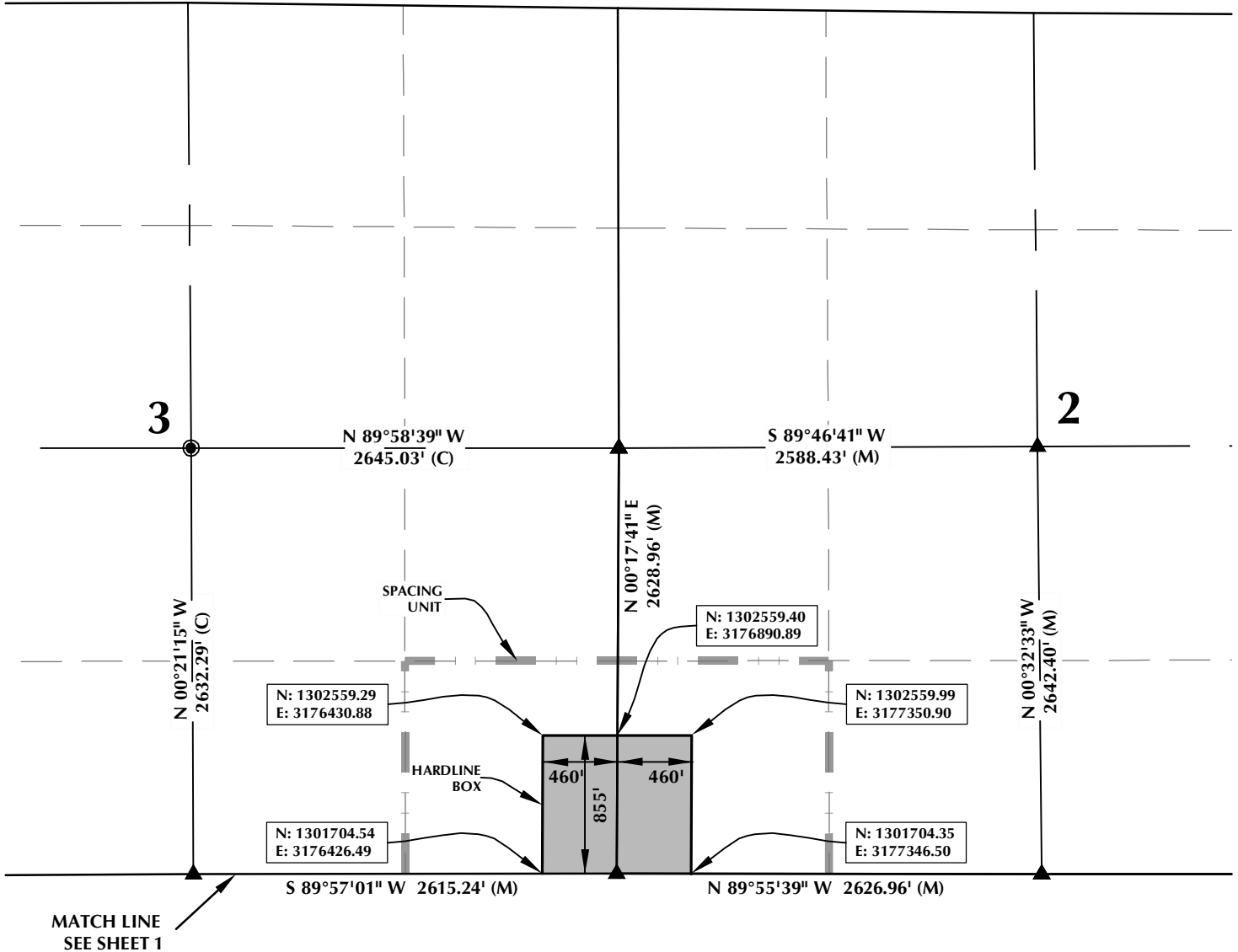
SHERIDAN OFFICE
2155 North Main Street
Sheridan, Wyoming 82801
Phone 307-674-0609

LOVELAND OFFICE
1635 Foxtrail Drive, Suite 204
Loveland, Colorado 80538
Phone 970-776-4331

DRAFTED BY:	LMO	CHECKED BY:	BJR
DATE DRAFTED:	8/15/14	DATE SURVEYED:	8/11/14
REVISED:	11/11/14	FILE NAME:	13-90

BUTTERBALL 34C-11HZ

T2N, R67W



HEEL LOCATION
NAD 83
N: 1,301,654.71'
E: 3,177,061.57'

LATITUDE= 40.159701°
LONGITUDE= -104.866495°

LATITUDE= 40°09'34.923"
LONGITUDE= -104°51'59.382"

AVAILABLE FOOTAGE
6986'

BOTTOM HOLE LOCATION
NAD 83
N: 1,296,480.21'
E: 3,177,064.10'

LATITUDE= 40.145497°
LONGITUDE= -104.866618°

LATITUDE= 40°08'43.787"
LONGITUDE= -104°51'59.826"



SCALE: 1" = 1000'

NOTES:

1. INDICATES FOUND SECTION CORNER
2. INDICATES CALCULATED CORNER
3. BASIS OF BEARING DERIVED FROM COLORADO COORDINATE SYSTEM 1983 NORTH ZONE UNLESS OTHERWISE NOTED.
4. DRAWING NORTHING / EASTING COORDINATES ARE BASED ON COLORADO COORDINATE SYSTEM 1983 NORTH ZONE UNLESS OTHERWISE NOTED.
5. COMBINED SCALE FACTOR: .99972297
6. THIS EXHIBIT DOES NOT REPRESENT A LAND SURVEY PLAT OR IMPROVEMENT SURVEY PLAT AS DEFINED BY C.R.S. 38-51-102 AND CANNOT BE RELIED UPON TO DETERMINE OWNERSHIP.

WELL PAD - BUTTERBALL 37N-10HZ

BUTTERBALL 34C-11HZ
SPACING UNIT EXHIBIT
50' FNL & 175' FWL NWNW (HEEL)
50' FSL & 175' FWL SWSW (BOTTOM)
LOCATED IN SECTION 11
T2N, R67W, 6TH P.M.
WELD COUNTY, COLORADO

**Kerr-McGee Oil &
Gas Onshore L.P.**
1099 18th Street
Denver, Colorado 80202



CONSULTING, LLC

SHERIDAN OFFICE
2155 North Main Street
Sheridan, Wyoming 82801
Phone 307-674-0609

LOVELAND OFFICE
1635 Foxtrail Drive, Suite 204
Loveland, Colorado 80538
Phone 970-776-4331

DRAFTED BY:	LMO	CHECKED BY:	BJR	SHEET NO:
DATE DRAFTED:	8/15/14	DATE SURVEYED:	8/11/14	3
REVISED:		FILE NAME:	13-90	3 OF 3