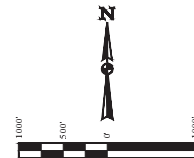
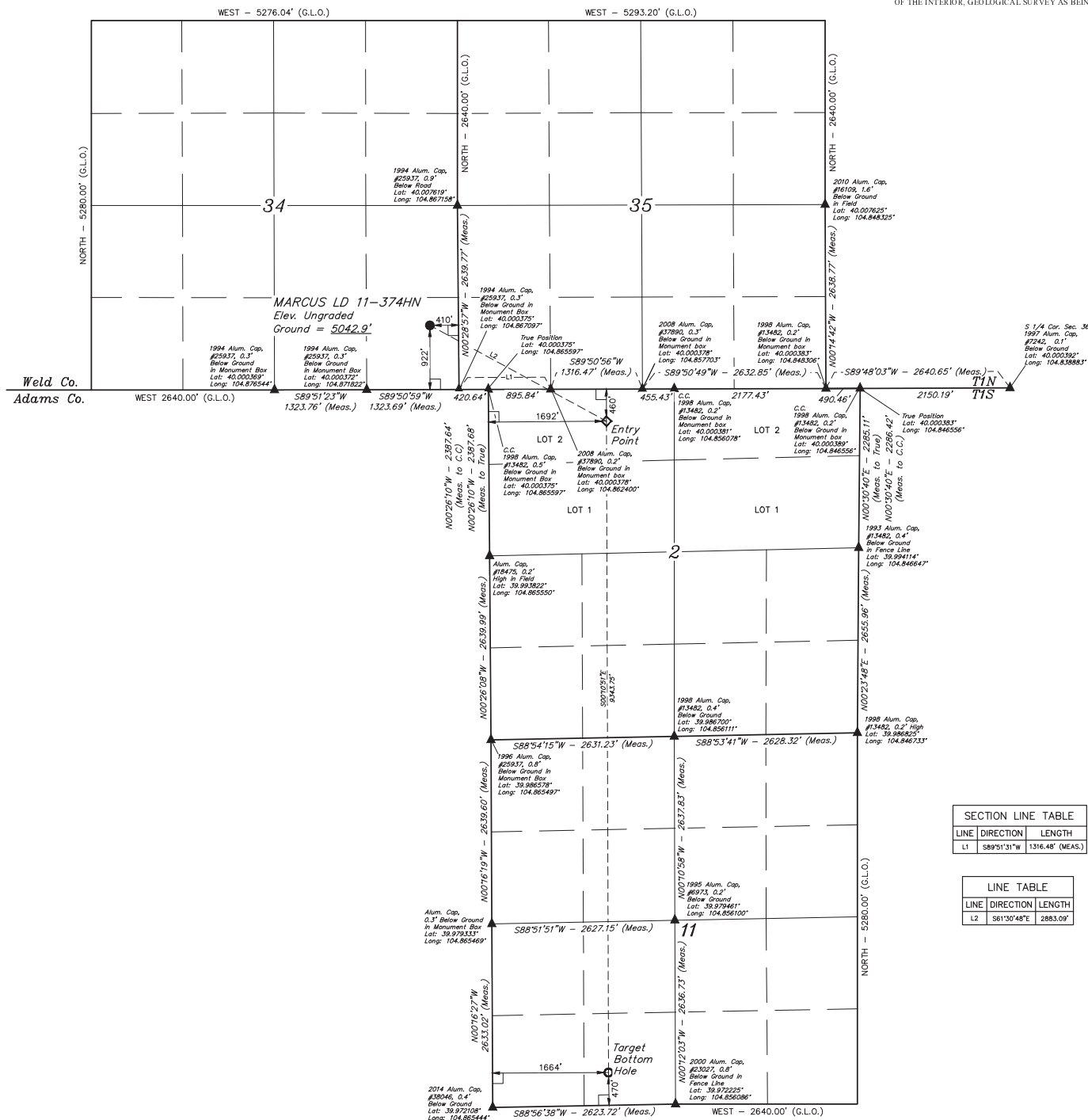


*T1N, R67W, 6th P.M.*



### BASIS OF BEARINGS

BENCHMARK JR 53 5026 LOCATED IN THE SW 1/4 SE 1/4  
OF SECTION 18, T1N, R68W, 6th P.M., TAKEN FROM 1988  
PUBLISHED DATUM BY THE UNITED STATES DEPARTMENT  
OF THE INTERIOR, GEOLOGICAL SURVEY AS BEING 5028 FEET



SECTION LINE TABLE		
LINE	DIRECTION	LENGTH
L1	S89°51'31"W	1316.48' (MEAS.

LINE TABLE		
LINE	DIRECTION	LENGTH
L2	S61°30'48"E	2883.09'

CERTIFICATE

THIS IS TO CERTIFY THAT THE ABOVE MAP WAS PREPARED FROM THE  
NOTES OF ACTUAL SURVEYS MADE BY ME OR UNDER MY SUPERVISION,  
AND THAT THE SAME ARE TRUE AND CORRECT TO THE BEST OF MY  
KNOWLEDGE AND BELIEF.

**GREAT WESTERN OIL & GAS COMPANY**

MARCUS LD 11-374HN  
SE 1/4 SE 1/4, SECTION 34, T1N, R67W, 6th P.M.  
WELD COUNTY, COLORADO

**UELS, LLC**  
Corporate Office \* 85 South 200 East  
Vernal, UT 84078 \* (435) 789-1017

**PDO P - 1,4**



SURVEYED BY: JARED CHRISTOPHER, J.C.	DATE: 11-20-14
DRAWN BY: J.W.	DATE DRAWN: 12-01-14
SCALE: 1" = 1000'	REVISED: 00.00.00

### WELL LOCATION PLAT

NAD83 (TARGET BOTTOM HOLE)	NAD 83 (ENTRY POINT)	NAD 83 (SURFACE LOCATION)
LATITUDE = 39°58'24.50" (39.973472)	LATITUDE = 39°59'56.82" (39.999117)	LATITUDE = 40°00'0.045" (40.002903)
LONGITUDE = 104°51'34.25" (104.859514)	LONGITUDE = 104°51'34.38" (104.859550)	LONGITUDE = 104°52'06.90" (104.868583)
NAD 27 (TARGET BOTTOM HOLE)	NAD 27 (ENTRY POINT)	NAD 27 (SURFACE LOCATION)
LATITUDE = 39°58'24.56" (39.973489)	LATITUDE = 39°59'56.87" (39.999131)	LATITUDE = 40°00'0.51" (40.002919)
LONGITUDE = 104°51'35.34" (104.858983)	LONGITUDE = 104°51'33.42" (104.859009)	LONGITUDE = 104°52'04.09" (104.868053)