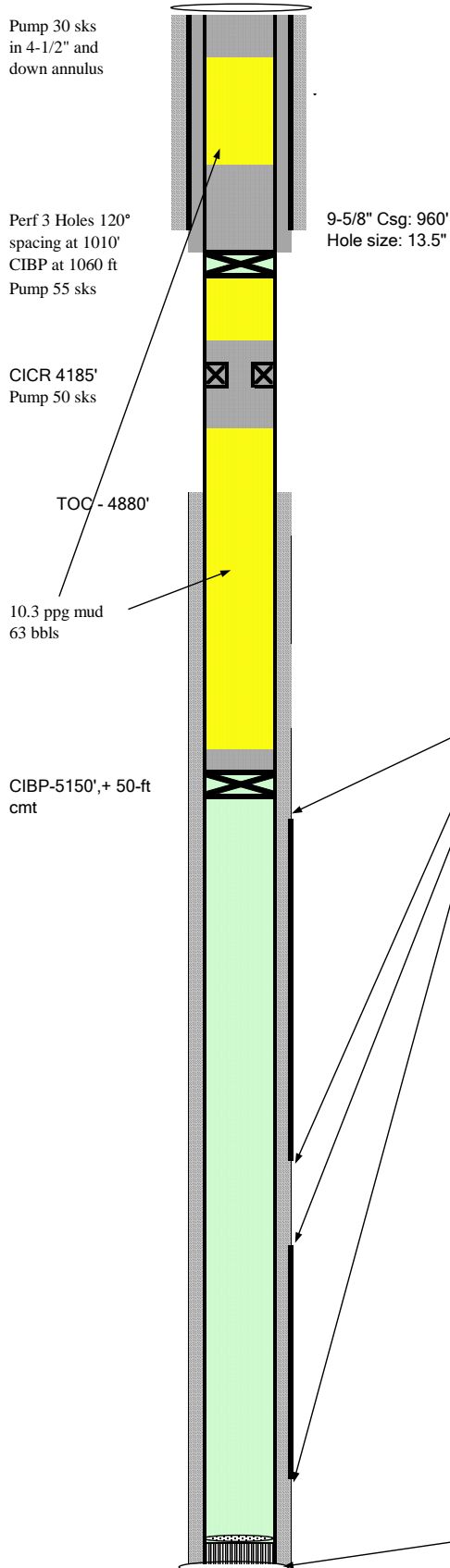




Exploration and Production

Well P&A Procedure



Well Name **PA 13-31**
 Location **SESW 31 6S 95W**
 Field **Parachute**
 County **Garfield, CO**
 API **05-045-07850**
 ELEV **5,561'**
 Footages **644 FSL 1242 FWL**

Spud 11/04/2001

Casing	960'	9-5/8" 32.3# H-40
Cement	400 sx	
Casing	7048'	4-1/2" 11.6# I-80
Cement	825 sx	

Tubing **6328'**

Formation Tops

Mesaverde	5220'
Cameo	6481'

TOC - Bond Log 4880'

Completed Intervals

	<u>Depth</u>	<u># Holes</u>
<u>MV</u>	5220' - 6306'	68
<u>Cameo</u>	6481' - 6847'	18

P&A Calculations

4-1/2" OD csg in 7-7/8" hole, 0.0406 bbls/ft, 0.2278 ft³/ft
 4-1/2" OD csg in 9-5/8" 32.3# csg, 0.0588 bbls/ft, 0.3313 ft³/ft
 4-1/2" OD 11.6# csg capacity, 0.0155 bbls/ft, 0.0872 ft³/ft
 1.14 sks/ft³, cement yield