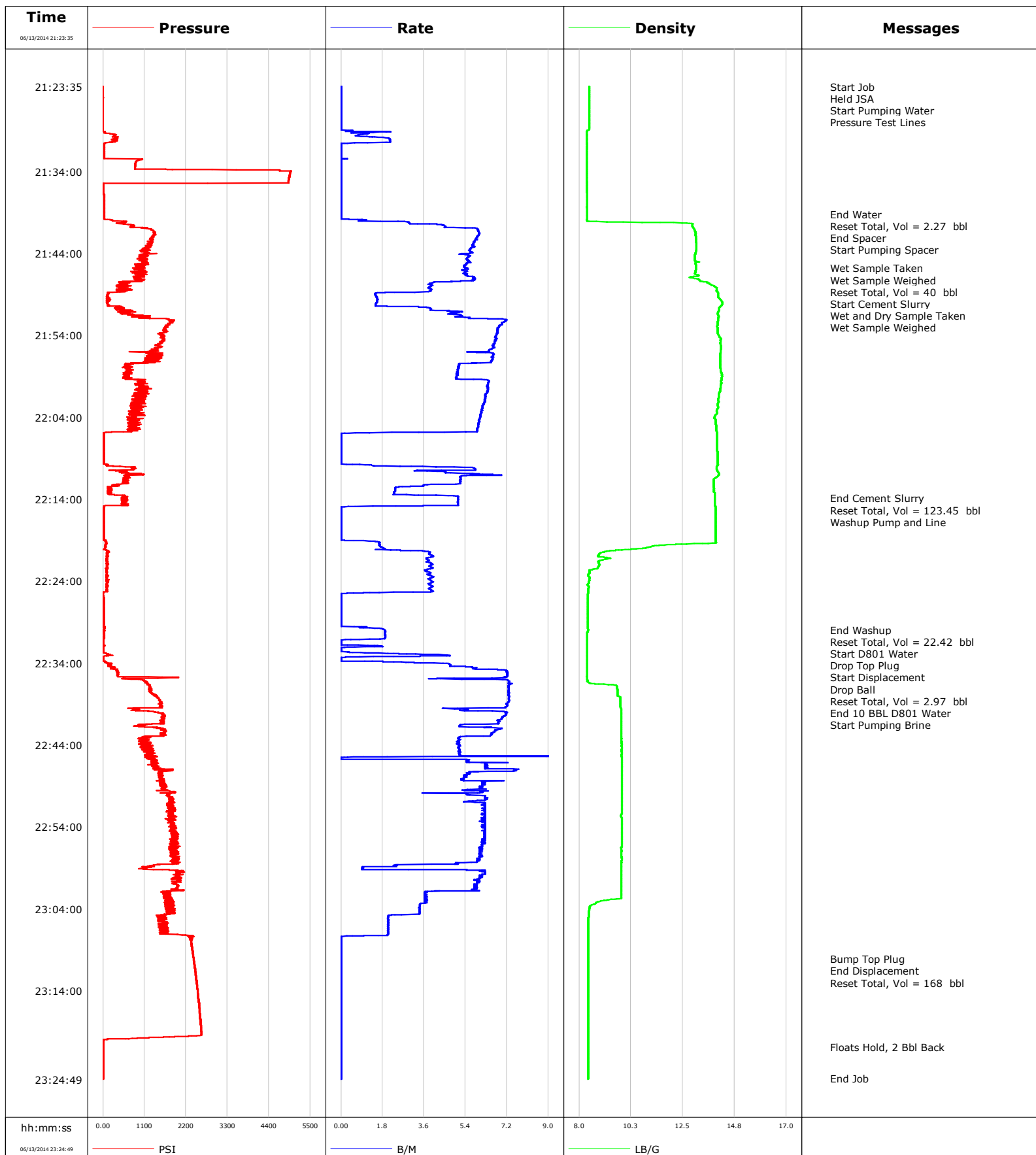


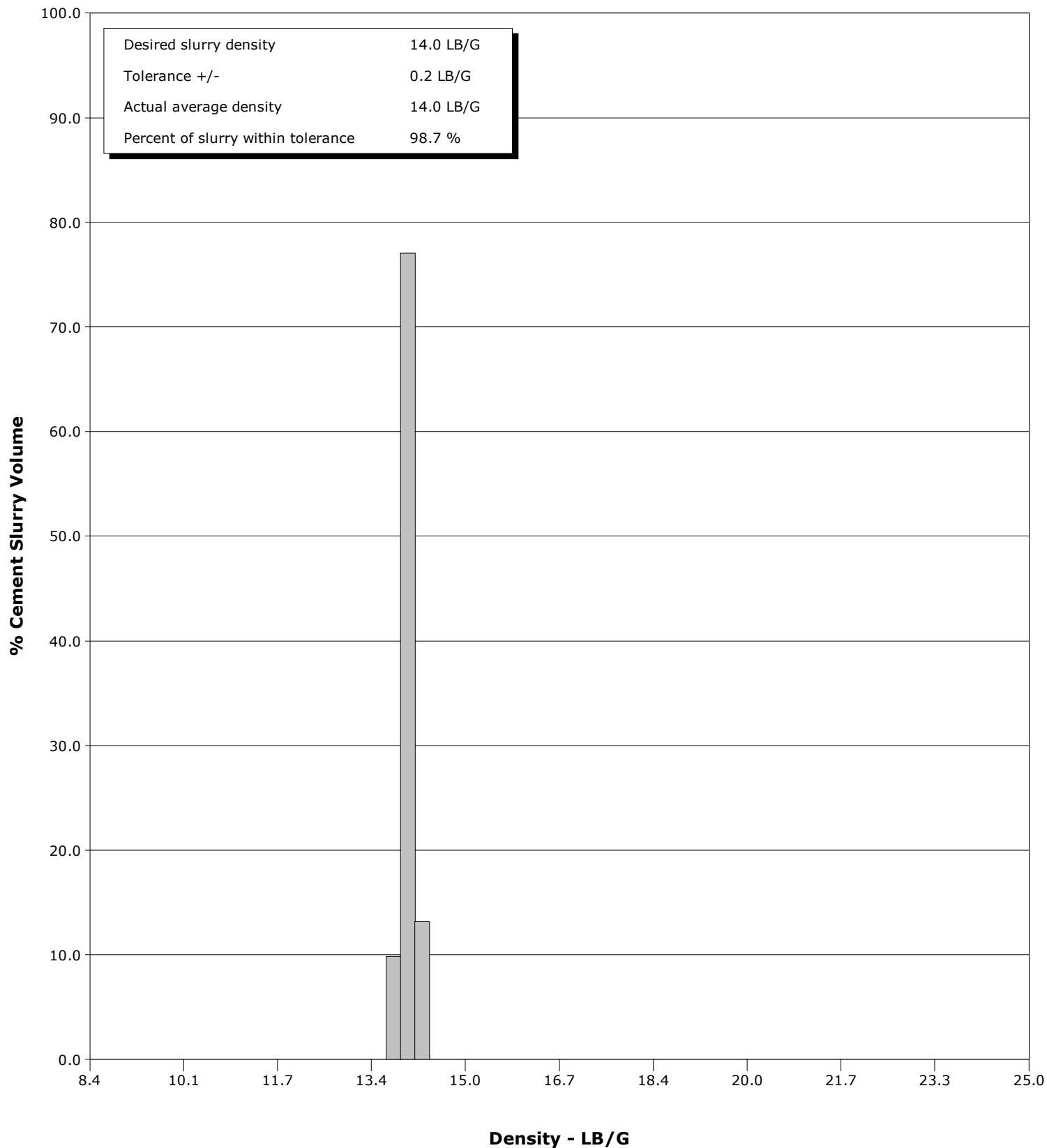
Well	Bohrer 2E-19H	Client	Encana
Field	DJ	SIR No.	C459-02798
Engineer	Ryan Drilling	Job Type	4.5" Production
Country	United States	Job Date	06-13-2014



Well Bohrer 2E-19H
Field DJ
Engineer Ryan Drilling
Country United States

Client Encana
SIR No. C459-02798
Job Type 4.5" Production
Job Date 06-13-2014

Cement Slurry - 06/13/2014 21:48:14 to 06/13/2014 22:13:53



Cementing Service Report

					Customer Encana			Job Number C459-02798	
Well Bohrer 2E-19H 2E-19H			Location (legal) Cheyenne		Schlumberger Location Rock Springs			Job Start Jun/13/2014	
Field DJ		Formation Name/Type Dirty-Sandstone		Deviation 90 deg		Bit Size 6.1 in		Well MD 11277.0 ft	
County Weld		State/Province Colorado		BHP psi		BHST 196 degF		BHCT 195 degF	
Well Master 0631513495		API/UWI						Pore Press. Gradient lb/gal	
Rig Name Paterson 326		Drilled For Oil		Service Via Land		Casing/Liner			
						Depth, ft		Size, in	
						Weight, lb/ft		Grade	
						Thread			
Offshore Zone		Well Class New		Well Type Development		7300.0		26.0	
						11277.0		P110	
						4.5		13.5	
						P110		BUTT	
Drilling Fluid Type Bentonite		Max. Density 11.00 lb/gal		Plastic Viscosity cP		Tubing/Drill Pipe			
						T/D		Depth, ft	
						Size, in		Weight, lb/ft	
						Grade		Thread	
Service Line Cementing		Job Type 4.5" Production							
Max. Allowed Tub. Press psi		Max. Allowed Ann. Press psi		WH Connection		Perforations/Open Hole			
						Top, ft		Bottom, ft	
						shot/ft		No. of Shots	
						ft		ft	
						ft		ft	
						ft		ft	
						Treat Down Casing		Displacement 168.3 bbl	
						Packer Type		Packer Depth ft	
						Tubing Vol. bbl		Casing Vol. 168.3 bbl	
						Annular Vol. 0.1 bbl		Openhole Vol. 0.1 bbl	
Casing/Tubing Secured <input checked="" type="checkbox"/>		1 Hole Vol. Circulated prior to Cement <input checked="" type="checkbox"/>				Casing Tools		Squeeze Job	
Lift Pressure psi						Shoe Type Guide		Squeeze Type	
Pipe Rotated <input checked="" type="checkbox"/>		Pipe Reciprocated <input type="checkbox"/>				Shoe Depth 11277.0 ft		Tool Type	
No. Centralizers 22		Top Plugs 1		Bottom Plugs		Stage Tool Type		Tool Depth ft	
Cement Head Type						Stage Tool Depth ft		Tail Pipe Size in	
Job Scheduled For Jun/13/2014 20:00		Arrived on Location Jun/13/2014 20:00		Leave Location Jun/14/2014 00:30		Collar Type Float		Tail Pipe Depth ft	
						Collar Depth 11274.0 ft		Sqz. Total Vol. bbl	
Date	Time 24-hr clock	Treating Pressure PSI	Flow Rate B/M	Density LB/G	Volume BBL	CMT_AN_PRES PSI	Message		
06/13/2014	21:23:35	-3	0.0	8.43	0.0	0	Started Acquisition		
06/13/2014	21:23:38	-3	0.0	8.44	0.0	0	Start Job		
06/13/2014	21:23:39	-3	0.0	8.43	0.0	0	Held JSA		
06/13/2014	21:23:50	-3	0.0	8.43	0.0	0	Start Pumping Water		
06/13/2014	21:23:52	-3	0.0	8.44	0.0	0	Pressure Test Lines		
06/13/2014	21:24:35	-3	0.0	8.44	0.0	0			
06/13/2014	21:25:35	-6	0.0	8.44	0.0	0			
06/13/2014	21:26:35	-5	0.0	8.44	0.0	0			
06/13/2014	21:27:35	-5	0.0	8.44	0.0	0			
06/13/2014	21:28:35	-6	0.0	8.44	0.0	0			
06/13/2014	21:29:35	321	0.7	8.34	0.6	0			
06/13/2014	21:30:35	38	0.0	8.34	2.3	0			
06/13/2014	21:31:35	30	0.0	8.34	2.3	0			
06/13/2014	21:32:35	976	0.0	8.34	2.3	0			
06/13/2014	21:33:35	848	0.0	8.34	2.3	0			
06/13/2014	21:34:35	4943	0.0	8.34	2.3	0			
06/13/2014	21:35:35	3	0.0	8.34	2.3	0			
06/13/2014	21:36:35	5	0.0	8.34	2.3	0			
06/13/2014	21:37:35	33	0.0	8.34	2.3	0			
06/13/2014	21:38:35	35	0.0	8.34	2.3	0			
06/13/2014	21:39:11	35	0.0	8.34	2.3	0	End Water		

Well			Field		Job Start	Customer		Job Number
Bohrer 2E-19H 2E-19H			DJ		Jun/13/2014	Encana		C459-02798
Date	Time 24-hr clock	Treating Pressure PSI	Flow Rate B/M	Density LB/G	Volume BBL	CMT_AN_PRES PSI	Message	
06/13/2014	21:39:35	35	0.0	8.34	0.0	0		
06/13/2014	21:40:10	610	2.9	9.20	0.5	0	End Spacer	
06/13/2014	21:40:26	558	4.2	12.92	1.3	0	Start Pumping Spacer	
06/13/2014	21:40:35	740	4.5	12.91	1.9	0		
06/13/2014	21:41:35	1389	6.0	13.06	7.5	0		
06/13/2014	21:42:35	1241	5.8	13.08	13.4	0		
06/13/2014	21:43:35	1220	5.6	13.08	19.1	0		
06/13/2014	21:44:35	1078	5.5	13.03	24.6	0		
06/13/2014	21:45:35	1112	5.4	13.07	30.1	0		
06/13/2014	21:45:47	1110	5.5	13.07	31.2	0	Wet Sample Taken	
06/13/2014	21:46:01	1068	5.3	13.06	32.4	0	Wet Sample Weighed	
06/13/2014	21:46:35	1061	5.4	13.12	35.5	0		
06/13/2014	21:47:20	938	5.7	13.23	39.7	0	Reset Total, Vol = 40 bbl	
06/13/2014	21:47:35	581	4.0	13.56	1.1	0		
06/13/2014	21:48:14	611	3.8	13.97	3.7	0	Start Cement Slurry	
06/13/2014	21:48:18	420	3.9	13.97	3.9	0	Wet and Dry Sample Taken	
06/13/2014	21:48:29	596	3.9	13.98	4.6	0	Wet Sample Weighed	
06/13/2014	21:48:35	649	3.9	13.96	5.0	0		
06/13/2014	21:49:35	118	1.6	14.12	6.9	0		
06/13/2014	21:50:35	466	3.7	14.09	8.7	0		
06/13/2014	21:51:35	766	5.2	14.04	13.2	0		
06/13/2014	21:52:35	1753	7.0	14.01	19.6	0		
06/13/2014	21:53:35	1681	6.8	14.02	26.5	0		
06/13/2014	21:54:35	1614	6.7	14.13	33.2	0		
06/13/2014	21:55:35	1420	6.6	14.16	39.9	0		
06/13/2014	21:56:35	1557	6.6	14.11	46.3	0		
06/13/2014	21:57:35	582	5.1	14.11	52.6	0		
06/13/2014	21:58:35	550	5.0	14.18	57.7	0		
06/13/2014	21:59:35	948	6.4	14.16	63.0	0		
06/13/2014	22:00:35	1025	6.4	14.13	69.3	0		
06/13/2014	22:01:35	1136	6.3	14.05	75.6	0		
06/13/2014	22:02:35	993	6.1	14.02	81.9	0		
06/13/2014	22:03:35	918	6.1	13.97	88.0	0		
06/13/2014	22:04:35	778	6.0	13.92	94.0	0		
06/13/2014	22:05:35	869	5.9	13.95	100.0	0		
06/13/2014	22:06:35	24	0.0	13.98	101.6	0		
06/13/2014	22:07:35	24	0.0	13.99	101.6	0		
06/13/2014	22:08:35	23	0.0	14.02	101.6	0		
06/13/2014	22:09:35	22	0.0	14.02	101.6	0		
06/13/2014	22:10:35	510	4.2	14.01	104.9	0		
06/13/2014	22:11:35	571	5.2	13.84	110.2	0		
06/13/2014	22:12:35	191	2.4	13.85	114.6	0		
06/13/2014	22:13:35	597	4.9	13.89	117.1	0		
06/13/2014	22:13:53	630	5.1	13.88	118.6	0	End Cement Slurry	
06/13/2014	22:14:35	504	5.1	13.89	122.2	0		
06/13/2014	22:14:57	28	0.1	13.93	123.4	0	Reset Total, Vol = 123.45 bbl	
06/13/2014	22:15:10	23	0.0	13.93	0.0	0	Washup Pump and Line	
06/13/2014	22:15:35	22	0.0	13.92	0.0	0		
06/13/2014	22:16:35	21	0.0	13.92	0.0	0		
06/13/2014	22:17:35	22	0.0	13.92	0.0	0		
06/13/2014	22:18:35	16	0.0	13.92	0.0	0		
06/13/2014	22:19:35	87	1.7	11.70	0.8	0		
06/13/2014	22:20:35	114	3.8	8.92	3.3	0		
06/13/2014	22:21:35	96	3.8	8.84	7.1	0		

Well Bohrer 2E-19H 2E-19H			Field DJ		Job Start Jun/13/2014	Customer Encana		Job Number C459-02798
Date	Time 24-hr clock	Treating Pressure PSI	Flow Rate B/M	Density LB/G	Volume BBL	CMT_AN_PRES PSI	Message	
06/13/2014	22:23:35	98	3.9	8.46	14.8	0		
06/13/2014	22:24:35	129	4.0	8.40	18.7	0		
06/13/2014	22:25:35	-6	0.0	8.38	21.9	0		
06/13/2014	22:26:35	14	0.0	8.38	21.9	0		
06/13/2014	22:27:35	13	0.0	8.38	21.9	0		
06/13/2014	22:28:35	13	0.0	8.37	21.9	0		
06/13/2014	22:29:35	44	0.9	8.37	21.9	0		
06/13/2014	22:29:56	38	1.9	8.39	22.4	0	End Washup	
06/13/2014	22:30:00	24	1.9	8.40	0.1	0	Start D801 Water	
06/13/2014	22:30:35	20	1.9	8.35	1.2	0		
06/13/2014	22:31:35	5	0.0	8.36	2.3	0		
06/13/2014	22:32:12	3	0.0	8.36	2.6	0	Drop Top Plug	
06/13/2014	22:32:13	4	0.0	8.36	2.6	0	Start Displacement	
06/13/2014	22:32:15	3	0.0	8.36	2.6	0	Drop Ball	
06/13/2014	22:32:35	5	0.0	8.36	2.6	0		
06/13/2014	22:32:55	156	3.2	8.36	3.0	0	Reset Total, Vol = 2.97 bbl	
06/13/2014	22:33:35	5	0.0	8.36	1.3	0		
06/13/2014	22:34:35	218	5.8	8.36	4.7	0		
06/13/2014	22:35:20	383	7.2	8.34	9.8	0	End 10 BBL D801 Water	
06/13/2014	22:35:35	381	7.2	8.34	11.6	0		
06/13/2014	22:35:40	534	7.2	8.34	12.2	0	Start Pumping Brine	
06/13/2014	22:36:35	1204	7.3	8.87	18.5	0		
06/13/2014	22:37:35	1303	7.3	9.66	25.7	0		
06/13/2014	22:38:35	1491	7.3	9.79	33.0	0		
06/13/2014	22:39:35	805	4.9	9.82	40.0	0		
06/13/2014	22:40:35	1618	7.0	9.84	46.7	0		
06/13/2014	22:41:35	968	5.2	9.84	53.4	0		
06/13/2014	22:42:35	1521	6.5	9.84	59.7	0		
06/13/2014	22:43:35	1189	5.1	9.84	65.3	0		
06/13/2014	22:44:35	1259	5.1	9.84	70.4	0		
06/13/2014	22:45:35	1315	0.0	9.86	75.1	0		
06/13/2014	22:46:35	1476	6.2	9.85	79.9	0		
06/13/2014	22:47:35	1552	5.6	9.85	86.3	0		
06/13/2014	22:48:35	1608	6.1	9.86	91.9	0		
06/13/2014	22:49:35	1426	5.4	9.85	97.9	0		
06/13/2014	22:50:35	1872	6.2	9.86	103.8	0		
06/13/2014	22:51:35	1739	6.2	9.85	109.9	0		
06/13/2014	22:52:35	1859	6.2	9.82	116.1	0		
06/13/2014	22:53:35	1803	6.2	9.84	122.3	0		
06/13/2014	22:54:35	1786	6.2	9.85	128.5	0		
06/13/2014	22:55:35	1929	6.1	9.84	134.8	0		
06/13/2014	22:56:35	1972	6.0	9.82	140.9	0		
06/13/2014	22:57:35	2018	6.1	9.84	146.9	0		
06/13/2014	22:58:35	1846	5.1	9.84	152.7	0		
06/13/2014	22:59:35	2148	6.2	9.84	155.9	0		
06/13/2014	23:00:35	1958	5.9	9.83	162.0	0		
06/13/2014	23:01:35	1988	5.8	9.83	167.8	0		
06/13/2014	23:02:35	1702	3.6	9.83	172.0	0		
06/13/2014	23:03:35	1904	3.4	8.51	175.6	0		
06/13/2014	23:04:35	1724	3.4	8.42	179.1	0		
06/13/2014	23:05:35	1645	2.0	8.40	181.3	0		
06/13/2014	23:06:35	1675	2.0	8.39	183.3	0		
06/13/2014	23:07:35	2294	0.0	8.39	184.8	0		
06/13/2014	23:08:35	2356	0.0	8.39	184.8	0		

Well			Field		Job Start	Customer	Job Number
Bohrer 2E-19H 2E-19H			DJ		Jun/13/2014	Encana	C459-02798
Date	Time 24-hr clock	Treating Pressure PSI	Flow Rate B/M	Density LB/G	Volume BBL	CMT_AN_PRES PSI	Message
06/13/2014	23:10:08	2402	0.0	8.39	184.8	0	Bump Top Plug
06/13/2014	23:10:09	2402	0.0	8.39	184.8	0	End Displacement
06/13/2014	23:10:11	2404	0.0	8.39	184.8	0	Reset Total, Vol = 168 bbl
06/13/2014	23:10:35	2417	0.0	8.39	0.0	0	
06/13/2014	23:11:35	2446	0.0	8.39	0.0	0	
06/13/2014	23:12:35	2473	0.0	8.39	0.0	0	
06/13/2014	23:13:35	2497	0.0	8.39	0.0	0	
06/13/2014	23:14:35	2520	0.0	8.39	0.0	0	
06/13/2014	23:15:35	2541	0.0	8.39	0.0	0	
06/13/2014	23:16:35	2563	0.0	8.39	0.0	0	
06/13/2014	23:17:35	2582	0.0	8.39	0.0	0	
06/13/2014	23:18:35	2600	0.0	8.39	0.0	0	
06/13/2014	23:19:35	2199	0.0	8.39	0.0	0	
06/13/2014	23:20:35	3	0.0	8.39	0.0	0	
06/13/2014	23:20:53	3	0.0	8.39	0.0	0	Floats Hold, 2 Bbl Back
06/13/2014	23:21:35	3	0.0	8.39	0.0	0	
06/13/2014	23:22:35	3	0.0	8.39	0.0	0	
06/13/2014	23:23:35	3	0.0	8.39	0.0	0	
06/13/2014	23:24:35	2	0.0	8.39	0.0	0	

Post Job Summary

Average Pump Rates, bbl/min					Volume of Fluid Injected, bbl				
Slurry 5.0	N2	Mud	Maximum Rate 11.7	Total Slurry 123.4	Mud 0.0	Spacer 40.0	N2		
Treating Pressure Summary, psi					Breakdown Fluid				
Maximum 4982	Final 2	Average 1049	Bump Plug to 2300	Breakdown	Type	Volume bbl	Density lb/gal		
Avg. N2 Percent %		Designed Slurry Volume 119.9 bbl		Displacement 168.0 bbl		Mix Water Temp 70 degF			
						Cement Circulated to Surface? <input type="checkbox"/>			
						Washed Thru Perfs <input type="checkbox"/>			
Customer or Authorized Representative Mike Quintana			Schlumberger Supervisor Ryan Drilling			Circulation Lost <input type="checkbox"/>	Job Completed <input checked="" type="checkbox"/>		
						-	-		