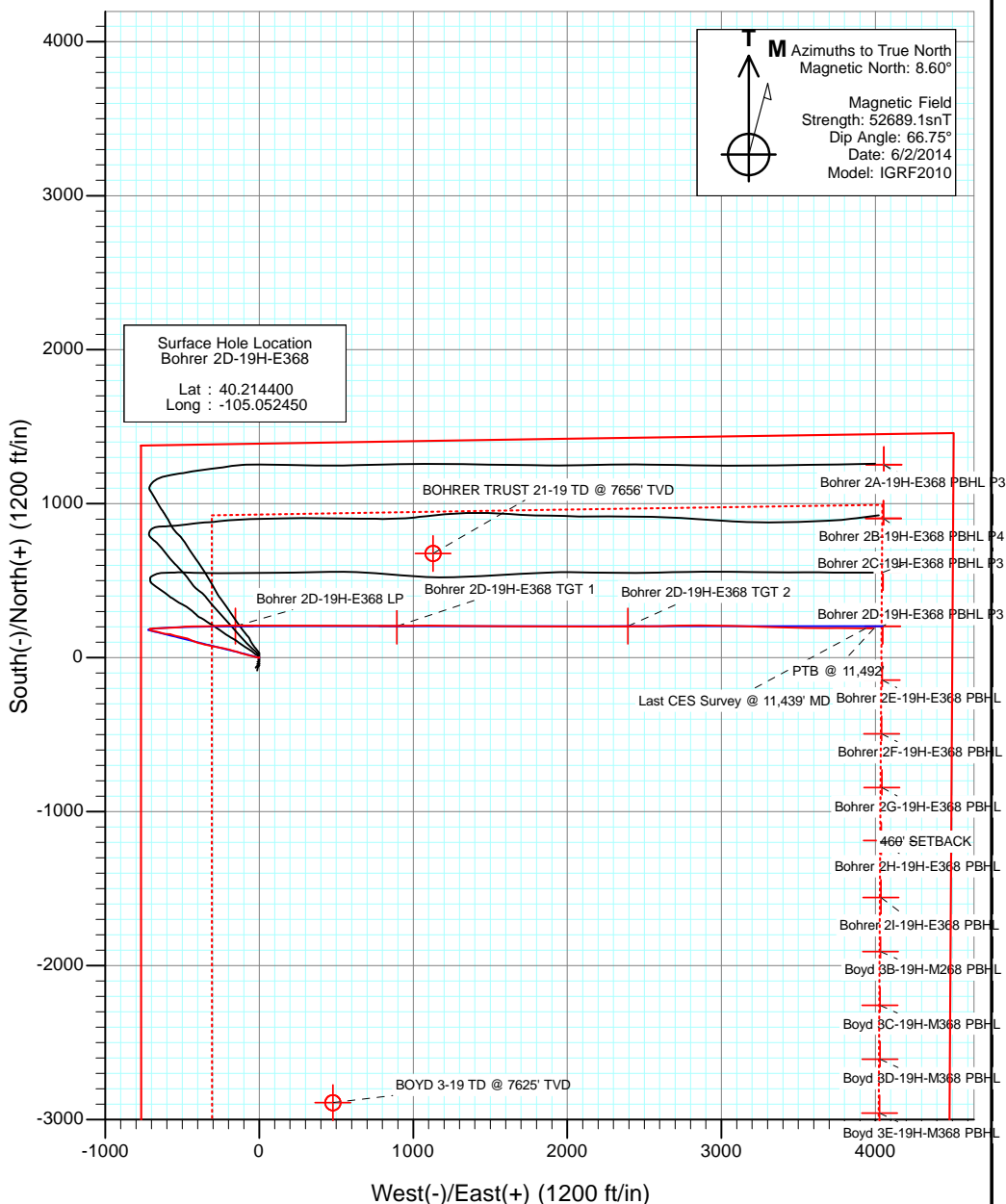
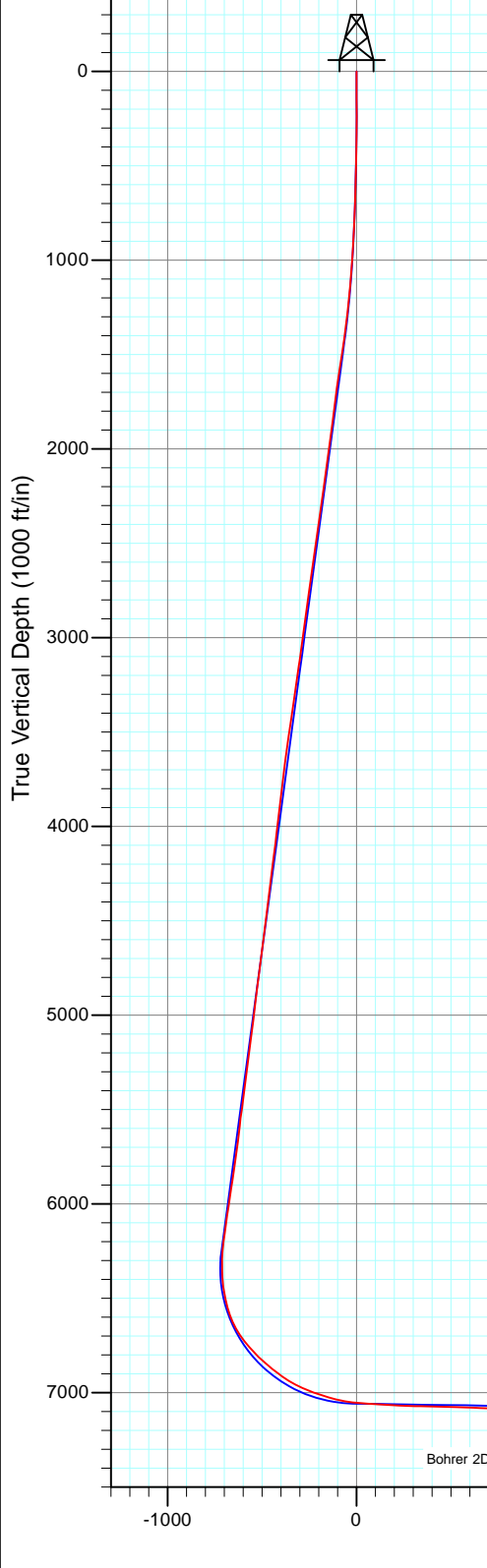




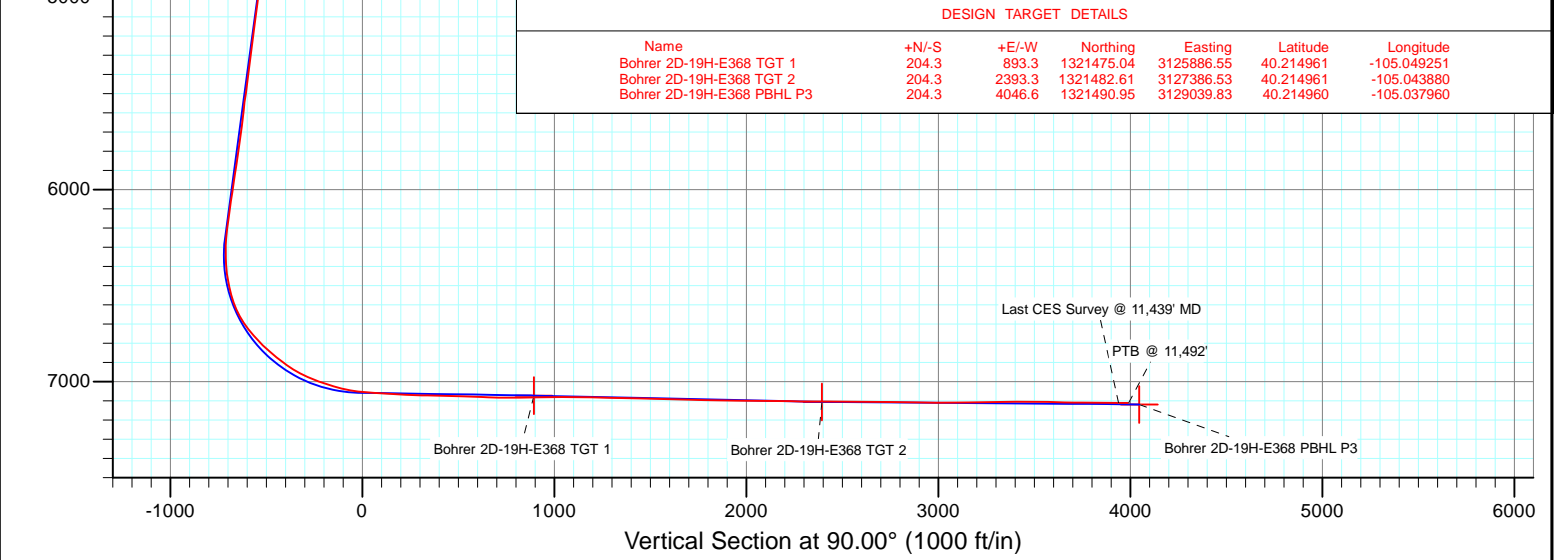
Project: DJ Wattenberg  
 Site: S19-T3N-R68W (Bohrer)  
 Well: Bohrер 2D-19H-E368  
 Wellbore: Hz  
 Design: FINAL



FINAL  
 Bohrер 2D-19H-E368  
 314155 145123; 316855 145168LR  
 32' KB @ 5091.0ft (Patterson 326)  
 Ground Elevation @ 5059.0  
 North American Datum 1983  
 Well Bohrер 2D-19H-E368, True North

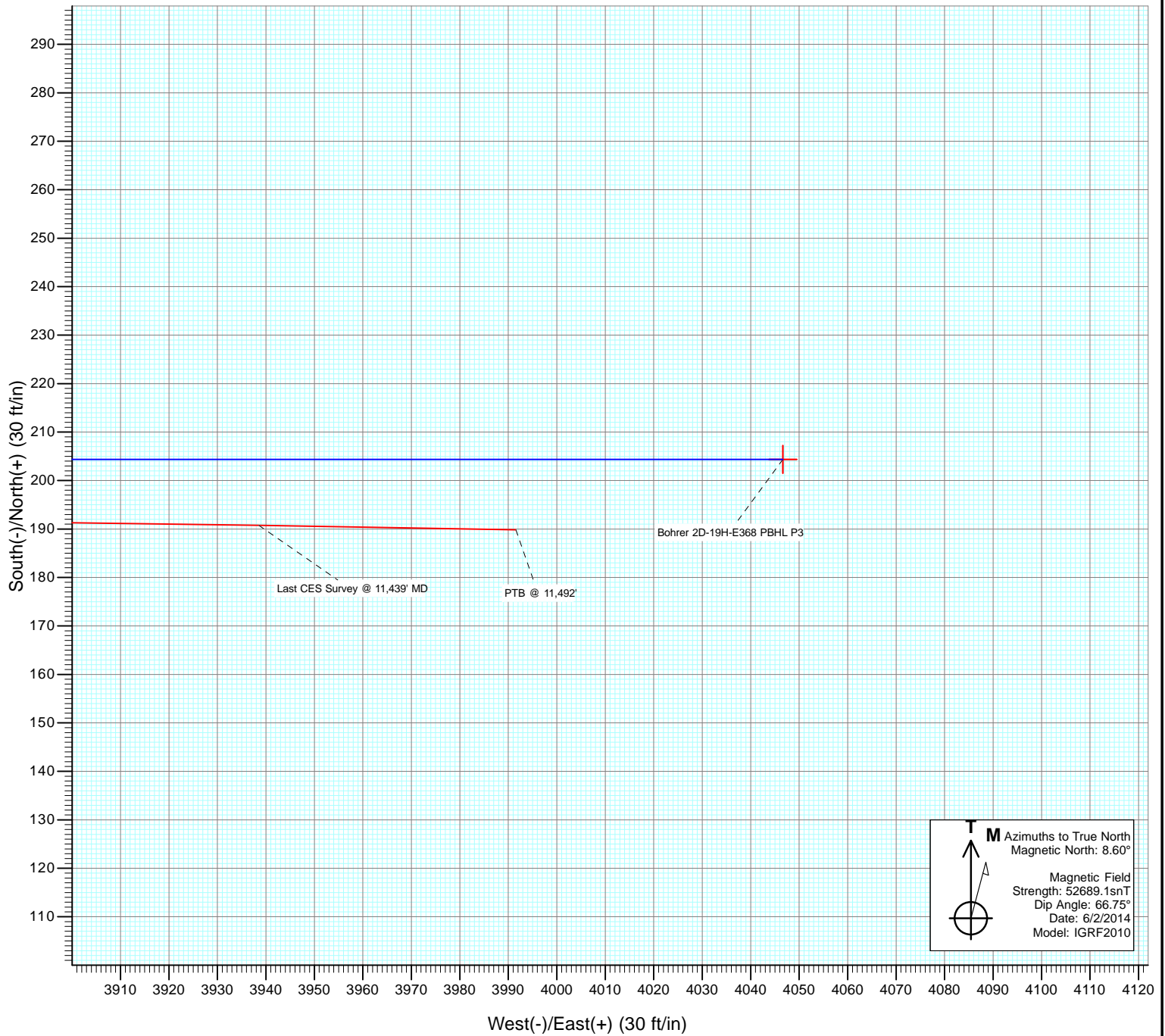


DESIGN TARGET DETAILS						
Name	+N/-S	+E/-W	Northing	Easting	Latitude	Longitude
Bohrer 2D-19H-E368 TGT 1	204.3	893.3	1321475.04	3125886.55	40.214961	-105.049251
Bohrer 2D-19H-E368 TGT 2	204.3	2393.3	1321482.61	3127386.53	40.214961	-105.043880
Bohrer 2D-19H-E368 PBHL P3	204.3	4046.6	1321490.95	3129039.83	40.214960	-105.037960





Project: DJ Wattenberg  
Site: S19-T3N-R68W (Bohrer)  
Well: Bohrer 2D-19H-E368  
Wellbore: Hz  
Design: FINAL



# Cathedral Energy Services

## Survey Report

<b>Company:</b>	EnCana Oil & Gas (USA) Inc	<b>Local Co-ordinate Reference:</b>	Well Bohrer 2D-19H-E368
<b>Project:</b>	DJ Wattenberg	<b>TVD Reference:</b>	32' KB @ 5091.0ft (Patterson 326)
<b>Site:</b>	S19-T3N-R68W (Bohrer)	<b>MD Reference:</b>	32' KB @ 5091.0ft (Patterson 326)
<b>Well:</b>	Bohrer 2D-19H-E368	<b>North Reference:</b>	True
<b>Wellbore:</b>	Hz	<b>Survey Calculation Method:</b>	Minimum Curvature
<b>Design:</b>	FINAL	<b>Database:</b>	USA EDM 5000 Multi Users DB

<b>Project</b>	DJ Wattenberg		
<b>Map System:</b>	US State Plane 1983	<b>System Datum:</b>	Mean Sea Level
<b>Geo Datum:</b>	North American Datum 1983		
<b>Map Zone:</b>	Colorado Northern Zone		

Site		S19-T3N-R68W (Bohrer)			
Site Position:		Northing:	1,318,413.14 ft	Latitude:	40.206570
From:	Lat/Long	Easting:	3,124,860.64 ft	Longitude:	-105.052980
Position Uncertainty:	0.0 ft	Slot Radius:	13.200 in	Grid Convergence:	0.29 °

Well	Bohrer 2D-19H-E368					
Well Position	+N/-S	0.0 ft	Northing:	1,321,266.18 ft	Latitude:	40.214400
	+E/-W	0.0 ft	Easting:	3,124,994.28 ft	Longitude:	-105.052450
Position Uncertainty		0.0 ft	Wellhead Elevation:	ft	Ground Level:	5,059.0 ft

<b>Wellbore</b>	Hz				
<b>Magnetics</b>	<b>Model Name</b>	<b>Sample Date</b>	<b>Declination (°)</b>	<b>Dip Angle (°)</b>	<b>Field Strength (nT)</b>
	IGRF2010	6/2/2014	8.60	66.75	52,689

<b>Design</b>	FINAL				
<b>Audit Notes:</b>					
<b>Version:</b>	1.0	<b>Phase:</b>	ACTUAL	<b>Tie On Depth:</b>	0.0
<b>Vertical Section:</b>	<b>Depth From (TVD)</b>	<b>+N/-S (ft)</b>	<b>+E/-W (ft)</b>	<b>Direction (°)</b>	
	0.0	0.0	0.0	90.00	

<b>Survey Program</b>	<b>Date</b>	6/5/2014			
<b>From (ft)</b>	<b>To (ft)</b>	<b>Survey (Wellbore)</b>	<b>Tool Name</b>	<b>Description</b>	
145.0	11,492.0	Survey #1 (Hz)	Geolink MWD	Geolink MWD	

<b>Survey</b>										
<b>Measured Depth (ft)</b>	<b>Inclination (°)</b>	<b>Azimuth (°)</b>	<b>Vertical Depth (ft)</b>	<b>+N/-S (ft)</b>	<b>+E/-W (ft)</b>	<b>Vertical Section (ft)</b>	<b>Dogleg Rate (°/100ft)</b>	<b>Build Rate (°/100ft)</b>	<b>Formations / Comments</b>	
0.0	0.00	0.00	0.0	0.0	0.0	0.0	0.00	0.00		
145.0	1.20	34.40	145.0	1.3	0.9	0.9	0.83	0.83		
239.0	0.30	6.20	239.0	2.3	1.4	1.4	1.01	-0.96		
334.0	0.70	242.20	334.0	2.3	1.0	1.0	0.95	0.42		
428.0	1.40	225.40	428.0	1.2	-0.4	-0.4	0.81	0.74		
523.0	1.80	237.30	522.9	-0.4	-2.5	-2.5	0.55	0.42		
617.0	2.10	265.10	616.9	-1.4	-5.4	-5.4	1.04	0.32		
712.0	1.50	289.30	711.8	-1.1	-8.3	-8.3	1.01	-0.63		
806.0	2.80	298.60	805.8	0.4	-11.5	-11.5	1.43	1.38		
843.0	3.10	292.60	842.7	1.2	-13.2	-13.2	1.16	0.81		
932.0	3.50	287.10	931.6	3.0	-18.0	-18.0	0.57	0.45		
1,027.0	4.60	281.30	1,026.3	4.6	-24.5	-24.5	1.23	1.16		
1,121.0	5.50	282.40	1,120.0	6.3	-32.6	-32.6	0.96	0.96		

# Cathedral Energy Services

## Survey Report

<b>Company:</b>	EnCana Oil & Gas (USA) Inc	<b>Local Co-ordinate Reference:</b>	Well Bohrer 2D-19H-E368
<b>Project:</b>	DJ Wattenberg	<b>TVD Reference:</b>	32' KB @ 5091.0ft (Patterson 326)
<b>Site:</b>	S19-T3N-R68W (Bohrer)	<b>MD Reference:</b>	32' KB @ 5091.0ft (Patterson 326)
<b>Well:</b>	Bohrer 2D-19H-E368	<b>North Reference:</b>	True
<b>Wellbore:</b>	Hz	<b>Survey Calculation Method:</b>	Minimum Curvature
<b>Design:</b>	FINAL	<b>Database:</b>	USA EDM 5000 Multi Users DB

Survey									
Measured Depth (ft)	Inclination (°)	Azimuth (°)	Vertical Depth (ft)	+N/-S (ft)	+E/-W (ft)	Vertical Section (ft)	Dogleg Rate (°/100ft)	Build Rate (°/100ft)	Formations / Comments
1,216.0	5.30	288.00	1,214.5	8.6	-41.3	-41.3	0.59	-0.21	
1,311.0	6.80	282.50	1,309.0	11.2	-50.9	-50.9	1.69	1.58	
1,406.0	8.70	280.90	1,403.1	13.7	-63.5	-63.5	2.01	2.00	
1,498.0	8.60	286.60	1,494.1	17.0	-76.9	-76.9	0.94	-0.11	
1,590.0	8.70	282.60	1,585.0	20.5	-90.3	-90.3	0.66	0.11	
1,682.0	8.00	288.70	1,676.1	24.1	-103.1	-103.1	1.23	-0.76	
1,775.0	8.40	284.70	1,768.1	27.9	-115.8	-115.8	0.75	0.43	
1,867.0	7.60	291.30	1,859.2	31.8	-128.0	-128.0	1.32	-0.87	
1,960.0	7.70	290.10	1,951.4	36.2	-139.6	-139.6	0.20	0.11	
2,053.0	7.70	284.80	2,043.6	39.9	-151.5	-151.5	0.76	0.00	
2,145.0	7.70	281.60	2,134.7	42.7	-163.5	-163.5	0.47	0.00	
2,238.0	8.70	291.30	2,226.8	46.5	-176.1	-176.1	1.83	1.08	
2,331.0	8.30	287.40	2,318.8	51.1	-189.1	-189.1	0.75	-0.43	
2,423.0	8.10	283.70	2,409.8	54.6	-201.7	-201.7	0.61	-0.22	
2,515.0	7.70	278.20	2,501.0	57.0	-214.1	-214.1	0.93	-0.43	
2,608.0	8.60	282.00	2,593.0	59.4	-227.1	-227.1	1.13	0.97	
2,700.0	8.40	278.50	2,684.0	61.8	-240.4	-240.4	0.60	-0.22	
2,792.0	8.90	287.10	2,775.0	64.9	-253.9	-253.9	1.51	0.54	
2,887.0	8.20	281.80	2,868.9	68.4	-267.5	-267.5	1.11	-0.74	
2,981.0	7.80	277.00	2,962.0	70.6	-280.4	-280.4	0.83	-0.43	
3,076.0	6.80	274.50	3,056.2	71.8	-292.4	-292.4	1.10	-1.05	
3,171.0	8.80	285.00	3,150.3	74.1	-305.1	-305.1	2.58	2.11	
3,266.0	8.40	283.30	3,244.3	77.6	-318.8	-318.8	0.50	-0.42	
3,361.0	8.40	281.60	3,338.3	80.6	-332.4	-332.4	0.26	0.00	
3,455.0	8.30	277.50	3,431.3	82.8	-345.8	-345.8	0.64	-0.11	
3,550.0	8.50	290.30	3,525.3	86.2	-359.2	-359.2	1.98	0.21	
3,645.0	8.00	284.90	3,619.3	90.3	-372.2	-372.2	0.97	-0.53	
3,740.0	7.50	281.90	3,713.4	93.3	-384.7	-384.7	0.68	-0.53	
3,834.0	6.90	278.20	3,806.7	95.4	-396.3	-396.3	0.81	-0.64	
3,929.0	7.20	296.70	3,901.0	98.8	-407.2	-407.2	2.40	0.32	
4,024.0	6.70	292.80	3,995.3	103.7	-417.6	-417.6	0.72	-0.53	
4,119.0	8.20	293.50	4,089.5	108.5	-429.0	-429.0	1.58	1.58	
4,214.0	7.90	292.30	4,183.5	113.7	-441.2	-441.2	0.36	-0.32	
4,308.0	7.60	291.70	4,276.7	118.4	-453.0	-453.0	0.33	-0.32	
4,403.0	7.60	290.50	4,370.8	123.0	-464.7	-464.7	0.17	0.00	
4,498.0	6.80	282.10	4,465.1	126.3	-476.1	-476.1	1.39	-0.84	
4,592.0	8.00	285.80	4,558.3	129.3	-487.8	-487.8	1.37	1.28	
4,687.0	7.50	280.90	4,652.4	132.3	-500.3	-500.3	0.87	-0.53	
4,782.0	6.90	279.00	4,746.7	134.3	-512.0	-512.0	0.68	-0.63	
4,877.0	7.70	286.80	4,840.9	137.1	-523.7	-523.7	1.34	0.84	
4,972.0	6.90	282.60	4,935.1	140.2	-535.4	-535.4	1.01	-0.84	
5,067.0	7.30	283.40	5,029.4	142.8	-546.8	-546.8	0.43	0.42	
5,162.0	8.00	288.70	5,123.6	146.3	-559.0	-559.0	1.05	0.74	
5,257.0	6.80	286.10	5,217.8	150.0	-570.6	-570.6	1.31	-1.26	
5,351.0	8.20	277.50	5,311.0	152.4	-582.6	-582.6	1.91	1.49	
5,446.0	6.70	270.50	5,405.2	153.3	-594.9	-594.9	1.84	-1.58	
5,540.0	8.10	277.20	5,498.4	154.2	-606.9	-606.9	1.75	1.49	
5,635.0	6.50	283.30	5,592.6	156.3	-618.8	-618.8	1.87	-1.68	
5,730.0	7.10	285.50	5,686.9	159.1	-629.7	-629.7	0.69	0.63	
5,825.0	9.50	286.00	5,780.9	162.8	-642.9	-642.9	2.53	2.53	
5,920.0	7.90	282.80	5,874.8	166.4	-656.8	-656.8	1.76	-1.68	
6,014.0	9.50	283.40	5,967.8	169.7	-670.6	-670.6	1.70	1.70	
6,108.0	7.80	279.60	6,060.7	172.5	-684.5	-684.5	1.91	-1.81	

# Cathedral Energy Services

## Survey Report

<b>Company:</b>	EnCana Oil & Gas (USA) Inc	<b>Local Co-ordinate Reference:</b>	Well Bohrer 2D-19H-E368
<b>Project:</b>	DJ Wattenberg	<b>TVD Reference:</b>	32' KB @ 5091.0ft (Patterson 326)
<b>Site:</b>	S19-T3N-R68W (Bohrer)	<b>MD Reference:</b>	32' KB @ 5091.0ft (Patterson 326)
<b>Well:</b>	Bohrer 2D-19H-E368	<b>North Reference:</b>	True
<b>Wellbore:</b>	Hz	<b>Survey Calculation Method:</b>	Minimum Curvature
<b>Design:</b>	FINAL	<b>Database:</b>	USA EDM 5000 Multi Users DB

Survey									
Measured Depth (ft)	Inclination (°)	Azimuth (°)	Vertical Depth (ft)	+N/-S (ft)	+E/-W (ft)	Vertical Section (ft)	Dogleg Rate (°/100ft)	Build Rate (°/100ft)	Formations / Comments
6,203.0	8.10	283.30	6,154.8	175.1	-697.3	-697.3	0.62	0.32	
6,250.0	7.30	287.20	6,201.4	176.8	-703.4	-703.4	2.03	-1.70	
6,298.0	6.50	300.60	6,249.0	179.1	-708.7	-708.7	3.73	-1.67	
6,345.0	5.10	345.40	6,295.8	182.5	-711.5	-711.5	9.79	-2.98	
6,393.0	2.90	17.70	6,343.7	185.7	-711.7	-711.7	6.39	-4.58	
6,440.0	4.20	70.70	6,390.6	187.4	-709.7	-709.7	7.18	2.77	
6,488.0	7.00	83.70	6,438.4	188.3	-705.1	-705.1	6.37	5.83	
6,535.0	10.70	82.40	6,484.8	189.2	-697.9	-697.9	7.88	7.87	
6,583.0	14.20	85.20	6,531.7	190.3	-687.6	-687.6	7.40	7.29	
6,630.0	18.60	90.20	6,576.7	190.7	-674.4	-674.4	9.82	9.36	
6,678.0	23.50	88.80	6,621.5	190.9	-657.2	-657.2	10.26	10.21	
6,725.0	29.50	87.40	6,663.6	191.6	-636.2	-636.2	12.83	12.77	
6,773.0	34.70	88.40	6,704.2	192.5	-610.7	-610.7	10.89	10.83	
6,820.0	39.60	87.20	6,741.7	193.6	-582.4	-582.4	10.54	10.43	
6,868.0	42.70	86.40	6,777.8	195.4	-550.9	-550.9	6.55	6.46	
6,915.0	46.10	84.90	6,811.4	197.9	-518.1	-518.1	7.57	7.23	
6,963.0	48.70	86.10	6,843.9	200.7	-482.8	-482.8	5.72	5.42	
7,010.0	50.90	88.40	6,874.2	202.4	-447.0	-447.0	5.99	4.68	
7,057.0	53.60	89.50	6,903.0	203.1	-409.8	-409.8	6.04	5.74	
7,104.0	56.90	89.50	6,929.8	203.4	-371.2	-371.2	7.02	7.02	
7,152.0	61.90	88.00	6,954.2	204.3	-329.9	-329.9	10.76	10.42	
7,199.0	66.20	87.70	6,974.8	205.9	-287.7	-287.7	9.17	9.15	
7,247.0	69.10	88.80	6,993.0	207.2	-243.4	-243.4	6.40	6.04	
7,294.0	71.40	88.90	7,008.9	208.1	-199.1	-199.1	4.90	4.89	
7,342.0	73.20	89.50	7,023.5	208.8	-153.4	-153.4	3.93	3.75	
7,389.0	75.60	91.00	7,036.1	208.6	-108.1	-108.1	5.96	5.11	
7,437.0	79.30	91.60	7,046.6	207.5	-61.3	-61.3	7.80	7.71	
7,476.0	84.50	91.00	7,052.0	206.6	-22.7	-22.7	13.42	13.33	
7,554.0	85.90	88.90	7,058.6	206.7	55.0	55.0	3.23	1.79	
7,649.0	87.30	89.60	7,064.2	207.9	149.8	149.8	1.65	1.47	
7,743.0	86.50	89.30	7,069.3	208.8	243.7	243.7	0.91	-0.85	
7,839.0	89.10	90.60	7,073.0	208.9	339.6	339.6	3.03	2.71	
7,934.0	88.90	91.00	7,074.6	207.6	434.6	434.6	0.47	-0.21	
8,028.0	88.20	90.60	7,077.0	206.3	528.5	528.5	0.86	-0.74	
8,123.0	87.20	90.00	7,080.8	205.8	623.4	623.4	1.23	-1.05	
8,217.0	89.50	90.00	7,083.5	205.8	717.4	717.4	2.45	2.45	
8,312.0	90.90	90.30	7,083.2	205.5	812.4	812.4	1.51	1.47	
8,407.0	90.00	89.00	7,082.5	206.1	907.4	907.4	1.66	-0.95	
8,502.0	90.70	89.60	7,081.9	207.3	1,002.4	1,002.4	0.97	0.74	
8,596.0	89.80	89.90	7,081.5	207.7	1,096.4	1,096.4	1.01	-0.96	
8,691.0	89.10	90.70	7,082.4	207.2	1,191.4	1,191.4	1.12	-0.74	
8,786.0	88.40	90.60	7,084.4	206.1	1,286.3	1,286.3	0.74	-0.74	
8,880.0	89.20	91.30	7,086.4	204.6	1,380.3	1,380.3	1.13	0.85	
8,975.0	88.70	90.60	7,088.2	203.0	1,475.3	1,475.3	0.91	-0.53	
9,070.0	87.90	88.90	7,091.0	203.4	1,570.2	1,570.2	1.98	-0.84	
9,164.0	88.40	89.60	7,094.0	204.6	1,664.2	1,664.2	0.91	0.53	
9,259.0	89.10	90.40	7,096.1	204.6	1,759.2	1,759.2	1.12	0.74	
9,353.0	88.70	90.60	7,097.9	203.8	1,853.1	1,853.1	0.48	-0.43	
9,448.0	89.60	90.70	7,099.3	202.7	1,948.1	1,948.1	0.95	0.95	
9,543.0	89.10	90.50	7,100.4	201.7	2,043.1	2,043.1	0.57	-0.53	
9,638.0	89.50	90.50	7,101.5	200.9	2,138.1	2,138.1	0.42	0.42	
9,733.0	88.90	89.80	7,102.9	200.7	2,233.1	2,233.1	0.97	-0.63	
9,828.0	90.10	89.20	7,103.7	201.5	2,328.1	2,328.1	1.41	1.26	

# Cathedral Energy Services

## Survey Report

<b>Company:</b>	EnCana Oil & Gas (USA) Inc	<b>Local Co-ordinate Reference:</b>	Well Bohrer 2D-19H-E368
<b>Project:</b>	DJ Wattenberg	<b>TVD Reference:</b>	32' KB @ 5091.0ft (Patterson 326)
<b>Site:</b>	S19-T3N-R68W (Bohrer)	<b>MD Reference:</b>	32' KB @ 5091.0ft (Patterson 326)
<b>Well:</b>	Bohrer 2D-19H-E368	<b>North Reference:</b>	True
<b>Wellbore:</b>	Hz	<b>Survey Calculation Method:</b>	Minimum Curvature
<b>Design:</b>	FINAL	<b>Database:</b>	USA EDM 5000 Multi Users DB

Survey									
Measured Depth (ft)	Inclination (°)	Azimuth (°)	Vertical Depth (ft)	+N/-S (ft)	+E/-W (ft)	Vertical Section (ft)	Dogleg Rate (°/100ft)	Build Rate (°/100ft)	Formations / Comments
9,922.0	89.80	89.60	7,103.8	202.5	2,422.1	2,422.1	0.53	-0.32	
10,017.0	89.10	89.20	7,104.7	203.5	2,517.1	2,517.1	0.85	-0.74	
10,112.0	90.00	88.90	7,105.4	205.0	2,612.0	2,612.0	1.00	0.95	
10,207.0	89.10	87.40	7,106.2	208.1	2,707.0	2,707.0	1.84	-0.95	
10,302.0	89.10	90.00	7,107.7	210.3	2,801.9	2,801.9	2.74	0.00	
10,397.0	89.50	91.80	7,108.8	208.8	2,896.9	2,896.9	1.94	0.42	
10,491.0	88.50	90.90	7,110.5	206.6	2,990.9	2,990.9	1.43	-1.06	
10,586.0	90.90	91.10	7,111.0	204.9	3,085.9	3,085.9	2.54	2.53	
10,682.0	91.80	91.90	7,108.7	202.4	3,181.8	3,181.8	1.25	0.94	
10,776.0	91.50	91.70	7,106.0	199.4	3,275.7	3,275.7	0.38	-0.32	
10,871.0	89.70	91.40	7,105.0	196.9	3,370.7	3,370.7	1.92	-1.89	
10,966.0	89.30	91.50	7,105.8	194.5	3,465.6	3,465.6	0.43	-0.42	
11,061.0	89.40	90.30	7,106.9	193.0	3,560.6	3,560.6	1.27	0.11	
11,155.0	88.70	90.60	7,108.5	192.2	3,654.6	3,654.6	0.81	-0.74	
11,250.0	89.80	89.60	7,109.7	192.1	3,749.6	3,749.6	1.56	1.16	
11,345.0	89.50	90.50	7,110.3	192.0	3,844.6	3,844.6	1.00	-0.32	
11,439.0	89.60	91.00	7,111.0	190.8	3,938.5	3,938.5	0.54	0.11	Last CES Survey @ 11,439' MD
11,492.0	89.60	91.00	7,111.4	189.8	3,991.5	3,991.5	0.00	0.00	PTB @ 11,492'

Targets									
Target Name	Dip Angle (°)	Dip Dir. (°)	TVD (ft)	+N/-S (ft)	+E/-W (ft)	Northing (ft)	Easting (ft)	Latitude	Longitude
Bohrer 2D-19H-E368 LP	0.00	0.00	7,056.0	204.3	-154.4	1,321,469.75	3,124,838.86	40.214961	-105.053003
- actual wellpath misses target center by 31.8ft at 7349.8ft MD (7025.7 TVD, 208.8 N, -145.9 E)									
- Point									
Bohrer 2D-19H-E368 PE	0.00	0.00	7,076.0	204.3	4,046.6	1,321,490.95	3,129,039.83	40.214960	-105.037960
- actual wellpath misses target center by 67.1ft at 11492.0ft MD (7111.4 TVD, 189.8 N, 3991.5 E)									
- Point									
Bohrer 2D-19H-E368 PE	0.00	0.00	7,119.0	204.3	4,046.6	1,321,490.95	3,129,039.83	40.214960	-105.037960
- actual wellpath misses target center by 57.5ft at 11492.0ft MD (7111.4 TVD, 189.8 N, 3991.5 E)									
- Point									
Bohrer 2D-19H-E368 TC	0.00	0.00	7,073.0	204.3	893.3	1,321,475.04	3,125,886.55	40.214961	-105.049251
- actual wellpath misses target center by 9.6ft at 8393.0ft MD (7082.5 TVD, 205.9 N, 893.4 E)									
- Point									
Bohrer 2D-19H-E368 TC	0.00	0.00	7,106.0	204.3	2,393.3	1,321,482.61	3,127,386.53	40.214961	-105.043880
- actual wellpath misses target center by 3.1ft at 9893.3ft MD (7103.7 TVD, 202.2 N, 2393.3 E)									
- Point									

Design Annotations					
Measured Depth (ft)	Vertical Depth (ft)	Local Coordinates			
		+N/-S (ft)	+E/-W (ft)	Comment	
11,439.0	7,111.0	190.8	3,938.5	Last CES Survey @ 11,439' MD	
11,492.0	7,111.4	189.8	3,991.5	PTB @ 11,492'	

Checked By: \_\_\_\_\_ Approved By: \_\_\_\_\_ Date: \_\_\_\_\_

# **EnCana Oil & Gas (USA) Inc**

**DJ Wattenberg**

**S19-T3N-R68W (Bohrer)**

**Bohrer 2D-19H-E368**

**Hz**

**Design: FINAL**

## **Survey Report - Geographic**

**05 June, 2014**

# Cathedral Energy Services

## Survey Report - Geographic

<b>Company:</b>	EnCana Oil & Gas (USA) Inc	<b>Local Co-ordinate Reference:</b>	Well Bohrer 2D-19H-E368
<b>Project:</b>	DJ Wattenberg	<b>TVD Reference:</b>	32' KB @ 5091.0ft (Patterson 326)
<b>Site:</b>	S19-T3N-R68W (Bohrer)	<b>MD Reference:</b>	32' KB @ 5091.0ft (Patterson 326)
<b>Well:</b>	Bohrer 2D-19H-E368	<b>North Reference:</b>	True
<b>Wellbore:</b>	Hz	<b>Survey Calculation Method:</b>	Minimum Curvature
<b>Design:</b>	FINAL	<b>Database:</b>	USA EDM 5000 Multi Users DB

<b>Project</b>	DJ Wattenberg		
<b>Map System:</b>	US State Plane 1983	<b>System Datum:</b>	Mean Sea Level
<b>Geo Datum:</b>	North American Datum 1983		
<b>Map Zone:</b>	Colorado Northern Zone		

Site	S19-T3N-R68W (Bohrer)				
Site Position:		Northing:	1,318,413.14 ft	Latitude:	40.206570
From:	Lat/Long	Easting:	3,124,860.64 ft	Longitude:	-105.052980
Position Uncertainty:	0.0 ft	Slot Radius:	13.200 in	Grid Convergence:	0.29 °

Well	Bohrer 2D-19H-E368					
Well Position	+N/-S	0.0 ft	Northing:	1,321,266.18 ft	Latitude:	40.214400
	+E/-W	0.0 ft	Easting:	3,124,994.27 ft	Longitude:	-105.052450
Position Uncertainty		0.0 ft	Wellhead Elevation:	ft	Ground Level:	5,059.0 ft

<b>Wellbore</b>	Hz				
<b>Magnetics</b>	<b>Model Name</b>	<b>Sample Date</b>	<b>Declination (°)</b>	<b>Dip Angle (°)</b>	<b>Field Strength (nT)</b>
	IGRF2010	6/2/2014	8.60	66.75	52,689

<b>Design</b>	FINAL				
<b>Audit Notes:</b>					
<b>Version:</b>	1.0	<b>Phase:</b>	ACTUAL	<b>Tie On Depth:</b>	0.0
<b>Vertical Section:</b>	<b>Depth From (TVD) (ft)</b>	<b>+N/-S (ft)</b>	<b>+E/-W (ft)</b>	<b>Direction (°)</b>	
	0.0	0.0	0.0	90.00	

<b>Survey Program</b>	<b>Date</b>	6/5/2014			
<b>From (ft)</b>	<b>To (ft)</b>	<b>Survey (Wellbore)</b>	<b>Tool Name</b>	<b>Description</b>	
145.0	11,492.0	Survey #1 (Hz)	Geolink MWD	Geolink MWD	

<b>Survey</b>										
<b>Measured Depth (ft)</b>	<b>Inclination (°)</b>	<b>Azimuth (°)</b>	<b>Vertical Depth (ft)</b>	<b>+N/-S (ft)</b>	<b>+E/-W (ft)</b>	<b>Map Northing (ft)</b>	<b>Map Easting (ft)</b>	<b>Latitude</b>	<b>Longitude</b>	
0.0	0.00	0.00	0.0	0.0	0.0	1,321,266.18	3,124,994.27	40.214400	-105.052450	
145.0	1.20	34.40	145.0	1.3	0.9	1,321,267.44	3,124,995.13	40.214403	-105.052447	
239.0	0.30	6.20	239.0	2.3	1.4	1,321,268.50	3,124,995.70	40.214406	-105.052445	
334.0	0.70	242.20	334.0	2.3	1.0	1,321,268.47	3,124,995.22	40.214406	-105.052447	
428.0	1.40	225.40	428.0	1.2	-0.4	1,321,267.39	3,124,993.90	40.214403	-105.052452	
523.0	1.80	237.30	522.9	-0.4	-2.5	1,321,265.76	3,124,991.82	40.214399	-105.052459	
617.0	2.10	265.10	616.9	-1.4	-5.4	1,321,264.80	3,124,988.87	40.214396	-105.052470	
712.0	1.50	289.30	711.8	-1.1	-8.3	1,321,265.05	3,124,985.96	40.214397	-105.052480	
806.0	2.80	298.60	805.8	0.4	-11.5	1,321,266.54	3,124,982.78	40.214401	-105.052491	
843.0	3.10	292.60	842.7	1.2	-13.2	1,321,267.35	3,124,981.05	40.214403	-105.052498	
932.0	3.50	287.10	931.6	3.0	-18.0	1,321,269.05	3,124,976.23	40.214408	-105.052515	
1,027.0	4.60	281.30	1,026.3	4.6	-24.5	1,321,270.61	3,124,969.71	40.214413	-105.052538	



# Cathedral Energy Services

## Survey Report - Geographic

<b>Company:</b>	EnCana Oil & Gas (USA) Inc	<b>Local Co-ordinate Reference:</b>	Well Bohrer 2D-19H-E368
<b>Project:</b>	DJ Wattenberg	<b>TVD Reference:</b>	32' KB @ 5091.0ft (Patterson 326)
<b>Site:</b>	S19-T3N-R68W (Bohrer)	<b>MD Reference:</b>	32' KB @ 5091.0ft (Patterson 326)
<b>Well:</b>	Bohrer 2D-19H-E368	<b>North Reference:</b>	True
<b>Wellbore:</b>	Hz	<b>Survey Calculation Method:</b>	Minimum Curvature
<b>Design:</b>	FINAL	<b>Database:</b>	USA EDM 5000 Multi Users DB

Survey									
Measured Depth (ft)	Inclination (°)	Azimuth (°)	Vertical Depth (ft)	+N/-S (ft)	+E/-W (ft)	Map Northing (ft)	Map Easting (ft)	Latitude	Longitude
1,121.0	5.50	282.40	1,120.0	6.3	-32.6	1,321,272.28	3,124,961.61	40.214417	-105.052567
1,216.0	5.30	288.00	1,214.5	8.6	-41.3	1,321,274.57	3,124,952.98	40.214424	-105.052598
1,311.0	6.80	282.50	1,309.0	11.2	-50.9	1,321,277.09	3,124,943.30	40.214431	-105.052633
1,406.0	8.70	280.90	1,403.1	13.7	-63.5	1,321,279.61	3,124,930.74	40.214438	-105.052678
1,498.0	8.60	286.60	1,494.1	17.0	-76.9	1,321,282.82	3,124,917.30	40.214447	-105.052726
1,590.0	8.70	282.60	1,585.0	20.5	-90.3	1,321,286.23	3,124,903.90	40.214456	-105.052774
1,682.0	8.00	288.70	1,676.1	24.1	-103.1	1,321,289.74	3,124,891.03	40.214466	-105.052820
1,775.0	8.40	284.70	1,768.1	27.9	-115.8	1,321,293.47	3,124,878.31	40.214477	-105.052865
1,867.0	7.60	291.30	1,859.2	31.8	-128.0	1,321,297.33	3,124,866.12	40.214487	-105.052909
1,960.0	7.70	290.10	1,951.4	36.2	-139.6	1,321,301.65	3,124,854.52	40.214499	-105.052950
2,053.0	7.70	284.80	2,043.6	39.9	-151.5	1,321,305.32	3,124,842.62	40.214510	-105.052993
2,145.0	7.70	281.60	2,134.7	42.7	-163.5	1,321,308.07	3,124,830.61	40.214517	-105.053036
2,238.0	8.70	291.30	2,226.8	46.5	-176.1	1,321,311.82	3,124,817.93	40.214528	-105.053081
2,331.0	8.30	287.40	2,318.8	51.1	-189.1	1,321,316.31	3,124,804.95	40.214540	-105.053127
2,423.0	8.10	283.70	2,409.8	54.6	-201.7	1,321,319.77	3,124,792.30	40.214550	-105.053172
2,515.0	7.70	278.20	2,501.0	57.0	-214.1	1,321,322.12	3,124,779.89	40.214557	-105.053217
2,608.0	8.60	282.00	2,593.0	59.4	-227.1	1,321,324.39	3,124,766.91	40.214563	-105.053263
2,700.0	8.40	278.50	2,684.0	61.8	-240.4	1,321,326.75	3,124,753.53	40.214570	-105.053311
2,792.0	8.90	287.10	2,775.0	64.9	-253.9	1,321,329.76	3,124,740.06	40.214578	-105.053359
2,887.0	8.20	281.80	2,868.9	68.4	-267.5	1,321,333.24	3,124,726.39	40.214588	-105.053408
2,981.0	7.80	277.00	2,962.0	70.6	-280.4	1,321,335.32	3,124,713.48	40.214594	-105.053454
3,076.0	6.80	274.50	3,056.2	71.8	-292.4	1,321,336.49	3,124,701.47	40.214597	-105.053497
3,171.0	8.80	285.00	3,150.3	74.1	-305.1	1,321,338.75	3,124,688.83	40.214603	-105.053543
3,266.0	8.40	283.30	3,244.3	77.6	-318.8	1,321,342.16	3,124,675.04	40.214613	-105.053592
3,361.0	8.40	281.60	3,338.3	80.6	-332.4	1,321,345.08	3,124,661.48	40.214621	-105.053640
3,455.0	8.30	277.50	3,431.3	82.8	-345.8	1,321,347.28	3,124,648.01	40.214627	-105.053689
3,550.0	8.50	290.30	3,525.3	86.2	-359.2	1,321,350.54	3,124,634.61	40.214637	-105.053737
3,645.0	8.00	284.90	3,619.3	90.3	-372.2	1,321,354.61	3,124,621.62	40.214648	-105.053783
3,740.0	7.50	281.90	3,713.4	93.3	-384.7	1,321,357.53	3,124,609.15	40.214656	-105.053828
3,834.0	6.90	278.20	3,806.7	95.4	-396.3	1,321,359.54	3,124,597.55	40.214662	-105.053869
3,929.0	7.20	296.70	3,901.0	98.8	-407.2	1,321,362.97	3,124,586.56	40.214671	-105.053908
4,024.0	6.70	292.80	3,995.3	103.7	-417.6	1,321,367.74	3,124,576.11	40.214685	-105.053946
4,119.0	8.20	293.50	4,089.5	108.5	-429.0	1,321,372.54	3,124,564.76	40.214698	-105.053986
4,214.0	7.90	292.30	4,183.5	113.7	-441.2	1,321,377.65	3,124,552.48	40.214712	-105.054030
4,308.0	7.60	291.70	4,276.7	118.4	-453.0	1,321,382.34	3,124,540.71	40.214725	-105.054072
4,403.0	7.60	290.50	4,370.8	123.0	-464.7	1,321,386.81	3,124,528.96	40.214738	-105.054114
4,498.0	6.80	282.10	4,465.1	126.3	-476.1	1,321,390.13	3,124,517.56	40.214747	-105.054155
4,592.0	8.00	285.80	4,558.3	129.3	-487.8	1,321,393.02	3,124,505.81	40.214755	-105.054197
4,687.0	7.50	280.90	4,652.4	132.3	-500.3	1,321,395.93	3,124,493.35	40.214763	-105.054242
4,782.0	6.90	279.00	4,746.7	134.3	-512.0	1,321,397.93	3,124,481.61	40.214769	-105.054284
4,877.0	7.70	286.80	4,840.9	137.1	-523.7	1,321,400.60	3,124,469.87	40.214776	-105.054326
4,972.0	6.90	282.60	4,935.1	140.2	-535.4	1,321,403.63	3,124,458.19	40.214785	-105.054367
5,067.0	7.30	283.40	5,029.4	142.8	-546.8	1,321,406.22	3,124,446.74	40.214792	-105.054408
5,162.0	8.00	288.70	5,123.6	146.3	-559.0	1,321,409.67	3,124,434.59	40.214802	-105.054452
5,257.0	6.80	286.10	5,217.8	150.0	-570.6	1,321,413.29	3,124,422.90	40.214812	-105.054494
5,351.0	8.20	277.50	5,311.0	152.4	-582.6	1,321,415.65	3,124,410.90	40.214818	-105.054536
5,446.0	6.70	270.50	5,405.2	153.3	-594.9	1,321,416.52	3,124,398.63	40.214821	-105.054580
5,540.0	8.10	277.20	5,498.4	154.2	-606.9	1,321,417.34	3,124,386.57	40.214823	-105.054624
5,635.0	6.50	283.30	5,592.6	156.3	-618.8	1,321,419.36	3,124,374.69	40.214829	-105.054666
5,730.0	7.10	285.50	5,686.9	159.1	-629.7	1,321,422.11	3,124,363.79	40.214837	-105.054705
5,825.0	9.50	286.00	5,780.9	162.8	-642.9	1,321,425.77	3,124,350.57	40.214847	-105.054752
5,920.0	7.90	282.80	5,874.8	166.4	-656.8	1,321,429.31	3,124,336.65	40.214857	-105.054802
6,014.0	9.50	283.40	5,967.8	169.7	-670.6	1,321,432.47	3,124,322.79	40.214866	-105.054852
6,108.0	7.80	279.60	6,060.7	172.5	-684.5	1,321,435.26	3,124,308.94	40.214874	-105.054901
6,203.0	8.10	283.30	6,154.8	175.1	-697.3	1,321,437.81	3,124,296.05	40.214881	-105.054947

# Cathedral Energy Services

## Survey Report - Geographic

<b>Company:</b>	EnCana Oil & Gas (USA) Inc	<b>Local Co-ordinate Reference:</b>	Well Bohrer 2D-19H-E368
<b>Project:</b>	DJ Wattenberg	<b>TVD Reference:</b>	32' KB @ 5091.0ft (Patterson 326)
<b>Site:</b>	S19-T3N-R68W (Bohrer)	<b>MD Reference:</b>	32' KB @ 5091.0ft (Patterson 326)
<b>Well:</b>	Bohrer 2D-19H-E368	<b>North Reference:</b>	True
<b>Wellbore:</b>	Hz	<b>Survey Calculation Method:</b>	Minimum Curvature
<b>Design:</b>	FINAL	<b>Database:</b>	USA EDM 5000 Multi Users DB

Survey									
Measured Depth (ft)	Inclination (°)	Azimuth (°)	Vertical Depth (ft)	+N/-S (ft)	+E/-W (ft)	Map Northing (ft)	Map Easting (ft)	Latitude	Longitude
6,250.0	7.30	287.20	6,201.4	176.8	-703.4	1,321,439.42	3,124,289.97	40.214885	-105.054969
6,298.0	6.50	300.60	6,249.0	179.1	-708.7	1,321,441.68	3,124,284.71	40.214892	-105.054988
6,345.0	5.10	345.40	6,295.8	182.5	-711.5	1,321,445.04	3,124,281.87	40.214901	-105.054998
6,393.0	2.90	17.70	6,343.7	185.7	-711.7	1,321,448.27	3,124,281.69	40.214910	-105.054999
6,440.0	4.20	70.70	6,390.6	187.4	-709.7	1,321,449.98	3,124,283.67	40.214914	-105.054991
6,488.0	7.00	83.70	6,438.4	188.3	-705.1	1,321,450.90	3,124,288.23	40.214917	-105.054975
6,535.0	10.70	82.40	6,484.8	189.2	-697.9	1,321,451.83	3,124,295.40	40.214919	-105.054949
6,583.0	14.20	85.20	6,531.7	190.3	-687.6	1,321,452.96	3,124,305.68	40.214922	-105.054913
6,630.0	18.60	90.20	6,576.7	190.7	-674.4	1,321,453.49	3,124,318.92	40.214924	-105.054865
6,678.0	23.50	88.80	6,621.5	190.9	-657.2	1,321,453.75	3,124,336.16	40.214924	-105.054803
6,725.0	29.50	87.40	6,663.6	191.6	-636.2	1,321,454.58	3,124,357.10	40.214926	-105.054728
6,773.0	34.70	88.40	6,704.2	192.5	-610.7	1,321,455.62	3,124,382.58	40.214929	-105.054637
6,820.0	39.60	87.20	6,741.7	193.6	-582.4	1,321,456.87	3,124,410.92	40.214932	-105.054536
6,868.0	42.70	86.40	6,777.8	195.4	-550.9	1,321,458.80	3,124,442.44	40.214936	-105.054423
6,915.0	46.10	84.90	6,811.4	197.9	-518.1	1,321,461.47	3,124,475.21	40.214943	-105.054305
6,963.0	48.70	86.10	6,843.9	200.7	-482.8	1,321,464.42	3,124,510.42	40.214951	-105.054179
7,010.0	50.90	88.40	6,874.2	202.4	-447.0	1,321,466.31	3,124,546.26	40.214956	-105.054051
7,057.0	53.60	89.50	6,903.0	203.1	-409.8	1,321,467.17	3,124,583.41	40.214957	-105.053918
7,104.0	56.90	89.50	6,929.8	203.4	-371.2	1,321,467.70	3,124,622.02	40.214958	-105.053780
7,152.0	61.90	88.00	6,954.2	204.3	-329.9	1,321,468.82	3,124,663.30	40.214961	-105.053632
7,199.0	66.20	87.70	6,974.8	205.9	-287.7	1,321,470.62	3,124,705.52	40.214965	-105.053481
7,247.0	69.10	88.80	6,993.0	207.2	-243.4	1,321,472.20	3,124,749.88	40.214969	-105.053322
7,294.0	71.40	88.90	7,008.9	208.1	-199.1	1,321,473.31	3,124,794.09	40.214971	-105.053163
7,342.0	73.20	89.50	7,023.5	208.8	-153.4	1,321,474.18	3,124,839.81	40.214973	-105.053000
7,389.0	75.60	91.00	7,036.1	208.6	-108.1	1,321,474.20	3,124,885.08	40.214973	-105.052838
7,437.0	79.30	91.60	7,046.6	207.5	-61.3	1,321,473.38	3,124,931.91	40.214970	-105.052670
7,476.0	84.50	91.00	7,052.0	206.6	-22.7	1,321,472.70	3,124,970.51	40.214967	-105.052532
7,554.0	85.90	88.90	7,058.6	206.7	55.0	1,321,473.16	3,125,048.22	40.214967	-105.052253
7,649.0	87.30	89.60	7,064.2	207.9	149.8	1,321,474.88	3,125,143.04	40.214971	-105.051914
7,743.0	86.50	89.30	7,069.3	208.8	243.7	1,321,476.25	3,125,236.89	40.214973	-105.051578
7,839.0	89.10	90.60	7,073.0	208.9	339.6	1,321,476.82	3,125,332.81	40.214974	-105.051234
7,934.0	88.90	91.00	7,074.6	207.6	434.6	1,321,475.97	3,125,427.79	40.214970	-105.050894
8,028.0	88.20	90.60	7,077.0	206.3	528.5	1,321,475.13	3,125,521.76	40.214966	-105.050558
8,123.0	87.20	90.00	7,080.8	205.8	623.4	1,321,475.12	3,125,616.68	40.214965	-105.050218
8,217.0	89.50	90.00	7,083.5	205.8	717.4	1,321,475.59	3,125,710.63	40.214965	-105.049881
8,312.0	90.90	90.30	7,083.2	205.5	812.4	1,321,475.82	3,125,805.63	40.214964	-105.049541
8,407.0	90.00	89.00	7,082.5	206.1	907.4	1,321,476.88	3,125,900.62	40.214966	-105.049201
8,502.0	90.70	89.60	7,081.9	207.3	1,002.4	1,321,478.52	3,125,995.60	40.214969	-105.048861
8,596.0	89.80	89.90	7,081.5	207.7	1,096.4	1,321,479.41	3,126,089.59	40.214970	-105.048524
8,691.0	89.10	90.70	7,082.4	207.2	1,191.4	1,321,479.39	3,126,184.59	40.214969	-105.048184
8,786.0	88.40	90.60	7,084.4	206.1	1,286.3	1,321,478.79	3,126,279.56	40.214966	-105.047844
8,880.0	89.20	91.30	7,086.4	204.6	1,380.3	1,321,477.71	3,126,373.53	40.214961	-105.047508
8,975.0	88.70	90.60	7,088.2	203.0	1,475.3	1,321,476.61	3,126,468.51	40.214957	-105.047168
9,070.0	87.90	88.90	7,091.0	203.4	1,570.2	1,321,477.50	3,126,563.46	40.214958	-105.046828
9,164.0	88.40	89.60	7,094.0	204.6	1,664.2	1,321,479.21	3,126,657.40	40.214962	-105.046491
9,259.0	89.10	90.40	7,096.1	204.6	1,759.2	1,321,479.69	3,126,752.37	40.214962	-105.046151
9,353.0	88.70	90.60	7,097.9	203.8	1,853.1	1,321,479.34	3,126,846.35	40.214959	-105.045815
9,448.0	89.60	90.70	7,099.3	202.7	1,948.1	1,321,478.74	3,126,941.34	40.214956	-105.045475
9,543.0	89.10	90.50	7,100.4	201.7	2,043.1	1,321,478.23	3,127,036.33	40.214954	-105.045134
9,638.0	89.50	90.50	7,101.5	200.9	2,138.1	1,321,477.88	3,127,131.33	40.214951	-105.044794
9,733.0	88.90	89.80	7,102.9	200.7	2,233.1	1,321,478.11	3,127,226.31	40.214951	-105.044454
9,828.0	90.10	89.20	7,103.7	201.5	2,328.1	1,321,479.42	3,127,321.30	40.214953	-105.044114
9,922.0	89.80	89.60	7,103.8	202.5	2,422.1	1,321,480.88	3,127,415.29	40.214956	-105.043777
10,017.0	89.10	89.20	7,104.7	203.5	2,517.1	1,321,482.35	3,127,510.27	40.214958	-105.043437
10,112.0	90.00	88.90	7,105.4	205.0	2,612.0	1,321,484.40	3,127,605.25	40.214963	-105.043097

# Cathedral Energy Services

## Survey Report - Geographic

<b>Company:</b>	EnCana Oil & Gas (USA) Inc	<b>Local Co-ordinate Reference:</b>	Well Bohrer 2D-19H-E368
<b>Project:</b>	DJ Wattenberg	<b>TVD Reference:</b>	32' KB @ 5091.0ft (Patterson 326)
<b>Site:</b>	S19-T3N-R68W (Bohrer)	<b>MD Reference:</b>	32' KB @ 5091.0ft (Patterson 326)
<b>Well:</b>	Bohrer 2D-19H-E368	<b>North Reference:</b>	True
<b>Wellbore:</b>	Hz	<b>Survey Calculation Method:</b>	Minimum Curvature
<b>Design:</b>	FINAL	<b>Database:</b>	USA EDM 5000 Multi Users DB

Survey									
Measured Depth (ft)	Inclination (°)	Azimuth (°)	Vertical Depth (ft)	+N/-S (ft)	+E/-W (ft)	Map Northing (ft)	Map Easting (ft)	Latitude	Longitude
10,207.0	89.10	87.40	7,106.2	208.1	2,707.0	1,321,487.95	3,127,700.17	40.214971	-105.042757
10,302.0	89.10	90.00	7,107.7	210.3	2,801.9	1,321,490.58	3,127,795.12	40.214977	-105.042417
10,397.0	89.50	91.80	7,108.8	208.8	2,896.9	1,321,489.57	3,127,890.10	40.214973	-105.042077
10,491.0	88.50	90.90	7,110.5	206.6	2,990.9	1,321,487.83	3,127,984.07	40.214967	-105.041741
10,586.0	90.90	91.10	7,111.0	204.9	3,085.9	1,321,486.65	3,128,079.05	40.214962	-105.041401
10,682.0	91.80	91.90	7,108.7	202.4	3,181.8	1,321,484.62	3,128,175.00	40.214955	-105.041057
10,776.0	91.50	91.70	7,106.0	199.4	3,275.7	1,321,482.15	3,128,268.93	40.214947	-105.040721
10,871.0	89.70	91.40	7,105.0	196.9	3,370.7	1,321,480.06	3,128,363.90	40.214940	-105.040381
10,966.0	89.30	91.50	7,105.8	194.5	3,465.6	1,321,478.13	3,128,458.88	40.214933	-105.040041
11,061.0	89.40	90.30	7,106.9	193.0	3,560.6	1,321,477.12	3,128,553.86	40.214929	-105.039701
11,155.0	88.70	90.60	7,108.5	192.2	3,654.6	1,321,476.86	3,128,647.85	40.214927	-105.039364
11,250.0	89.80	89.60	7,109.7	192.1	3,749.6	1,321,477.17	3,128,742.84	40.214927	-105.039024
11,345.0	89.50	90.50	7,110.3	192.0	3,844.6	1,321,477.57	3,128,837.84	40.214926	-105.038684
11,439.0	89.60	91.00	7,111.0	190.8	3,938.5	1,321,476.81	3,128,931.81	40.214923	-105.038347
<b>Last CES Survey @ 11,439' MD</b>									
11,492.0	89.60	91.00	7,111.4	189.8	3,991.5	1,321,476.15	3,128,984.80	40.214920	-105.038158
<b>PTB @ 11,492'</b>									

Design Targets									
Target Name	Dip Angle (°)	Dip Dir. (°)	TVD (ft)	+N/-S (ft)	+E/-W (ft)	Northing (ft)	Easting (ft)	Latitude	Longitude
- hit/miss target									
- Shape									
Bohrer 2D-19H-E368 TC	0.00	0.00	7,073.0	204.3	893.3	1,321,475.04	3,125,886.55	40.214961	-105.049252
- actual wellpath misses target center by 9.6ft at 8393.0ft MD (7082.5 TVD, 205.9 N, 893.4 E)									
- Point									
Bohrer 2D-19H-E368 TC	0.00	0.00	7,106.0	204.3	2,393.3	1,321,482.61	3,127,386.53	40.214961	-105.043880
- actual wellpath misses target center by 3.1ft at 9893.3ft MD (7103.7 TVD, 202.2 N, 2393.3 E)									
- Point									
Bohrer 2D-19H-E368 PE	0.00	0.00	7,119.0	204.3	4,046.6	1,321,490.95	3,129,039.83	40.214960	-105.037960
- actual wellpath misses target center by 57.5ft at 11492.0ft MD (7111.4 TVD, 189.8 N, 3991.5 E)									
- Point									

Design Annotations				
Measured Depth (ft)	Vertical Depth (ft)	Local Coordinates		Comment
		+N/-S (ft)	+E/-W (ft)	
11,439.0	7,111.0	190.8	3,938.5	Last CES Survey @ 11,439' MD
11,492.0	7,111.4	189.8	3,991.5	PTB @ 11,492'

Checked By: \_\_\_\_\_ Approved By: \_\_\_\_\_ Date: \_\_\_\_\_