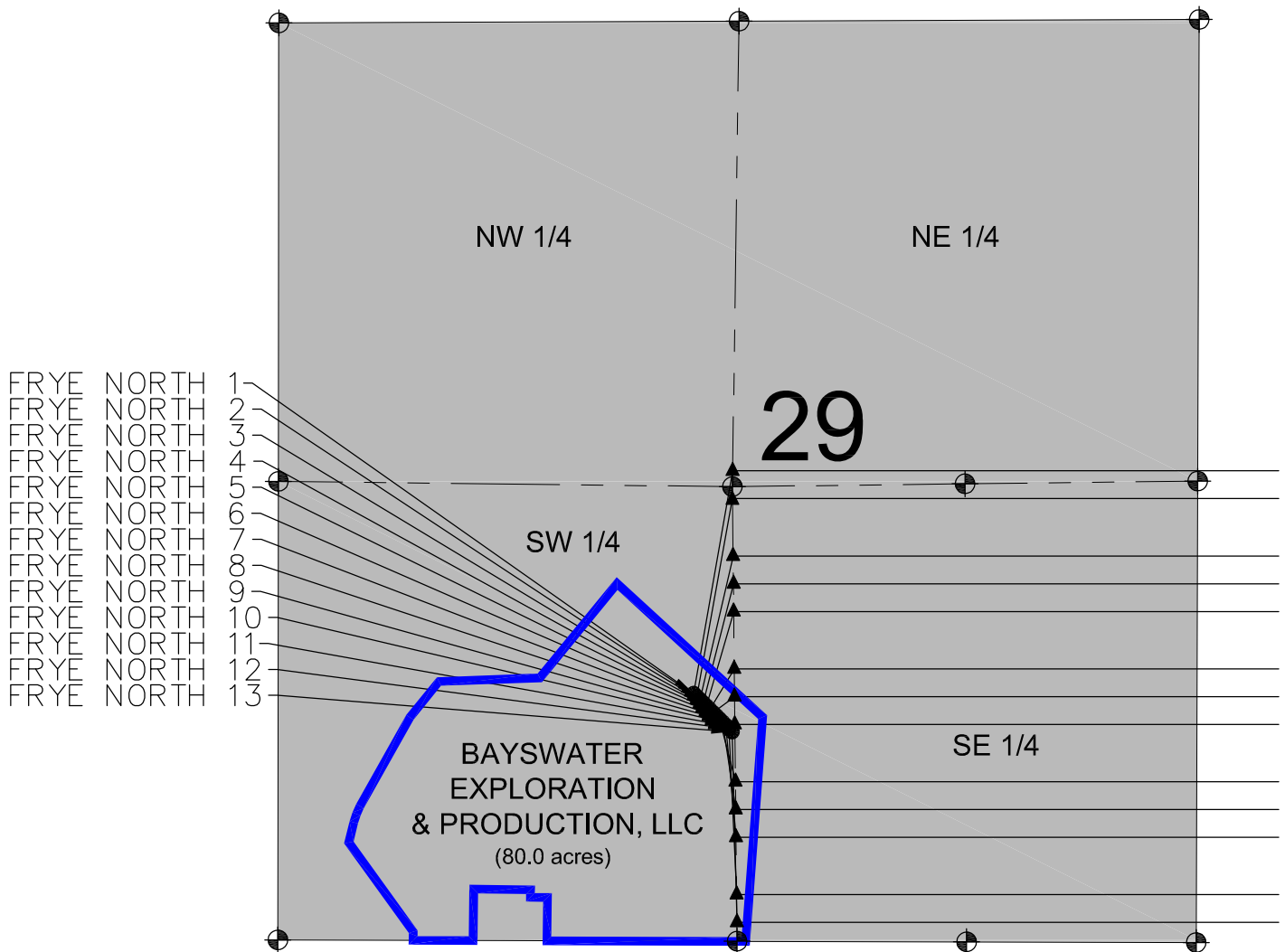


LEASE DRAWING: FRYE 29-H



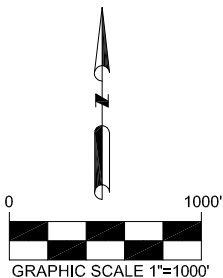
NOTES:

FRYE NORTH 1 TO BE AT 1427' FSL, 2394' FWL.
 BOTTOM HOLE AT 2613' FNL & 2557' FWL. SEC 27.
 FRYE NORTH 2 TO BE AT 1408' FSL, 2412' FWL.
 BOTTOM HOLE AT 2536' FSL & 2558' FWL. SEC 27.
 FRYE NORTH 3 TO BE AT 1390' FSL, 2430' FWL.
 BOTTOM HOLE AT 2206' FSL & 2560' FWL. SEC 27.
 FRYE NORTH 4 TO BE AT 1372' FSL, 2449' FWL.
 BOTTOM HOLE AT 2046' FSL & 2560' FWL. SEC 27.
 FRYE NORTH 5 TO BE AT 1353' FSL, 2467' FWL.
 BOTTOM HOLE AT 1886' FSL & 2561' FWL. SEC 27.
 FRYE NORTH 6 TO BE AT 1335' FSL, 2486' FWL.
 BOTTOM HOLE AT 1556' FSL & 2563' FWL. SEC 27.
 FRYE NORTH 7 TO BE AT 1317' FSL, 2504' FWL.
 BOTTOM HOLE AT 1396' FSL & 2563' FWL. SEC 27.

FRYE NORTH 8 TO BE AT 1298' FSL, 2523' FWL.
 BOTTOM HOLE AT 1236' FSL & 2564' FWL. SEC 27.
 FRYE NORTH 9 TO BE AT 1280' FSL, 2541' FWL.
 BOTTOM HOLE AT 906' FSL & 2566' FWL. SEC 27.
 FRYE NORTH 10 TO BE AT 1262' FSL, 2559' FWL.
 BOTTOM HOLE AT 746' FSL & 2566' FWL. SEC 27.
 FRYE NORTH 11 TO BE AT 1243' FSL, 2578' FWL.
 BOTTOM HOLE AT 586' FSL & 2567' FWL. SEC 27.
 FRYE NORTH 12 TO BE AT 1225' FSL, 2596' FWL.
 BOTTOM HOLE AT 256' FSL & 2569' FWL. SEC 27.
 FRYE NORTH 13 TO BE AT 1207' FSL, 2615' FWL.
 BOTTOM HOLE AT 96' FSL & 2570' FWL. SEC 27.

LEGEND

- = EXISTING MONUMENT
- = PROPOSED WELL
- = LANDING POINT
- = LEASE LINES



PREPARED BY:



FIELD DATE:

07-14-14

DRAWING DATE:

11-24-14

BY:

MDCA

CHECKED BY:

MLP

SITE NAME:

FRYE 29-H

SURFACE LOCATION:

E 1/2 SW 1/4, SEC. 29, T7N, R67W, 6TH P.M.
 WELD COUNTY, COLORADO

PREPARED FOR:

EXTRACTION
 OIL & GAS