

EXTRACTION OIL & GAS

WELD COUNTY, COLORADO (NAD 83)

SEC. 29 T7N R67W 6th P.M.

FRYE NORTH 2

ORIGINAL WELLBORE

03 August, 2014

Plan: PROPOSAL #1

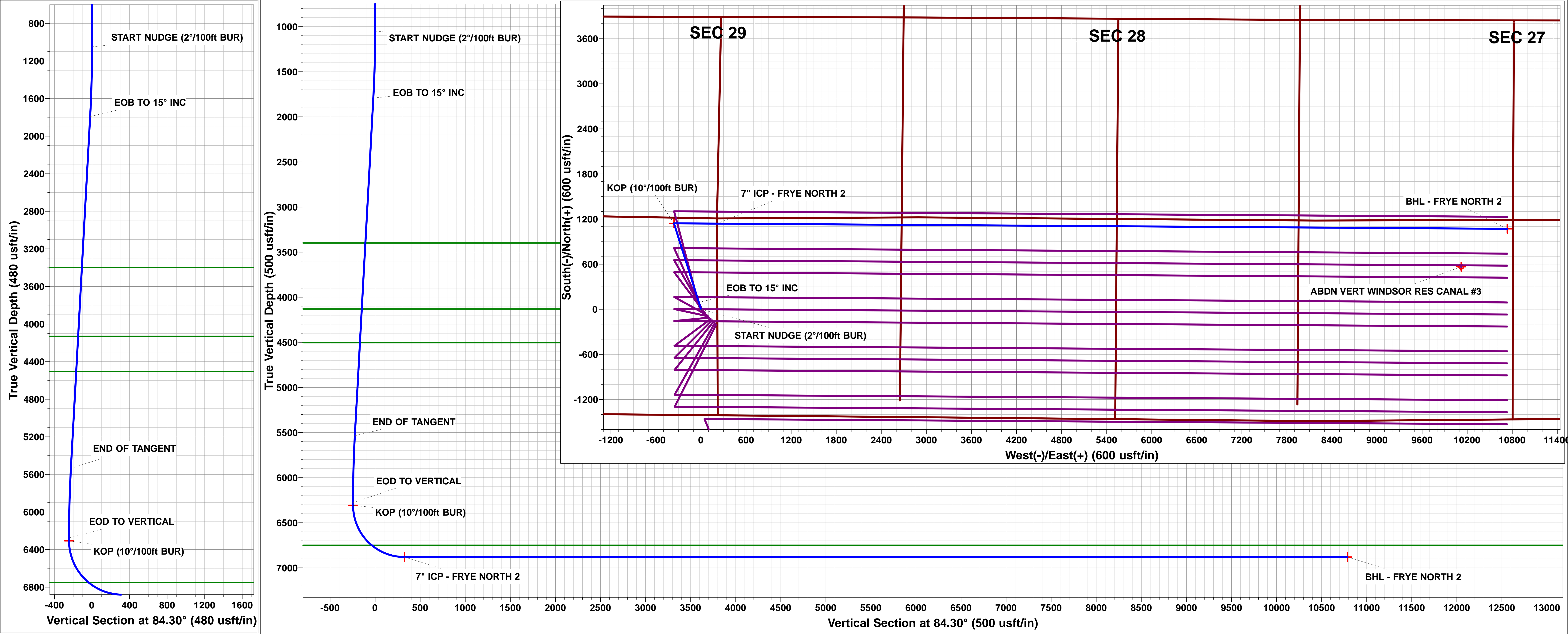
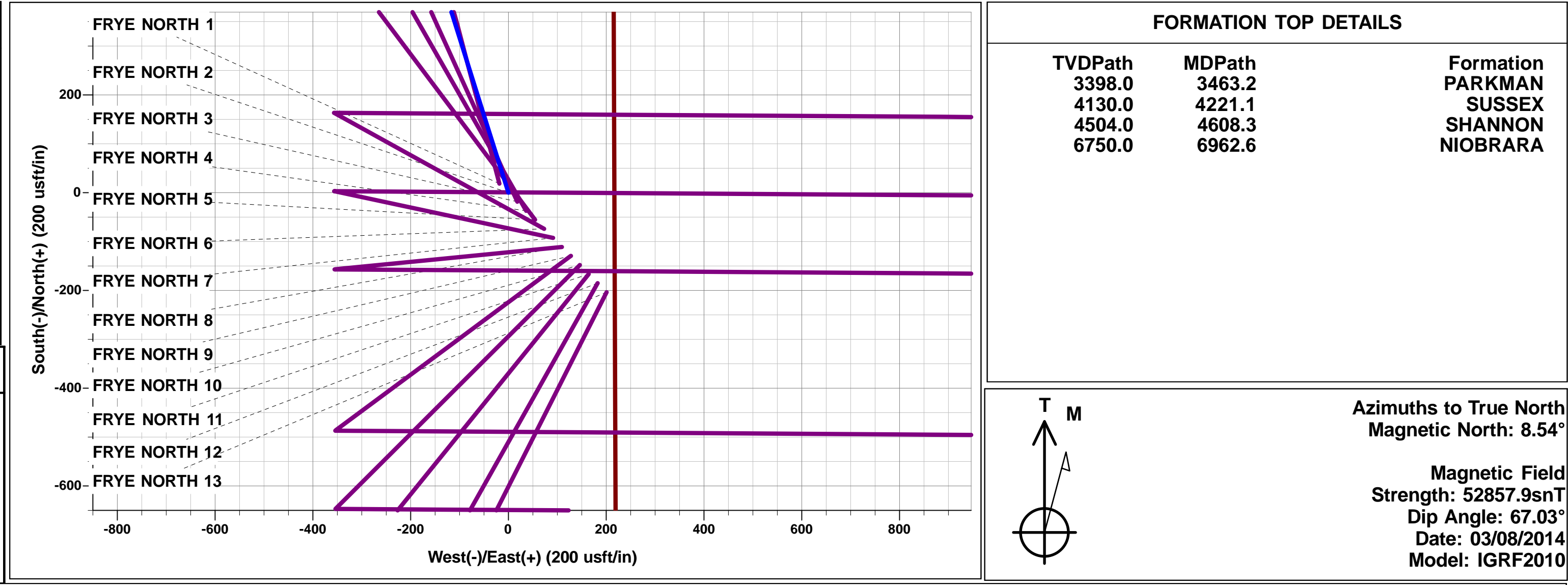




Project: WELD COUNTY, COLORADO (NAD 83)
Site: SEC. 29 T7N R67W 6th P.M.
Well: FRYE NORTH 2
Wellbore: ORIGINAL WELLBORE
Design: PROPOSAL #1

ANNOTATIONS										
TVD	MD	Inc	Azi	+N/-S	+E/-W	VSect	Dep	Annotation		
1050.0	1050.0	0.00	0.00	0.0	0.0	0.0	0.0	START NUDGE (2°/100ft BUR)		
1791.7	1800.2	15.00	342.51	93.2	-29.4	-20.0	97.7	EOB TO 15° INC		
5535.4	5676.1	15.00	342.51	1050.2	-330.9	-225.1	1101.1	END OF TANGENT		
6277.1	6426.3	0.00	0.00	1143.4	-360.3	-245.0	1198.8	EOD TO VERTICAL		
6307.1	6456.3	0.00	0.00	1143.4	-360.3	-245.0	1198.8	KOP (10°/100ft BUR)		
6880.0	7356.3	90.00	90.38	1139.6	212.6	324.7	1771.7	7" ICP - FRYE NORTH 2		
6880.0	17877.3	90.00	90.37	1070.5	10733.4	10786.7	12292.8	BHL - FRYE NORTH 2		

WELLBORE TARGET DETAILS (LAT/LONG)					
Name	TVD	+N/-S	+E/-W	Latitude	Longitude
KOP - FRYE NORTH 2	6307.1	1143.4	-360.3	40.545033	-104.919634
7" ICP - FRYE NORTH 2	6880.0	1139.6	212.6	40.545023	-104.917573
BHL - FRYE NORTH 2	6880.0	1070.5	10733.4	40.544827	-104.879718



Planning Report



Database:	EDM 5000.1 Single User Db	Local Co-ordinate Reference:	Well FRYE NORTH 2
Company:	EXTRACTION OIL & GAS	TVD Reference:	KB-EST @ 4984.0usft (Original Well Elev)
Project:	WELD COUNTY, COLORADO (NAD 83)	MD Reference:	KB-EST @ 4984.0usft (Original Well Elev)
Site:	SEC. 29 T7N R67W 6th P.M.	North Reference:	True
Well:	FRYE NORTH 2	Survey Calculation Method:	Minimum Curvature
Wellbore:	ORIGINAL WELLBORE		
Design:	PROPOSAL #1		

Project	WELD COUNTY, COLORADO (NAD 83)		
Map System:	US State Plane 1983	System Datum:	Mean Sea Level
Geo Datum:	North American Datum 1983		
Map Zone:	Colorado Northern Zone		Using geodetic scale factor

Site	SEC. 29 T7N R67W 6th P.M.		
Site Position:		Northing:	1,440,801.81 usft
From:	Lat/Long	Easting:	3,161,640.19 usft
Position Uncertainty:	0.0 usft	Slot Radius:	1.10000ft
		Latitude:	40.541946
		Longitude:	-104.918404
		Grid Convergence:	0.38 °

Well	FRYE NORTH 2		
Well Position	+N/-S	-18.6 usft	Northing:
	+E/-W	18.3 usft	Easting:
Position Uncertainty	0.0 usft	Wellhead Elevation:	usft
		Latitude:	40.541895
		Longitude:	-104.918338
		Ground Level:	4,960.0 usft

Wellbore	ORIGINAL WELLBORE				
Magnetics	Model Name	Sample Date	Declination (°)	Dip Angle (°)	Field Strength (nT)
	IGRF2010	03/08/2014	8.54	67.03	52,858

Design	PROPOSAL #1			
Audit Notes:				
Version:	Phase:	PROTOTYPE	Tie On Depth:	0.0
Vertical Section:	Depth From (TVD) (usft)	+N/-S (usft)	+E/-W (usft)	Direction (°)
	0.0	0.0	0.0	84.30

Plan Sections											
MD (usft)	Inc (°)	Azi (°)	Vertical Depth	SS (usft)	+N/-S (usft)	+E/-W (usft)	Dogleg Rate (°/100usf)	Build Rate (°/100usf)	Turn Rate (°/100usf)	TFO (°)	Target
0.0	0.00	0.00	0.0	-4,984.0	0.0	0.0	0.00	0.00	0.00	0.00	
1,050.0	0.00	0.00	1,050.0	-3,934.0	0.0	0.0	0.00	0.00	0.00	0.00	
1,800.2	15.00	342.51	1,791.7	-3,192.3	93.2	-29.4	2.00	2.00	0.00	342.51	
5,676.1	15.00	342.51	5,535.4	551.4	1,050.2	-330.9	0.00	0.00	0.00	0.00	
6,426.3	0.00	0.00	6,277.1	1,293.1	1,143.4	-360.3	2.00	-2.00	0.00	180.00	
6,456.3	0.00	0.00	6,307.1	1,323.1	1,143.4	-360.3	0.00	0.00	0.00	0.00	KOP - FRYE NORT
7,356.3	90.00	90.38	6,880.0	1,896.0	1,139.6	212.6	10.00	10.00	10.04	90.38	7" ICP - FRYE NOF
17,877.3	90.00	90.37	6,880.0	1,896.0	1,070.5	10,733.4	0.00	0.00	0.00	-123.85	BHL - FRYE NORT

Planning Report



Database:	EDM 5000.1 Single User Db	Local Co-ordinate Reference:	Well FRYE NORTH 2
Company:	EXTRACTION OIL & GAS	TVD Reference:	KB-EST @ 4984.0usft (Original Well Elev)
Project:	WELD COUNTY, COLORADO (NAD 83)	MD Reference:	KB-EST @ 4984.0usft (Original Well Elev)
Site:	SEC. 29 T7N R67W 6th P.M.	North Reference:	True
Well:	FRYE NORTH 2	Survey Calculation Method:	Minimum Curvature
Wellbore:	ORIGINAL WELLBORE		
Design:	PROPOSAL #1		

Planned Survey

MD (usft)	Inc (°)	Azi (°)	TVD (usft)	SS (usft)	+N/-S (usft)	+E/-W (usft)	Vertical Section (usft)	Dogleg Rate (°/100usft)	Build Rate (°/100usft)	Turn Rate (°/100usft)
0.0	0.00	0.00	0.0	4,984.00	0.0	0.0	0.0	0.00	0.00	0.00
100.0	0.00	0.00	100.0	4,884.00	0.0	0.0	0.0	0.00	0.00	0.00
200.0	0.00	0.00	200.0	4,784.00	0.0	0.0	0.0	0.00	0.00	0.00
300.0	0.00	0.00	300.0	4,684.00	0.0	0.0	0.0	0.00	0.00	0.00
400.0	0.00	0.00	400.0	4,584.00	0.0	0.0	0.0	0.00	0.00	0.00
500.0	0.00	0.00	500.0	4,484.00	0.0	0.0	0.0	0.00	0.00	0.00
600.0	0.00	0.00	600.0	4,384.00	0.0	0.0	0.0	0.00	0.00	0.00
700.0	0.00	0.00	700.0	4,284.00	0.0	0.0	0.0	0.00	0.00	0.00
800.0	0.00	0.00	800.0	4,184.00	0.0	0.0	0.0	0.00	0.00	0.00
900.0	0.00	0.00	900.0	4,084.00	0.0	0.0	0.0	0.00	0.00	0.00
1,000.0	0.00	0.00	1,000.0	3,984.00	0.0	0.0	0.0	0.00	0.00	0.00
START NUDGE (2°/100ft BUR)										
1,050.0	0.00	0.00	1,050.0	3,934.00	0.0	0.0	0.0	0.00	0.00	0.00
1,100.0	1.00	342.51	1,100.0	3,884.00	0.4	-0.1	-0.1	2.00	2.00	0.00
1,200.0	3.00	342.51	1,199.9	3,784.07	3.7	-1.2	-0.8	2.00	2.00	0.00
1,300.0	5.00	342.51	1,299.7	3,684.32	10.4	-3.3	-2.2	2.00	2.00	0.00
1,400.0	7.00	342.51	1,399.1	3,584.87	20.4	-6.4	-4.4	2.00	2.00	0.00
1,500.0	9.00	342.51	1,498.2	3,485.85	33.6	-10.6	-7.2	2.00	2.00	0.00
1,600.0	11.00	342.51	1,596.6	3,387.37	50.2	-15.8	-10.8	2.00	2.00	0.00
1,700.0	13.00	342.51	1,694.4	3,289.56	70.0	-22.1	-15.0	2.00	2.00	0.00
1,800.0	15.00	342.51	1,791.5	3,192.54	93.1	-29.3	-20.0	2.00	2.00	0.00
EOB TO 15° INC										
1,800.2	15.00	342.51	1,791.7	3,192.30	93.2	-29.4	-20.0	2.00	2.00	0.00
1,900.0	15.00	342.51	1,888.1	3,095.95	117.8	-37.1	-25.2	0.00	0.00	0.00
2,000.0	15.00	342.51	1,984.6	2,999.36	142.5	-44.9	-30.5	0.00	0.00	0.00
2,100.0	15.00	342.51	2,081.2	2,902.77	167.2	-52.7	-35.8	0.00	0.00	0.00
2,200.0	15.00	342.51	2,177.8	2,806.18	191.9	-60.5	-41.1	0.00	0.00	0.00
2,300.0	15.00	342.51	2,274.4	2,709.59	216.6	-68.2	-46.4	0.00	0.00	0.00
2,400.0	15.00	342.51	2,371.0	2,613.00	241.3	-76.0	-51.7	0.00	0.00	0.00
2,500.0	15.00	342.51	2,467.6	2,516.41	266.0	-83.8	-57.0	0.00	0.00	0.00
2,600.0	15.00	342.51	2,564.2	2,419.82	290.6	-91.6	-62.3	0.00	0.00	0.00
2,700.0	15.00	342.51	2,660.8	2,323.22	315.3	-99.4	-67.6	0.00	0.00	0.00
2,800.0	15.00	342.51	2,757.4	2,226.63	340.0	-107.1	-72.9	0.00	0.00	0.00
2,900.0	15.00	342.51	2,854.0	2,130.04	364.7	-114.9	-78.2	0.00	0.00	0.00
3,000.0	15.00	342.51	2,950.5	2,033.45	389.4	-122.7	-83.5	0.00	0.00	0.00
3,100.0	15.00	342.51	3,047.1	1,936.86	414.1	-130.5	-88.7	0.00	0.00	0.00
3,200.0	15.00	342.51	3,143.7	1,840.27	438.8	-138.3	-94.0	0.00	0.00	0.00
3,300.0	15.00	342.51	3,240.3	1,743.68	463.5	-146.1	-99.3	0.00	0.00	0.00
3,400.0	15.00	342.51	3,336.9	1,647.09	488.2	-153.8	-104.6	0.00	0.00	0.00
PARKMAN										
3,463.2	15.00	342.51	3,398.0	1,586.00	503.8	-158.8	-108.0	0.00	0.00	0.00
3,500.0	15.00	342.51	3,433.5	1,550.50	512.9	-161.6	-109.9	0.00	0.00	0.00
3,600.0	15.00	342.51	3,530.1	1,453.91	537.6	-169.4	-115.2	0.00	0.00	0.00
3,700.0	15.00	342.51	3,626.7	1,357.32	562.3	-177.2	-120.5	0.00	0.00	0.00
3,800.0	15.00	342.51	3,723.3	1,260.73	587.0	-185.0	-125.8	0.00	0.00	0.00
3,900.0	15.00	342.51	3,819.9	1,164.14	611.7	-192.7	-131.1	0.00	0.00	0.00
4,000.0	15.00	342.51	3,916.4	1,067.55	636.4	-200.5	-136.4	0.00	0.00	0.00
4,100.0	15.00	342.51	4,013.0	970.96	661.0	-208.3	-141.7	0.00	0.00	0.00
4,200.0	15.00	342.51	4,109.6	874.37	685.7	-216.1	-147.0	0.00	0.00	0.00
SUSSEX										
4,221.1	15.00	342.51	4,130.0	854.00	690.9	-217.7	-148.1	0.00	0.00	0.00
4,300.0	15.00	342.51	4,206.2	777.78	710.4	-223.9	-152.3	0.00	0.00	0.00
4,400.0	15.00	342.51	4,302.8	681.19	735.1	-231.6	-157.5	0.00	0.00	0.00
4,500.0	15.00	342.51	4,399.4	584.60	759.8	-239.4	-162.8	0.00	0.00	0.00

Database:	EDM 5000.1 Single User Db	Local Co-ordinate Reference:	Well FRYE NORTH 2
Company:	EXTRACTION OIL & GAS	TVD Reference:	KB-EST @ 4984.0usft (Original Well Elev)
Project:	WELD COUNTY, COLORADO (NAD 83)	MD Reference:	KB-EST @ 4984.0usft (Original Well Elev)
Site:	SEC. 29 T7N R67W 6th P.M.	North Reference:	True
Well:	FRYE NORTH 2	Survey Calculation Method:	Minimum Curvature
Wellbore:	ORIGINAL WELLBORE		
Design:	PROPOSAL #1		

Planned Survey

MD (usft)	Inc (°)	Azi (°)	TVD (usft)	SS (usft)	+N/-S (usft)	+E/-W (usft)	Vertical Section (usft)	Dogleg Rate (°/100usft)	Build Rate (°/100usft)	Turn Rate (°/100usft)
4,600.0	15.00	342.51	4,496.0	488.01	784.5	-247.2	-168.1	0.00	0.00	0.00
SHANNON										
4,608.3	15.00	342.51	4,504.0	480.00	786.6	-247.9	-168.6	0.00	0.00	0.00
4,700.0	15.00	342.51	4,592.6	391.42	809.2	-255.0	-173.4	0.00	0.00	0.00
4,800.0	15.00	342.51	4,689.2	294.83	833.9	-262.8	-178.7	0.00	0.00	0.00
4,900.0	15.00	342.51	4,785.8	198.24	858.6	-270.6	-184.0	0.00	0.00	0.00
5,000.0	15.00	342.51	4,882.4	101.65	883.3	-278.3	-189.3	0.00	0.00	0.00
5,100.0	15.00	342.51	4,978.9	5.06	908.0	-286.1	-194.6	0.00	0.00	0.00
5,200.0	15.00	342.51	5,075.5	-91.53	932.7	-293.9	-199.9	0.00	0.00	0.00
5,300.0	15.00	342.51	5,172.1	-188.12	957.4	-301.7	-205.2	0.00	0.00	0.00
5,400.0	15.00	342.51	5,268.7	-284.71	982.1	-309.5	-210.5	0.00	0.00	0.00
5,500.0	15.00	342.51	5,365.3	-381.31	1,006.8	-317.2	-215.8	0.00	0.00	0.00
5,600.0	15.00	342.51	5,461.9	-477.90	1,031.4	-325.0	-221.1	0.00	0.00	0.00
END OF TANGENT										
5,676.1	15.00	342.51	5,535.4	-551.40	1,050.2	-330.9	-225.1	0.00	0.00	0.00
5,700.0	14.53	342.51	5,558.5	-574.51	1,056.0	-332.8	-226.3	2.00	-2.00	0.00
5,800.0	12.53	342.51	5,655.7	-671.73	1,078.4	-339.8	-231.1	2.00	-2.00	0.00
5,900.0	10.53	342.51	5,753.7	-769.71	1,097.4	-345.8	-235.2	2.00	-2.00	0.00
6,000.0	8.53	342.51	5,852.3	-868.33	1,113.2	-350.8	-238.6	2.00	-2.00	0.00
6,100.0	6.53	342.51	5,951.5	-967.46	1,125.7	-354.7	-241.2	2.00	-2.00	0.00
6,200.0	4.53	342.51	6,051.0	-1,066.99	1,134.9	-357.6	-243.2	2.00	-2.00	0.00
6,300.0	2.53	342.51	6,150.8	-1,166.80	1,140.7	-359.5	-244.5	2.00	-2.00	0.00
6,400.0	0.53	342.51	6,250.8	-1,266.75	1,143.3	-360.3	-245.0	2.00	-2.00	0.00
EOD TO VERTICAL										
6,426.3	0.00	0.00	6,277.1	-1,293.10	1,143.4	-360.3	-245.0	2.00	-2.00	0.00
KOP (10°/100ft BUR)										
6,456.3	0.00	0.00	6,307.1	-1,323.10	1,143.4	-360.3	-245.0	0.00	0.00	0.00
6,500.0	4.37	90.38	6,350.7	-1,366.71	1,143.4	-358.6	-243.4	10.00	10.00	0.00
6,600.0	14.37	90.38	6,449.3	-1,465.25	1,143.3	-342.4	-227.2	10.00	10.00	0.00
6,700.0	24.37	90.38	6,543.5	-1,559.48	1,143.1	-309.3	-194.3	10.00	10.00	0.00
6,800.0	34.37	90.38	6,630.5	-1,646.51	1,142.7	-260.3	-145.6	10.00	10.00	0.00
6,900.0	44.37	90.38	6,707.7	-1,723.72	1,142.3	-196.9	-82.6	10.00	10.00	0.00
NIOBRARA										
6,962.6	50.63	90.38	6,750.0	-1,766.00	1,142.0	-150.8	-36.7	10.00	10.00	0.00
7,000.0	54.37	90.38	6,772.8	-1,788.76	1,141.8	-121.1	-7.2	10.00	10.00	0.00
7,100.0	64.37	90.38	6,823.6	-1,839.64	1,141.2	-35.2	78.2	10.00	10.00	0.00
7,200.0	74.37	90.38	6,858.8	-1,874.82	1,140.6	58.3	171.2	10.00	10.00	0.00
7,300.0	84.37	90.38	6,877.2	-1,893.24	1,140.0	156.4	268.8	10.00	10.00	0.00
7" ICP - FRYE NORTH 2										
7,356.3	90.00	90.38	6,880.0	-1,896.00	1,139.6	212.6	324.7	10.00	10.00	0.00
7,400.0	90.00	90.38	6,880.0	-1,896.00	1,139.3	256.3	368.1	0.00	0.00	0.00
7,500.0	90.00	90.38	6,880.0	-1,895.99	1,138.7	356.3	467.6	0.00	0.00	0.00
7,600.0	90.00	90.38	6,880.0	-1,895.99	1,138.0	456.3	567.0	0.00	0.00	0.00
7,700.0	90.00	90.38	6,880.0	-1,895.99	1,137.3	556.3	666.5	0.00	0.00	0.00
7,800.0	90.00	90.38	6,880.0	-1,895.98	1,136.7	656.3	765.9	0.00	0.00	0.00
7,900.0	90.00	90.38	6,880.0	-1,895.98	1,136.0	756.3	865.3	0.00	0.00	0.00
8,000.0	90.00	90.38	6,880.0	-1,895.98	1,135.3	856.3	964.8	0.00	0.00	0.00
8,100.0	90.00	90.38	6,880.0	-1,895.97	1,134.7	956.3	1,064.2	0.00	0.00	0.00
8,200.0	90.00	90.38	6,880.0	-1,895.97	1,134.0	1,056.3	1,163.6	0.00	0.00	0.00
8,300.0	90.00	90.38	6,880.0	-1,895.96	1,133.4	1,156.3	1,263.1	0.00	0.00	0.00
8,400.0	90.00	90.38	6,880.0	-1,895.96	1,132.7	1,256.3	1,362.5	0.00	0.00	0.00
8,500.0	90.00	90.38	6,880.0	-1,895.96	1,132.0	1,356.3	1,462.0	0.00	0.00	0.00
8,600.0	90.00	90.38	6,880.0	-1,895.95	1,131.4	1,456.3	1,561.4	0.00	0.00	0.00

Planning Report



Database:	EDM 5000.1 Single User Db	Local Co-ordinate Reference:	Well FRYE NORTH 2
Company:	EXTRACTION OIL & GAS	TVD Reference:	KB-EST @ 4984.0usft (Original Well Elev)
Project:	WELD COUNTY, COLORADO (NAD 83)	MD Reference:	KB-EST @ 4984.0usft (Original Well Elev)
Site:	SEC. 29 T7N R67W 6th P.M.	North Reference:	True
Well:	FRYE NORTH 2	Survey Calculation Method:	Minimum Curvature
Wellbore:	ORIGINAL WELLBORE		
Design:	PROPOSAL #1		

Planned Survey										
MD (usft)	Inc (°)	Azi (°)	TVD (usft)	SS (usft)	+N/-S (usft)	+E/-W (usft)	Vertical Section (usft)	Dogleg Rate (°/100usft)	Build Rate (°/100usft)	Turn Rate (°/100usft)
8,700.0	90.00	90.38	6,880.0	-1,895.95	1,130.7	1,556.3	1,660.8	0.00	0.00	0.00
8,800.0	90.00	90.38	6,879.9	-1,895.95	1,130.0	1,656.3	1,760.3	0.00	0.00	0.00
8,900.0	90.00	90.38	6,879.9	-1,895.95	1,129.4	1,756.3	1,859.7	0.00	0.00	0.00
9,000.0	90.00	90.38	6,879.9	-1,895.94	1,128.7	1,856.3	1,959.2	0.00	0.00	0.00
9,100.0	90.00	90.38	6,879.9	-1,895.94	1,128.1	1,956.3	2,058.6	0.00	0.00	0.00
9,200.0	90.00	90.38	6,879.9	-1,895.94	1,127.4	2,056.3	2,158.0	0.00	0.00	0.00
9,300.0	90.00	90.38	6,879.9	-1,895.93	1,126.7	2,156.3	2,257.5	0.00	0.00	0.00
9,400.0	90.00	90.38	6,879.9	-1,895.93	1,126.1	2,256.3	2,356.9	0.00	0.00	0.00
9,500.0	90.00	90.38	6,879.9	-1,895.93	1,125.4	2,356.3	2,456.3	0.00	0.00	0.00
9,600.0	90.00	90.38	6,879.9	-1,895.93	1,124.8	2,456.3	2,555.8	0.00	0.00	0.00
9,700.0	90.00	90.38	6,879.9	-1,895.92	1,124.1	2,556.3	2,655.2	0.00	0.00	0.00
9,800.0	90.00	90.38	6,879.9	-1,895.92	1,123.4	2,656.3	2,754.7	0.00	0.00	0.00
9,900.0	90.00	90.38	6,879.9	-1,895.92	1,122.8	2,756.3	2,854.1	0.00	0.00	0.00
10,000.0	90.00	90.38	6,879.9	-1,895.92	1,122.1	2,856.3	2,953.5	0.00	0.00	0.00
10,100.0	90.00	90.38	6,879.9	-1,895.92	1,121.5	2,956.3	3,053.0	0.00	0.00	0.00
10,200.0	90.00	90.38	6,879.9	-1,895.91	1,120.8	3,056.3	3,152.4	0.00	0.00	0.00
10,300.0	90.00	90.38	6,879.9	-1,895.91	1,120.1	3,156.3	3,251.9	0.00	0.00	0.00
10,400.0	90.00	90.38	6,879.9	-1,895.91	1,119.5	3,256.3	3,351.3	0.00	0.00	0.00
10,500.0	90.00	90.38	6,879.9	-1,895.91	1,118.8	3,356.3	3,450.7	0.00	0.00	0.00
10,600.0	90.00	90.38	6,879.9	-1,895.91	1,118.2	3,456.3	3,550.2	0.00	0.00	0.00
10,700.0	90.00	90.38	6,879.9	-1,895.91	1,117.5	3,556.3	3,649.6	0.00	0.00	0.00
10,800.0	90.00	90.38	6,879.9	-1,895.90	1,116.9	3,656.3	3,749.0	0.00	0.00	0.00
10,900.0	90.00	90.38	6,879.9	-1,895.90	1,116.2	3,756.3	3,848.5	0.00	0.00	0.00
11,000.0	90.00	90.38	6,879.9	-1,895.90	1,115.5	3,856.3	3,947.9	0.00	0.00	0.00
11,100.0	90.00	90.38	6,879.9	-1,895.90	1,114.9	3,956.3	4,047.4	0.00	0.00	0.00
11,200.0	90.00	90.38	6,879.9	-1,895.90	1,114.2	4,056.2	4,146.8	0.00	0.00	0.00
11,300.0	90.00	90.38	6,879.9	-1,895.90	1,113.6	4,156.2	4,246.2	0.00	0.00	0.00
11,400.0	90.00	90.38	6,879.9	-1,895.90	1,112.9	4,256.2	4,345.7	0.00	0.00	0.00
11,500.0	90.00	90.38	6,879.9	-1,895.90	1,112.2	4,356.2	4,445.1	0.00	0.00	0.00
11,600.0	90.00	90.38	6,879.9	-1,895.90	1,111.6	4,456.2	4,544.6	0.00	0.00	0.00
11,700.0	90.00	90.38	6,879.9	-1,895.89	1,110.9	4,556.2	4,644.0	0.00	0.00	0.00
11,800.0	90.00	90.38	6,879.9	-1,895.89	1,110.3	4,656.2	4,743.4	0.00	0.00	0.00
11,900.0	90.00	90.38	6,879.9	-1,895.89	1,109.6	4,756.2	4,842.9	0.00	0.00	0.00
12,000.0	90.00	90.38	6,879.9	-1,895.89	1,109.0	4,856.2	4,942.3	0.00	0.00	0.00
12,100.0	90.00	90.38	6,879.9	-1,895.89	1,108.3	4,956.2	5,041.8	0.00	0.00	0.00
12,200.0	90.00	90.38	6,879.9	-1,895.89	1,107.6	5,056.2	5,141.2	0.00	0.00	0.00
12,300.0	90.00	90.38	6,879.9	-1,895.89	1,107.0	5,156.2	5,240.6	0.00	0.00	0.00
12,400.0	90.00	90.38	6,879.9	-1,895.89	1,106.3	5,256.2	5,340.1	0.00	0.00	0.00
12,500.0	90.00	90.38	6,879.9	-1,895.89	1,105.7	5,356.2	5,439.5	0.00	0.00	0.00
12,600.0	90.00	90.38	6,879.9	-1,895.89	1,105.0	5,456.2	5,538.9	0.00	0.00	0.00
12,700.0	90.00	90.38	6,879.9	-1,895.89	1,104.4	5,556.2	5,638.4	0.00	0.00	0.00
12,800.0	90.00	90.38	6,879.9	-1,895.89	1,103.7	5,656.2	5,737.8	0.00	0.00	0.00
12,900.0	90.00	90.38	6,879.9	-1,895.89	1,103.0	5,756.2	5,837.3	0.00	0.00	0.00
13,000.0	90.00	90.38	6,879.9	-1,895.89	1,102.4	5,856.2	5,936.7	0.00	0.00	0.00
13,100.0	90.00	90.38	6,879.9	-1,895.89	1,101.7	5,956.2	6,036.1	0.00	0.00	0.00
13,200.0	90.00	90.38	6,879.9	-1,895.89	1,101.1	6,056.2	6,135.6	0.00	0.00	0.00
13,300.0	90.00	90.38	6,879.9	-1,895.89	1,100.4	6,156.2	6,235.0	0.00	0.00	0.00
13,400.0	90.00	90.38	6,879.9	-1,895.89	1,099.8	6,256.2	6,334.5	0.00	0.00	0.00
13,500.0	90.00	90.38	6,879.9	-1,895.89	1,099.1	6,356.2	6,433.9	0.00	0.00	0.00
13,600.0	90.00	90.38	6,879.9	-1,895.90	1,098.5	6,456.2	6,533.3	0.00	0.00	0.00
13,700.0	90.00	90.38	6,879.9	-1,895.90	1,097.8	6,556.2	6,632.8	0.00	0.00	0.00
13,800.0	90.00	90.38	6,879.9	-1,895.90	1,097.1	6,656.2	6,732.2	0.00	0.00	0.00
13,900.0	90.00	90.38	6,879.9	-1,895.90	1,096.5	6,756.2	6,831.7	0.00	0.00	0.00
14,000.0	90.00	90.38	6,879.9	-1,895.90	1,095.8	6,856.2	6,931.1	0.00	0.00	0.00

Database:	EDM 5000.1 Single User Db	Local Co-ordinate Reference:	Well FRYE NORTH 2
Company:	EXTRACTION OIL & GAS	TVD Reference:	KB-EST @ 4984.0usft (Original Well Elev)
Project:	WELD COUNTY, COLORADO (NAD 83)	MD Reference:	KB-EST @ 4984.0usft (Original Well Elev)
Site:	SEC. 29 T7N R67W 6th P.M.	North Reference:	True
Well:	FRYE NORTH 2	Survey Calculation Method:	Minimum Curvature
Wellbore:	ORIGINAL WELLBORE		
Design:	PROPOSAL #1		

Planned Survey										
MD (usft)	Inc (°)	Azi (°)	TVD (usft)	SS (usft)	+N/-S (usft)	+E/-W (usft)	Vertical Section (usft)	Dogleg Rate (°/100usft)	Build Rate (°/100usft)	Turn Rate (°/100usft)
14,100.0	90.00	90.38	6,879.9	-1,895.90	1,095.2	6,956.2	7,030.5	0.00	0.00	0.00
14,200.0	90.00	90.38	6,879.9	-1,895.90	1,094.5	7,056.2	7,130.0	0.00	0.00	0.00
14,300.0	90.00	90.38	6,879.9	-1,895.90	1,093.9	7,156.2	7,229.4	0.00	0.00	0.00
14,400.0	90.00	90.37	6,879.9	-1,895.90	1,093.2	7,256.2	7,328.9	0.00	0.00	0.00
14,500.0	90.00	90.37	6,879.9	-1,895.91	1,092.6	7,356.2	7,428.3	0.00	0.00	0.00
14,600.0	90.00	90.37	6,879.9	-1,895.91	1,091.9	7,456.2	7,527.7	0.00	0.00	0.00
14,700.0	90.00	90.37	6,879.9	-1,895.91	1,091.3	7,556.2	7,627.2	0.00	0.00	0.00
14,800.0	90.00	90.37	6,879.9	-1,895.91	1,090.6	7,656.2	7,726.6	0.00	0.00	0.00
14,900.0	90.00	90.37	6,879.9	-1,895.91	1,089.9	7,756.2	7,826.0	0.00	0.00	0.00
15,000.0	90.00	90.37	6,879.9	-1,895.91	1,089.3	7,856.2	7,925.5	0.00	0.00	0.00
15,100.0	90.00	90.37	6,879.9	-1,895.92	1,088.6	7,956.2	8,024.9	0.00	0.00	0.00
15,200.0	90.00	90.37	6,879.9	-1,895.92	1,088.0	8,056.2	8,124.4	0.00	0.00	0.00
15,300.0	90.00	90.37	6,879.9	-1,895.92	1,087.3	8,156.2	8,223.8	0.00	0.00	0.00
15,400.0	90.00	90.37	6,879.9	-1,895.92	1,086.7	8,256.2	8,323.2	0.00	0.00	0.00
15,500.0	90.00	90.37	6,879.9	-1,895.92	1,086.0	8,356.2	8,422.7	0.00	0.00	0.00
15,600.0	90.00	90.37	6,879.9	-1,895.93	1,085.4	8,456.2	8,522.1	0.00	0.00	0.00
15,700.0	90.00	90.37	6,879.9	-1,895.93	1,084.7	8,556.2	8,621.6	0.00	0.00	0.00
15,800.0	90.00	90.37	6,879.9	-1,895.93	1,084.1	8,656.2	8,721.0	0.00	0.00	0.00
15,900.0	90.00	90.37	6,879.9	-1,895.93	1,083.4	8,756.1	8,820.4	0.00	0.00	0.00
16,000.0	90.00	90.37	6,879.9	-1,895.94	1,082.8	8,856.1	8,919.9	0.00	0.00	0.00
16,100.0	90.00	90.37	6,879.9	-1,895.94	1,082.1	8,956.1	9,019.3	0.00	0.00	0.00
16,200.0	90.00	90.37	6,879.9	-1,895.94	1,081.5	9,056.1	9,118.8	0.00	0.00	0.00
16,300.0	90.00	90.37	6,879.9	-1,895.94	1,080.8	9,156.1	9,218.2	0.00	0.00	0.00
16,400.0	90.00	90.37	6,879.9	-1,895.95	1,080.2	9,256.1	9,317.6	0.00	0.00	0.00
16,500.0	90.00	90.37	6,880.0	-1,895.95	1,079.5	9,356.1	9,417.1	0.00	0.00	0.00
16,600.0	90.00	90.37	6,880.0	-1,895.95	1,078.8	9,456.1	9,516.5	0.00	0.00	0.00
16,700.0	90.00	90.37	6,880.0	-1,895.96	1,078.2	9,556.1	9,616.0	0.00	0.00	0.00
16,800.0	90.00	90.37	6,880.0	-1,895.96	1,077.5	9,656.1	9,715.4	0.00	0.00	0.00
16,900.0	90.00	90.37	6,880.0	-1,895.96	1,076.9	9,756.1	9,814.8	0.00	0.00	0.00
17,000.0	90.00	90.37	6,880.0	-1,895.97	1,076.2	9,856.1	9,914.3	0.00	0.00	0.00
17,100.0	90.00	90.37	6,880.0	-1,895.97	1,075.6	9,956.1	10,013.7	0.00	0.00	0.00
17,200.0	90.00	90.37	6,880.0	-1,895.97	1,074.9	10,056.1	10,113.2	0.00	0.00	0.00
17,300.0	90.00	90.37	6,880.0	-1,895.98	1,074.3	10,156.1	10,212.6	0.00	0.00	0.00
17,400.0	90.00	90.37	6,880.0	-1,895.98	1,073.6	10,256.1	10,312.0	0.00	0.00	0.00
17,500.0	90.00	90.37	6,880.0	-1,895.98	1,073.0	10,356.1	10,411.5	0.00	0.00	0.00
17,600.0	90.00	90.37	6,880.0	-1,895.99	1,072.3	10,456.1	10,510.9	0.00	0.00	0.00
17,700.0	90.00	90.37	6,880.0	-1,895.99	1,071.7	10,556.1	10,610.4	0.00	0.00	0.00
17,800.0	90.00	90.37	6,880.0	-1,896.00	1,071.0	10,656.1	10,709.8	0.00	0.00	0.00
BHL - FRYE NORTH 2										
17,877.3	90.00	90.37	6,880.0	-1,896.00	1,070.5	10,733.4	10,786.7	0.00	0.00	0.00

Formations						
MD (usft)	TVD (usft)	Name	Lithology	Dip (°)	Dip Direction (°)	
3,463.2	3,398.0	PARKMAN		0.00		
4,221.1	4,130.0	SUSSEX		0.00		
4,608.3	4,504.0	SHANNON		0.00		
6,962.6	6,750.0	NIOBRARA		0.00		

Database:	EDM 5000.1 Single User Db	Local Co-ordinate Reference:	Well FRYE NORTH 2
Company:	EXTRACTION OIL & GAS	TVD Reference:	KB-EST @ 4984.0usft (Original Well Elev)
Project:	WELD COUNTY, COLORADO (NAD 83)	MD Reference:	KB-EST @ 4984.0usft (Original Well Elev)
Site:	SEC. 29 T7N R67W 6th P.M.	North Reference:	True
Well:	FRYE NORTH 2	Survey Calculation Method:	Minimum Curvature
Wellbore:	ORIGINAL WELLBORE		
Design:	PROPOSAL #1		

Plan Annotations

MD (usft)	TVD (usft)	Local Coordinates		Comment
		+N/-S (usft)	+E/-W (usft)	
1,050.0	1,050.0	0.0	0.0	START NUDGE (2°/100ft BUR)
1,800.2	1,791.7	93.2	-29.4	EOB TO 15° INC
5,676.1	5,535.4	1,050.2	-330.9	END OF TANGENT
6,426.3	6,277.1	1,143.4	-360.3	EOD TO VERTICAL
6,456.3	6,307.1	1,143.4	-360.3	KOP (10°/100ft BUR)
7,356.3	6,880.0	1,139.6	212.6	7" ICP - FRYE NORTH 2
17,877.3	6,880.0	1,070.5	10,733.4	BHL - FRYE NORTH 2