

Company: Omimex Petroleum Inc

Well: Mailander 4-34-6-45

Field: Ballyneal

County: Phillips

State: Colorado

County: Phillips

Field: Ballyneal

Location: 481' FNL & 394' FWL

Well: Mailander 4-34-6-45

Company: Omimex Petroleum Inc

CEMENT BOND

GAMMA RAY

CASING COLLAR LOG

481' FNL & 394' FWL		Elev.: K.B. 3810.00 ft
		G.L. 3804.00 ft
		D.F.
Permanent Datum:	GROUND LEVEL	Elev.: 3752.00 ft
Log Measured From:	KELLY BUSHING	6.00 ft above Perm. Datum
Drilling Measured From:	KELLY BUSHING	
API Serial No. 05-095-06465	Section 34	Township 6N
		Range 45W

Logging Date 25-Nov-2014

Run Number 1

Depth Driller 2696 ft

Schlumberger Depth 2606 ft

Bottom Log Interval 2598 ft

Top Log Interval 0 ft

Casing Fluid Type WATER

Salinity

Density 8.4 lbm/gal

Fluid Level

BIT/CASING/TUBING STRING

Bit Size 6.250 in

From

To

Casing/Tubing Size 4.500 in

Weight 10.5 lbm/ft

Grade

From

To

Maximum Recorded Temperatures

Logger On Bottom 25-Nov-2014 10:57

Unit Number 354 FORT MORGAN

Recorded By C MARCH

Witnessed By JEREMY FISCHER

PVT DATA

Oil Density	Run 1	Run 2	Run 3
Water Salinity			
Gas Gravity			
Bo			
Bw			
1/Bg			
Bubble Point Pressure			
Bubble Point Temperature			
Solution GOR			
Maximum Deviation			

CEMENTING DATA

Primary/Squeeze	Primary		
Casing String No			
Lead Cement Type			
Volume			
Density			
Water Loss			
Additives			
Tail Cement Type			
Volume			
Density			
Water Loss			
Additives			
Expected Cement Top			

Logging Date

Run Number

Depth Driller

Schlumberger Depth

Bottom Log Interval

Top Log Interval

Casing Fluid Type

Salinity

Density

Fluid Level

BIT/CASING/TUBING STRING

Bit Size

From

To

Casing/Tubing Size

Weight

Grade

From

To

Maximum Recorded Temperatures

Logger On Bottom

Unit Number

Recorded By

Witnessed By

THE USE OF AND RELIANCE UPON THIS RECORDED-DATA BY THE HEREIN NAMED COMPANY (AND ANY OF ITS AFFILIATES, PARTNERS, REPRESENTATIVES, AGENTS, CONSULTANTS AND EMPLOYEES) IS SUBJECT TO THE TERMS AND CONDITIONS AGREED UPON BETWEEN SCHLUMBERGER AND THE COMPANY, INCLUDING: (a) RESTRICTIONS ON USE OF THE RECORDED-DATA; (b) DISCLAIMERS AND WAIVERS OF WARRANTIES AND REPRESENTATIONS REGARDING COMPANY'S USE OF AND RELIANCE UPON THE RECORDED-DATA; AND (c) CUSTOMER'S FULL AND SOLE RESPONSIBILITY FOR ANY INFERENCE DRAWN OR DECISION MADE IN CONNECTION WITH THE USE OF THIS RECORDED-DATA.

OS1: PERF
OS2:
OS3:
OS4:
OS5:

OS1:
OS2:
OS3:
OS4:
OS5:

CORRELATED TO TRIPLE COMBO RAN ON
21-NOV-2014 BY SCHLUMBERGER

THANK YOU

SERVICE ORDER #:
PROGRAM VERSION: 19C0-187
FLUID LEVEL:

SERVICE ORDER #:
PROGRAM VERSION:
FLUID LEVEL:

STOP

RUN 2

WITM-A
PSC 16MHZ

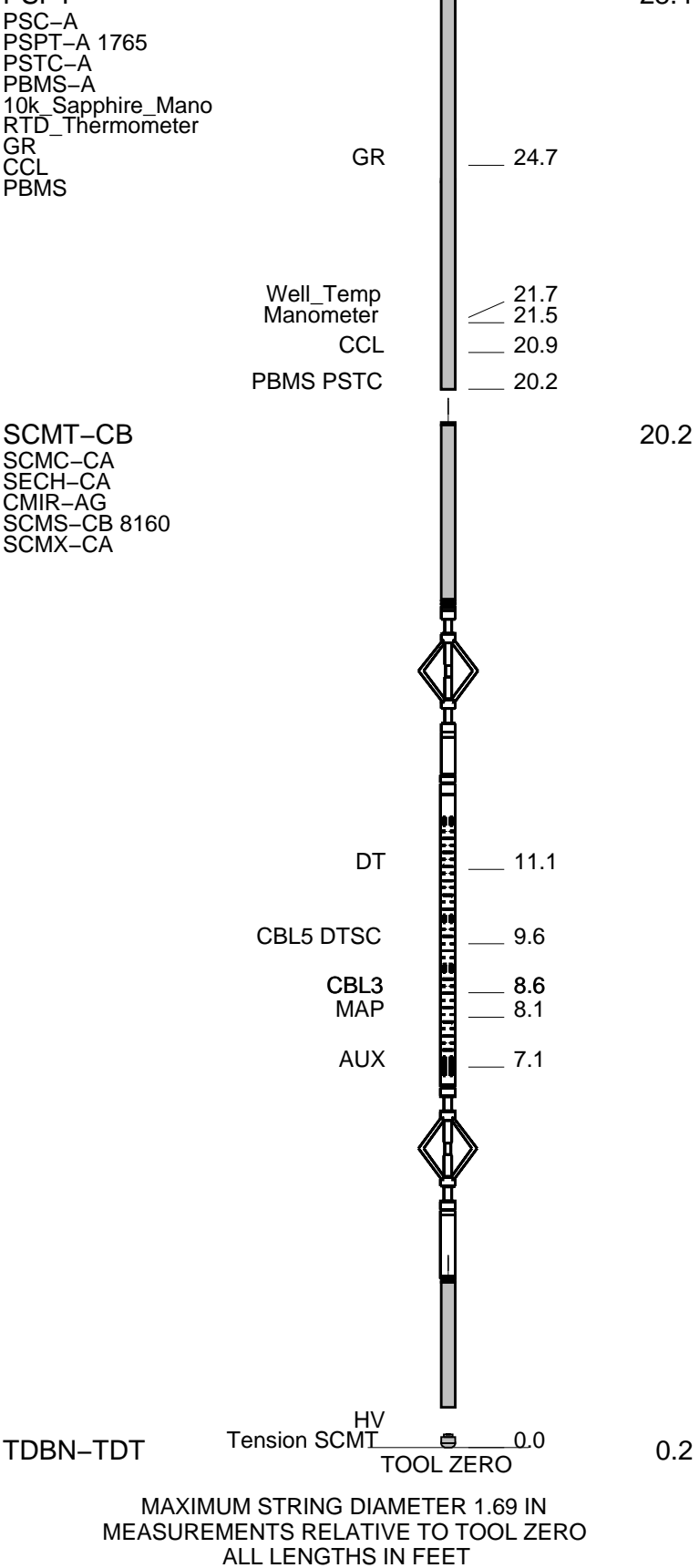
MH-22		30.3
MH-22		

AH-38	Detail MI TelStatus		28.7
-------	------------------------	---	------

PSPT CTEM 28.4 28.4

Detail MT
TelStatus
CTEM

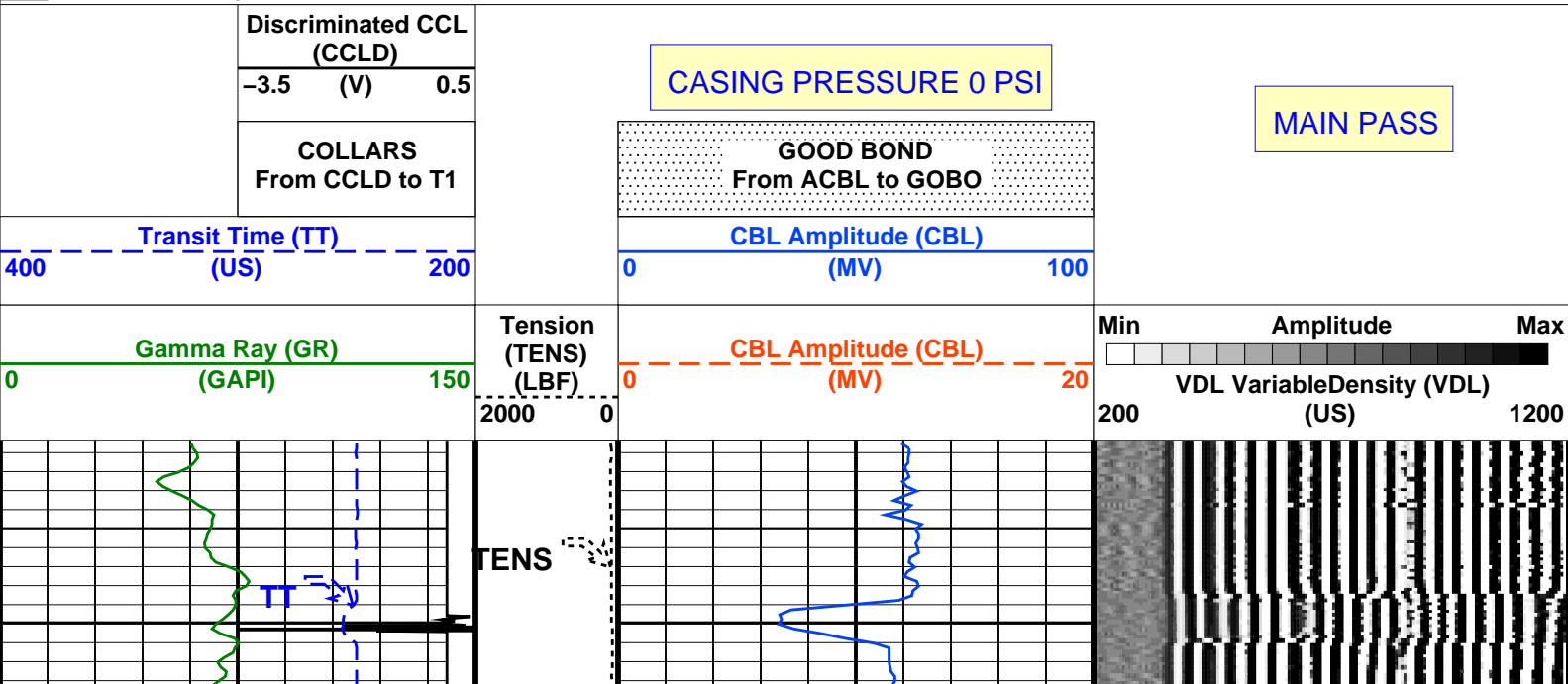
28.4

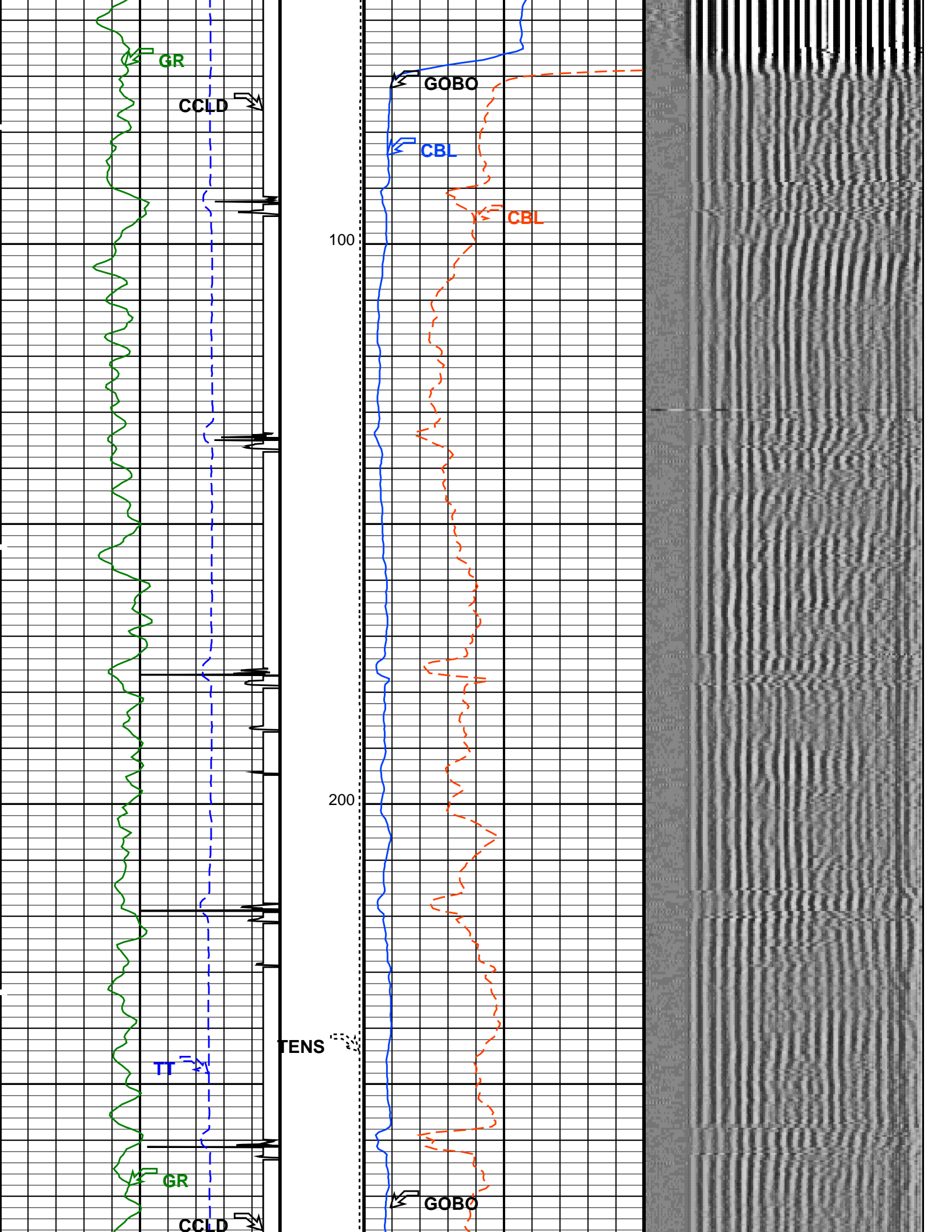


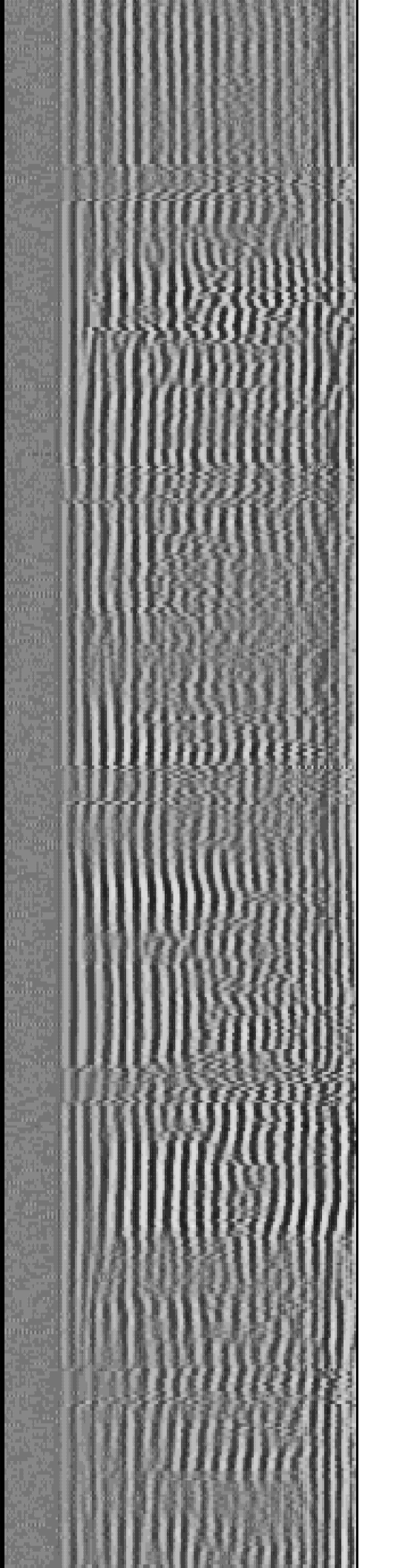
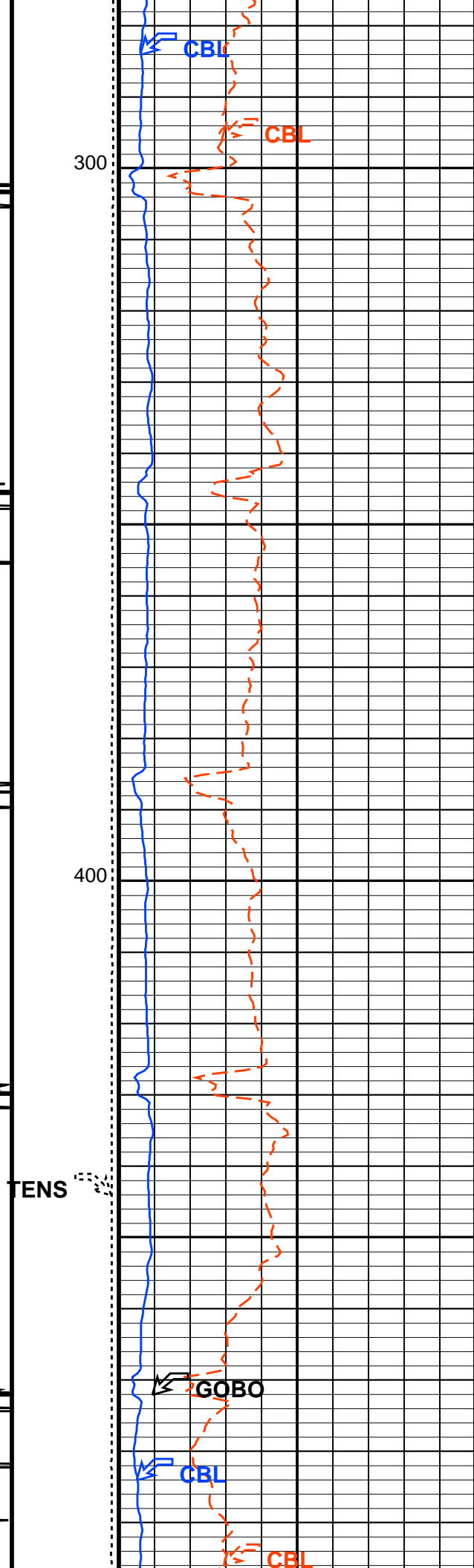
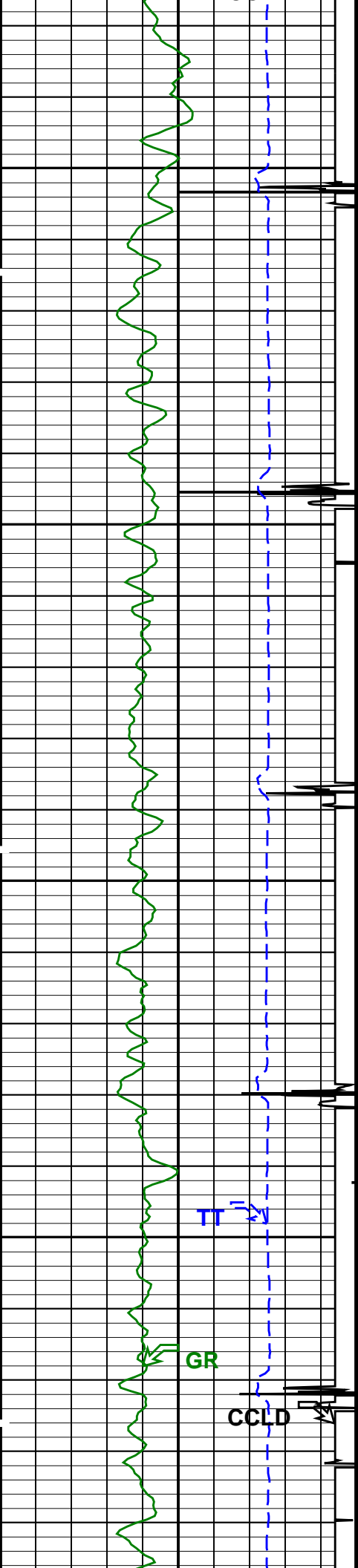
Input DLIS Files						
DEFAULT	SCMT_PSP_007LUP	FN:6	PRODUCER	25-Nov-2014 11:14	2618.0 FT	31.0 FT
Output DLIS Files						
DEFAULT	SCMT_PSP_010PUP	FN:9	PRODUCER	25-Nov-2014 11:51	2617.5 FT	30.5 FT

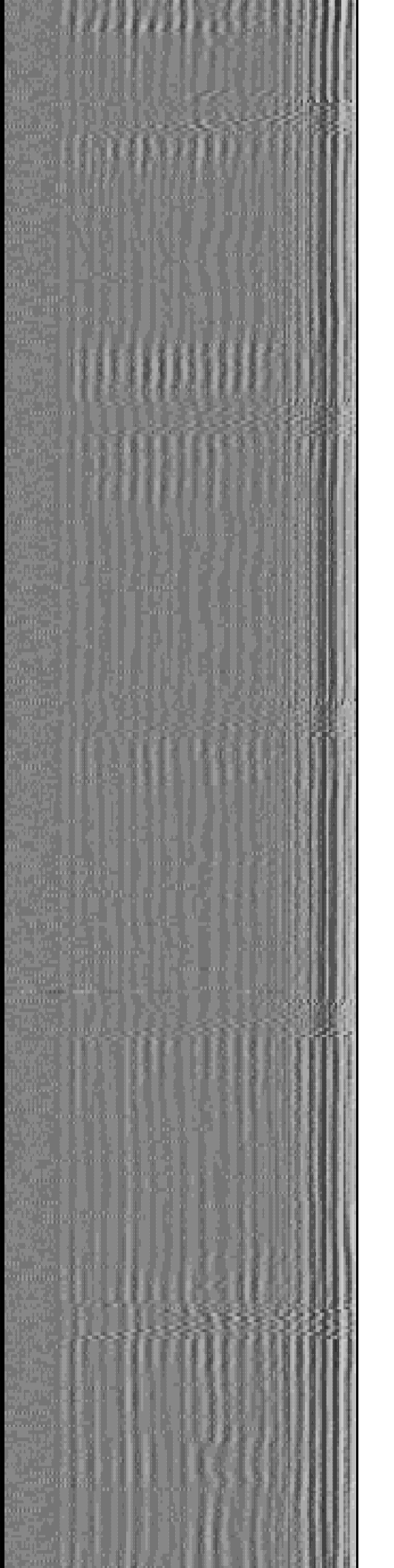
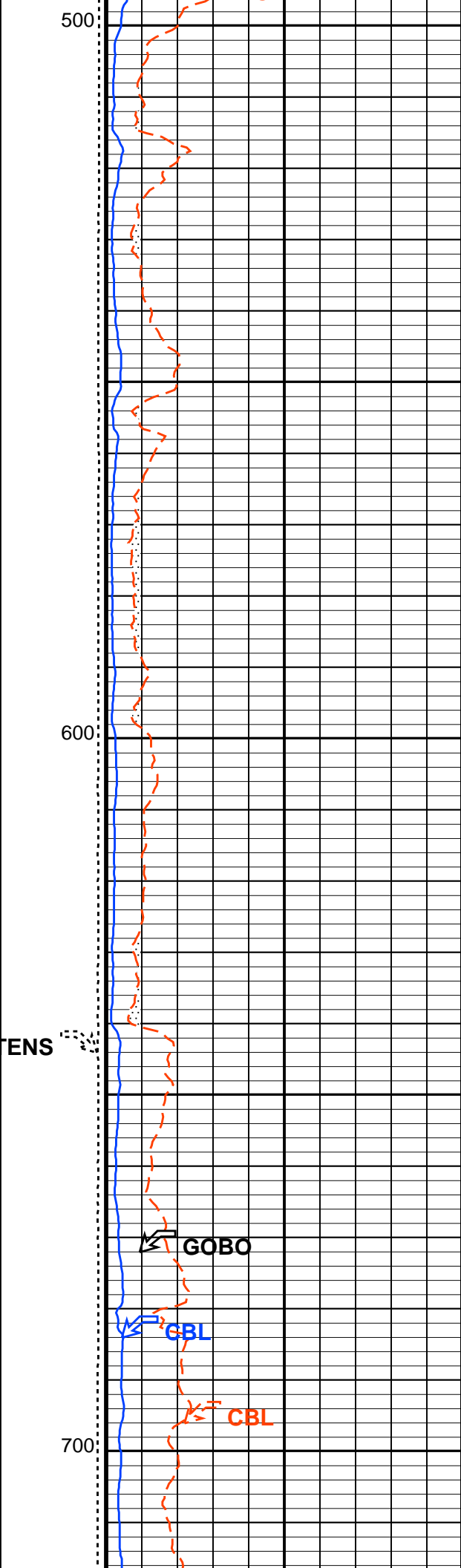
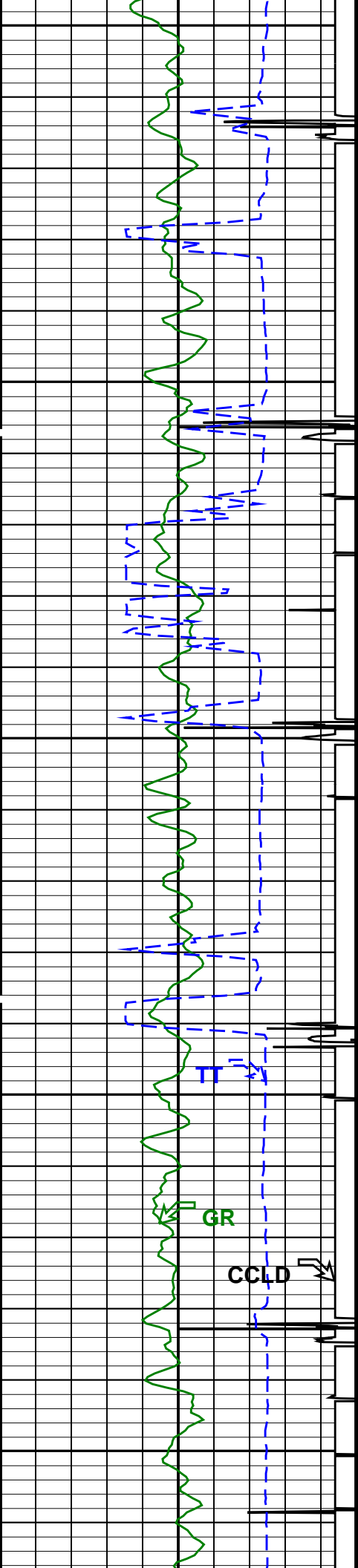
OP System Version: 19C0-187			
SCMT-CB	19C0-187	PSPT	19C0-187

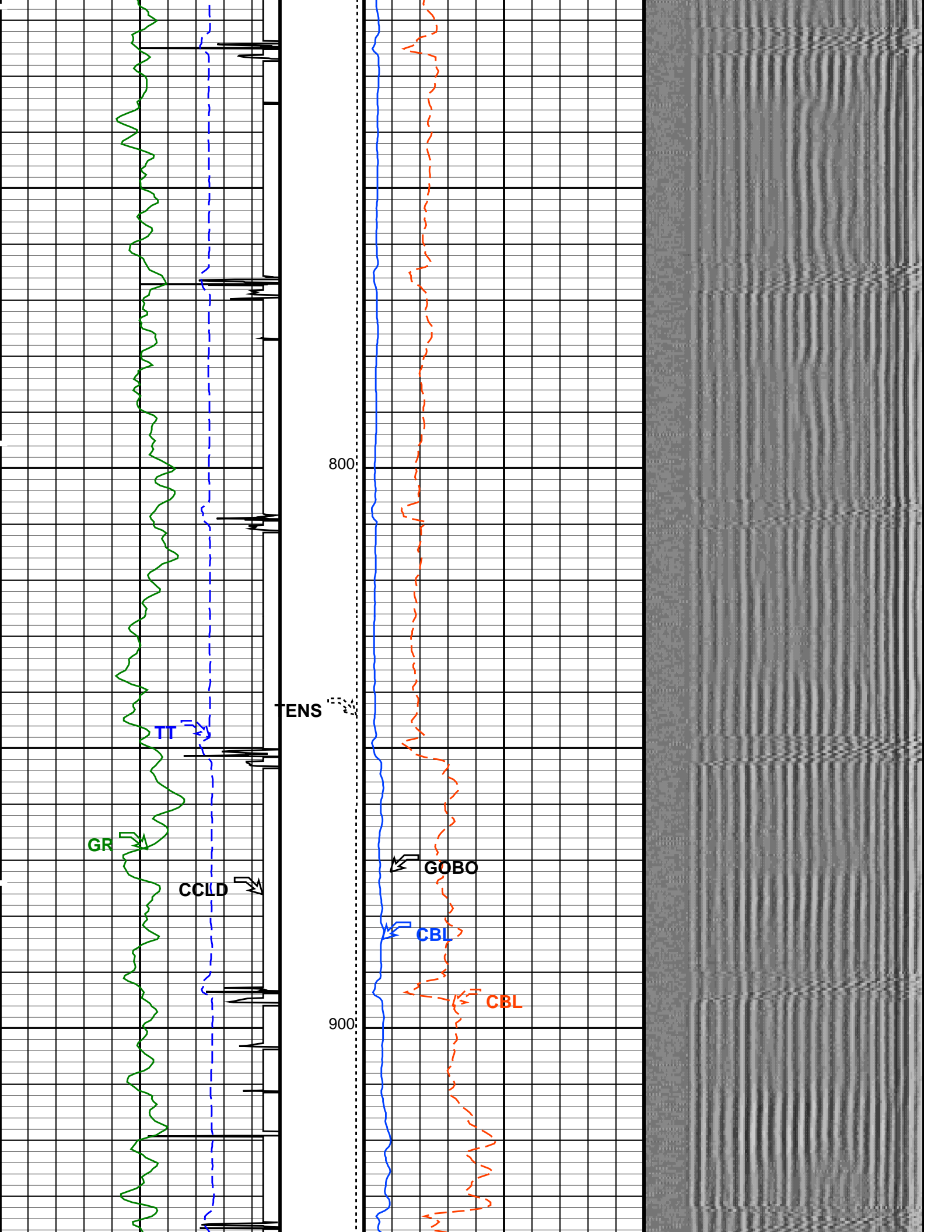
PIP SUMMARY	
<input checked="" type="checkbox"/> Time Mark Every 60 S	

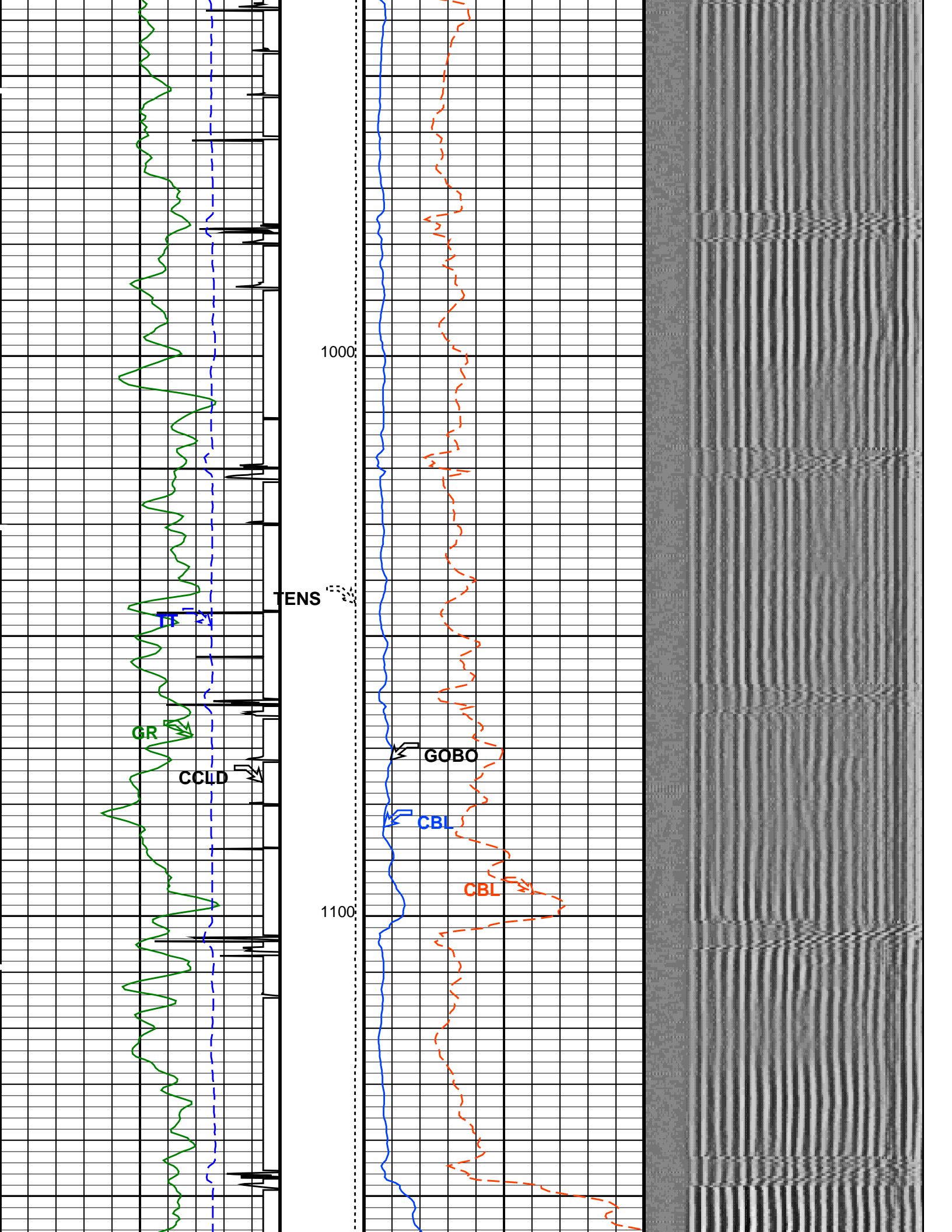


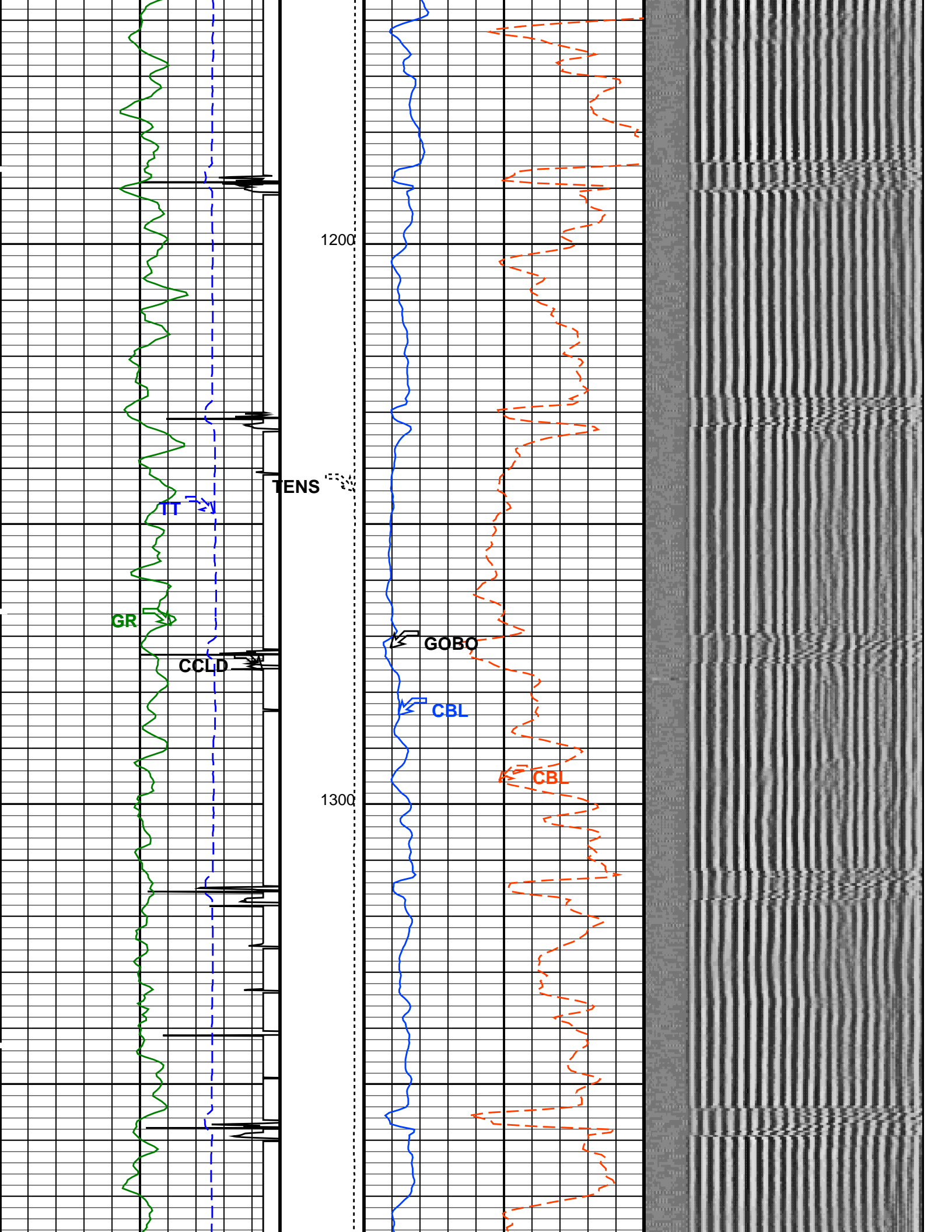


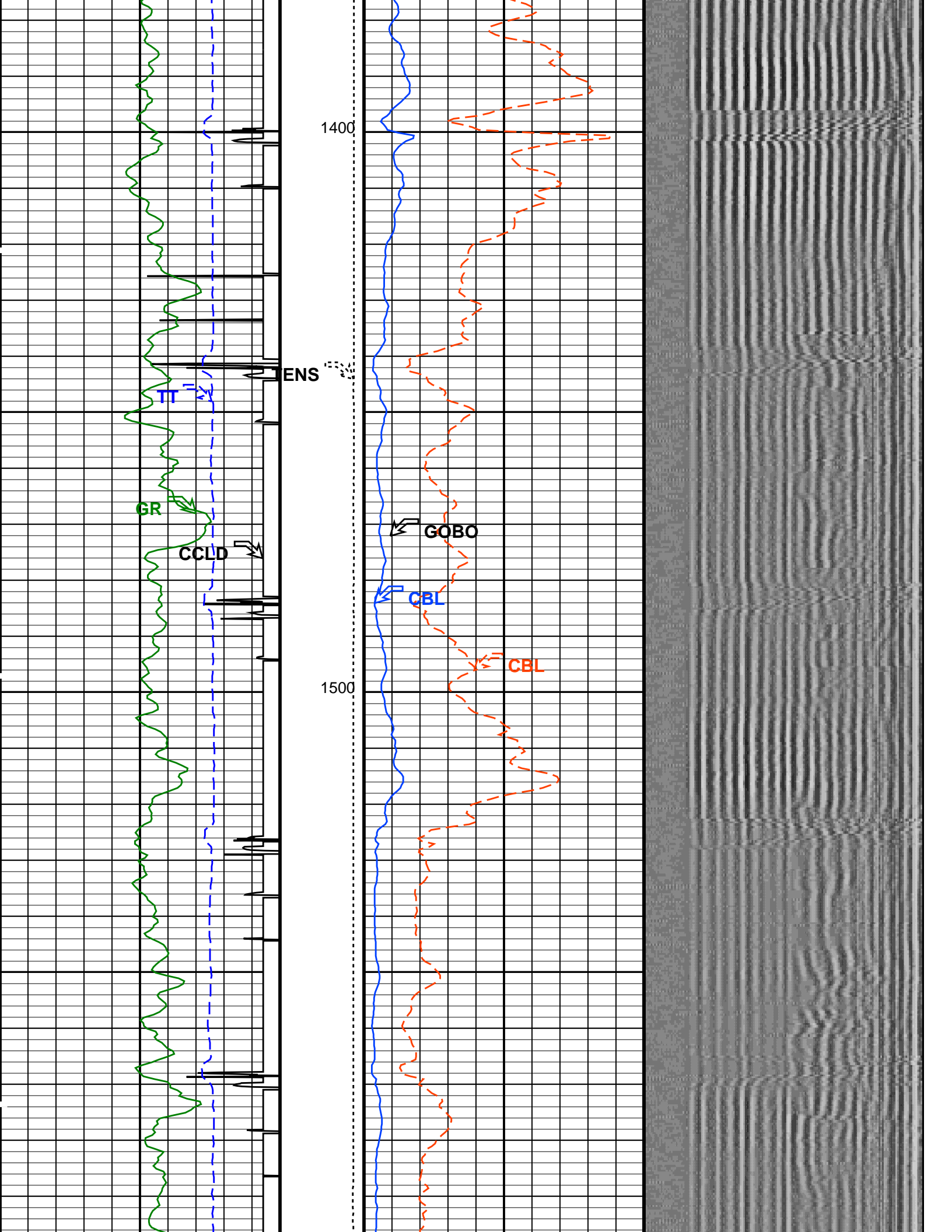


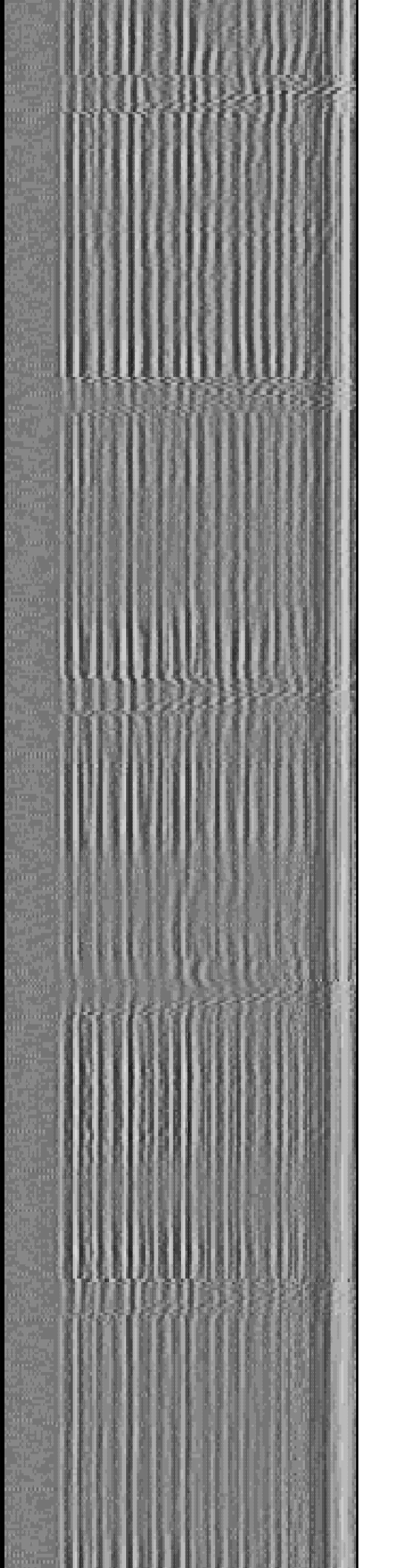
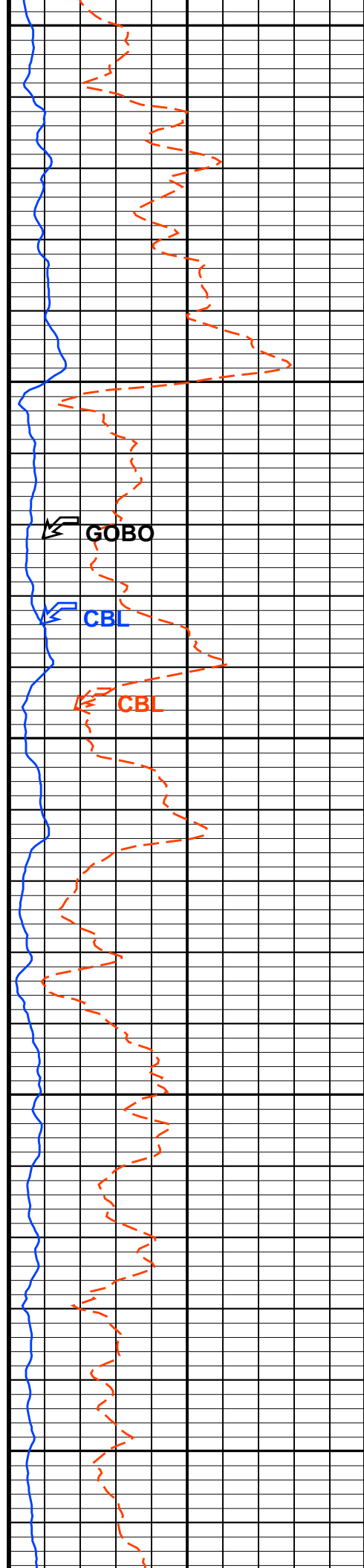
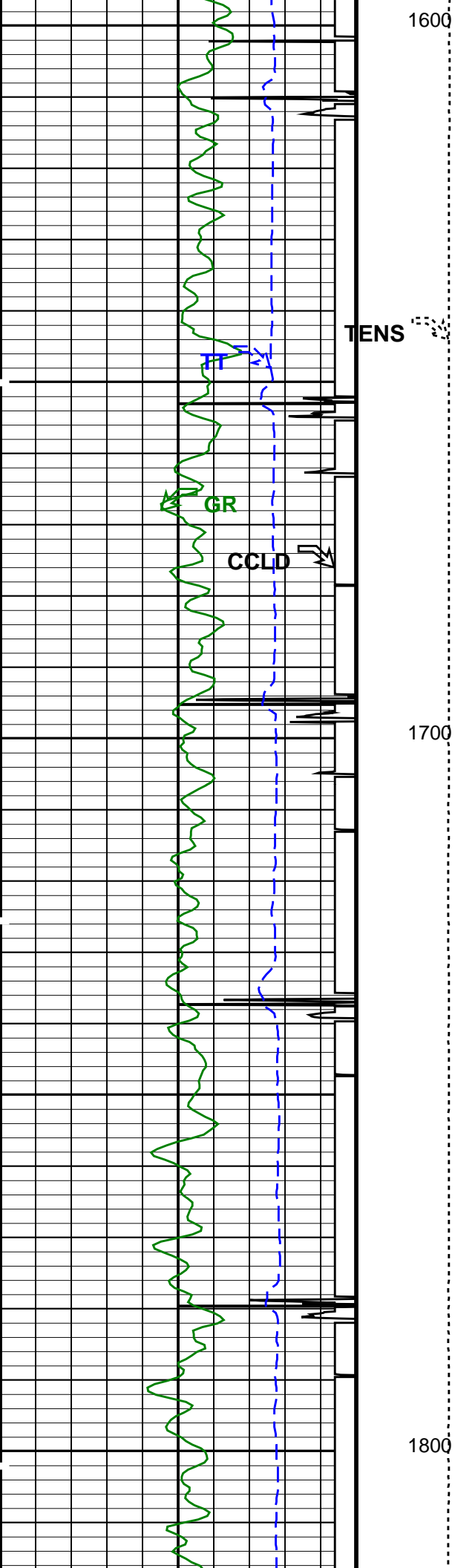


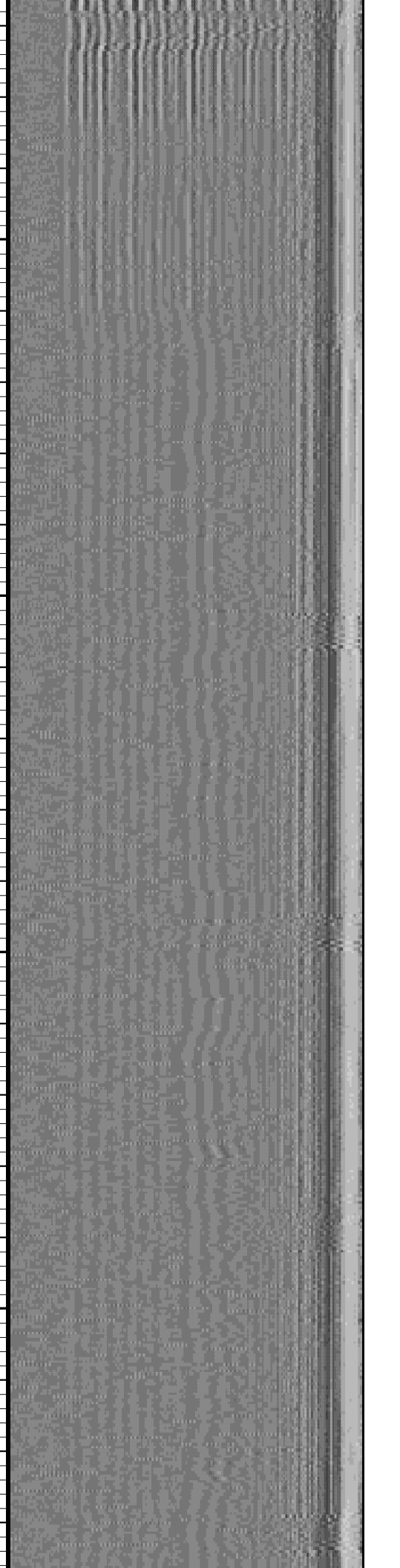
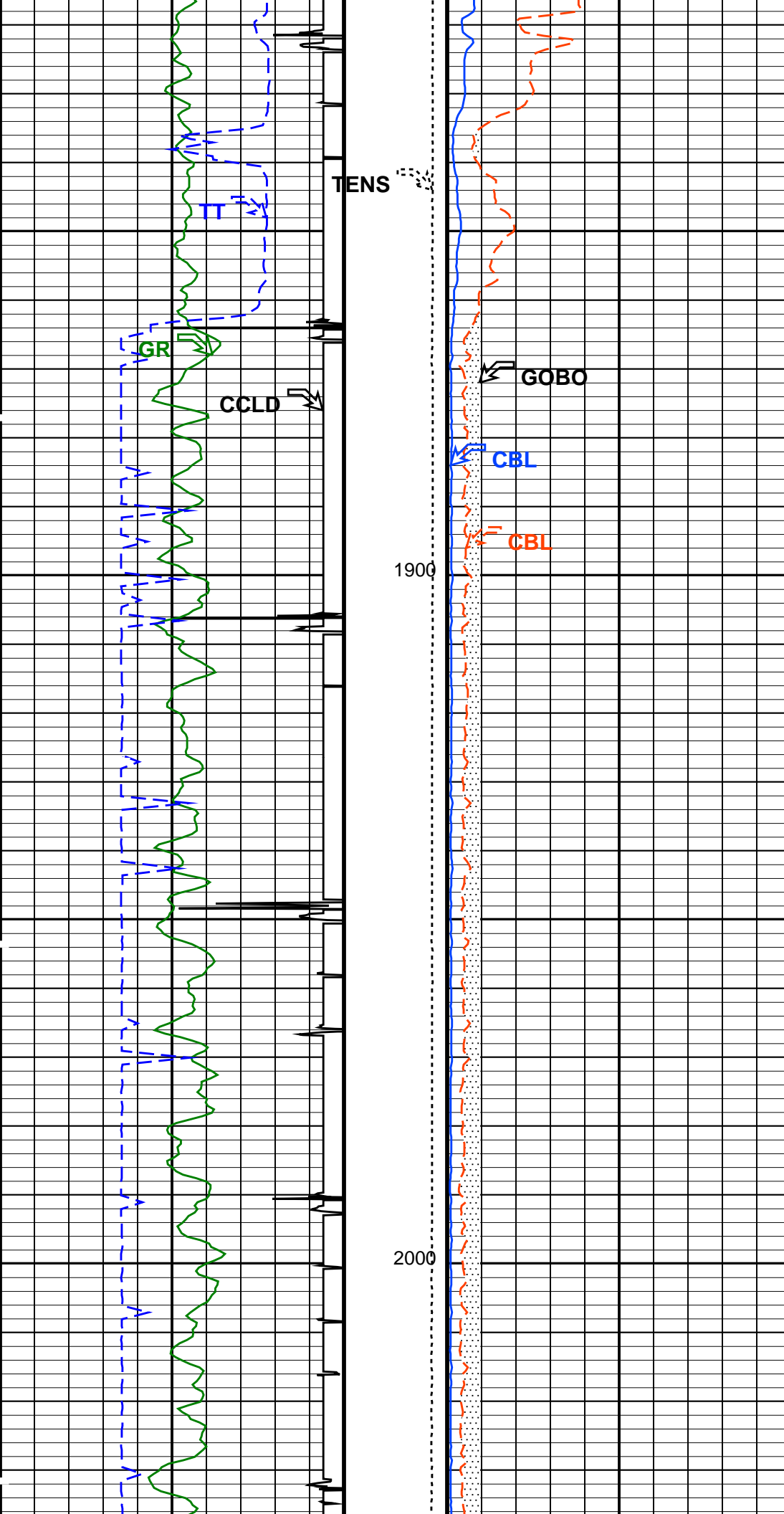


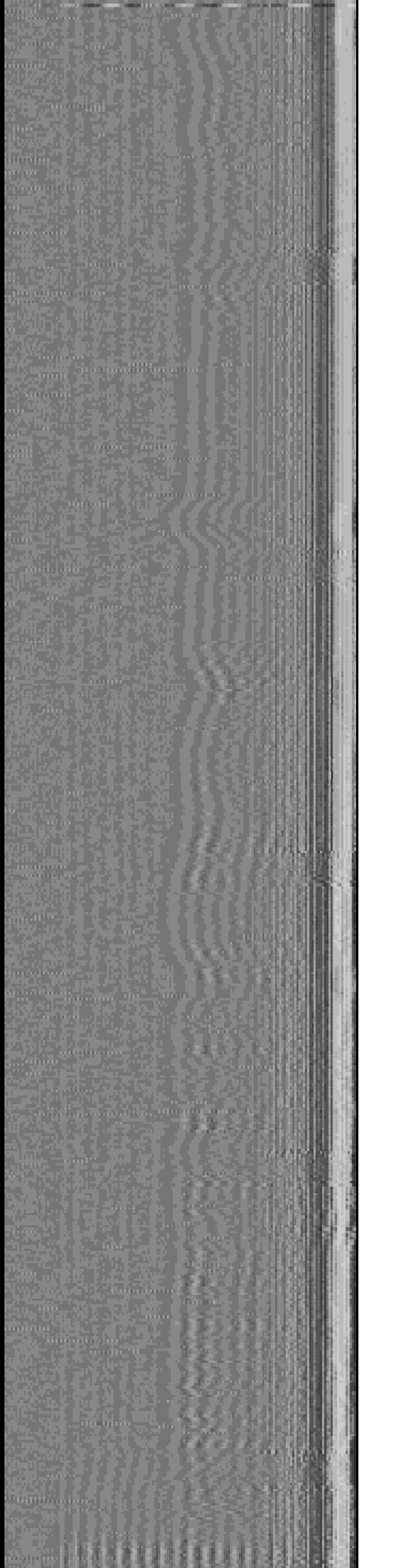
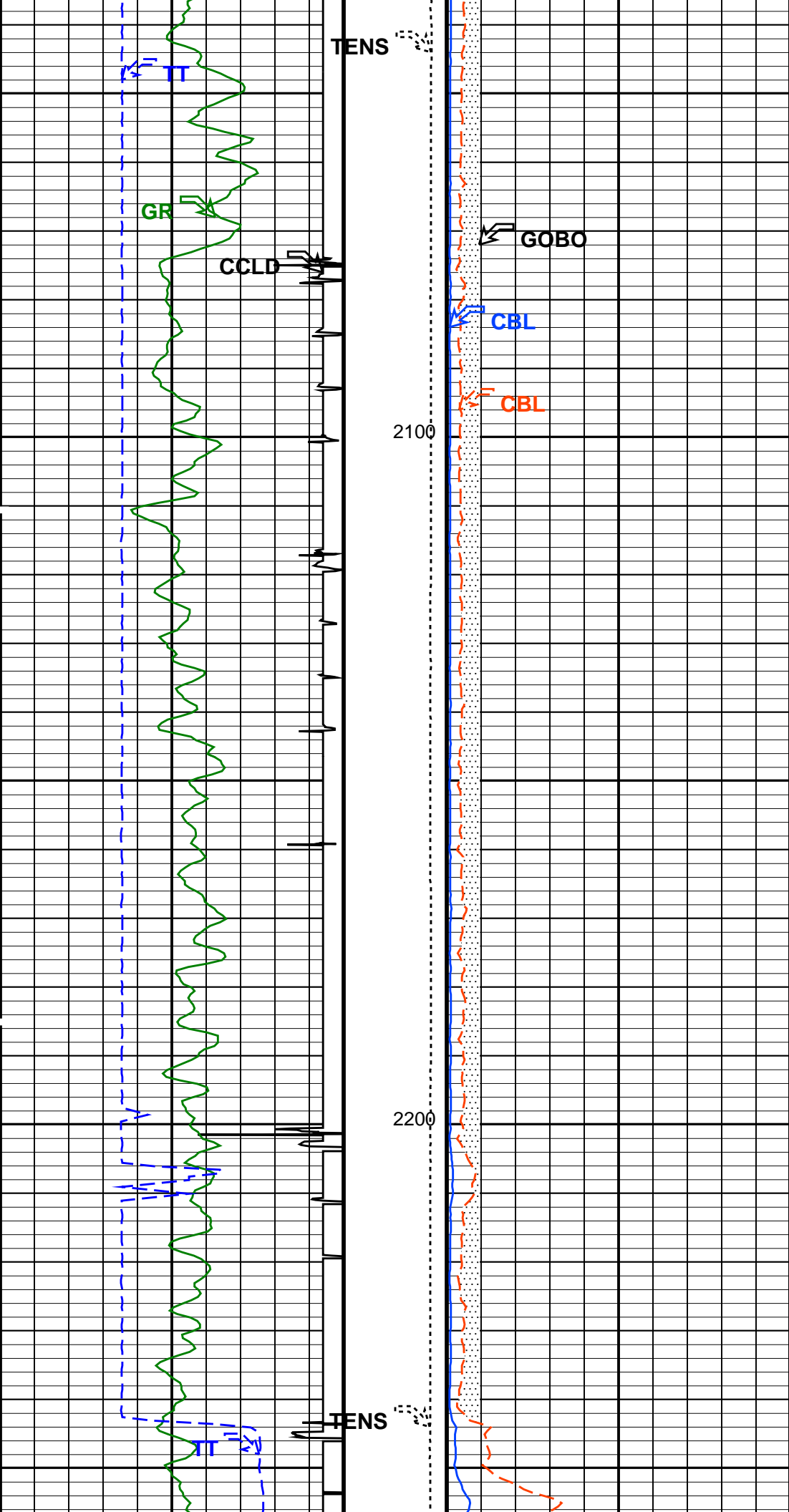


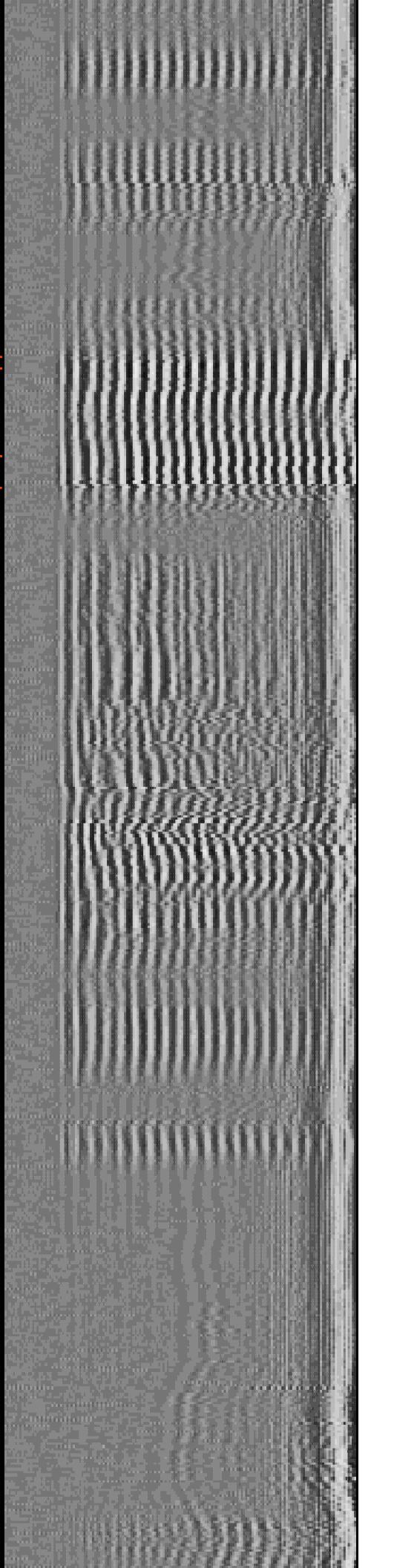
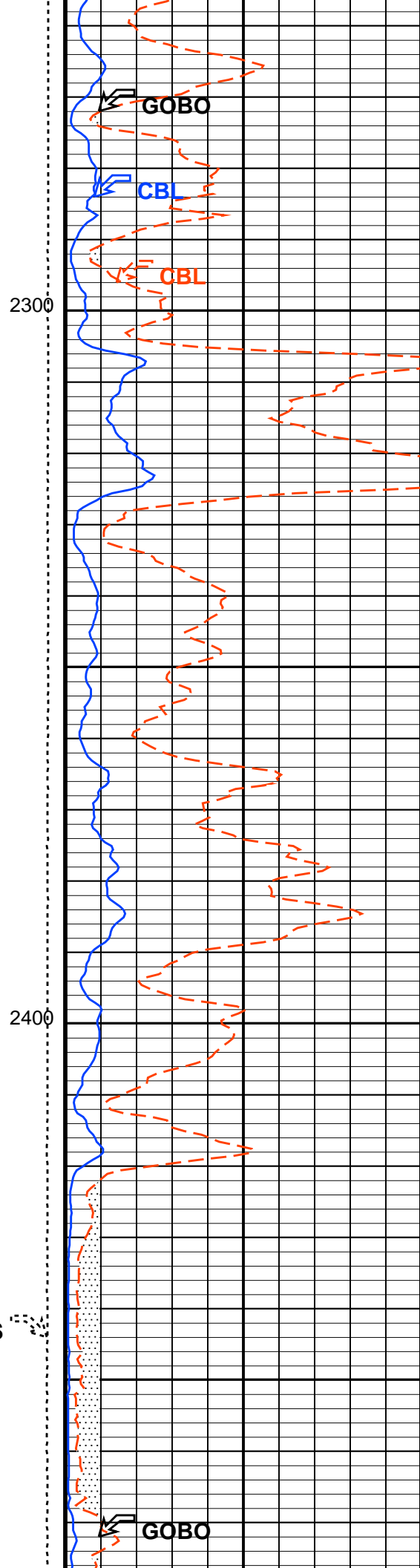
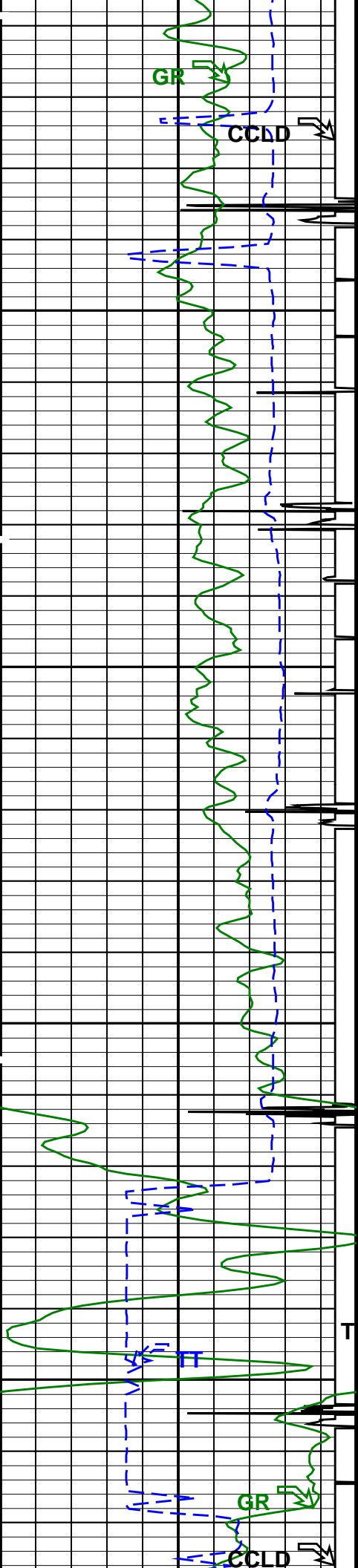












CB3T	SCMT CBL 3 ft Fixed Threshold Level	20	MV
CB5D	SCMT CBL 5 ft Peak Detection Mode	PEAK	
CB5G	SCMT CBL 5 ft Peak Detection T0_Delay and Noise Gate	343.263	US
CB5T	SCMT CBL 5 ft Fixed Threshold Level	20	MV
CBLG	CBL Gate Width	40	US
CBRA	CBL LQC Reference Amplitude in Free Pipe	79	MV
CMCF	CBL Cement Type Compensation Factor	1	
CMT	SCMT Slow Channel Multiplexer Mode	SCAN	
CMTM	SCMT Operating Mode	LOG	
CSCS	SCMT Slow Channel Index	VCC	
CTHI	Casing Thickness	0.229988	IN
DTF	Delta-T Fluid	204.5	US/F
FATT	Acoustic Attenuation due to Fluid	0	DB/F
FCF	CBL Fluid Compensation Factor	1	
GOBO	Good Bond	0.935443	MV
MAPD	SCMT MAP Peak Detection Mode	PEAK	
MAPG	SCMT MAP Peak Detection T0_Delay and Noise Gate	172.263	US
MAPT	SCMT MAP Fixed Threshold Level	30	MV
MATT	Maximum Attenuation	18.4392	DB/F
MCCF	MAP Cement Type Compensation Factor	1	
MCI	Minimum Cemented Interval for Isolation	1.25	FT
MMSA	MAP Minimum Sonic Amplitude	2.90666	MV
MSA	Minimum Sonic Amplitude	0.308578	MV
PEDE	Peak Detection On/Off Switch in Playback	OFF	
VDLG	VDL Manual Gain	5	
ZCMT	Acoustic Impedance of Cement	6.8	MRAY
System and Miscellaneous			
CSIZ	Current Casing Size	4.500	IN
CWEI	Casing Weight	10.50	LB/F
DFD	Drilling Fluid Density	8.40	LB/G
DO	Depth Offset for Playback	-0.7	FT
PP	Playback Processing	NORMAL	
TD	Total Depth	-50000	FT

Format: CBL_VDL Vertical Scale: 5" per 100' Graphics File Created: 25-Nov-2014 11:51

OP System Version: 19C0-187

SCMT-CB 19C0-187 PSPT 19C0-187

Input DLIS Files

DEFAULT SCMT_PSP_007LUP FN:6 PRODUCER 25-Nov-2014 11:14 2618.0 FT 31.0 FT

Output DLIS Files

DEFAULT SCMT_PSP_010PUP FN:9 PRODUCER 25-Nov-2014 11:51

Company: Omimex Petroleum Inc Well: Mailander 4-34-6-4

Input DLIS Files

DEFAULT SCMT_PSP_005LUP FN:4 PRODUCER 25-Nov-2014 11:06 2615.5 FT 2386.0 FT

Output DLIS Files

DEFAULT SCMT_PSP_006PUP FN:5 PRODUCER 25-Nov-2014 11:12 2616.5 FT 2387.0 FT

OP System Version: 19C0-187

SCMT-CB 19C0-187 PSPT 19C0-187

PIP SUMMARY

☒ Time Mark Every 60 S

Discriminated CCL
(CCLD)

-3.5 (V) 0.5

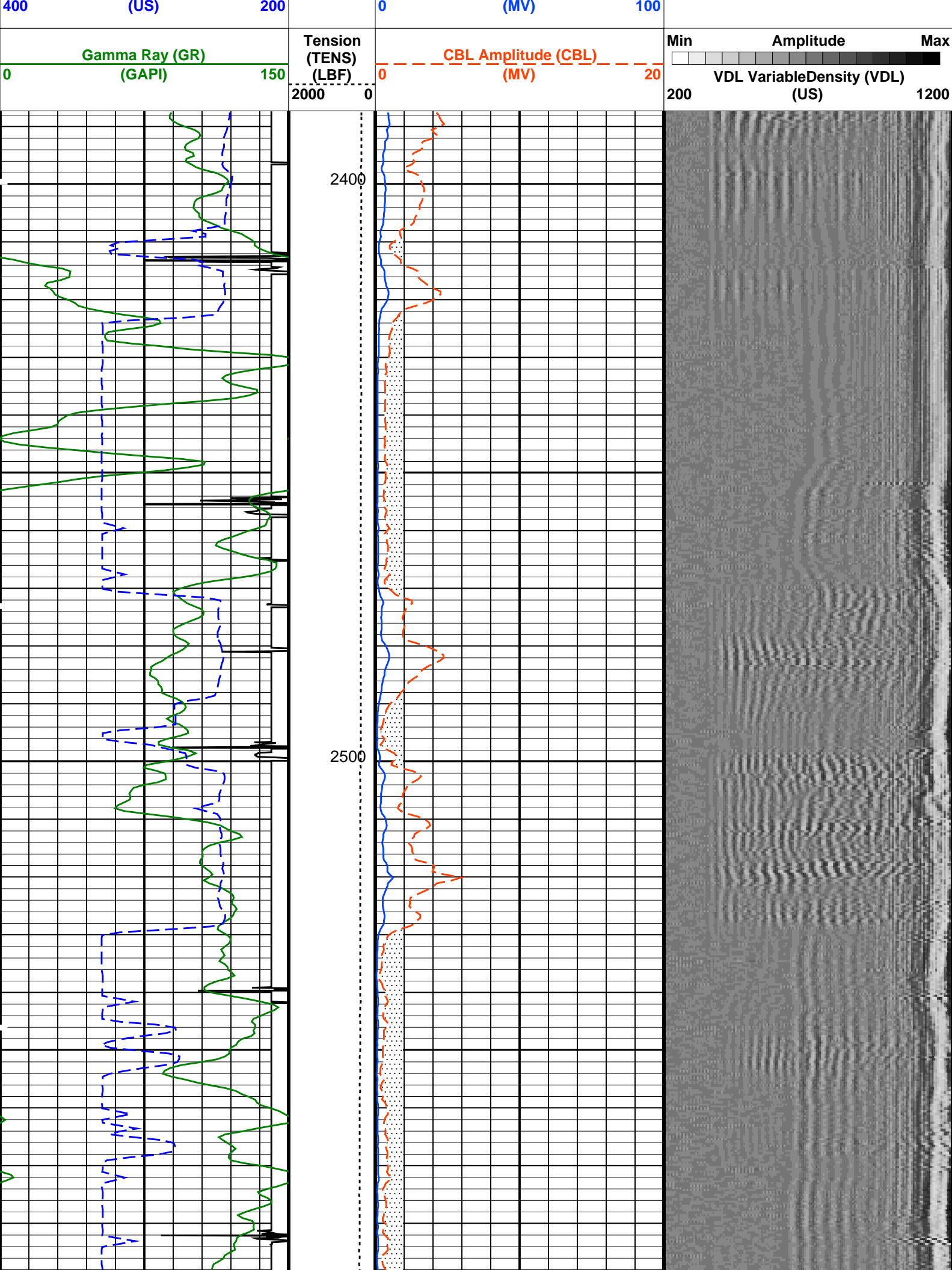
COLLARS
From CCLD to T1

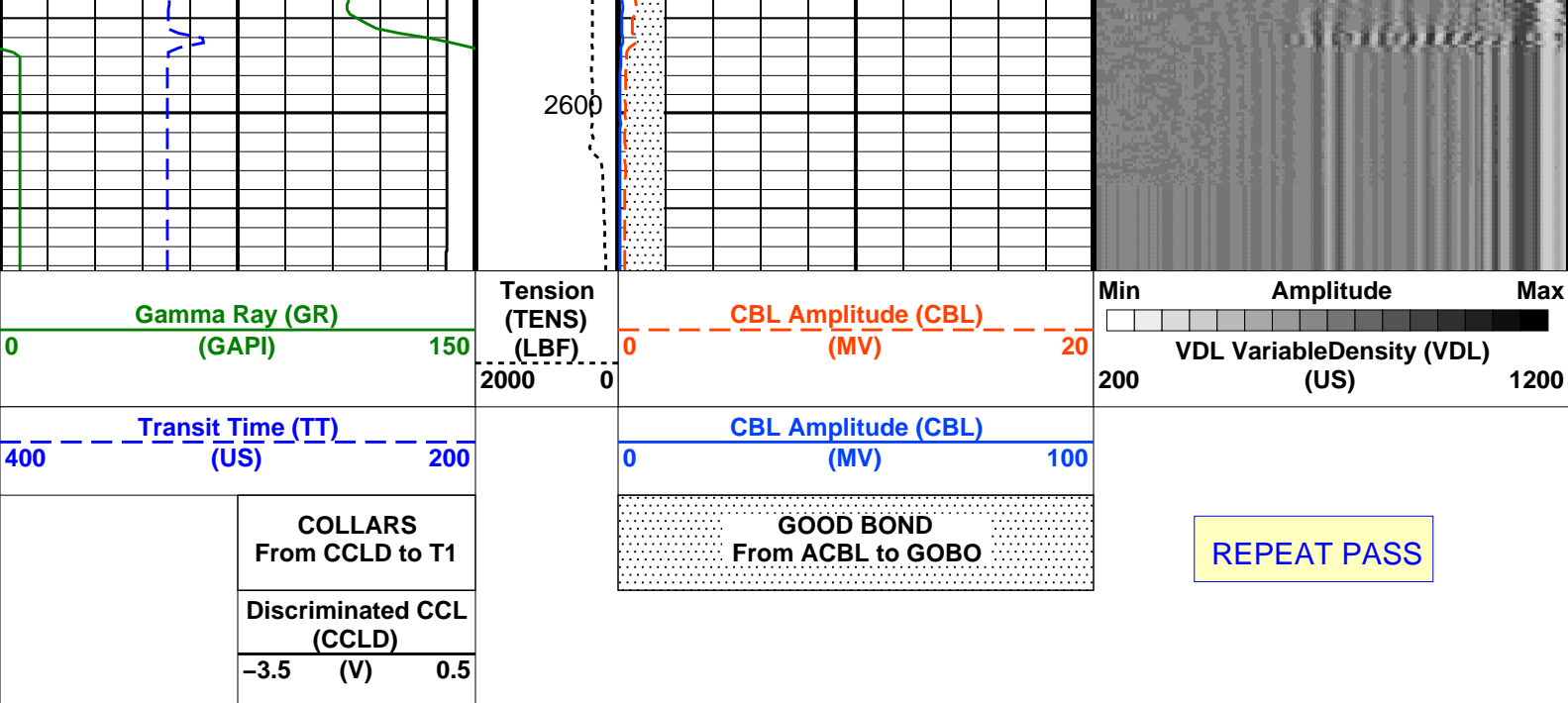
GOOD BOND
From ACBL to GOBO

REPEAT PASS

Transit Time (TT)

CBL Amplitude (CBL)





PIP SUMMARY

Time Mark Every 60 S

Parameters

DLIS Name	Description	Value
SCMT-CB: Slim Cement Mapping Tool, 1-11/16 OD		
BILI	Bond Index Level for Zone Isolation	0.8
CB3D	SCMT CBL 3 ft Peak Detection Mode	PEAK
CB3G	SCMT CBL 3 ft Peak Detection T0_Delay and Noise Gate	229.263 US
CB3T	SCMT CBL 3 ft Fixed Threshold Level	20 MV
CB5D	SCMT CBL 5 ft Peak Detection Mode	PEAK
CB5G	SCMT CBL 5 ft Peak Detection T0_Delay and Noise Gate	343.263 US
CB5T	SCMT CBL 5 ft Fixed Threshold Level	20 MV
CBLG	CBL Gate Width	40 US
CBRA	CBL LQC Reference Amplitude in Free Pipe	79 MV
CMCF	CBL Cement Type Compensation Factor	1
CMTM	SCMT Slow Channel Multiplexer Mode	SCAN
CSCS	SCMT Operating Mode	LOG
CTHI	SCMT Slow Channel Index	VCC
DTF	Casing Thickness	0.229988 IN
FATT	Delta-T Fluid	204.5 US/F
FCF	Acoustic Attenuation due to Fluid	0 DB/F
GOBO	CBL Fluid Compensation Factor	1
MAPD	Good Bond	0.935443 MV
MAPG	SCMT MAP Peak Detection Mode	PEAK
MAPT	SCMT MAP Peak Detection T0_Delay and Noise Gate	172.263 US
MATT	SCMT MAP Fixed Threshold Level	30 MV
MCCF	Maximum Attenuation	18.4392 DB/F
MCI	MAP Cement Type Compensation Factor	1
MMSA	Minimum Cemented Interval for Isolation	1.25 FT
MSA	MAP Minimum Sonic Amplitude	2.90666 MV
PEDE	Minimum Sonic Amplitude	0.308578 MV
VDLG	Peak Detection On/Off Switch in Playback	OFF
ZCMT	VDL Manual Gain	5
	Acoustic Impedance of Cement	6.8 MRAY
System and Miscellaneous		
CSIZ	Current Casing Size	4.500 IN
CWEI	Casing Weight	10.50 LB/F
DFD	Drilling Fluid Density	8.40 LB/G
DO	Depth Offset for Playback	1.2 FT
PP	Playback Processing	NORMAL
TD	Total Depth	-50000 FT

Format: CBL_VDL Vertical Scale: 5" per 100'

Graphics File Created: 25-Nov-2014 11:12

OP System Version: 19C0-187

SCMT-CB 19C0-187 PSPT 19C0-187

Input DLIS Files

Input DLIS Files

DEFAULT	SCMT_PSP_005LUP	FN:4	PRODUCER	25-Nov-2014 11:06	2615.5 FT	2386.0 FT
---------	-----------------	------	----------	-------------------	-----------	-----------

Output DLIS Files

DEFAULT	SCMT_PSP_006PUP	FN:5	PRODUCER	25-Nov-2014 11:12
---------	-----------------	------	----------	-------------------

Company:

Well:

Field:

County:

State:

Omimex Petroleum Inc

Mailander 4-34-6-45

Ballyneal

Phillips

Colorado

Schlumberger

CEMENT BOND

GAMMA RAY

CASING COLLAR LOG