

EXTRACTION OIL & GAS

WELD COUNTY, COLORADO (NAD 83)

SEC. 35 T5N R68W 6th P.M.

JOHNSONS CORNER 13

ORIGINAL WELLBORE

14 August, 2014

Plan: PROPOSAL #1

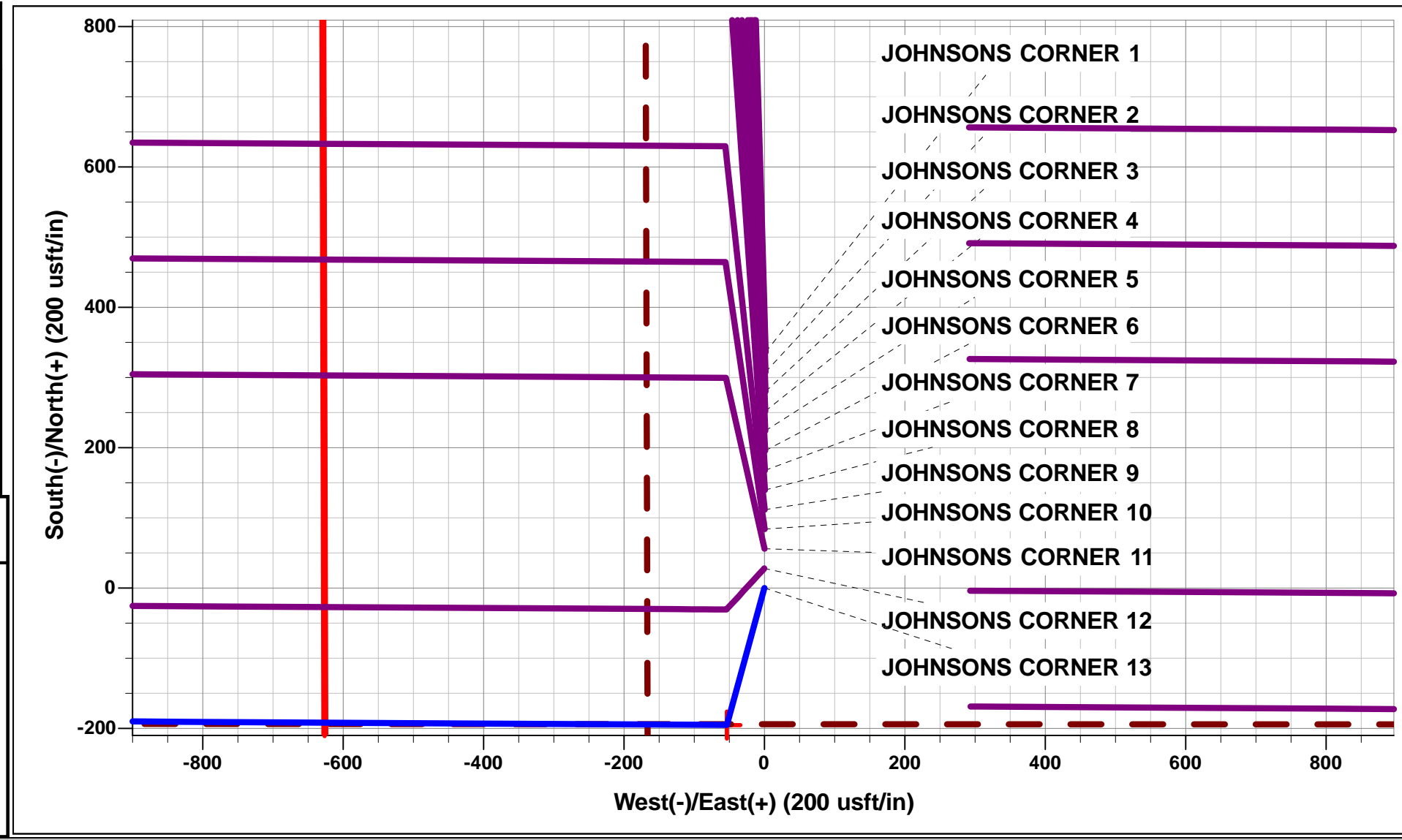




Project: WELD COUNTY, COLORADO (NAD 83)
Site: SEC. 35 T5N R68W 6th P.M.
Well: JOHNSONS CORNER 13
Wellbore: ORIGINAL WELLBORE
Design: PROPOSAL #1

ANNOTATIONS										
TVD	MD	Inc	Azi	+N/-S	+E/-W	VSect	Dep	Annotation		
950.0	950.0	0.00	0.00	0.0	0.0	0.0	0.0	START NUDGE (2°/100ft BUR)		
1199.7	1200.0	5.00	195.29	-10.5	-2.9	3.1	10.9	EOB TO 5° INC		
3261.3	3269.5	5.00	195.29	-184.5	-50.4	54.0	191.3	END OF TANGENT		
3511.0	3519.5	0.00	0.00	-195.0	-53.3	57.1	202.2	EOD TO VERTICAL		
6593.0	6601.5	0.00	0.00	-195.0	-53.3	57.1	202.2	KOP (10°/100ft BUR)		
7166.0	7501.5	90.00	270.34	-191.6	-626.2	629.9	775.1	7" ICP - JOHNSONS CORNER 13		
7166.0	14508.7	90.00	270.34	-150.0	-7633.3	7634.8	7782.3	BHL - JOHNSONS CORNER 13		

WELLBORE TARGET DETAILS (LAT/LONG)					
Name	TVD	+N/-S	+E/-W	Latitude	Longitude
KOP - JOHNSONS CORNER 13	6593.0	-195.0	-53.3	40.356403	-104.973609
7" ICP - JOHNSONS CORNER 13	7166.0	-191.6	-626.2	40.356412	-104.975665
BHL - JOHNSONS CORNER 13	7166.0	-150.0	-7633.3	40.356523	-105.000807



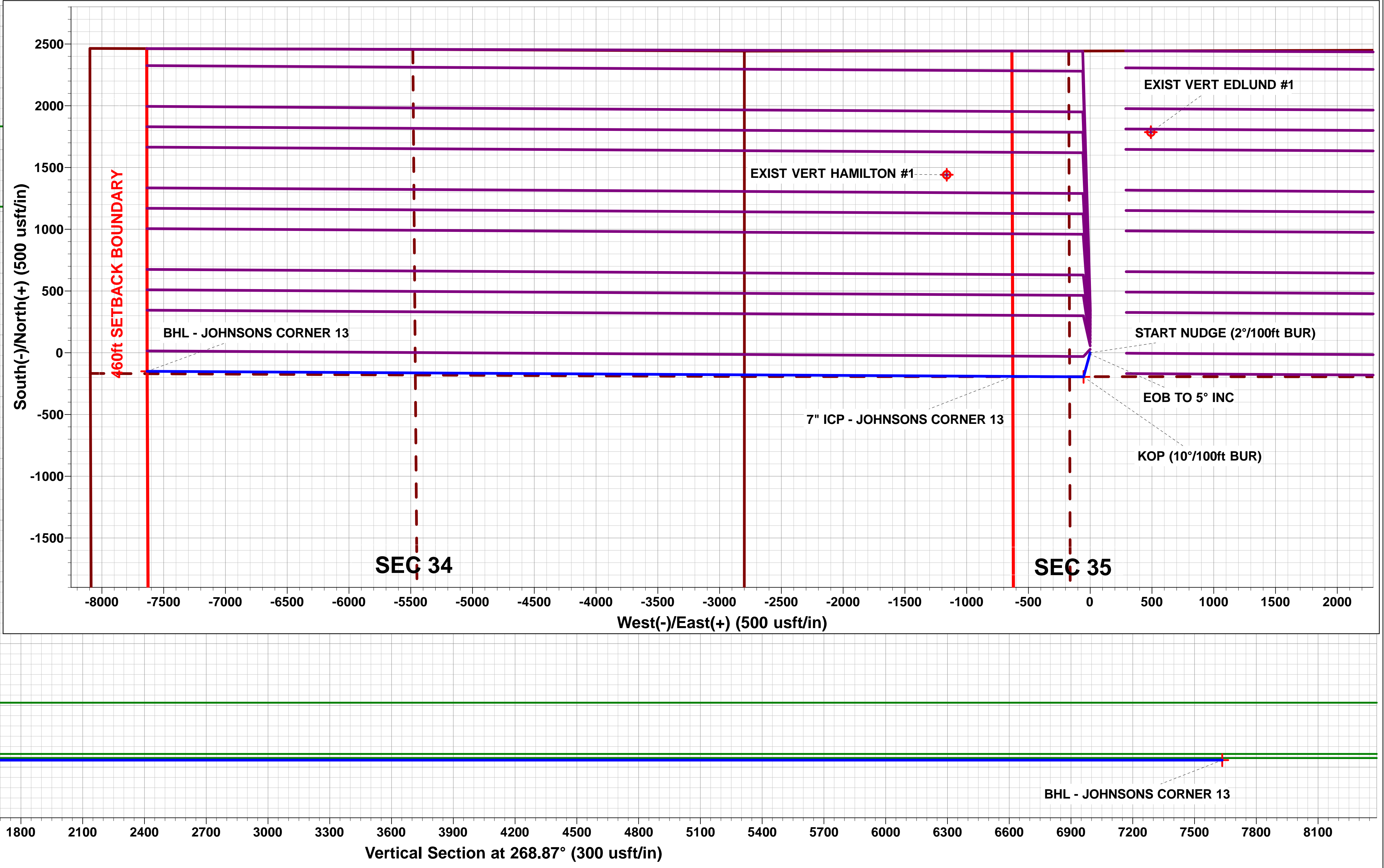
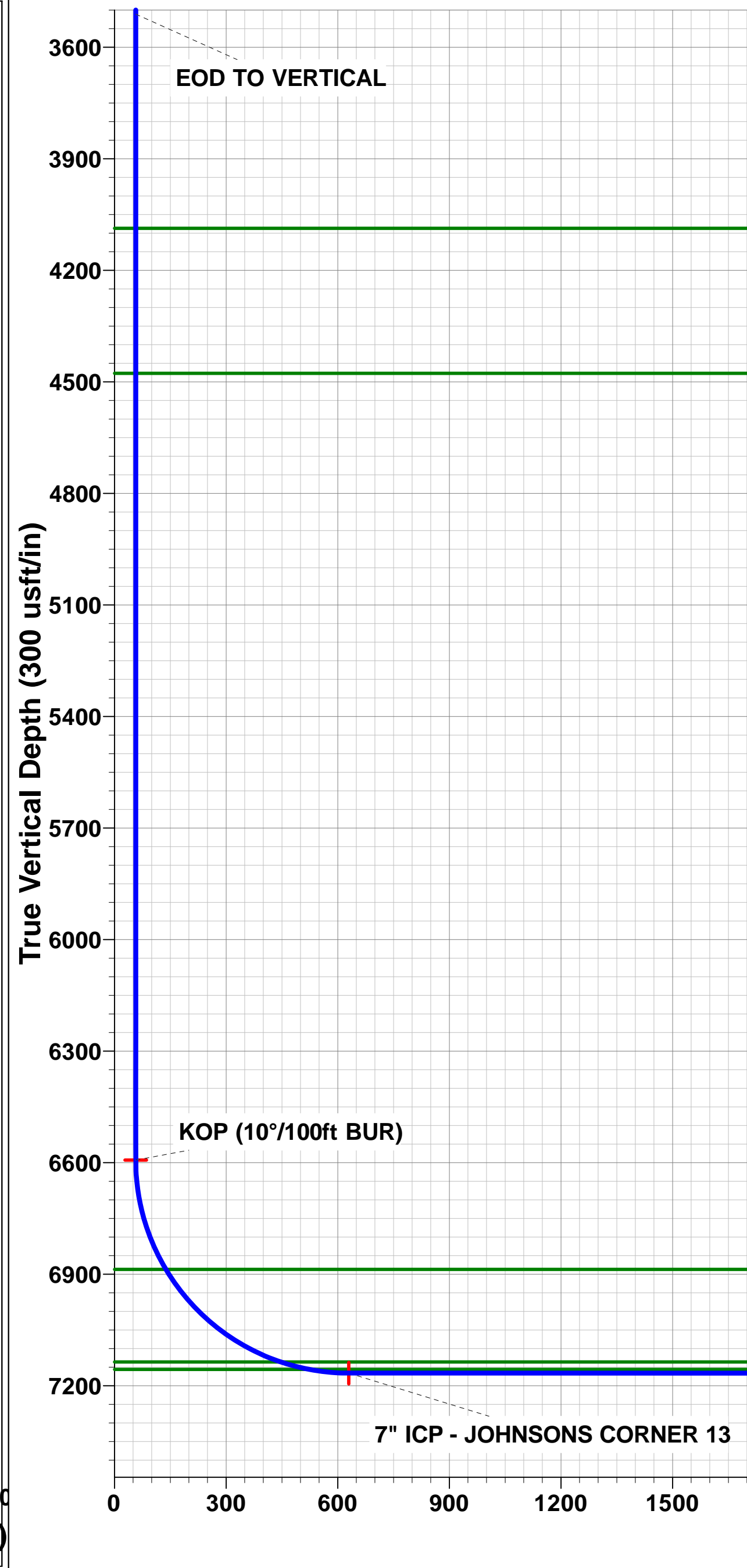
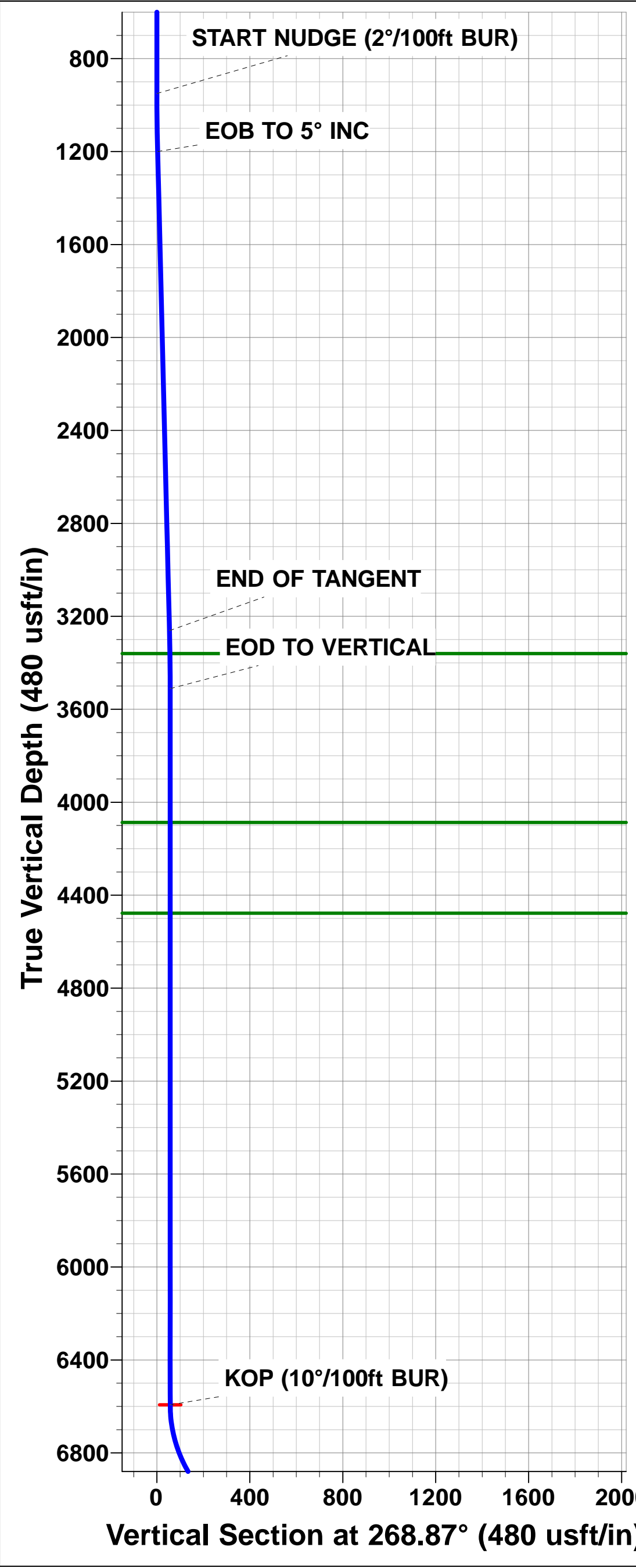
FORMATION TOP DETAILS		
TVDPath	MDPath	Formation
3360.0	3368.4	PARKMAN
4087.0	4095.5	SUSSEX
4477.0	4485.5	SHANNON
6887.0	6910.2	NIOBRARA
7136.0	7315.3	FORT HAYS
7156.0	7394.4	CODELL

T

M

Azimuths to True North
Magnetic North: 8.55°

Magnetic Field
Strength: 52751.8nT
Dip Angle: 66.87°
Date: 14/08/2014
Model: IGRF2010



Planning Report



Database:	EDM 5000.1 Single User Db	Local Co-ordinate Reference:	Well JOHNSONS CORNER 13
Company:	EXTRACTION OIL & GAS	TVD Reference:	KB @ 5033.0usft (Original Well Elev)
Project:	WELD COUNTY, COLORADO (NAD 83)	MD Reference:	KB @ 5033.0usft (Original Well Elev)
Site:	SEC. 35 T5N R68W 6th P.M.	North Reference:	True
Well:	JOHNSONS CORNER 13	Survey Calculation Method:	Minimum Curvature
Wellbore:	ORIGINAL WELLBORE		
Design:	PROPOSAL #1		

Project	WELD COUNTY, COLORADO (NAD 83)		
Map System:	US State Plane 1983	System Datum:	Mean Sea Level
Geo Datum:	North American Datum 1983		
Map Zone:	Colorado Northern Zone		Using geodetic scale factor

Site	SEC. 35 T5N R68W 6th P.M.		
Site Position:		Northing:	1,373,645.09 usft
From:	Lat/Long	Easting:	3,146,750.79 usft
Position Uncertainty:	0.0 usft	Slot Radius:	1.10000ft
		Latitude:	40.357861
		Longitude:	-104.973411
		Grid Convergence:	0.34 °

Well	JOHNSONS CORNER 13		
Well Position	+N/-S	-336.3 usft	Northing:
	+E/-W	-2.0 usft	Easting:
Position Uncertainty		0.0 usft	Wellhead Elevation:
			Latitude:
			Longitude:
			Ground Level:

Wellbore	ORIGINAL WELLBORE				
Magnetics	Model Name	Sample Date	Declination (°)	Dip Angle (°)	Field Strength (nT)
	IGRF2010	14/08/2014	8.55	66.87	52,752

Design	PROPOSAL #1			
Audit Notes:				
Version:	Phase:	PROTOTYPE	Tie On Depth:	0.0
Vertical Section:	Depth From (TVD) (usft)	+N/-S (usft)	+E/-W (usft)	Direction (°)
	7,166.0	0.0	0.0	268.87

Plan Sections											
MD (usft)	Inc (°)	Azi (°)	Vertical Depth	SS (usft)	+N/-S (usft)	+E/-W (usft)	Dogleg Rate (°/100usf)	Build Rate (°/100usf)	Turn Rate (°/100usf)	TFO (°)	Target
0.0	0.00	0.00	0.0	-5,033.0	0.0	0.0	0.00	0.00	0.00	0.00	
950.0	0.00	0.00	950.0	-4,083.0	0.0	0.0	0.00	0.00	0.00	0.00	
1,200.0	5.00	195.29	1,199.7	-3,833.3	-10.5	-2.9	2.00	2.00	0.00	195.29	
3,269.5	5.00	195.29	3,261.3	-1,771.7	-184.5	-50.4	0.00	0.00	0.00	0.00	
3,519.5	0.00	0.00	3,511.0	-1,522.0	-195.0	-53.3	2.00	-2.00	0.00	180.00	
6,601.5	0.00	0.00	6,593.0	1,560.0	-195.0	-53.3	0.00	0.00	0.00	0.00	KOP - JOHNSONS
7,501.5	90.00	270.34	7,166.0	2,133.0	-191.6	-626.2	10.00	10.00	-9.96	270.34	7" ICP - JOHNSON
14,508.7	90.00	270.34	7,166.0	2,133.0	-150.0	-7,633.3	0.00	0.00	0.00	14.26	BHL - JOHNSONS

Planning Report



Database:	EDM 5000.1 Single User Db	Local Co-ordinate Reference:	Well JOHNSONS CORNER 13
Company:	EXTRACTION OIL & GAS	TVD Reference:	KB @ 5033.0usft (Original Well Elev)
Project:	WELD COUNTY, COLORADO (NAD 83)	MD Reference:	KB @ 5033.0usft (Original Well Elev)
Site:	SEC. 35 T5N R68W 6th P.M.	North Reference:	True
Well:	JOHNSONS CORNER 13	Survey Calculation Method:	Minimum Curvature
Wellbore:	ORIGINAL WELLBORE		
Design:	PROPOSAL #1		

Planned Survey										
MD (usft)	Inc (°)	Azi (°)	TVD (usft)	SS (usft)	+N/-S (usft)	+E/-W (usft)	Vertical Section (usft)	Dogleg Rate (°/100usft)	Build Rate (°/100usft)	Turn Rate (°/100usft)
0.0	0.00	0.00	0.0	5,033.00	0.0	0.0	0.0	0.00	0.00	0.00
100.0	0.00	0.00	100.0	4,933.00	0.0	0.0	0.0	0.00	0.00	0.00
200.0	0.00	0.00	200.0	4,833.00	0.0	0.0	0.0	0.00	0.00	0.00
300.0	0.00	0.00	300.0	4,733.00	0.0	0.0	0.0	0.00	0.00	0.00
400.0	0.00	0.00	400.0	4,633.00	0.0	0.0	0.0	0.00	0.00	0.00
500.0	0.00	0.00	500.0	4,533.00	0.0	0.0	0.0	0.00	0.00	0.00
600.0	0.00	0.00	600.0	4,433.00	0.0	0.0	0.0	0.00	0.00	0.00
700.0	0.00	0.00	700.0	4,333.00	0.0	0.0	0.0	0.00	0.00	0.00
800.0	0.00	0.00	800.0	4,233.00	0.0	0.0	0.0	0.00	0.00	0.00
900.0	0.00	0.00	900.0	4,133.00	0.0	0.0	0.0	0.00	0.00	0.00
START NUDGE (2°/100ft BUR)										
950.0	0.00	0.00	950.0	4,083.00	0.0	0.0	0.0	0.00	0.00	0.00
1,000.0	1.00	195.29	1,000.0	4,033.00	-0.4	-0.1	0.1	2.00	2.00	0.00
1,100.0	3.00	195.29	1,099.9	3,933.07	-3.8	-1.0	1.1	2.00	2.00	0.00
EOB TO 5° INC										
1,200.0	5.00	195.29	1,199.7	3,833.34	-10.5	-2.9	3.1	2.00	2.00	0.00
1,300.0	5.00	195.29	1,299.3	3,733.70	-18.9	-5.2	5.5	0.00	0.00	0.00
1,400.0	5.00	195.29	1,398.9	3,634.08	-27.3	-7.5	8.0	0.00	0.00	0.00
1,500.0	5.00	195.29	1,498.5	3,534.46	-35.7	-9.8	10.5	0.00	0.00	0.00
1,600.0	5.00	195.29	1,598.2	3,434.84	-44.1	-12.1	12.9	0.00	0.00	0.00
1,700.0	5.00	195.29	1,697.8	3,335.22	-52.5	-14.4	15.4	0.00	0.00	0.00
1,800.0	5.00	195.29	1,797.4	3,235.60	-61.0	-16.7	17.9	0.00	0.00	0.00
1,900.0	5.00	195.29	1,897.0	3,135.98	-69.4	-19.0	20.3	0.00	0.00	0.00
2,000.0	5.00	195.29	1,996.6	3,036.36	-77.8	-21.3	22.8	0.00	0.00	0.00
2,100.0	5.00	195.29	2,096.3	2,936.74	-86.2	-23.6	25.2	0.00	0.00	0.00
2,200.0	5.00	195.29	2,195.9	2,837.12	-94.6	-25.9	27.7	0.00	0.00	0.00
2,300.0	5.00	195.29	2,295.5	2,737.50	-103.0	-28.1	30.2	0.00	0.00	0.00
2,400.0	5.00	195.29	2,395.1	2,637.88	-111.4	-30.4	32.6	0.00	0.00	0.00
2,500.0	5.00	195.29	2,494.7	2,538.26	-119.8	-32.7	35.1	0.00	0.00	0.00
2,600.0	5.00	195.29	2,594.4	2,438.64	-128.2	-35.0	37.6	0.00	0.00	0.00
2,700.0	5.00	195.29	2,694.0	2,339.02	-136.6	-37.3	40.0	0.00	0.00	0.00
2,800.0	5.00	195.29	2,793.6	2,239.40	-145.0	-39.6	42.5	0.00	0.00	0.00
2,900.0	5.00	195.29	2,893.2	2,139.78	-153.4	-41.9	44.9	0.00	0.00	0.00
3,000.0	5.00	195.29	2,992.8	2,040.17	-161.8	-44.2	47.4	0.00	0.00	0.00
3,100.0	5.00	195.29	3,092.5	1,940.55	-170.2	-46.5	49.9	0.00	0.00	0.00
3,200.0	5.00	195.29	3,192.1	1,840.93	-178.6	-48.8	52.3	0.00	0.00	0.00
END OF TANGENT										
3,269.5	5.00	195.29	3,261.3	1,771.66	-184.5	-50.4	54.0	0.00	0.00	0.00
3,300.0	4.39	195.29	3,291.7	1,741.29	-186.9	-51.1	54.7	2.00	-2.00	0.00
PARKMAN										
3,368.4	3.02	195.29	3,360.0	1,673.00	-191.2	-52.3	56.0	2.00	-2.00	0.00
3,400.0	2.39	195.29	3,391.5	1,641.47	-192.6	-52.6	56.4	2.00	-2.00	0.00
3,500.0	0.39	195.29	3,491.5	1,541.51	-194.9	-53.3	57.1	2.00	-2.00	0.00
EOD TO VERTICAL										
3,519.5	0.00	0.00	3,511.0	1,522.00	-195.0	-53.3	57.1	2.00	-2.00	0.00
3,600.0	0.00	0.00	3,591.5	1,441.51	-195.0	-53.3	57.1	0.00	0.00	0.00
3,700.0	0.00	0.00	3,691.5	1,341.51	-195.0	-53.3	57.1	0.00	0.00	0.00
3,800.0	0.00	0.00	3,791.5	1,241.51	-195.0	-53.3	57.1	0.00	0.00	0.00
3,900.0	0.00	0.00	3,891.5	1,141.51	-195.0	-53.3	57.1	0.00	0.00	0.00
4,000.0	0.00	0.00	3,991.5	1,041.51	-195.0	-53.3	57.1	0.00	0.00	0.00
SUSSEX										
4,095.5	0.00	0.00	4,087.0	946.00	-195.0	-53.3	57.1	0.00	0.00	0.00
4,100.0	0.00	0.00	4,091.5	941.51	-195.0	-53.3	57.1	0.00	0.00	0.00

Database:	EDM 5000.1 Single User Db	Local Co-ordinate Reference:	Well JOHNSONS CORNER 13
Company:	EXTRACTION OIL & GAS	TVD Reference:	KB @ 5033.0usft (Original Well Elev)
Project:	WELD COUNTY, COLORADO (NAD 83)	MD Reference:	KB @ 5033.0usft (Original Well Elev)
Site:	SEC. 35 T5N R68W 6th P.M.	North Reference:	True
Well:	JOHNSONS CORNER 13	Survey Calculation Method:	Minimum Curvature
Wellbore:	ORIGINAL WELLBORE		
Design:	PROPOSAL #1		

Planned Survey

MD (usft)	Inc (°)	Azi (°)	TVD (usft)	SS (usft)	+N/-S (usft)	+E/-W (usft)	Vertical Section (usft)	Dogleg Rate (°/100usft)	Build Rate (°/100usft)	Turn Rate (°/100usft)
4,200.0	0.00	0.00	4,191.5	841.51	-195.0	-53.3	57.1	0.00	0.00	0.00
4,300.0	0.00	0.00	4,291.5	741.51	-195.0	-53.3	57.1	0.00	0.00	0.00
4,400.0	0.00	0.00	4,391.5	641.51	-195.0	-53.3	57.1	0.00	0.00	0.00
SHANNON										
4,485.5	0.00	0.00	4,477.0	556.00	-195.0	-53.3	57.1	0.00	0.00	0.00
4,500.0	0.00	0.00	4,491.5	541.51	-195.0	-53.3	57.1	0.00	0.00	0.00
4,600.0	0.00	0.00	4,591.5	441.51	-195.0	-53.3	57.1	0.00	0.00	0.00
4,700.0	0.00	0.00	4,691.5	341.51	-195.0	-53.3	57.1	0.00	0.00	0.00
4,800.0	0.00	0.00	4,791.5	241.51	-195.0	-53.3	57.1	0.00	0.00	0.00
4,900.0	0.00	0.00	4,891.5	141.51	-195.0	-53.3	57.1	0.00	0.00	0.00
5,000.0	0.00	0.00	4,991.5	41.51	-195.0	-53.3	57.1	0.00	0.00	0.00
5,100.0	0.00	0.00	5,091.5	-58.49	-195.0	-53.3	57.1	0.00	0.00	0.00
5,200.0	0.00	0.00	5,191.5	-158.49	-195.0	-53.3	57.1	0.00	0.00	0.00
5,300.0	0.00	0.00	5,291.5	-258.49	-195.0	-53.3	57.1	0.00	0.00	0.00
5,400.0	0.00	0.00	5,391.5	-358.49	-195.0	-53.3	57.1	0.00	0.00	0.00
5,500.0	0.00	0.00	5,491.5	-458.49	-195.0	-53.3	57.1	0.00	0.00	0.00
5,600.0	0.00	0.00	5,591.5	-558.49	-195.0	-53.3	57.1	0.00	0.00	0.00
5,700.0	0.00	0.00	5,691.5	-658.49	-195.0	-53.3	57.1	0.00	0.00	0.00
5,800.0	0.00	0.00	5,791.5	-758.49	-195.0	-53.3	57.1	0.00	0.00	0.00
5,900.0	0.00	0.00	5,891.5	-858.49	-195.0	-53.3	57.1	0.00	0.00	0.00
6,000.0	0.00	0.00	5,991.5	-958.49	-195.0	-53.3	57.1	0.00	0.00	0.00
6,100.0	0.00	0.00	6,091.5	-1,058.49	-195.0	-53.3	57.1	0.00	0.00	0.00
6,200.0	0.00	0.00	6,191.5	-1,158.49	-195.0	-53.3	57.1	0.00	0.00	0.00
6,300.0	0.00	0.00	6,291.5	-1,258.49	-195.0	-53.3	57.1	0.00	0.00	0.00
6,400.0	0.00	0.00	6,391.5	-1,358.49	-195.0	-53.3	57.1	0.00	0.00	0.00
6,500.0	0.00	0.00	6,491.5	-1,458.49	-195.0	-53.3	57.1	0.00	0.00	0.00
6,600.0	0.00	0.00	6,591.5	-1,558.49	-195.0	-53.3	57.1	0.00	0.00	0.00
KOP (10°/100ft BUR)										
6,601.5	0.00	0.00	6,593.0	-1,560.00	-195.0	-53.3	57.1	0.00	0.00	0.00
6,700.0	9.85	270.34	6,691.0	-1,658.01	-195.0	-61.7	65.6	10.00	10.00	0.00
6,800.0	19.85	270.34	6,787.5	-1,754.55	-194.8	-87.3	91.1	10.00	10.00	0.00
6,900.0	29.85	270.34	6,878.2	-1,845.17	-194.6	-129.3	133.1	10.00	10.00	0.00
NIOBRARA										
6,910.2	30.87	270.34	6,887.0	-1,854.00	-194.5	-134.5	138.3	10.00	10.00	0.00
7,000.0	39.85	270.34	6,960.1	-1,927.14	-194.2	-186.4	190.1	10.00	10.00	0.00
7,100.0	49.85	270.34	7,030.9	-1,997.95	-193.8	-256.8	260.6	10.00	10.00	0.00
7,200.0	59.84	270.34	7,088.5	-2,055.45	-193.3	-338.5	342.2	10.00	10.00	0.00
7,300.0	69.84	270.34	7,130.9	-2,097.91	-192.8	-428.9	432.6	10.00	10.00	0.00
FORT HAYS										
7,315.3	71.38	270.34	7,136.0	-2,103.00	-192.7	-443.3	447.0	10.00	10.00	0.00
CODELL										
7,394.4	79.28	270.34	7,156.0	-2,123.00	-192.2	-519.7	523.4	10.00	10.00	0.00
7,400.0	79.84	270.34	7,157.0	-2,124.02	-192.2	-525.2	528.9	10.00	10.00	0.00
7,500.0	89.84	270.34	7,166.0	-2,133.00	-191.6	-624.7	628.4	10.00	10.00	0.00
7" ICP - JOHNSONS CORNER 13										
7,501.5	90.00	270.34	7,166.0	-2,133.00	-191.6	-626.2	629.9	10.00	10.00	0.00
7,600.0	90.00	270.34	7,166.0	-2,133.01	-191.0	-724.7	728.3	0.00	0.00	0.00
7,700.0	90.00	270.34	7,166.0	-2,133.02	-190.4	-824.7	828.3	0.00	0.00	0.00
7,800.0	90.00	270.34	7,166.0	-2,133.02	-189.8	-924.7	928.3	0.00	0.00	0.00
7,900.0	90.00	270.34	7,166.0	-2,133.03	-189.3	-1,024.7	1,028.2	0.00	0.00	0.00
8,000.0	90.00	270.34	7,166.0	-2,133.04	-188.7	-1,124.7	1,128.2	0.00	0.00	0.00
8,100.0	90.00	270.34	7,166.0	-2,133.05	-188.1	-1,224.7	1,228.2	0.00	0.00	0.00
8,200.0	90.00	270.34	7,166.1	-2,133.05	-187.5	-1,324.7	1,328.1	0.00	0.00	0.00

Planning Report



Database:	EDM 5000.1 Single User Db	Local Co-ordinate Reference:	Well JOHNSONS CORNER 13
Company:	EXTRACTION OIL & GAS	TVD Reference:	KB @ 5033.0usft (Original Well Elev)
Project:	WELD COUNTY, COLORADO (NAD 83)	MD Reference:	KB @ 5033.0usft (Original Well Elev)
Site:	SEC. 35 T5N R68W 6th P.M.	North Reference:	True
Well:	JOHNSONS CORNER 13	Survey Calculation Method:	Minimum Curvature
Wellbore:	ORIGINAL WELLBORE		
Design:	PROPOSAL #1		

Planned Survey										
MD (usft)	Inc (°)	Azi (°)	TVD (usft)	SS (usft)	+N/-S (usft)	+E/-W (usft)	Vertical Section (usft)	Dogleg Rate (°/100usft)	Build Rate (°/100usft)	Turn Rate (°/100usft)
8,300.0	90.00	270.34	7,166.1	-2,133.06	-186.9	-1,424.7	1,428.1	0.00	0.00	0.00
8,400.0	90.00	270.34	7,166.1	-2,133.07	-186.3	-1,524.7	1,528.1	0.00	0.00	0.00
8,500.0	90.00	270.34	7,166.1	-2,133.07	-185.7	-1,624.7	1,628.0	0.00	0.00	0.00
8,600.0	90.00	270.34	7,166.1	-2,133.08	-185.1	-1,724.7	1,728.0	0.00	0.00	0.00
8,700.0	90.00	270.34	7,166.1	-2,133.08	-184.5	-1,824.7	1,828.0	0.00	0.00	0.00
8,800.0	90.00	270.34	7,166.1	-2,133.09	-183.9	-1,924.7	1,927.9	0.00	0.00	0.00
8,900.0	90.00	270.34	7,166.1	-2,133.10	-183.3	-2,024.7	2,027.9	0.00	0.00	0.00
9,000.0	90.00	270.34	7,166.1	-2,133.10	-182.7	-2,124.7	2,127.9	0.00	0.00	0.00
9,100.0	90.00	270.34	7,166.1	-2,133.11	-182.1	-2,224.7	2,227.8	0.00	0.00	0.00
9,200.0	90.00	270.34	7,166.1	-2,133.11	-181.6	-2,324.7	2,327.8	0.00	0.00	0.00
9,300.0	90.00	270.34	7,166.1	-2,133.11	-181.0	-2,424.7	2,427.8	0.00	0.00	0.00
9,400.0	90.00	270.34	7,166.1	-2,133.12	-180.4	-2,524.7	2,527.7	0.00	0.00	0.00
9,500.0	90.00	270.34	7,166.1	-2,133.12	-179.8	-2,624.7	2,627.7	0.00	0.00	0.00
9,600.0	90.00	270.34	7,166.1	-2,133.13	-179.2	-2,724.7	2,727.7	0.00	0.00	0.00
9,700.0	90.00	270.34	7,166.1	-2,133.13	-178.6	-2,824.7	2,827.6	0.00	0.00	0.00
9,800.0	90.00	270.34	7,166.1	-2,133.13	-178.0	-2,924.7	2,927.6	0.00	0.00	0.00
9,900.0	90.00	270.34	7,166.1	-2,133.13	-177.4	-3,024.7	3,027.6	0.00	0.00	0.00
10,000.0	90.00	270.34	7,166.1	-2,133.14	-176.8	-3,124.7	3,127.5	0.00	0.00	0.00
10,100.0	90.00	270.34	7,166.1	-2,133.14	-176.2	-3,224.7	3,227.5	0.00	0.00	0.00
10,200.0	90.00	270.34	7,166.1	-2,133.14	-175.6	-3,324.7	3,327.5	0.00	0.00	0.00
10,300.0	90.00	270.34	7,166.1	-2,133.14	-175.0	-3,424.7	3,427.4	0.00	0.00	0.00
10,400.0	90.00	270.34	7,166.1	-2,133.14	-174.4	-3,524.7	3,527.4	0.00	0.00	0.00
10,500.0	90.00	270.34	7,166.1	-2,133.15	-173.8	-3,624.7	3,627.4	0.00	0.00	0.00
10,600.0	90.00	270.34	7,166.1	-2,133.15	-173.2	-3,724.7	3,727.3	0.00	0.00	0.00
10,700.0	90.00	270.34	7,166.1	-2,133.15	-172.7	-3,824.7	3,827.3	0.00	0.00	0.00
10,800.0	90.00	270.34	7,166.1	-2,133.15	-172.1	-3,924.7	3,927.3	0.00	0.00	0.00
10,900.0	90.00	270.34	7,166.1	-2,133.15	-171.5	-4,024.7	4,027.2	0.00	0.00	0.00
11,000.0	90.00	270.34	7,166.1	-2,133.15	-170.9	-4,124.7	4,127.2	0.00	0.00	0.00
11,100.0	90.00	270.34	7,166.1	-2,133.15	-170.3	-4,224.7	4,227.2	0.00	0.00	0.00
11,200.0	90.00	270.34	7,166.1	-2,133.15	-169.7	-4,324.7	4,327.1	0.00	0.00	0.00
11,300.0	90.00	270.34	7,166.1	-2,133.15	-169.1	-4,424.6	4,427.1	0.00	0.00	0.00
11,400.0	90.00	270.34	7,166.1	-2,133.15	-168.5	-4,524.6	4,527.1	0.00	0.00	0.00
11,500.0	90.00	270.34	7,166.1	-2,133.15	-167.9	-4,624.6	4,627.1	0.00	0.00	0.00
11,600.0	90.00	270.34	7,166.1	-2,133.15	-167.3	-4,724.6	4,727.0	0.00	0.00	0.00
11,700.0	90.00	270.34	7,166.1	-2,133.14	-166.7	-4,824.6	4,827.0	0.00	0.00	0.00
11,800.0	90.00	270.34	7,166.1	-2,133.14	-166.1	-4,924.6	4,927.0	0.00	0.00	0.00
11,900.0	90.00	270.34	7,166.1	-2,133.14	-165.5	-5,024.6	5,026.9	0.00	0.00	0.00
12,000.0	90.00	270.34	7,166.1	-2,133.14	-164.9	-5,124.6	5,126.9	0.00	0.00	0.00
12,100.0	90.00	270.34	7,166.1	-2,133.13	-164.3	-5,224.6	5,226.9	0.00	0.00	0.00
12,200.0	90.00	270.34	7,166.1	-2,133.13	-163.7	-5,324.6	5,326.8	0.00	0.00	0.00
12,300.0	90.00	270.34	7,166.1	-2,133.13	-163.1	-5,424.6	5,426.8	0.00	0.00	0.00
12,400.0	90.00	270.34	7,166.1	-2,133.13	-162.6	-5,524.6	5,526.8	0.00	0.00	0.00
12,500.0	90.00	270.34	7,166.1	-2,133.12	-162.0	-5,624.6	5,626.7	0.00	0.00	0.00
12,600.0	90.00	270.34	7,166.1	-2,133.12	-161.4	-5,724.6	5,726.7	0.00	0.00	0.00
12,700.0	90.00	270.34	7,166.1	-2,133.11	-160.8	-5,824.6	5,826.7	0.00	0.00	0.00
12,800.0	90.00	270.34	7,166.1	-2,133.11	-160.2	-5,924.6	5,926.6	0.00	0.00	0.00
12,900.0	90.00	270.34	7,166.1	-2,133.11	-159.6	-6,024.6	6,026.6	0.00	0.00	0.00
13,000.0	90.00	270.34	7,166.1	-2,133.10	-159.0	-6,124.6	6,126.6	0.00	0.00	0.00
13,100.0	90.00	270.34	7,166.1	-2,133.10	-158.4	-6,224.6	6,226.5	0.00	0.00	0.00
13,200.0	90.00	270.34	7,166.1	-2,133.09	-157.8	-6,324.6	6,326.5	0.00	0.00	0.00
13,300.0	90.00	270.34	7,166.1	-2,133.09	-157.2	-6,424.6	6,426.5	0.00	0.00	0.00
13,400.0	90.00	270.34	7,166.1	-2,133.08	-156.6	-6,524.6	6,526.4	0.00	0.00	0.00
13,500.0	90.00	270.34	7,166.1	-2,133.07	-156.0	-6,624.6	6,626.4	0.00	0.00	0.00
13,600.0	90.00	270.34	7,166.1	-2,133.07	-155.4	-6,724.6	6,726.4	0.00	0.00	0.00

Planning Report



Database:	EDM 5000.1 Single User Db	Local Co-ordinate Reference:	Well JOHNSONS CORNER 13
Company:	EXTRACTION OIL & GAS	TVD Reference:	KB @ 5033.0usft (Original Well Elev)
Project:	WELD COUNTY, COLORADO (NAD 83)	MD Reference:	KB @ 5033.0usft (Original Well Elev)
Site:	SEC. 35 T5N R68W 6th P.M.	North Reference:	True
Well:	JOHNSONS CORNER 13	Survey Calculation Method:	Minimum Curvature
Wellbore:	ORIGINAL WELLBORE		
Design:	PROPOSAL #1		

Planned Survey										
MD (usft)	Inc (°)	Azi (°)	TVD (usft)	SS (usft)	+N/-S (usft)	+E/-W (usft)	Vertical Section (usft)	Dogleg Rate (°/100usft)	Build Rate (°/100usft)	Turn Rate (°/100usft)
13,700.0	90.00	270.34	7,166.1	-2,133.06	-154.8	-6,824.6	6,826.3	0.00	0.00	0.00
13,800.0	90.00	270.34	7,166.1	-2,133.05	-154.2	-6,924.6	6,926.3	0.00	0.00	0.00
13,900.0	90.00	270.34	7,166.0	-2,133.05	-153.6	-7,024.6	7,026.3	0.00	0.00	0.00
14,000.0	90.00	270.34	7,166.0	-2,133.04	-153.0	-7,124.6	7,126.2	0.00	0.00	0.00
14,100.0	90.00	270.34	7,166.0	-2,133.03	-152.4	-7,224.6	7,226.2	0.00	0.00	0.00
14,200.0	90.00	270.34	7,166.0	-2,133.03	-151.8	-7,324.6	7,326.2	0.00	0.00	0.00
14,300.0	90.00	270.34	7,166.0	-2,133.02	-151.2	-7,424.6	7,426.1	0.00	0.00	0.00
14,400.0	90.00	270.34	7,166.0	-2,133.01	-150.6	-7,524.6	7,526.1	0.00	0.00	0.00
14,500.0	90.00	270.34	7,166.0	-2,133.00	-150.1	-7,624.6	7,626.1	0.00	0.00	0.00
BHL - JOHNSONS CORNER 13										
14,508.7	90.00	270.34	7,166.0	-2,133.00	-150.0	-7,633.3	7,634.8	0.00	0.00	0.00

Formations						
MD (usft)	TVD (usft)	Name	Lithology	Dip (°)	Dip Direction (°)	
3,368.4	3,360.0	PARKMAN		0.00		
4,095.5	4,087.0	SUSSEX		0.00		
4,485.5	4,477.0	SHANNON		0.00		
6,910.2	6,887.0	NIOBRARA		0.00		
7,315.3	7,136.0	FORT HAYS		0.00		
7,394.4	7,156.0	CODELL		0.00		

Plan Annotations				
MD (usft)	TVD (usft)	Local Coordinates		Comment
		+N/-S (usft)	+E/-W (usft)	
950.0	950.0	0.0	0.0	START NUDGE (2°/100ft BUR)
1,200.0	1,199.7	-10.5	-2.9	EOB TO 5° INC
3,269.5	3,261.3	-184.5	-50.4	END OF TANGENT
3,519.5	3,511.0	-195.0	-53.3	EOD TO VERTICAL
6,601.5	6,593.0	-195.0	-53.3	KOP (10°/100ft BUR)
7,501.5	7,166.0	-191.6	-626.2	7" ICP - JOHNSONS CORNER 13
14,508.7	7,166.0	-150.0	-7,633.3	BHL - JOHNSONS CORNER 13