

EXTRACTION OIL & GAS

WELD COUNTY, COLORADO (NAD 83)

SEC. 35 T5N R68W 6th P.M.

JOHNSONS CORNER 9

ORIGINAL WELLBORE

14 August, 2014

Plan: PROPOSAL #1

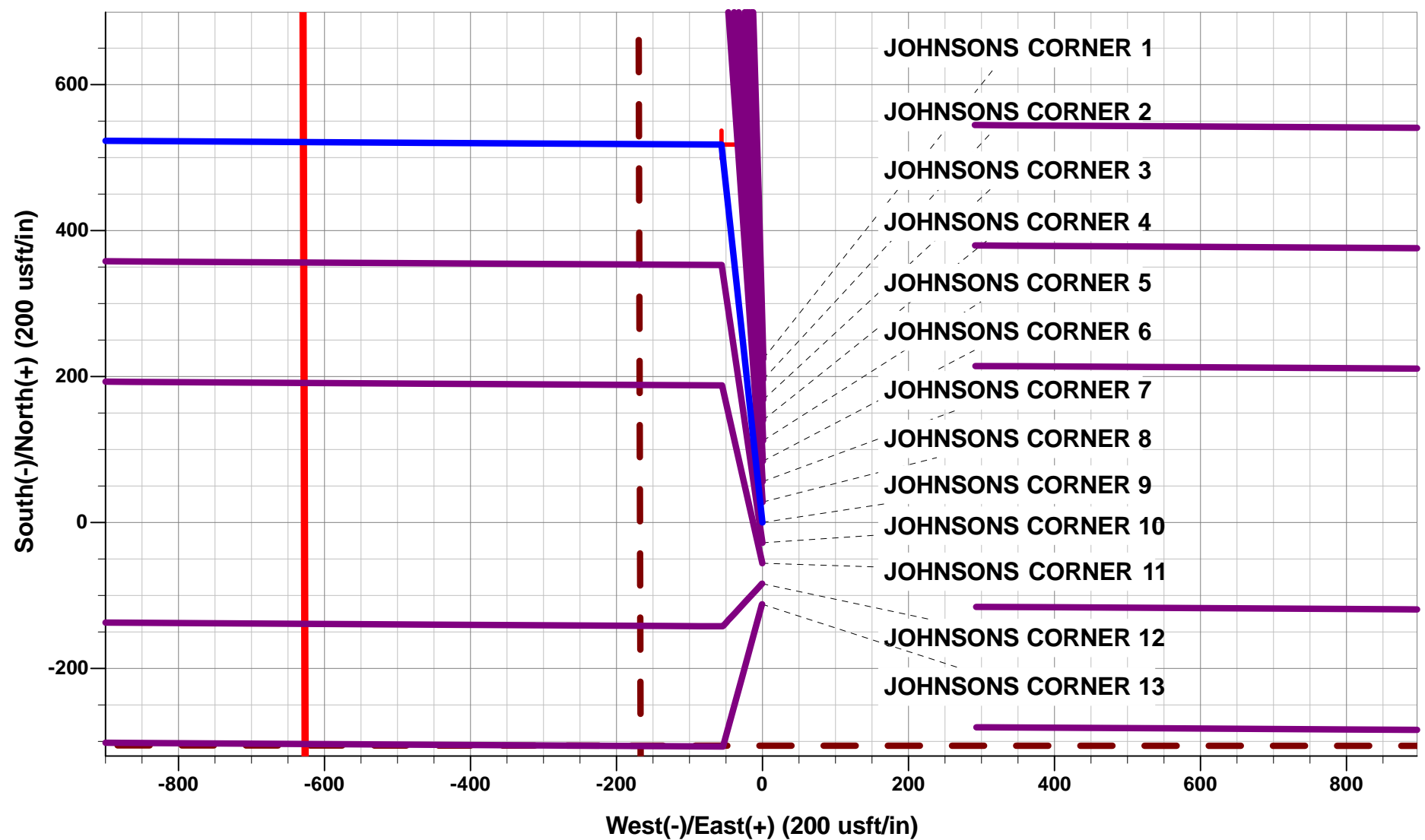




Project: WELD COUNTY, COLORADO (NAD 83)
Site: SEC. 35 T5N R68W 6th P.M.
Well: JOHNSONS CORNER 9
Wellbore: ORIGINAL WELLBORE
Design: PROPOSAL #1

ANNOTATIONS									
	TVD	MD	Inc	Azi	+N/-S	+E/-W	VSect	Dep	Annotation
	1750.0	1750.0	0.00	0.00	0.0	0.0	0.0	0.0	START NUDGE (2°/100ft BUR)
	2092.0	2092.8	6.86	353.82	20.4	-2.2	3.7	20.5	EOB TO 6.86° INC
	6084.1	6113.7	6.86	353.82	497.5	-53.9	90.3	500.4	END OF TANGENT
	6426.1	6456.5	0.00	0.00	517.9	-56.1	94.0	520.9	EOD TO VERTICAL
	6456.1	6486.5	0.00	0.00	517.9	-56.1	94.0	520.9	KOP (10°/100ft BUR)
	7029.0	7386.4	90.00	270.34	521.3	-629.0	665.6	1093.8	7" ICP - JOHNSON CORNER 9
	7029.0	14392.6	90.00	270.34	563.0	-7635.0	7655.8	8100.0	BHL - JOHNSONS CORNER 9

WELLBORE TARGET DETAILS (LAT/LONG)					
Name	TVD	+N/-S	+E/-W	Latitude	Longitude
KOP - JOHNSONS CORNER 9	6456.1	517.9	-56.1	40.358667	-104.973617
7" ICP - JOHNSONS CORNER 9	7029.0	521.3	-629.0	40.358676	-104.975673
BHL - JOHNSONS CORNER 9	7029.0	563.0	-7635.0	40.358787	-105.000812



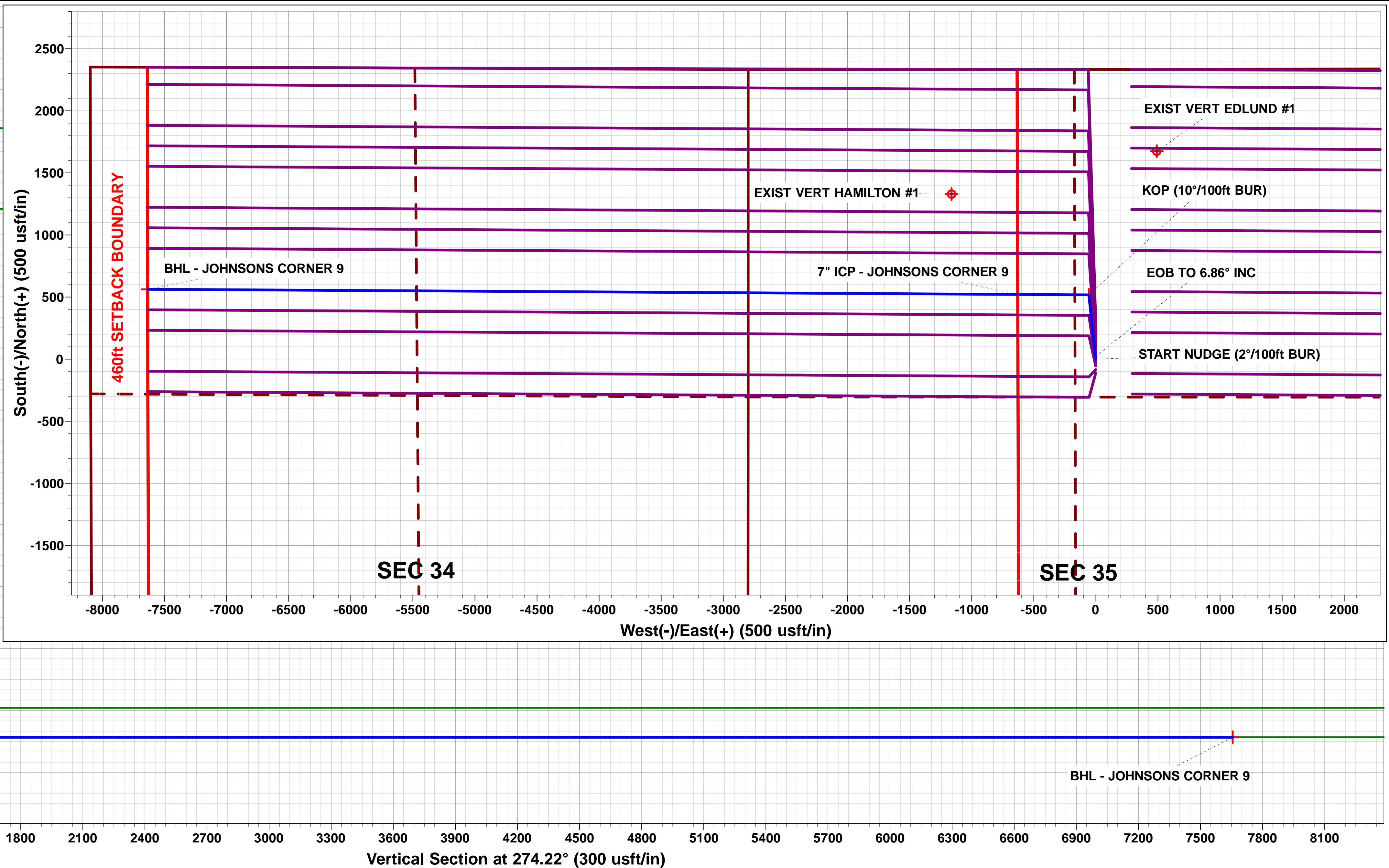
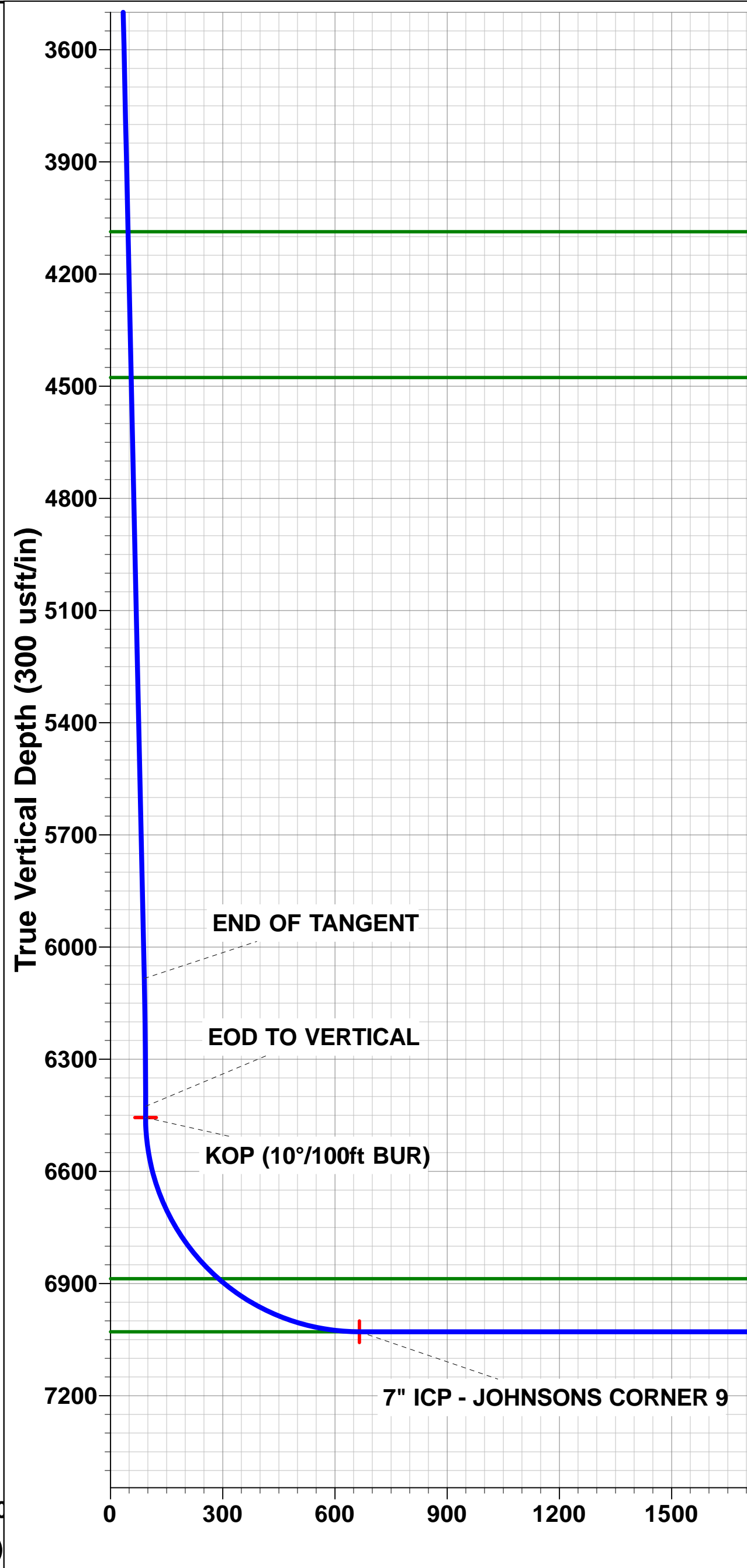
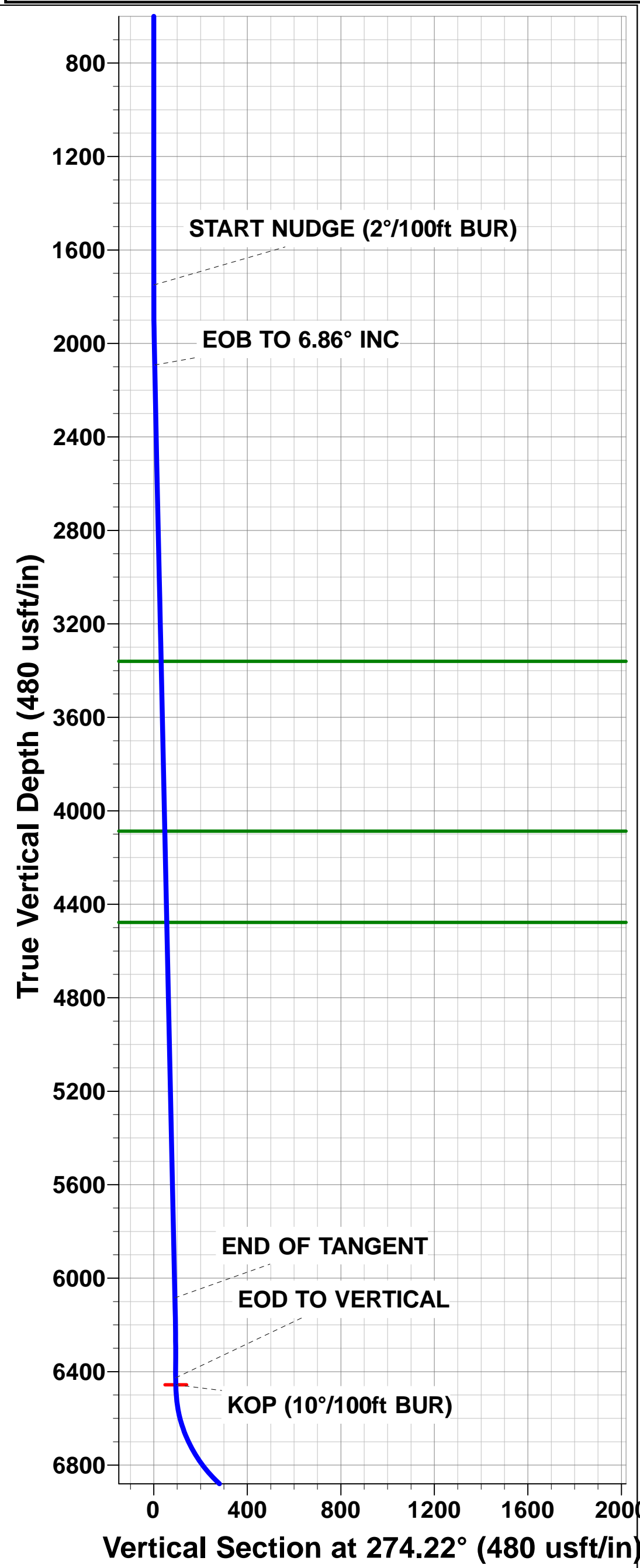
FORMATION TOP DETAILS		
TVDPath	MDPath	Formation
3360.0	3369.9	PARKMAN
4087.0	4102.2	SUSSEX
4477.0	4495.0	SHANNON
6887.0	6974.2	NIOBRARA
7029.0	7386.4	NIO B TGT

T

M

Azimuths to True North
Magnetic North: 8.55°

Magnetic Field
Strength: 52752.0snT
Dip Angle: 66.87°
Date: 14/08/2014
Model: IGRF2010



Planning Report



Database:	EDM 5000.1 Single User Db	Local Co-ordinate Reference:	Well JOHNSONS CORNER 9
Company:	EXTRACTION OIL & GAS	TVD Reference:	KB @ 5033.0usft (Original Well Elev)
Project:	WELD COUNTY, COLORADO (NAD 83)	MD Reference:	KB @ 5033.0usft (Original Well Elev)
Site:	SEC. 35 T5N R68W 6th P.M.	North Reference:	True
Well:	JOHNSONS CORNER 9	Survey Calculation Method:	Minimum Curvature
Wellbore:	ORIGINAL WELLBORE		
Design:	PROPOSAL #1		

Project	WELD COUNTY, COLORADO (NAD 83)		
Map System:	US State Plane 1983	System Datum:	Mean Sea Level
Geo Datum:	North American Datum 1983		
Map Zone:	Colorado Northern Zone		Using geodetic scale factor

Site	SEC. 35 T5N R68W 6th P.M.		
Site Position:		Northing:	1,373,645.09 usft
From:	Lat/Long	Easting:	3,146,750.79 usft
Position Uncertainty:	0.0 usft	Slot Radius:	1.10000ft
		Latitude:	40.357861
		Longitude:	-104.973411
		Grid Convergence:	0.34 °

Well	JOHNSONS CORNER 9		
Well Position	+N/-S	-224.4 usft	Northing:
	+E/-W	-1.4 usft	Easting:
Position Uncertainty		0.0 usft	Wellhead Elevation:
			Latitude:
			Longitude:
			Ground Level:

Wellbore	ORIGINAL WELLBORE				
Magnetics	Model Name	Sample Date	Declination (°)	Dip Angle (°)	Field Strength (nT)
	IGRF2010	14/08/2014	8.55	66.87	52,752

Design	PROPOSAL #1			
Audit Notes:				
Version:	Phase:	PROTOTYPE	Tie On Depth:	0.0
Vertical Section:	Depth From (TVD) (usft)	+N/-S (usft)	+E/-W (usft)	Direction (°)
	7,029.0	0.0	0.0	274.22

Plan Sections											
MD (usft)	Inc (°)	Azi (°)	Vertical Depth	SS (usft)	+N/-S (usft)	+E/-W (usft)	Dogleg Rate (°/100usf)	Build Rate (°/100usf)	Turn Rate (°/100usf)	TFO (°)	Target
0.0	0.00	0.00	0.0	-5,033.0	0.0	0.0	0.00	0.00	0.00	0.00	
1,750.0	0.00	0.00	1,750.0	-3,283.0	0.0	0.0	0.00	0.00	0.00	0.00	
2,092.8	6.86	353.82	2,092.0	-2,941.0	20.4	-2.2	2.00	2.00	0.00	353.82	
6,113.7	6.86	353.82	6,084.1	1,051.1	497.5	-53.9	0.00	0.00	0.00	0.00	
6,456.5	0.00	0.00	6,426.1	1,393.1	517.9	-56.1	2.00	-2.00	0.00	180.00	
6,486.5	0.00	0.00	6,456.1	1,423.1	517.9	-56.1	0.00	0.00	0.00	0.00	KOP - JOHNSONS
7,386.4	90.00	270.34	7,029.0	1,996.0	521.3	-629.0	10.00	10.00	-9.96	270.34	7" ICP - JOHNSON
14,392.6	90.00	270.34	7,029.0	1,996.0	563.0	-7,635.0	0.00	0.00	0.00	-113.87	BHL - JOHNSONS

Planning Report



Database:	EDM 5000.1 Single User Db	Local Co-ordinate Reference:	Well JOHNSONS CORNER 9
Company:	EXTRACTION OIL & GAS	TVD Reference:	KB @ 5033.0usft (Original Well Elev)
Project:	WELD COUNTY, COLORADO (NAD 83)	MD Reference:	KB @ 5033.0usft (Original Well Elev)
Site:	SEC. 35 T5N R68W 6th P.M.	North Reference:	True
Well:	JOHNSONS CORNER 9	Survey Calculation Method:	Minimum Curvature
Wellbore:	ORIGINAL WELLBORE		
Design:	PROPOSAL #1		

Planned Survey

MD (usft)	Inc (°)	Azi (°)	TVD (usft)	SS (usft)	+N/-S (usft)	+E/-W (usft)	Vertical Section (usft)	Dogleg Rate (°/100usft)	Build Rate (°/100usft)	Turn Rate (°/100usft)
0.0	0.00	0.00	0.0	5,033.00	0.0	0.0	0.0	0.00	0.00	0.00
100.0	0.00	0.00	100.0	4,933.00	0.0	0.0	0.0	0.00	0.00	0.00
200.0	0.00	0.00	200.0	4,833.00	0.0	0.0	0.0	0.00	0.00	0.00
300.0	0.00	0.00	300.0	4,733.00	0.0	0.0	0.0	0.00	0.00	0.00
400.0	0.00	0.00	400.0	4,633.00	0.0	0.0	0.0	0.00	0.00	0.00
500.0	0.00	0.00	500.0	4,533.00	0.0	0.0	0.0	0.00	0.00	0.00
600.0	0.00	0.00	600.0	4,433.00	0.0	0.0	0.0	0.00	0.00	0.00
700.0	0.00	0.00	700.0	4,333.00	0.0	0.0	0.0	0.00	0.00	0.00
800.0	0.00	0.00	800.0	4,233.00	0.0	0.0	0.0	0.00	0.00	0.00
900.0	0.00	0.00	900.0	4,133.00	0.0	0.0	0.0	0.00	0.00	0.00
1,000.0	0.00	0.00	1,000.0	4,033.00	0.0	0.0	0.0	0.00	0.00	0.00
1,100.0	0.00	0.00	1,100.0	3,933.00	0.0	0.0	0.0	0.00	0.00	0.00
1,200.0	0.00	0.00	1,200.0	3,833.00	0.0	0.0	0.0	0.00	0.00	0.00
1,300.0	0.00	0.00	1,300.0	3,733.00	0.0	0.0	0.0	0.00	0.00	0.00
1,400.0	0.00	0.00	1,400.0	3,633.00	0.0	0.0	0.0	0.00	0.00	0.00
1,500.0	0.00	0.00	1,500.0	3,533.00	0.0	0.0	0.0	0.00	0.00	0.00
1,600.0	0.00	0.00	1,600.0	3,433.00	0.0	0.0	0.0	0.00	0.00	0.00
1,700.0	0.00	0.00	1,700.0	3,333.00	0.0	0.0	0.0	0.00	0.00	0.00
START NUDGE (2°/100ft BUR)										
1,750.0	0.00	0.00	1,750.0	3,283.00	0.0	0.0	0.0	0.00	0.00	0.00
1,800.0	1.00	353.82	1,800.0	3,233.00	0.4	0.0	0.1	2.00	2.00	0.00
1,900.0	3.00	353.82	1,899.9	3,133.07	3.9	-0.4	0.7	2.00	2.00	0.00
2,000.0	5.00	353.82	1,999.7	3,033.32	10.8	-1.2	2.0	2.00	2.00	0.00
EOB TO 6.86° INC										
2,092.8	6.86	353.82	2,092.0	2,941.04	20.4	-2.2	3.7	2.00	2.00	0.00
2,100.0	6.86	353.82	2,099.1	2,933.87	21.2	-2.3	3.9	0.00	0.00	0.00
2,200.0	6.86	353.82	2,198.4	2,834.58	33.1	-3.6	6.0	0.00	0.00	0.00
2,300.0	6.86	353.82	2,297.7	2,735.30	45.0	-4.9	8.2	0.00	0.00	0.00
2,400.0	6.86	353.82	2,397.0	2,636.01	56.8	-6.2	10.3	0.00	0.00	0.00
2,500.0	6.86	353.82	2,496.3	2,536.73	68.7	-7.4	12.5	0.00	0.00	0.00
2,600.0	6.86	353.82	2,595.6	2,437.44	80.6	-8.7	14.6	0.00	0.00	0.00
2,700.0	6.86	353.82	2,694.8	2,338.16	92.4	-10.0	16.8	0.00	0.00	0.00
2,800.0	6.86	353.82	2,794.1	2,238.87	104.3	-11.3	18.9	0.00	0.00	0.00
2,900.0	6.86	353.82	2,893.4	2,139.59	116.2	-12.6	21.1	0.00	0.00	0.00
3,000.0	6.86	353.82	2,992.7	2,040.30	128.0	-13.9	23.2	0.00	0.00	0.00
3,100.0	6.86	353.82	3,092.0	1,941.02	139.9	-15.2	25.4	0.00	0.00	0.00
3,200.0	6.86	353.82	3,191.3	1,841.73	151.8	-16.4	27.6	0.00	0.00	0.00
3,300.0	6.86	353.82	3,290.6	1,742.45	163.6	-17.7	29.7	0.00	0.00	0.00
PARKMAN										
3,369.9	6.86	353.82	3,360.0	1,673.00	171.9	-18.6	31.2	0.00	0.00	0.00
3,400.0	6.86	353.82	3,389.8	1,643.16	175.5	-19.0	31.9	0.00	0.00	0.00
3,500.0	6.86	353.82	3,489.1	1,543.88	187.4	-20.3	34.0	0.00	0.00	0.00
3,600.0	6.86	353.82	3,588.4	1,444.59	199.2	-21.6	36.2	0.00	0.00	0.00
3,700.0	6.86	353.82	3,687.7	1,345.31	211.1	-22.9	38.3	0.00	0.00	0.00
3,800.0	6.86	353.82	3,787.0	1,246.02	223.0	-24.2	40.5	0.00	0.00	0.00
3,900.0	6.86	353.82	3,886.3	1,146.74	234.8	-25.4	42.6	0.00	0.00	0.00
4,000.0	6.86	353.82	3,985.5	1,047.45	246.7	-26.7	44.8	0.00	0.00	0.00
4,100.0	6.86	353.82	4,084.8	948.17	258.6	-28.0	46.9	0.00	0.00	0.00
SUSSEX										
4,102.2	6.86	353.82	4,087.0	946.00	258.8	-28.0	47.0	0.00	0.00	0.00
4,200.0	6.86	353.82	4,184.1	848.88	270.4	-29.3	49.1	0.00	0.00	0.00
4,300.0	6.86	353.82	4,283.4	749.60	282.3	-30.6	51.3	0.00	0.00	0.00
4,400.0	6.86	353.82	4,382.7	650.31	294.2	-31.9	53.4	0.00	0.00	0.00
SHANNON										

Planning Report



Database:	EDM 5000.1 Single User Db	Local Co-ordinate Reference:	Well JOHNSONS CORNER 9
Company:	EXTRACTION OIL & GAS	TVD Reference:	KB @ 5033.0usft (Original Well Elev)
Project:	WELD COUNTY, COLORADO (NAD 83)	MD Reference:	KB @ 5033.0usft (Original Well Elev)
Site:	SEC. 35 T5N R68W 6th P.M.	North Reference:	True
Well:	JOHNSONS CORNER 9	Survey Calculation Method:	Minimum Curvature
Wellbore:	ORIGINAL WELLBORE		
Design:	PROPOSAL #1		

Planned Survey

MD (usft)	Inc (°)	Azi (°)	TVD (usft)	SS (usft)	+N/-S (usft)	+E/-W (usft)	Vertical Section (usft)	Dogleg Rate (°/100usft)	Build Rate (°/100usft)	Turn Rate (°/100usft)
4,495.0	6.86	353.82	4,477.0	556.00	305.4	-33.1	55.5	0.00	0.00	0.00
4,500.0	6.86	353.82	4,482.0	551.03	306.0	-33.2	55.6	0.00	0.00	0.00
4,600.0	6.86	353.82	4,581.3	451.74	317.9	-34.4	57.7	0.00	0.00	0.00
4,700.0	6.86	353.82	4,680.5	352.46	329.8	-35.7	59.9	0.00	0.00	0.00
4,800.0	6.86	353.82	4,779.8	253.17	341.6	-37.0	62.0	0.00	0.00	0.00
4,900.0	6.86	353.82	4,879.1	153.89	353.5	-38.3	64.2	0.00	0.00	0.00
5,000.0	6.86	353.82	4,978.4	54.60	365.4	-39.6	66.3	0.00	0.00	0.00
5,100.0	6.86	353.82	5,077.7	-44.68	377.2	-40.9	68.5	0.00	0.00	0.00
5,200.0	6.86	353.82	5,177.0	-143.97	389.1	-42.1	70.6	0.00	0.00	0.00
5,300.0	6.86	353.82	5,276.3	-243.25	401.0	-43.4	72.8	0.00	0.00	0.00
5,400.0	6.86	353.82	5,375.5	-342.54	412.8	-44.7	75.0	0.00	0.00	0.00
5,500.0	6.86	353.82	5,474.8	-441.82	424.7	-46.0	77.1	0.00	0.00	0.00
5,600.0	6.86	353.82	5,574.1	-541.11	436.6	-47.3	79.3	0.00	0.00	0.00
5,700.0	6.86	353.82	5,673.4	-640.39	448.4	-48.6	81.4	0.00	0.00	0.00
5,800.0	6.86	353.82	5,772.7	-739.68	460.3	-49.9	83.6	0.00	0.00	0.00
5,900.0	6.86	353.82	5,872.0	-838.96	472.2	-51.1	85.7	0.00	0.00	0.00
6,000.0	6.86	353.82	5,971.2	-938.25	484.0	-52.4	87.9	0.00	0.00	0.00
6,100.0	6.86	353.82	6,070.5	-1,037.53	495.9	-53.7	90.0	0.00	0.00	0.00
END OF TANGENT										
6,113.7	6.86	353.82	6,084.1	-1,051.14	497.5	-53.9	90.3	0.00	0.00	0.00
6,200.0	5.13	353.82	6,170.0	-1,136.96	506.5	-54.9	92.0	2.00	-2.00	0.00
6,300.0	3.13	353.82	6,269.7	-1,236.69	513.7	-55.6	93.3	2.00	-2.00	0.00
6,400.0	1.13	353.82	6,369.6	-1,336.62	517.3	-56.0	93.9	2.00	-2.00	0.00
EOD TO VERTICAL										
6,456.5	0.00	0.00	6,426.1	-1,393.10	517.9	-56.1	94.0	2.00	-2.00	0.00
KOP (10°/100ft BUR)										
6,486.5	0.00	0.00	6,456.1	-1,423.10	517.9	-56.1	94.0	0.00	0.00	0.00
6,500.0	1.35	270.34	6,469.6	-1,436.62	517.9	-56.3	94.2	10.00	10.00	0.00
6,600.0	11.35	270.34	6,568.9	-1,535.88	518.0	-67.3	105.2	10.00	10.00	0.00
6,700.0	21.35	270.34	6,664.7	-1,631.71	518.1	-95.4	133.3	10.00	10.00	0.00
6,800.0	31.35	270.34	6,754.2	-1,721.20	518.4	-139.8	177.5	10.00	10.00	0.00
6,900.0	41.36	270.34	6,834.6	-1,801.63	518.8	-199.0	236.6	10.00	10.00	0.00
NIOBRARA										
6,974.2	48.78	270.34	6,887.0	-1,854.00	519.1	-251.5	288.9	10.00	10.00	0.00
7,000.0	51.36	270.34	6,903.6	-1,870.56	519.2	-271.2	308.7	10.00	10.00	0.00
7,100.0	61.36	270.34	6,958.9	-1,925.89	519.7	-354.4	391.6	10.00	10.00	0.00
7,200.0	71.36	270.34	6,998.9	-1,965.95	520.2	-445.9	482.9	10.00	10.00	0.00
7,300.0	81.36	270.34	7,022.5	-1,989.50	520.8	-542.9	579.8	10.00	10.00	0.00
7" ICP - JOHNSON CORNER 9 - NIO B TGT										
7,386.4	90.00	270.34	7,029.0	-1,996.00	521.3	-629.0	665.6	10.00	10.00	0.00
7,400.0	90.00	270.34	7,029.0	-1,996.00	521.4	-642.6	679.2	0.00	0.00	0.00
7,500.0	90.00	270.34	7,029.0	-1,996.00	522.0	-742.6	779.0	0.00	0.00	0.00
7,600.0	90.00	270.34	7,029.0	-1,995.99	522.6	-842.6	878.7	0.00	0.00	0.00
7,700.0	90.00	270.34	7,029.0	-1,995.99	523.2	-942.6	978.5	0.00	0.00	0.00
7,800.0	90.00	270.34	7,029.0	-1,995.99	523.8	-1,042.6	1,078.3	0.00	0.00	0.00
7,900.0	90.00	270.34	7,029.0	-1,995.99	524.4	-1,142.6	1,178.1	0.00	0.00	0.00
8,000.0	90.00	270.34	7,029.0	-1,995.98	525.0	-1,242.6	1,277.8	0.00	0.00	0.00
8,100.0	90.00	270.34	7,029.0	-1,995.98	525.6	-1,342.6	1,377.6	0.00	0.00	0.00
8,200.0	90.00	270.34	7,029.0	-1,995.98	526.2	-1,442.6	1,477.4	0.00	0.00	0.00
8,300.0	90.00	270.34	7,029.0	-1,995.98	526.8	-1,542.6	1,577.1	0.00	0.00	0.00
8,400.0	90.00	270.34	7,029.0	-1,995.97	527.4	-1,642.6	1,676.9	0.00	0.00	0.00
8,500.0	90.00	270.34	7,029.0	-1,995.97	528.0	-1,742.6	1,776.7	0.00	0.00	0.00
8,600.0	90.00	270.34	7,029.0	-1,995.97	528.6	-1,842.6	1,876.5	0.00	0.00	0.00

Planning Report



Database:	EDM 5000.1 Single User Db	Local Co-ordinate Reference:	Well JOHNSONS CORNER 9
Company:	EXTRACTION OIL & GAS	TVD Reference:	KB @ 5033.0usft (Original Well Elev)
Project:	WELD COUNTY, COLORADO (NAD 83)	MD Reference:	KB @ 5033.0usft (Original Well Elev)
Site:	SEC. 35 T5N R68W 6th P.M.	North Reference:	True
Well:	JOHNSONS CORNER 9	Survey Calculation Method:	Minimum Curvature
Wellbore:	ORIGINAL WELLBORE		
Design:	PROPOSAL #1		

Planned Survey										
MD (usft)	Inc (°)	Azi (°)	TVD (usft)	SS (usft)	+N/-S (usft)	+E/-W (usft)	Vertical Section (usft)	Dogleg Rate (°/100usft)	Build Rate (°/100usft)	Turn Rate (°/100usft)
8,700.0	90.00	270.34	7,029.0	-1,995.97	529.2	-1,942.6	1,976.2	0.00	0.00	0.00
8,800.0	90.00	270.34	7,029.0	-1,995.97	529.8	-2,042.6	2,076.0	0.00	0.00	0.00
8,900.0	90.00	270.34	7,029.0	-1,995.96	530.4	-2,142.6	2,175.8	0.00	0.00	0.00
9,000.0	90.00	270.34	7,029.0	-1,995.96	531.0	-2,242.6	2,275.5	0.00	0.00	0.00
9,100.0	90.00	270.34	7,029.0	-1,995.96	531.6	-2,342.6	2,375.3	0.00	0.00	0.00
9,200.0	90.00	270.34	7,029.0	-1,995.96	532.2	-2,442.6	2,475.1	0.00	0.00	0.00
9,300.0	90.00	270.34	7,029.0	-1,995.96	532.8	-2,542.6	2,574.9	0.00	0.00	0.00
9,400.0	90.00	270.34	7,029.0	-1,995.96	533.4	-2,642.6	2,674.6	0.00	0.00	0.00
9,500.0	90.00	270.34	7,029.0	-1,995.96	534.0	-2,742.6	2,774.4	0.00	0.00	0.00
9,600.0	90.00	270.34	7,029.0	-1,995.95	534.6	-2,842.6	2,874.2	0.00	0.00	0.00
9,700.0	90.00	270.34	7,029.0	-1,995.95	535.2	-2,942.6	2,973.9	0.00	0.00	0.00
9,800.0	90.00	270.34	7,029.0	-1,995.95	535.8	-3,042.6	3,073.7	0.00	0.00	0.00
9,900.0	90.00	270.34	7,029.0	-1,995.95	536.4	-3,142.6	3,173.5	0.00	0.00	0.00
10,000.0	90.00	270.34	7,029.0	-1,995.95	537.0	-3,242.6	3,273.3	0.00	0.00	0.00
10,100.0	90.00	270.34	7,028.9	-1,995.95	537.6	-3,342.5	3,373.0	0.00	0.00	0.00
10,200.0	90.00	270.34	7,028.9	-1,995.95	538.2	-3,442.5	3,472.8	0.00	0.00	0.00
10,300.0	90.00	270.34	7,028.9	-1,995.95	538.8	-3,542.5	3,572.6	0.00	0.00	0.00
10,400.0	90.00	270.34	7,028.9	-1,995.95	539.4	-3,642.5	3,672.3	0.00	0.00	0.00
10,500.0	90.00	270.34	7,028.9	-1,995.95	540.0	-3,742.5	3,772.1	0.00	0.00	0.00
10,600.0	90.00	270.34	7,028.9	-1,995.95	540.5	-3,842.5	3,871.9	0.00	0.00	0.00
10,700.0	90.00	270.34	7,028.9	-1,995.95	541.1	-3,942.5	3,971.7	0.00	0.00	0.00
10,800.0	90.00	270.34	7,028.9	-1,995.95	541.7	-4,042.5	4,071.4	0.00	0.00	0.00
10,900.0	90.00	270.34	7,028.9	-1,995.95	542.3	-4,142.5	4,171.2	0.00	0.00	0.00
11,000.0	90.00	270.34	7,028.9	-1,995.95	542.9	-4,242.5	4,271.0	0.00	0.00	0.00
11,100.0	90.00	270.34	7,028.9	-1,995.95	543.5	-4,342.5	4,370.7	0.00	0.00	0.00
11,200.0	90.00	270.34	7,028.9	-1,995.95	544.1	-4,442.5	4,470.5	0.00	0.00	0.00
11,300.0	90.00	270.34	7,028.9	-1,995.95	544.7	-4,542.5	4,570.3	0.00	0.00	0.00
11,400.0	90.00	270.34	7,028.9	-1,995.95	545.3	-4,642.5	4,670.1	0.00	0.00	0.00
11,500.0	90.00	270.34	7,028.9	-1,995.95	545.9	-4,742.5	4,769.8	0.00	0.00	0.00
11,600.0	90.00	270.34	7,028.9	-1,995.95	546.5	-4,842.5	4,869.6	0.00	0.00	0.00
11,700.0	90.00	270.34	7,028.9	-1,995.95	547.1	-4,942.5	4,969.4	0.00	0.00	0.00
11,800.0	90.00	270.34	7,029.0	-1,995.95	547.7	-5,042.5	5,069.1	0.00	0.00	0.00
11,900.0	90.00	270.34	7,029.0	-1,995.95	548.3	-5,142.5	5,168.9	0.00	0.00	0.00
12,000.0	90.00	270.34	7,029.0	-1,995.95	548.9	-5,242.5	5,268.7	0.00	0.00	0.00
12,100.0	90.00	270.34	7,029.0	-1,995.95	549.4	-5,342.5	5,368.5	0.00	0.00	0.00
12,200.0	90.00	270.34	7,029.0	-1,995.95	550.0	-5,442.5	5,468.2	0.00	0.00	0.00
12,300.0	90.00	270.34	7,029.0	-1,995.96	550.6	-5,542.5	5,568.0	0.00	0.00	0.00
12,400.0	90.00	270.34	7,029.0	-1,995.96	551.2	-5,642.5	5,667.8	0.00	0.00	0.00
12,500.0	90.00	270.34	7,029.0	-1,995.96	551.8	-5,742.5	5,767.5	0.00	0.00	0.00
12,600.0	90.00	270.34	7,029.0	-1,995.96	552.4	-5,842.5	5,867.3	0.00	0.00	0.00
12,700.0	90.00	270.34	7,029.0	-1,995.96	553.0	-5,942.5	5,967.1	0.00	0.00	0.00
12,800.0	90.00	270.34	7,029.0	-1,995.96	553.6	-6,042.5	6,066.8	0.00	0.00	0.00
12,900.0	90.00	270.34	7,029.0	-1,995.96	554.2	-6,142.5	6,166.6	0.00	0.00	0.00
13,000.0	90.00	270.34	7,029.0	-1,995.97	554.8	-6,242.5	6,266.4	0.00	0.00	0.00
13,100.0	90.00	270.34	7,029.0	-1,995.97	555.3	-6,342.5	6,366.2	0.00	0.00	0.00
13,200.0	90.00	270.34	7,029.0	-1,995.97	555.9	-6,442.5	6,465.9	0.00	0.00	0.00
13,300.0	90.00	270.34	7,029.0	-1,995.97	556.5	-6,542.5	6,565.7	0.00	0.00	0.00
13,400.0	90.00	270.34	7,029.0	-1,995.97	557.1	-6,642.5	6,665.5	0.00	0.00	0.00
13,500.0	90.00	270.34	7,029.0	-1,995.98	557.7	-6,742.5	6,765.2	0.00	0.00	0.00
13,600.0	90.00	270.34	7,029.0	-1,995.98	558.3	-6,842.5	6,865.0	0.00	0.00	0.00
13,700.0	90.00	270.34	7,029.0	-1,995.98	558.9	-6,942.5	6,964.8	0.00	0.00	0.00
13,800.0	90.00	270.34	7,029.0	-1,995.98	559.5	-7,042.5	7,064.6	0.00	0.00	0.00
13,900.0	90.00	270.34	7,029.0	-1,995.99	560.1	-7,142.5	7,164.3	0.00	0.00	0.00
14,000.0	90.00	270.34	7,029.0	-1,995.99	560.6	-7,242.5	7,264.1	0.00	0.00	0.00

Database:	EDM 5000.1 Single User Db	Local Co-ordinate Reference:	Well JOHNSONS CORNER 9
Company:	EXTRACTION OIL & GAS	TVD Reference:	KB @ 5033.0usft (Original Well Elev)
Project:	WELD COUNTY, COLORADO (NAD 83)	MD Reference:	KB @ 5033.0usft (Original Well Elev)
Site:	SEC. 35 T5N R68W 6th P.M.	North Reference:	True
Well:	JOHNSONS CORNER 9	Survey Calculation Method:	Minimum Curvature
Wellbore:	ORIGINAL WELLBORE		
Design:	PROPOSAL #1		

Planned Survey

MD (usft)	Inc (°)	Azi (°)	TVD (usft)	SS (usft)	+N/-S (usft)	+E/-W (usft)	Vertical Section (usft)	Dogleg Rate (°/100usft)	Build Rate (°/100usft)	Turn Rate (°/100usft)
14,100.0	90.00	270.34	7,029.0	-1,995.99	561.2	-7,342.5	7,363.9	0.00	0.00	0.00
14,200.0	90.00	270.34	7,029.0	-1,995.99	561.8	-7,442.5	7,463.6	0.00	0.00	0.00
14,300.0	90.00	270.34	7,029.0	-1,996.00	562.4	-7,542.5	7,563.4	0.00	0.00	0.00
BHL - JOHNSONS CORNER 9										
14,392.6	90.00	270.34	7,029.0	-1,996.00	563.0	-7,635.0	7,655.8	0.00	0.00	0.00

Formations

MD (usft)	TVD (usft)	Name	Lithology	Dip (°)	Dip Direction (°)
3,369.9	3,360.0	PARKMAN		0.00	
4,102.2	4,087.0	SUSSEX		0.00	
4,495.0	4,477.0	SHANNON		0.00	
6,974.2	6,887.0	NIOBRARA		0.00	
7,386.4	7,029.0	NIO B TGT		0.00	

Plan Annotations

MD (usft)	TVD (usft)	Local Coordinates		Comment
		+N/-S (usft)	+E/-W (usft)	
1,750.0	1,750.0	0.0	0.0	START NUDGE (2°/100ft BUR)
2,092.8	2,092.0	20.4	-2.2	EOB TO 6.86° INC
6,113.7	6,084.1	497.5	-53.9	END OF TANGENT
6,456.5	6,426.1	517.9	-56.1	EOD TO VERTICAL
6,486.5	6,456.1	517.9	-56.1	KOP (10°/100ft BUR)
7,386.4	7,029.0	521.3	-629.0	7" ICP - JOHNSON CORNER 9
14,392.6	7,029.0	563.0	-7,635.0	BHL - JOHNSONS CORNER 9