

EXTRACTION OIL & GAS

WELD COUNTY, COLORADO (NAD 83)

SEC. 35 T5N R68W 6th P.M.

JOHNSONS CORNER 3

ORIGINAL WELLBORE

14 August, 2014

Plan: PROPOSAL #1

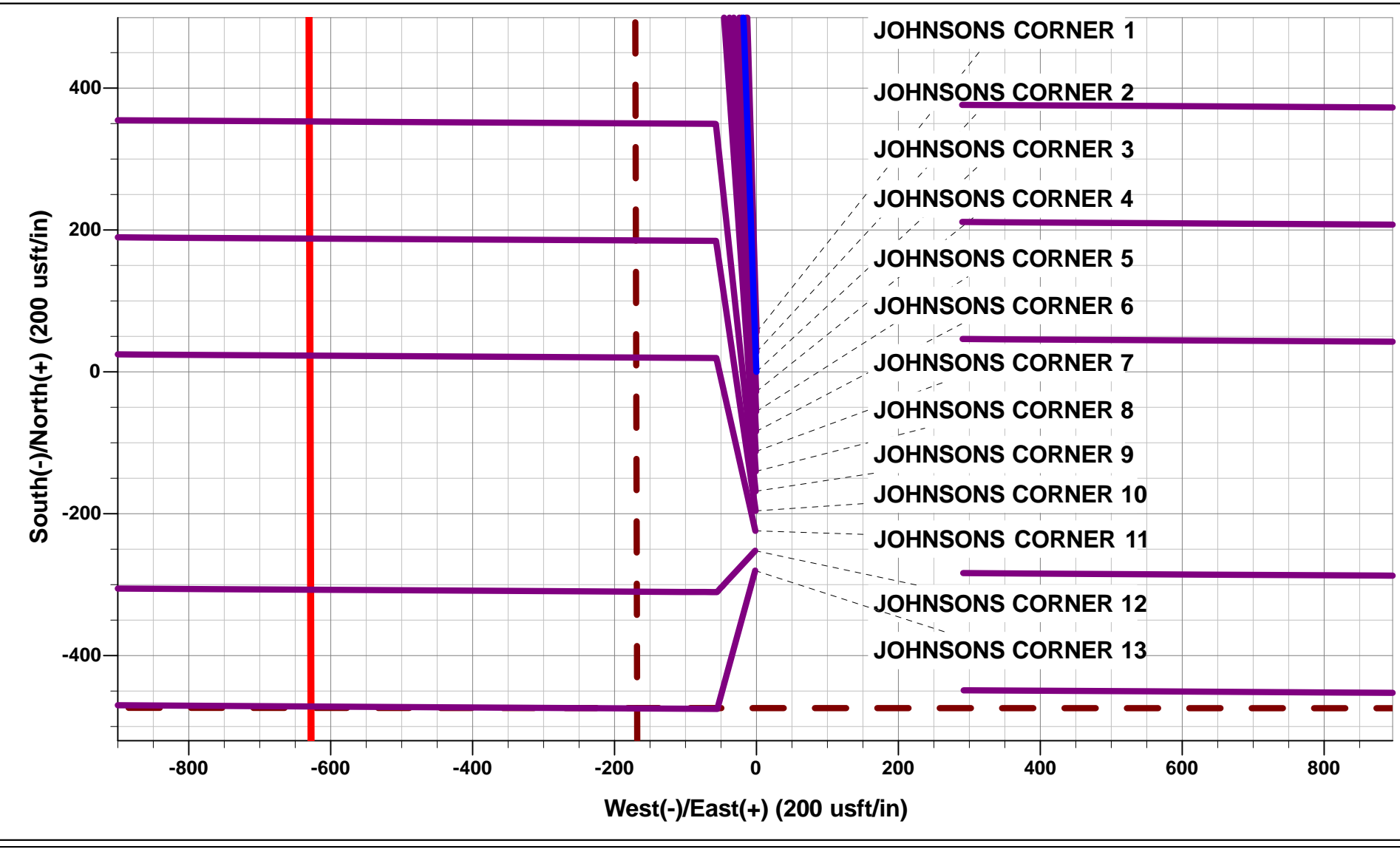




Project: WELD COUNTY, COLORADO (NAD 83)
Site: SEC. 35 T5N R68W 6th P.M.
Well: JOHNSONS CORNER 3
Wellbore: ORIGINAL WELLBORE
Design: PROPOSAL #1

ANNOTATIONS										
TVD	MD	Inc	Azi	+N/-S	+E/-W	VSect	Dep	Annotation		
1150.0	1150.0	0.00	0.00	0.0	0.0	0.0	0.0	START NUDGE (2°/100ft BUR)		
2215.4	2241.6	21.83	357.91	205.3	-7.5	52.3	205.5	EOB TO 21.83° INC		
5360.7	5630.0	21.83	357.91	1464.6	-53.3	372.9	1465.5	END OF TANGENT		
6426.1	6721.6	0.00	0.00	1669.9	-60.8	425.2	1671.0	EOD TO VERTICAL		
6456.1	6751.6	0.00	0.00	1669.9	-60.8	425.2	1671.0	KOP (10°/100ft BUR)		
7029.0	7651.5	90.00	270.34	1673.3	-633.7	984.9	2243.9	7" ICP - JOHNSONS CORNER 3		
7029.0	14655.6	90.00	270.34	1714.9	-7637.7	7827.8	9248.0	BHL - JOHNSONS CORNER 3		

WELLBORE TARGET DETAILS (LAT/LONG)					
Name	TVD	+N/-S	+E/-W	Latitude	Longitude
KOP - JOHNSONS CORNER 3	6456.1	1669.9	-60.8	40.362291	-104.973630
7" ICP - JOHNSONS CORNER 3	7029.0	1673.3	-633.7	40.362300	-104.975686
BHL - JOHNSONS CORNER 3	7029.0	1714.9	-7637.7	40.362411	-105.000819



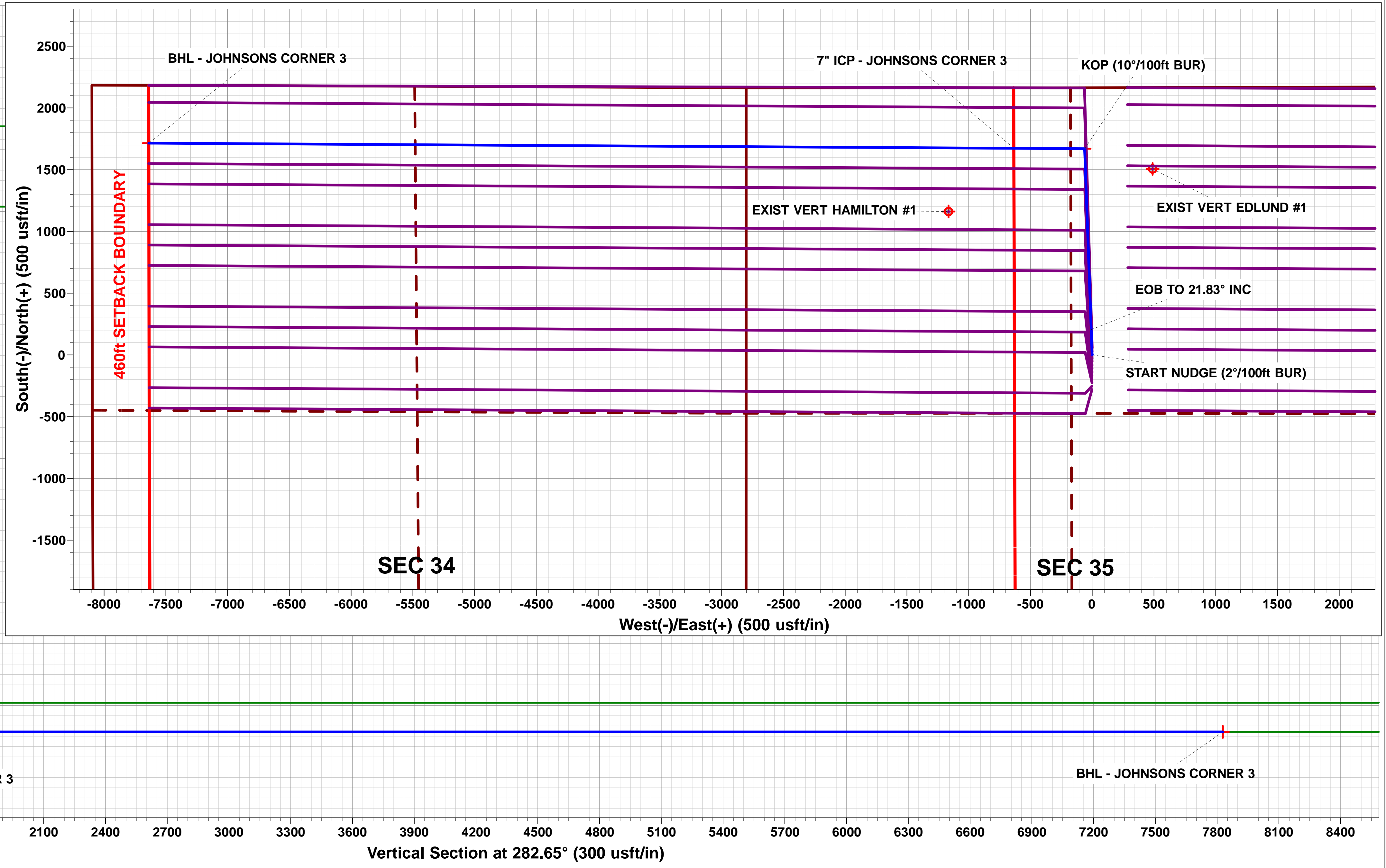
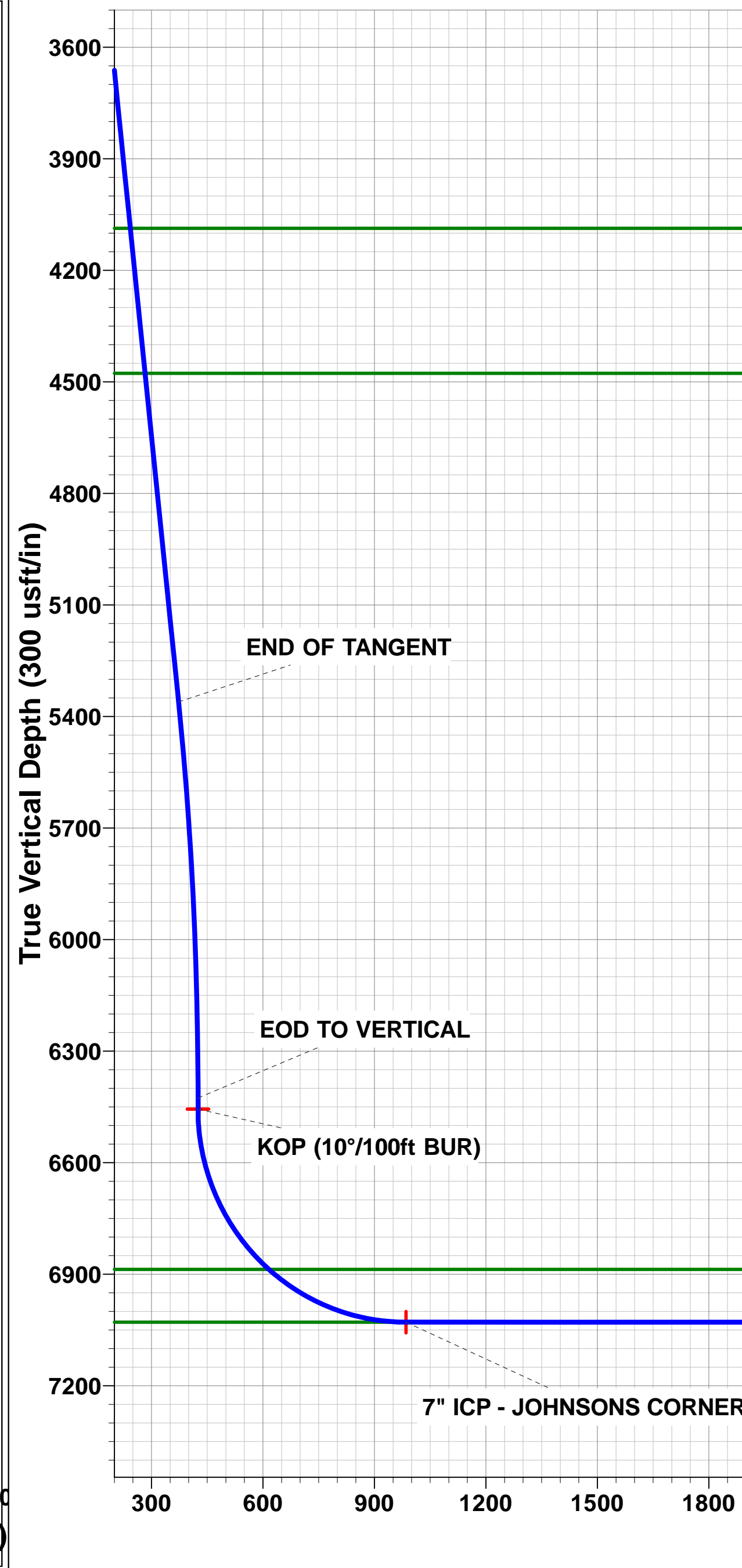
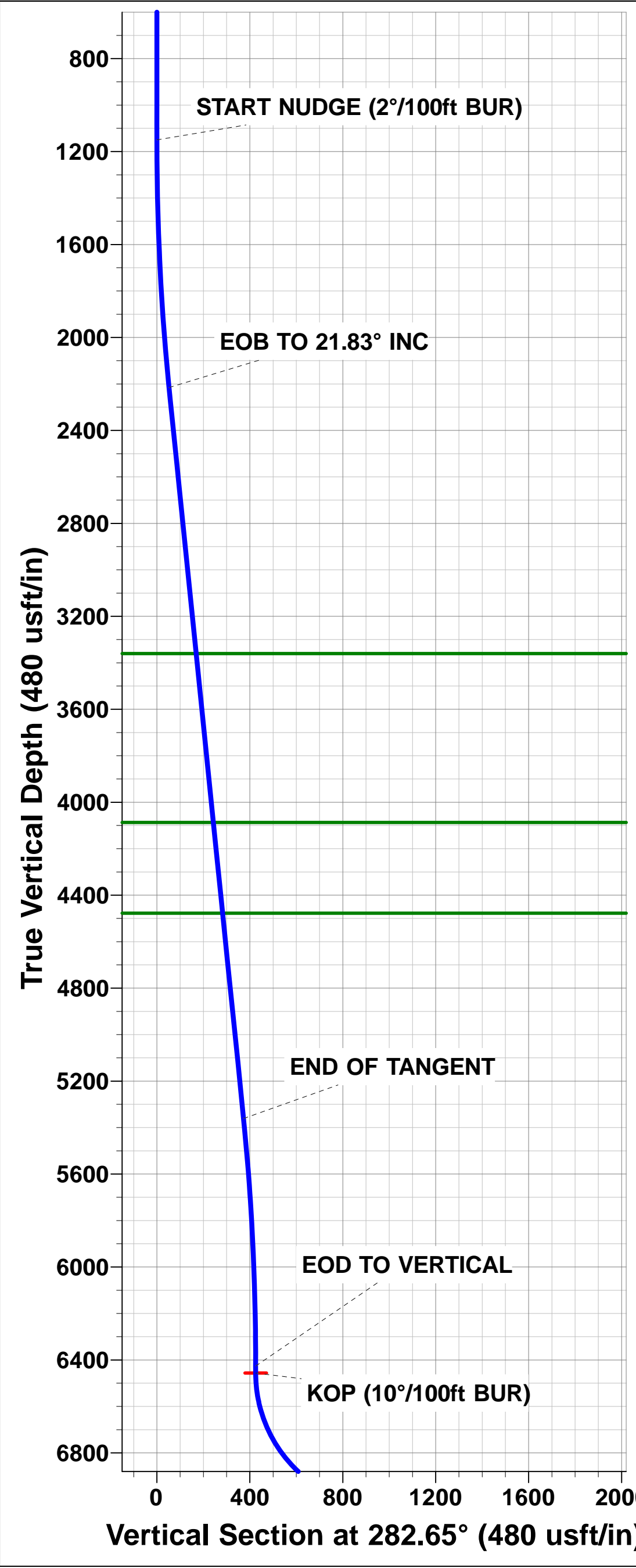
FORMATION TOP DETAILS		
TVDPath	MDPath	Formation
3360.0	3474.7	PARKMAN
4087.0	4257.8	SUSSEX
4477.0	4678.0	SHANNON
6887.0	7239.3	NIOBRARA
7029.0	7651.5	NIO B TGT

T

M

Azimuths to True North
Magnetic North: 8.55°

Magnetic Field
Strength: 52752.2snT
Dip Angle: 66.87°
Date: 14/08/2014
Model: IGRF2010



Planning Report



Database:	EDM 5000.1 Single User Db	Local Co-ordinate Reference:	Well JOHNSONS CORNER 3
Company:	EXTRACTION OIL & GAS	TVD Reference:	KB @ 5033.0usft (Original Well Elev)
Project:	WELD COUNTY, COLORADO (NAD 83)	MD Reference:	KB @ 5033.0usft (Original Well Elev)
Site:	SEC. 35 T5N R68W 6th P.M.	North Reference:	True
Well:	JOHNSONS CORNER 3	Survey Calculation Method:	Minimum Curvature
Wellbore:	ORIGINAL WELLBORE		
Design:	PROPOSAL #1		

Project	WELD COUNTY, COLORADO (NAD 83)		
Map System:	US State Plane 1983	System Datum:	Mean Sea Level
Geo Datum:	North American Datum 1983		
Map Zone:	Colorado Northern Zone		Using geodetic scale factor

Site	SEC. 35 T5N R68W 6th P.M.		
Site Position:		Northing:	1,373,645.09 usft
From:	Lat/Long	Easting:	3,146,750.79 usft
Position Uncertainty:	0.0 usft	Slot Radius:	1.10000ft
		Latitude:	40.357861
		Longitude:	-104.973411
		Grid Convergence:	0.34 °

Well	JOHNSONS CORNER 3		
Well Position	+N-S	-56.1 usft	Northing:
	+E-W	-0.3 usft	Easting:
Position Uncertainty		0.0 usft	Wellhead Elevation:
			Latitude:
			Longitude:
			Ground Level:

Wellbore	ORIGINAL WELLBORE				
Magnetics	Model Name	Sample Date	Declination (°)	Dip Angle (°)	Field Strength (nT)
	IGRF2010	14/08/2014	8.55	66.87	52,752

Design	PROPOSAL #1			
Audit Notes:				
Version:	Phase:	PROTOTYPE	Tie On Depth:	0.0
Vertical Section:	Depth From (TVD) (usft)	+N-S (usft)	+E-W (usft)	Direction (°)
	7,029.0	0.0	0.0	282.65

Plan Sections											
MD (usft)	Inc (°)	Azi (°)	Vertical Depth	SS (usft)	+N-S (usft)	+E-W (usft)	Dogleg Rate (°/100usf)	Build Rate (°/100usf)	Turn Rate (°/100usf)	TFO (°)	Target
0.0	0.00	0.00	0.0	-5,033.0	0.0	0.0	0.00	0.00	0.00	0.00	
1,150.0	0.00	0.00	1,150.0	-3,883.0	0.0	0.0	0.00	0.00	0.00	0.00	
2,241.6	21.83	357.91	2,215.4	-2,817.6	205.3	-7.5	2.00	2.00	0.00	357.91	
5,630.0	21.83	357.91	5,360.7	327.7	1,464.6	-53.3	0.00	0.00	0.00	0.00	
6,721.6	0.00	0.00	6,426.1	1,393.1	1,669.9	-60.8	2.00	-2.00	0.00	180.00	
6,751.6	0.00	0.00	6,456.1	1,423.1	1,669.9	-60.8	0.00	0.00	0.00	0.00	KOP - JOHNSONS
7,651.5	90.00	270.34	7,029.0	1,996.0	1,673.3	-633.7	10.00	10.00	-9.96	270.34	7" ICP - JOHNSON
14,655.6	90.00	270.34	7,029.0	1,996.0	1,714.9	-7,637.7	0.00	0.00	0.00	141.57	BHL - JOHNSONS

Planning Report



Database:	EDM 5000.1 Single User Db	Local Co-ordinate Reference:	Well JOHNSONS CORNER 3
Company:	EXTRACTION OIL & GAS	TVD Reference:	KB @ 5033.0usft (Original Well Elev)
Project:	WELD COUNTY, COLORADO (NAD 83)	MD Reference:	KB @ 5033.0usft (Original Well Elev)
Site:	SEC. 35 T5N R68W 6th P.M.	North Reference:	True
Well:	JOHNSONS CORNER 3	Survey Calculation Method:	Minimum Curvature
Wellbore:	ORIGINAL WELLBORE		
Design:	PROPOSAL #1		

Planned Survey

MD (usft)	Inc (°)	Azi (°)	TVD (usft)	SS (usft)	+N/-S (usft)	+E/-W (usft)	Vertical Section (usft)	Dogleg Rate (°/100usft)	Build Rate (°/100usft)	Turn Rate (°/100usft)
0.0	0.00	0.00	0.0	5,033.00	0.0	0.0	0.0	0.00	0.00	0.00
100.0	0.00	0.00	100.0	4,933.00	0.0	0.0	0.0	0.00	0.00	0.00
200.0	0.00	0.00	200.0	4,833.00	0.0	0.0	0.0	0.00	0.00	0.00
300.0	0.00	0.00	300.0	4,733.00	0.0	0.0	0.0	0.00	0.00	0.00
400.0	0.00	0.00	400.0	4,633.00	0.0	0.0	0.0	0.00	0.00	0.00
500.0	0.00	0.00	500.0	4,533.00	0.0	0.0	0.0	0.00	0.00	0.00
600.0	0.00	0.00	600.0	4,433.00	0.0	0.0	0.0	0.00	0.00	0.00
700.0	0.00	0.00	700.0	4,333.00	0.0	0.0	0.0	0.00	0.00	0.00
800.0	0.00	0.00	800.0	4,233.00	0.0	0.0	0.0	0.00	0.00	0.00
900.0	0.00	0.00	900.0	4,133.00	0.0	0.0	0.0	0.00	0.00	0.00
1,000.0	0.00	0.00	1,000.0	4,033.00	0.0	0.0	0.0	0.00	0.00	0.00
1,100.0	0.00	0.00	1,100.0	3,933.00	0.0	0.0	0.0	0.00	0.00	0.00
START NUDGE (2°/100ft BUR)										
1,150.0	0.00	0.00	1,150.0	3,883.00	0.0	0.0	0.0	0.00	0.00	0.00
1,200.0	1.00	357.91	1,200.0	3,833.00	0.4	0.0	0.1	2.00	2.00	0.00
1,300.0	3.00	357.91	1,299.9	3,733.07	3.9	-0.1	1.0	2.00	2.00	0.00
1,400.0	5.00	357.91	1,399.7	3,633.32	10.9	-0.4	2.8	2.00	2.00	0.00
1,500.0	7.00	357.91	1,499.1	3,533.87	21.3	-0.8	5.4	2.00	2.00	0.00
1,600.0	9.00	357.91	1,598.2	3,434.85	35.2	-1.3	9.0	2.00	2.00	0.00
1,700.0	11.00	357.91	1,696.6	3,336.37	52.6	-1.9	13.4	2.00	2.00	0.00
1,800.0	13.00	357.91	1,794.4	3,238.56	73.4	-2.7	18.7	2.00	2.00	0.00
1,900.0	15.00	357.91	1,891.5	3,141.54	97.6	-3.6	24.8	2.00	2.00	0.00
2,000.0	17.00	357.91	1,987.6	3,045.42	125.1	-4.6	31.8	2.00	2.00	0.00
2,100.0	19.00	357.91	2,082.7	2,950.32	156.0	-5.7	39.7	2.00	2.00	0.00
2,200.0	21.00	357.91	2,176.6	2,856.35	190.2	-6.9	48.4	2.00	2.00	0.00
EOB TO 21.83° INC										
2,241.6	21.83	357.91	2,215.4	2,817.64	205.3	-7.5	52.3	2.00	2.00	0.00
2,300.0	21.83	357.91	2,269.6	2,763.41	227.0	-8.3	57.8	0.00	0.00	0.00
2,400.0	21.83	357.91	2,362.4	2,670.58	264.2	-9.6	67.3	0.00	0.00	0.00
2,500.0	21.83	357.91	2,455.2	2,577.76	301.4	-11.0	76.7	0.00	0.00	0.00
2,600.0	21.83	357.91	2,548.1	2,484.93	338.5	-12.3	86.2	0.00	0.00	0.00
2,700.0	21.83	357.91	2,640.9	2,392.10	375.7	-13.7	95.7	0.00	0.00	0.00
2,800.0	21.83	357.91	2,733.7	2,299.27	412.9	-15.0	105.1	0.00	0.00	0.00
2,900.0	21.83	357.91	2,826.6	2,206.44	450.0	-16.4	114.6	0.00	0.00	0.00
3,000.0	21.83	357.91	2,919.4	2,113.62	487.2	-17.7	124.0	0.00	0.00	0.00
3,100.0	21.83	357.91	3,012.2	2,020.79	524.3	-19.1	133.5	0.00	0.00	0.00
3,200.0	21.83	357.91	3,105.0	1,927.96	561.5	-20.4	143.0	0.00	0.00	0.00
3,300.0	21.83	357.91	3,197.9	1,835.13	598.7	-21.8	152.4	0.00	0.00	0.00
3,400.0	21.83	357.91	3,290.7	1,742.30	635.8	-23.2	161.9	0.00	0.00	0.00
PARKMAN										
3,474.7	21.83	357.91	3,360.0	1,673.00	663.6	-24.2	168.9	0.00	0.00	0.00
3,500.0	21.83	357.91	3,383.5	1,649.48	673.0	-24.5	171.3	0.00	0.00	0.00
3,600.0	21.83	357.91	3,476.4	1,556.65	710.2	-25.9	180.8	0.00	0.00	0.00
3,700.0	21.83	357.91	3,569.2	1,463.82	747.3	-27.2	190.3	0.00	0.00	0.00
3,800.0	21.83	357.91	3,662.0	1,370.99	784.5	-28.6	199.7	0.00	0.00	0.00
3,900.0	21.83	357.91	3,754.8	1,278.16	821.7	-29.9	209.2	0.00	0.00	0.00
4,000.0	21.83	357.91	3,847.7	1,185.34	858.8	-31.3	218.7	0.00	0.00	0.00
4,100.0	21.83	357.91	3,940.5	1,092.51	896.0	-32.6	228.1	0.00	0.00	0.00
4,200.0	21.83	357.91	4,033.3	999.68	933.1	-34.0	237.6	0.00	0.00	0.00
SUSSEX										
4,257.8	21.83	357.91	4,087.0	946.00	954.6	-34.8	243.1	0.00	0.00	0.00
4,300.0	21.83	357.91	4,126.1	906.85	970.3	-35.3	247.0	0.00	0.00	0.00
4,400.0	21.83	357.91	4,219.0	814.02	1,007.5	-36.7	256.5	0.00	0.00	0.00
4,500.0	21.83	357.91	4,311.8	721.20	1,044.6	-38.0	266.0	0.00	0.00	0.00

Planning Report



Database:	EDM 5000.1 Single User Db	Local Co-ordinate Reference:	Well JOHNSONS CORNER 3
Company:	EXTRACTION OIL & GAS	TVD Reference:	KB @ 5033.0usft (Original Well Elev)
Project:	WELD COUNTY, COLORADO (NAD 83)	MD Reference:	KB @ 5033.0usft (Original Well Elev)
Site:	SEC. 35 T5N R68W 6th P.M.	North Reference:	True
Well:	JOHNSONS CORNER 3	Survey Calculation Method:	Minimum Curvature
Wellbore:	ORIGINAL WELLBORE		
Design:	PROPOSAL #1		

Planned Survey

MD (usft)	Inc (°)	Azi (°)	TVD (usft)	SS (usft)	+N/-S (usft)	+E/-W (usft)	Vertical Section (usft)	Dogleg Rate (°/100usft)	Build Rate (°/100usft)	Turn Rate (°/100usft)
4,600.0	21.83	357.91	4,404.6	628.37	1,081.8	-39.4	275.4	0.00	0.00	0.00
SHANNON										
4,678.0	21.83	357.91	4,477.0	556.00	1,110.8	-40.4	282.8	0.00	0.00	0.00
4,700.0	21.83	357.91	4,497.5	535.54	1,119.0	-40.7	284.9	0.00	0.00	0.00
4,800.0	21.83	357.91	4,590.3	442.71	1,156.1	-42.1	294.4	0.00	0.00	0.00
4,900.0	21.83	357.91	4,683.1	349.88	1,193.3	-43.4	303.8	0.00	0.00	0.00
5,000.0	21.83	357.91	4,775.9	257.06	1,230.5	-44.8	313.3	0.00	0.00	0.00
5,100.0	21.83	357.91	4,868.8	164.23	1,267.6	-46.2	322.7	0.00	0.00	0.00
5,200.0	21.83	357.91	4,961.6	71.40	1,304.8	-47.5	332.2	0.00	0.00	0.00
5,300.0	21.83	357.91	5,054.4	-21.43	1,341.9	-48.9	341.7	0.00	0.00	0.00
5,400.0	21.83	357.91	5,147.3	-114.26	1,379.1	-50.2	351.1	0.00	0.00	0.00
5,500.0	21.83	357.91	5,240.1	-207.08	1,416.3	-51.6	360.6	0.00	0.00	0.00
5,600.0	21.83	357.91	5,332.9	-299.91	1,453.4	-52.9	370.0	0.00	0.00	0.00
END OF TANGENT										
5,630.0	21.83	357.91	5,360.7	-327.74	1,464.6	-53.3	372.9	0.00	0.00	0.00
5,700.0	20.43	357.91	5,426.1	-393.05	1,489.8	-54.2	379.3	2.00	-2.00	0.00
5,800.0	18.43	357.91	5,520.4	-487.35	1,523.0	-55.5	387.8	2.00	-2.00	0.00
5,900.0	16.43	357.91	5,615.8	-582.75	1,553.0	-56.5	395.4	2.00	-2.00	0.00
6,000.0	14.43	357.91	5,712.1	-679.14	1,579.6	-57.5	402.2	2.00	-2.00	0.00
6,100.0	12.43	357.91	5,809.4	-776.40	1,602.8	-58.4	408.1	2.00	-2.00	0.00
6,200.0	10.43	357.91	5,907.4	-874.41	1,622.6	-59.1	413.1	2.00	-2.00	0.00
6,300.0	8.43	357.91	6,006.1	-973.06	1,639.0	-59.7	417.3	2.00	-2.00	0.00
6,400.0	6.43	357.91	6,105.2	-1,072.21	1,651.9	-60.1	420.6	2.00	-2.00	0.00
6,500.0	4.43	357.91	6,204.8	-1,171.76	1,661.3	-60.5	423.0	2.00	-2.00	0.00
6,600.0	2.43	357.91	6,304.6	-1,271.57	1,667.3	-60.7	424.5	2.00	-2.00	0.00
6,700.0	0.43	357.91	6,404.5	-1,371.54	1,669.8	-60.8	425.1	2.00	-2.00	0.00
EOD TO VERTICAL										
6,721.6	0.00	0.00	6,426.1	-1,393.10	1,669.9	-60.8	425.2	2.00	-2.00	0.00
KOP (10°/100ft BUR)										
6,751.6	0.00	0.00	6,456.1	-1,423.10	1,669.9	-60.8	425.2	0.00	0.00	0.00
6,800.0	4.84	270.34	6,504.5	-1,471.48	1,669.9	-62.8	427.2	10.00	10.00	0.00
6,900.0	14.85	270.34	6,602.9	-1,569.88	1,670.0	-79.9	443.8	10.00	10.00	0.00
7,000.0	24.85	270.34	6,696.8	-1,663.82	1,670.2	-113.8	477.0	10.00	10.00	0.00
7,100.0	34.85	270.34	6,783.5	-1,750.45	1,670.5	-163.5	525.5	10.00	10.00	0.00
7,200.0	44.85	270.34	6,860.1	-1,827.13	1,670.9	-227.5	588.0	10.00	10.00	0.00
NIOBRARA										
7,239.3	48.78	270.34	6,887.0	-1,854.00	1,671.1	-256.2	616.0	10.00	10.00	0.00
7,300.0	54.85	270.34	6,924.5	-1,891.53	1,671.3	-303.9	662.6	10.00	10.00	0.00
7,400.0	64.85	270.34	6,974.7	-1,941.69	1,671.8	-390.2	747.0	10.00	10.00	0.00
7,500.0	74.85	270.34	7,009.1	-1,976.09	1,672.4	-484.0	838.6	10.00	10.00	0.00
7,600.0	84.85	270.34	7,026.7	-1,993.69	1,673.0	-582.3	934.7	10.00	10.00	0.00
7" ICP - JOHNSONS CORNER 3 - NIO B TGT										
7,651.5	90.00	270.34	7,029.0	-1,996.00	1,673.3	-633.7	984.9	10.00	10.00	0.00
7,700.0	90.00	270.34	7,029.0	-1,996.00	1,673.6	-682.2	1,032.3	0.00	0.00	0.00
7,800.0	90.00	270.34	7,029.0	-1,995.99	1,674.2	-782.2	1,130.0	0.00	0.00	0.00
7,900.0	90.00	270.34	7,029.0	-1,995.99	1,674.8	-882.2	1,227.7	0.00	0.00	0.00
8,000.0	90.00	270.34	7,029.0	-1,995.99	1,675.3	-982.2	1,325.4	0.00	0.00	0.00
8,100.0	90.00	270.34	7,029.0	-1,995.98	1,675.9	-1,082.2	1,423.1	0.00	0.00	0.00
8,200.0	90.00	270.34	7,029.0	-1,995.98	1,676.5	-1,182.2	1,520.8	0.00	0.00	0.00
8,300.0	90.00	270.34	7,029.0	-1,995.98	1,677.1	-1,282.2	1,618.5	0.00	0.00	0.00
8,400.0	90.00	270.34	7,029.0	-1,995.98	1,677.7	-1,382.2	1,716.2	0.00	0.00	0.00
8,500.0	90.00	270.34	7,029.0	-1,995.97	1,678.3	-1,482.2	1,813.9	0.00	0.00	0.00
8,600.0	90.00	270.34	7,029.0	-1,995.97	1,678.9	-1,582.2	1,911.6	0.00	0.00	0.00

Planning Report



Database:	EDM 5000.1 Single User Db	Local Co-ordinate Reference:	Well JOHNSONS CORNER 3
Company:	EXTRACTION OIL & GAS	TVD Reference:	KB @ 5033.0usft (Original Well Elev)
Project:	WELD COUNTY, COLORADO (NAD 83)	MD Reference:	KB @ 5033.0usft (Original Well Elev)
Site:	SEC. 35 T5N R68W 6th P.M.	North Reference:	True
Well:	JOHNSONS CORNER 3	Survey Calculation Method:	Minimum Curvature
Wellbore:	ORIGINAL WELLBORE		
Design:	PROPOSAL #1		

Planned Survey										
MD (usft)	Inc (°)	Azi (°)	TVD (usft)	SS (usft)	+N/-S (usft)	+E/-W (usft)	Vertical Section (usft)	Dogleg Rate (°/100usft)	Build Rate (°/100usft)	Turn Rate (°/100usft)
8,700.0	90.00	270.34	7,029.0	-1,995.97	1,679.5	-1,682.2	2,009.3	0.00	0.00	0.00
8,800.0	90.00	270.34	7,029.0	-1,995.96	1,680.1	-1,782.2	2,107.0	0.00	0.00	0.00
8,900.0	90.00	270.34	7,029.0	-1,995.96	1,680.7	-1,882.2	2,204.7	0.00	0.00	0.00
9,000.0	90.00	270.34	7,029.0	-1,995.96	1,681.3	-1,982.2	2,302.4	0.00	0.00	0.00
9,100.0	90.00	270.34	7,029.0	-1,995.96	1,681.9	-2,082.2	2,400.1	0.00	0.00	0.00
9,200.0	90.00	270.34	7,029.0	-1,995.96	1,682.5	-2,182.2	2,497.8	0.00	0.00	0.00
9,300.0	90.00	270.34	7,029.0	-1,995.95	1,683.0	-2,282.2	2,595.5	0.00	0.00	0.00
9,400.0	90.00	270.34	7,029.0	-1,995.95	1,683.6	-2,382.2	2,693.2	0.00	0.00	0.00
9,500.0	90.00	270.34	7,029.0	-1,995.95	1,684.2	-2,482.2	2,790.9	0.00	0.00	0.00
9,600.0	90.00	270.34	7,028.9	-1,995.95	1,684.8	-2,582.2	2,888.6	0.00	0.00	0.00
9,700.0	90.00	270.34	7,028.9	-1,995.95	1,685.4	-2,682.2	2,986.3	0.00	0.00	0.00
9,800.0	90.00	270.34	7,028.9	-1,995.95	1,686.0	-2,782.2	3,084.0	0.00	0.00	0.00
9,900.0	90.00	270.34	7,028.9	-1,995.94	1,686.6	-2,882.2	3,181.7	0.00	0.00	0.00
10,000.0	90.00	270.34	7,028.9	-1,995.94	1,687.2	-2,982.2	3,279.4	0.00	0.00	0.00
10,100.0	90.00	270.34	7,028.9	-1,995.94	1,687.8	-3,082.2	3,377.1	0.00	0.00	0.00
10,200.0	90.00	270.34	7,028.9	-1,995.94	1,688.4	-3,182.2	3,474.8	0.00	0.00	0.00
10,300.0	90.00	270.34	7,028.9	-1,995.94	1,689.0	-3,282.2	3,572.5	0.00	0.00	0.00
10,400.0	90.00	270.34	7,028.9	-1,995.94	1,689.6	-3,382.2	3,670.2	0.00	0.00	0.00
10,500.0	90.00	270.34	7,028.9	-1,995.94	1,690.2	-3,482.2	3,767.9	0.00	0.00	0.00
10,600.0	90.00	270.34	7,028.9	-1,995.94	1,690.8	-3,582.2	3,865.6	0.00	0.00	0.00
10,700.0	90.00	270.34	7,028.9	-1,995.94	1,691.3	-3,682.2	3,963.3	0.00	0.00	0.00
10,800.0	90.00	270.34	7,028.9	-1,995.94	1,691.9	-3,782.2	4,061.0	0.00	0.00	0.00
10,900.0	90.00	270.34	7,028.9	-1,995.94	1,692.5	-3,882.2	4,158.7	0.00	0.00	0.00
11,000.0	90.00	270.34	7,028.9	-1,995.94	1,693.1	-3,982.2	4,256.3	0.00	0.00	0.00
11,100.0	90.00	270.34	7,028.9	-1,995.94	1,693.7	-4,082.2	4,354.0	0.00	0.00	0.00
11,200.0	90.00	270.34	7,028.9	-1,995.94	1,694.3	-4,182.2	4,451.7	0.00	0.00	0.00
11,300.0	90.00	270.34	7,028.9	-1,995.94	1,694.9	-4,282.2	4,549.4	0.00	0.00	0.00
11,400.0	90.00	270.34	7,028.9	-1,995.94	1,695.5	-4,382.2	4,647.1	0.00	0.00	0.00
11,500.0	90.00	270.34	7,028.9	-1,995.94	1,696.1	-4,482.2	4,744.8	0.00	0.00	0.00
11,600.0	90.00	270.34	7,028.9	-1,995.94	1,696.7	-4,582.1	4,842.5	0.00	0.00	0.00
11,700.0	90.00	270.34	7,028.9	-1,995.94	1,697.3	-4,682.1	4,940.2	0.00	0.00	0.00
11,800.0	90.00	270.34	7,028.9	-1,995.94	1,697.9	-4,782.1	5,037.9	0.00	0.00	0.00
11,900.0	90.00	270.34	7,028.9	-1,995.94	1,698.5	-4,882.1	5,135.6	0.00	0.00	0.00
12,000.0	90.00	270.34	7,028.9	-1,995.94	1,699.1	-4,982.1	5,233.3	0.00	0.00	0.00
12,100.0	90.00	270.34	7,028.9	-1,995.94	1,699.7	-5,082.1	5,331.0	0.00	0.00	0.00
12,200.0	90.00	270.34	7,028.9	-1,995.94	1,700.3	-5,182.1	5,428.7	0.00	0.00	0.00
12,300.0	90.00	270.34	7,028.9	-1,995.94	1,700.9	-5,282.1	5,526.4	0.00	0.00	0.00
12,400.0	90.00	270.34	7,028.9	-1,995.94	1,701.5	-5,382.1	5,624.1	0.00	0.00	0.00
12,500.0	90.00	270.34	7,028.9	-1,995.95	1,702.0	-5,482.1	5,721.8	0.00	0.00	0.00
12,600.0	90.00	270.34	7,028.9	-1,995.95	1,702.6	-5,582.1	5,819.5	0.00	0.00	0.00
12,700.0	90.00	270.34	7,028.9	-1,995.95	1,703.2	-5,682.1	5,917.2	0.00	0.00	0.00
12,800.0	90.00	270.34	7,028.9	-1,995.95	1,703.8	-5,782.1	6,014.9	0.00	0.00	0.00
12,900.0	90.00	270.34	7,029.0	-1,995.95	1,704.4	-5,882.1	6,112.6	0.00	0.00	0.00
13,000.0	90.00	270.34	7,029.0	-1,995.95	1,705.0	-5,982.1	6,210.3	0.00	0.00	0.00
13,100.0	90.00	270.34	7,029.0	-1,995.96	1,705.6	-6,082.1	6,308.0	0.00	0.00	0.00
13,200.0	90.00	270.34	7,029.0	-1,995.96	1,706.2	-6,182.1	6,405.7	0.00	0.00	0.00
13,300.0	90.00	270.34	7,029.0	-1,995.96	1,706.8	-6,282.1	6,503.4	0.00	0.00	0.00
13,400.0	90.00	270.34	7,029.0	-1,995.96	1,707.4	-6,382.1	6,601.1	0.00	0.00	0.00
13,500.0	90.00	270.34	7,029.0	-1,995.96	1,708.0	-6,482.1	6,698.8	0.00	0.00	0.00
13,600.0	90.00	270.34	7,029.0	-1,995.97	1,708.6	-6,582.1	6,796.5	0.00	0.00	0.00
13,700.0	90.00	270.34	7,029.0	-1,995.97	1,709.2	-6,682.1	6,894.2	0.00	0.00	0.00
13,800.0	90.00	270.34	7,029.0	-1,995.97	1,709.8	-6,782.1	6,991.9	0.00	0.00	0.00
13,900.0	90.00	270.34	7,029.0	-1,995.98	1,710.4	-6,882.1	7,089.6	0.00	0.00	0.00
14,000.0	90.00	270.34	7,029.0	-1,995.98	1,711.0	-6,982.1	7,187.3	0.00	0.00	0.00

Database:	EDM 5000.1 Single User Db	Local Co-ordinate Reference:	Well JOHNSONS CORNER 3
Company:	EXTRACTION OIL & GAS	TVD Reference:	KB @ 5033.0usft (Original Well Elev)
Project:	WELD COUNTY, COLORADO (NAD 83)	MD Reference:	KB @ 5033.0usft (Original Well Elev)
Site:	SEC. 35 T5N R68W 6th P.M.	North Reference:	True
Well:	JOHNSONS CORNER 3	Survey Calculation Method:	Minimum Curvature
Wellbore:	ORIGINAL WELLBORE		
Design:	PROPOSAL #1		

Planned Survey

MD (usft)	Inc (°)	Azi (°)	TVD (usft)	SS (usft)	+N/-S (usft)	+E/-W (usft)	Vertical Section (usft)	Dogleg Rate (°/100usft)	Build Rate (°/100usft)	Turn Rate (°/100usft)
14,100.0	90.00	270.34	7,029.0	-1,995.98	1,711.6	-7,082.1	7,285.0	0.00	0.00	0.00
14,200.0	90.00	270.34	7,029.0	-1,995.98	1,712.2	-7,182.1	7,382.7	0.00	0.00	0.00
14,300.0	90.00	270.34	7,029.0	-1,995.99	1,712.8	-7,282.1	7,480.4	0.00	0.00	0.00
14,400.0	90.00	270.34	7,029.0	-1,995.99	1,713.4	-7,382.1	7,578.1	0.00	0.00	0.00
14,500.0	90.00	270.34	7,029.0	-1,995.99	1,714.0	-7,482.1	7,675.8	0.00	0.00	0.00
14,600.0	90.00	270.34	7,029.0	-1,996.00	1,714.6	-7,582.1	7,773.5	0.00	0.00	0.00
BHL - JOHNSONS CORNER 3										
14,655.6	90.00	270.34	7,029.0	-1,996.00	1,714.9	-7,637.7	7,827.8	0.00	0.00	0.00

Formations

MD (usft)	TVD (usft)	Name	Lithology	Dip (°)	Dip Direction (°)
3,474.7	3,360.0	PARKMAN		0.00	
4,257.8	4,087.0	SUSSEX		0.00	
4,678.0	4,477.0	SHANNON		0.00	
7,239.3	6,887.0	NIOBRARA		0.00	
7,651.5	7,029.0	NIO B TGT		0.00	

Plan Annotations

MD (usft)	TVD (usft)	Local Coordinates		Comment
		+N/-S (usft)	+E/-W (usft)	
1,150.0	1,150.0	0.0	0.0	START NUDGE (2°/100ft BUR)
2,241.6	2,215.4	205.3	-7.5	EOB TO 21.83° INC
5,630.0	5,360.7	1,464.6	-53.3	END OF TANGENT
6,721.6	6,426.1	1,669.9	-60.8	EOD TO VERTICAL
6,751.6	6,456.1	1,669.9	-60.8	KOP (10°/100ft BUR)
7,651.5	7,029.0	1,673.3	-633.7	7" ICP - JOHNSONS CORNER 3
14,655.6	7,029.0	1,714.9	-7,637.7	BHL - JOHNSONS CORNER 3