

EXTRACTION OIL & GAS

WELD COUNTY, COLORADO (NAD 83)

SEC. 35 T5N R68W 6th P.M.

JOHNSONS CORNER 2

ORIGINAL WELLBORE

14 August, 2014

Plan: PROPOSAL #1

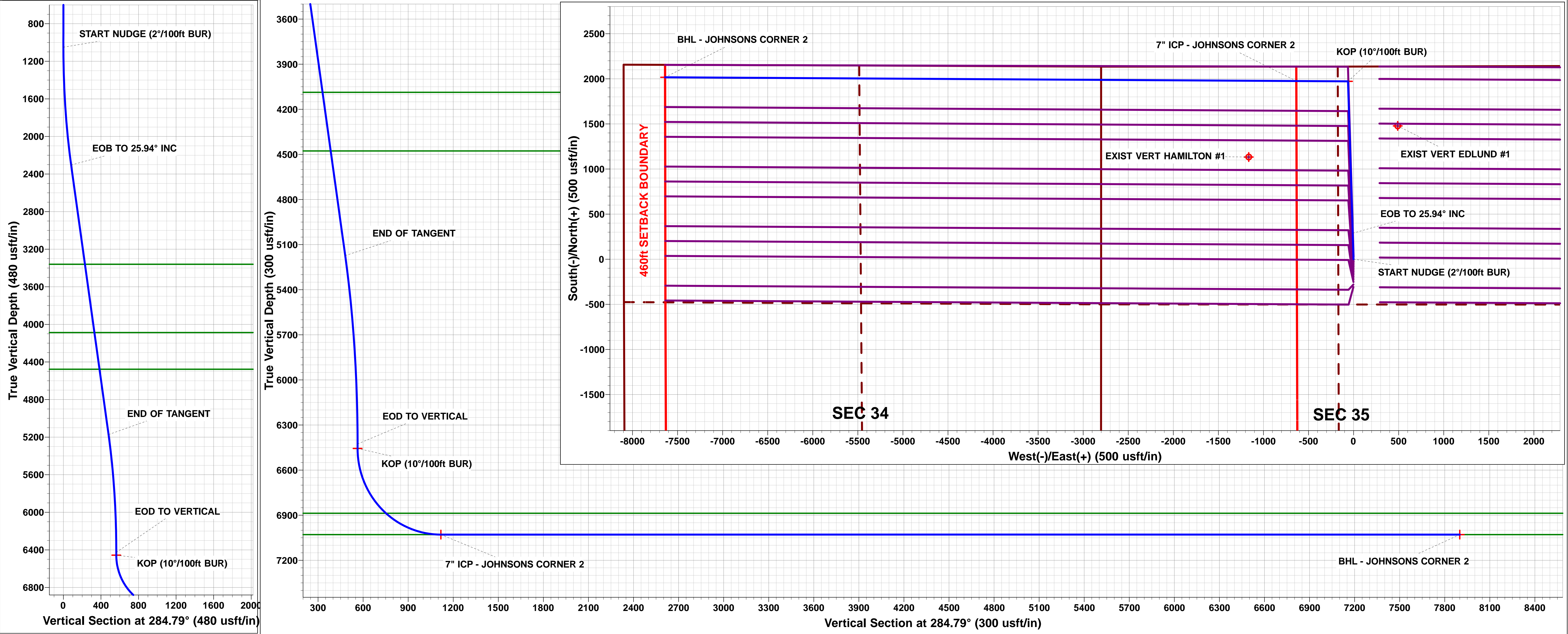
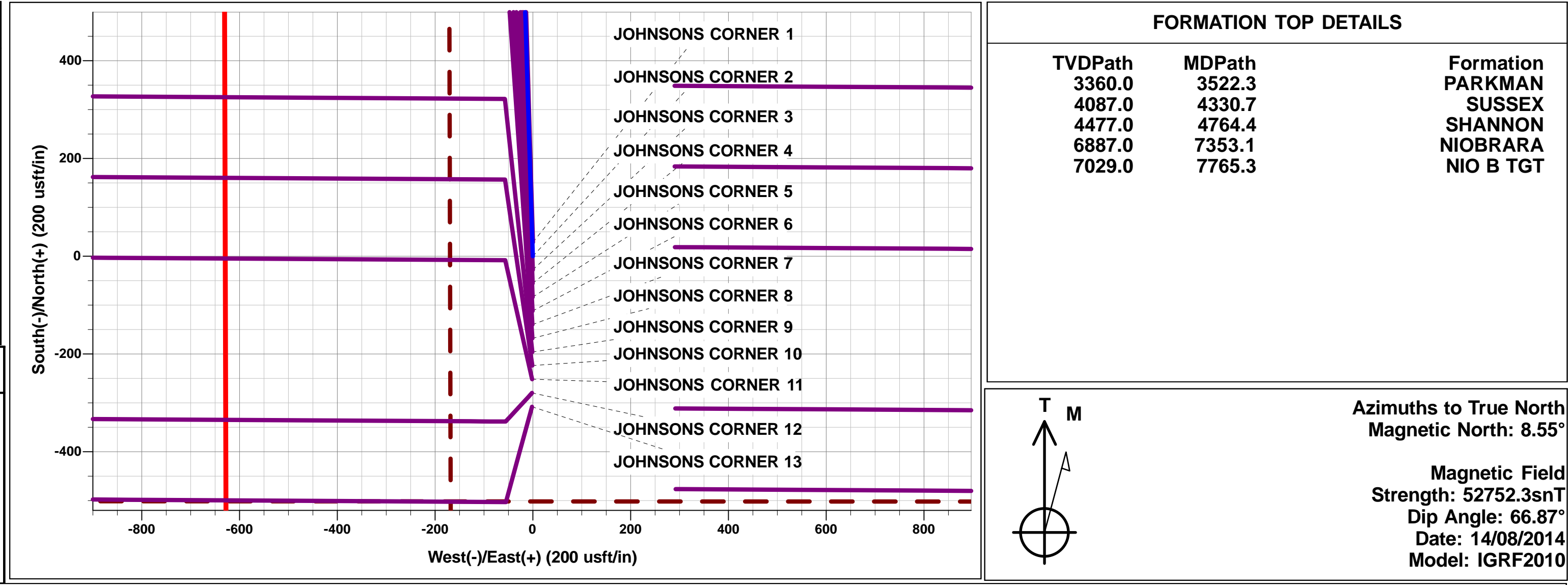




Project: WELD COUNTY, COLORADO (NAD 83)
Site: SEC. 35 T5N R68W 6th P.M.
Well: JOHNSONS CORNER 2
Wellbore: ORIGINAL WELLBORE
Design: PROPOSAL #1

ANNOTATIONS										
TVD	MD	Inc	Azi	+N/-S	+E/-W	VSect	Dep	Annotation		
1050.0	1050.0	0.00	0.00	0.0	0.0	0.0	0.0	START NUDDGE (2°/100ft BUR)		
2303.2	2347.0	25.94	358.21	288.5	-9.0	82.4	288.6	EOB TO 25.94° INC		
5172.9	5538.3	25.94	358.21	1683.8	-52.6	480.8	1684.6	END OF TANGENT		
6426.1	6835.3	0.00	0.00	1972.3	-61.6	563.2	1973.3	EOD TO VERTICAL		
6456.1	6865.3	0.00	0.00	1972.3	-61.6	563.2	1973.3	KOP (10°/100ft BUR)		
7029.0	7765.3	90.00	270.34	1975.7	-634.5	1118.0	2546.2	7" ICP - JOHNSONS CORNER 2		
7029.0	14769.0	90.00	270.34	2017.3	-7638.1	7900.0	9549.9	BHL - JOHNSONS CORNER 2		

WELLBORE TARGET DETAILS (LAT/LONG)					
Name	TVD	+N/-S	+E/-W	Latitude	Longitude
KOP - JOHNSONS CORNER 2	6456.1	1972.3	-61.6	40.363197	-104.973633
7" ICP - JOHNSONS CORNER 2	7029.0	1975.7	-634.5	40.363206	-104.975689
BHL - JOHNSONS CORNER 2	7029.0	2017.3	-7638.1	40.363317	-105.000821



Planning Report



Database:	EDM 5000.1 Single User Db	Local Co-ordinate Reference:	Well JOHNSONS CORNER 2
Company:	EXTRACTION OIL & GAS	TVD Reference:	KB-EST @ 5032.0usft (Original Well Elev)
Project:	WELD COUNTY, COLORADO (NAD 83)	MD Reference:	KB-EST @ 5032.0usft (Original Well Elev)
Site:	SEC. 35 T5N R68W 6th P.M.	North Reference:	True
Well:	JOHNSONS CORNER 2	Survey Calculation Method:	Minimum Curvature
Wellbore:	ORIGINAL WELLBORE		
Design:	PROPOSAL #1		

Project	WELD COUNTY, COLORADO (NAD 83)		
Map System:	US State Plane 1983	System Datum:	Mean Sea Level
Geo Datum:	North American Datum 1983		
Map Zone:	Colorado Northern Zone		Using geodetic scale factor

Site	SEC. 35 T5N R68W 6th P.M.		
Site Position:		Northing:	1,373,645.09 usft
From:	Lat/Long	Easting:	3,146,750.79 usft
Position Uncertainty:	0.0 usft	Slot Radius:	1.10000ft
		Latitude:	40.357861
		Longitude:	-104.973411
		Grid Convergence:	0.34 °

Well	JOHNSONS CORNER 2		
Well Position	+N-S	-28.4 usft	Northing:
	+E-W	-0.3 usft	Easting:
Position Uncertainty		0.0 usft	Wellhead Elevation:
			Latitude:
			Longitude:
			Ground Level:

Wellbore	ORIGINAL WELLBORE				
Magnetics	Model Name	Sample Date	Declination (°)	Dip Angle (°)	Field Strength (nT)
	IGRF2010	14/08/2014	8.55	66.87	52,752

Design	PROPOSAL #1			
Audit Notes:				
Version:	Phase:	PROTOTYPE	Tie On Depth:	0.0
Vertical Section:	Depth From (TVD) (usft)	+N-S (usft)	+E-W (usft)	Direction (°)
	7,029.0	0.0	0.0	284.79

Plan Sections											
MD (usft)	Inc (°)	Azi (°)	Vertical Depth	SS (usft)	+N-S (usft)	+E-W (usft)	Dogleg Rate (°/100usf)	Build Rate (°/100usf)	Turn Rate (°/100usf)	TFO (°)	Target
0.0	0.00	0.00	0.0	-5,032.0	0.0	0.0	0.00	0.00	0.00	0.00	
1,050.0	0.00	0.00	1,050.0	-3,982.0	0.0	0.0	0.00	0.00	0.00	0.00	
2,347.0	25.94	358.21	2,303.2	-2,728.8	288.5	-9.0	2.00	2.00	0.00	358.21	
5,538.3	25.94	358.21	5,172.9	140.9	1,683.8	-52.6	0.00	0.00	0.00	0.00	
6,835.3	0.00	0.00	6,426.1	1,394.1	1,972.3	-61.6	2.00	-2.00	0.00	180.00	
6,865.3	0.00	0.00	6,456.1	1,424.1	1,972.3	-61.6	0.00	0.00	0.00	0.00	KOP - JOHNSONS
7,765.3	90.00	270.34	7,029.0	1,997.0	1,975.7	-634.5	10.00	10.00	-9.96	270.34	7" ICP - JOHNSON
14,769.0	90.00	270.34	7,029.0	1,997.0	2,017.3	-7,638.1	0.00	0.00	0.00	140.13	BHL - JOHNSONS

Database:	EDM 5000.1 Single User Db	Local Co-ordinate Reference:	Well JOHNSONS CORNER 2
Company:	EXTRACTION OIL & GAS	TVD Reference:	KB-EST @ 5032.0usft (Original Well Elev)
Project:	WELD COUNTY, COLORADO (NAD 83)	MD Reference:	KB-EST @ 5032.0usft (Original Well Elev)
Site:	SEC. 35 T5N R68W 6th P.M.	North Reference:	True
Well:	JOHNSONS CORNER 2	Survey Calculation Method:	Minimum Curvature
Wellbore:	ORIGINAL WELLBORE		
Design:	PROPOSAL #1		

Planned Survey

MD (usft)	Inc (°)	Azi (°)	TVD (usft)	SS (usft)	+N/-S (usft)	+E/-W (usft)	Vertical Section (usft)	Dogleg Rate (°/100usft)	Build Rate (°/100usft)	Turn Rate (°/100usft)
0.0	0.00	0.00	0.0	5,032.00	0.0	0.0	0.0	0.00	0.00	0.00
100.0	0.00	0.00	100.0	4,932.00	0.0	0.0	0.0	0.00	0.00	0.00
200.0	0.00	0.00	200.0	4,832.00	0.0	0.0	0.0	0.00	0.00	0.00
300.0	0.00	0.00	300.0	4,732.00	0.0	0.0	0.0	0.00	0.00	0.00
400.0	0.00	0.00	400.0	4,632.00	0.0	0.0	0.0	0.00	0.00	0.00
500.0	0.00	0.00	500.0	4,532.00	0.0	0.0	0.0	0.00	0.00	0.00
600.0	0.00	0.00	600.0	4,432.00	0.0	0.0	0.0	0.00	0.00	0.00
700.0	0.00	0.00	700.0	4,332.00	0.0	0.0	0.0	0.00	0.00	0.00
800.0	0.00	0.00	800.0	4,232.00	0.0	0.0	0.0	0.00	0.00	0.00
900.0	0.00	0.00	900.0	4,132.00	0.0	0.0	0.0	0.00	0.00	0.00
1,000.0	0.00	0.00	1,000.0	4,032.00	0.0	0.0	0.0	0.00	0.00	0.00
START NUDGE (2°/100ft BUR)										
1,050.0	0.00	0.00	1,050.0	3,982.00	0.0	0.0	0.0	0.00	0.00	0.00
1,100.0	1.00	358.21	1,100.0	3,932.00	0.4	0.0	0.1	2.00	2.00	0.00
1,200.0	3.00	358.21	1,199.9	3,832.07	3.9	-0.1	1.1	2.00	2.00	0.00
1,300.0	5.00	358.21	1,299.7	3,732.32	10.9	-0.3	3.1	2.00	2.00	0.00
1,400.0	7.00	358.21	1,399.1	3,632.87	21.3	-0.7	6.1	2.00	2.00	0.00
1,500.0	9.00	358.21	1,498.2	3,533.85	35.3	-1.1	10.1	2.00	2.00	0.00
1,600.0	11.00	358.21	1,596.6	3,435.37	52.6	-1.6	15.0	2.00	2.00	0.00
1,700.0	13.00	358.21	1,694.4	3,337.56	73.4	-2.3	21.0	2.00	2.00	0.00
1,800.0	15.00	358.21	1,791.5	3,240.54	97.6	-3.0	27.9	2.00	2.00	0.00
1,900.0	17.00	358.21	1,887.6	3,144.42	125.1	-3.9	35.7	2.00	2.00	0.00
2,000.0	19.00	358.21	1,982.7	3,049.32	156.0	-4.9	44.5	2.00	2.00	0.00
2,100.0	21.00	358.21	2,076.6	2,955.35	190.2	-5.9	54.3	2.00	2.00	0.00
2,200.0	23.00	358.21	2,169.4	2,862.64	227.6	-7.1	65.0	2.00	2.00	0.00
2,300.0	25.00	358.21	2,260.7	2,771.29	268.3	-8.4	76.6	2.00	2.00	0.00
EOB TO 25.94° INC										
2,347.0	25.94	358.21	2,303.2	2,728.83	288.5	-9.0	82.4	2.00	2.00	0.00
2,400.0	25.94	358.21	2,350.8	2,681.20	311.7	-9.7	89.0	0.00	0.00	0.00
2,500.0	25.94	358.21	2,440.7	2,591.27	355.4	-11.1	101.5	0.00	0.00	0.00
2,600.0	25.94	358.21	2,530.7	2,501.35	399.1	-12.5	114.0	0.00	0.00	0.00
2,700.0	25.94	358.21	2,620.6	2,411.42	442.8	-13.8	126.4	0.00	0.00	0.00
2,800.0	25.94	358.21	2,710.5	2,321.50	486.5	-15.2	138.9	0.00	0.00	0.00
2,900.0	25.94	358.21	2,800.4	2,231.57	530.3	-16.6	151.4	0.00	0.00	0.00
3,000.0	25.94	358.21	2,890.4	2,141.65	574.0	-17.9	163.9	0.00	0.00	0.00
3,100.0	25.94	358.21	2,980.3	2,051.72	617.7	-19.3	176.4	0.00	0.00	0.00
3,200.0	25.94	358.21	3,070.2	1,961.80	661.4	-20.7	188.9	0.00	0.00	0.00
3,300.0	25.94	358.21	3,160.1	1,871.87	705.2	-22.0	201.4	0.00	0.00	0.00
3,400.0	25.94	358.21	3,250.1	1,781.95	748.9	-23.4	213.8	0.00	0.00	0.00
3,500.0	25.94	358.21	3,340.0	1,692.02	792.6	-24.8	226.3	0.00	0.00	0.00
PARKMAN										
3,522.3	25.94	358.21	3,360.0	1,672.00	802.3	-25.1	229.1	0.00	0.00	0.00
3,600.0	25.94	358.21	3,429.9	1,602.10	836.3	-26.1	238.8	0.00	0.00	0.00
3,700.0	25.94	358.21	3,519.8	1,512.17	880.0	-27.5	251.3	0.00	0.00	0.00
3,800.0	25.94	358.21	3,609.8	1,422.25	923.8	-28.9	263.8	0.00	0.00	0.00
3,900.0	25.94	358.21	3,699.7	1,332.32	967.5	-30.2	276.3	0.00	0.00	0.00
4,000.0	25.94	358.21	3,789.6	1,242.40	1,011.2	-31.6	288.7	0.00	0.00	0.00
4,100.0	25.94	358.21	3,879.5	1,152.47	1,054.9	-32.9	301.2	0.00	0.00	0.00
4,200.0	25.94	358.21	3,969.4	1,062.55	1,098.7	-34.3	313.7	0.00	0.00	0.00
4,300.0	25.94	358.21	4,059.4	972.63	1,142.4	-35.7	326.2	0.00	0.00	0.00
SUSSEX										
4,330.7	25.94	358.21	4,087.0	945.00	1,155.8	-36.1	330.0	0.00	0.00	0.00
4,400.0	25.94	358.21	4,149.3	882.70	1,186.1	-37.0	338.7	0.00	0.00	0.00
4,500.0	25.94	358.21	4,239.2	792.78	1,229.8	-38.4	351.2	0.00	0.00	0.00

Database:	EDM 5000.1 Single User Db	Local Co-ordinate Reference:	Well JOHNSONS CORNER 2
Company:	EXTRACTION OIL & GAS	TVD Reference:	KB-EST @ 5032.0usft (Original Well Elev)
Project:	WELD COUNTY, COLORADO (NAD 83)	MD Reference:	KB-EST @ 5032.0usft (Original Well Elev)
Site:	SEC. 35 T5N R68W 6th P.M.	North Reference:	True
Well:	JOHNSONS CORNER 2	Survey Calculation Method:	Minimum Curvature
Wellbore:	ORIGINAL WELLBORE		
Design:	PROPOSAL #1		

Planned Survey

MD (usft)	Inc (°)	Azi (°)	TVD (usft)	SS (usft)	+N/-S (usft)	+E/-W (usft)	Vertical Section (usft)	Dogleg Rate (°/100usft)	Build Rate (°/100usft)	Turn Rate (°/100usft)
4,600.0	25.94	358.21	4,329.1	702.85	1,273.6	-39.8	363.7	0.00	0.00	0.00
4,700.0	25.94	358.21	4,419.1	612.93	1,317.3	-41.1	376.1	0.00	0.00	0.00
SHANNON										
4,764.4	25.94	358.21	4,477.0	555.00	1,345.4	-42.0	384.2	0.00	0.00	0.00
4,800.0	25.94	358.21	4,509.0	523.00	1,361.0	-42.5	388.6	0.00	0.00	0.00
4,900.0	25.94	358.21	4,598.9	433.08	1,404.7	-43.9	401.1	0.00	0.00	0.00
5,000.0	25.94	358.21	4,688.8	343.15	1,448.4	-45.2	413.6	0.00	0.00	0.00
5,100.0	25.94	358.21	4,778.8	253.23	1,492.2	-46.6	426.1	0.00	0.00	0.00
5,200.0	25.94	358.21	4,868.7	163.30	1,535.9	-48.0	438.6	0.00	0.00	0.00
5,300.0	25.94	358.21	4,958.6	73.38	1,579.6	-49.3	451.1	0.00	0.00	0.00
5,400.0	25.94	358.21	5,048.5	-16.55	1,623.3	-50.7	463.5	0.00	0.00	0.00
5,500.0	25.94	358.21	5,138.5	-106.47	1,667.1	-52.1	476.0	0.00	0.00	0.00
END OF TANGENT										
5,538.3	25.94	358.21	5,172.9	-140.93	1,683.8	-52.6	480.8	0.00	0.00	0.00
5,600.0	24.71	358.21	5,228.7	-196.68	1,710.2	-53.4	488.3	2.00	-2.00	0.00
5,700.0	22.71	358.21	5,320.2	-288.24	1,750.4	-54.7	499.8	2.00	-2.00	0.00
5,800.0	20.71	358.21	5,413.1	-381.14	1,787.3	-55.8	510.4	2.00	-2.00	0.00
5,900.0	18.71	358.21	5,507.3	-475.28	1,821.0	-56.9	520.0	2.00	-2.00	0.00
6,000.0	16.71	358.21	5,602.5	-570.54	1,851.4	-57.8	528.7	2.00	-2.00	0.00
6,100.0	14.71	358.21	5,698.8	-666.80	1,878.5	-58.7	536.4	2.00	-2.00	0.00
6,200.0	12.71	358.21	5,795.9	-763.95	1,902.2	-59.4	543.2	2.00	-2.00	0.00
6,300.0	10.71	358.21	5,893.9	-861.86	1,922.4	-60.0	549.0	2.00	-2.00	0.00
6,400.0	8.71	358.21	5,992.4	-960.43	1,939.3	-60.6	553.8	2.00	-2.00	0.00
6,500.0	6.71	358.21	6,091.5	-1,059.52	1,952.7	-61.0	557.6	2.00	-2.00	0.00
6,600.0	4.71	358.21	6,191.0	-1,159.02	1,962.6	-61.3	560.4	2.00	-2.00	0.00
6,700.0	2.71	358.21	6,290.8	-1,258.80	1,969.1	-61.5	562.3	2.00	-2.00	0.00
6,800.0	0.71	358.21	6,390.8	-1,358.75	1,972.1	-61.6	563.1	2.00	-2.00	0.00
EOD TO VERTICAL										
6,835.3	0.00	0.00	6,426.1	-1,394.10	1,972.3	-61.6	563.2	2.00	-2.00	0.00
KOP (10°/100ft BUR)										
6,865.3	0.00	0.00	6,456.1	-1,424.10	1,972.3	-61.6	563.2	0.00	0.00	0.00
6,900.0	3.47	270.34	6,490.7	-1,458.73	1,972.3	-62.6	564.2	10.00	10.00	0.00
7,000.0	13.47	270.34	6,589.5	-1,557.52	1,972.4	-77.4	578.4	10.00	10.00	0.00
7,100.0	23.47	270.34	6,684.2	-1,652.25	1,972.6	-109.0	609.1	10.00	10.00	0.00
7,200.0	33.47	270.34	6,772.0	-1,740.04	1,972.9	-156.6	655.2	10.00	10.00	0.00
7,300.0	43.47	270.34	6,850.2	-1,818.24	1,973.2	-218.7	715.3	10.00	10.00	0.00
NIOBRARA										
7,353.1	48.78	270.34	6,887.0	-1,855.00	1,973.4	-257.0	752.4	10.00	10.00	0.00
7,400.0	53.47	270.34	6,916.5	-1,884.45	1,973.7	-293.5	787.7	10.00	10.00	0.00
7,500.0	63.47	270.34	6,968.7	-1,936.68	1,974.2	-378.6	870.2	10.00	10.00	0.00
7,600.0	73.47	270.34	7,005.3	-1,973.33	1,974.7	-471.5	960.1	10.00	10.00	0.00
7,700.0	83.47	270.34	7,025.3	-1,993.29	1,975.3	-569.4	1,054.9	10.00	10.00	0.00
7" ICP - JOHNSONS CORNER 2 - NIO B TGT										
7,765.3	90.00	270.34	7,029.0	-1,997.00	1,975.7	-634.5	1,118.0	10.00	10.00	0.00
7,800.0	90.00	270.34	7,029.0	-1,997.00	1,975.9	-669.2	1,151.6	0.00	0.00	0.00
7,900.0	90.00	270.34	7,029.0	-1,996.99	1,976.5	-769.2	1,248.4	0.00	0.00	0.00
8,000.0	90.00	270.34	7,029.0	-1,996.98	1,977.0	-869.2	1,345.3	0.00	0.00	0.00
8,100.0	90.00	270.34	7,029.0	-1,996.97	1,977.6	-969.2	1,442.1	0.00	0.00	0.00
8,200.0	90.00	270.34	7,029.0	-1,996.97	1,978.2	-1,069.2	1,538.9	0.00	0.00	0.00
8,300.0	90.00	270.34	7,029.0	-1,996.96	1,978.8	-1,169.2	1,635.8	0.00	0.00	0.00
8,400.0	90.00	270.34	7,029.0	-1,996.95	1,979.4	-1,269.2	1,732.6	0.00	0.00	0.00
8,500.0	90.00	270.34	7,028.9	-1,996.94	1,980.0	-1,369.2	1,829.4	0.00	0.00	0.00
8,600.0	90.00	270.34	7,028.9	-1,996.94	1,980.6	-1,469.2	1,926.3	0.00	0.00	0.00

Planning Report



Database:	EDM 5000.1 Single User Db	Local Co-ordinate Reference:	Well JOHNSONS CORNER 2
Company:	EXTRACTION OIL & GAS	TVD Reference:	KB-EST @ 5032.0usft (Original Well Elev)
Project:	WELD COUNTY, COLORADO (NAD 83)	MD Reference:	KB-EST @ 5032.0usft (Original Well Elev)
Site:	SEC. 35 T5N R68W 6th P.M.	North Reference:	True
Well:	JOHNSONS CORNER 2	Survey Calculation Method:	Minimum Curvature
Wellbore:	ORIGINAL WELLBORE		
Design:	PROPOSAL #1		

Planned Survey										
MD (usft)	Inc (°)	Azi (°)	TVD (usft)	SS (usft)	+N/-S (usft)	+E/-W (usft)	Vertical Section (usft)	Dogleg Rate (°/100usft)	Build Rate (°/100usft)	Turn Rate (°/100usft)
8,700.0	90.00	270.34	7,028.9	-1,996.93	1,981.2	-1,569.2	2,023.1	0.00	0.00	0.00
8,800.0	90.00	270.34	7,028.9	-1,996.93	1,981.7	-1,669.2	2,119.9	0.00	0.00	0.00
8,900.0	90.00	270.34	7,028.9	-1,996.92	1,982.3	-1,769.2	2,216.8	0.00	0.00	0.00
9,000.0	90.00	270.34	7,028.9	-1,996.91	1,982.9	-1,869.2	2,313.6	0.00	0.00	0.00
9,100.0	90.00	270.34	7,028.9	-1,996.91	1,983.5	-1,969.2	2,410.4	0.00	0.00	0.00
9,200.0	90.00	270.34	7,028.9	-1,996.90	1,984.1	-2,069.2	2,507.3	0.00	0.00	0.00
9,300.0	90.00	270.34	7,028.9	-1,996.90	1,984.7	-2,169.2	2,604.1	0.00	0.00	0.00
9,400.0	90.00	270.34	7,028.9	-1,996.89	1,985.3	-2,269.2	2,700.9	0.00	0.00	0.00
9,500.0	90.00	270.34	7,028.9	-1,996.89	1,985.9	-2,369.2	2,797.8	0.00	0.00	0.00
9,600.0	90.00	270.34	7,028.9	-1,996.89	1,986.5	-2,469.2	2,894.6	0.00	0.00	0.00
9,700.0	90.00	270.34	7,028.9	-1,996.88	1,987.1	-2,569.2	2,991.4	0.00	0.00	0.00
9,800.0	90.00	270.34	7,028.9	-1,996.88	1,987.7	-2,669.2	3,088.3	0.00	0.00	0.00
9,900.0	90.00	270.34	7,028.9	-1,996.87	1,988.2	-2,769.2	3,185.1	0.00	0.00	0.00
10,000.0	90.00	270.34	7,028.9	-1,996.87	1,988.8	-2,869.2	3,281.9	0.00	0.00	0.00
10,100.0	90.00	270.34	7,028.9	-1,996.87	1,989.4	-2,969.2	3,378.8	0.00	0.00	0.00
10,200.0	90.00	270.34	7,028.9	-1,996.87	1,990.0	-3,069.2	3,475.6	0.00	0.00	0.00
10,300.0	90.00	270.34	7,028.9	-1,996.86	1,990.6	-3,169.2	3,572.4	0.00	0.00	0.00
10,400.0	90.00	270.34	7,028.9	-1,996.86	1,991.2	-3,269.2	3,669.3	0.00	0.00	0.00
10,500.0	90.00	270.34	7,028.9	-1,996.86	1,991.8	-3,369.2	3,766.1	0.00	0.00	0.00
10,600.0	90.00	270.34	7,028.9	-1,996.86	1,992.4	-3,469.2	3,862.9	0.00	0.00	0.00
10,700.0	90.00	270.34	7,028.9	-1,996.86	1,993.0	-3,569.2	3,959.8	0.00	0.00	0.00
10,800.0	90.00	270.34	7,028.9	-1,996.85	1,993.6	-3,669.2	4,056.6	0.00	0.00	0.00
10,900.0	90.00	270.34	7,028.9	-1,996.85	1,994.2	-3,769.2	4,153.4	0.00	0.00	0.00
11,000.0	90.00	270.34	7,028.9	-1,996.85	1,994.8	-3,869.2	4,250.3	0.00	0.00	0.00
11,100.0	90.00	270.34	7,028.9	-1,996.85	1,995.4	-3,969.2	4,347.1	0.00	0.00	0.00
11,200.0	90.00	270.34	7,028.9	-1,996.85	1,995.9	-4,069.2	4,443.9	0.00	0.00	0.00
11,300.0	90.00	270.34	7,028.9	-1,996.85	1,996.5	-4,169.2	4,540.8	0.00	0.00	0.00
11,400.0	90.00	270.34	7,028.9	-1,996.85	1,997.1	-4,269.2	4,637.6	0.00	0.00	0.00
11,500.0	90.00	270.34	7,028.9	-1,996.85	1,997.7	-4,369.2	4,734.4	0.00	0.00	0.00
11,600.0	90.00	270.34	7,028.9	-1,996.85	1,998.3	-4,469.2	4,831.3	0.00	0.00	0.00
11,700.0	90.00	270.34	7,028.9	-1,996.85	1,998.9	-4,569.2	4,928.1	0.00	0.00	0.00
11,800.0	90.00	270.34	7,028.9	-1,996.86	1,999.5	-4,669.2	5,024.9	0.00	0.00	0.00
11,900.0	90.00	270.34	7,028.9	-1,996.86	2,000.1	-4,769.2	5,121.8	0.00	0.00	0.00
12,000.0	90.00	270.34	7,028.9	-1,996.86	2,000.7	-4,869.2	5,218.6	0.00	0.00	0.00
12,100.0	90.00	270.34	7,028.9	-1,996.86	2,001.3	-4,969.2	5,315.5	0.00	0.00	0.00
12,200.0	90.00	270.34	7,028.9	-1,996.86	2,001.9	-5,069.2	5,412.3	0.00	0.00	0.00
12,300.0	90.00	270.34	7,028.9	-1,996.86	2,002.5	-5,169.2	5,509.1	0.00	0.00	0.00
12,400.0	90.00	270.34	7,028.9	-1,996.87	2,003.1	-5,269.2	5,606.0	0.00	0.00	0.00
12,500.0	90.00	270.34	7,028.9	-1,996.87	2,003.7	-5,369.2	5,702.8	0.00	0.00	0.00
12,600.0	90.00	270.34	7,028.9	-1,996.87	2,004.3	-5,469.1	5,799.6	0.00	0.00	0.00
12,700.0	90.00	270.34	7,028.9	-1,996.88	2,004.9	-5,569.1	5,896.5	0.00	0.00	0.00
12,800.0	90.00	270.34	7,028.9	-1,996.88	2,005.5	-5,669.1	5,993.3	0.00	0.00	0.00
12,900.0	90.00	270.34	7,028.9	-1,996.88	2,006.1	-5,769.1	6,090.1	0.00	0.00	0.00
13,000.0	90.00	270.34	7,028.9	-1,996.89	2,006.7	-5,869.1	6,187.0	0.00	0.00	0.00
13,100.0	90.00	270.34	7,028.9	-1,996.89	2,007.3	-5,969.1	6,283.8	0.00	0.00	0.00
13,200.0	90.00	270.34	7,028.9	-1,996.90	2,007.9	-6,069.1	6,380.6	0.00	0.00	0.00
13,300.0	90.00	270.34	7,028.9	-1,996.90	2,008.5	-6,169.1	6,477.5	0.00	0.00	0.00
13,400.0	90.00	270.34	7,028.9	-1,996.91	2,009.1	-6,269.1	6,574.3	0.00	0.00	0.00
13,500.0	90.00	270.34	7,028.9	-1,996.91	2,009.7	-6,369.1	6,671.2	0.00	0.00	0.00
13,600.0	90.00	270.34	7,028.9	-1,996.92	2,010.3	-6,469.1	6,768.0	0.00	0.00	0.00
13,700.0	90.00	270.34	7,028.9	-1,996.92	2,010.9	-6,569.1	6,864.8	0.00	0.00	0.00
13,800.0	90.00	270.34	7,028.9	-1,996.93	2,011.5	-6,669.1	6,961.7	0.00	0.00	0.00
13,900.0	90.00	270.34	7,028.9	-1,996.94	2,012.1	-6,769.1	7,058.5	0.00	0.00	0.00
14,000.0	90.00	270.34	7,028.9	-1,996.94	2,012.7	-6,869.1	7,155.3	0.00	0.00	0.00

Planning Report



Database:	EDM 5000.1 Single User Db	Local Co-ordinate Reference:	Well JOHNSONS CORNER 2
Company:	EXTRACTION OIL & GAS	TVD Reference:	KB-EST @ 5032.0usft (Original Well Elev)
Project:	WELD COUNTY, COLORADO (NAD 83)	MD Reference:	KB-EST @ 5032.0usft (Original Well Elev)
Site:	SEC. 35 T5N R68W 6th P.M.	North Reference:	True
Well:	JOHNSONS CORNER 2	Survey Calculation Method:	Minimum Curvature
Wellbore:	ORIGINAL WELLBORE		
Design:	PROPOSAL #1		

Planned Survey										
MD (usft)	Inc (°)	Azi (°)	TVD (usft)	SS (usft)	+N/-S (usft)	+E/-W (usft)	Vertical Section (usft)	Dogleg Rate (°/100usft)	Build Rate (°/100usft)	Turn Rate (°/100usft)
14,100.0	90.00	270.34	7,028.9	-1,996.95	2,013.3	-6,969.1	7,252.2	0.00	0.00	0.00
14,200.0	90.00	270.34	7,029.0	-1,996.96	2,013.9	-7,069.1	7,349.0	0.00	0.00	0.00
14,300.0	90.00	270.34	7,029.0	-1,996.96	2,014.5	-7,169.1	7,445.8	0.00	0.00	0.00
14,400.0	90.00	270.34	7,029.0	-1,996.97	2,015.1	-7,269.1	7,542.7	0.00	0.00	0.00
14,500.0	90.00	270.34	7,029.0	-1,996.98	2,015.7	-7,369.1	7,639.5	0.00	0.00	0.00
14,600.0	90.00	270.34	7,029.0	-1,996.99	2,016.3	-7,469.1	7,736.4	0.00	0.00	0.00
14,700.0	90.00	270.34	7,029.0	-1,996.99	2,016.9	-7,569.1	7,833.2	0.00	0.00	0.00
BHL - JOHNSONS CORNER 2										
14,769.0	90.00	270.34	7,029.0	-1,997.00	2,017.3	-7,638.1	7,900.0	0.00	0.00	0.00

Formations						
MD (usft)	TVD (usft)	Name	Lithology	Dip (°)	Dip Direction (°)	
3,522.3	3,360.0	PARKMAN		0.00		
4,330.7	4,087.0	SUSSEX		0.00		
4,764.4	4,477.0	SHANNON		0.00		
7,353.1	6,887.0	NIOBRARA		0.00		
7,765.3	7,029.0	NIO B TGT		0.00		

Plan Annotations				
MD (usft)	TVD (usft)	Local Coordinates		Comment
		+N/-S (usft)	+E/-W (usft)	
1,050.0	1,050.0	0.0	0.0	START NUDGE (2°/100ft BUR)
2,347.0	2,303.2	288.5	-9.0	EOB TO 25.94° INC
5,538.3	5,172.9	1,683.8	-52.6	END OF TANGENT
6,835.3	6,426.1	1,972.3	-61.6	EOD TO VERTICAL
6,865.3	6,456.1	1,972.3	-61.6	KOP (10°/100ft BUR)
7,765.3	7,029.0	1,975.7	-634.5	7" ICP - JOHNSONS CORNER 2
14,769.0	7,029.0	2,017.3	-7,638.1	BHL - JOHNSONS CORNER 2