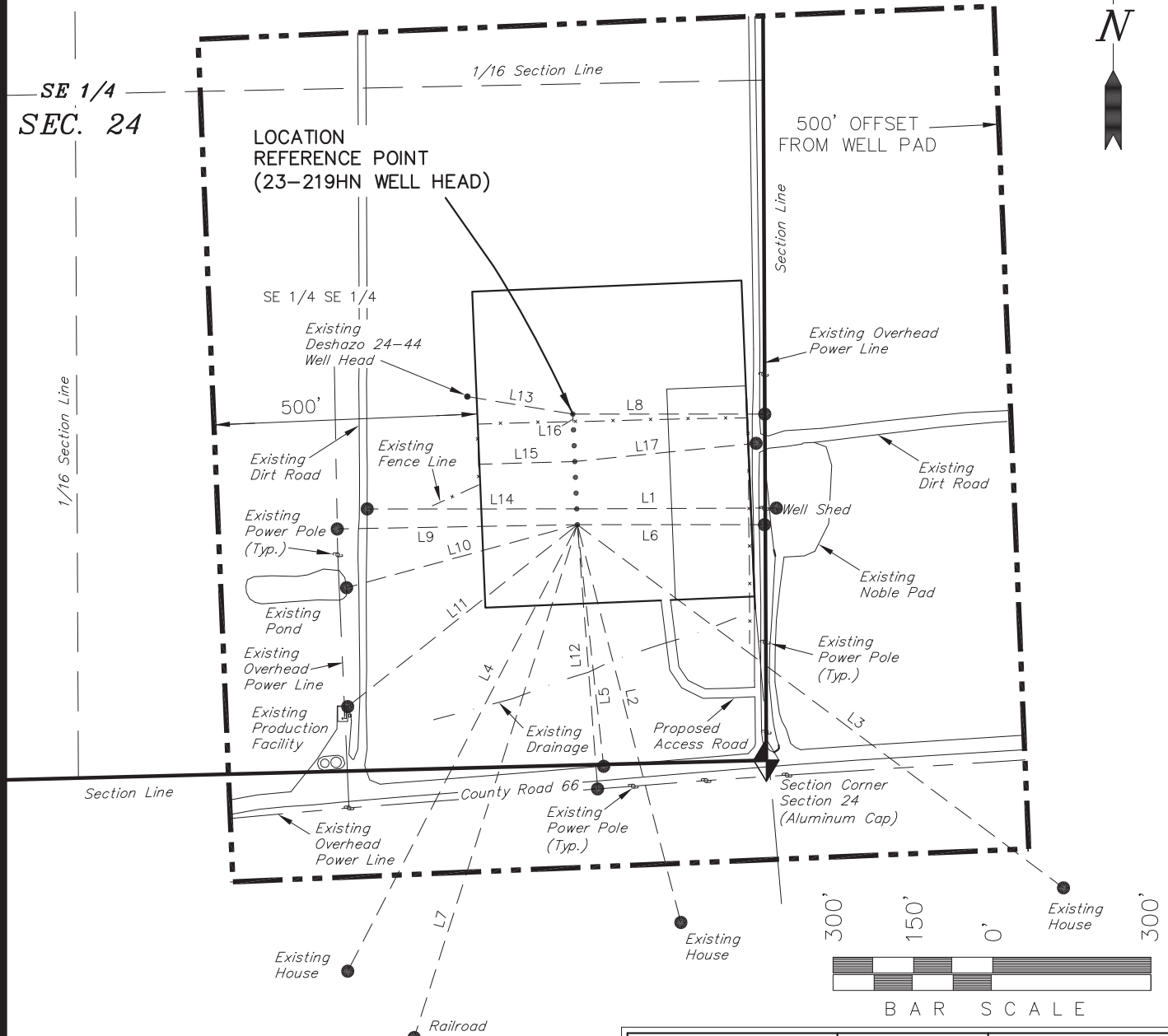


# GREAT WESTERN OIL & GAS COMPANY

## LOCATION DRAWING ADDENDUM TO LEGAL PLAT

BURR FD 23-219HN, 222HN, 259HC,  
299HN, 339HN, 339HC, 279HN, 382HN

Pad Location: SESE Section 24, T6N, R67W, 6th P.M.



Feature	Line Number	Bearing
Building (Well Shed)	L1	N90°E 379'
Building Unit (House)	L2	S15°E 780'
Building Unit (House)	L3	S53°E 1151'
Building Unit (House)	L4	S27°W 952'
Public Road	L5	S06°E 461'
Above Ground Utility	L6	N90°E 355'
Railroad	L7	S15°W 1352'
Property Line.	L8	N90°E 364'

Feature	Line Number	Bearing
Above Ground Utility	L9	S89°W 456'
Pond	L10	S75°W 454'
Production Facility	L11	S75°W 454'
Above Ground Utility	L12	S04°E 503'
Existing Well Head	L13	N81°W 203'
Dirt Road	L14	S90°W 398'
Fence Line	L15	S88°W 183'
Fence Line	L16	S01°E 14'
Dirt Road	L17	N84°E 346'

SURVEYED BY: C.S.      DATE SURVEYED: 03-24-14  
 DRAWN BY: M.W.      DATE DRAWN: 07-22-14  
 SCALE: 1" = 300'      REVISED: M.W. 12-12-14

**Tri State** (435) 781-2501  
 Land Surveying, Inc.  
 180 NORTH VERNAL AVE. VERNAL, UTAH 84078

SHEET  
2a