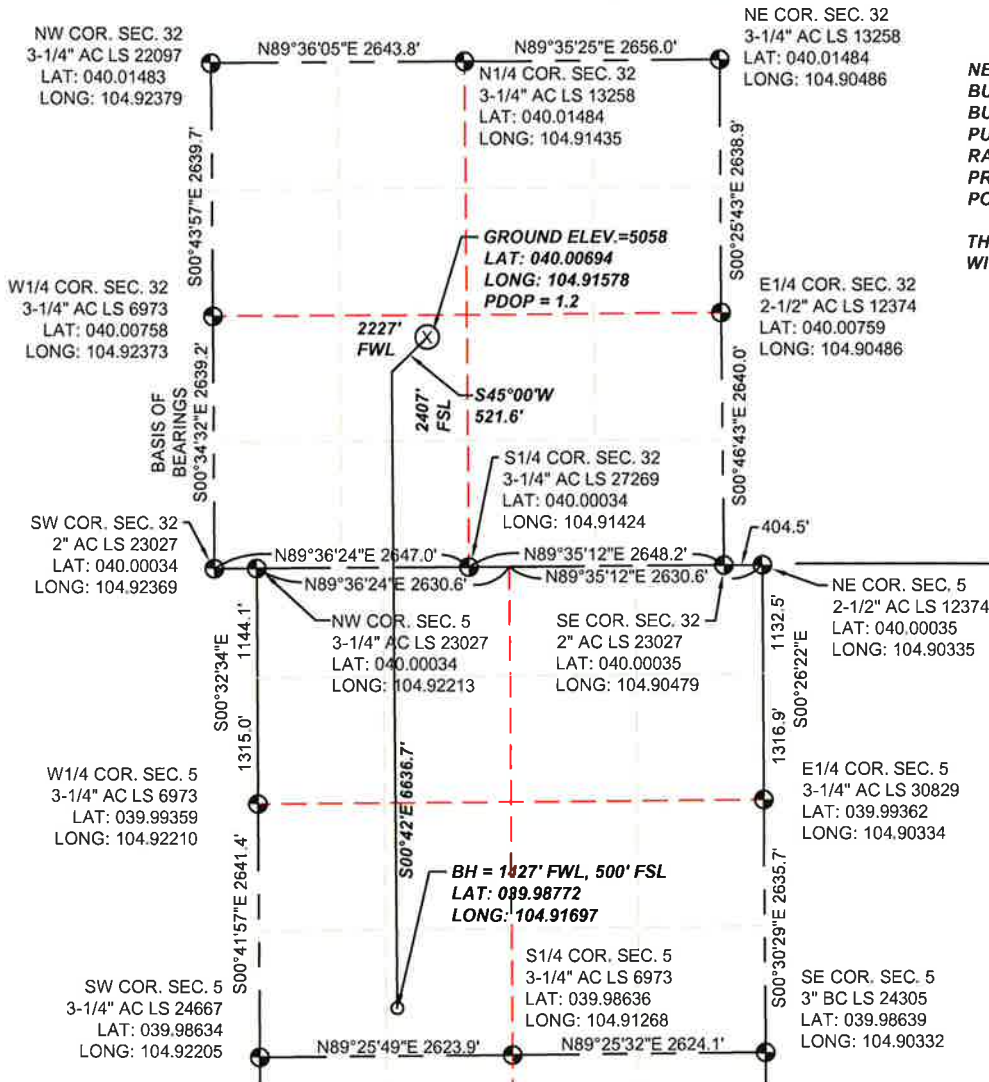


WELL LOCATION CERTIFICATE

SECTION 32, TOWNSHIP 1 NORTH & SECTION 5, TOWNSHIP 1 SOUTH,
RANGE 67 WEST, 6TH P.M.



NEAREST VISIBLE ITEMS
 BUILDING - +/-1818' E
 BUILDING UNIT - 1810' E
 PUBLIC ROAD - +/-2212' W
 RAILROAD - +/- 1.4 MILES W
 PROPERTY LINE - 237' N
 POWER LINE - +/- 2264' W

THERE ARE NO HOBU OR DOAA
 WITHIN A MILE OF THE WELL HEAD.

WELD COUNTY

TOWNSHIP 1 NORTH,
 RANGE 67 WEST

TOWNSHIP 1 SOUTH,
 RANGE 67 WEST

ADAMS COUNTY

LEGEND

- FOUND SECTION
- CORNER MONUMENT
- ⊗ PROPOSED WELL
- BOTTOM HOLE

I HEREBY STATE TO PDC ENERGY THAT THE SURFACE LOCATION FOR THE
 PROPOSED WELL JACOBUCCI 320-443 IS LOCATED 2407' FSL AND 2227' FWL,
 SEC. 32, T1N, R67W, 6TH P.M.



SCALE: 1"=2000'

NOTES:

1. THIS IS A HORIZONTAL DRILL WELL. BOTTOM HOLE AT 1427' FWL, 500' FSL.
2. SEE LOCATION DRAWING FOR IMPROVEMENTS.
3. ELEVATION SOURCE: USGS QUAD MAP CONTOURS, 7.5 MINUTE SERIES, NGVD 1929 DATUM.
4. SECTION DIMENSIONS SHOWN ARE FIELD MEASURED. EXTERIOR SECTION LINES ARE DRAWN TO SCALE. DISTANCES TO WELL LOCATION ARE PERPENDICULAR TO SECTION LINES.
5. THIS IS NOT A MONUMENTED BOUNDARY. THIS EXHIBIT IS INTENDED ONLY TO DEPICT THE PROPOSED WELL LOCATION TO SECTION LINES.



THOMAS G. CARLSON, PLS 24657
 SAM, LLC



555 Zang St., Suite 210
 Lakewood CO. 80228
 Ph: (303) 988-5852
 Fax: (303) 988-2195
 EMAIL: SAM@SAM.BIZ

WELL NAME:

JACOBUCCI 320-443

LOCATION:

SURFACE: SEC. 32, T1N, R67W, 6TH P.M.
 WELD COUNTY, COLORADO;
 BOTTOM HOLE: SEC. 5, T1S, R67W, 6TH P.M.
 ADAMS COUNTY, COLORADO

DRAWN BY:
 TWK

CHECKED BY:
 T. CARLSON

SHEET No.
 1 OF 1

FIELD DATE
 06/11/2014

EXHIBIT DATE
 07/23/2014

SCALE:
 1"=2000'

PROJ. No.
 34481

Dwg. No.
 JACOBUCCI.dwg