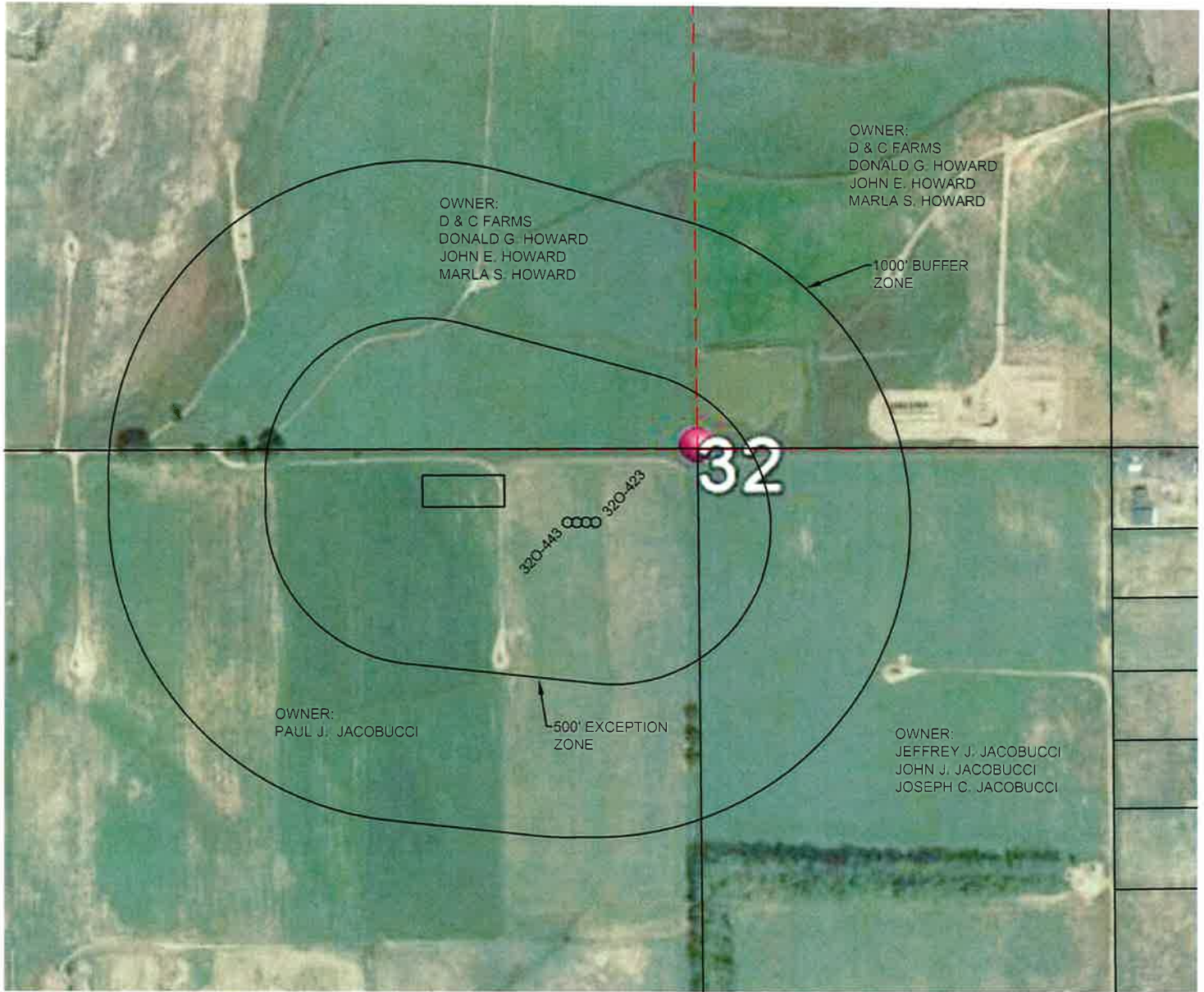


NOTIFICATION ZONE DRAWING

SECTION 32, TOWNSHIP 1 NORTH, RANGE 67 WEST, 6TH P.M.

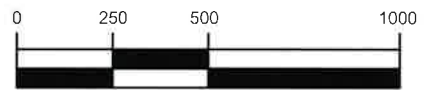


LEGEND

- ⊕ FOUND SECTION CORNER MONUMENT
- PROPOSED WELL

NOTES:

1. 1000 FOOT NOTIFICATION ZONE SHOWN FROM THE END WELL LOCATION AND PROPOSED PRODUCTION FACILITIES PAD.
2. NO BUILDINGS ARE LOCATED WITHIN THE NOTIFICATION ZONE.



SCALE: 1"=500'



SURVEYING AND MAPPING LLC (SAM)
555 Zang St., Suite 210
Lakewood CO 80228
Ph: (303) 988-5852
Fax: (303) 988-2195
EMAIL: SAM@SAM.BIZ

PAD NAME: JACOBUCCI 1N67W320

LOCATION:

SECTION 32, T1N, R67W, 6TH P.M.
WELD COUNTY, COLORADO

| | | | |
|----------------------------|-------------------|--------------------|---------------------------|
| EXHIBIT DATE 07/23/2014 | SCALE: 1"=500' | PROJ. No. 34481 | Dwg. No. JACOBUCCI.dwg |
|----------------------------|-------------------|--------------------|---------------------------|

| | | |
|------------------|---------------------------|---------------------|
| DRAWN BY: TWK | CHECKED BY: T. CARLSON | SHEET No. 1 OF 1 |
|------------------|---------------------------|---------------------|