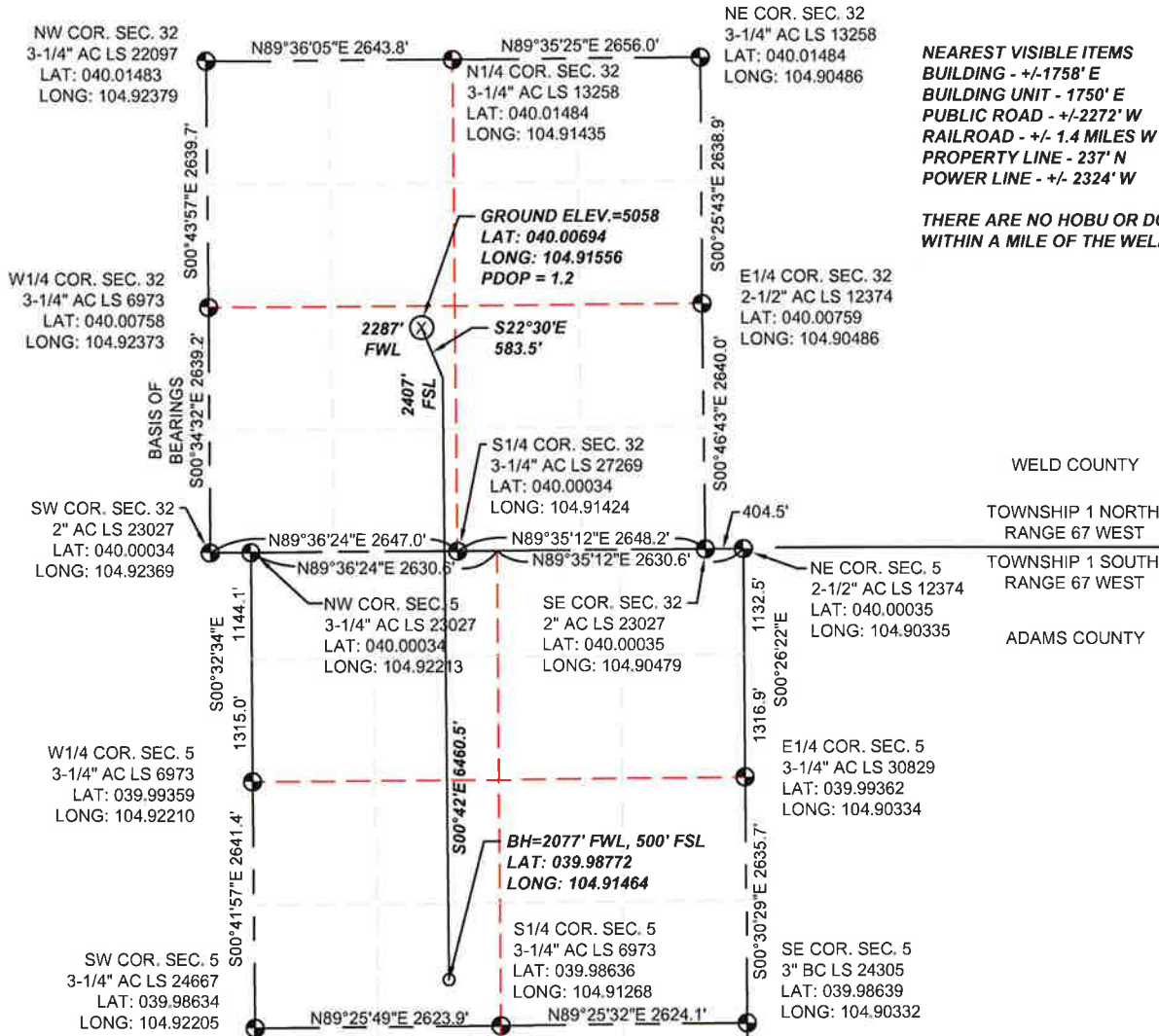


WELL LOCATION CERTIFICATE

SECTION 32, TOWNSHIP 1 NORTH & SECTION 5, TOWNSHIP 1 SOUTH,
RANGE 67 WEST, 6TH P.M.



LEGEND

- FOUND SECTION CORNER MONUMENT
- ⊗ PROPOSED WELL
- BOTTOM HOLE

I HEREBY STATE TO PDC ENERGY THAT THE SURFACE LOCATION FOR THE PROPOSED WELL JACOBUCCI 320-303 IS LOCATED 2407' FSL AND 2287' FWL, SEC. 32, T1N, R67W, 6TH P.M.



SCALE: 1"=2000'

NOTES:

1. THIS IS A HORIZONTAL DRILL WELL. BOTTOM HOLE AT 2077' FWL, 500' FSL.
2. SEE LOCATION DRAWING FOR IMPROVEMENTS.
3. ELEVATION SOURCE: USGS QUAD MAP CONTOURS, 7.5 MINUTE SERIES, NGVD 1929 DATUM.
4. SECTION DIMENSIONS SHOWN ARE FIELD MEASURED. EXTERIOR SECTION LINES ARE DRAWN TO SCALE. DISTANCES TO WELL LOCATION ARE PERPENDICULAR TO SECTION LINES.
5. THIS IS NOT A MONUMENTED BOUNDARY. THIS EXHIBIT IS INTENDED ONLY TO DEPICT THE PROPOSED WELL LOCATION TO SECTION LINES.



THOMAS G. CARLSON, PLS 24657
SAM, LLC

FIELD DATE
06/11/2014

EXHIBIT DATE
07/23/2014

SCALE:
1"=2000'

PROJ. No.
34481

Dwg. No.
JACOBUCCI.dwg



SURVEYING AND MAPPING LLC (SAM)
 555 Zang St., Suite 210
 Lakewood CO. 80228
 Ph: (303) 988-5852
 Fax: (303) 988-2195
 EMAIL: SAM@SAMBIZ

WELL NAME:

JACOBUCCI 320-303

LOCATION:

SURFACE: SEC. 32, T1N, R67W, 6TH P.M.
 WELD COUNTY, COLORADO;
 BOTTOM HOLE: SEC. 5, T1S, R67W, 6TH P.M.
 ADAMS COUNTY, COLORADO

DRAWN BY:
TWK

CHECKED BY:
T. CARLSON

SHEET No.
1 OF 1