



**Bill Barrett Corporation**

## COMPANY DETAILS: BILL BARRETT CORP

Calculation Method: Minimum Curvature  
Error System: ISCWSA  
Scan Method: Closest Approach 3D  
Error Surface: Elliptical Conic  
Warning Method: Error Ratio

## REFERENCE INFORMATION

Co-ordinate (N/E) Reference: Well Anschutz State 5-62-35-4956BH2, True North  
Vertical (TVD) Reference: KB @ 4602.0ft (Original Well Elev)  
Section (VS) Reference: Slot - (0.0N, 0.0E)  
Measured Depth Reference: KB @ 4602.0ft (Original Well Elev)  
Calculation Method: Minimum Curvature

## WELL DETAILS: Anschutz State 5-62-35-4956BH2

+N/-S	+E/-W	Northing	Easting	Latitude	Longitude
0.0	0.0	1373810.25	3334855.84	40° 21' 11.819 N	104° 17' 54.532 W

## SECTION DETAILS

Sec	MD	Inc	Azi	TVD	+N/-S	+E/-W	DLeg	TFace	VSec	Target
1	0.0	0.00	0.00	0.0	0.0	0.0	0.00	0.00	0.0	
2	800.0	0.00	0.00	800.0	0.0	0.0	0.00	0.00	0.0	
3	1191.2	7.82	227.51	1190.0	-18.0	-19.7	2.00	227.51	-19.3	
4	5083.0	7.82	227.51	5045.5	-375.8	-410.4	0.00	0.00	-402.1	
5	5474.2	0.00	88.99	5435.5	-393.9	-430.0	2.00	180.00	-421.4	
6	5724.2	0.00	88.99	5685.5	-393.9	-430.0	0.00	88.99	-421.4	
7	6476.4	90.27	88.99	6163.0	-385.4	49.6	12.00	88.99	58.0	Anschutz State 5-62-35-4956BH2_LP
8	16256.2	90.27	88.99	6117.0	-213.3	9827.7	0.00	0.00	9830.0	Anschutz State 5-62-35-4956BH2_PBHL

## PROJECT DETAILS: WELD COUNTY, COLORADO

Geodetic System: US State Plane 1983  
Datum: North American Datum 1983  
Ellipsoid: GRS 1980  
Zone: Colorado Northern Zone

## FORMATION TOP DETAILS

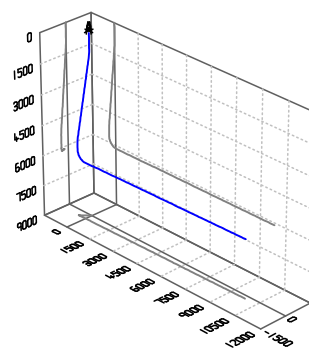
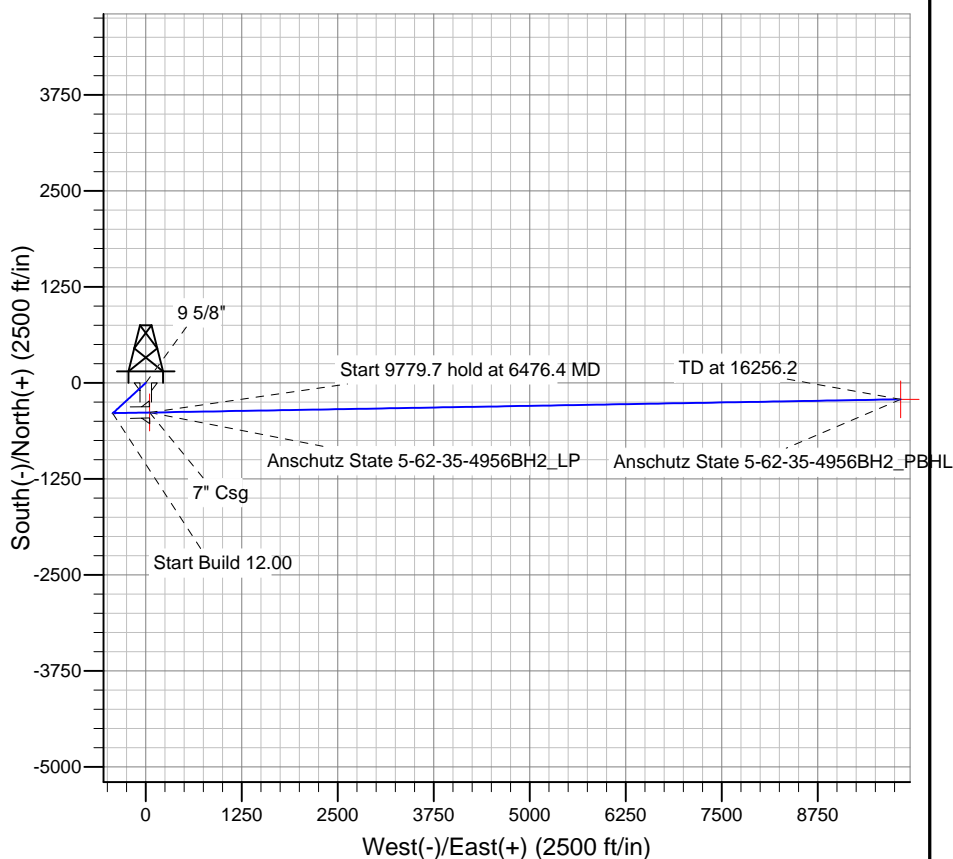
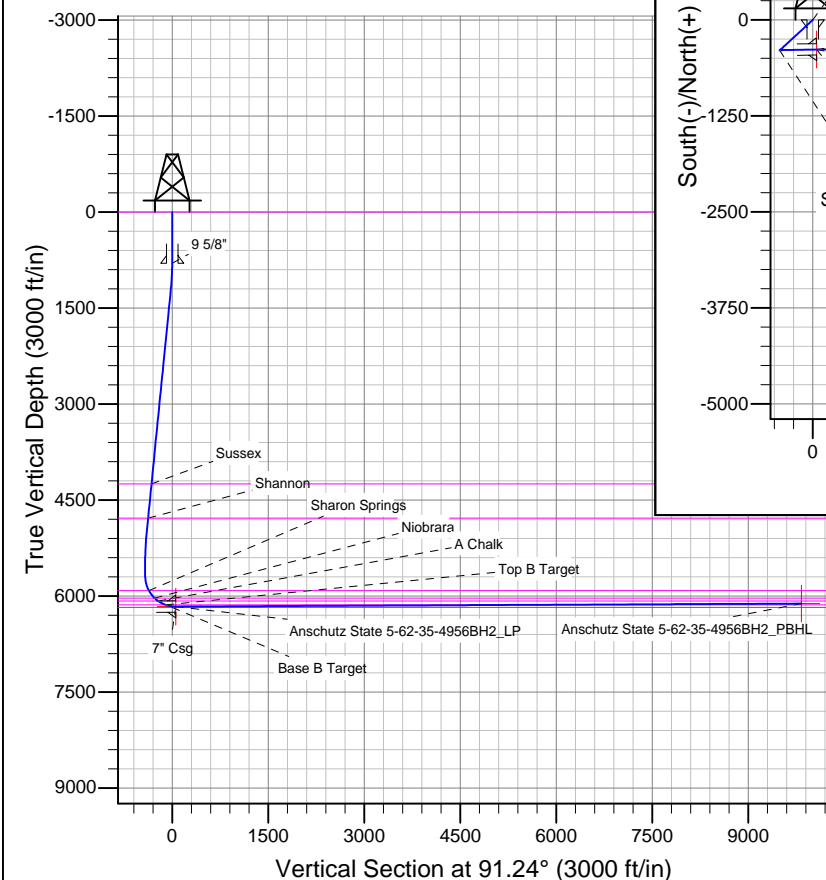
TVDPath	MDPath	Formation
0.0	0.0	Base B Target
4247.0	4276.9	Base of Fox Hills (Outcrop)
4781.0	4816.0	Sussex
5916.0	5964.7	Shannon
6032.0	6111.9	Sharon Springs
6078.0	6184.9	Niobrara
6138.0	6319.0	A Chalk
6138.0	6319.0	Top B Target

## CASING DETAILS

TVD	MD	Name	Size
800.0	800.0	9 5/8"	9-5/8
6163.0	6476.4	7" Csg	7

## WELLBORE TARGET DETAILS

Name	TVD	+N/-S	+E/-W	Shape
Anschutz State 5-62-35-4956BH2_PBHL	6117.0	-213.3	9827.7	Point
Anschutz State 5-62-35-4956BH2_LP	6163.0	-385.4	49.6	Point



Azimuths to True North  
Magnetic North: 8.14°  
Magnetic Field  
Strength: 52794.7snT  
Dip Angle: 66.97°  
Date: 11/21/2014  
Model: IGRF2010

# **BILL BARRETT CORP**

**WELD COUNTY, COLORADO**

**Anschutz State 5-62-35 NWSW Pad**

**Anschutz State 5-62-35-4956BH2**

**Wellbore #1**

**Plan: Design #1**

## **Standard Planning Report**

**21 November, 2014**

**Bill Barrett Corp**  
Planning Report

<b>Database:</b>	Compass	<b>Local Co-ordinate Reference:</b>	Well Anschutz State 5-62-35-4956BH2
<b>Company:</b>	BILL BARRETT CORP	<b>TVD Reference:</b>	KB @ 4602.0ft (Original Well Elev)
<b>Project:</b>	WELD COUNTY, COLORADO	<b>MD Reference:</b>	KB @ 4602.0ft (Original Well Elev)
<b>Site:</b>	Anschutz State 5-62-35 NWSW Pad	<b>North Reference:</b>	True
<b>Well:</b>	Anschutz State 5-62-35-4956BH2	<b>Survey Calculation Method:</b>	Minimum Curvature
<b>Wellbore:</b>	Wellbore #1		
<b>Design:</b>	Design #1		

<b>Project</b>	WELD COUNTY, COLORADO		
<b>Map System:</b>	US State Plane 1983	<b>System Datum:</b>	Mean Sea Level
<b>Geo Datum:</b>	North American Datum 1983		
<b>Map Zone:</b>	Colorado Northern Zone		

Site		Anschutz State 5-62-35 NWSW Pad				
Site Position:		Northing:	1,373,777.32 ft	Latitude:	40° 21' 11.520 N	
From:	Lat/Long	Easting:	3,334,656.71 ft	Longitude:	104° 17' 57.109 W	
Position Uncertainty:		0.0 ft	Slot Radius:	"	Grid Convergence:	0.78 °

Well	Anschutz State 5-62-35-4956BH2					
Well Position	+N-S	30.2 ft	Northing:	1,373,810.25 ft	Latitude:	40° 21' 11.819 N
	+E-W	199.6 ft	Easting:	3,334,855.84 ft	Longitude:	104° 17' 54.532 W
Position Uncertainty		0.0 ft	Wellhead Elevation:	ft	Ground Level:	4,581.0ft

<b>Wellbore</b>	Wellbore #1				
-----------------	-------------	--	--	--	--

Magnetics	Model Name	Sample Date	Declination (°)	Dip Angle (°)	Field Strength (nT)
	IGRF2010	11/21/2014	8.14	66.97	52,795

<b>Design</b>	Design #1				
---------------	-----------	--	--	--	--

<b>Audit Notes:</b>					
<b>Version:</b>	<b>Phase:</b>	PLAN		<b>Tie On Depth:</b>	0.0
<b>Vertical Section:</b>	<b>Depth From (TVD)</b>	<b>+N/-S</b>	<b>+E/-W</b>	<b>Direction</b>	
	(ft)	(ft)	(ft)	(°)	
	0.0	0.0	0.0	91.24	

Plan Sections										
Measured Depth (ft)	Inclination (°)	Azimuth (°)	Vertical Depth (ft)	+N/-S (ft)	+E/-W (ft)	Dogleg Rate (°/100ft)	Build Rate (°/100ft)	Turn Rate (°/100ft)	TFO (°)	Target
0.0	0.00	0.00	0.0	0.0	0.0	0.00	0.00	0.00	0.00	
800.0	0.00	0.00	800.0	0.0	0.0	0.00	0.00	0.00	0.00	
1,191.2	7.82	227.51	1,190.0	-18.0	-19.7	2.00	2.00	0.00	227.51	
5,083.0	7.82	227.51	5,045.5	-375.8	-410.4	0.00	0.00	0.00	0.00	
5,474.2	0.00	88.99	5,435.5	-393.9	-430.0	2.00	-2.00	0.00	180.00	
5,724.2	0.00	88.99	5,685.5	-393.9	-430.0	0.00	0.00	0.00	88.99	
6,476.4	90.27	88.99	6,163.0	-385.4	49.6	12.00	12.00	0.00	88.99	Anschutz State 5-6;
16,256.2	90.27	88.99	6,117.0	-213.3	9,827.7	0.00	0.00	0.00	0.00	Anschutz State 5-6;

**Bill Barrett Corp**  
Planning Report

<b>Database:</b>	Compass	<b>Local Co-ordinate Reference:</b>	Well Anschutz State 5-62-35-4956BH2
<b>Company:</b>	BILL BARRETT CORP	<b>TVD Reference:</b>	KB @ 4602.0ft (Original Well Elev)
<b>Project:</b>	WELD COUNTY, COLORADO	<b>MD Reference:</b>	KB @ 4602.0ft (Original Well Elev)
<b>Site:</b>	Anschutz State 5-62-35 NWSW Pad	<b>North Reference:</b>	True
<b>Well:</b>	Anschutz State 5-62-35-4956BH2	<b>Survey Calculation Method:</b>	Minimum Curvature
<b>Wellbore:</b>	Wellbore #1		
<b>Design:</b>	Design #1		

**Planned Survey**

Measured Depth (ft)	Inclination (°)	Azimuth (°)	Vertical Depth (ft)	+N/-S (ft)	+E/-W (ft)	Vertical Section (ft)	Dogleg Rate (°/100ft)	Build Rate (°/100ft)	Turn Rate (°/100ft)
0.0	0.00	0.00	0.0	0.0	0.0	0.0	0.00	0.00	0.00
<b>Base of Fox Hills (Outcrop)</b>									
100.0	0.00	0.00	100.0	0.0	0.0	0.0	0.00	0.00	0.00
200.0	0.00	0.00	200.0	0.0	0.0	0.0	0.00	0.00	0.00
300.0	0.00	0.00	300.0	0.0	0.0	0.0	0.00	0.00	0.00
400.0	0.00	0.00	400.0	0.0	0.0	0.0	0.00	0.00	0.00
500.0	0.00	0.00	500.0	0.0	0.0	0.0	0.00	0.00	0.00
600.0	0.00	0.00	600.0	0.0	0.0	0.0	0.00	0.00	0.00
700.0	0.00	0.00	700.0	0.0	0.0	0.0	0.00	0.00	0.00
800.0	0.00	0.00	800.0	0.0	0.0	0.0	0.00	0.00	0.00
<b>9 5/8"</b>									
900.0	2.00	227.51	900.0	-1.2	-1.3	-1.3	2.00	2.00	0.00
1,000.0	4.00	227.51	999.8	-4.7	-5.1	-5.0	2.00	2.00	0.00
1,100.0	6.00	227.51	1,099.5	-10.6	-11.6	-11.3	2.00	2.00	0.00
1,191.2	7.82	227.51	1,190.0	-18.0	-19.7	-19.3	2.00	2.00	0.00
1,200.0	7.82	227.51	1,198.7	-18.8	-20.5	-20.1	0.00	0.00	0.00
1,300.0	7.82	227.51	1,297.8	-28.0	-30.6	-30.0	0.00	0.00	0.00
1,400.0	7.82	227.51	1,396.8	-37.2	-40.6	-39.8	0.00	0.00	0.00
1,500.0	7.82	227.51	1,495.9	-46.4	-50.7	-49.6	0.00	0.00	0.00
1,600.0	7.82	227.51	1,595.0	-55.6	-60.7	-59.5	0.00	0.00	0.00
1,700.0	7.82	227.51	1,694.0	-64.8	-70.7	-69.3	0.00	0.00	0.00
1,800.0	7.82	227.51	1,793.1	-74.0	-80.8	-79.2	0.00	0.00	0.00
1,900.0	7.82	227.51	1,892.2	-83.2	-90.8	-89.0	0.00	0.00	0.00
2,000.0	7.82	227.51	1,991.3	-92.4	-100.9	-98.8	0.00	0.00	0.00
2,100.0	7.82	227.51	2,090.3	-101.6	-110.9	-108.7	0.00	0.00	0.00
2,200.0	7.82	227.51	2,189.4	-110.8	-120.9	-118.5	0.00	0.00	0.00
2,300.0	7.82	227.51	2,288.5	-120.0	-131.0	-128.3	0.00	0.00	0.00
2,400.0	7.82	227.51	2,387.5	-129.2	-141.0	-138.2	0.00	0.00	0.00
2,500.0	7.82	227.51	2,486.6	-138.3	-151.1	-148.0	0.00	0.00	0.00
2,600.0	7.82	227.51	2,585.7	-147.5	-161.1	-157.9	0.00	0.00	0.00
2,700.0	7.82	227.51	2,684.7	-156.7	-171.1	-167.7	0.00	0.00	0.00
2,800.0	7.82	227.51	2,783.8	-165.9	-181.2	-177.5	0.00	0.00	0.00
2,900.0	7.82	227.51	2,882.9	-175.1	-191.2	-187.4	0.00	0.00	0.00
3,000.0	7.82	227.51	2,981.9	-184.3	-201.3	-197.2	0.00	0.00	0.00
3,100.0	7.82	227.51	3,081.0	-193.5	-211.3	-207.0	0.00	0.00	0.00
3,200.0	7.82	227.51	3,180.1	-202.7	-221.3	-216.9	0.00	0.00	0.00
3,300.0	7.82	227.51	3,279.2	-211.9	-231.4	-226.7	0.00	0.00	0.00
3,400.0	7.82	227.51	3,378.2	-221.1	-241.4	-236.6	0.00	0.00	0.00
3,500.0	7.82	227.51	3,477.3	-230.3	-251.4	-246.4	0.00	0.00	0.00
3,600.0	7.82	227.51	3,576.4	-239.5	-261.5	-256.2	0.00	0.00	0.00
3,700.0	7.82	227.51	3,675.4	-248.7	-271.5	-266.1	0.00	0.00	0.00
3,800.0	7.82	227.51	3,774.5	-257.9	-281.6	-275.9	0.00	0.00	0.00
3,900.0	7.82	227.51	3,873.6	-267.1	-291.6	-285.7	0.00	0.00	0.00
4,000.0	7.82	227.51	3,972.6	-276.3	-301.6	-295.6	0.00	0.00	0.00
4,100.0	7.82	227.51	4,071.7	-285.5	-311.7	-305.4	0.00	0.00	0.00
4,200.0	7.82	227.51	4,170.8	-294.7	-321.7	-315.2	0.00	0.00	0.00
4,276.9	7.82	227.51	4,247.0	-301.7	-329.4	-322.8	0.00	0.00	0.00
<b>Sussex</b>									
4,300.0	7.82	227.51	4,269.8	-303.9	-331.8	-325.1	0.00	0.00	0.00
4,400.0	7.82	227.51	4,368.9	-313.0	-341.8	-334.9	0.00	0.00	0.00
4,500.0	7.82	227.51	4,468.0	-322.2	-351.8	-344.8	0.00	0.00	0.00
4,600.0	7.82	227.51	4,567.1	-331.4	-361.9	-354.6	0.00	0.00	0.00
4,700.0	7.82	227.51	4,666.1	-340.6	-371.9	-364.4	0.00	0.00	0.00

**Bill Barrett Corp**  
Planning Report

<b>Database:</b>	Compass	<b>Local Co-ordinate Reference:</b>	Well Anschutz State 5-62-35-4956BH2
<b>Company:</b>	BILL BARRETT CORP	<b>TVD Reference:</b>	KB @ 4602.0ft (Original Well Elev)
<b>Project:</b>	WELD COUNTY, COLORADO	<b>MD Reference:</b>	KB @ 4602.0ft (Original Well Elev)
<b>Site:</b>	Anschutz State 5-62-35 NWSW Pad	<b>North Reference:</b>	True
<b>Well:</b>	Anschutz State 5-62-35-4956BH2	<b>Survey Calculation Method:</b>	Minimum Curvature
<b>Wellbore:</b>	Wellbore #1		
<b>Design:</b>	Design #1		

Planned Survey									
Measured Depth (ft)	Inclination (°)	Azimuth (°)	Vertical Depth (ft)	+N/-S (ft)	+E/-W (ft)	Vertical Section (ft)	Dogleg Rate (°/100ft)	Build Rate (°/100ft)	Turn Rate (°/100ft)
4,800.0	7.82	227.51	4,765.2	-349.8	-382.0	-374.3	0.00	0.00	0.00
4,816.0	7.82	227.51	4,781.0	-351.3	-383.6	-375.8	0.00	0.00	0.00
<b>Shannon</b>									
4,900.0	7.82	227.51	4,864.3	-359.0	-392.0	-384.1	0.00	0.00	0.00
5,000.0	7.82	227.51	4,963.3	-368.2	-402.0	-393.9	0.00	0.00	0.00
5,083.0	7.82	227.51	5,045.5	-375.8	-410.4	-402.1	0.00	0.00	0.00
5,100.0	7.48	227.51	5,062.4	-377.4	-412.0	-403.7	2.00	-2.00	0.00
5,200.0	5.48	227.51	5,161.8	-385.0	-420.4	-411.9	2.00	-2.00	0.00
5,300.0	3.48	227.51	5,261.4	-390.3	-426.1	-417.6	2.00	-2.00	0.00
5,400.0	1.48	227.51	5,361.3	-393.2	-429.3	-420.7	2.00	-2.00	0.00
5,474.2	0.00	88.99	5,435.5	-393.9	-430.0	-421.4	2.00	-2.00	0.00
5,500.0	0.00	88.99	5,461.3	-393.9	-430.0	-421.4	0.00	0.00	0.00
5,600.0	0.00	88.99	5,561.3	-393.9	-430.0	-421.4	0.00	0.00	0.00
5,700.0	0.00	88.99	5,661.3	-393.9	-430.0	-421.4	0.00	0.00	0.00
5,724.2	0.00	88.99	5,685.5	-393.9	-430.0	-421.4	0.00	0.00	0.00
5,800.0	9.10	88.99	5,761.0	-393.7	-424.0	-415.4	12.00	12.00	0.00
5,900.0	21.10	88.99	5,857.4	-393.3	-398.0	-389.4	12.00	12.00	0.00
5,964.7	28.86	88.99	5,916.0	-392.8	-370.7	-362.1	12.00	12.00	0.00
<b>Sharon Springs</b>									
6,000.0	33.10	88.99	5,946.3	-392.5	-352.6	-344.0	12.00	12.00	0.00
6,100.0	45.10	88.99	6,023.7	-391.4	-289.6	-281.1	12.00	12.00	0.00
6,111.9	46.52	88.99	6,032.0	-391.2	-281.1	-272.6	12.00	12.00	0.00
<b>Niobrara</b>									
6,184.9	55.28	88.99	6,078.0	-390.2	-224.5	-216.0	12.00	12.00	0.00
<b>A Chalk</b>									
6,200.0	57.10	88.99	6,086.4	-390.0	-212.0	-203.5	12.00	12.00	0.00
6,300.0	69.10	88.99	6,131.6	-388.5	-123.0	-114.5	12.00	12.00	0.00
6,319.0	71.38	88.99	6,138.0	-388.1	-105.1	-96.7	12.00	12.00	0.00
<b>Top B Target</b>									
6,400.0	81.10	88.99	6,157.3	-386.8	-26.5	-18.1	12.00	12.00	0.00
6,476.4	90.26	88.99	6,163.0	-385.4	49.6	57.9	12.00	12.00	0.00
<b>7" Csg</b>									
6,500.0	90.27	88.99	6,162.9	-385.0	73.2	81.5	0.02	0.02	0.00
6,600.0	90.27	88.99	6,162.4	-383.2	173.1	181.4	0.00	0.00	0.00
6,700.0	90.27	88.99	6,161.9	-381.5	273.1	281.3	0.00	0.00	0.00
6,800.0	90.27	88.99	6,161.5	-379.7	373.1	381.3	0.00	0.00	0.00
6,900.0	90.27	88.99	6,161.0	-378.0	473.1	481.2	0.00	0.00	0.00
7,000.0	90.27	88.99	6,160.5	-376.2	573.1	581.1	0.00	0.00	0.00
7,100.0	90.27	88.99	6,160.1	-374.4	673.1	681.0	0.00	0.00	0.00
7,200.0	90.27	88.99	6,159.6	-372.7	773.0	781.0	0.00	0.00	0.00
7,300.0	90.27	88.99	6,159.1	-370.9	873.0	880.9	0.00	0.00	0.00
7,400.0	90.27	88.99	6,158.7	-369.2	973.0	980.8	0.00	0.00	0.00
7,500.0	90.27	88.99	6,158.2	-367.4	1,073.0	1,080.7	0.00	0.00	0.00
7,600.0	90.27	88.99	6,157.7	-365.6	1,173.0	1,180.6	0.00	0.00	0.00
7,700.0	90.27	88.99	6,157.2	-363.9	1,273.0	1,280.6	0.00	0.00	0.00
7,800.0	90.27	88.99	6,156.8	-362.1	1,372.9	1,380.5	0.00	0.00	0.00
7,900.0	90.27	88.99	6,156.3	-360.4	1,472.9	1,480.4	0.00	0.00	0.00
8,000.0	90.27	88.99	6,155.8	-358.6	1,572.9	1,580.3	0.00	0.00	0.00
8,100.0	90.27	88.99	6,155.4	-356.8	1,672.9	1,680.2	0.00	0.00	0.00
8,200.0	90.27	88.99	6,154.9	-355.1	1,772.9	1,780.2	0.00	0.00	0.00
8,300.0	90.27	88.99	6,154.4	-353.3	1,872.9	1,880.1	0.00	0.00	0.00
8,400.0	90.27	88.99	6,154.0	-351.6	1,972.8	1,980.0	0.00	0.00	0.00
8,500.0	90.27	88.99	6,153.5	-349.8	2,072.8	2,079.9	0.00	0.00	0.00

# Bill Barrett Corp

## Planning Report

<b>Database:</b>	Compass	<b>Local Co-ordinate Reference:</b>	Well Anschutz State 5-62-35-4956BH2
<b>Company:</b>	BILL BARRETT CORP	<b>TVD Reference:</b>	KB @ 4602.0ft (Original Well Elev)
<b>Project:</b>	WELD COUNTY, COLORADO	<b>MD Reference:</b>	KB @ 4602.0ft (Original Well Elev)
<b>Site:</b>	Anschutz State 5-62-35 NWSW Pad	<b>North Reference:</b>	True
<b>Well:</b>	Anschutz State 5-62-35-4956BH2	<b>Survey Calculation Method:</b>	Minimum Curvature
<b>Wellbore:</b>	Wellbore #1		
<b>Design:</b>	Design #1		

Planned Survey									
Measured Depth (ft)	Inclination (°)	Azimuth (°)	Vertical Depth (ft)	+N/-S (ft)	+E/-W (ft)	Vertical Section (ft)	Dogleg Rate (°/100ft)	Build Rate (°/100ft)	Turn Rate (°/100ft)
8,600.0	90.27	88.99	6,153.0	-348.0	2,172.8	2,179.9	0.00	0.00	0.00
8,700.0	90.27	88.99	6,152.5	-346.3	2,272.8	2,279.8	0.00	0.00	0.00
8,800.0	90.27	88.99	6,152.1	-344.5	2,372.8	2,379.7	0.00	0.00	0.00
8,900.0	90.27	88.99	6,151.6	-342.8	2,472.8	2,479.6	0.00	0.00	0.00
9,000.0	90.27	88.99	6,151.1	-341.0	2,572.7	2,579.5	0.00	0.00	0.00
9,100.0	90.27	88.99	6,150.7	-339.3	2,672.7	2,679.5	0.00	0.00	0.00
9,200.0	90.27	88.99	6,150.2	-337.5	2,772.7	2,779.4	0.00	0.00	0.00
9,300.0	90.27	88.99	6,149.7	-335.7	2,872.7	2,879.3	0.00	0.00	0.00
9,400.0	90.27	88.99	6,149.2	-334.0	2,972.7	2,979.2	0.00	0.00	0.00
9,500.0	90.27	88.99	6,148.8	-332.2	3,072.7	3,079.1	0.00	0.00	0.00
9,600.0	90.27	88.99	6,148.3	-330.5	3,172.6	3,179.1	0.00	0.00	0.00
9,700.0	90.27	88.99	6,147.8	-328.7	3,272.6	3,279.0	0.00	0.00	0.00
9,800.0	90.27	88.99	6,147.4	-326.9	3,372.6	3,378.9	0.00	0.00	0.00
9,900.0	90.27	88.99	6,146.9	-325.2	3,472.6	3,478.8	0.00	0.00	0.00
10,000.0	90.27	88.99	6,146.4	-323.4	3,572.6	3,578.8	0.00	0.00	0.00
10,100.0	90.27	88.99	6,146.0	-321.7	3,672.6	3,678.7	0.00	0.00	0.00
10,200.0	90.27	88.99	6,145.5	-319.9	3,772.5	3,778.6	0.00	0.00	0.00
10,300.0	90.27	88.99	6,145.0	-318.1	3,872.5	3,878.5	0.00	0.00	0.00
10,400.0	90.27	88.99	6,144.5	-316.4	3,972.5	3,978.4	0.00	0.00	0.00
10,500.0	90.27	88.99	6,144.1	-314.6	4,072.5	4,078.4	0.00	0.00	0.00
10,600.0	90.27	88.99	6,143.6	-312.9	4,172.5	4,178.3	0.00	0.00	0.00
10,700.0	90.27	88.99	6,143.1	-311.1	4,272.5	4,278.2	0.00	0.00	0.00
10,800.0	90.27	88.99	6,142.7	-309.3	4,372.4	4,378.1	0.00	0.00	0.00
10,900.0	90.27	88.99	6,142.2	-307.6	4,472.4	4,478.1	0.00	0.00	0.00
11,000.0	90.27	88.99	6,141.7	-305.8	4,572.4	4,578.0	0.00	0.00	0.00
11,100.0	90.27	88.99	6,141.3	-304.1	4,672.4	4,677.9	0.00	0.00	0.00
11,200.0	90.27	88.99	6,140.8	-302.3	4,772.4	4,777.8	0.00	0.00	0.00
11,300.0	90.27	88.99	6,140.3	-300.5	4,872.4	4,877.7	0.00	0.00	0.00
11,400.0	90.27	88.99	6,139.8	-298.8	4,972.3	4,977.7	0.00	0.00	0.00
11,500.0	90.27	88.99	6,139.4	-297.0	5,072.3	5,077.6	0.00	0.00	0.00
11,600.0	90.27	88.99	6,138.9	-295.3	5,172.3	5,177.5	0.00	0.00	0.00
11,700.0	90.27	88.99	6,138.4	-293.5	5,272.3	5,277.4	0.00	0.00	0.00
11,800.0	90.27	88.99	6,138.0	-291.7	5,372.3	5,377.3	0.00	0.00	0.00
11,900.0	90.27	88.99	6,137.5	-290.0	5,472.3	5,477.3	0.00	0.00	0.00
12,000.0	90.27	88.99	6,137.0	-288.2	5,572.2	5,577.2	0.00	0.00	0.00
12,100.0	90.27	88.99	6,136.5	-286.5	5,672.2	5,677.1	0.00	0.00	0.00
12,200.0	90.27	88.99	6,136.1	-284.7	5,772.2	5,777.0	0.00	0.00	0.00
12,300.0	90.27	88.99	6,135.6	-282.9	5,872.2	5,877.0	0.00	0.00	0.00
12,400.0	90.27	88.99	6,135.1	-281.2	5,972.2	5,976.9	0.00	0.00	0.00
12,500.0	90.27	88.99	6,134.7	-279.4	6,072.2	6,076.8	0.00	0.00	0.00
12,600.0	90.27	88.99	6,134.2	-277.7	6,172.1	6,176.7	0.00	0.00	0.00
12,700.0	90.27	88.99	6,133.7	-275.9	6,272.1	6,276.6	0.00	0.00	0.00
12,800.0	90.27	88.99	6,133.3	-274.1	6,372.1	6,376.6	0.00	0.00	0.00
12,900.0	90.27	88.99	6,132.8	-272.4	6,472.1	6,476.5	0.00	0.00	0.00
13,000.0	90.27	88.99	6,132.3	-270.6	6,572.1	6,576.4	0.00	0.00	0.00
13,100.0	90.27	88.99	6,131.8	-268.9	6,672.1	6,676.3	0.00	0.00	0.00
13,200.0	90.27	88.99	6,131.4	-267.1	6,772.0	6,776.3	0.00	0.00	0.00
13,300.0	90.27	88.99	6,130.9	-265.4	6,872.0	6,876.2	0.00	0.00	0.00
13,400.0	90.27	88.99	6,130.4	-263.6	6,972.0	6,976.1	0.00	0.00	0.00
13,500.0	90.27	88.99	6,130.0	-261.8	7,072.0	7,076.0	0.00	0.00	0.00
13,600.0	90.27	88.99	6,129.5	-260.1	7,172.0	7,175.9	0.00	0.00	0.00
13,700.0	90.27	88.99	6,129.0	-258.3	7,272.0	7,275.9	0.00	0.00	0.00
13,800.0	90.27	88.99	6,128.6	-256.6	7,371.9	7,375.8	0.00	0.00	0.00
13,900.0	90.27	88.99	6,128.1	-254.8	7,471.9	7,475.7	0.00	0.00	0.00

**Bill Barrett Corp**  
Planning Report

<b>Database:</b>	Compass	<b>Local Co-ordinate Reference:</b>	Well Anschutz State 5-62-35-4956BH2
<b>Company:</b>	BILL BARRETT CORP	<b>TVD Reference:</b>	KB @ 4602.0ft (Original Well Elev)
<b>Project:</b>	WELD COUNTY, COLORADO	<b>MD Reference:</b>	KB @ 4602.0ft (Original Well Elev)
<b>Site:</b>	Anschutz State 5-62-35 NWSW Pad	<b>North Reference:</b>	True
<b>Well:</b>	Anschutz State 5-62-35-4956BH2	<b>Survey Calculation Method:</b>	Minimum Curvature
<b>Wellbore:</b>	Wellbore #1		
<b>Design:</b>	Design #1		

Planned Survey										
Measured Depth (ft)	Inclination (°)	Azimuth (°)	Vertical Depth (ft)	+N/-S (ft)	+E/-W (ft)	Vertical Section (ft)	Dogleg Rate (°/100ft)	Build Rate (°/100ft)	Turn Rate (°/100ft)	
14,000.0	90.27	88.99	6,127.6	-253.0	7,571.9	7,575.6	0.00	0.00	0.00	
14,100.0	90.27	88.99	6,127.1	-251.3	7,671.9	7,675.5	0.00	0.00	0.00	
14,200.0	90.27	88.99	6,126.7	-249.5	7,771.9	7,775.5	0.00	0.00	0.00	
14,300.0	90.27	88.99	6,126.2	-247.8	7,871.9	7,875.4	0.00	0.00	0.00	
14,400.0	90.27	88.99	6,125.7	-246.0	7,971.8	7,975.3	0.00	0.00	0.00	
14,500.0	90.27	88.99	6,125.3	-244.2	8,071.8	8,075.2	0.00	0.00	0.00	
14,600.0	90.27	88.99	6,124.8	-242.5	8,171.8	8,175.2	0.00	0.00	0.00	
14,700.0	90.27	88.99	6,124.3	-240.7	8,271.8	8,275.1	0.00	0.00	0.00	
14,800.0	90.27	88.99	6,123.8	-239.0	8,371.8	8,375.0	0.00	0.00	0.00	
14,900.0	90.27	88.99	6,123.4	-237.2	8,471.8	8,474.9	0.00	0.00	0.00	
15,000.0	90.27	88.99	6,122.9	-235.4	8,571.8	8,574.8	0.00	0.00	0.00	
15,100.0	90.27	88.99	6,122.4	-233.7	8,671.7	8,674.8	0.00	0.00	0.00	
15,200.0	90.27	88.99	6,122.0	-231.9	8,771.7	8,774.7	0.00	0.00	0.00	
15,300.0	90.27	88.99	6,121.5	-230.2	8,871.7	8,874.6	0.00	0.00	0.00	
15,400.0	90.27	88.99	6,121.0	-228.4	8,971.7	8,974.5	0.00	0.00	0.00	
15,500.0	90.27	88.99	6,120.6	-226.6	9,071.7	9,074.4	0.00	0.00	0.00	
15,600.0	90.27	88.99	6,120.1	-224.9	9,171.7	9,174.4	0.00	0.00	0.00	
15,700.0	90.27	88.99	6,119.6	-223.1	9,271.6	9,274.3	0.00	0.00	0.00	
15,800.0	90.27	88.99	6,119.1	-221.4	9,371.6	9,374.2	0.00	0.00	0.00	
15,900.0	90.27	88.99	6,118.7	-219.6	9,471.6	9,474.1	0.00	0.00	0.00	
16,000.0	90.27	88.99	6,118.2	-217.8	9,571.6	9,574.1	0.00	0.00	0.00	
16,100.0	90.27	88.99	6,117.7	-216.1	9,671.6	9,674.0	0.00	0.00	0.00	
16,200.0	90.27	88.99	6,117.3	-214.3	9,771.6	9,773.9	0.00	0.00	0.00	
16,256.2	90.27	88.99	6,117.0	-213.3	9,827.7	9,830.0	0.00	0.00	0.00	

Casing Points					
Measured Depth (ft)	Vertical Depth (ft)	Name	Casing Diameter (")	Hole Diameter (")	
800.0	800.0	9 5/8"	9-5/8	13-1/2	
6,476.4	6,163.0	7" Csg	7	8-3/4	

Formations						
Measured Depth (ft)	Vertical Depth (ft)	Name	Lithology	Dip (°)	Dip Direction (°)	
0.0	0.0	Base of Fox Hills (Outcrop)		0.00		
4,276.9	4,247.0	Sussex		0.00		
4,816.0	4,781.0	Shannon		0.00		
5,964.7	5,916.0	Sharon Springs		0.00		
6,111.9	6,032.0	Niobrara		0.00		
6,184.9	6,078.0	A Chalk		0.00		
6,319.0	6,138.0	Top B Target		0.00		
	6,175.0	Base B Target		0.00		