

EXTRACTION OIL & GAS

Location: COLORADO Slot: SLOT#06 KODAK 10 (1341'FNL & 1042'FWL, SEC.27)
Field: WELD COUNTY (NAD83/TRUE NORTH) Well: KODAK 10
Facility: SEC.27-T06N-R67W Wellbore: KODAK 10 PWB

Plot reference wellpath is KODAK 10 PWP (REV-B.0)

True vertical depths are referenced to FRONTIER 10 (22KB) (RKB)	Grid System: NAD83 / Lambert Colorado SP, Northern Zone (501), US feet
Measured depths are referenced to FRONTIER 10 (22KB) (RKB)	North Reference: True north
FRONTIER 10 (22KB) (RKB) to Mean Sea Level: 4792 feet	Scale: True distance
Mean Sea Level to Mud line (At Slot: SLOT#06 KODAK 10 (1341'FNL & 1042'FWL, SEC.27)): 0 feet	Depths are in feet
Coordinates are in feet referenced to Slot	Created by: ingnjmr on 12/15/2014

Location Information

Facility Name	Grid East (US ft)	Grid North (US ft)	Latitude	Longitude
SEC.27-T06N-R67W	3171020.645	1411663.140	40°27'42.444"N	104°53'07.368"W
Slot	Local N (ft)	Local E (ft)	Grid East (US ft)	Grid North (US ft)
SLOT#06 KODAK 10 (1341'FNL & 1042'FWL, SEC.27)	-109.29	0.00	3171021.402	1411553.852
FRONTIER 10 (22KB) (RKB) to Mud line (At Slot: SLOT#06 KODAK 10 (1341'FNL & 1042'FWL, SEC.27))				4792ft
Mean Sea Level to Mud line (At Slot: SLOT#06 KODAK 10 (1341'FNL & 1042'FWL, SEC.27))				0ft
FRONTIER 10 (22KB) (RKB) to Mean Sea Level				4792ft

Targets

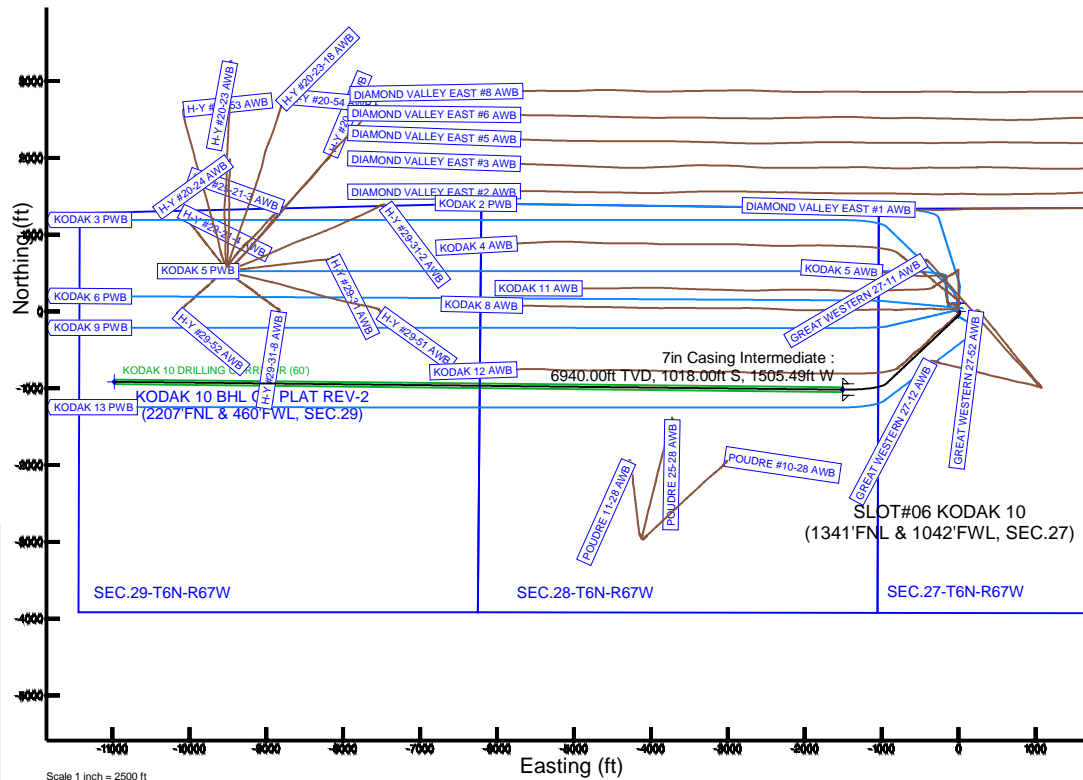
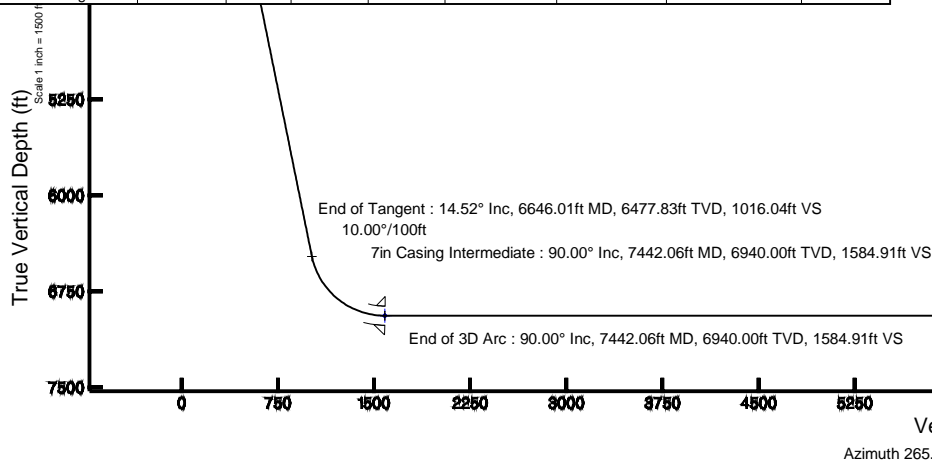
Name	MD (ft)	TVD (ft)	Local N (ft)	Local E (ft)	Grid East (US ft)	Grid North (US ft)	Latitude	Longitude
SEC.27-T06N-R67W		0.00	109.29	0.00	3171020.64	1411663.14	40°27'42.444"N	104°53'07.368"W
SEC.28-T6N-R67W		0.00	109.29	0.00	3171020.64	1411663.14	40°27'42.444"N	104°53'07.368"W
SEC.29-T6N-R67W		0.00	109.29	0.00	3171020.64	1411663.14	40°27'42.444"N	104°53'07.368"W
KODAK 10 BHL ON PLAT REV-2 (2207'FNL & 460'FWL, SEC.29)	16912.44	6940.00	-915.64	-10975.31	3168053.12	1410562.21	40°27'32.252"N	104°55'29.352"W
KODAK 10 DRILLING CORRIDOR (00')		6940.00	0.00	0.00	3171021.40	1411553.85	40°27'41.364"N	104°53'07.368"W
KODAK 10 LANDING POINT REV-2	7442.06	6940.00	-1018.00	-1505.49	3169523.06	1410526.48	40°27'31.304"N	104°53'26.844"W

Survey Program

Start MD (ft)	End MD (ft)	Tool	Model	Log Name/Comment	Wellbore
22.00	17000.00	NaviTrak	NaviTrak (Standard)		KODAK 10 PWB

Well Profile Data

Design Comment	MD (ft)	Inc (°)	Az (°)	TVD (ft)	Local N (ft)	Local E (ft)	DLS (°/100ft)	VS (ft)
Tie On	22.00	0.000	90.000	22.00	0.00	0.00	0.00	0.00
End of Tangent	200.00	0.000	90.000	200.00	0.00	0.00	0.00	0.00
End of Build	266.67	2.000	90.000	266.65	0.00	1.16	3.00	-1.16
End of Tangent	850.37	2.000	90.000	850.00	0.00	21.53	0.00	-21.46
End of 3D Arc	999.42	4.000	180.000	998.90	-5.20	24.14	3.00	-23.62
End of Tangent	1049.42	4.000	180.000	1048.77	-8.69	24.14	0.00	-23.33
End of 3D Arc	1655.35	14.518	226.652	1646.53	-82.23	-31.30	2.00	38.03
End of Tangent	6646.01	14.518	226.652	6477.83	-941.01	-941.07	0.00	1016.04
End of 3D Arc	7442.06	90.000	270.619	6940.00	-1018.00	-1505.49	10.00	1584.91
End of Tangent	16912.44	90.000	270.619	6940.00	-915.64	-10975.31	0.00	11013.44





Planned Wellpath Report

KODAK 10 PWP (REV-B.0)

Page 1 of 9



REFERENCE WELLPATH IDENTIFICATION

Operator	EXTRACTION OIL & GAS	Slot	SLOT#06 KODAK 10 (1341'FNL & 1042'FWL, SEC.27)
Area	COLORADO	Well	KODAK 10
Field	WELD COUNTY (NAD83/TRUE NORTH)	Wellbore	KODAK 10 PWB
Facility	SEC.27-T06N-R67W		

REPORT SETUP INFORMATION

Projection System	NAD83 / Lambert Colorado SP, Northern Zone (501), US feet	Software System	WellArchitect® 4.0.0
North Reference	True	User	Ingmjmr
Scale	0.999964	Report Generated	12/15/2014 at 12:50:10 PM
Convergence at slot	n/a	Database/Source file	Denver/KODAK_10_PWB.xml

WELLPATH LOCATION

	Local coordinates		Grid coordinates		Geographic coordinates	
	North[ft]	East[ft]	Easting[US ft]	Northing[US ft]	Latitude	Longitude
Slot Location	-109.29	0.00	3171021.40	1411553.85	40°27'41.364"N	104°53'07.368"W
Facility Reference Pt			3171020.65	1411663.14	40°27'42.444"N	104°53'07.368"W
Field Reference Pt			3185481.27	1419166.81	40°28'55.560"N	104°49'59.556"W

WELLPATH DATUM

Calculation method	Minimum curvature	FRONTIER 10 (22'KB) (RKB) to Facility Vertical Datum	4792.00ft
Horizontal Reference Pt	Slot	FRONTIER 10 (22'KB) (RKB) to Mean Sea Level	4792.00ft
Vertical Reference Pt	FRONTIER 10 (22'KB) (RKB)	FRONTIER 10 (22'KB) (RKB) to Mud Line at Slot (SLOT#06 KODAK 10 (1341'FNL & 1042'FWL, SEC.27))	4792.00ft
MD Reference Pt	FRONTIER 10 (22'KB) (RKB)	Section Origin	N 0.00, E 0.00 ft
Field Vertical Reference	Mean Sea Level	Section Azimuth	265.23°



Planned Wellpath Report

KODAK 10 PWP (REV-B.0)

Page 2 of 9



REFERENCE WELLPATH IDENTIFICATION

Operator	EXTRACTION OIL & GAS	Slot	SLOT#06 KODAK 10 (1341'FNL & 1042'FWL, SEC.27)
Area	COLORADO	Well	KODAK 10
Field	WELD COUNTY (NAD83/TRUE NORTH)	Wellbore	KODAK 10 PWB
Facility	SEC.27-T06N-R67W		

WELLPATH DATA (179 stations) † = interpolated/extrapolated station

MD [ft]	Inclination [°]	Azimuth [°]	TVD [ft]	Vert Sect [ft]	North [ft]	East [ft]	Latitude	Longitude	DLS [°/100ft]	Comments
0.00†	0.000	90.000	0.00	0.00	0.00	0.00	40°27'41.364"N	104°53'07.368"W	0.00	
22.00	0.000	90.000	22.00	0.00	0.00	0.00	40°27'41.364"N	104°53'07.368"W	0.00	Tie On
122.00†	0.000	90.000	122.00	0.00	0.00	0.00	40°27'41.364"N	104°53'07.368"W	0.00	
200.00	0.000	90.000	200.00	0.00	0.00	0.00	40°27'41.364"N	104°53'07.368"W	0.00	End of Tangent
222.00†	0.660	90.000	222.00	-0.13	0.00	0.13	40°27'41.364"N	104°53'07.366"W	3.00	
266.67	2.000	90.000	266.65	-1.16	0.00	1.16	40°27'41.364"N	104°53'07.353"W	3.00	End of Build
322.00†	2.000	90.000	321.95	-3.08	0.00	3.09	40°27'41.364"N	104°53'07.328"W	0.00	
422.00†	2.000	90.000	421.89	-6.56	0.00	6.58	40°27'41.364"N	104°53'07.283"W	0.00	
522.00†	2.000	90.000	521.83	-10.04	0.00	10.07	40°27'41.364"N	104°53'07.238"W	0.00	
622.00†	2.000	90.000	621.77	-13.52	0.00	13.56	40°27'41.364"N	104°53'07.193"W	0.00	
722.00†	2.000	90.000	721.71	-17.00	0.00	17.05	40°27'41.364"N	104°53'07.147"W	0.00	
822.00†	2.000	90.000	821.65	-20.47	0.00	20.54	40°27'41.364"N	104°53'07.102"W	0.00	
850.37	2.000	90.000	850.00	-21.46	0.00	21.53	40°27'41.364"N	104°53'07.089"W	0.00	End of Tangent
922.00†	2.186	151.600	921.59	-23.25	-1.20	23.43	40°27'41.352"N	104°53'07.065"W	3.00	
999.42	4.000	180.000	998.90	-23.62	-5.20	24.14	40°27'41.313"N	104°53'07.056"W	3.00	End of 3D Arc
1022.00†	4.000	180.000	1021.42	-23.49	-6.78	24.14	40°27'41.297"N	104°53'07.056"W	0.00	
1049.42	4.000	180.000	1048.77	-23.33	-8.69	24.14	40°27'41.278"N	104°53'07.056"W	0.00	End of Tangent
1122.00†	4.885	194.970	1121.14	-22.08	-14.21	23.34	40°27'41.224"N	104°53'07.066"W	2.00	
1222.00†	6.449	207.737	1220.65	-17.62	-23.29	19.62	40°27'41.134"N	104°53'07.114"W	2.00	
1322.00†	8.205	215.315	1319.84	-10.01	-34.09	12.88	40°27'41.027"N	104°53'07.201"W	2.00	
1422.00†	10.051	220.184	1418.57	0.76	-46.58	3.13	40°27'40.904"N	104°53'07.328"W	2.00	
1522.00†	11.947	223.538	1516.73	14.65	-60.75	-9.63	40°27'40.764"N	104°53'07.493"W	2.00	
1622.00†	13.872	225.979	1614.19	31.66	-76.58	-25.38	40°27'40.607"N	104°53'07.696"W	2.00	
1655.35	14.518	226.652	1646.53	38.03	-82.23	-31.30	40°27'40.551"N	104°53'07.773"W	2.00	End of 3D Arc
1722.00†	14.518	226.652	1711.05	51.09	-93.70	-43.45	40°27'40.438"N	104°53'07.930"W	0.00	
1822.00†	14.518	226.652	1807.85	70.69	-110.91	-61.68	40°27'40.268"N	104°53'08.166"W	0.00	
1922.00†	14.518	226.652	1904.66	90.28	-128.12	-79.91	40°27'40.098"N	104°53'08.402"W	0.00	
2022.00†	14.518	226.652	2001.47	109.88	-145.32	-98.14	40°27'39.928"N	104°53'08.638"W	0.00	
2122.00†	14.518	226.652	2098.28	129.48	-162.53	-116.37	40°27'39.758"N	104°53'08.873"W	0.00	
2222.00†	14.518	226.652	2195.08	149.07	-179.74	-134.60	40°27'39.588"N	104°53'09.109"W	0.00	



Planned Wellpath Report

KODAK 10 PWP (REV-B.0)

Page 3 of 9



REFERENCE WELLPATH IDENTIFICATION

Operator	EXTRACTION OIL & GAS	Slot	SLOT#06 KODAK 10 (1341'FNL & 1042'FWL, SEC.27)
Area	COLORADO	Well	KODAK 10
Field	WELD COUNTY (NAD83/TRUE NORTH)	Wellbore	KODAK 10 PWB
Facility	SEC.27-T06N-R67W		

WELLPATH DATA (179 stations) † = interpolated/extrapolated station

MD [ft]	Inclination [°]	Azimuth [°]	TVD [ft]	Vert Sect [ft]	North [ft]	East [ft]	Latitude	Longitude	DLS [°/100ft]	Comments
2322.00†	14.518	226.652	2291.89	168.67	-196.95	-152.83	40°27'39.418"N	104°53'09.345"W	0.00	
2422.00†	14.518	226.652	2388.70	188.27	-214.15	-171.06	40°27'39.248"N	104°53'09.581"W	0.00	
2522.00†	14.518	226.652	2485.50	207.86	-231.36	-189.28	40°27'39.078"N	104°53'09.817"W	0.00	
2622.00†	14.518	226.652	2582.31	227.46	-248.57	-207.51	40°27'38.908"N	104°53'10.053"W	0.00	
2722.00†	14.518	226.652	2679.12	247.06	-265.78	-225.74	40°27'38.738"N	104°53'10.288"W	0.00	
2822.00†	14.518	226.652	2775.92	266.66	-282.98	-243.97	40°27'38.568"N	104°53'10.524"W	0.00	
2922.00†	14.518	226.652	2872.73	286.25	-300.19	-262.20	40°27'38.398"N	104°53'10.760"W	0.00	
3022.00†	14.518	226.652	2969.54	305.85	-317.40	-280.43	40°27'38.228"N	104°53'10.996"W	0.00	
3122.00†	14.518	226.652	3066.34	325.45	-334.61	-298.66	40°27'38.058"N	104°53'11.232"W	0.00	
3222.00†	14.518	226.652	3163.15	345.04	-351.82	-316.89	40°27'37.888"N	104°53'11.468"W	0.00	
3322.00†	14.518	226.652	3259.96	364.64	-369.02	-335.12	40°27'37.717"N	104°53'11.703"W	0.00	
3422.00†	14.518	226.652	3356.77	384.24	-386.23	-353.35	40°27'37.547"N	104°53'11.939"W	0.00	
3522.00†	14.518	226.652	3453.57	403.83	-403.44	-371.58	40°27'37.377"N	104°53'12.175"W	0.00	
3622.00†	14.518	226.652	3550.38	423.43	-420.65	-389.81	40°27'37.207"N	104°53'12.411"W	0.00	
3722.00†	14.518	226.652	3647.19	443.03	-437.85	-408.04	40°27'37.037"N	104°53'12.647"W	0.00	
3822.00†	14.518	226.652	3743.99	462.62	-455.06	-426.27	40°27'36.867"N	104°53'12.883"W	0.00	
3922.00†	14.518	226.652	3840.80	482.22	-472.27	-444.50	40°27'36.697"N	104°53'13.118"W	0.00	
4022.00†	14.518	226.652	3937.61	501.82	-489.48	-462.73	40°27'36.527"N	104°53'13.354"W	0.00	
4122.00†	14.518	226.652	4034.41	521.42	-506.68	-480.96	40°27'36.357"N	104°53'13.590"W	0.00	
4222.00†	14.518	226.652	4131.22	541.01	-523.89	-499.19	40°27'36.187"N	104°53'13.826"W	0.00	
4322.00†	14.518	226.652	4228.03	560.61	-541.10	-517.41	40°27'36.017"N	104°53'14.062"W	0.00	
4422.00†	14.518	226.652	4324.84	580.21	-558.31	-535.64	40°27'35.847"N	104°53'14.298"W	0.00	
4522.00†	14.518	226.652	4421.64	599.80	-575.52	-553.87	40°27'35.677"N	104°53'14.533"W	0.00	
4622.00†	14.518	226.652	4518.45	619.40	-592.72	-572.10	40°27'35.507"N	104°53'14.769"W	0.00	
4722.00†	14.518	226.652	4615.26	639.00	-609.93	-590.33	40°27'35.337"N	104°53'15.005"W	0.00	
4822.00†	14.518	226.652	4712.06	658.59	-627.14	-608.56	40°27'35.167"N	104°53'15.241"W	0.00	
4922.00†	14.518	226.652	4808.87	678.19	-644.35	-626.79	40°27'34.997"N	104°53'15.477"W	0.00	
5022.00†	14.518	226.652	4905.68	697.79	-661.55	-645.02	40°27'34.827"N	104°53'15.713"W	0.00	
5122.00†	14.518	226.652	5002.48	717.39	-678.76	-663.25	40°27'34.657"N	104°53'15.948"W	0.00	
5222.00†	14.518	226.652	5099.29	736.98	-695.97	-681.48	40°27'34.487"N	104°53'16.184"W	0.00	



Planned Wellpath Report

KODAK 10 PWP (REV-B.0)

Page 4 of 9



REFERENCE WELLPATH IDENTIFICATION			
Operator	EXTRACTION OIL & GAS	Slot	SLOT#06 KODAK 10 (1341'FNL & 1042'FWL, SEC.27)
Area	COLORADO	Well	KODAK 10
Field	WELD COUNTY (NAD83/TRUE NORTH)	Wellbore	KODAK 10 PWB
Facility	SEC.27-T06N-R67W		

WELLPATH DATA (179 stations) † = interpolated/extrapolated station										
MD [ft]	Inclination [°]	Azimuth [°]	TVD [ft]	Vert Sect [ft]	North [ft]	East [ft]	Latitude	Longitude	DLS [°/100ft]	Comments
5322.00†	14.518	226.652	5196.10	756.58	-713.18	-699.71	40°27'34.317"N	104°53'16.420"W	0.00	
5422.00†	14.518	226.652	5292.90	776.18	-730.38	-717.94	40°27'34.147"N	104°53'16.656"W	0.00	
5522.00†	14.518	226.652	5389.71	795.77	-747.59	-736.17	40°27'33.977"N	104°53'16.892"W	0.00	
5622.00†	14.518	226.652	5486.52	815.37	-764.80	-754.40	40°27'33.806"N	104°53'17.127"W	0.00	
5722.00†	14.518	226.652	5583.33	834.97	-782.01	-772.63	40°27'33.636"N	104°53'17.363"W	0.00	
5822.00†	14.518	226.652	5680.13	854.56	-799.22	-790.86	40°27'33.466"N	104°53'17.599"W	0.00	
5922.00†	14.518	226.652	5776.94	874.16	-816.42	-809.09	40°27'33.296"N	104°53'17.835"W	0.00	
6022.00†	14.518	226.652	5873.75	893.76	-833.63	-827.32	40°27'33.126"N	104°53'18.071"W	0.00	
6122.00†	14.518	226.652	5970.55	913.35	-850.84	-845.54	40°27'32.956"N	104°53'18.307"W	0.00	
6222.00†	14.518	226.652	6067.36	932.95	-868.05	-863.77	40°27'32.786"N	104°53'18.542"W	0.00	
6322.00†	14.518	226.652	6164.17	952.55	-885.25	-882.00	40°27'32.616"N	104°53'18.778"W	0.00	
6422.00†	14.518	226.652	6260.97	972.15	-902.46	-900.23	40°27'32.446"N	104°53'19.014"W	0.00	
6522.00†	14.518	226.652	6357.78	991.74	-919.67	-918.46	40°27'32.276"N	104°53'19.250"W	0.00	
6622.00†	14.518	226.652	6454.59	1011.34	-936.88	-936.69	40°27'32.106"N	104°53'19.486"W	0.00	
6646.01	14.518	226.652	6477.83	1016.04	-941.01	-941.07	40°27'32.065"N	104°53'19.542"W	0.00	End of Tangent
6722.00†	20.596	242.039	6550.29	1035.81	-953.83	-959.83	40°27'31.938"N	104°53'19.785"W	10.00	
6822.00†	29.650	252.209	6640.77	1076.17	-969.68	-999.02	40°27'31.782"N	104°53'20.292"W	10.00	
6922.00†	39.137	257.856	6723.22	1131.71	-983.91	-1053.56	40°27'31.641"N	104°53'20.998"W	10.00	
7022.00†	48.803	261.565	6795.11	1200.73	-996.10	-1121.80	40°27'31.521"N	104°53'21.880"W	10.00	
7122.00†	58.557	264.309	6854.28	1281.13	-1005.87	-1201.67	40°27'31.424"N	104°53'22.913"W	10.00	
7222.00†	68.359	266.529	6898.92	1370.48	-1012.93	-1290.73	40°27'31.354"N	104°53'24.066"W	10.00	
7322.00†	78.186	268.464	6927.66	1466.04	-1017.07	-1386.29	40°27'31.313"N	104°53'25.302"W	10.00	
7422.00†	88.026	270.264	6939.65	1564.94	-1018.15	-1485.43	40°27'31.303"N	104°53'26.584"W	10.00	
7442.06	90.000	270.619	6940.00 ¹	1584.91	-1018.00	-1505.49	40°27'31.304"N	104°53'26.844"W	10.00	End of 3D Arc
7522.00†	90.000	270.619	6940.00	1664.50	-1017.14	-1585.42	40°27'31.313"N	104°53'27.878"W	0.00	
7622.00†	90.000	270.619	6940.00	1764.05	-1016.06	-1685.42	40°27'31.323"N	104°53'29.172"W	0.00	
7722.00†	90.000	270.619	6940.00	1863.61	-1014.97	-1785.41	40°27'31.334"N	104°53'30.465"W	0.00	
7822.00†	90.000	270.619	6940.00	1963.17	-1013.89	-1885.40	40°27'31.344"N	104°53'31.759"W	0.00	
7922.00†	90.000	270.619	6940.00	2062.73	-1012.81	-1985.40	40°27'31.355"N	104°53'33.052"W	0.00	
8022.00†	90.000	270.619	6940.00	2162.29	-1011.73	-2085.39	40°27'31.366"N	104°53'34.346"W	0.00	



Planned Wellpath Report

KODAK 10 PWP (REV-B.0)

Page 5 of 9



REFERENCE WELLPATH IDENTIFICATION

Operator	EXTRACTION OIL & GAS	Slot	SLOT#06 KODAK 10 (1341'FNL & 1042'FWL, SEC.27)
Area	COLORADO	Well	KODAK 10
Field	WELD COUNTY (NAD83/TRUE NORTH)	Wellbore	KODAK 10 PWB
Facility	SEC.27-T06N-R67W		

WELLPATH DATA (179 stations) † = interpolated/extrapolated station

MD [ft]	Inclination [°]	Azimuth [°]	TVD [ft]	Vert Sect [ft]	North [ft]	East [ft]	Latitude	Longitude	DLS [°/100ft]	Comments
8122.00†	90.000	270.619	6940.00	2261.84	-1010.65	-2185.39	40°27'31.376"N	104°53'35.640"W	0.00	
8222.00†	90.000	270.619	6940.00	2361.40	-1009.57	-2285.38	40°27'31.387"N	104°53'36.933"W	0.00	
8322.00†	90.000	270.619	6940.00	2460.96	-1008.49	-2385.38	40°27'31.397"N	104°53'38.227"W	0.00	
8422.00†	90.000	270.619	6940.00	2560.52	-1007.41	-2485.37	40°27'31.408"N	104°53'39.520"W	0.00	
8522.00†	90.000	270.619	6940.00	2660.08	-1006.33	-2585.36	40°27'31.419"N	104°53'40.814"W	0.00	
8622.00†	90.000	270.619	6940.00	2759.64	-1005.25	-2685.36	40°27'31.429"N	104°53'42.107"W	0.00	
8722.00†	90.000	270.619	6940.00	2859.19	-1004.17	-2785.35	40°27'31.440"N	104°53'43.401"W	0.00	
8822.00†	90.000	270.619	6940.00	2958.75	-1003.08	-2885.35	40°27'31.450"N	104°53'44.695"W	0.00	
8922.00†	90.000	270.619	6940.00	3058.31	-1002.00	-2985.34	40°27'31.461"N	104°53'45.988"W	0.00	
9022.00†	90.000	270.619	6940.00	3157.87	-1000.92	-3085.33	40°27'31.471"N	104°53'47.282"W	0.00	
9122.00†	90.000	270.619	6940.00	3257.43	-999.84	-3185.33	40°27'31.482"N	104°53'48.575"W	0.00	
9222.00†	90.000	270.619	6940.00	3356.98	-998.76	-3285.32	40°27'31.493"N	104°53'49.869"W	0.00	
9322.00†	90.000	270.619	6940.00	3456.54	-997.68	-3385.32	40°27'31.503"N	104°53'51.163"W	0.00	
9422.00†	90.000	270.619	6940.00	3556.10	-996.60	-3485.31	40°27'31.514"N	104°53'52.456"W	0.00	
9522.00†	90.000	270.619	6940.00	3655.66	-995.52	-3585.31	40°27'31.524"N	104°53'53.750"W	0.00	
9622.00†	90.000	270.619	6940.00	3755.22	-994.44	-3685.30	40°27'31.535"N	104°53'55.043"W	0.00	
9722.00†	90.000	270.619	6940.00	3854.77	-993.36	-3785.29	40°27'31.545"N	104°53'56.337"W	0.00	
9822.00†	90.000	270.619	6940.00	3954.33	-992.28	-3885.29	40°27'31.556"N	104°53'57.631"W	0.00	
9922.00†	90.000	270.619	6940.00	4053.89	-991.19	-3985.28	40°27'31.566"N	104°53'58.924"W	0.00	
10022.00†	90.000	270.619	6940.00	4153.45	-990.11	-4085.28	40°27'31.577"N	104°54'00.218"W	0.00	
10122.00†	90.000	270.619	6940.00	4253.01	-989.03	-4185.27	40°27'31.587"N	104°54'01.511"W	0.00	
10222.00†	90.000	270.619	6940.00	4352.57	-987.95	-4285.26	40°27'31.598"N	104°54'02.805"W	0.00	
10322.00†	90.000	270.619	6940.00	4452.12	-986.87	-4385.26	40°27'31.608"N	104°54'04.098"W	0.00	
10422.00†	90.000	270.619	6940.00	4551.68	-985.79	-4485.25	40°27'31.619"N	104°54'05.392"W	0.00	
10522.00†	90.000	270.619	6940.00	4651.24	-984.71	-4585.25	40°27'31.629"N	104°54'06.686"W	0.00	
10622.00†	90.000	270.619	6940.00	4750.80	-983.63	-4685.24	40°27'31.640"N	104°54'07.979"W	0.00	
10722.00†	90.000	270.619	6940.00	4850.36	-982.55	-4785.24	40°27'31.650"N	104°54'09.273"W	0.00	
10822.00†	90.000	270.619	6940.00	4949.91	-981.47	-4885.23	40°27'31.661"N	104°54'10.566"W	0.00	
10922.00†	90.000	270.619	6940.00	5049.47	-980.39	-4985.22	40°27'31.671"N	104°54'11.860"W	0.00	
11022.00†	90.000	270.619	6940.00	5149.03	-979.30	-5085.22	40°27'31.682"N	104°54'13.154"W	0.00	



Planned Wellpath Report

KODAK 10 PWP (REV-B.0)

Page 6 of 9



REFERENCE WELLPATH IDENTIFICATION

Operator	EXTRACTION OIL & GAS	Slot	SLOT#06 KODAK 10 (1341'FNL & 1042'FWL, SEC.27)
Area	COLORADO	Well	KODAK 10
Field	WELD COUNTY (NAD83/TRUE NORTH)	Wellbore	KODAK 10 PWB
Facility	SEC.27-T06N-R67W		

WELLPATH DATA (179 stations) † = interpolated/extrapolated station

MD [ft]	Inclination [°]	Azimuth [°]	TVD [ft]	Vert Sect [ft]	North [ft]	East [ft]	Latitude	Longitude	DLS [°/100ft]	Comments
11122.00†	90.000	270.619	6940.00	5248.59	-978.22	-5185.21	40°27'31.692"N	104°54'14.447"W	0.00	
11222.00†	90.000	270.619	6940.00	5348.15	-977.14	-5285.21	40°27'31.703"N	104°54'15.741"W	0.00	
11322.00†	90.000	270.619	6940.00	5447.70	-976.06	-5385.20	40°27'31.713"N	104°54'17.034"W	0.00	
11422.00†	90.000	270.619	6940.00	5547.26	-974.98	-5485.19	40°27'31.724"N	104°54'18.328"W	0.00	
11522.00†	90.000	270.619	6940.00	5646.82	-973.90	-5585.19	40°27'31.734"N	104°54'19.622"W	0.00	
11622.00†	90.000	270.619	6940.00	5746.38	-972.82	-5685.18	40°27'31.745"N	104°54'20.915"W	0.00	
11722.00†	90.000	270.619	6940.00	5845.94	-971.74	-5785.18	40°27'31.755"N	104°54'22.209"W	0.00	
11822.00†	90.000	270.619	6940.00	5945.50	-970.66	-5885.17	40°27'31.765"N	104°54'23.502"W	0.00	
11922.00†	90.000	270.619	6940.00	6045.05	-969.58	-5985.17	40°27'31.776"N	104°54'24.796"W	0.00	
12022.00†	90.000	270.619	6940.00	6144.61	-968.50	-6085.16	40°27'31.786"N	104°54'26.090"W	0.00	
12122.00†	90.000	270.619	6940.00	6244.17	-967.41	-6185.15	40°27'31.797"N	104°54'27.383"W	0.00	
12222.00†	90.000	270.619	6940.00	6343.73	-966.33	-6285.15	40°27'31.807"N	104°54'28.677"W	0.00	
12322.00†	90.000	270.619	6940.00	6443.29	-965.25	-6385.14	40°27'31.818"N	104°54'29.970"W	0.00	
12422.00†	90.000	270.619	6940.00	6542.84	-964.17	-6485.14	40°27'31.828"N	104°54'31.264"W	0.00	
12522.00†	90.000	270.619	6940.00	6642.40	-963.09	-6585.13	40°27'31.838"N	104°54'32.557"W	0.00	
12622.00†	90.000	270.619	6940.00	6741.96	-962.01	-6685.12	40°27'31.849"N	104°54'33.851"W	0.00	
12722.00†	90.000	270.619	6940.00	6841.52	-960.93	-6785.12	40°27'31.859"N	104°54'35.145"W	0.00	
12822.00†	90.000	270.619	6940.00	6941.08	-959.85	-6885.11	40°27'31.870"N	104°54'36.438"W	0.00	
12922.00†	90.000	270.619	6940.00	7040.63	-958.77	-6985.11	40°27'31.880"N	104°54'37.732"W	0.00	
13022.00†	90.000	270.619	6940.00	7140.19	-957.69	-7085.10	40°27'31.891"N	104°54'39.025"W	0.00	
13122.00†	90.000	270.619	6940.00	7239.75	-956.61	-7185.10	40°27'31.901"N	104°54'40.319"W	0.00	
13222.00†	90.000	270.619	6940.00	7339.31	-955.53	-7285.09	40°27'31.911"N	104°54'41.613"W	0.00	
13322.00†	90.000	270.619	6940.00	7438.87	-954.44	-7385.08	40°27'31.922"N	104°54'42.906"W	0.00	
13422.00†	90.000	270.619	6940.00	7538.43	-953.36	-7485.08	40°27'31.932"N	104°54'44.200"W	0.00	
13522.00†	90.000	270.619	6940.00	7637.98	-952.28	-7585.07	40°27'31.942"N	104°54'45.493"W	0.00	
13622.00†	90.000	270.619	6940.00	7737.54	-951.20	-7685.07	40°27'31.953"N	104°54'46.787"W	0.00	
13722.00†	90.000	270.619	6940.00	7837.10	-950.12	-7785.06	40°27'31.963"N	104°54'48.081"W	0.00	
13822.00†	90.000	270.619	6940.00	7936.66	-949.04	-7885.05	40°27'31.974"N	104°54'49.374"W	0.00	
13922.00†	90.000	270.619	6940.00	8036.22	-947.96	-7985.05	40°27'31.984"N	104°54'50.668"W	0.00	
14022.00†	90.000	270.619	6940.00	8135.77	-946.88	-8085.04	40°27'31.994"N	104°54'51.961"W	0.00	



Planned Wellpath Report

KODAK 10 PWP (REV-B.0)

Page 7 of 9



REFERENCE WELLPATH IDENTIFICATION

Operator	EXTRACTION OIL & GAS	Slot	SLOT#06 KODAK 10 (1341'FNL & 1042'FWL, SEC.27)
Area	COLORADO	Well	KODAK 10
Field	WELD COUNTY (NAD83/TRUE NORTH)	Wellbore	KODAK 10 PWB
Facility	SEC.27-T06N-R67W		

WELLPATH DATA (179 stations) † = interpolated/extrapolated station

MD [ft]	Inclination [°]	Azimuth [°]	TVD [ft]	Vert Sect [ft]	North [ft]	East [ft]	Latitude	Longitude	DLS [°/100ft]	Comments
14122.00†	90.000	270.619	6940.00	8235.33	-945.80	-8185.04	40°27'32.005"N	104°54'53.255"W	0.00	
14222.00†	90.000	270.619	6940.00	8334.89	-944.72	-8285.03	40°27'32.015"N	104°54'54.549"W	0.00	
14322.00†	90.000	270.619	6940.00	8434.45	-943.64	-8385.02	40°27'32.025"N	104°54'55.842"W	0.00	
14422.00†	90.000	270.619	6940.00	8534.01	-942.55	-8485.02	40°27'32.036"N	104°54'57.136"W	0.00	
14522.00†	90.000	270.619	6940.00	8633.56	-941.47	-8585.01	40°27'32.046"N	104°54'58.429"W	0.00	
14622.00†	90.000	270.619	6940.00	8733.12	-940.39	-8685.01	40°27'32.056"N	104°54'59.723"W	0.00	
14722.00†	90.000	270.619	6940.00	8832.68	-939.31	-8785.00	40°27'32.067"N	104°55'01.017"W	0.00	
14822.00†	90.000	270.619	6940.00	8932.24	-938.23	-8885.00	40°27'32.077"N	104°55'02.310"W	0.00	
14922.00†	90.000	270.619	6940.00	9031.80	-937.15	-8984.99	40°27'32.087"N	104°55'03.604"W	0.00	
15022.00†	90.000	270.619	6940.00	9131.36	-936.07	-9084.98	40°27'32.098"N	104°55'04.897"W	0.00	
15122.00†	90.000	270.619	6940.00	9230.91	-934.99	-9184.98	40°27'32.108"N	104°55'06.191"W	0.00	
15222.00†	90.000	270.619	6940.00	9330.47	-933.91	-9284.97	40°27'32.118"N	104°55'07.485"W	0.00	
15322.00†	90.000	270.619	6940.00	9430.03	-932.83	-9384.97	40°27'32.129"N	104°55'08.778"W	0.00	
15422.00†	90.000	270.619	6940.00	9529.59	-931.75	-9484.96	40°27'32.139"N	104°55'10.072"W	0.00	
15522.00†	90.000	270.619	6940.00	9629.15	-930.66	-9584.95	40°27'32.149"N	104°55'11.365"W	0.00	
15622.00†	90.000	270.619	6940.00	9728.70	-929.58	-9684.95	40°27'32.160"N	104°55'12.659"W	0.00	
15722.00†	90.000	270.619	6940.00	9828.26	-928.50	-9784.94	40°27'32.170"N	104°55'13.952"W	0.00	
15822.00†	90.000	270.619	6940.00	9927.82	-927.42	-9884.94	40°27'32.180"N	104°55'15.246"W	0.00	
15922.00†	90.000	270.619	6940.00	10027.38	-926.34	-9984.93	40°27'32.190"N	104°55'16.540"W	0.00	
16022.00†	90.000	270.619	6940.00	10126.94	-925.26	-10084.93	40°27'32.201"N	104°55'17.833"W	0.00	
16122.00†	90.000	270.619	6940.00	10226.49	-924.18	-10184.92	40°27'32.211"N	104°55'19.127"W	0.00	
16222.00†	90.000	270.619	6940.00	10326.05	-923.10	-10284.91	40°27'32.221"N	104°55'20.420"W	0.00	
16322.00†	90.000	270.619	6940.00	10425.61	-922.02	-10384.91	40°27'32.231"N	104°55'21.714"W	0.00	
16422.00†	90.000	270.619	6940.00	10525.17	-920.94	-10484.90	40°27'32.242"N	104°55'23.008"W	0.00	
16522.00†	90.000	270.619	6940.00	10624.73	-919.86	-10584.90	40°27'32.252"N	104°55'24.301"W	0.00	
16622.00†	90.000	270.619	6940.00	10724.29	-918.77	-10684.89	40°27'32.262"N	104°55'25.595"W	0.00	
16722.00†	90.000	270.619	6940.00	10823.84	-917.69	-10784.88	40°27'32.272"N	104°55'26.888"W	0.00	
16822.00†	90.000	270.619	6940.00	10923.40	-916.61	-10884.88	40°27'32.283"N	104°55'28.182"W	0.00	
16912.44	90.000	270.619	6940.00 ²	11013.44	-915.64	-10975.31	40°27'32.292"N	104°55'29.352"W	0.00	End of Tangent



Planned Wellpath Report

KODAK 10 PWP (REV-B.0)

Page 8 of 9



REFERENCE WELLPATH IDENTIFICATION			
Operator	EXTRACTION OIL & GAS	Slot	SLOT#06 KODAK 10 (1341'FNL & 1042'FWL, SEC.27)
Area	COLORADO	Well	KODAK 10
Field	WELD COUNTY (NAD83/TRUE NORTH)	Wellbore	KODAK 10 PWB
Facility	SEC.27-T06N-R67W		

HOLE & CASING SECTIONS - Ref Wellbore: KODAK 10 PWB Ref Wellpath: KODAK 10 PWP (REV-B.0)									
String/Diameter	Start MD [ft]	End MD [ft]	Interval [ft]	Start TVD [ft]	End TVD [ft]	Start N/S [ft]	Start E/W [ft]	End N/S [ft]	End E/W [ft]
7in Casing Intermediate	22.00	7442.06	7420.06	22.00	6940.00	0.00	0.00	-1018.00	-1505.49

TARGETS									
Name	MD [ft]	TVD [ft]	North [ft]	East [ft]	Grid East [US ft]	Grid North [US ft]	Latitude	Longitude	Shape
SEC.27-T6N-R67W		0.00	109.29	0.00	3171020.64	1411663.14	40°27'42.444"N	104°53'07.368"W	polygon
SEC.28-T6N-R67W		0.00	109.29	0.00	3171020.64	1411663.14	40°27'42.444"N	104°53'07.368"W	polygon
SEC.29-T6N-R67W		0.00	109.29	0.00	3171020.64	1411663.14	40°27'42.444"N	104°53'07.368"W	polygon
2) KODAK 10 BHL ON PLAT REV-2 (2207'FNL & 460'FWL, SEC.29)	16912.44	6940.00	-915.64	-10975.31	3160053.12	1410562.21	40°27'32.292"N	104°55'29.352"W	point
KODAK 10 DRILLING CORRIDOR (60')		6940.00	0.00	0.00	3171021.40	1411553.85	40°27'41.364"N	104°53'07.368"W	polygon
1) KODAK 10 LANDING POINT REV-2	7442.06	6940.00	-1018.00	-1505.49	3169523.06	1410525.48	40°27'31.304"N	104°53'26.844"W	point

SURVEY PROGRAM - Ref Wellbore: KODAK 10 PWB Ref Wellpath: KODAK 10 PWP (REV-B.0)				
Start MD [ft]	End MD [ft]	Positional Uncertainty Model	Log Name/Comment	Wellbore
22.00	17000.00	NaviTrak (Standard)		KODAK 10 PWB



Planned Wellpath Report

KODAK 10 PWP (REV-B.0)

Page 9 of 9



REFERENCE WELLPATH IDENTIFICATION

Operator	EXTRACTION OIL & GAS	Slot	SLOT#06 KODAK 10 (1341'FNL & 1042'FWL, SEC.27)
Area	COLORADO	Well	KODAK 10
Field	WELD COUNTY (NAD83/TRUE NORTH)	Wellbore	KODAK 10 PWB
Facility	SEC.27-T06N-R67W		

DESIGN COMMENTS

MD [ft]	Inclination [°]	Azimuth [°]	TVD [ft]	Comment
22.00	0.000	90.000	22.00	Tie On
200.00	0.000	90.000	200.00	End of Tangent
266.67	2.000	90.000	266.65	End of Build
850.37	2.000	90.000	850.00	End of Tangent
999.42	4.000	180.000	998.90	End of 3D Arc
1049.42	4.000	180.000	1048.77	End of Tangent
1655.35	14.518	226.652	1646.53	End of 3D Arc
6646.01	14.518	226.652	6477.83	End of Tangent
7442.06	90.000	270.619	6940.00	End of 3D Arc
16912.44	90.000	270.619	6940.00	End of Tangent