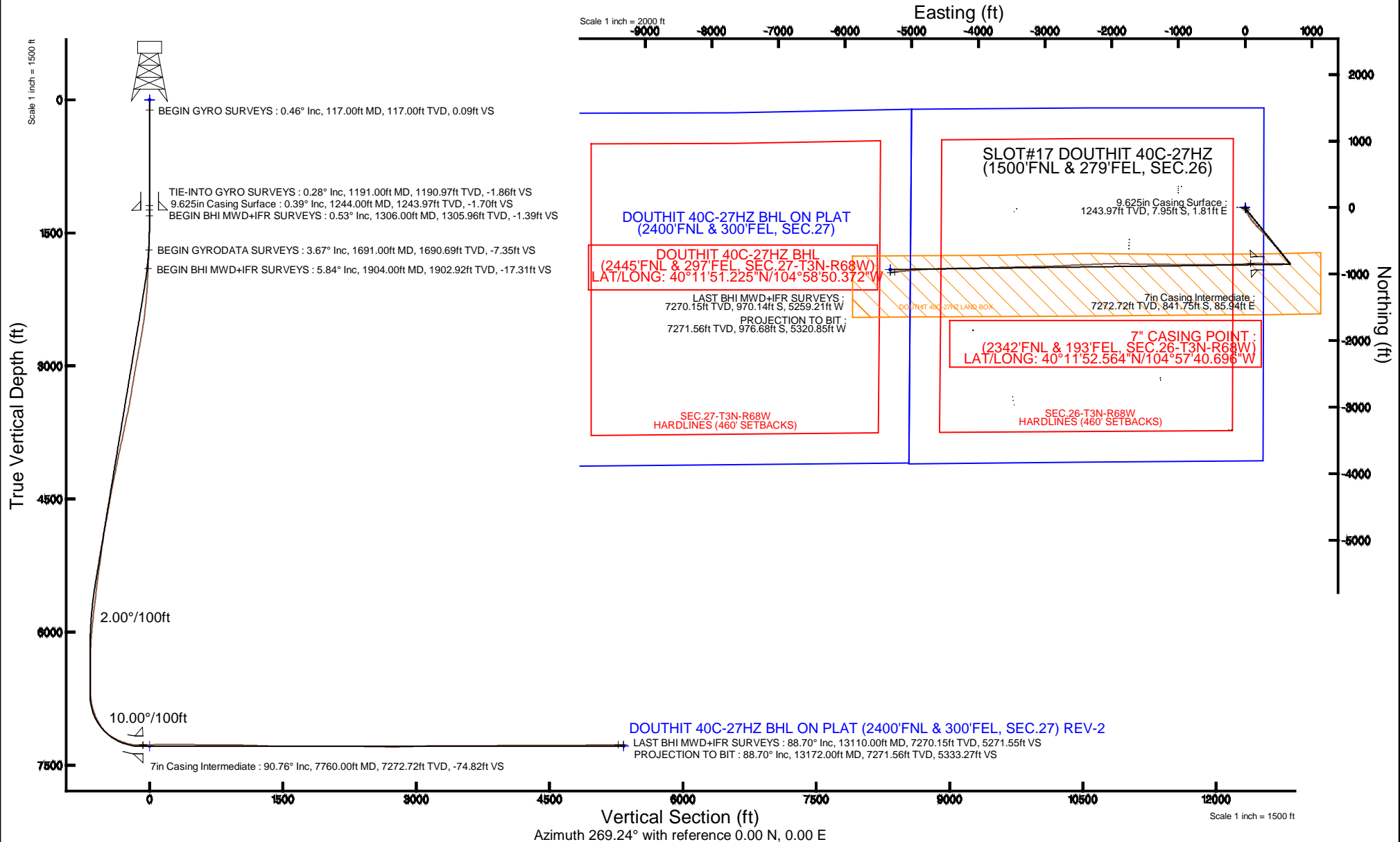


KERR-MCGEE OIL & GAS ONSHORE LP

Location: COLORADO Slot: SLOT#17 DOUTHIT 40C-27HZ (1500'FNL & 279'FEL, SEC.26)
 Field: WELD COUNTY (KERR MCGEE) Well: DOUTHIT 40C-27HZ
 Facility: SEC.26-T3N-R68W Wellbore: DOUTHIT 40C-27HZ PWB

Plot reference wellpath is DOUTHIT 40C-27HZ (REV-C.0) PWB

True vertical depths are referenced to XTREME 8 (17KB) (RKB)	Grid System: NAD83 / Lambert Colorado SP, Northern Zone (501), US feet
Measured depths are referenced to XTREME 8 (17KB) (RKB)	North Reference: True north
XTREME 8 (17KB) (RKB) to Mean Sea Level: 4959 feet	Scale: True distance
Mean Sea Level to Mud line (At Slot: SLOT#17 DOUTHIT 40C-27HZ (1500'FNL & 279'FEL, SEC.26)): 0 feet	Depths are in feet
Coordinates are in feet referenced to Slot	Created by: amarc on 11/3/2014



Actual Wellpath Report

DOUTHIT 40C-27HZ AWP

Page 1 of 7

REFERENCE WELLPATH IDENTIFICATION

Operator	KERR-MCGEE OIL & GAS ONSHORE LP	Slot	SLOT#17 DOUTHIT 40C-27HZ (1500'FNL & 279'FEL, SEC.26)
Area	COLORADO	Well	DOUTHIT 40C-27HZ
Field	WELD COUNTY (KERR MCGEE)	Wellbore	DOUTHIT 40C-27HZ AWB
Facility	SEC.26-T3N-R68W		

REPORT SETUP INFORMATION

Projection System	NAD83 / Lambert Colorado SP, Northern Zone (501), US feet	Software System	WellArchitect® 4.0.0
North Reference	True	User	Amarcar
Scale	0.999957	Report Generated	11/3/2014 at 8:59:02 AM
Convergence at slot	n/a	Database/Source file	WellArchitectDB/DOUTHIT_40C-27HZ_AWB.xml

WELLPATH LOCATION

	Local coordinates		Grid coordinates		Geographic coordinates	
	North[ft]	East[ft]	Easting[US ft]	Northing[US ft]	Latitude	Longitude
Slot Location	2854.53	3488.46	3150387.54	1316248.25	40°12'00.882"N	104°57'41.803"W
Facility Reference Pt			3146916.23	1313373.21	40°11'32.676"N	104°58'26.760"W
Field Reference Pt			3197771.84	1268891.29	40°04'09.600"N	104°47'36.000"W

WELLPATH DATUM

Calculation method	Minimum curvature	XTREME 8 (17'KB) (RKB) to Facility Vertical Datum	4959.00ft
Horizontal Reference Pt	Slot	XTREME 8 (17'KB) (RKB) to Mean Sea Level	4959.00ft
Vertical Reference Pt	XTREME 8 (17'KB) (RKB)	XTREME 8 (17'KB) (RKB) to Mud Line at Slot (SLOT#17 DOUTHIT 40C-27HZ (1500'FNL & 279'FEL, SEC.26))	4959.00ft
MD Reference Pt	XTREME 8 (17'KB) (RKB)	Section Origin	N 0.00, E 0.00 ft
Field Vertical Reference	Mean Sea Level	Section Azimuth	269.24°

REFERENCE WELLPATH IDENTIFICATION			
Operator	KERR-MCGEE OIL & GAS ONSHORE LP	Slot	SLOT#17 DOUTHIT 40C-27HZ (1500'FNL & 279'FEL, SEC.26)
Area	COLORADO	Well	DOUTHIT 40C-27HZ
Field	WELD COUNTY (KERR MCGEE)	Wellbore	DOUTHIT 40C-27HZ AWB
Facility	SEC.26-T3N-R68W		

WELLPATH DATA (141 stations) † = interpolated/extrapolated station										
MD [ft]	Inclination [°]	Azimuth [°]	TVD [ft]	Vert Sect [ft]	North [ft]	East [ft]	Latitude	Longitude	DLS [°/100ft]	Comments
0.00†	0.000	192.000	0.00	0.00	0.00	0.00	40°12'00.882"N	104°57'41.803"W	0.00	
17.00	0.000	192.000	17.00	0.00	0.00	0.00	40°12'00.882"N	104°57'41.803"W	0.00	
117.00	0.460	192.000	117.00	0.09	-0.39	-0.08	40°12'00.878"N	104°57'41.804"W	0.46	BEGIN GYRO SURVEYS
217.00	0.540	186.580	217.00	0.24	-1.25	-0.22	40°12'00.870"N	104°57'41.806"W	0.09	
317.00	0.360	183.010	316.99	0.32	-2.04	-0.29	40°12'00.862"N	104°57'41.807"W	0.18	
417.00	0.610	161.900	416.99	0.18	-2.85	-0.14	40°12'00.854"N	104°57'41.805"W	0.30	
517.00	0.530	157.680	516.98	-0.15	-3.79	0.20	40°12'00.845"N	104°57'41.800"W	0.09	
617.00	0.550	164.380	616.98	-0.44	-4.68	0.50	40°12'00.836"N	104°57'41.797"W	0.07	
717.00	0.530	140.820	716.97	-0.85	-5.50	0.92	40°12'00.828"N	104°57'41.791"W	0.22	
817.00	0.340	157.220	816.97	-1.25	-6.13	1.33	40°12'00.821"N	104°57'41.786"W	0.23	
917.00	0.380	160.960	916.97	-1.47	-6.72	1.55	40°12'00.816"N	104°57'41.783"W	0.05	
1017.00	0.350	148.990	1016.97	-1.72	-7.29	1.82	40°12'00.810"N	104°57'41.780"W	0.08	
1117.00	0.050	60.910	1116.97	-1.92	-7.53	2.02	40°12'00.808"N	104°57'41.777"W	0.35	
1191.00	0.280	205.530	1190.97	-1.86	-7.68	1.97	40°12'00.806"N	104°57'41.778"W	0.44	TIE-INTO GYRO SURVEYS
1306.00	0.530	221.090	1305.96	-1.39	-8.34	1.50	40°12'00.800"N	104°57'41.784"W	0.24	BEGIN BHI MWD+IFR SURVEYS
1397.00	1.000	174.020	1396.96	-1.18	-9.44	1.30	40°12'00.789"N	104°57'41.786"W	0.82	
1489.00	1.800	150.110	1488.93	-1.95	-11.49	2.11	40°12'00.768"N	104°57'41.776"W	1.06	
1599.00	2.830	148.780	1598.84	-4.17	-15.31	4.37	40°12'00.731"N	104°57'41.747"W	0.94	
1691.00	3.670	135.790	1690.69	-7.35	-19.37	7.60	40°12'00.691"N	104°57'41.705"W	1.21	BEGIN GYRODATA SURVEYS
1782.00	5.020	150.140	1781.43	-11.29	-24.91	11.62	40°12'00.636"N	104°57'41.653"W	1.89	
1842.00	5.050	149.280	1841.20	-13.88	-29.46	14.27	40°12'00.591"N	104°57'41.619"W	0.14	
1904.00	5.840	138.490	1902.92	-17.31	-34.16	17.76	40°12'00.544"N	104°57'41.574"W	2.08	BEGIN BHI MWD+IFR SURVEYS
1935.00	6.170	150.620	1933.75	-19.13	-36.80	19.62	40°12'00.518"N	104°57'41.550"W	4.22	
1965.00	6.760	157.860	1963.56	-20.55	-39.84	21.08	40°12'00.488"N	104°57'41.531"W	3.35	
1996.00	7.420	162.680	1994.32	-21.79	-43.44	22.36	40°12'00.453"N	104°57'41.515"W	2.86	
2027.00	8.770	168.340	2025.01	-22.80	-47.66	23.43	40°12'00.411"N	104°57'41.501"W	5.05	
2057.00	9.900	166.790	2054.62	-23.79	-52.41	24.49	40°12'00.364"N	104°57'41.487"W	3.86	
2088.00	10.080	162.330	2085.15	-25.16	-57.59	25.92	40°12'00.313"N	104°57'41.469"W	2.56	
2149.00	11.820	159.860	2145.03	-28.78	-68.55	29.69	40°12'00.205"N	104°57'41.420"W	2.95	
2241.00	13.130	155.780	2234.86	-36.07	-86.92	37.22	40°12'00.023"N	104°57'41.323"W	1.72	
2333.00	13.750	153.080	2324.34	-45.05	-106.20	46.46	40°11'59.833"N	104°57'41.204"W	0.96	
2424.00	14.580	150.580	2412.58	-55.32	-125.82	56.98	40°11'59.639"N	104°57'41.069"W	1.13	
2516.00	16.210	151.510	2501.27	-66.85	-147.20	68.80	40°11'59.427"N	104°57'40.916"W	1.79	
2608.00	17.400	146.580	2589.35	-80.25	-169.97	82.50	40°11'59.202"N	104°57'40.740"W	2.02	
2700.00	16.160	142.563	2677.43	-95.32	-191.61	97.86	40°11'58.988"N	104°57'40.542"W	1.84	
2791.00	14.930	136.790	2765.10	-110.80	-210.22	113.58	40°11'58.805"N	104°57'40.339"W	2.17	
2883.00	15.800	137.730	2853.82	-127.10	-228.12	130.12	40°11'58.628"N	104°57'40.126"W	0.98	
2975.00	16.110	139.280	2942.27	-143.60	-247.06	146.88	40°11'58.441"N	104°57'39.910"W	0.57	
3067.00	15.080	137.170	3030.88	-159.82	-265.52	163.34	40°11'58.258"N	104°57'39.698"W	1.28	
3158.00	14.450	137.030	3118.88	-175.38	-282.51	179.13	40°11'58.090"N	104°57'39.495"W	0.69	
3250.00	13.810	138.510	3208.10	-190.26	-299.13	194.22	40°11'57.926"N	104°57'39.300"W	0.80	
3342.00	13.520	138.570	3297.49	-204.43	-315.42	208.61	40°11'57.765"N	104°57'39.115"W	0.32	
3427.00	12.850	135.880	3380.25	-217.40	-329.65	221.77	40°11'57.624"N	104°57'38.945"W	1.07	
3512.00	15.680	132.400	3462.62	-232.27	-344.19	236.84	40°11'57.481"N	104°57'38.751"W	3.48	
3597.00	17.510	133.000	3544.08	-249.89	-360.65	254.67	40°11'57.318"N	104°57'38.521"W	2.16	

REFERENCE WELLPATH IDENTIFICATION			
Operator	KERR-MCGEE OIL & GAS ONSHORE LP	Slot	SLOT#17 DOUTHIT 40C-27HZ (1500'FNL & 279'FEL, SEC.26)
Area	COLORADO	Well	DOUTHIT 40C-27HZ
Field	WELD COUNTY (KERR MCGEE)	Wellbore	DOUTHIT 40C-27HZ AWB
Facility	SEC.26-T3N-R68W		

WELLPATH DATA (141 stations)										
MD [ft]	Inclination [°]	Azimuth [°]	TVD [ft]	Vert Sect [ft]	North [ft]	East [ft]	Latitude	Longitude	DLS [°/100ft]	Comments
3682.00	15.790	132.960	3625.51	-267.49	-377.26	272.49	40°11'57.154"N	104°57'38.291"W	2.02	
3767.00	16.080	134.560	3707.25	-284.12	-393.40	289.34	40°11'56.994"N	104°57'38.074"W	0.62	
3853.00	17.930	138.430	3789.49	-301.15	-411.66	306.61	40°11'56.814"N	104°57'37.852"W	2.52	
3938.00	19.950	140.410	3869.88	-318.80	-432.63	324.54	40°11'56.607"N	104°57'37.621"W	2.49	
4023.00	18.110	139.680	3950.23	-336.31	-453.88	342.33	40°11'56.397"N	104°57'37.391"W	2.18	
4111.00	16.820	136.330	4034.18	-353.69	-473.51	359.97	40°11'56.203"N	104°57'37.164"W	1.86	
4195.00	16.010	136.620	4114.75	-369.81	-490.73	376.32	40°11'56.033"N	104°57'36.953"W	0.97	
4283.00	16.710	137.030	4199.19	-386.53	-508.80	393.28	40°11'55.854"N	104°57'36.735"W	0.81	
4368.00	18.270	139.940	4280.26	-403.18	-527.94	410.18	40°11'55.665"N	104°57'36.517"W	2.10	
4453.00	17.330	141.110	4361.19	-419.44	-547.99	426.70	40°11'55.467"N	104°57'36.304"W	1.18	
4540.00	15.070	140.520	4444.73	-434.52	-566.81	442.03	40°11'55.281"N	104°57'36.106"W	2.60	
4626.00	14.100	138.060	4527.96	-448.41	-583.23	456.14	40°11'55.118"N	104°57'35.925"W	1.34	
4711.00	15.120	138.440	4610.21	-462.47	-599.23	470.42	40°11'54.960"N	104°57'35.741"W	1.21	
4796.00	16.330	138.710	4692.02	-477.48	-616.51	485.66	40°11'54.790"N	104°57'35.544"W	1.43	
4884.00	17.130	142.110	4776.30	-493.35	-636.03	501.78	40°11'54.597"N	104°57'35.337"W	1.44	
4969.00	15.660	142.790	4857.84	-507.72	-655.05	516.41	40°11'54.409"N	104°57'35.148"W	1.74	
5056.00	13.080	141.910	4942.11	-520.67	-672.15	529.58	40°11'54.240"N	104°57'34.978"W	2.98	
5142.00	12.330	142.290	5026.01	-532.09	-687.07	541.20	40°11'54.092"N	104°57'34.829"W	0.88	
5227.00	12.100	139.970	5109.08	-543.19	-701.07	552.48	40°11'53.954"N	104°57'34.683"W	0.64	
5312.00	12.540	139.650	5192.12	-554.71	-714.93	564.19	40°11'53.817"N	104°57'34.532"W	0.52	
5400.00	12.580	138.910	5278.02	-567.00	-729.43	576.67	40°11'53.674"N	104°57'34.371"W	0.19	
5485.00	12.890	142.780	5360.93	-578.62	-743.96	588.49	40°11'53.530"N	104°57'34.219"W	1.07	
5570.00	12.500	144.210	5443.85	-589.54	-758.97	599.61	40°11'53.382"N	104°57'34.076"W	0.59	
5655.00	10.610	143.840	5527.12	-599.35	-772.75	609.60	40°11'53.246"N	104°57'33.947"W	2.23	
5741.00	11.030	143.520	5611.60	-608.75	-785.76	619.17	40°11'53.117"N	104°57'33.824"W	0.49	
5826.00	10.970	141.940	5695.03	-618.39	-798.66	628.99	40°11'52.990"N	104°57'33.697"W	0.36	
5913.00	10.540	137.990	5780.51	-628.66	-811.09	639.42	40°11'52.867"N	104°57'33.563"W	0.98	
5999.00	8.820	136.100	5865.28	-638.35	-821.69	649.25	40°11'52.762"N	104°57'33.436"W	2.03	
6084.00	7.200	137.180	5949.45	-646.38	-830.29	657.39	40°11'52.677"N	104°57'33.331"W	1.91	
6169.00	6.110	136.600	6033.87	-653.01	-837.49	664.12	40°11'52.606"N	104°57'33.245"W	1.28	
6255.00	4.780	135.210	6119.48	-658.60	-843.36	669.79	40°11'52.548"N	104°57'33.171"W	1.55	
6340.00	3.090	142.240	6204.28	-662.45	-847.68	673.69	40°11'52.505"N	104°57'33.121"W	2.06	
6425.00	1.930	151.160	6289.20	-664.50	-850.75	675.78	40°11'52.475"N	104°57'33.094"W	1.44	
6510.00	1.160	188.320	6374.17	-665.04	-852.85	676.35	40°11'52.454"N	104°57'33.087"W	1.44	
6596.00	0.370	249.220	6460.16	-664.64	-853.81	675.96	40°11'52.445"N	104°57'33.092"W	1.20	
6768.00	0.120	162.530	6632.16	-664.17	-854.18	675.50	40°11'52.441"N	104°57'33.098"W	0.22	
6811.00	0.850	267.680	6675.16	-663.86	-854.24	675.19	40°11'52.440"N	104°57'33.102"W	2.07	
6853.00	3.660	270.270	6717.12	-662.21	-854.24	673.54	40°11'52.440"N	104°57'33.123"W	6.69	
6897.00	6.990	271.930	6760.93	-658.13	-854.15	669.46	40°11'52.441"N	104°57'33.176"W	7.58	
6941.00	10.570	272.240	6804.40	-651.42	-853.90	662.75	40°11'52.444"N	104°57'33.262"W	8.14	
6983.00	14.300	274.050	6845.41	-642.40	-853.38	653.72	40°11'52.449"N	104°57'33.379"W	8.93	
7026.00	17.160	274.440	6886.80	-630.79	-852.51	642.10	40°11'52.457"N	104°57'33.528"W	6.66	
7111.00	24.680	275.640	6966.14	-600.63	-849.79	611.89	40°11'52.484"N	104°57'33.918"W	8.86	
7154.00	29.130	275.570	7004.47	-581.29	-847.90	592.53	40°11'52.503"N	104°57'34.167"W	10.35	
7196.00	32.350	274.390	7040.57	-559.94	-846.04	571.15	40°11'52.521"N	104°57'34.443"W	7.80	

REFERENCE WELLPATH IDENTIFICATION			
Operator	KERR-MCGEE OIL & GAS ONSHORE LP	Slot	SLOT#17 DOUTHIT 40C-27HZ (1500'FNL & 279'FEL, SEC.26)
Area	COLORADO	Well	DOUTHIT 40C-27HZ
Field	WELD COUNTY (KERR MCGEE)	Wellbore	DOUTHIT 40C-27HZ AWB
Facility	SEC.26-T3N-R68W		

WELLPATH DATA (141 stations) † = interpolated/extrapolated station										
MD [ft]	Inclination [°]	Azimuth [°]	TVD [ft]	Vert Sect [ft]	North [ft]	East [ft]	Latitude	Longitude	DLS [°/100ft]	Comments
7281.00	40.230	273.460	7109.03	-509.83	-842.64	520.99	40°11'52.555"N	104°57'35.089"W	9.29	
7325.00	48.030	271.200	7140.58	-479.26	-841.44	490.41	40°11'52.567"N	104°57'35.483"W	18.08	
7368.00	56.040	269.340	7167.02	-445.40	-841.31	456.54	40°11'52.568"N	104°57'35.920"W	18.94	
7411.00	60.890	269.030	7189.50	-408.76	-841.83	419.90	40°11'52.563"N	104°57'36.392"W	11.30	
7454.00	64.380	269.470	7209.26	-370.58	-842.33	381.73	40°11'52.558"N	104°57'36.884"W	8.17	
7497.00	68.050	270.380	7226.60	-331.24	-842.38	342.38	40°11'52.558"N	104°57'37.391"W	8.75	
7541.00	70.100	271.510	7242.32	-290.16	-841.70	301.30	40°11'52.564"N	104°57'37.920"W	5.24	
7584.00	74.640	271.950	7255.34	-249.23	-840.46	260.34	40°11'52.577"N	104°57'38.448"W	10.60	
7626.00	79.750	270.690	7264.64	-208.32	-839.52	219.41	40°11'52.586"N	104°57'38.975"W	12.51	
7712.00	89.380	268.490	7272.78	-122.81	-840.14	133.91	40°11'52.580"N	104°57'40.077"W	11.48	
7760.00†	90.757	267.681	7272.72	-74.82	-841.75	85.94	40°11'52.564"N	104°57'40.696"W	3.33	7" CASING POINT
7833.00	92.850	266.450	7270.42	-1.92	-845.48	13.08	40°11'52.527"N	104°57'41.635"W	3.33	
7920.00	92.490	267.140	7266.37	84.91	-850.34	-73.69	40°11'52.479"N	104°57'42.753"W	0.89	
8093.00	89.250	268.520	7263.75	257.81	-856.89	-246.52	40°11'52.414"N	104°57'44.980"W	2.04	
8178.00	89.750	269.390	7264.49	342.80	-858.44	-331.50	40°11'52.399"N	104°57'46.075"W	1.18	
8266.00	88.450	269.410	7265.87	430.79	-859.36	-419.49	40°11'52.390"N	104°57'47.209"W	1.48	
8351.00	88.110	270.430	7268.42	515.74	-859.48	-504.45	40°11'52.389"N	104°57'48.304"W	1.26	
8436.00	89.470	270.030	7270.22	600.71	-859.14	-589.43	40°11'52.392"N	104°57'49.399"W	1.67	
8609.00	89.870	270.450	7271.21	773.68	-858.41	-762.42	40°11'52.399"N	104°57'51.628"W	0.34	
8694.00	90.240	270.380	7271.13	858.66	-857.80	-847.42	40°11'52.405"N	104°57'52.724"W	0.44	
8779.00	89.340	270.640	7271.44	943.64	-857.04	-932.41	40°11'52.413"N	104°57'53.819"W	1.10	
8864.00	89.070	270.880	7272.62	1028.60	-855.91	-1017.40	40°11'52.424"N	104°57'54.914"W	0.42	
9035.00	87.680	271.240	7277.47	1199.44	-852.75	-1188.29	40°11'52.455"N	104°57'57.116"W	0.84	
9119.00	87.250	271.740	7281.19	1283.30	-850.57	-1272.18	40°11'52.476"N	104°57'58.198"W	0.78	
9207.00	88.950	270.320	7284.10	1371.20	-848.99	-1360.12	40°11'52.492"N	104°57'59.331"W	2.52	
9296.00	89.410	269.040	7285.38	1460.19	-849.49	-1449.10	40°11'52.487"N	104°58'00.477"W	1.53	
9474.00	90.120	270.780	7286.11	1638.16	-849.77	-1627.09	40°11'52.484"N	104°58'02.771"W	1.06	
9652.00	89.350	271.760	7286.93	1816.05	-845.82	-1805.04	40°11'52.523"N	104°58'05.064"W	0.70	
9738.00	90.950	271.130	7286.71	1901.98	-843.65	-1891.01	40°11'52.544"N	104°58'06.172"W	2.00	
9825.00	90.150	269.500	7285.87	1988.96	-843.17	-1978.00	40°11'52.549"N	104°58'07.293"W	2.09	
10003.00	89.840	267.570	7285.89	2166.93	-847.72	-2155.94	40°11'52.504"N	104°58'09.586"W	1.10	
10181.00	89.380	267.650	7287.10	2344.86	-855.15	-2333.78	40°11'52.430"N	104°58'11.878"W	0.26	
10359.00	88.490	268.090	7290.41	2522.77	-861.76	-2511.62	40°11'52.365"N	104°58'14.170"W	0.56	
10448.00	88.830	266.070	7292.49	2611.68	-866.29	-2600.48	40°11'52.320"N	104°58'15.315"W	2.30	
10535.00	89.410	266.130	7293.82	2698.54	-872.21	-2687.27	40°11'52.261"N	104°58'16.434"W	0.67	
10710.00	92.270	268.420	7291.26	2873.39	-880.53	-2862.02	40°11'52.179"N	104°58'18.686"W	2.09	
10797.00	91.870	268.600	7288.12	2960.32	-882.79	-2948.93	40°11'52.157"N	104°58'19.806"W	0.50	
10970.00	91.810	269.260	7282.56	3133.23	-886.02	-3121.81	40°11'52.124"N	104°58'22.033"W	0.38	
11141.00	90.090	268.530	7279.73	3304.20	-889.32	-3292.75	40°11'52.092"N	104°58'24.236"W	1.09	
11226.00	89.590	268.240	7279.96	3389.19	-891.71	-3377.71	40°11'52.068"N	104°58'25.331"W	0.68	
11396.00	90.520	268.340	7279.80	3559.16	-896.79	-3547.64	40°11'52.017"N	104°58'27.521"W	0.55	
11567.00	89.720	268.190	7279.44	3730.13	-901.96	-3718.56	40°11'51.966"N	104°58'29.724"W	0.48	
11737.00	91.130	268.990	7278.18	3900.11	-906.15	-3888.50	40°11'51.924"N	104°58'31.914"W	0.95	
11825.00	90.580	268.970	7276.87	3988.10	-907.71	-3976.47	40°11'51.909"N	104°58'33.047"W	0.63	
11998.00	90.520	268.910	7275.21	4161.09	-910.91	-4149.43	40°11'51.877"N	104°58'35.276"W	0.05	

Actual Wellpath Report

DOUTHIT 40C-27HZ AWP

Page 5 of 7

REFERENCE WELLPATH IDENTIFICATION

Operator	KERR-MCGEE OIL & GAS ONSHORE LP	Slot	SLOT#17 DOUTHIT 40C-27HZ (1500'FNL & 279'FEL, SEC.26)
Area	COLORADO	Well	DOUTHIT 40C-27HZ
Field	WELD COUNTY (KERR MCGEE)	Wellbore	DOUTHIT 40C-27HZ AWB
Facility	SEC.26-T3N-R68W		

WELLPATH DATA (141 stations)

MD [ft]	Inclination [°]	Azimuth [°]	TVD [ft]	Vert Sect [ft]	North [ft]	East [ft]	Latitude	Longitude	DLS [°/100ft]	Comments
12170.00	90.270	268.910	7274.02	4333.08	-914.18	-4321.40	40°11'51.844"N	104°58'37.492"W	0.15	
12428.00	89.260	268.560	7275.08	4591.07	-919.88	-4579.33	40°11'51.788"N	104°58'40.816"W	0.41	
12599.00	90.150	266.480	7275.96	4761.98	-927.28	-4750.16	40°11'51.714"N	104°58'43.018"W	1.32	
12769.00	92.120	265.590	7272.59	4931.67	-939.03	-4919.71	40°11'51.598"N	104°58'45.203"W	1.27	
13110.00	88.700	263.940	7270.15	5271.55	-970.14	-5259.21	40°11'51.290"N	104°58'49.578"W	1.11	LAST BHI MWD+IFR SURVEYS
13172.00	88.700	263.940	7271.56	5333.27	-976.68	-5320.85	40°11'51.225"N	104°58'50.372"W	0.00	PROJECTION TO BIT

HOLE & CASING SECTIONS - Ref Wellbore: DOUTHIT 40C-27HZ AWB Ref Wellpath: DOUTHIT 40C-27HZ AWP

String/Diameter	Start MD [ft]	End MD [ft]	Interval [ft]	Start TVD [ft]	End TVD [ft]	Start N/S [ft]	Start E/W [ft]	End N/S [ft]	End E/W [ft]
13.5in Open Hole	17.00	1254.00	1237.00	17.00	1253.97	0.00	0.00	-8.00	1.76
9.625in Casing Surface	17.00	1244.00	1227.00	17.00	1243.97	0.00	0.00	-7.95	1.81
8.75in Open Hole	1254.00	7770.00	6516.00	1253.97	7272.56	-8.00	1.76	-842.17	75.95
7in Casing Intermediate	17.00	7760.00	7743.00	17.00	7272.72	0.00	0.00	-841.75	85.94
6.125in Open Hole	7770.00	13172.00	5402.00	7272.56	7271.56	-842.17	75.95	-976.68	-5320.85

REFERENCE WELLPATH IDENTIFICATION

Operator	KERR-MCGEE OIL & GAS ONSHORE LP	Slot	SLOT#17 DOUTHIT 40C-27HZ (1500'FNL & 279'FEL, SEC.26)
Area	COLORADO	Well	DOUTHIT 40C-27HZ
Field	WELD COUNTY (KERR MCGEE)	Wellbore	DOUTHIT 40C-27HZ AWB
Facility	SEC.26-T3N-R68W		

TARGETS

Name	MD [ft]	TVD [ft]	North [ft]	East [ft]	Grid East [US ft]	Grid North [US ft]	Latitude	Longitude	Shape
SEC.26-T3N-R68W HARDLINES (460' SETBACKS)		0.00	0.00	0.00	3150387.54	1316248.25	40°12'00.882"N	104°57'41.803"W	polygon
SEC.26-T3N-R68W SECTION LINES		0.00	0.00	0.00	3150387.54	1316248.25	40°12'00.882"N	104°57'41.803"W	polygon
SEC.27-T3N-R68W HARDLINES (460' SETBACKS)		0.00	0.00	0.00	3150387.54	1316248.25	40°12'00.882"N	104°57'41.803"W	polygon
SEC.27-T3N-R68W SECTION LINES		0.00	0.00	0.00	3150387.54	1316248.25	40°12'00.882"N	104°57'41.803"W	polygon
DOUTHIT 40C-27HZ BHL ON PLAT (2400'FNL & 300'FEL, SEC.27) REV-1		7279.00	-931.63	-5323.09	3145070.44	1315284.36	40°11'51.670"N	104°58'50.401"W	point
DOUTHIT 40C-27HZ BHL ON PLAT (2400'FNL & 300'FEL, SEC.27) REV-2		7284.00	-931.63	-5323.09	3145070.44	1315284.36	40°11'51.670"N	104°58'50.401"W	point
DOUTHIT 40C-27HZ LAND BOX		7284.00	0.00	0.00	3150387.54	1316248.25	40°12'00.882"N	104°57'41.803"W	polygon

WELLPATH COMPOSITION - Ref Wellbore: DOUTHIT 40C-27HZ AWB Ref Wellpath: DOUTHIT 40C-27HZ AWP

Start MD [ft]	End MD [ft]	Positional Uncertainty Model	Log Name/Comment	Wellbore
17.00	1191.00	Generic gyro - continuous (Standard)	MS ENERGY GYRO SURVEYS 13.5" <117-1191>	DOUTHIT 40C-27HZ AWB
1191.00	1599.00	NaviTrak (IFR)	BHI MWD+IFR SURVEYS 8.75" <1306-1599>	DOUTHIT 40C-27HZ AWB
1599.00	1842.00	Generic gyro - continuous (Standard)	GYRODATA SURVEYS 8.75" <1691-1842>	DOUTHIT 40C-27HZ AWB
1842.00	7712.00	NaviTrak (IFR)	BHI MWD+IFR SURVEYS 8.75" <1904-7712>	DOUTHIT 40C-27HZ AWB
7712.00	13110.00	NaviTrak (IFR)	BHI MWD+IFR SURVEYS 6.125" <7833-13110>	DOUTHIT 40C-27HZ AWB
13110.00	13172.00	Blind Drilling (std)	Projection to bit	DOUTHIT 40C-27HZ AWB

Actual Wellpath Report

DOUTHIT 40C-27HZ AWP

Page 7 of 7

REFERENCE WELLPATH IDENTIFICATION

Operator	KERR-MCGEE OIL & GAS ONSHORE LP	Slot	SLOT#17 DOUTHIT 40C-27HZ (1500'FNL & 279'FEL, SEC.26)
Area	COLORADO	Well	DOUTHIT 40C-27HZ
Field	WELD COUNTY (KERR MCGEE)	Wellbore	DOUTHIT 40C-27HZ AWB
Facility	SEC.26-T3N-R68W		

WELLPATH COMMENTS

MD [ft]	Inclination [°]	Azimuth [°]	TVD [ft]	Comment
117.00	0.460	192.000	117.00	BEGIN GYRO SURVEYS
1191.00	0.280	205.530	1190.97	TIE-INTO GYRO SURVEYS
1306.00	0.530	221.090	1305.96	BEGIN BHI MWD+IFR SURVEYS
1691.00	3.670	135.790	1690.69	BEGIN GYRODATA SURVEYS
1904.00	5.840	138.490	1902.92	BEGIN BHI MWD+IFR SURVEYS
7760.00	90.757	267.681	7272.72	7" CASING POINT
13110.00	88.700	263.940	7270.15	LAST BHI MWD+IFR SURVEYS
13172.00	88.700	263.940	7271.56	PROJECTION TO BIT