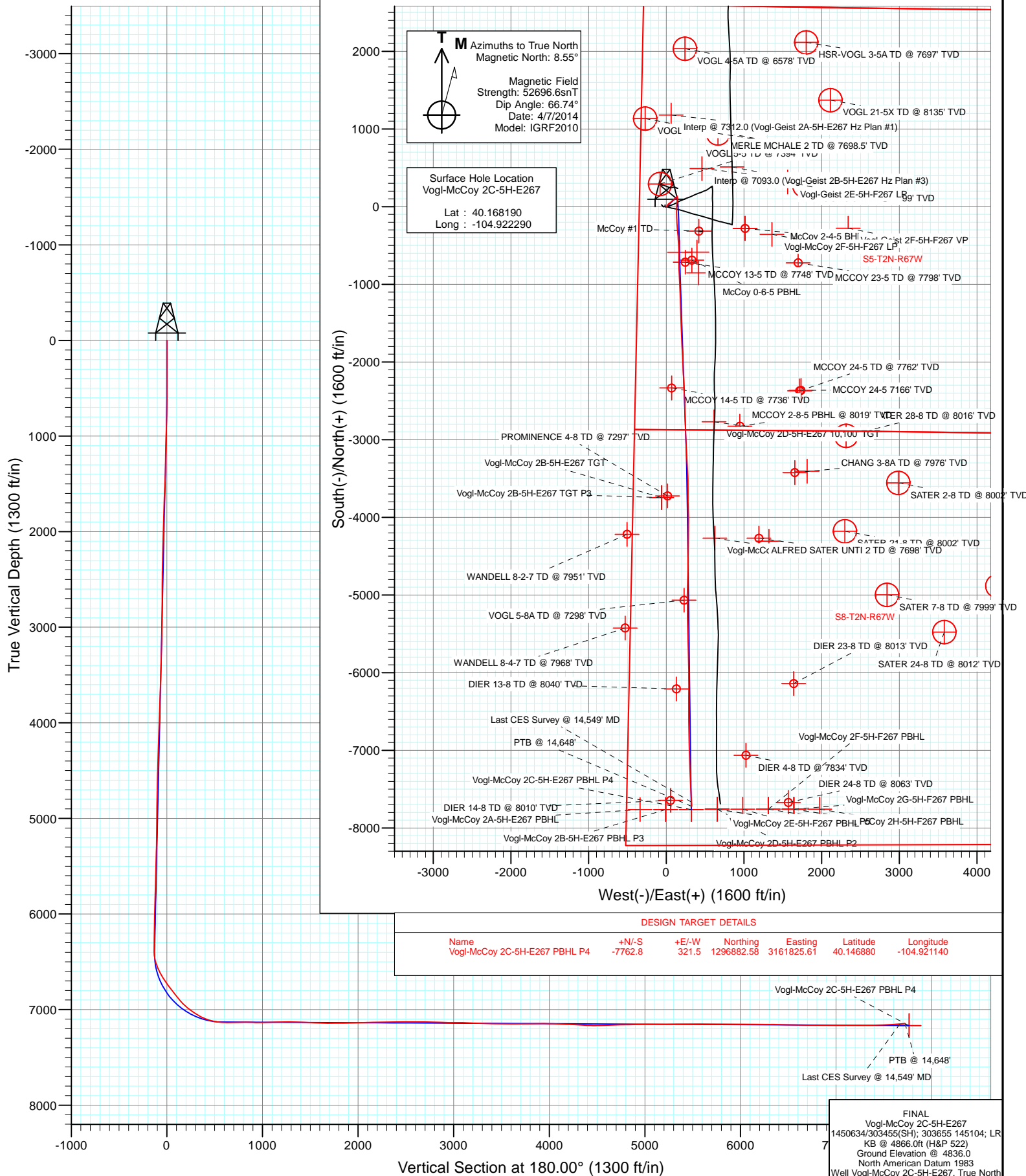


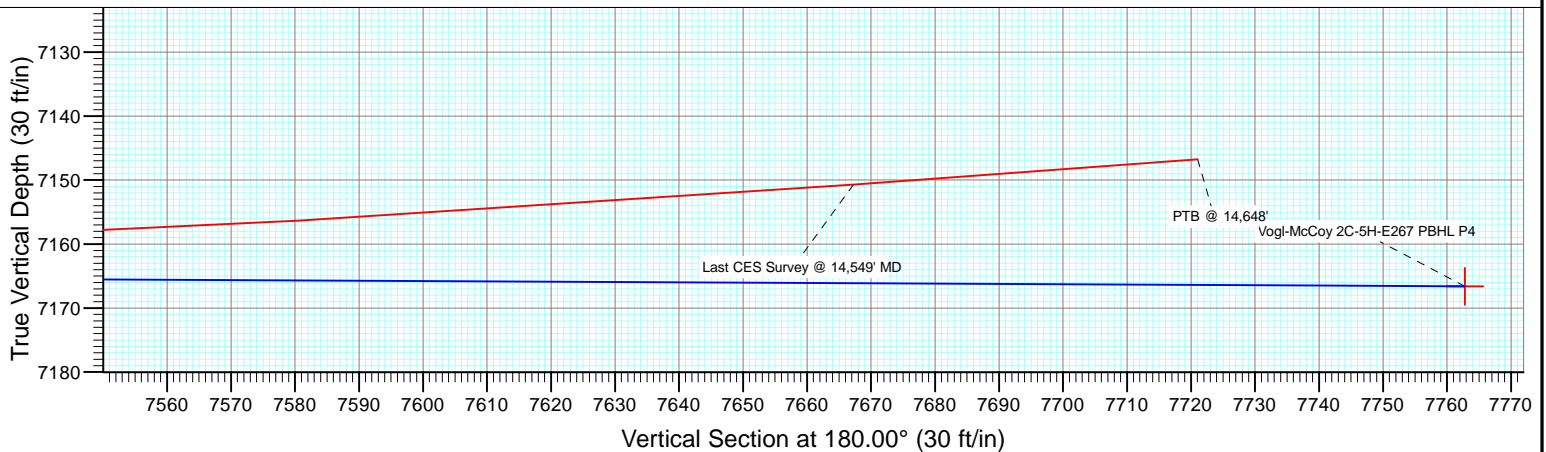
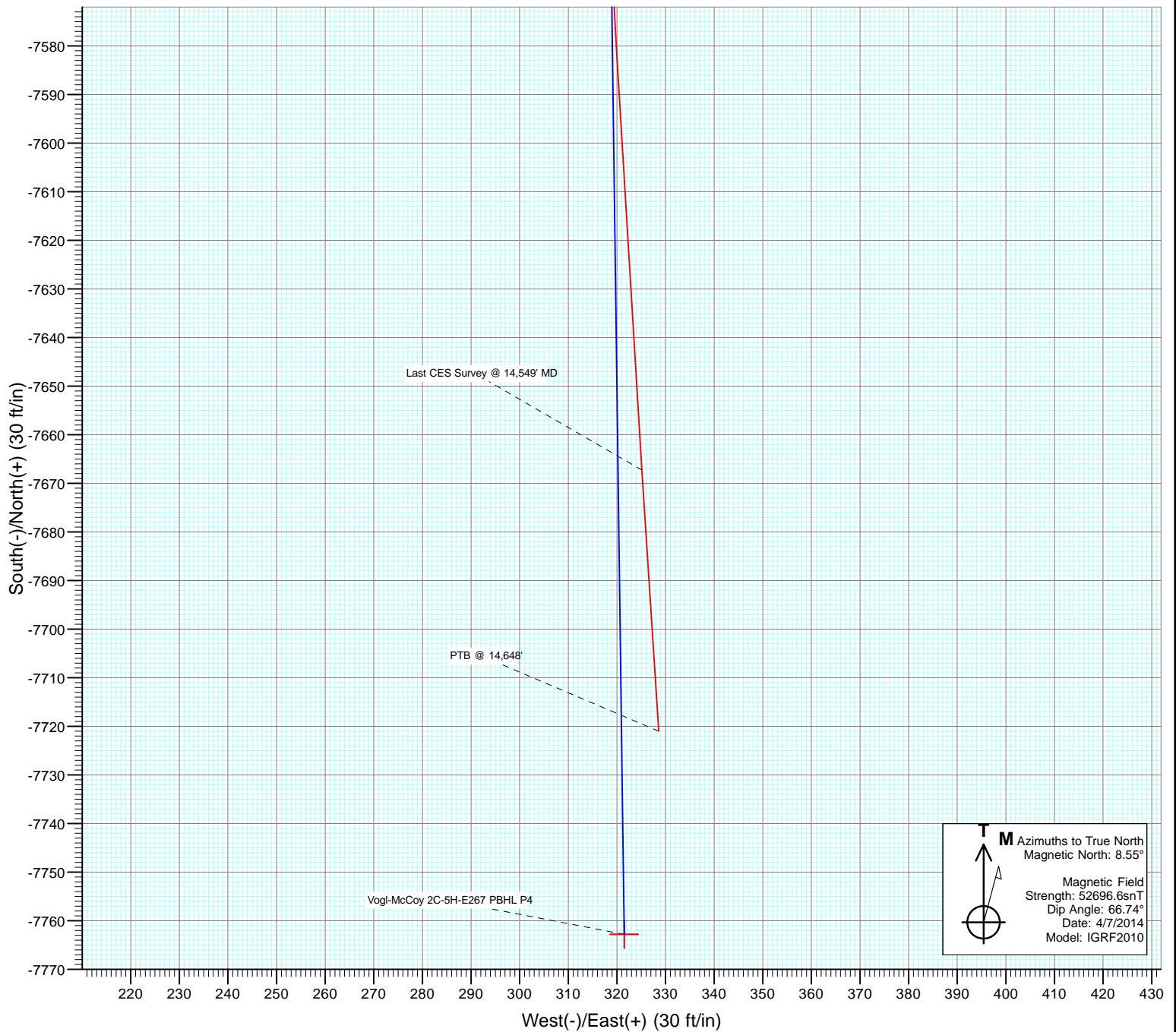


Project: DJ Wattenberg
Site: S5-T2N-R67W (Vogl-McCoy)
Well: Vogl-McCoy 2C-5H-E267
Wellbore: HZ
Design: FINAL





Project: DJ Wattenberg
Site: S5-T2N-R67W (Vogl-McCoy)
Well: Vogl-McCoy 2C-5H-E267
Wellbore: HZ
Design: FINAL



Survey Report

Company:	EnCana Oil & Gas (USA) Inc	Local Co-ordinate Reference:	Well Vogl-McCoy 2C-5H-E267
Project:	DJ Wattenberg	TVD Reference:	KB @ 4866.0ft (H&P 522)
Site:	S5-T2N-R67W (Vogl-McCoy)	MD Reference:	KB @ 4866.0ft (H&P 522)
Well:	Vogl-McCoy 2C-5H-E267	North Reference:	True
Wellbore:	HZ	Survey Calculation Method:	Minimum Curvature
Design:	FINAL	Database:	USA EDM 5000 Multi Users DB

Project	DJ Wattenberg		
Map System:	US State Plane 1983	System Datum:	Mean Sea Level
Geo Datum:	North American Datum 1983		
Map Zone:	Colorado Northern Zone		

Site		S5-T2N-R67W (Vogl-McCoy)			
Site Position:		Northing:	1,303,967.76 ft	Latitude:	40.166330
From:	Lat/Long	Easting:	3,161,787.74 ft	Longitude:	-104.921110
Position Uncertainty:	0.0 ft	Slot Radius:	13.200 in	Grid Convergence:	0.37 °

Well	Vogl-McCoy 2C-5H-E267					
Well Position	+N/-S	0.0 ft	Northing:	1,304,643.11 ft	Latitude:	40.168190
	+E/-W	0.0 ft	Easting:	3,161,453.56 ft	Longitude:	-104.922290
Position Uncertainty		0.0 ft	Wellhead Elevation:	ft	Ground Level:	4,836.0 ft

Wellbore	HZ				
Magnetics	Model Name	Sample Date	Declination (°)	Dip Angle (°)	Field Strength (nT)
	IGRF2010	4/7/2014	8.55	66.74	52,697

Design	FINAL				
Audit Notes:					
Version:	1.0	Phase:	ACTUAL	Tie On Depth:	0.0
Vertical Section:	Depth From (TVD)	+N/-S	+E/-W	Direction	
	(ft)	(ft)	(ft)	(°)	
	0.0	0.0	0.0	180.00	

Survey Program	Date	4/17/2014			
From (ft)	To (ft)	Survey (Wellbore)	Tool Name	Description	
143.0	14,648.0	Survey #1 (HZ)	Geolink MWD	Geolink MWD	

Survey										
Measured Depth (ft)	Inclination (°)	Azimuth (°)	Vertical Depth (ft)	+N/-S (ft)	+E/-W (ft)	Vertical Section (ft)	Dogleg Rate (°/100ft)	Build Rate (°/100ft)	Formations / Comments	
0.0	0.00	0.00	0.0	0.0	0.0	0.0	0.00	0.00		
143.0	0.18	90.47	143.0	0.0	0.2	0.0	0.13	0.13		
235.0	0.18	221.43	235.0	-0.1	0.3	0.1	0.36	0.00		
327.0	0.26	210.53	327.0	-0.4	0.1	0.4	0.10	0.09		
419.0	0.18	229.69	419.0	-0.7	-0.1	0.7	0.12	-0.09		
511.0	0.35	236.28	511.0	-0.9	-0.5	0.9	0.19	0.18		
603.0	0.70	50.48	603.0	-0.7	-0.3	0.7	1.14	0.38		
695.0	1.58	65.60	695.0	0.2	1.3	-0.2	1.00	0.96		
787.0	2.86	56.37	786.9	2.0	4.4	-2.0	1.44	1.39		
813.0	2.94	60.24	812.9	2.6	5.5	-2.6	0.81	0.31		
914.0	2.90	61.60	913.7	5.1	10.0	-5.1	0.08	-0.04		
1,006.0	1.90	22.40	1,005.7	7.7	12.6	-7.7	2.03	-1.09		
1,098.0	2.00	11.90	1,097.6	10.6	13.5	-10.6	0.40	0.11		

Survey Report

Company:	EnCana Oil & Gas (USA) Inc	Local Co-ordinate Reference:	Well Vogl-McCoy 2C-5H-E267
Project:	DJ Wattenberg	TVD Reference:	KB @ 4866.0ft (H&P 522)
Site:	S5-T2N-R67W (Vogl-McCoy)	MD Reference:	KB @ 4866.0ft (H&P 522)
Well:	Vogl-McCoy 2C-5H-E267	North Reference:	True
Wellbore:	HZ	Survey Calculation Method:	Minimum Curvature
Design:	FINAL	Database:	USA EDM 5000 Multi Users DB

Survey

Measured Depth (ft)	Inclination (°)	Azimuth (°)	Vertical Depth (ft)	+N/-S (ft)	+E/-W (ft)	Vertical Section (ft)	Dogleg Rate (°/100ft)	Build Rate (°/100ft)	Formations / Comments
1,190.0	0.30	299.60	1,189.6	12.3	13.6	-12.3	2.10	-1.85	
1,282.0	1.20	348.30	1,281.6	13.4	13.2	-13.4	1.12	0.98	
1,374.0	1.80	14.70	1,373.6	15.7	13.4	-15.7	0.98	0.65	
1,466.0	2.60	40.90	1,465.5	18.7	15.1	-18.7	1.38	0.87	
1,558.0	2.80	27.50	1,557.4	22.3	17.5	-22.3	0.72	0.22	
1,650.0	3.50	38.50	1,649.2	26.5	20.3	-26.5	1.00	0.76	
1,741.0	2.80	53.00	1,740.1	30.0	23.8	-30.0	1.16	-0.77	
1,833.0	2.90	38.30	1,832.0	33.2	27.1	-33.2	0.80	0.11	
1,925.0	2.30	55.80	1,923.9	36.0	30.0	-36.0	1.07	-0.65	
2,017.0	2.40	56.20	2,015.8	38.1	33.2	-38.1	0.11	0.11	
2,109.0	2.20	50.60	2,107.8	40.3	36.1	-40.3	0.33	-0.22	
2,201.0	2.10	53.70	2,199.7	42.4	38.9	-42.4	0.17	-0.11	
2,293.0	2.20	54.40	2,291.6	44.5	41.7	-44.5	0.11	0.11	
2,385.0	2.10	38.70	2,383.6	46.8	44.1	-46.8	0.65	-0.11	
2,477.0	1.10	75.50	2,475.5	48.4	46.1	-48.4	1.51	-1.09	
2,569.0	1.40	76.50	2,567.5	48.8	48.0	-48.8	0.33	0.33	
2,660.0	1.00	64.50	2,658.5	49.4	49.8	-49.4	0.52	-0.44	
2,752.0	1.10	68.60	2,750.5	50.1	51.3	-50.1	0.14	0.11	
2,847.0	0.70	85.10	2,845.5	50.5	52.8	-50.5	0.50	-0.42	
2,941.0	0.70	6.10	2,939.4	51.1	53.4	-51.1	0.95	0.00	
3,035.0	0.60	6.00	3,033.4	52.2	53.5	-52.2	0.11	-0.11	
3,129.0	1.10	16.20	3,127.4	53.5	53.8	-53.5	0.55	0.53	
3,223.0	2.70	59.00	3,221.4	55.5	56.0	-55.5	2.16	1.70	
3,318.0	2.50	55.50	3,316.3	57.9	59.6	-57.9	0.27	-0.21	
3,412.0	2.50	51.20	3,410.2	60.3	62.9	-60.3	0.20	0.00	
3,506.0	2.20	47.10	3,504.1	62.8	65.8	-62.8	0.37	-0.32	
3,601.0	2.70	10.70	3,599.0	66.3	67.6	-66.3	1.69	0.53	
3,696.0	3.20	38.20	3,693.9	70.5	69.6	-70.5	1.56	0.53	
3,790.0	3.60	61.50	3,787.8	74.0	73.8	-74.0	1.52	0.43	
3,885.0	3.20	59.30	3,882.6	76.8	78.7	-76.8	0.44	-0.42	
3,980.0	3.70	64.00	3,977.4	79.5	83.8	-79.5	0.60	0.53	
4,074.0	3.20	48.30	4,071.2	82.6	88.4	-82.6	1.13	-0.53	
4,169.0	2.90	43.60	4,166.1	86.1	92.1	-86.1	0.41	-0.32	
4,263.0	3.00	35.80	4,260.0	89.8	95.2	-89.8	0.44	0.11	
4,358.0	2.40	34.80	4,354.9	93.4	97.8	-93.4	0.63	-0.63	
4,452.0	2.30	57.80	4,448.8	96.1	100.5	-96.1	1.00	-0.11	
4,547.0	2.10	55.10	4,543.7	98.1	103.5	-98.1	0.24	-0.21	
4,642.0	1.70	50.30	4,638.7	100.0	106.0	-100.0	0.45	-0.42	
4,736.0	1.50	64.30	4,732.6	101.4	108.2	-101.4	0.47	-0.21	
4,831.0	1.50	58.10	4,827.6	102.6	110.4	-102.6	0.17	0.00	
4,926.0	1.20	54.70	4,922.6	103.8	112.2	-103.8	0.33	-0.32	
5,020.0	1.30	51.70	5,016.6	105.0	113.9	-105.0	0.13	0.11	
5,115.0	1.30	55.60	5,111.5	106.3	115.6	-106.3	0.09	0.00	
5,209.0	1.10	58.10	5,205.5	107.4	117.3	-107.4	0.22	-0.21	
5,304.0	1.70	38.40	5,300.5	109.0	118.9	-109.0	0.80	0.63	
5,399.0	2.70	56.40	5,395.4	111.3	121.7	-111.3	1.27	1.05	
5,493.0	2.70	49.60	5,489.3	114.0	125.2	-114.0	0.34	0.00	
5,588.0	2.10	44.30	5,584.2	116.7	128.1	-116.7	0.67	-0.63	
5,682.0	2.10	40.20	5,678.2	119.2	130.4	-119.2	0.16	0.00	
5,777.0	2.20	39.00	5,773.1	122.0	132.7	-122.0	0.12	0.11	
5,872.0	1.80	35.30	5,868.0	124.6	134.7	-124.6	0.44	-0.42	
5,966.0	1.70	38.70	5,962.0	126.9	136.4	-126.9	0.15	-0.11	
6,061.0	1.20	25.00	6,057.0	128.9	137.7	-128.9	0.64	-0.53	

Survey Report

Company:	EnCana Oil & Gas (USA) Inc	Local Co-ordinate Reference:	Well Vogl-McCoy 2C-5H-E267
Project:	DJ Wattenberg	TVD Reference:	KB @ 4866.0ft (H&P 522)
Site:	S5-T2N-R67W (Vogl-McCoy)	MD Reference:	KB @ 4866.0ft (H&P 522)
Well:	Vogl-McCoy 2C-5H-E267	North Reference:	True
Wellbore:	HZ	Survey Calculation Method:	Minimum Curvature
Design:	FINAL	Database:	USA EDM 5000 Multi Users DB

Survey

Measured Depth (ft)	Inclination (°)	Azimuth (°)	Vertical Depth (ft)	+N/-S (ft)	+E/-W (ft)	Vertical Section (ft)	Dogleg Rate (°/100ft)	Build Rate (°/100ft)	Formations / Comments
6,155.0	1.20	14.20	6,150.9	130.8	138.4	-130.8	0.24	0.00	
6,250.0	0.80	13.90	6,245.9	132.4	138.8	-132.4	0.42	-0.42	
6,345.0	0.80	10.00	6,340.9	133.7	139.1	-133.7	0.06	0.00	
6,392.0	0.40	192.80	6,387.9	133.8	139.1	-133.8	2.55	-0.85	
6,439.0	6.30	174.90	6,434.8	131.1	139.3	-131.1	12.60	12.55	
6,486.0	13.90	175.10	6,481.1	122.9	140.0	-122.9	16.17	16.17	
6,534.0	19.20	177.30	6,527.1	109.2	140.9	-109.2	11.12	11.04	
6,581.0	22.70	181.10	6,570.9	92.5	141.0	-92.5	7.98	7.45	
6,628.0	27.30	184.40	6,613.5	72.6	140.0	-72.6	10.22	9.79	
6,675.0	32.10	184.00	6,654.3	49.4	138.3	-49.4	10.22	10.21	
6,723.0	34.30	184.00	6,694.5	23.2	136.5	-23.2	4.58	4.58	
6,770.0	35.10	184.30	6,733.1	-3.5	134.6	3.5	1.74	1.70	
6,818.0	37.50	183.50	6,771.8	-31.8	132.6	31.8	5.10	5.00	
6,865.0	38.20	179.90	6,808.9	-60.7	131.8	60.7	4.93	1.49	
6,912.0	37.90	177.40	6,846.0	-89.6	132.5	89.6	3.34	-0.64	
6,959.0	38.90	177.60	6,882.8	-118.8	133.8	118.8	2.14	2.13	
7,007.0	42.20	178.30	6,919.3	-150.0	134.9	150.0	6.94	6.87	
7,054.0	47.00	177.20	6,952.7	-182.9	136.2	182.9	10.34	10.21	
7,101.0	50.90	177.00	6,983.6	-218.3	138.0	218.3	8.30	8.30	
7,148.0	54.20	176.40	7,012.2	-255.6	140.1	255.6	7.09	7.02	
7,196.0	57.00	174.80	7,039.3	-295.0	143.2	295.0	6.45	5.83	
7,243.0	60.40	173.50	7,063.7	-335.0	147.3	335.0	7.61	7.23	
7,291.0	65.50	175.60	7,085.5	-377.5	151.3	377.5	11.32	10.62	
7,338.0	71.60	176.50	7,102.7	-421.1	154.3	421.1	13.10	12.98	
7,385.0	75.40	176.30	7,116.0	-466.1	157.1	466.1	8.10	8.09	
7,432.0	79.40	176.30	7,126.3	-511.9	160.1	511.9	8.51	8.51	
7,480.0	84.40	177.50	7,133.0	-559.3	162.7	559.3	10.71	10.42	
7,520.0	89.80	179.90	7,135.1	-599.2	163.6	599.2	14.77	13.50	
7,572.0	91.60	181.00	7,134.4	-651.2	163.2	651.2	4.06	3.46	
7,667.0	90.00	179.60	7,133.1	-746.2	162.7	746.2	2.24	-1.68	
7,759.0	88.90	178.00	7,134.0	-838.2	164.6	838.2	2.11	-1.20	
7,851.0	89.00	176.80	7,135.7	-930.1	168.8	930.1	1.31	0.11	
7,943.0	92.00	176.10	7,134.9	-1,021.9	174.5	1,021.9	3.35	3.26	
8,035.0	92.10	178.30	7,131.6	-1,113.7	179.0	1,113.7	2.39	0.11	
8,127.0	90.20	178.80	7,129.7	-1,205.6	181.3	1,205.6	2.14	-2.07	
8,219.0	90.40	178.90	7,129.3	-1,297.6	183.1	1,297.6	0.24	0.22	
8,311.0	87.70	178.40	7,130.8	-1,389.6	185.3	1,389.6	2.98	-2.93	
8,403.0	86.60	178.00	7,135.4	-1,481.4	188.2	1,481.4	1.27	-1.20	
8,494.0	88.10	177.10	7,139.6	-1,572.2	192.1	1,572.2	1.92	1.65	
8,587.0	89.80	177.00	7,141.3	-1,665.1	196.8	1,665.1	1.83	1.83	
8,678.0	90.20	177.10	7,141.3	-1,756.0	201.5	1,756.0	0.45	0.44	
8,770.0	90.10	177.20	7,141.0	-1,847.9	206.1	1,847.9	0.15	-0.11	
8,862.0	91.20	177.20	7,140.0	-1,939.7	210.6	1,939.7	1.20	1.20	
8,954.0	92.40	177.70	7,137.1	-2,031.6	214.7	2,031.6	1.41	1.30	
9,046.0	91.90	178.40	7,133.6	-2,123.5	217.8	2,123.5	0.93	-0.54	
9,138.0	90.00	176.50	7,132.1	-2,215.4	221.9	2,215.4	2.92	-2.07	
9,230.0	90.70	176.50	7,131.6	-2,307.2	227.5	2,307.2	0.76	0.76	
9,322.0	92.40	177.90	7,129.1	-2,399.0	232.0	2,399.0	2.39	1.85	
9,414.0	90.30	178.50	7,126.9	-2,491.0	234.9	2,491.0	2.37	-2.28	
9,505.0	88.90	178.10	7,127.5	-2,581.9	237.6	2,581.9	1.60	-1.54	
9,597.0	88.40	177.90	7,129.7	-2,673.8	240.8	2,673.8	0.59	-0.54	
9,689.0	89.60	177.40	7,131.3	-2,765.8	244.6	2,765.8	1.41	1.30	
9,781.0	88.30	177.80	7,133.0	-2,857.7	248.4	2,857.7	1.48	-1.41	

Survey Report

Company:	EnCana Oil & Gas (USA) Inc	Local Co-ordinate Reference:	Well Vogl-McCoy 2C-5H-E267
Project:	DJ Wattenberg	TVD Reference:	KB @ 4866.0ft (H&P 522)
Site:	S5-T2N-R67W (Vogl-McCoy)	MD Reference:	KB @ 4866.0ft (H&P 522)
Well:	Vogl-McCoy 2C-5H-E267	North Reference:	True
Wellbore:	HZ	Survey Calculation Method:	Minimum Curvature
Design:	FINAL	Database:	USA EDM 5000 Multi Users DB

Survey

Measured Depth (ft)	Inclination (°)	Azimuth (°)	Vertical Depth (ft)	+N/-S (ft)	+E/-W (ft)	Vertical Section (ft)	Dogleg Rate (°/100ft)	Build Rate (°/100ft)	Formations / Comments
9,873.0	88.70	178.00	7,135.4	-2,949.6	251.8	2,949.6	0.49	0.43	
9,968.0	90.40	178.70	7,136.1	-3,044.5	254.5	3,044.5	1.94	1.79	
10,062.0	87.50	176.40	7,137.9	-3,138.4	258.6	3,138.4	3.94	-3.09	
10,157.0	88.00	176.90	7,141.6	-3,233.2	264.1	3,233.2	0.74	0.53	
10,251.0	88.00	176.90	7,144.9	-3,327.0	269.2	3,327.0	0.00	0.00	
10,346.0	88.20	176.80	7,148.0	-3,421.8	274.4	3,421.8	0.24	0.21	
10,441.0	88.70	178.60	7,150.6	-3,516.7	278.2	3,516.7	1.97	0.53	
10,535.0	91.80	179.30	7,150.2	-3,610.6	279.9	3,610.6	3.38	3.30	
10,630.0	90.90	180.40	7,147.9	-3,705.6	280.2	3,705.6	1.50	-0.95	
10,725.0	90.20	179.00	7,147.0	-3,800.6	280.7	3,800.6	1.65	-0.74	
10,819.0	90.30	178.40	7,146.6	-3,894.6	282.8	3,894.6	0.65	0.11	
10,914.0	89.00	179.50	7,147.2	-3,989.5	284.6	3,989.5	1.79	-1.37	
11,008.0	87.80	179.60	7,149.8	-4,083.5	285.3	4,083.5	1.28	-1.28	
11,103.0	87.60	181.00	7,153.6	-4,178.4	284.8	4,178.4	1.49	-0.21	
11,198.0	86.60	180.20	7,158.4	-4,273.3	283.8	4,273.3	1.35	-1.05	
11,292.0	86.90	180.60	7,163.8	-4,367.1	283.2	4,367.1	0.53	0.32	
11,387.0	89.50	181.30	7,166.8	-4,462.1	281.6	4,462.1	2.83	2.74	
11,482.0	92.00	180.70	7,165.5	-4,557.0	279.9	4,557.0	2.71	2.63	
11,576.0	92.70	180.70	7,161.7	-4,651.0	278.8	4,651.0	0.74	0.74	
11,671.0	90.70	180.90	7,158.8	-4,745.9	277.4	4,745.9	2.12	-2.11	
11,765.0	90.80	181.30	7,157.6	-4,839.9	275.6	4,839.9	0.44	0.11	
11,860.0	91.10	181.10	7,156.0	-4,934.8	273.7	4,934.8	0.38	0.32	
11,955.0	90.40	181.60	7,154.8	-5,029.8	271.4	5,029.8	0.91	-0.74	
12,049.0	90.10	179.70	7,154.4	-5,123.8	270.3	5,123.8	2.05	-0.32	
12,143.0	90.30	178.40	7,154.1	-5,217.8	271.9	5,217.8	1.40	0.21	
12,238.0	91.30	178.90	7,152.7	-5,312.7	274.1	5,312.7	1.18	1.05	
12,332.0	90.20	179.40	7,151.5	-5,406.7	275.5	5,406.7	1.29	-1.17	
12,427.0	89.10	178.30	7,152.1	-5,501.7	277.4	5,501.7	1.64	-1.16	
12,521.0	90.70	178.60	7,152.2	-5,595.7	280.0	5,595.7	1.73	1.70	
12,616.0	89.70	178.40	7,151.9	-5,690.6	282.5	5,690.6	1.07	-1.05	
12,711.0	89.80	178.60	7,152.3	-5,785.6	285.0	5,785.6	0.24	0.11	
12,805.0	89.80	178.40	7,152.7	-5,879.6	287.4	5,879.6	0.21	0.00	
12,900.0	89.70	179.30	7,153.1	-5,974.5	289.3	5,974.5	0.95	-0.11	
12,994.0	89.50	179.40	7,153.7	-6,068.5	290.4	6,068.5	0.24	-0.21	
13,089.0	89.40	179.70	7,154.6	-6,163.5	291.1	6,163.5	0.33	-0.11	
13,183.0	89.60	180.60	7,155.5	-6,257.5	290.9	6,257.5	0.98	0.21	
13,278.0	89.90	181.60	7,155.9	-6,352.5	289.1	6,352.5	1.10	0.32	
13,372.0	88.70	180.60	7,157.0	-6,446.5	287.3	6,446.5	1.66	-1.28	
13,467.0	87.90	179.10	7,159.8	-6,541.4	287.5	6,541.4	1.79	-0.84	
13,561.0	89.00	178.40	7,162.4	-6,635.4	289.6	6,635.4	1.39	1.17	
13,656.0	89.10	178.50	7,164.0	-6,730.3	292.1	6,730.3	0.15	0.11	
13,751.0	90.50	178.90	7,164.3	-6,825.3	294.3	6,825.3	1.53	1.47	
13,845.0	89.80	178.70	7,164.0	-6,919.3	296.3	6,919.3	0.77	-0.74	
13,940.0	89.90	179.20	7,164.3	-7,014.2	298.0	7,014.2	0.54	0.11	
14,034.0	89.80	178.80	7,164.5	-7,108.2	299.6	7,108.2	0.44	-0.11	
14,129.0	90.20	178.70	7,164.5	-7,203.2	301.7	7,203.2	0.43	0.42	
14,224.0	89.90	177.10	7,164.5	-7,298.1	305.2	7,298.1	1.71	-0.32	
14,318.0	91.10	177.20	7,163.6	-7,392.0	309.9	7,392.0	1.28	1.28	
14,413.0	92.30	176.90	7,160.8	-7,486.9	314.8	7,486.9	1.30	1.26	
14,507.0	93.20	176.80	7,156.3	-7,580.6	319.9	7,580.6	0.96	0.96	
14,594.0	94.20	176.30	7,150.7	-7,667.3	325.1	7,667.3	1.28	1.15	Last CES Survey @ 14,549' MD
14,648.0	94.20	176.30	7,146.7	-7,721.0	328.6	7,721.0	0.00	0.00	PTB @ 14,648'

Survey Report

Company:	EnCana Oil & Gas (USA) Inc	Local Co-ordinate Reference:	Well Vogl-McCoy 2C-5H-E267
Project:	DJ Wattenberg	TVD Reference:	KB @ 4866.0ft (H&P 522)
Site:	S5-T2N-R67W (Vogl-McCoy)	MD Reference:	KB @ 4866.0ft (H&P 522)
Well:	Vogl-McCoy 2C-5H-E267	North Reference:	True
Wellbore:	HZ	Survey Calculation Method:	Minimum Curvature
Design:	FINAL	Database:	USA EDM 5000 Multi Users DB

Targets									
Target Name									
- hit/miss target	Dip Angle	Dip Dir.	TVD	+N/-S	+E/-W	Northing	Easting	Latitude	Longitude
- Shape	(°)	(°)	(ft)	(ft)	(ft)	(ft)	(ft)		
Vogl-McCoy 2C-5H-E26'	0.00	0.00	7,130.0	-7,762.8	321.5	1,296,882.58	3,161,825.61	40.146880	-104.921140
- actual wellpath misses target center by 45.6ft at 14648.0ft MD (7146.7 TVD, -7721.0 N, 328.6 E)									
- Point									
Vogl-McCoy 2C-5H-E26'	0.00	0.00	7,131.0	-586.4	170.0	1,304,057.83	3,161,627.37	40.166580	-104.921682
- actual wellpath misses target center by 7.6ft at 7507.1ft MD (7134.8 TVD, -586.4 N, 163.5 E)									
- Point									
Vogl-McCoy 2C-5H-E26'	0.00	0.00	7,131.0	-586.4	394.6	1,304,059.31	3,161,851.92	40.166580	-104.920878
- actual wellpath misses target center by 231.1ft at 7512.2ft MD (7135.0 TVD, -591.4 N, 163.5 E)									
- Point									
Vogl-McCoy 2C-5H-E26'	0.00	0.00	7,166.6	-7,762.8	321.5	1,296,882.58	3,161,825.61	40.146880	-104.921140
- actual wellpath misses target center by 46.8ft at 14648.0ft MD (7146.7 TVD, -7721.0 N, 328.6 E)									
- Point									
Interp @ 7130.0 (Vogl-M	0.00	0.00	7,130.0	-852.5	415.5	1,303,793.30	3,161,874.60	40.165850	-104.920803
- actual wellpath misses target center by 250.2ft at 7784.6ft MD (7134.5 TVD, -863.8 N, 165.6 E)									
- Point									

Design Annotations					
Measured Depth	Vertical Depth	Local Coordinates			
(ft)	(ft)	+N/-S (ft)	+E/-W (ft)	Comment	
14,594.0	7,150.7	-7,667.3	325.1	Last CES Survey @ 14,549' MD	
14,648.0	7,146.7	-7,721.0	328.6	PTB @ 14,648'	

Checked By: _____ Approved By: _____ Date: _____