

HALLIBURTON

iCem® Service

Post Job Report

ENCANA OIL & GAS (USA) INC. - EBUS

Date: Thursday, June 19, 2014

Vogl-McCoy 2C-5 H-E267

Sincerely,
ONUORAH, THEODORE

Table of Contents

1.1	Executive Summary	3
1.2	Cementing Job Summary	5
1.3	Job Event Log	7
2.0	Custom Graphs	8
2.1	Custom Graph	8
3.0	Appendix	9

1.1 Executive Summary

Halliburton appreciates the opportunity to perform the cementing services on the cement EnCana Vogl-McCoy 2C-5 H-E267 Production casing job. A pre-job safety meeting was held before the job where details of the job were discussed, potential safety hazards were reviewed, and environmental compliance procedures were outlined.

Halliburton maintains a continuous quality improvement process and appreciates any comments or suggestions that you may have. Halliburton again thanks you for the opportunity to perform service work on this well. We hope to be your solutions provider for future projects.

Respectfully,

Halliburton [Brighton District]

Job Times

	Date	Time	Time Zone
Requested Time On Location			MTN
Called Out			
On Location			
Job Started	04/18/2014	11:12	
Job Completed	04/18/2014	13:17	
Departed Location			

1.2 Cementing Job Summary

HALLIBURTON

Cementing Job Summary

The Road to Excellence Starts with Safety

Sold To #: 340078	Ship To #: 3113301	Quote #:	Sales Order #: 0901273511							
Customer: ENCANA OIL & GAS (USA) INC. - EBUS		Customer Rep:								
Well Name: VOGL-MCCOY	Well #: 2C-5 H-E267	API/UWI #: 05-123-37818-00								
Field: WATTENBERG	City (SAP): LON	County/Parish: WELD	State: COLORADO							
Legal Description: SW NW-5-2N-67W-2602FNL-341FWL										
Contractor: Kevin Bergeron		Rig/Platform Name/Num: H&P 522								
Job BOM: 7523										
Well Type: HORIZONTAL OIL										
Sales Person: HALAMERICA\HB50180		Srv Supervisor: Wesley Whipple								
Job										
Formation Name										
Formation Depth (MD)	Top	Bottom								
Form Type		BHST								
Job depth MD	14721ft	Job Depth TVD								
Water Depth		Wk Ht Above Floor								
Perforation Depth (MD)	From	To								
Well Data										
Description	New / Used	Size in	ID in	Weight lbm/ft	Thread	Grade	Top MD ft	Bottom MD ft	Top TVD ft	Bottom TVD ft
Casing		9.625	8.835	40		N-80	0	800	0	800
Casing		7	6.366	23		N-80	0	7552	0	7100
Casing		4.5	3.92	13.5			0	14721	0	7166
Open Hole Section			8.75				800	7552	800	7100
Open Hole Section			6.13				7552	14721	7100	7166
Tools and Accessories										
Type	Size in	Qty	Make	Depth ft	Type	Size in	Qty	Make		
Guide Shoe	4.5			14721	Top Plug	4.5		HES		
Float Shoe	4.5				Bottom Plug	4.5		HES		
Float Collar	4.5				SSR plug set	4.5		HES		
Insert Float	4.5				Plug Container	4.5		HES		
Stage Tool	4.5				Centralizers	4.5		HES		
Miscellaneous Materials										
Gelling Agt		Conc		Surfactant		Conc		Acid Type		Qty
Treatment Fld		Conc		Inhibitor		Conc		Sand Type		Size
Fluid Data										
Stage/Plug #: 1										
Fluid #	Stage Type	Fluid Name	Qty	Qty UoM	Mixing Density lbm/gal	Yield ft3/sack	Mix Fluid Gal	Rate bbl/min	Total Mix Fluid Gal	
1	11.5 lb/gal Tuned Spacer III	Tuned Spacer III	0	bbl	11.5	7.17				
36 gal/bbl		FRESH WATER								

HALLIBURTON***Cementing Job Summary***

148.73 lbm/bbl		BARITE, BULK (100003681)							
Fluid #	Stage Type	Fluid Name	Qty	Qty UoM	Mixing Density lbm/gal	Yield ft3/sack	Mix Fluid Gal	Rate bbl/min	Total Mix Fluid Gal
2	ExpandaCem B2	EXPANDACEM (TM) SYSTEM		sack	13.8	1.67		4	7.72
7.72 Gal		FRESH WATER							
47 lbm		CMT - PREMIUM - CLASS G REG OR TYPE V, BULK (100003685)							
35 lbm		POZMIX A FLYASH (100003690)							
Fluid #	Stage Type	Fluid Name	Qty	Qty UoM	Mixing Density lbm/gal	Yield ft3/sack	Mix Fluid Gal	Rate bbl/min	Total Mix Fluid Gal
3	Displacement		0	bbl	10.5				
Cement Left in Pipe		Amount	ft	Reason			Shoe Joint		
Comment									

1.3 Job Event Log

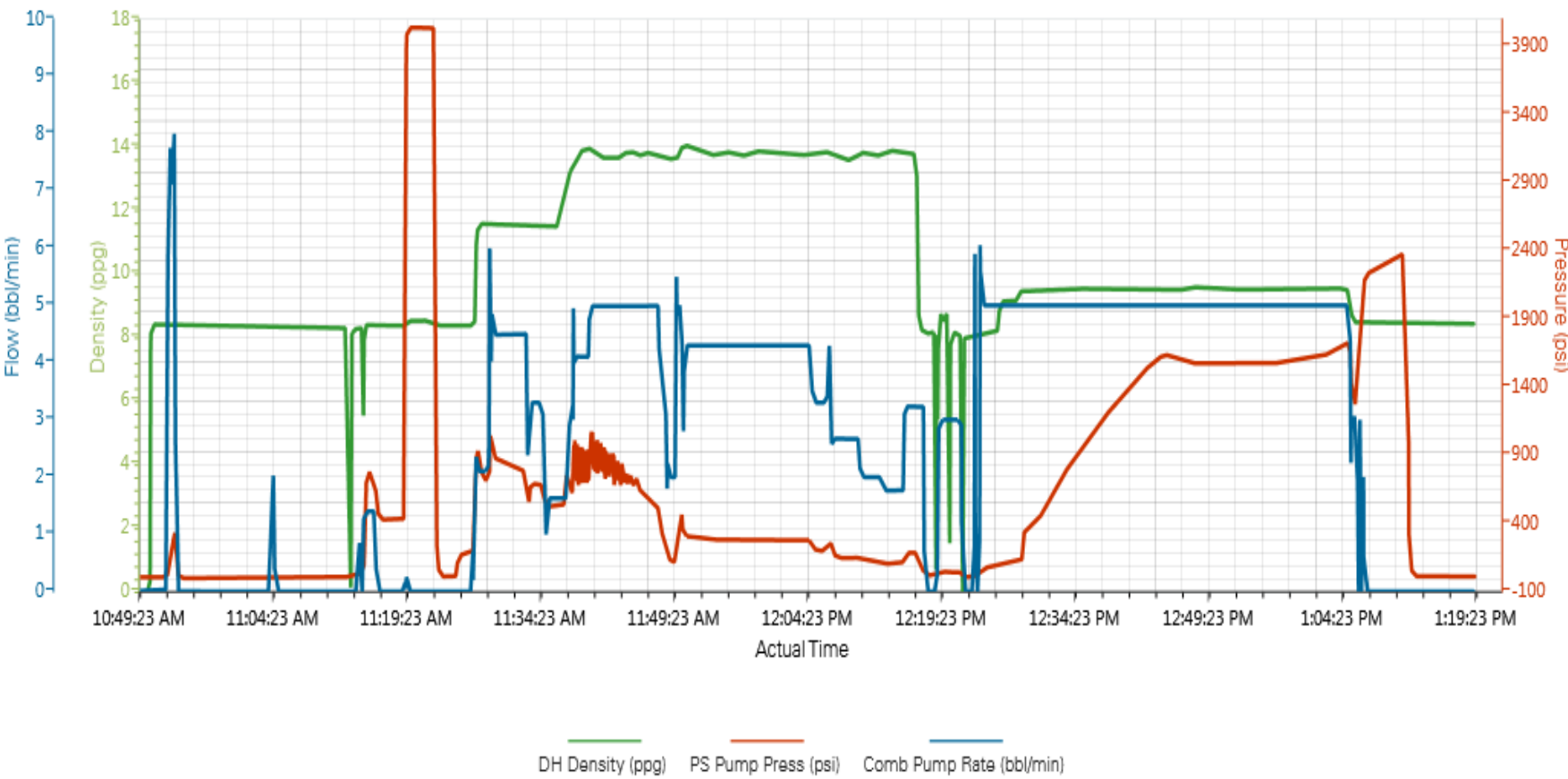
Type	Seq. No.	Activity	Graph Label	Date	Time	Source	DH Density (ppg)	Comb Pump Rate (bbl/min)	Pump Stg Tot (bbl)	PS Pump Press (psi)	Comment
Event	1	Start Job	Start Job	4/18/2014	11:12:37	COM5	8.29	0.00	7.1	6.00	Start Job
Event	2	Test Lines	Test Lines	4/18/2014	11:18:57	COM5	8.38	0.00	9.3	434.00	Pressure test pumps and lines to 4000psi, found no leaks in iron and pressure held
Event	3	Pump Spacer 1	Pump Spacer 1	4/18/2014	11:26:34	COM5	8.35	0.00	9.3	176.00	Mix and Pump 40 bbls of Tuned Spacer @11.5ppg. Density verified by pressurized mud scales.
Event	4	Pump Cement	Pump Cement	4/18/2014	11:36:57	COM5	12.17	1.60	31.8	536.00	Mix and Pump 545sks of ExpandaCem @13.8ppg. Density verified by pressurized mud scales.
Event	5	Pump Displacement	Pump Displacement	4/18/2014	12:16:29	COM5	13.73	3.30	150.8	187.00	Pump 3bbls of Retarded water
Event	6	Shutdown	Shutdown	4/18/2014	12:17:34	COM5	8.14	0.00	3.0	32.00	Shutdown
Event	7	Clean Lines	Clean Lines	4/18/2014	12:21:52	COM5	7.76	0.00	11.2	11.00	Wash Pumps and lines
Event	8	Drop Top Plug	Drop Top Plug	4/18/2014	12:22:29	COM5	8.06	0.00	11.2	6.00	Drop Top plug from BlackHawk Tool Head. Witnessed by Company rep, BlackHawk Rep, and Hes Tool Hand
Event	9	Pump Displacement	Pump Displacement	4/18/2014	12:23:01	COM5	8.07	0.00	11.2	7.00	Pump Brine Water Displacement
Event	10	Bump Plug	Bump Plug	4/18/2014	13:07:01	COM5	8.43	0.00	210.3	2243.00	
Event	11	Other	Other	4/18/2014	13:11:03	COM5	8.45	0.00	210.3	2380.00	
Event	12	End Job	End Job	4/18/2014	13:17:50	COM5	8.36	0.00	210.3	11.00	

2.0 Custom Graphs

2.1 Custom Graph



Custom Results



3.0 Appendix
