

ENCANA OIL & GAS (USA) INC. - EBUS  
DO NOT MAIL - 370 17TH ST STE 1700  
DENVER, Colorado

Vogl Geist 2C-5H-E267

H&P 522

## **Post Job Summary**

# **Cement Intermediate Casing**

Date Prepared: 4/1/2014  
Version: 1

Service Supervisor: WHIPPLE, WESLEY

Submitted by: LANSDALE, JUSTIN

**HALLIBURTON**



# HALLIBURTON

## ***Pumping Schedule***

---

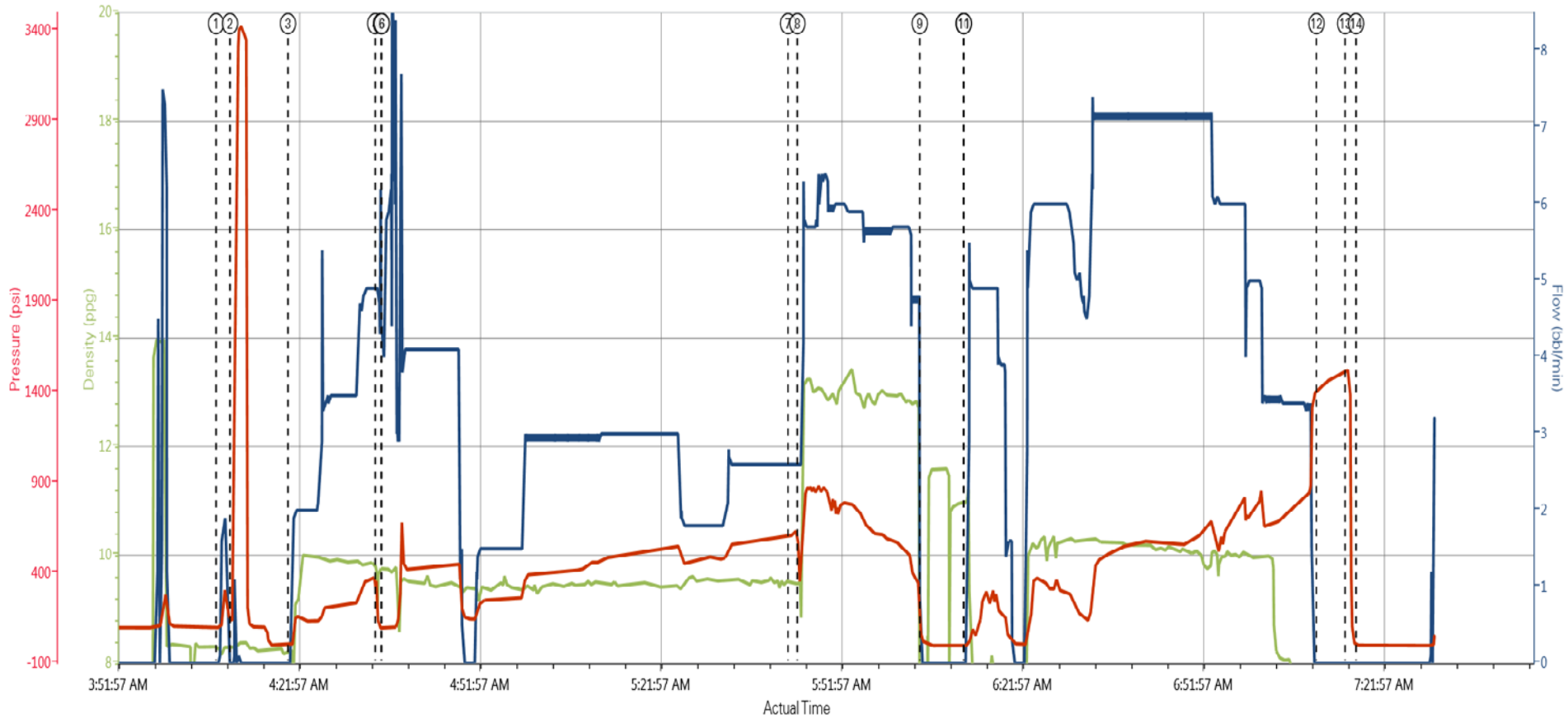
Stage /Plug #	Fluid #	Fluid Type	Fluid Name	Surface Density lbm/gal	Avg Rate bbl/min	Surface Volume
1	1	Spacer	TUNED SPACER III	10.00	3.5	30.0 bbl
1	2	Cement Slurry	TUNED LIGHT (TM) B1	10.00	4	332.0 sacks
1	3	Cement Slurry	VARICEM B1	13.00	6	317.0 sacks
1	4	Mud	DISPLACEMENT	8.40	7	288.8 bbls



# HALLIBURTON

## Data Acquisition

Job Graph



DH Density (ppg) Comb Pump Rate (bbl/min) PS Pump Press (psi)

- ① Start Job 8.3;0;99    ④ Drop Bottom Plug 9.29;4.9;140    ⑦ Drop Bottom Plug 9.5;2.6;608    ⑩ Drop Top Plug 10.97;0;-1    ⑬ Other 7.54;0;1526
- ② Test Lines 8.32;0;137    ⑤ Drop Bottom Plug 9.74;4;92    ⑧ Pump Tail Cement 9.52;2.6;342    ⑪ Pump Displacement 11;0;-2    ⑭ End Job 7.63;0;1
- ③ Pump Spacer 18.25;0;0    ⑥ Pump Lead Cement 9.73;4;92    ⑨ Shutdown -13.12;0;27    ⑫ Bump Plug 7.51;0;1425



## Service Supervisor Reports

### Job Log

Date/Time	Chart #	Activity Code	Pump Rate	Cum Vol	Pump		Pressure (psig)	Comments
03/28/2014 20:00		Call Out						Crew called out by ARS office at 2000 and requested on location at 0000.
03/28/2014 23:20		Crew Leave Yard						Crew pre tripped all equipment in yard to ensure working quality. Held a pre journey safety meeting to discuss route being traveled, road/weather conditions and potential driving hazards. All drivers fit for duty
03/28/2014 23:45		Arrive At Loc						Crew arrived on location and met with Company Rep to discuss job details.
03/29/2014 01:00		Rig-Up Equipment						Crew performed site assesment and hazard hunt. Commenced rig up of all equipment.
03/29/2014 02:00		Casing on Bottom						Rig landed casing on bottom and began circulating
03/29/2014 03:00		Rig-Up Completed						Crew completed rig up of all equipment
03/29/2014 03:30		Safety Meeting						Held a pre job safety meeting with all hands on location to discuss job process, procedures ad potential hazards that could occur while pumping.
03/29/2014 04:08		Start Job						Start Job
03/29/2014 04:10		Test Lines					3500.0	Pressure test pumps and lines to 3500 psi. Found no leaks in iron and pressure held.
03/29/2014 04:20		Pump Spacer 1	3.5	30			210.0	Mix and Pump 30bbls of Tuned Spacer @ 10.0ppg. Density verified by pressurized mud scales.
03/29/2014 04:34		Drop Bottom Plug						Drop Bottom plug from HES plug container. Witnessed by Company Rep.
03/29/2014 04:35		Pump Lead Cement	4	137.17			420.0	Mix and Pump 332 sks of Tuned Light @ 10.0 ppg. Density verified by pressurized mud scales.
03/29/2014 05:44		Drop Bottom Plug						Drop Bottom plug from HES plug container. Witnessed by Company Rep.
03/29/2014 05:45		Pump Tail Cement	6	110.09			875.0	Mix and pump 317sks of Varicem @ 13.0ppg. Density verified by pressurized mud scales.
03/29/2014 06:04		Shutdown						Shutdown to wash Cement Mixing System
03/29/2014 06:13		Drop Top Plug						Drop Top plug from HES plug Container. Witnessed by Company Rep
03/29/2014 06:14		Pump Displacement	7	288.75			570.0	Pump 10.7 ppg. Mud displacement. recieved 30bbls of cement to surface.
03/29/2014 07:10		Bump Plug					1400.0	Bump plug 500 psi over final pumping pressure.
03/29/2014 07:15		Check Floats						Released pressure back to pump truck. Recieved 3bbls back and floats held.
03/29/2014 07:17		End Job						End Job
03/29/2014 07:30		Rig-Down Equipment						Crew held rig down safety meeting. Commenced rig down of all equipment.
03/29/2014 08:00		Rig-Down Completed						Rig down completed.
03/29/2014 08:30		Crew Leave Location						Crew held a pre journey safety meeting to discuss route being traveled, road/weather conditions and potential driving hazards. All drivers fit for duty

## The Road to Excellence Starts with Safety

The Road to Excellence Starts with Safety			
Sold To #: 340078	Ship To #: 3456554	Quote #:	Sales Order #: 901219936
Customer: ENCANA OIL & GAS (USA) INC. - EBUS		Customer Rep: Bergeron, Kevin	
Well Name: Vogl Geist		Well #: 2C-5H-E267	API/UWI #: 05-123-37860
Field:	City (SAP): FIRESTONE	County/Parish: Weld	State: Colorado
Lat: N 40.168 deg. OR N 40 deg. 10 min. 5.484 secs.		Long: W 104.922 deg. OR W -105 deg. 4 min. 39.864 secs.	
Contractor: H&P Drilling		Rig/Platform Name/Num: H&P 522	
Job Purpose: Cement Intermediate Casing			
Well Type: Development Well		Job Type: Cement Intermediate Casing	
Sales Person: CORMIER, ALLISON	Srvc Supervisor: WHIPPLE, WESLEY		MBU ID Emp #: 518611

## Job Personnel

HES Emp Name	Exp Hrs	Emp #	HES Emp Name	Exp Hrs	Emp #	HES Emp Name	Exp Hrs	Emp #
ALVAREZ, BRANDON Paul	8.8	555850	BROOM, KENDALL L	8.8	524682	PRUDHOMME, JOSHUA Paul	8.8	548040
RODRIGUEZ, ISRAEL	8.8	77771	TRIER, DEREK Adam	8.8	546461	VIATOR, JASON R.	8.8	550394
WHIPPLE, WESLEY Morgan	8.8	518611						

## Equipment

HES Unit #	Distance-1 way	HES Unit #	Distance-1 way	HES Unit #	Distance-1 way	HES Unit #	Distance-1 way
11019824	15 mile	11398319	15 mile	11488570C	15 mile	11526488	15 mile
11605599	15 mile	11633848	15 mile	11923776C	15 mile		

## Job

## Job Times

Formation Name				Date	Time	Time Zone
Formation Depth (MD)	Top		Bottom	Called Out	28 - Mar - 2014	20:00 MST
Form Type		BHST		On Location	28 - Mar - 2014	23:45 MST
Job depth MD	7661. ft	Job Depth TVD	7318. ft	Job Started	29 - Mar - 2014	04:08 MST
Water Depth		Wk Ht Above Floor	5. ft	Job Completed	29 - Mar - 2014	07:17 MST
Perforation Depth (MD)	From		To	Departed Loc	29 - Mar - 2014	08:30 MST

## Well Data

Description	New / Used	Max pressure psig	Size in	ID in	Weight lbm/ft	Thread	Grade	Top MD ft	Bottom MD ft	Top TVD ft	Bottom TVD ft
-------------	------------	-------------------	---------	-------	---------------	--------	-------	-----------	--------------	------------	---------------

Sales/Rental/3<sup>rd</sup> Party (HES)

Description	Qty	Qty uom	Depth	Supplier
CMT CASING EQUIPMENT BOM	1	JOB		
SHOE,FLT,7 8RD,2-3/4 SS II VLV	1	EA		
CLR,FLT,7 8RD 17-26PPF,2-3/4SSII	1	EA		
CTRZR ASSY,API,7 CSG X 8 3/4HOLE,HNGD	40	EA		
Description	Qty	Qty uom	Depth	Supplier
CTRZR ASSY,SPRL BL,LEFT HD,7 CSG X 8	20	EA		
CLAMP - LIMIT - 7 - HINGED -	1	EA		
PLUG,CMTG,TOP,7,HWE,5.66 MIN/6.54 MAX CS	1	EA		
PLUG,CMTG,BOT,7,HWE,5.66 MIN/6.54 MAX CS	1	EA		



KIT,HALL WELD-A					2	EA			
Fluid Data									
Stage/Plug #: 1									
Fluid #	Stage Type	Fluid Name	Qty	Qty uom	Mixing Density lbm/gal	Yield ft3/sk	Mix Fluid Gal/sk	Rate bbl/min	Total Mix Fluid Gal/sk
2	TUNED SPACER III	TUNED SPACER III - SBM (483826)	30.00	bbl	10.	5.86	38.0	3.5	
39.07 gal/bbl		FRESH WATER							
61.01 lbm/bbl		BARITE, BULK (100003681)							
3	TUNED LIGHT (TM) B1	TUNED LIGHT (TM) SYSTEM (452984)	332.0	sacks	10.	2.32	8.73	4	8.73
8.73 Gal		FRESH WATER							
4	VARICEM B1	VARICEM (TM) CEMENT (452009)	317.0	sacks	13.	1.95	9.83	6	9.83
9.83 Gal		FRESH WATER							
5	DISPLACEMENT		288.8	bbl	8.4			7	
The Information Stated Herein Is Correct			Customer Representative Signature						

