



Bill Barrett Corporation

COMPANY DETAILS: BILL BARRETT CORP

Calculation Method: Minimum Curvature
Error System: ISCWSA
Scan Method: Closest Approach 3D
Error Surface: Elliptical Conic
Warning Method: Error Ratio

REFERENCE INFORMATION

Co-ordinate (N/E) Reference: Well Anschutz State 5-62-35-4841CH2, True North
Vertical (TVD) Reference: KB @ 4602.0ft (Original Well Elev)
Section (VS) Reference: Slot - (0.0N, 0.0E)
Measured Depth Reference: KB @ 4602.0ft (Original Well Elev)
Calculation Method: Minimum Curvature

WELL DETAILS: Anschutz State 5-62-35-4841CH2

+N/-S	+E/-W	Northing	Easting	Latitude	Longitude
0.0	0.0	1373840.84	3334855.42	40° 21' 12.121 N	104° 17' 54.532 W

SECTION DETAILS

Sec	MD	Inc	Azi	TVD	+N/-S	+E/-W	DLeg	TFace	VSec	Target
1	0.0	0.00	0.00	0.0	0.0	0.0	0.00	0.00	0.0	
2	800.0	0.00	0.00	800.0	0.0	0.0	0.00	0.00	0.0	
3	1233.8	8.68	318.92	1232.2	24.7	-21.5	2.00	318.92	-19.8	
4	5110.4	8.68	318.92	5064.4	465.6	-405.8	0.00	0.00	-373.1	
5	5544.2	0.00	88.99	5496.5	490.3	-427.3	2.00	180.00	-392.9	
6	5794.2	0.00	88.99	5746.5	490.3	-427.3	0.00	88.99	-392.9	
7	6546.3	90.25	88.99	6224.0	498.7	52.1	12.00	88.99	86.0	Anschutz State 5-62-35-4841CH2_LP
8	16315.3	90.25	88.99	6182.0	670.8	9819.5	0.00	0.00	9842.4	Anschutz State 5-62-35-4841CH2_PBH

PROJECT DETAILS: WELD COUNTY, COLORADO

Geodetic System: US State Plane 1983
Datum: North American Datum 1983
Ellipsoid: GRS 1980
Zone: Colorado Northern Zone

FORMATION TOP DETAILS

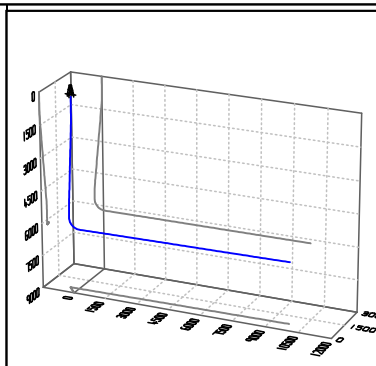
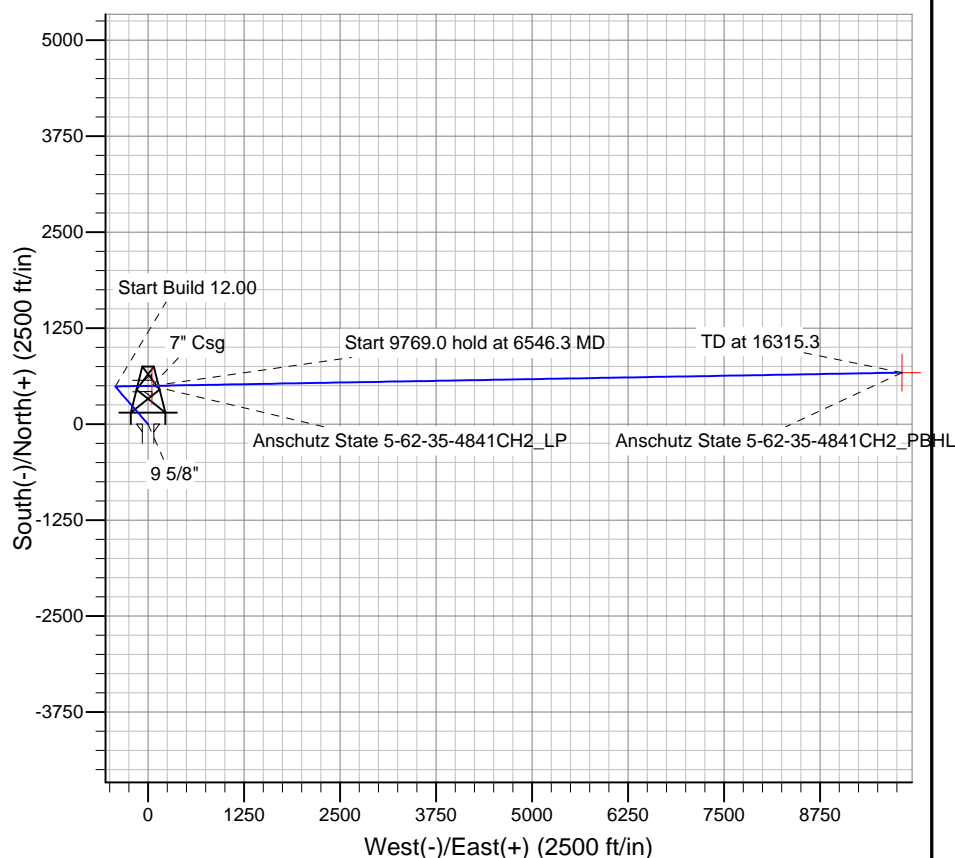
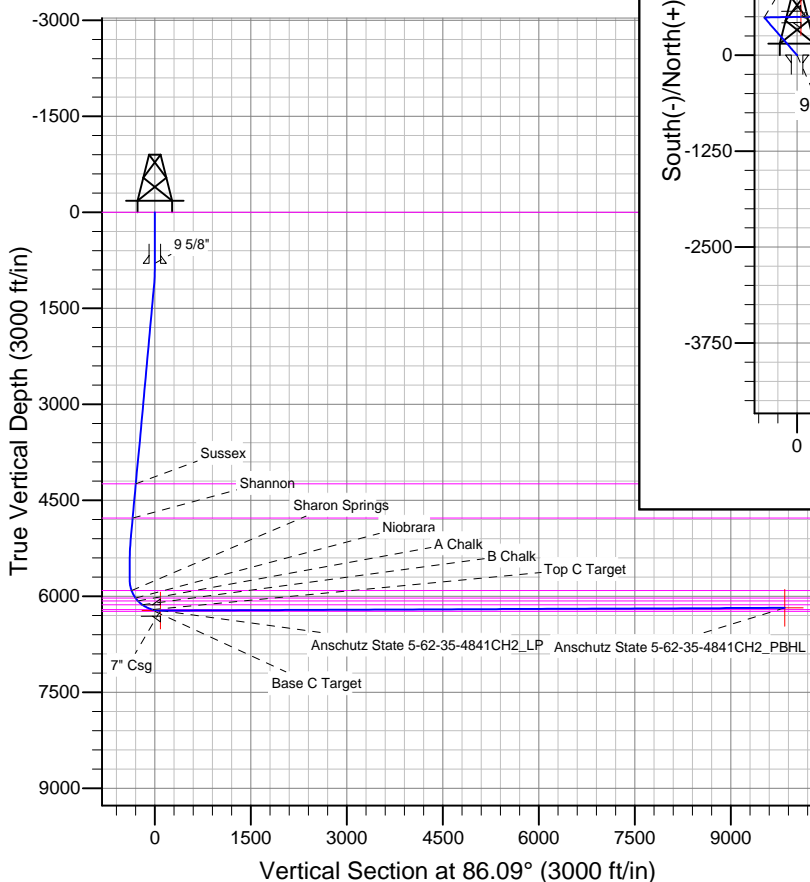
TVDPath	MDPath	Formation
0.0	0.0	Base C Target
4243.0	4279.5	Base of Fox Hills (Outcrop)
4777.0	4819.7	Sussex
5912.0	5963.2	Shannon
6028.0	6095.2	Sharon Springs
6074.0	6155.1	Niobrara
6134.0	6246.2	A Chalk
6209.0	6424.2	B Chalk
		Top C Target

CASING DETAILS

TVD	MD	Name	Size
800.0	800.0	9 5/8"	9-5/8
6224.0	6546.0	7" Csg	7

WELLBORE TARGET DETAILS

Name	TVD	+N/-S	+E/-W	Shape
Anschutz State 5-62-35-4841CH2_PBH	6182.0	670.8	9819.5	Point
Anschutz State 5-62-35-4841CH2_LP	6224.0	498.7	52.1	Point



Azimuths to True North
Magnetic North: 8.14°

Magnetic Field
Strength: 52795.1snT
Dip Angle: 66.97°
Date: 11/20/2014
Model: IGRF2010

BILL BARRETT CORP

WELD COUNTY, COLORADO

Anschutz State 5-62-35 NWSW Pad

Anschutz State 5-62-35-4841CH2

Wellbore #1

Plan: Design #1

Standard Planning Report

20 November, 2014

Bill Barrett Corp
Planning Report

Database:	Compass	Local Co-ordinate Reference:	Well Anschutz State 5-62-35-4841CH2
Company:	BILL BARRETT CORP	TVD Reference:	KB @ 4602.0ft (Original Well Elev)
Project:	WELD COUNTY, COLORADO	MD Reference:	KB @ 4602.0ft (Original Well Elev)
Site:	Anschutz State 5-62-35 NWSW Pad	North Reference:	True
Well:	Anschutz State 5-62-35-4841CH2	Survey Calculation Method:	Minimum Curvature
Wellbore:	Wellbore #1		
Design:	Design #1		

Project	WELD COUNTY, COLORADO		
Map System:	US State Plane 1983	System Datum:	Mean Sea Level
Geo Datum:	North American Datum 1983		
Map Zone:	Colorado Northern Zone		

Site		Anschutz State 5-62-35 NWSW Pad				
Site Position:		Northing:	1,373,777.32 ft	Latitude:	40° 21' 11.520 N	
From:	Lat/Long	Easting:	3,334,656.71 ft	Longitude:	104° 17' 57.109 W	
Position Uncertainty:		0.0 ft	Slot Radius:	"	Grid Convergence:	0.78 °

Well	Anschutz State 5-62-35-4841CH2					
Well Position	+N-S	60.8 ft	Northing:	1,373,840.84 ft	Latitude:	40° 21' 12.121 N
	+E-W	199.6 ft	Easting:	3,334,855.42 ft	Longitude:	104° 17' 54.532 W
Position Uncertainty		0.0 ft	Wellhead Elevation:	ft	Ground Level:	4,581.0ft

Wellbore	Wellbore #1				
-----------------	-------------	--	--	--	--

Magnetics	Model Name	Sample Date	Declination (°)	Dip Angle (°)	Field Strength (nT)
	IGRF2010	11/20/2014	8.14	66.97	52,795

Design	Design #1				
---------------	-----------	--	--	--	--

Audit Notes:					
Version:		Phase:	PLAN	Tie On Depth:	0.0
Vertical Section:	Depth From (TVD)	+N/-S	+E/-W	Direction	
	(ft)	(ft)	(ft)	(°)	
	0.0	0.0	0.0	86.09	

Plan Sections										
Measured Depth (ft)	Inclination (°)	Azimuth (°)	Vertical Depth (ft)	+N/-S (ft)	+E/-W (ft)	Dogleg Rate (°/100ft)	Build Rate (°/100ft)	Turn Rate (°/100ft)	TFO (°)	Target
0.0	0.00	0.00	0.0	0.0	0.0	0.00	0.00	0.00	0.00	
800.0	0.00	0.00	800.0	0.0	0.0	0.00	0.00	0.00	0.00	
1,233.8	8.68	318.92	1,232.2	24.7	-21.5	2.00	2.00	0.00	318.92	
5,110.4	8.68	318.92	5,064.4	465.6	-405.8	0.00	0.00	0.00	0.00	
5,544.2	0.00	88.99	5,496.5	490.3	-427.3	2.00	-2.00	0.00	180.00	
5,794.2	0.00	88.99	5,746.5	490.3	-427.3	0.00	0.00	0.00	88.99	
6,546.3	90.25	88.99	6,224.0	498.7	52.1	12.00	12.00	0.00	88.99	Anschutz State 5-6;
16,315.3	90.25	88.99	6,182.0	670.8	9,819.5	0.00	0.00	0.00	0.00	Anschutz State 5-6;

Bill Barrett Corp
Planning Report

Database:	Compass	Local Co-ordinate Reference:	Well Anschutz State 5-62-35-4841CH2
Company:	BILL BARRETT CORP	TVD Reference:	KB @ 4602.0ft (Original Well Elev)
Project:	WELD COUNTY, COLORADO	MD Reference:	KB @ 4602.0ft (Original Well Elev)
Site:	Anschutz State 5-62-35 NWSW Pad	North Reference:	True
Well:	Anschutz State 5-62-35-4841CH2	Survey Calculation Method:	Minimum Curvature
Wellbore:	Wellbore #1		
Design:	Design #1		

Planned Survey									
Measured Depth (ft)	Inclination (°)	Azimuth (°)	Vertical Depth (ft)	+N/-S (ft)	+E/-W (ft)	Vertical Section (ft)	Dogleg Rate (°/100ft)	Build Rate (°/100ft)	Turn Rate (°/100ft)
0.0	0.00	0.00	0.0	0.0	0.0	0.0	0.00	0.00	0.00
Base of Fox Hills (Outcrop)									
100.0	0.00	0.00	100.0	0.0	0.0	0.0	0.00	0.00	0.00
200.0	0.00	0.00	200.0	0.0	0.0	0.0	0.00	0.00	0.00
300.0	0.00	0.00	300.0	0.0	0.0	0.0	0.00	0.00	0.00
400.0	0.00	0.00	400.0	0.0	0.0	0.0	0.00	0.00	0.00
500.0	0.00	0.00	500.0	0.0	0.0	0.0	0.00	0.00	0.00
600.0	0.00	0.00	600.0	0.0	0.0	0.0	0.00	0.00	0.00
700.0	0.00	0.00	700.0	0.0	0.0	0.0	0.00	0.00	0.00
800.0	0.00	0.00	800.0	0.0	0.0	0.0	0.00	0.00	0.00
9 5/8"									
900.0	2.00	318.92	900.0	1.3	-1.1	-1.1	2.00	2.00	0.00
1,000.0	4.00	318.92	999.8	5.3	-4.6	-4.2	2.00	2.00	0.00
1,100.0	6.00	318.92	1,099.5	11.8	-10.3	-9.5	2.00	2.00	0.00
1,200.0	8.00	318.92	1,198.7	21.0	-18.3	-16.8	2.00	2.00	0.00
1,233.8	8.68	318.92	1,232.2	24.7	-21.5	-19.8	2.00	2.00	0.00
1,300.0	8.68	318.92	1,297.6	32.2	-28.1	-25.8	0.00	0.00	0.00
1,400.0	8.68	318.92	1,396.4	43.6	-38.0	-35.0	0.00	0.00	0.00
1,500.0	8.68	318.92	1,495.3	55.0	-47.9	-44.1	0.00	0.00	0.00
1,600.0	8.68	318.92	1,594.2	66.4	-57.8	-53.2	0.00	0.00	0.00
1,700.0	8.68	318.92	1,693.0	77.7	-67.7	-62.3	0.00	0.00	0.00
1,800.0	8.68	318.92	1,791.9	89.1	-77.7	-71.4	0.00	0.00	0.00
1,900.0	8.68	318.92	1,890.7	100.5	-87.6	-80.5	0.00	0.00	0.00
2,000.0	8.68	318.92	1,989.6	111.8	-97.5	-89.6	0.00	0.00	0.00
2,100.0	8.68	318.92	2,088.4	123.2	-107.4	-98.7	0.00	0.00	0.00
2,200.0	8.68	318.92	2,187.3	134.6	-117.3	-107.9	0.00	0.00	0.00
2,300.0	8.68	318.92	2,286.1	146.0	-127.2	-117.0	0.00	0.00	0.00
2,400.0	8.68	318.92	2,385.0	157.3	-137.1	-126.1	0.00	0.00	0.00
2,500.0	8.68	318.92	2,483.9	168.7	-147.0	-135.2	0.00	0.00	0.00
2,600.0	8.68	318.92	2,582.7	180.1	-157.0	-144.3	0.00	0.00	0.00
2,700.0	8.68	318.92	2,681.6	191.5	-166.9	-153.4	0.00	0.00	0.00
2,800.0	8.68	318.92	2,780.4	202.8	-176.8	-162.5	0.00	0.00	0.00
2,900.0	8.68	318.92	2,879.3	214.2	-186.7	-171.7	0.00	0.00	0.00
3,000.0	8.68	318.92	2,978.1	225.6	-196.6	-180.8	0.00	0.00	0.00
3,100.0	8.68	318.92	3,077.0	236.9	-206.5	-189.9	0.00	0.00	0.00
3,200.0	8.68	318.92	3,175.8	248.3	-216.4	-199.0	0.00	0.00	0.00
3,300.0	8.68	318.92	3,274.7	259.7	-226.3	-208.1	0.00	0.00	0.00
3,400.0	8.68	318.92	3,373.6	271.1	-236.3	-217.2	0.00	0.00	0.00
3,500.0	8.68	318.92	3,472.4	282.4	-246.2	-226.3	0.00	0.00	0.00
3,600.0	8.68	318.92	3,571.3	293.8	-256.1	-235.5	0.00	0.00	0.00
3,700.0	8.68	318.92	3,670.1	305.2	-266.0	-244.6	0.00	0.00	0.00
3,800.0	8.68	318.92	3,769.0	316.5	-275.9	-253.7	0.00	0.00	0.00
3,900.0	8.68	318.92	3,867.8	327.9	-285.8	-262.8	0.00	0.00	0.00
4,000.0	8.68	318.92	3,966.7	339.3	-295.7	-271.9	0.00	0.00	0.00
4,100.0	8.68	318.92	4,065.5	350.7	-305.6	-281.0	0.00	0.00	0.00
4,200.0	8.68	318.92	4,164.4	362.0	-315.5	-290.1	0.00	0.00	0.00
4,279.5	8.68	318.92	4,243.0	371.1	-323.4	-297.4	0.00	0.00	0.00
Sussex									
4,300.0	8.68	318.92	4,263.3	373.4	-325.5	-299.3	0.00	0.00	0.00
4,400.0	8.68	318.92	4,362.1	384.8	-335.4	-308.4	0.00	0.00	0.00
4,500.0	8.68	318.92	4,461.0	396.2	-345.3	-317.5	0.00	0.00	0.00
4,600.0	8.68	318.92	4,559.8	407.5	-355.2	-326.6	0.00	0.00	0.00
4,700.0	8.68	318.92	4,658.7	418.9	-365.1	-335.7	0.00	0.00	0.00

Bill Barrett Corp
Planning Report

Database:	Compass	Local Co-ordinate Reference:	Well Anschutz State 5-62-35-4841CH2
Company:	BILL BARRETT CORP	TVD Reference:	KB @ 4602.0ft (Original Well Elev)
Project:	WELD COUNTY, COLORADO	MD Reference:	KB @ 4602.0ft (Original Well Elev)
Site:	Anschutz State 5-62-35 NWSW Pad	North Reference:	True
Well:	Anschutz State 5-62-35-4841CH2	Survey Calculation Method:	Minimum Curvature
Wellbore:	Wellbore #1		
Design:	Design #1		

Planned Survey									
Measured Depth (ft)	Inclination (°)	Azimuth (°)	Vertical Depth (ft)	+N/-S (ft)	+E/-W (ft)	Vertical Section (ft)	Dogleg Rate (°/100ft)	Build Rate (°/100ft)	Turn Rate (°/100ft)
4,800.0	8.68	318.92	4,757.5	430.3	-375.0	-344.8	0.00	0.00	0.00
4,819.7	8.68	318.92	4,777.0	432.5	-377.0	-346.6	0.00	0.00	0.00
Shannon									
4,900.0	8.68	318.92	4,856.4	441.6	-384.9	-353.9	0.00	0.00	0.00
5,000.0	8.68	318.92	4,955.2	453.0	-394.8	-363.1	0.00	0.00	0.00
5,100.0	8.68	318.92	5,054.1	464.4	-404.8	-372.2	0.00	0.00	0.00
5,110.4	8.68	318.92	5,064.4	465.6	-405.8	-373.1	0.00	0.00	0.00
5,200.0	6.88	318.92	5,153.2	474.7	-413.8	-380.4	2.00	-2.00	0.00
5,300.0	4.88	318.92	5,252.6	482.4	-420.5	-386.6	2.00	-2.00	0.00
5,400.0	2.88	318.92	5,352.4	487.6	-424.9	-390.7	2.00	-2.00	0.00
5,500.0	0.88	318.92	5,452.3	490.0	-427.1	-392.7	2.00	-2.00	0.00
5,544.2	0.00	88.99	5,496.5	490.3	-427.3	-392.9	2.00	-2.00	0.00
5,600.0	0.00	88.99	5,552.3	490.3	-427.3	-392.9	0.00	0.00	0.00
5,700.0	0.00	88.99	5,652.3	490.3	-427.3	-392.9	0.00	0.00	0.00
5,794.2	0.00	88.99	5,746.5	490.3	-427.3	-392.9	0.00	0.00	0.00
5,800.0	0.69	88.99	5,752.3	490.3	-427.3	-392.9	12.00	12.00	0.00
5,900.0	12.69	88.99	5,851.5	490.5	-415.7	-381.3	12.00	12.00	0.00
5,963.2	20.28	88.99	5,912.0	490.8	-397.7	-363.4	12.00	12.00	0.00
Sharon Springs									
6,000.0	24.69	88.99	5,946.0	491.1	-383.7	-349.3	12.00	12.00	0.00
6,095.2	36.12	88.99	6,028.0	491.9	-335.6	-301.3	12.00	12.00	0.00
Niobrara									
6,100.0	36.69	88.99	6,031.8	492.0	-332.7	-298.4	12.00	12.00	0.00
6,155.1	43.30	88.99	6,074.0	492.6	-297.4	-263.1	12.00	12.00	0.00
A Chalk									
6,200.0	48.69	88.99	6,105.2	493.1	-265.1	-230.8	12.00	12.00	0.00
6,246.2	54.24	88.99	6,134.0	493.8	-228.9	-194.7	12.00	12.00	0.00
B Chalk									
6,300.0	60.69	88.99	6,162.9	494.6	-183.6	-149.5	12.00	12.00	0.00
6,400.0	72.69	88.99	6,202.4	496.2	-91.9	-57.9	12.00	12.00	0.00
6,424.2	75.60	88.99	6,209.0	496.6	-68.7	-34.7	12.00	12.00	0.00
Top C Target									
6,500.0	84.69	88.99	6,222.0	497.9	5.9	39.8	12.00	12.00	0.00
6,546.0	90.21	88.99	6,224.0	498.7	51.8	85.7	12.00	12.00	0.00
7" Csg									
6,546.3	90.25	88.99	6,224.0	498.7	52.1	86.0	12.00	12.00	0.00
6,600.0	90.25	88.99	6,223.8	499.7	105.8	139.6	0.00	0.00	0.00
6,700.0	90.25	88.99	6,223.3	501.4	205.8	239.5	0.00	0.00	0.00
6,800.0	90.25	88.99	6,222.9	503.2	305.8	339.4	0.00	0.00	0.00
6,900.0	90.25	88.99	6,222.5	505.0	405.8	439.3	0.00	0.00	0.00
7,000.0	90.25	88.99	6,222.0	506.7	505.8	539.1	0.00	0.00	0.00
7,100.0	90.25	88.99	6,221.6	508.5	605.8	639.0	0.00	0.00	0.00
7,200.0	90.25	88.99	6,221.2	510.2	705.7	738.9	0.00	0.00	0.00
7,300.0	90.25	88.99	6,220.8	512.0	805.7	838.7	0.00	0.00	0.00
7,400.0	90.25	88.99	6,220.3	513.8	905.7	938.6	0.00	0.00	0.00
7,500.0	90.25	88.99	6,219.9	515.5	1,005.7	1,038.5	0.00	0.00	0.00
7,600.0	90.25	88.99	6,219.5	517.3	1,105.7	1,138.4	0.00	0.00	0.00
7,700.0	90.25	88.99	6,219.0	519.1	1,205.7	1,238.2	0.00	0.00	0.00
7,800.0	90.25	88.99	6,218.6	520.8	1,305.6	1,338.1	0.00	0.00	0.00
7,900.0	90.25	88.99	6,218.2	522.6	1,405.6	1,438.0	0.00	0.00	0.00
8,000.0	90.25	88.99	6,217.7	524.3	1,505.6	1,537.8	0.00	0.00	0.00
8,100.0	90.25	88.99	6,217.3	526.1	1,605.6	1,637.7	0.00	0.00	0.00
8,200.0	90.25	88.99	6,216.9	527.9	1,705.6	1,737.6	0.00	0.00	0.00

Bill Barrett Corp

Planning Report

Database:	Compass	Local Co-ordinate Reference:	Well Anschutz State 5-62-35-4841CH2
Company:	BILL BARRETT CORP	TVD Reference:	KB @ 4602.0ft (Original Well Elev)
Project:	WELD COUNTY, COLORADO	MD Reference:	KB @ 4602.0ft (Original Well Elev)
Site:	Anschutz State 5-62-35 NWSW Pad	North Reference:	True
Well:	Anschutz State 5-62-35-4841CH2	Survey Calculation Method:	Minimum Curvature
Wellbore:	Wellbore #1		
Design:	Design #1		

Planned Survey									
Measured Depth (ft)	Inclination (°)	Azimuth (°)	Vertical Depth (ft)	+N/-S (ft)	+E/-W (ft)	Vertical Section (ft)	Dogleg Rate (°/100ft)	Build Rate (°/100ft)	Turn Rate (°/100ft)
8,300.0	90.25	88.99	6,216.5	529.6	1,805.6	1,837.5	0.00	0.00	0.00
8,400.0	90.25	88.99	6,216.0	531.4	1,905.5	1,937.3	0.00	0.00	0.00
8,500.0	90.25	88.99	6,215.6	533.1	2,005.5	2,037.2	0.00	0.00	0.00
8,600.0	90.25	88.99	6,215.2	534.9	2,105.5	2,137.1	0.00	0.00	0.00
8,700.0	90.25	88.99	6,214.7	536.7	2,205.5	2,236.9	0.00	0.00	0.00
8,800.0	90.25	88.99	6,214.3	538.4	2,305.5	2,336.8	0.00	0.00	0.00
8,900.0	90.25	88.99	6,213.9	540.2	2,405.5	2,436.7	0.00	0.00	0.00
9,000.0	90.25	88.99	6,213.5	542.0	2,505.4	2,536.6	0.00	0.00	0.00
9,100.0	90.25	88.99	6,213.0	543.7	2,605.4	2,636.4	0.00	0.00	0.00
9,200.0	90.25	88.99	6,212.6	545.5	2,705.4	2,736.3	0.00	0.00	0.00
9,300.0	90.25	88.99	6,212.2	547.2	2,805.4	2,836.2	0.00	0.00	0.00
9,400.0	90.25	88.99	6,211.7	549.0	2,905.4	2,936.0	0.00	0.00	0.00
9,500.0	90.25	88.99	6,211.3	550.8	3,005.4	3,035.9	0.00	0.00	0.00
9,600.0	90.25	88.99	6,210.9	552.5	3,105.3	3,135.8	0.00	0.00	0.00
9,700.0	90.25	88.99	6,210.4	554.3	3,205.3	3,235.7	0.00	0.00	0.00
9,800.0	90.25	88.99	6,210.0	556.0	3,305.3	3,335.5	0.00	0.00	0.00
9,900.0	90.25	88.99	6,209.6	557.8	3,405.3	3,435.4	0.00	0.00	0.00
10,000.0	90.25	88.99	6,209.2	559.6	3,505.3	3,535.3	0.00	0.00	0.00
10,100.0	90.25	88.99	6,208.7	561.3	3,605.3	3,635.1	0.00	0.00	0.00
10,200.0	90.25	88.99	6,208.3	563.1	3,705.2	3,735.0	0.00	0.00	0.00
10,300.0	90.25	88.99	6,207.9	564.9	3,805.2	3,834.9	0.00	0.00	0.00
10,400.0	90.25	88.99	6,207.4	566.6	3,905.2	3,934.7	0.00	0.00	0.00
10,500.0	90.25	88.99	6,207.0	568.4	4,005.2	4,034.6	0.00	0.00	0.00
10,600.0	90.25	88.99	6,206.6	570.1	4,105.2	4,134.5	0.00	0.00	0.00
10,700.0	90.25	88.99	6,206.1	571.9	4,205.2	4,234.4	0.00	0.00	0.00
10,800.0	90.25	88.99	6,205.7	573.7	4,305.1	4,334.2	0.00	0.00	0.00
10,900.0	90.25	88.99	6,205.3	575.4	4,405.1	4,434.1	0.00	0.00	0.00
11,000.0	90.25	88.99	6,204.9	577.2	4,505.1	4,534.0	0.00	0.00	0.00
11,100.0	90.25	88.99	6,204.4	578.9	4,605.1	4,633.8	0.00	0.00	0.00
11,200.0	90.25	88.99	6,204.0	580.7	4,705.1	4,733.7	0.00	0.00	0.00
11,300.0	90.25	88.99	6,203.6	582.5	4,805.1	4,833.6	0.00	0.00	0.00
11,400.0	90.25	88.99	6,203.1	584.2	4,905.0	4,933.5	0.00	0.00	0.00
11,500.0	90.25	88.99	6,202.7	586.0	5,005.0	5,033.3	0.00	0.00	0.00
11,600.0	90.25	88.99	6,202.3	587.8	5,105.0	5,133.2	0.00	0.00	0.00
11,700.0	90.25	88.99	6,201.8	589.5	5,205.0	5,233.1	0.00	0.00	0.00
11,800.0	90.25	88.99	6,201.4	591.3	5,305.0	5,332.9	0.00	0.00	0.00
11,900.0	90.25	88.99	6,201.0	593.0	5,405.0	5,432.8	0.00	0.00	0.00
12,000.0	90.25	88.99	6,200.6	594.8	5,504.9	5,532.7	0.00	0.00	0.00
12,100.0	90.25	88.99	6,200.1	596.6	5,604.9	5,632.6	0.00	0.00	0.00
12,200.0	90.25	88.99	6,199.7	598.3	5,704.9	5,732.4	0.00	0.00	0.00
12,300.0	90.25	88.99	6,199.3	600.1	5,804.9	5,832.3	0.00	0.00	0.00
12,400.0	90.25	88.99	6,198.8	601.8	5,904.9	5,932.2	0.00	0.00	0.00
12,500.0	90.25	88.99	6,198.4	603.6	6,004.9	6,032.0	0.00	0.00	0.00
12,600.0	90.25	88.99	6,198.0	605.4	6,104.9	6,131.9	0.00	0.00	0.00
12,700.0	90.25	88.99	6,197.5	607.1	6,204.8	6,231.8	0.00	0.00	0.00
12,800.0	90.25	88.99	6,197.1	608.9	6,304.8	6,331.7	0.00	0.00	0.00
12,900.0	90.25	88.99	6,196.7	610.7	6,404.8	6,431.5	0.00	0.00	0.00
13,000.0	90.25	88.99	6,196.3	612.4	6,504.8	6,531.4	0.00	0.00	0.00
13,100.0	90.25	88.99	6,195.8	614.2	6,604.8	6,631.3	0.00	0.00	0.00
13,200.0	90.25	88.99	6,195.4	615.9	6,704.8	6,731.1	0.00	0.00	0.00
13,300.0	90.25	88.99	6,195.0	617.7	6,804.7	6,831.0	0.00	0.00	0.00
13,400.0	90.25	88.99	6,194.5	619.5	6,904.7	6,930.9	0.00	0.00	0.00
13,500.0	90.25	88.99	6,194.1	621.2	7,004.7	7,030.8	0.00	0.00	0.00
13,600.0	90.25	88.99	6,193.7	623.0	7,104.7	7,130.6	0.00	0.00	0.00

Bill Barrett Corp

Planning Report

Database:	Compass	Local Co-ordinate Reference:	Well Anschutz State 5-62-35-4841CH2
Company:	BILL BARRETT CORP	TVD Reference:	KB @ 4602.0ft (Original Well Elev)
Project:	WELD COUNTY, COLORADO	MD Reference:	KB @ 4602.0ft (Original Well Elev)
Site:	Anschutz State 5-62-35 NWSW Pad	North Reference:	True
Well:	Anschutz State 5-62-35-4841CH2	Survey Calculation Method:	Minimum Curvature
Wellbore:	Wellbore #1		
Design:	Design #1		

Planned Survey

Measured Depth (ft)	Inclination (°)	Azimuth (°)	Vertical Depth (ft)	+N/-S (ft)	+E/-W (ft)	Vertical Section (ft)	Dogleg Rate (°/100ft)	Build Rate (°/100ft)	Turn Rate (°/100ft)
13,700.0	90.25	88.99	6,193.2	624.7	7,204.7	7,230.5	0.00	0.00	0.00
13,800.0	90.25	88.99	6,192.8	626.5	7,304.7	7,330.4	0.00	0.00	0.00
13,900.0	90.25	88.99	6,192.4	628.3	7,404.6	7,430.2	0.00	0.00	0.00
14,000.0	90.25	88.99	6,192.0	630.0	7,504.6	7,530.1	0.00	0.00	0.00
14,100.0	90.25	88.99	6,191.5	631.8	7,604.6	7,630.0	0.00	0.00	0.00
14,200.0	90.25	88.99	6,191.1	633.5	7,704.6	7,729.9	0.00	0.00	0.00
14,300.0	90.25	88.99	6,190.7	635.3	7,804.6	7,829.7	0.00	0.00	0.00
14,400.0	90.25	88.99	6,190.2	637.1	7,904.6	7,929.6	0.00	0.00	0.00
14,500.0	90.25	88.99	6,189.8	638.8	8,004.5	8,029.5	0.00	0.00	0.00
14,600.0	90.25	88.99	6,189.4	640.6	8,104.5	8,129.3	0.00	0.00	0.00
14,700.0	90.25	88.99	6,188.9	642.4	8,204.5	8,229.2	0.00	0.00	0.00
14,800.0	90.25	88.99	6,188.5	644.1	8,304.5	8,329.1	0.00	0.00	0.00
14,900.0	90.25	88.99	6,188.1	645.9	8,404.5	8,429.0	0.00	0.00	0.00
15,000.0	90.25	88.99	6,187.7	647.6	8,504.5	8,528.8	0.00	0.00	0.00
15,100.0	90.25	88.99	6,187.2	649.4	8,604.4	8,628.7	0.00	0.00	0.00
15,200.0	90.25	88.99	6,186.8	651.2	8,704.4	8,728.6	0.00	0.00	0.00
15,300.0	90.25	88.99	6,186.4	652.9	8,804.4	8,828.4	0.00	0.00	0.00
15,400.0	90.25	88.99	6,185.9	654.7	8,904.4	8,928.3	0.00	0.00	0.00
15,500.0	90.25	88.99	6,185.5	656.4	9,004.4	9,028.2	0.00	0.00	0.00
15,600.0	90.25	88.99	6,185.1	658.2	9,104.4	9,128.0	0.00	0.00	0.00
15,700.0	90.25	88.99	6,184.6	660.0	9,204.3	9,227.9	0.00	0.00	0.00
15,800.0	90.25	88.99	6,184.2	661.7	9,304.3	9,327.8	0.00	0.00	0.00
15,900.0	90.25	88.99	6,183.8	663.5	9,404.3	9,427.7	0.00	0.00	0.00
16,000.0	90.25	88.99	6,183.4	665.3	9,504.3	9,527.5	0.00	0.00	0.00
16,100.0	90.25	88.99	6,182.9	667.0	9,604.3	9,627.4	0.00	0.00	0.00
16,200.0	90.25	88.99	6,182.5	668.8	9,704.3	9,727.3	0.00	0.00	0.00
16,300.0	90.25	88.99	6,182.1	670.5	9,804.2	9,827.1	0.00	0.00	0.00
16,315.3	90.25	88.99	6,182.0	670.8	9,819.5	9,842.4	0.00	0.00	0.00

Casing Points

Measured Depth (ft)	Vertical Depth (ft)	Name	Casing Diameter (")	Hole Diameter (")
800.0	800.0	9 5/8"	9-5/8	13-1/2
6,546.0	6,224.0	7" Csg	7	8-3/4

Formations

Measured Depth (ft)	Vertical Depth (ft)	Name	Lithology	Dip (°)	Dip Direction (°)
0.0	0.0	Base of Fox Hills (Outcrop)		0.00	
4,279.5	4,243.0	Sussex		0.00	
4,819.7	4,777.0	Shannon		0.00	
5,963.2	5,912.0	Sharon Springs		0.00	
6,095.2	6,028.0	Niobrara		0.00	
6,155.1	6,074.0	A Chalk		0.00	
6,246.2	6,134.0	B Chalk		0.00	
6,424.2	6,209.0	Top C Target		0.00	
	6,234.0	Base C Target		0.00	