

T7S, R97W, 6th P.M.

1920 Brass Cap,  
1.5' High  
Lat: 39.481792°  
Long: 108.196089°

1920 Brass Cap,  
0.6' High, Steel  
Post  
Lat: 39.481786°  
Long: 108.178033°

Caerus Oil & Gas LLC

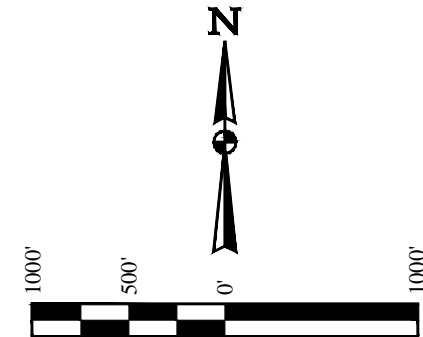
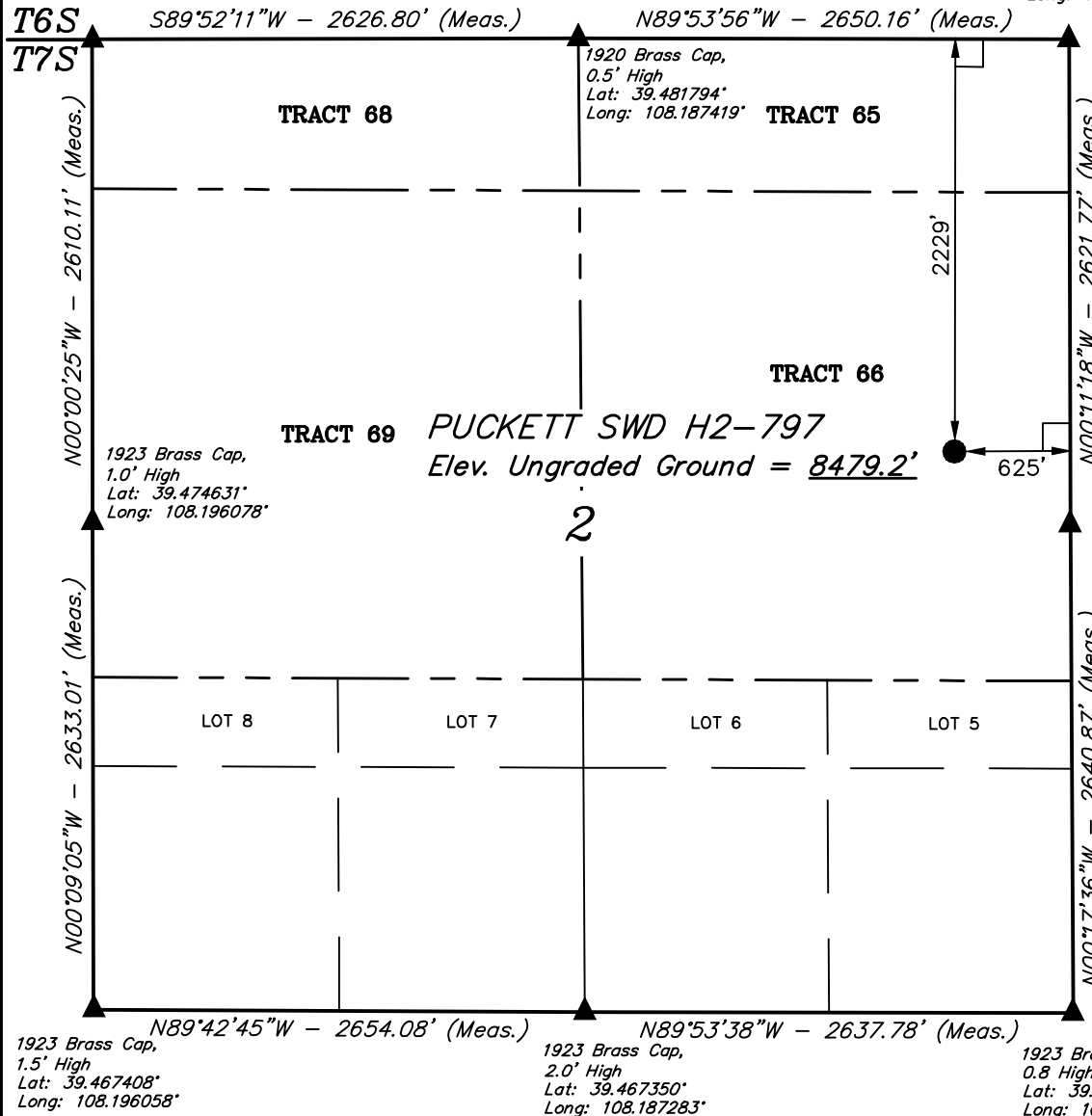
PUCKETT SWD H2-797  
TRACT 66, SECTION 2, T7S, R97W, 6th P.M.  
GARFIELD COUNTY, COLORADO

**BASIS OF BEARINGS**

BASIS OF BEARINGS IS A G.P.S. OBSERVATION

**BASIS OF ELEVATION**

SPOT ELEVATION AT THE NORTHWEST CORNER OF SECTION 30,  
T5S, R95W, 6th P.M. TAKEN FROM THE FORKED GULCH  
QUADRANGLE, COLORADO, GARFIELD COUNTY, 7.5 MINUTE SERIES  
(TOPOGRAPHICAL MAP) PUBLISHED BY THE UNITED STATES  
DEPARTMENT OF THE INTERIOR, GEOLOGICAL SURVEY. SAID  
ELEVATION IS MARKED AS BEING 5966 FEET.



**CERTIFICATE**

THIS IS TO CERTIFY THAT THE ABOVE PLAT WAS PREPARED FROM FIELD  
NOTES OF ACTUAL SURVEYS MADE BY ME OR UNDER MY SUPERVISION  
AND THAT THE SAME ARE TRUE AND CORRECT TO THE BEST OF MY  
KNOWLEDGE AND BELIEF.

*Handwritten signature: Harold Marshall*  
REGISTERED LAND SURVEYOR  
REGISTRATION NO. 12810  
STATE OF COLORADO 12-02-14

PDOP = 1.3

NAD 83 (SURFACE LOCATION)	
LATITUDE = 39°28'32.41" (39.475669)	
LONGITUDE = 108°10'48.78" (108.180217)	
NAD 27 (SURFACE LOCATION)	
LATITUDE = 39°28'32.49" (39.475692)	
LONGITUDE = 108°10'46.49" (108.179581)	



**UELS, LLC**  
Corporate Office \* 85 South 200 East  
Vernal, UT 84078 \* (435) 789-1017

SURVEYED BY: JARED CHRISTOPHER, B.B.	DATE: 08-19-14
DRAWN BY: M.D.	DATE DRAWN: 09-12-14
SCALE: 1" = 1000'	REVISED: 12-02-14 M.D.

**WELL LOCATION PLAT**