

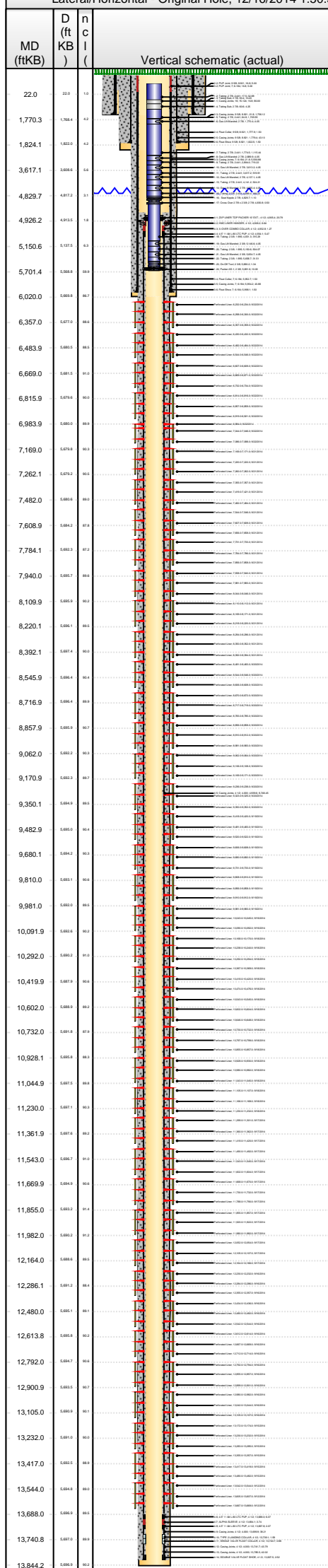


Lease Review

Well Name: RAZOR FEDERAL 26L-2302B

Header information table including API Number (051233833900), WPC ID (1CO0761031), Well Permit Number, Field Name (DJ Horizontal Niobrara), County (Weld), State (CO), Well Configuration Type (Lateral/Horizontal), Orig KB Elv (ft) (4,751.00), Ground Elevation (ft) (4,734.20), Casing Flange Elevation (ft), Tubing Head Elevation (ft), Total Depth (ftKB) (13,844.0), Original Spud Date (4/2/2014), Completion Date (9/22/2014), Asset Group (Redtail), Responsible Engineer (Andrew Fish), N/S Dist (ft) (2,244.0), N/S Ref (FSL), E/W Dist (ft) (593.0), E/W Ref (FWL), Lot, Quarter 1 (NW), Quarter 2 (SW), Quarter 3, Quarter 4, Section (26), Section Suffix, Section Type, Township (10 N), Township N/S Dir, Range (58 W), Range E/W Dir, Meridian.

Lateral/Horizontal - Original Hole, 12/16/2014 1:50:37 PM



Wellbore Sections

Table with columns: Section Des, Wellbore Name, Start Date, Size (in), Act Top (ftKB), Act Btm (ftKB). Rows include Conductor, Surface, Intermediate, and Lateral sections.

Conductor Pipe, 96.8ftKB table with columns: OD (in), Wt (lb/ft), Grade, Top (ftKB), Btm (ftKB), Len (ft), Item Des. Row: 16, 75.00, J-55, 16.8, 96.8, 80.00, Casing Joints.

Surface Csg, 1,824.0ftKB table with columns: OD (in), Wt (lb/ft), Grade, Top (ftKB), Btm (ftKB), Len (ft), Item Des. Rows include Landing Joint, PUP Joint, Casing Joints, Float Collar, and Float Shoe.

Intermediate Csg, 5,999.6ftKB table with columns: OD (in), Wt (lb/ft), Grade, Top (ftKB), Btm (ftKB), Len (ft), Item Des. Rows include Landing Joint, PUP Joint, Casing Joints, Float Collar, and Float Shoe.

Liner, 13,830.0ftKB table with columns: OD (in), Wt (lb/ft), Grade, Top (ftKB), Btm (ftKB), Len (ft), Item Des. Rows include ZXP LINER TOP PACKER, HMC LINER HANGER, X-OVER COMBO COLLAR, 4.5" 11.6# L-80 LTC PUP, ALPHA SLEEVE, TYPE 2 LANDING COLLAR, SINGLE VALVE FLOAT COLLAR, and DOUBLE VALVE FLOAT SHOE.

Cement Stages table with columns: Des, Pump Start Date, Drill Out Date, Top (ftKB), Btm (ftKB), Top Meas Meth. Rows include Conductor Cement, Surface Casing Cement, Intermediate Casing Cement, and Liner Cement.

Perforations table with columns: Type of Hole, Date, Top (ftKB), Btm (ftKB), Zone. Lists multiple perforated liner intervals from 9/22/2014 to 9/21/2014, all in the Niobrara, Original Hole zone.



Lease Review

Well Name: RAZOR FEDERAL 26L-2302B

API Number 051233833900	WPC ID 1CO0761031	Well Permit Number	Field Name DJ Horizontal Niobrara	County Weld	State CO
Well Configuration Type Lateral/Horizontal	Orig KB Elv (ft) 4,751.00	Ground Elevation (ft) 4,734.20	Casing Flange Elevation (ft)	Tubing Head Elevation (ft)	Total Depth (ft)KB 13,844.0
Original Spud Date 4/2/2014	Completion Date 9/22/2014	Asset Group Redtail	Responsible Engineer Andrew Fish	N/S Dist (ft) 2,244.0	N/S Ref FSL
				E/W Dist (ft) 593.0	E/W Ref FWL
Lot	Quarter 1 NW	Quarter 2 SW	Quarter 3	Quarter 4	Section 26
					Section Suffix
					Section Type
					Township 10 N
					Township N/S Dir
					Range 58
					Range E/W Dir W
					Meridian

Lateral/Horizontal - Original Hole, 12/16/2014 1:50:38 PM			Perforations				
MD (ft)KB	D (ft)KB	nc l	Type of Hole	Date	Top (ft)KB	Btm (ft)KB	Zone
			Perforated Liner	9/21/2014	7,607.0	7,609.0	Niobrara, Original Hole
			Perforated Liner	9/21/2014	7,656.0	7,658.0	Niobrara, Original Hole
			Perforated Liner	9/21/2014	7,731.0	7,733.0	Niobrara, Original Hole
			Perforated Liner	9/21/2014	7,784.0	7,786.0	Niobrara, Original Hole
			Perforated Liner	9/21/2014	7,856.0	7,858.0	Niobrara, Original Hole
			Perforated Liner	9/21/2014	7,938.0	7,940.0	Niobrara, Original Hole
			Perforated Liner	9/21/2014	7,981.0	7,983.0	Niobrara, Original Hole
			Perforated Liner	9/21/2014	8,044.0	8,046.0	Niobrara, Original Hole
			Perforated Liner	9/21/2014	8,110.0	8,112.0	Niobrara, Original Hole
			Perforated Liner	9/21/2014	8,169.0	8,171.0	Niobrara, Original Hole
			Perforated Liner	9/21/2014	8,218.0	8,220.0	Niobrara, Original Hole
			Perforated Liner	9/21/2014	8,294.0	8,296.0	Niobrara, Original Hole
			Perforated Liner	9/21/2014	8,350.0	8,352.0	Niobrara, Original Hole
			Perforated Liner	9/21/2014	8,392.0	8,394.0	Niobrara, Original Hole
			Perforated Liner	9/20/2014	8,481.0	8,483.0	Niobrara, Original Hole
			Perforated Liner	9/20/2014	8,544.0	8,546.0	Niobrara, Original Hole
			Perforated Liner	9/20/2014	8,606.0	8,608.0	Niobrara, Original Hole
			Perforated Liner	9/20/2014	8,670.0	8,672.0	Niobrara, Original Hole
			Perforated Liner	9/20/2014	8,717.0	8,719.0	Niobrara, Original Hole
			Perforated Liner	9/20/2014	8,783.0	8,785.0	Niobrara, Original Hole
			Perforated Liner	9/20/2014	8,856.0	8,858.0	Niobrara, Original Hole
			Perforated Liner	9/20/2014	8,910.0	8,912.0	Niobrara, Original Hole
			Perforated Liner	9/20/2014	8,981.0	8,983.0	Niobrara, Original Hole
			Perforated Liner	9/20/2014	9,062.0	9,064.0	Niobrara, Original Hole
			Perforated Liner	9/20/2014	9,106.0	9,108.0	Niobrara, Original Hole
			Perforated Liner	9/20/2014	9,169.0	9,171.0	Niobrara, Original Hole
			Perforated Liner	9/20/2014	9,236.0	9,238.0	Niobrara, Original Hole
			Perforated Liner	9/20/2014	9,323.0	9,325.0	Niobrara, Original Hole
			Perforated Liner	9/20/2014	9,350.0	9,352.0	Niobrara, Original Hole
			Perforated Liner	9/19/2014	9,418.0	9,420.0	Niobrara, Original Hole
			Perforated Liner	9/19/2014	9,481.0	9,483.0	Niobrara, Original Hole
			Perforated Liner	9/19/2014	9,520.0	9,522.0	Niobrara, Original Hole
			Perforated Liner	9/19/2014	9,606.0	9,608.0	Niobrara, Original Hole
			Perforated Liner	9/19/2014	9,680.0	9,682.0	Niobrara, Original Hole
			Perforated Liner	9/19/2014	9,731.0	9,733.0	Niobrara, Original Hole
			Perforated Liner	9/19/2014	9,808.0	9,810.0	Niobrara, Original Hole
			Perforated Liner	9/19/2014	9,856.0	9,858.0	Niobrara, Original Hole
			Perforated Liner	9/19/2014	9,910.0	9,912.0	Niobrara, Original Hole
			Perforated Liner	9/19/2014	9,981.0	9,983.0	Niobrara, Original Hole
			Perforated Liner	9/19/2014	10,043.0	10,045.0	Niobrara, Original Hole
			Perforated Liner	9/19/2014	10,090.0	10,092.0	Niobrara, Original Hole
			Perforated Liner	9/18/2014	10,168.0	10,170.0	Niobrara, Original Hole
			Perforated Liner	9/18/2014	10,238.0	10,240.0	Niobrara, Original Hole
			Perforated Liner	9/18/2014	10,292.0	10,294.0	Niobrara, Original Hole
			Perforated Liner	9/18/2014	10,367.0	10,369.0	Niobrara, Original Hole
			Perforated Liner	9/18/2014	10,418.0	10,420.0	Niobrara, Original Hole
			Perforated Liner	9/18/2014	10,474.0	10,476.0	Niobrara, Original Hole
			Perforated Liner	9/18/2014	10,543.0	10,545.0	Niobrara, Original Hole
			Perforated Liner	9/18/2014	10,602.0	10,604.0	Niobrara, Original Hole
			Perforated Liner	9/18/2014	10,646.0	10,648.0	Niobrara, Original Hole
			Perforated Liner	9/18/2014	10,730.0	10,732.0	Niobrara, Original Hole
			Perforated Liner	9/18/2014	10,797.0	10,799.0	Niobrara, Original Hole
			Perforated Liner	9/18/2014	10,855.0	10,857.0	Niobrara, Original Hole
			Perforated Liner	9/18/2014	10,928.0	10,930.0	Niobrara, Original Hole
			Perforated Liner	9/18/2014	10,980.0	10,982.0	Niobrara, Original Hole
			Perforated Liner	9/18/2014	11,043.0	11,045.0	Niobrara, Original Hole
			Perforated Liner	9/18/2014	11,105.0	11,107.0	Niobrara, Original Hole
			Perforated Liner	9/18/2014	11,166.0	11,168.0	Niobrara, Original Hole
			Perforated Liner	9/18/2014	11,230.0	11,232.0	Niobrara, Original Hole
			Perforated Liner	9/17/2014	11,299.0	11,301.0	Niobrara, Original Hole
			Perforated Liner	9/17/2014	11,360.0	11,362.0	Niobrara, Original Hole
			Perforated Liner	9/17/2014	11,418.0	11,420.0	Niobrara, Original Hole
			Perforated Liner	9/17/2014	11,490.0	11,492.0	Niobrara, Original Hole
			Perforated Liner	9/17/2014	11,543.0	11,545.0	Niobrara, Original Hole
			Perforated Liner	9/17/2014	11,602.0	11,604.0	Niobrara, Original Hole
			Perforated Liner	9/17/2014	11,668.0	11,670.0	Niobrara, Original Hole
			Perforated Liner	9/17/2014	11,730.0	11,732.0	Niobrara, Original Hole
			Perforated Liner	9/17/2014	11,788.0	11,790.0	Niobrara, Original Hole
			Perforated Liner	9/17/2014	11,855.0	11,857.0	Niobrara, Original Hole
			Perforated Liner	9/17/2014	11,920.0	11,922.0	Niobrara, Original Hole
			Perforated Liner	9/17/2014	11,980.0	11,982.0	Niobrara, Original Hole



Lease Review

Well Name: RAZOR FEDERAL 26L-2302B

Table with well metadata including API Number (051233833900), WPC ID (1CO0761031), Well Permit Number, Field Name (DJ Horizontal Niobrara), County (Weld), State (CO), and completion details like Original Spud Date (4/2/2014) and Completion Date (9/22/2014).

Table with well location details including Lot, Quarter 1 (NW), Quarter 2 (SW), Quarter 3, Quarter 4, Section (26), Section Suffix, Section Type, Township (10 N), Township N/S Dir, Range (58 W), Range E/W Dir, and Meridian.

Lateral/Horizontal - Original Hole, 12/16/2014 1:50:39 PM

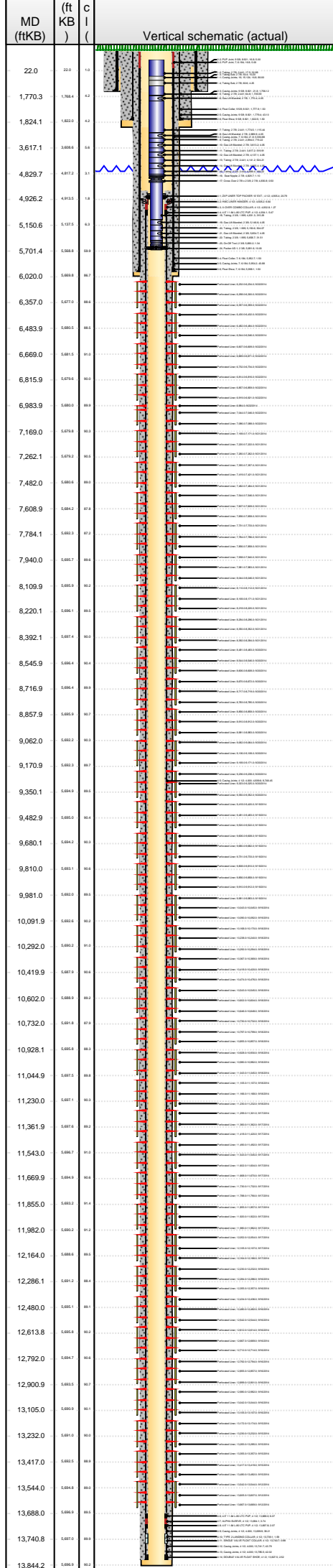


Table of Perforations with columns for Type of Hole, Date, Top (ftKB), Btm (ftKB), and Zone. Lists multiple perforated liner entries from 9/17/2014 to 9/12/2014.

Sand Frac on 9/15/2014 06:00. Comment: Treatment End Date: 9/22/2014; Number of staged intervals: 40; Total 15% HCl used: 572 bbl; Min frac gradient: 0.830 psi/ft; Number of perms: 1440; 79015 bbl ClearStar 30 XL Gel, 20063 bbl ClearStar #30 Linear Gel, 27019 bbl Slickwater.

Stim/Treat Fluids. ClearStar 30 XL Gel; #30 Linear Gel; 15% HCl, <fluidtyp>. Proppant Frm (lb) 5,837,740.3, Avg Treat Rate 47.60, Max Treat Rate 64.90, Avg Treat Press 5,520.0, P Max (psi) 7,664.0, Frac Gradient (p...) 0.84.

Stim/Treat Stages table with 8 stages. Columns include Stg #, Start Date, Top Depth (ftKB), Bottom Depth (ftKB), Vol Clean Pump (bbl), and Vol Slurry (bbl). Includes sub-tables for Additive and Proppant details for each stage.



Lease Review

Well Name: RAZOR FEDERAL 26L-2302B

API Number 051233833900	WPC ID 1CO0761031	Well Permit Number	Field Name DJ Horizontal Niobrara	County Weld	State CO
Well Configuration Type Lateral/Horizontal	Orig KB Elv (ft) 4,751.00	Ground Elevation (ft) 4,734.20	Casing Flange Elevation (ft)	Tubing Head Elevation (ft)	Total Depth (ftKB) 13,844.0
Original Spud Date 4/2/2014	Completion Date 9/22/2014	Asset Group Redtail	Responsible Engineer Andrew Fish	N/S Dist (ft) 2,244.0	N/S Ref FSL
				E/W Dist (ft) 593.0	E/W Ref FWL
Lot	Quarter 1 NW	Quarter 2 SW	Quarter 3	Quarter 4	Section 26
					Section Suffix
					Section Type
					Township 10 N
					Township N/S Dir 58 W
					Range
					Range E/W Dir
					Meridian

Lateral/Horizontal - Original Hole, 12/16/2014 1:50:40 PM					
MD (ftKB)	D (ftKB)	n c l	Vertical schematic (actual)	Logs	Proppant
					Additive Proppant Type 40/70 WS Amount 3,398.4 Units lb Sand Size 40/70
					Stg # 9 Start Date 9/16/2014 Top Depth (ftKB) 12,052.0 Bottom Depth (ftKB) 12,166.0 Vol Clean Pump (bbl) 3178.60 Vol Slurry (bbl) 3347.30
22.0	22.0	1.0			Additive Proppant Type 20/40 WS Amount 153,082.6 Units lb Sand Size 20/40
1,770.3	1,768.4	1.2		Additive Proppant Type 40/70 WS Amount 3,588.6 Units lb Sand Size 40/70	
1,824.1	1,822.0	1.2		Stg # 10 Start Date 9/17/2014 Top Depth (ftKB) 11,855.0 Bottom Depth (ftKB) 11,982.0 Vol Clean Pump (bbl) 3211.70 Vol Slurry (bbl) 3378.70	
3,617.1	3,608.4	1.4		Additive Proppant Type 20/40 WS Amount 151,680.0 Units lb Sand Size 20/40	
4,829.7	4,817.2	1.1		Additive Proppant Type 40/70 WS Amount 3,404.7 Units lb Sand Size 40/70	
4,926.2	4,913.2	1.8		Stg # 11 Start Date 9/17/2014 Top Depth (ftKB) 11,668.0 Bottom Depth (ftKB) 11,790.0 Vol Clean Pump (bbl) 3102.00 Vol Slurry (bbl) 3256.30	
5,150.6	5,127.4	1.3		Additive Proppant Type 20/40 WS Amount 139,695.1 Units lb Sand Size 20/40	
5,701.4	5,683.3	1.8		Additive Proppant Type 40/70 WS Amount 3,584.9 Units lb Sand Size 40/70	
6,020.0	6,003.3	1.8		Stg # 12 Start Date 9/17/2014 Top Depth (ftKB) 11,490.0 Bottom Depth (ftKB) 11,604.0 Vol Clean Pump (bbl) 3202.30 Vol Slurry (bbl) 3367.30	
6,357.0	6,337.0	1.8		Additive Proppant Type 20/40 WS Amount 150,253.7 Units lb Sand Size 20/40	
6,483.9	6,465.5	1.8		Additive Proppant Type 40/70 WS Amount 3,004.3 Units lb Sand Size 40/70	
6,669.0	6,641.5	1.9		Stg # 13 Start Date 9/17/2014 Top Depth (ftKB) 11,299.0 Bottom Depth (ftKB) 11,420.0 Vol Clean Pump (bbl) 3283.40 Vol Slurry (bbl) 3445.40	
6,815.9	6,793.3	1.9		Additive Proppant Type 20/40 WS Amount 146,881.7 Units lb Sand Size 20/40	
6,983.9	6,961.3	1.9		Additive Proppant Type 40/70 WS Amount 3,544.8 Units lb Sand Size 40/70	
7,169.0	7,147.3	1.9		Stg # 14 Start Date 9/17/2014 Top Depth (ftKB) 11,105.0 Bottom Depth (ftKB) 11,232.0 Vol Clean Pump (bbl) 3184.40 Vol Slurry (bbl) 3343.20	
7,262.1	7,242.3	1.9		Additive Proppant Type 20/40 WS Amount 144,345.1 Units lb Sand Size 20/40	
7,482.0	7,463.3	1.9		Additive Proppant Type 40/70 WS Amount 3,111.9 Units lb Sand Size 40/70	
7,608.9	7,591.3	1.9		Stg # 15 Start Date 9/18/2014 Top Depth (ftKB) 10,928.0 Bottom Depth (ftKB) 11,045.0 Vol Clean Pump (bbl) 3215.40 Vol Slurry (bbl) 3372.90	
7,784.1	7,767.3	1.9		Additive Proppant Type 20/40 WS Amount 142,620.6 Units lb Sand Size 20/40	
7,940.0	7,923.3	1.9		Additive Proppant Type 40/70 WS Amount 3,656.2 Units lb Sand Size 40/70	
8,109.9	8,093.3	1.9		Stg # 16 Start Date 9/18/2014 Top Depth (ftKB) 10,730.0 Bottom Depth (ftKB) 10,857.0 Vol Clean Pump (bbl) 3204.30 Vol Slurry (bbl) 3361.30	
8,220.1	8,204.3	1.9		Additive Proppant Type 20/40 WS Amount 142,247.3 Units lb Sand Size 20/40	
8,392.1	8,376.3	1.9		Additive Proppant Type 40/70 WS Amount 3,602.4 Units lb Sand Size 40/70	
8,545.9	8,530.3	1.9		Stg # 17 Start Date 9/18/2014 Top Depth (ftKB) 10,543.0 Bottom Depth (ftKB) 10,648.0 Vol Clean Pump (bbl) 3177.30 Vol Slurry (bbl) 3339.60	
8,716.9	8,701.3	1.9	Additive Proppant Type 20/40 WS Amount 147,594.8 Units lb Sand Size 20/40		
8,857.9	8,842.3	1.9	Additive Proppant Type 40/70 WS Amount 3,123.2 Units lb Sand Size 40/70		
9,062.0	9,046.3	1.9	Stg # 18 Start Date 9/18/2014 Top Depth (ftKB) 10,367.0 Bottom Depth (ftKB) 10,476.0 Vol Clean Pump (bbl) 3152.90 Vol Slurry (bbl) 3315.20		
9,170.9	9,155.3	1.9	Additive Proppant Type 20/40 WS Amount 146,973.5 Units lb Sand Size 20/40		
9,350.1	9,334.3	1.9	Additive Proppant Type 40/70 WS Amount 3,736.3 Units lb Sand Size 40/70		
9,482.9	9,467.3	1.9	Stg # 19 Start Date 9/18/2014 Top Depth (ftKB) 10,168.0 Bottom Depth (ftKB) 10,294.0 Vol Clean Pump (bbl) 3168.70 Vol Slurry (bbl) 3331.10		
9,680.1	9,664.3	1.9	Additive Proppant Type 20/40 WS Amount 147,912.8 Units lb Sand Size 20/40		
9,810.0	9,794.3	1.9	Additive Proppant Type 40/70 WS Amount 2,945.5 Units lb Sand Size 40/70		
9,981.0	9,965.3	1.9	Stg # 20 Start Date 9/19/2014 Top Depth (ftKB) 9,981.0 Bottom Depth (ftKB) 10,092.0 Vol Clean Pump (bbl) 3989.10 Vol Slurry (bbl) 4153.90		
10,091.9	10,075.3	1.9	Additive Proppant Type 20/40 WS Amount 149,541.6 Units lb Sand Size 20/40		
10,292.0	10,276.3	1.9	Additive Proppant Type 40/70 WS Amount 3,563.6 Units lb Sand Size 40/70		
10,419.9	10,403.3	1.9	Stg # 21 Start Date 9/19/2014 Top Depth (ftKB) 9,808.0 Bottom Depth (ftKB) 9,912.0 Vol Clean Pump (bbl) 3165.50 Vol Slurry (bbl) 3328.30		
10,602.0	10,586.3	1.9	Additive Proppant Type 20/40 WS Amount 147,658.9 Units lb Sand Size 20/40		
10,732.0	10,716.3	1.9	Additive Proppant Type 40/70 WS Amount 3,512.3 Units lb Sand Size 40/70		
10,928.1	10,912.3	1.9	Stg # 22 Start Date 9/19/2014 Top Depth (ftKB) 9,606.0 Bottom Depth (ftKB) 9,733.0 Vol Clean Pump (bbl) 3127.40 Vol Slurry (bbl) 3287.10		
11,044.9	11,028.3	1.9	Additive Proppant Type 20/40 WS Amount 145,425.8 Units lb Sand Size 20/40		
11,230.0	11,214.3	1.9	Additive Proppant Type 40/70 WS Amount 2,886.7 Units lb Sand Size 40/70		
11,361.9	11,345.3	1.9	Stg # 23 Start Date 9/19/2014 Top Depth (ftKB) 9,418.0 Bottom Depth (ftKB) 9,522.0 Vol Clean Pump (bbl) 3173.30 Vol Slurry (bbl) 3332.50		
11,543.0	11,527.3	1.9	Additive Proppant Type 20/40 WS Amount 144,418.3 Units lb Sand Size 20/40		
11,669.9	11,653.3	1.9	Additive Proppant Type 40/70 WS Amount 3,417.2 Units lb Sand Size 40/70		
11,855.0	11,839.3	1.9	Stg # 24 Start Date 9/19/2014 Top Depth (ftKB) 9,236.0 Bottom Depth (ftKB) 9,352.0 Vol Clean Pump (bbl) 3149.30 Vol Slurry (bbl) 3318.80		
11,982.0	11,966.3	1.9	Additive Proppant Type 20/40 WS Amount 155,014.6 Units lb Sand Size 20/40		
12,164.0	12,148.3	1.9			
12,286.1	12,270.3	1.9			
12,480.0	12,464.3	1.9			
12,613.8	12,597.3	1.9			
12,792.0	12,776.3	1.9			
12,900.9	12,884.3	1.9			
13,105.0	13,089.3	1.9			
13,232.0	13,216.3	1.9			
13,417.0	13,401.3	1.9			
13,544.0	13,528.3	1.9			
13,688.0	13,672.3	1.9			
13,740.8	13,724.3	1.9			
13,844.2	13,828.3	1.9			



Lease Review

Well Name: RAZOR FEDERAL 26L-2302B

API Number 051233833900	WPC ID 1CO0761031	Well Permit Number	Field Name DJ Horizontal Niobrara	County Weld	State CO
Well Configuration Type Lateral/Horizontal	Orig KB Elv (ft) 4,751.00	Ground Elevation (ft) 4,734.20	Casing Flange Elevation (ft)	Tubing Head Elevation (ft)	Total Depth (ftKB) 13,844.0
Original Spud Date 4/2/2014	Completion Date 9/22/2014	Asset Group Redtail	Responsible Engineer Andrew Fish	N/S Dist (ft) 2,244.0	N/S Ref FSL
				E/W Dist (ft) 593.0	E/W Ref FWL
Lot	Quarter 1 NW	Quarter 2 SW	Quarter 3	Quarter 4	Section 26
					Section Suffix
					Section Type
					Township 10 N
					Township N/S Dir
					Range 58 W
					Range E/W Dir
					Meridian

Lateral/Horizontal - Original Hole, 12/16/2014 1:50:42 PM					
MD (ftKB)	D (ft)	nc l	Vertical schematic (actual)	Logs	Proppant
					Additive Type 40/70 WS Amount 2,406.2 Units lb Sand Size 40/70
					Stg # 25 Start Date 9/20/2014 Top Depth (ftKB) 9,062.0 Bottom Depth (ftKB) 9,171.0 Vol Clean Pump (bbl) 3145.50 Vol Slurry (bbl) 3313.20
22.0	22.0	1.0			Additive Type 20/40 WS Amount 152,031.6 Units lb Sand Size 20/40
1,770.3	1,768.4	1.9			Additive Type 40/70 WS Amount 3,767.6 Units lb Sand Size 40/70
1,824.1	1,822.0	2.1			Stg # 26 Start Date 9/20/2014 Top Depth (ftKB) 8,856.0 Bottom Depth (ftKB) 8,983.0 Vol Clean Pump (bbl) 2753.10 Vol Slurry (bbl) 2865.00
3,617.1	3,608.4	8.7			Additive Type 20/40 WS Amount 100,448.0 Units lb Sand Size 20/40
4,829.7	4,817.2	12.5			Additive Type 40/70 WS Amount 3,444.7 Units lb Sand Size 40/70
4,926.2	4,915.0	11.2			Stg # 27 Start Date 9/20/2014 Top Depth (ftKB) 8,670.0 Bottom Depth (ftKB) 8,785.0 Vol Clean Pump (bbl) 3119.00 Vol Slurry (bbl) 3285.70
5,150.6	5,127.4	23.2			Additive Type 20/40 WS Amount 151,095.2 Units lb Sand Size 20/40
5,701.4	5,689.3	12.1			Additive Type 40/70 WS Amount 3,737.5 Units lb Sand Size 40/70
6,020.0	6,003.3	16.7			Stg # 28 Start Date 9/20/2014 Top Depth (ftKB) 8,481.0 Bottom Depth (ftKB) 8,608.0 Vol Clean Pump (bbl) 3102.50 Vol Slurry (bbl) 3266.60
6,357.0	6,317.0	40.0			Additive Type 20/40 WS Amount 148,864.1 Units lb Sand Size 20/40
6,483.9	6,480.5	3.4			Additive Type 40/70 WS Amount 3,514.8 Units lb Sand Size 40/70
6,669.0	6,661.5	7.5			Stg # 29 Start Date 9/20/2014 Top Depth (ftKB) 8,294.0 Bottom Depth (ftKB) 8,394.0 Vol Clean Pump (bbl) 3112.90 Vol Slurry (bbl) 3276.40
6,815.9	6,816.0	0.1			Additive Type 20/40 WS Amount 148,755.5 Units lb Sand Size 20/40
6,983.9	6,980.0	3.9			Additive Type 40/70 WS Amount 3,133.2 Units lb Sand Size 40/70
7,169.0	7,174.8	-5.8			Stg # 30 Start Date 9/21/2014 Top Depth (ftKB) 8,110.0 Bottom Depth (ftKB) 8,220.0 Vol Clean Pump (bbl) 3062.20 Vol Slurry (bbl) 3226.80
7,262.1	7,274.2	-12.1			Additive Type 20/40 WS Amount 149,691.8 Units lb Sand Size 20/40
7,482.0	7,480.0	2.0			Additive Type 40/70 WS Amount 3,230.8 Units lb Sand Size 40/70
7,608.9	7,604.2	4.7			Stg # 31 Start Date 9/21/2014 Top Depth (ftKB) 7,938.0 Bottom Depth (ftKB) 8,046.0 Vol Clean Pump (bbl) 3071.20 Vol Slurry (bbl) 3239.60
7,784.1	7,802.3	-18.2			Additive Type 20/40 WS Amount 153,257.4 Units lb Sand Size 20/40
7,940.0	7,957.1	-17.1			Additive Type 40/70 WS Amount 3,200.7 Units lb Sand Size 40/70
8,109.9	8,095.3	14.6			Stg # 32 Start Date 9/21/2014 Top Depth (ftKB) 7,731.0 Bottom Depth (ftKB) 7,858.0 Vol Clean Pump (bbl) 3104.90 Vol Slurry (bbl) 3271.60
8,220.1	8,266.1	-46.0			Additive Type 20/40 WS Amount 151,539.8 Units lb Sand Size 20/40
8,392.1	8,397.4	-5.3			Additive Type 40/70 WS Amount 3,267.1 Units lb Sand Size 40/70
8,545.9	8,564.4	-18.5			Stg # 33 Start Date 9/21/2014 Top Depth (ftKB) 7,544.0 Bottom Depth (ftKB) 7,658.0 Vol Clean Pump (bbl) 3106.40 Vol Slurry (bbl) 3276.70
8,716.9	8,764.4	-47.5			Additive Type 20/40 WS Amount 154,608.6 Units lb Sand Size 20/40
8,857.9	8,895.3	-37.4			Additive Type 40/70 WS Amount 3,591.1 Units lb Sand Size 40/70
9,062.0	9,022.3	39.7			Stg # 34 Start Date 9/21/2014 Top Depth (ftKB) 7,355.0 Bottom Depth (ftKB) 7,484.0 Vol Clean Pump (bbl) 3070.40 Vol Slurry (bbl) 3232.90
9,170.9	9,202.3	-31.4			Additive Type 20/40 WS Amount 147,822.1 Units lb Sand Size 20/40
9,350.1	9,394.3	-44.2			Additive Type 40/70 WS Amount 3,069.4 Units lb Sand Size 40/70
9,482.9	9,500.3	-17.4			Stg # 35 Start Date 9/21/2014 Top Depth (ftKB) 7,169.0 Bottom Depth (ftKB) 7,262.0 Vol Clean Pump (bbl) 3056.10 Vol Slurry (bbl) 3215.00
9,680.1	9,694.2	-14.1			Additive Type 20/40 WS Amount 144,410.4 Units lb Sand Size 20/40
9,810.0	9,801.1	8.9			Additive Type 40/70 WS Amount 3,146.9 Units lb Sand Size 40/70
9,981.0	9,992.0	-11.0			Stg # 36 Start Date 9/21/2014 Top Depth (ftKB) 6,984.0 Bottom Depth (ftKB) 7,088.0 Vol Clean Pump (bbl) 3039.50 Vol Slurry (bbl) 3204.80
10,091.9	10,094.3	-2.4			Additive Type 20/40 WS Amount 150,035.5 Units lb Sand Size 20/40
10,292.0	10,292.0	0.0			Additive Type 40/70 WS Amount 3,482.3 Units lb Sand Size 40/70
10,419.9	10,419.9	0.0			Stg # 37 Start Date 9/22/2014 Top Depth (ftKB) 6,814.0 Bottom Depth (ftKB) 6,921.0 Vol Clean Pump (bbl) 3034.90 Vol Slurry (bbl) 3199.90
10,602.0	10,602.0	0.0			Additive Type 20/40 WS Amount 149,918.9 Units lb Sand Size 20/40
10,732.0	10,732.0	0.0			Additive Type 40/70 WS Amount 3,338.4 Units lb Sand Size 40/70
10,928.1	10,928.1	0.0			Stg # 38 Start Date 9/22/2014 Top Depth (ftKB) 6,607.0 Bottom Depth (ftKB) 6,734.0 Vol Clean Pump (bbl) 3240.10 Vol Slurry (bbl) 3402.80
11,044.9	11,044.9	0.0			Additive Type 20/40 WS Amount 147,729.0 Units lb Sand Size 20/40
11,230.0	11,230.0	0.0		Additive Type 40/70 WS Amount 3,354.6 Units lb Sand Size 40/70	
11,361.9	11,361.9	0.0		Stg # 39 Start Date 9/22/2014 Top Depth (ftKB) 6,430.0 Bottom Depth (ftKB) 6,546.0 Vol Clean Pump (bbl) 2986.70 Vol Slurry (bbl) 3153.10	
11,543.0	11,543.0	0.0		Additive Type 20/40 WS Amount 151,577.4 Units lb Sand Size 20/40	
11,669.9	11,669.9	0.0		Additive Type 40/70 WS Amount 3,010.5 Units lb Sand Size 40/70	
11,855.0	11,855.0	0.0		Stg # 40 Start Date 9/22/2014 Top Depth (ftKB) 6,232.0 Bottom Depth (ftKB) 6,359.0 Vol Clean Pump (bbl) 3060.80 Vol Slurry (bbl) 3225.60	
11,982.0	11,982.0	0.0		Additive Type 20/40 WS Amount 149,749.9 Units lb Sand Size 20/40	
12,164.0	12,164.0	0.0			
12,286.1	12,286.1	0.0			
12,480.0	12,480.0	0.0			
12,613.8	12,613.8	0.0			
12,792.0	12,792.0	0.0			
12,900.9	12,900.9	0.0			
13,105.0	13,105.0	0.0			
13,232.0	13,232.0	0.0			
13,417.0	13,417.0	0.0			
13,544.0	13,544.0	0.0			
13,688.0	13,688.0	0.0			
13,740.8	13,740.8	0.0			
13,844.2	13,844.2	0.0			



Lease Review

Well Name: RAZOR FEDERAL 26L-2302B

API Number 051233833900	WPC ID 1CO0761031	Well Permit Number	Field Name DJ Horizontal Niobrara	County Weld	State CO
Well Configuration Type Lateral/Horizontal	Orig KB Elv (ft) 4,751.00	Ground Elevation (ft) 4,734.20	Casing Flange Elevation (ft)	Tubing Head Elevation (ft)	Total Depth (ftKB) 13,844.0
Original Spud Date 4/2/2014	Completion Date 9/22/2014	Asset Group Redtail	Responsible Engineer Andrew Fish	N/S Dist (ft) 2,244.0	N/S Ref FSL
				E/W Dist (ft) 593.0	E/W Ref FWL
Lot	Quarter 1 NW	Quarter 2 SW	Quarter 3	Quarter 4	Section 26
					Section Suffix
					Section Type
					Township 10 N
					Township N/S Dir 58 W
					Range
					Range E/W Dir
					Meridian

Lateral/Horizontal - Original Hole, 12/16/2014 1:50:43 PM					
Additive Proppant			Type 40/70 WS	Amount 3,280.8	Units lb
			Sand Size 40/70		

MD (ftKB)	D (ftKB)	nc l	Vertical schematic (actual)	Logs	Tubing - Production set at 5,701.6ftKB on 9/28/2014 12:00		
					Set Depth (ftKB) 5,701.6	Comment	Run Date 9/28/2014

Item Des	OD (in)	ID (in)	Len (ft)	Top (ftKB)	Btm (ftKB)
Tubing Hanger			0.50	17.0	17.5
Tubing	2 7/8	2.441	32.88	17.5	50.4
Tubing Sub	2 7/8		10.20	50.4	60.6
Tubing Sub	2 7/8		4.25	60.6	64.8
Tubing	2 7/8	2.441	1,705.59	64.8	1,770.4
Gas Lift Mandrel	2 7/8		4.05	1,770.4	1,774.5
Tubing	2 7/8	2.441	1,115.44	1,774.5	2,889.9
Gas Lift Mandrel	2 7/8		4.05	2,889.9	2,894.0
Tubing	2 7/8	2.441	719.22	2,894.0	3,613.2
Gas Lift Mandrel	2 7/8		4.05	3,613.2	3,617.2
Tubing	2 7/8	2.441	519.91	3,617.2	4,137.1
Gas Lift Mandrel	2 7/8		4.05	4,137.1	4,141.2
Tubing	2 7/8	2.441	524.21	4,141.2	4,665.4
Gas Lift Mandrel	2 7/8		4.05	4,665.4	4,669.5
Tubing	2 7/8	2.441	160.22	4,669.5	4,829.7
Seat Nipple	2 7/8		1.10	4,829.7	4,830.8
Cross Over 2 7/8 x 2 3/8	2 7/8		0.50	4,830.8	4,831.3
Tubing	2 3/8	1.995	315.29	4,831.3	5,146.6
Gas Lift Mandrel	2 3/8		4.05	5,146.6	5,150.6
Tubing	2 3/8	1.995	504.07	5,150.6	5,654.7
Gas Lift Mandrel	2 3/8		4.05	5,654.7	5,658.7
Tubing	2 3/8	1.995	31.51	5,658.7	5,690.2
On-Off Tool	2 3/8		1.34	5,690.2	5,691.6
Packer AS-1	2 3/8		10.00	5,691.6	5,701.6

Rod Strings					
<des> on <dtmrun>					
Rod Description			Run Date	Pull Date	
Item Des	OD (in)	Len (ft)	Top (ftKB)	Btm (ftKB)	

Other Strings					
Set Depth (ftKB)		Comment		Run Date	Pull Date
Item Des	OD (in)	Len (ft)	Top (ftKB)	Btm (ftKB)	

Other In Hole					
Des	OD (in)	Run Date	Pull Date	Top (ftKB)	Btm (ftKB)
CFP	4	9/22/2014	9/26/2014	6,388.0	6,390.0
CFP	4	9/22/2014	9/26/2014	6,576.0	6,578.0
CFP	4	9/22/2014	9/26/2014	6,780.0	6,782.0
CFP	4	9/22/2014	9/26/2014	6,951.0	6,953.0
CFP	4	9/22/2014	9/26/2014	7,124.0	7,126.0
CFP	4	9/21/2014	9/26/2014	7,300.0	7,302.0
CFP	4	9/21/2014	9/26/2014	7,513.0	7,515.0
CFP	4	9/21/2014	9/26/2014	7,692.0	7,694.0
CFP	4	9/21/2014	9/26/2014	7,900.0	7,902.0
CFP	4	9/21/2014	9/27/2014	8,075.0	8,077.0
CFP	4	9/21/2014	9/27/2014	8,250.0	8,252.0
CFP	4	9/21/2014	9/27/2014	8,426.0	8,428.0
CFP	4	9/20/2014	9/27/2014	8,637.0	8,639.0
CFP	4	9/20/2014	9/27/2014	8,814.0	8,816.0
CFP	4	9/20/2014	9/27/2014	9,020.0	9,022.0
CFP	4	9/20/2014	9/27/2014	9,200.0	9,202.0
CFP	4	9/20/2014	9/27/2014	9,380.0	9,382.0
CFP	4	9/19/2014	9/27/2014	9,560.0	9,562.0
CFP	4	9/19/2014	9/27/2014	9,770.0	9,772.0
CFP	4	9/19/2014	9/27/2014	9,940.0	9,942.0
CFP	4	9/19/2014	9/27/2014	10,120.0	10,122.0
CFP	4	9/18/2014	9/27/2014	10,324.0	10,326.0
CFP	4	9/18/2014	9/27/2014	10,505.0	10,507.0
CFP	4	9/18/2014	9/27/2014	10,680.0	10,682.0
CFP	4	9/18/2014	9/27/2014	10,887.0	10,889.0
CFP	4	9/18/2014	9/27/2014	11,074.0	11,076.0
CFP	4	9/18/2014	9/27/2014	11,272.0	11,274.0
CFP	4	9/17/2014	9/27/2014	11,449.0	11,451.0
CFP	4	9/17/2014	9/27/2014	11,636.0	11,638.0
CFP	4	9/17/2014	9/27/2014	11,809.0	11,811.0
CFP	4	9/17/2014	9/27/2014	12,011.0	12,013.0
CFP	4	9/17/2014	9/27/2014	12,190.0	12,192.0
CFP	4	9/16/2014	9/27/2014	12,392.0	12,394.0

