

**ENCANA OIL & GAS (USA) INC. - EBUS
DO NOT MAIL - 370 17TH ST STE 1700
DENVER, Colorado**

Vogl-Geist 2F-5H-F267

H&P 278

Post Job Summary

Cement Intermediate Casing

Date Prepared: 03/05/2014
Version: 1

Service Supervisor: SMITH, AARON

Submitted by: HINDS, MOLLYE

HALLIBURTON

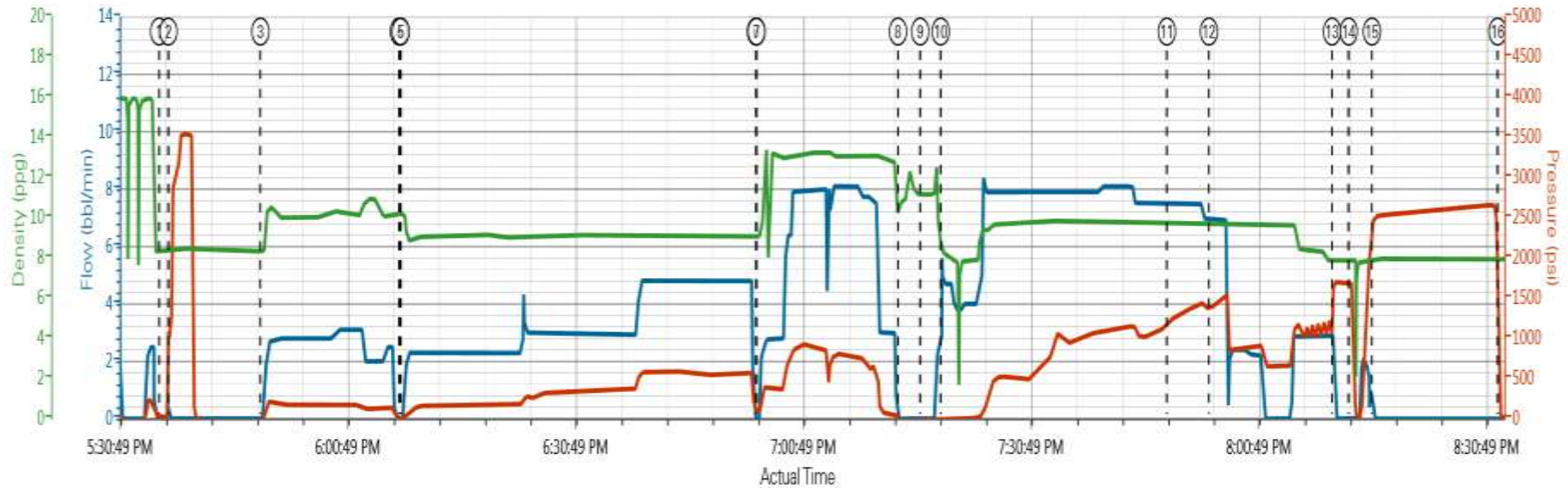
Pumping Schedule

Stage /Plug #	Fluid #	Fluid Type	Fluid Name	Surface Density lbm/gal	Avg Rate bbl/min	Surface Volume	Downhole Volume
1	2	Spacer	TUNED SPACER III	10.00	3.00	40.0 bbl	40.0 bbl
1	3	Cement Slurry	TUNED LIGHT (TM) B1	10.00	3.00	281.0 sacks	281.0 sacks
1	4	Cement Slurry	VARICEM B1	13.00	8.00	313.0 sacks	313.0 sacks
1	5	Mud	DISPLACEMENT	8.40	8.00	286.0 bbl	286.0 bbl

HALLIBURTON

Data Acquisition

ENCANA OIL AND GAS VOGL-GEIST 2F-5H-F267



Comb Pump Rate (bbl/min) 1.9 PS Pump Press (psi) 26 DH Density (ppg) 7.91

- ① Start Job 0,15,8.39 ④ Drop Bottom Plug 0,-3,10.2 ⑦ Pump Tail Cement 0,81,9.05 ⑩ Pump Displacement 4.7,19,8.21 ⑬ Bump Plug 0,1707,7.88 ⑯ End Job 0,55.15,7.94
- ② Test Lines 0,1290,8.32 ⑤ Pump Lead Cement 0,-3,10.24 ⑧ Shutdown 0,-26,10.81 ⑫ Spacer Returns to Surface 7.5,1196,9.71 ⑭ Check Floats 0,1689,7.88
- ③ Pump Spacer 10,-29,8.31 ⑥ Drop Bottom Plug 0,82,9.03 ⑨ Drop Top Plug 0,-21,11.17 ⑰ Cement Returns to Surface 6.9,1384,9.66 ⑮ Casing Test 0,2614,7.92

▼ HALLIBURTON | iCem® Service

Created: 2014-02-28 17:16:02; Version: 3.0.121

Edit

Customer: ENCANA OIL & GAS (USA) INC. - EBUS
 Representative: AARON SMITH

Job Date: 2/28/2014 5:18:28 PM
 Sales Order #: 901155959

Well: VOGL-GEIST 2F-5H-F267

Service Supervisor Reports

Job Log

Date/Time	Chart #	Activity Code	Pump Rate	Cum Vol	Pump	Pressure (psig)	Comments
02/28/2014 13:30		Casing on Bottom					
02/28/2014 13:30		Circulate Well					
02/28/2014 14:30		Arrive at Location from Service Center					WITH ALL EQUIPMENT AND MATERIALS.
02/28/2014 14:45		Assessment Of Location Safety Meeting					
02/28/2014 15:00		Pre-Job Safety Meeting					WITH CUSTOMER REP AND RIG CREW.
02/28/2014 15:15		Pre-Rig Up Safety Meeting					RIG-UP JSA
02/28/2014 15:30		Rig-Up Equipment					
02/28/2014 17:00		Rig-Up Completed					
02/28/2014 17:36		Start Job					
02/28/2014 17:37		Test Lines				3500.0	FRESH WATER WITH NO ADDITIVES
02/28/2014 17:49		Pump Spacer 1	3	40		190.0	TUNED SPACER @ 10 PPG, 5.92 YIELD, 44.31 GAL/SK VERIFIED USING PRESSURIZED SCALES
02/28/2014 18:07		Drop Bottom Plug					PRE-LOADED HWE TOP PLUG IN PLUG CONTAINER VERIFIED BY COMPANY REP.
02/28/2014 18:08		Pump Lead Cement	3	116		350.0	281 SKS TUNED-LIGHT @ 10 PPG, 2.33 YIELD, 8.84 GAL/SK, VERIFIED USING PRESSURIZED SCALES.
02/28/2014 18:54		Drop Bottom Plug					
02/28/2014 18:54		Pump Tail Cement	8	109		580.0	313 SKS VARICEM @ 13 PPG, 1.95 YIELD, 9.87 GAL/SK VERIFIED USING PRESSURIZED SCALES
02/28/2014 19:13		Shutdown					
02/28/2014 19:16		Drop Top Plug					
02/28/2014 19:19		Pump Displacement	8	286		1300.0	MUD, FIRST 20 BBLS FRESH WATER, LAST 16 BBLS FRESH WATER.
02/28/2014 19:49		Spacer Returns to Surface					@ 206 BBLS DISPLACEMENT, 40 BBLS TO THE PIT
02/28/2014 19:54		Cement Returns to Surface					@ 246 BBLS DISPLACEMENT, 40 BBLS TO THE PIT
02/28/2014 20:10		Bump Plug	3	286		1670.0	FINAL CIRCULATING PRESSURE 1200
02/28/2014 20:12		Check Floats					FLOATS HELD, 2 BBLS BACK
02/28/2014 20:16		Other				2641.0	CASING TEST 2500 PSI FOR 15 MIN.
02/28/2014 20:32		End Job					RIG DOWN JSA, JOURNEY MANAGEMENT MEETING, THANKS AARON SMITH AND CREW

HALLIBURTON

The Road to Excellence Starts with Safety

Sold To #: 340078		Ship To #: 3191322		Quote #:		Sales Order #: 901155959	
Customer: ENCANA OIL & GAS (USA) INC. - EBUS				Customer Rep: Parker, Charlie			
Well Name: Vogl-Geist			Well #: 2F-5H-F267		API/UWI #: 05-123-37777		
Field: WATTEBERG		City (SAP): FIRESTONE		County/Parish: Weld		State: Colorado	
Lat: N 40.168 deg. OR N 40 deg. 10 min. 5.196 secs.				Long: W 104.915 deg. OR W -105 deg. 5 min. 6.18 secs.			
Contractor: H&P Drilling			Rig/Platform Name/Num: H&P 278				
Job Purpose: Cement Intermediate Casing							
Well Type: Development Well				Job Type: Cement Intermediate Casing			
Sales Person: FLING, MATTHEW			Srvc Supervisor: SMITH, AARON			MBU ID Emp #: 518187	

Job Personnel

HES Emp Name	Exp Hrs	Emp #	HES Emp Name	Exp Hrs	Emp #	HES Emp Name	Exp Hrs	Emp #
DA COSTA, CHARLES Angelo	7.5	551308	DODSON, RICHARD Bryan	7.5	518192	SMITH, AARON David	7.5	518187
TAUILIILI, SAIAIGA	7.5	545471	WHEELER, JUSTIN W	7.5	196470			

Equipment

HES Unit #	Distance-1 way	HES Unit #	Distance-1 way	HES Unit #	Distance-1 way	HES Unit #	Distance-1 way
10857080C	30 mile	11036295C	30 mile	11398490	30 mile	11542577	30 mile
11633848	30 mile						

Job Hours

Date	On Location Hours	Operating Hours	Date	On Location Hours	Operating Hours	Date	On Location Hours	Operating Hours
TOTAL								
<i>Total is the sum of each column separately</i>								

Job

Job Times

Formation Name	Formation Depth (MD)	Top	Bottom	Called Out	Date	Time	Time Zone
				On Location	28 - Feb - 2014	14:30	MST
Form Type			BHST	Job Started	28 - Feb - 2014	17:36	MST
Job depth MD	7574. ft		Job Depth TVD	7230. ft	Job Completed	28 - Feb - 2014	20:32
Water Depth			Wk Ht Above Floor	5. ft	Departed Loc	28 - Feb - 2014	22:00
Perforation Depth (MD)	<i>From</i>		<i>To</i>				

Well Data

Description	New / Used	Max pressure psig	Size in	ID in	Weight lbm/ft	Thread	Grade	Top MD ft	Bottom MD ft	Top TVD ft	Bottom TVD ft
Sales/Rental/3rd Party (HES)											

Description	Qty	Qty uom	Depth	Supplier
CMT CASING EQUIPMENT BOM	1	JOB		
SHOE,FLT,7 8RD,2-3/4 SS II VLV	1	EA		
CLR,FLT,7 8RD 17-26PPF,2-3/4SSII	1	EA		
CTRZR ASSY,API,7 CSG X 8 3/4HOLE,HNGD	40	EA		
CTRZR ASSY,SPRL BL,LEFT HD,7 CSG X 8	20	EA		
CLAMP - LIMIT - 7 - HINGED -	1	EA		
Description	Qty	Qty uom	Depth	Supplier
PLUG,CMTG,TOP,7,HWE,5.66 MIN/6.54 MAX CS	1	EA		
PLUG,CMTG,BOT,7,HWE,5.66 MIN/6.54 MAX CS	1	EA		

HALLIBURTON

Fluid Data									
Stage/Plug #: 1									
Fluid #	Stage Type	Fluid Name	Qty	Qty uom	Mixing Density lbm/gal	Yield ft ³ /sk	Mix Fluid Gal/sk	Rate bbl/min	Total Mix Fluid Gal/sk
2	TUNED SPACER III	TUNED SPACER III - SBM (483826)	40.00	bbl	10.	5.92	39.17	3.0	
	39.07 gal/bbl	FRESH WATER							
	61 lbm/bbl	BARITE, BULK (100003681)							
3	TUNED LIGHT (TM) B1	TUNED LIGHT (TM) SYSTEM (452984)	281.0	sacks	10.	2.33	8.84	3.0	8.84
	8.84 Gal	FRESH WATER							
4	VARICEM B1	VARICEM (TM) CEMENT (452009)	313.0	sacks	13.	1.95	9.87	8.0	9.87
	9.87 Gal	FRESH WATER							
5	DISPLACEMENT		286.0	bbl	8.4			8.0	
<i>The Information Stated Herein Is Correct</i>				Customer Representative Signature					