



GeologPlot  
(Scale: 5"=100' (10'))

Company: Archer Directional Services

State: CO

Well: Fiducial 6-62-34-6457BH2

County: USA

Field: Wattenburg

Country: Weld

Well ID:

Job Number: 5005-432-22

Location: Sec. 34 - T6N - R62W

Elev KB: 4699

Operator 1: Bill Barrett

Elev DF: 22

Operator 2: Andrew Brus

Elev GL: 4677

Comment 1:

Comment 2:

Comment 3:

Comment 4:

Comment 5:

Hole Data

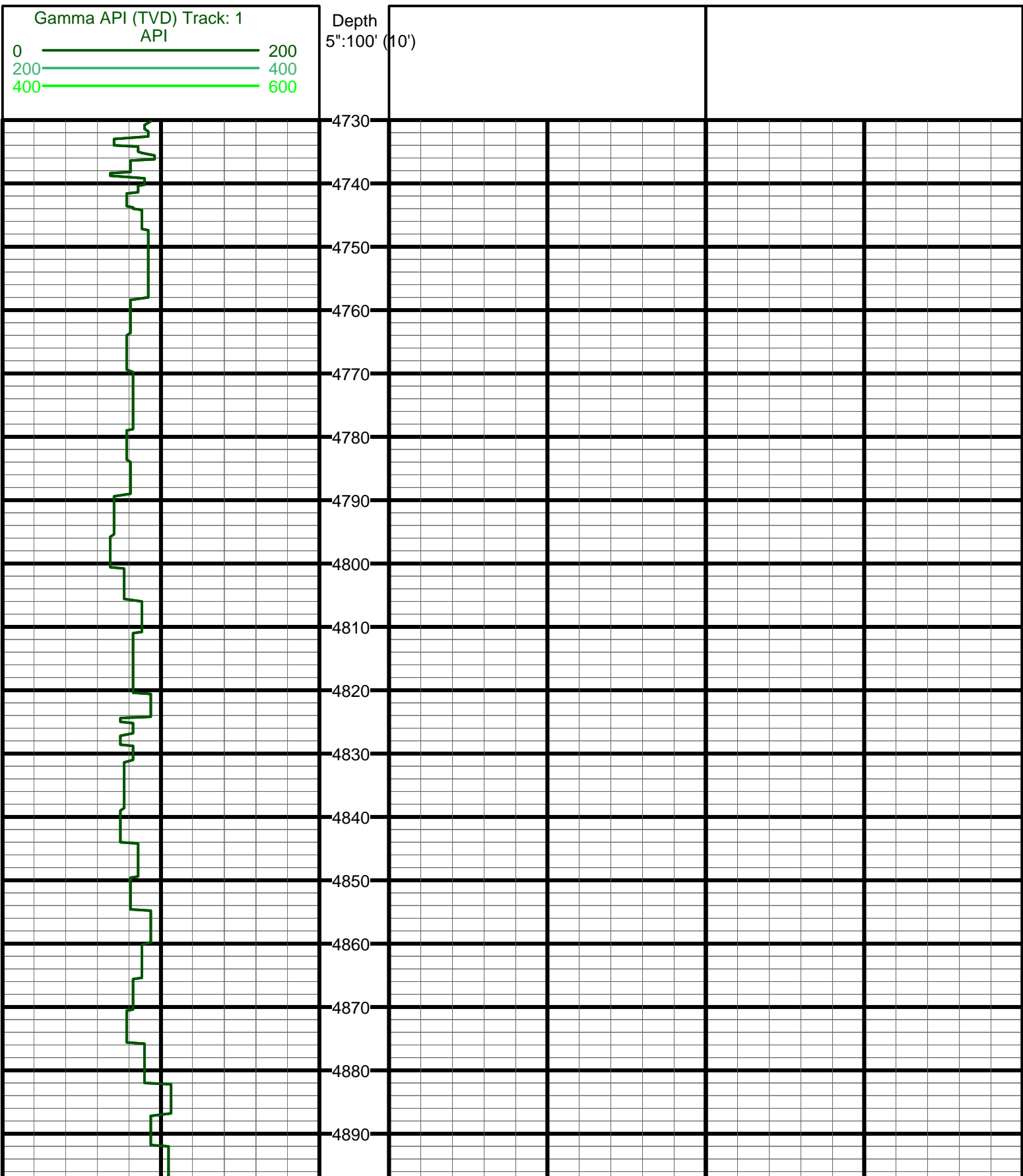
Casing Record

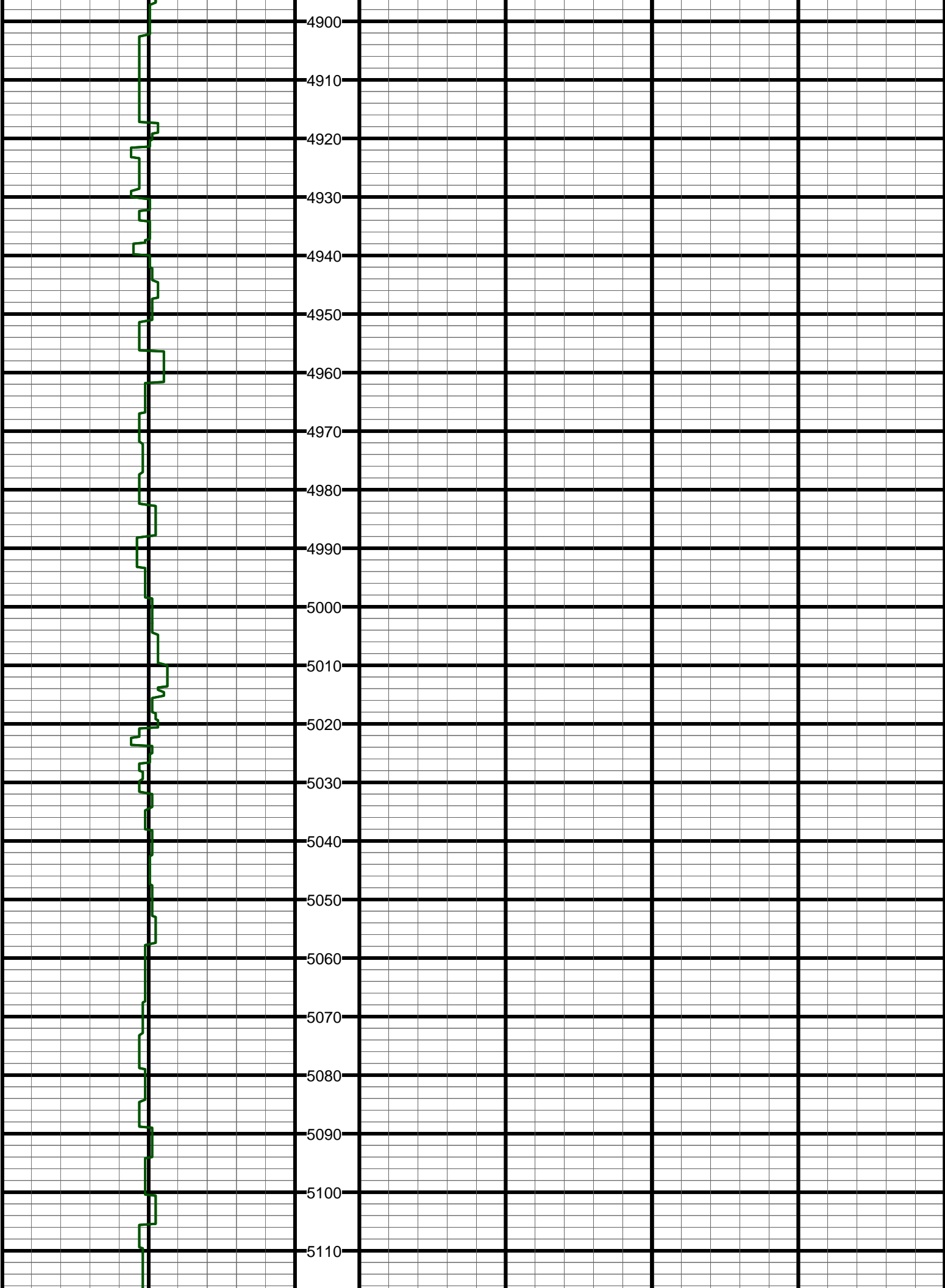
Size	From	To	Size	From	To
13.25	0-820	820	9.625	0	820
8.75	820	6617	7	820	6617
6.125	6617	16273	4.5	5766	5766

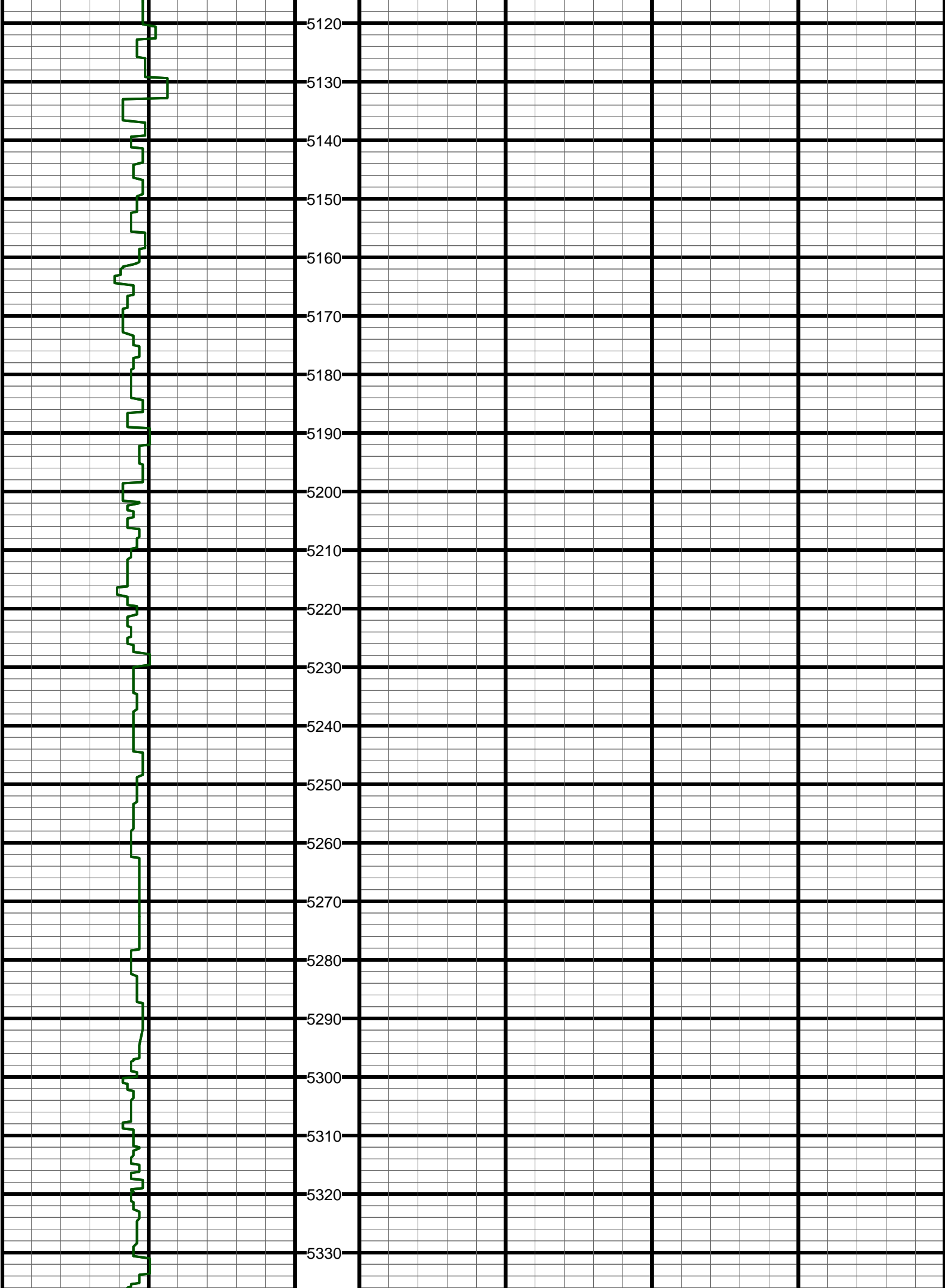
Tool Run Data	Run #1	Run #2	Run #3	Run #4	Run #5
Tool S/N	51	51	602	604	
Cal Factor	4.281	4.281	2.699	2.699	
Gamma Offset	53	52	51	49	
Start Depth	820	5866	6630	14314	
Start Date	10/11/14	10/12/14	10/14/14	10/18/14	
Start Time	6:45	19:45	17:15	21:20	
End Depth	5866	6630	14314	16273	
End Date	10/12/14	10/13/14	10/18/14	10/21/14	
End Time	18:15	20:00	20:25	9:00	

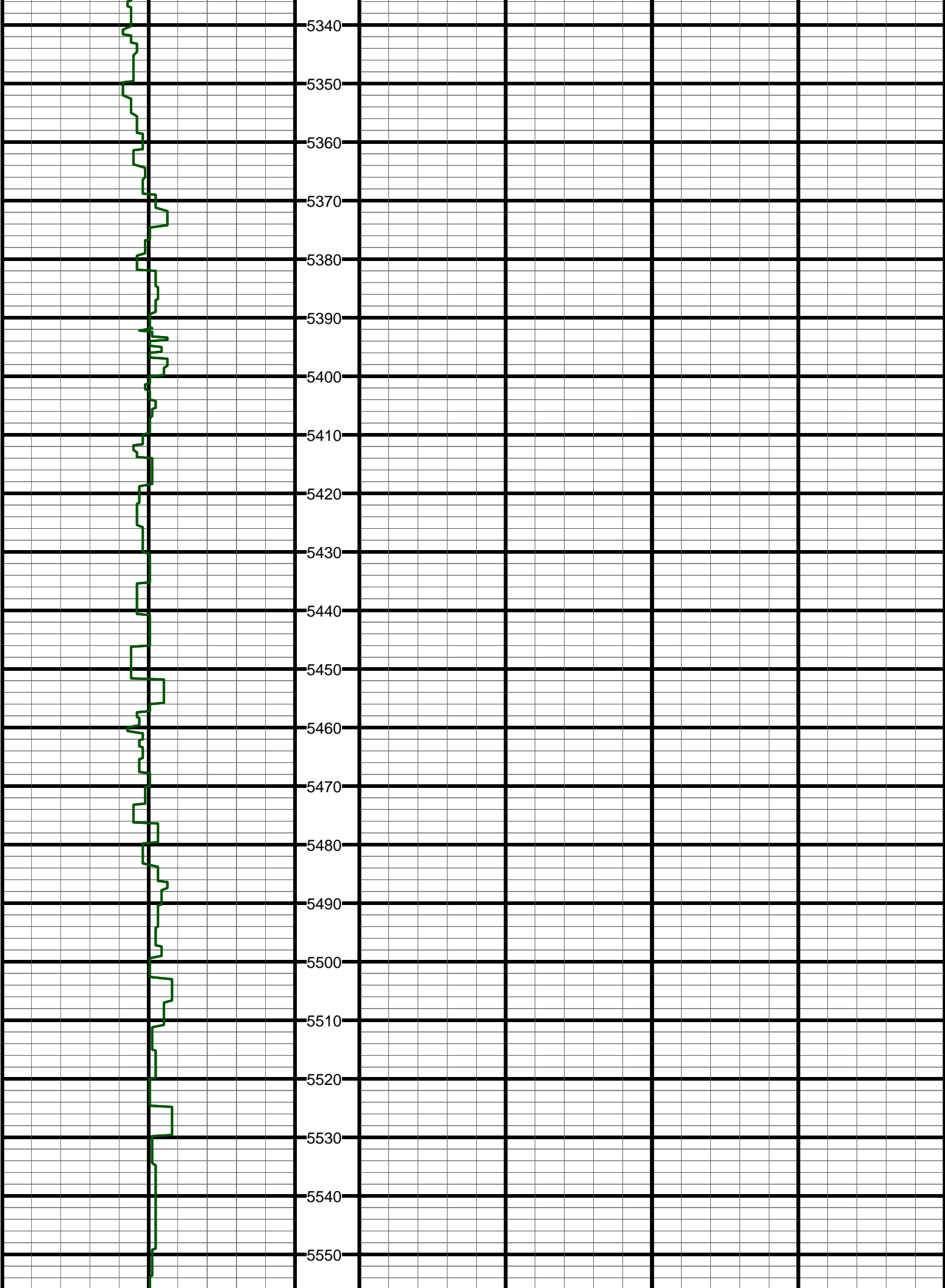
Run #10	Run #9	Run #8	Run #7	Run #6	Tool Run Data
					Tool S/N
					Cal Factor
					Offset
					Start Depth
					Start Date
					Start Time
					End Depth
					End Date
					End Time
Run #15	Run #14	Run #13	Run #12	Run #11	Tool Run Data
					Tool S/N
					Cal Factor
					Offset
					Start Depth
					Start Date
					Start Time
					End Depth

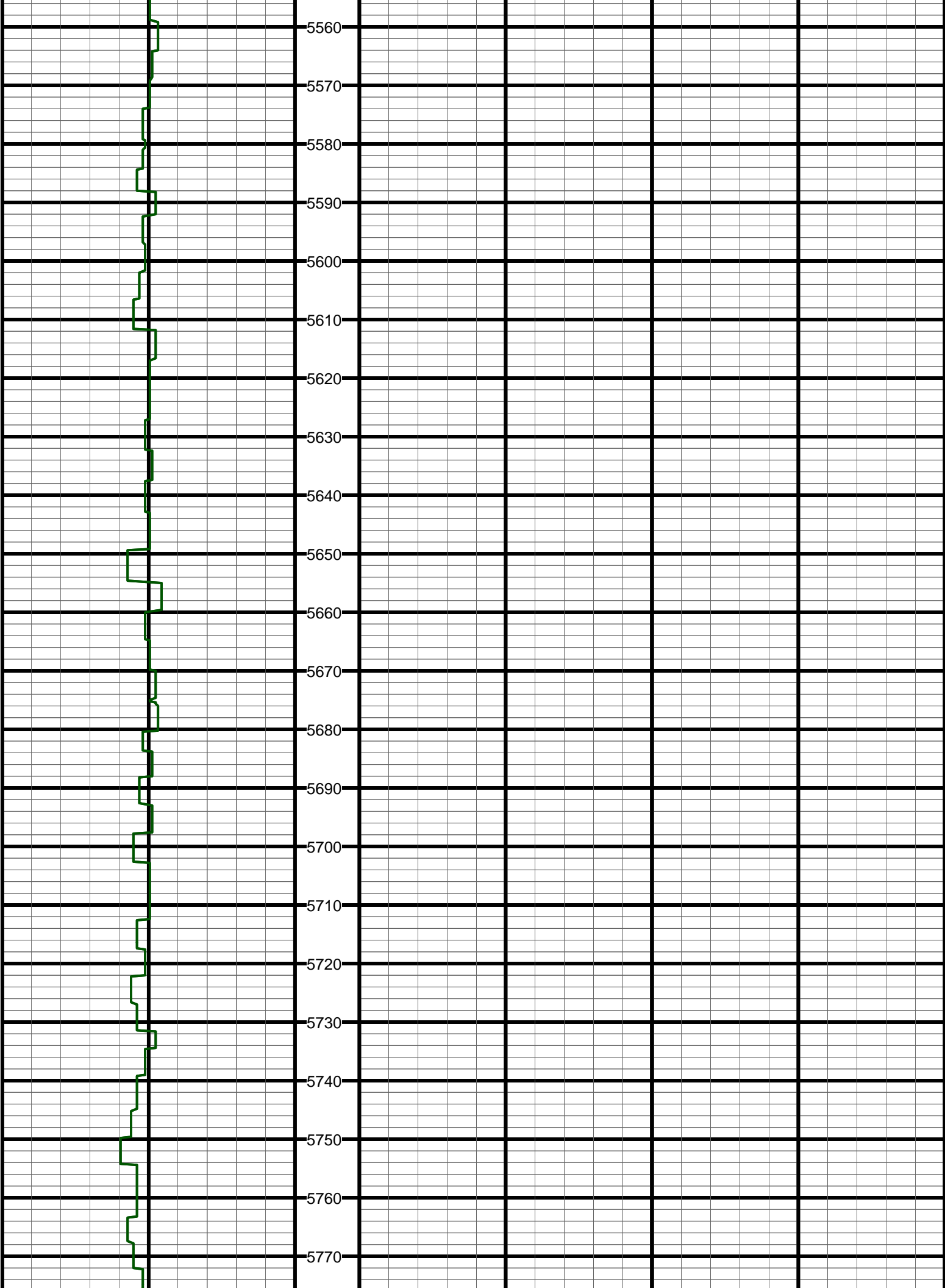
End Date					
End Time					

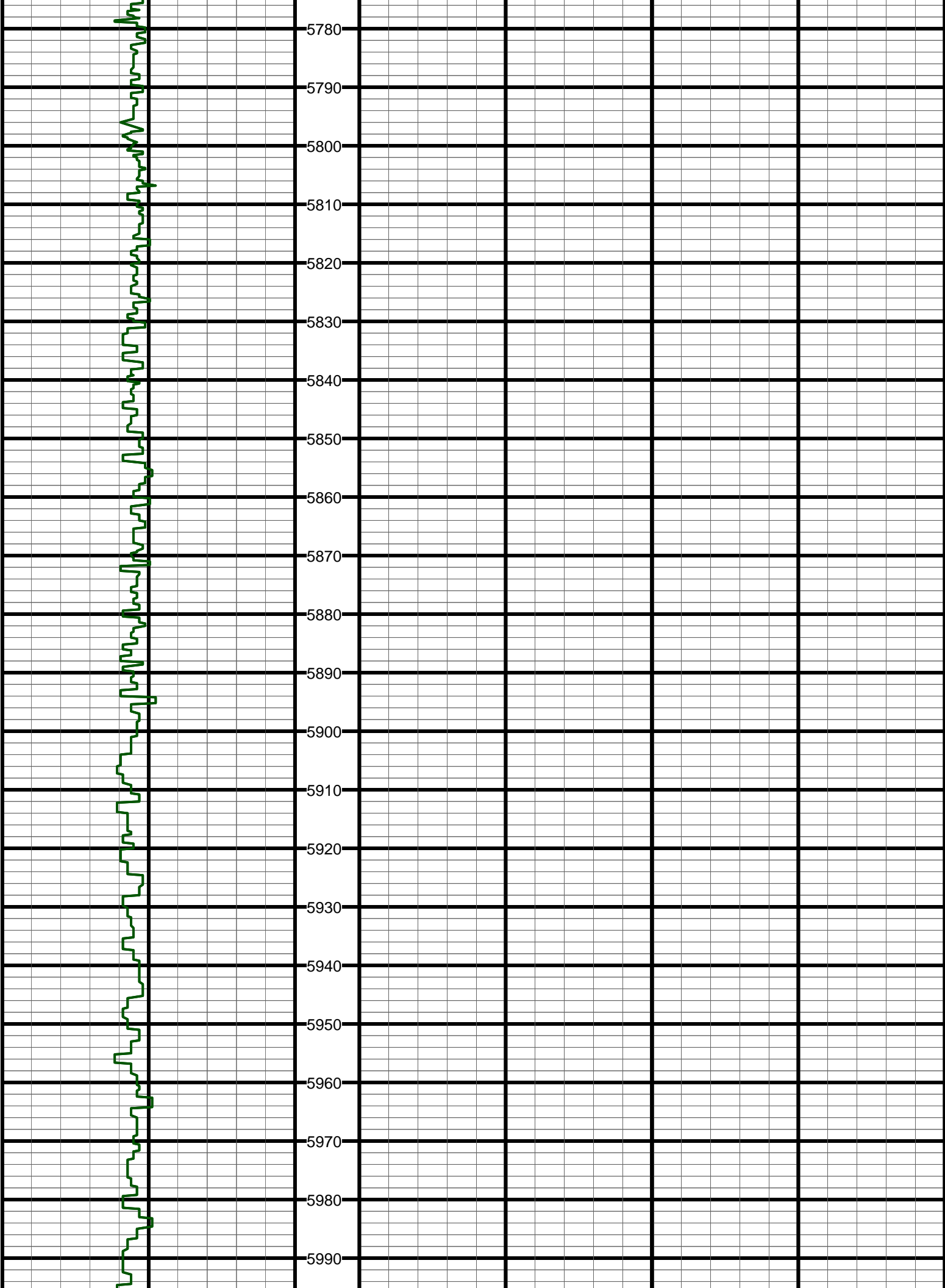


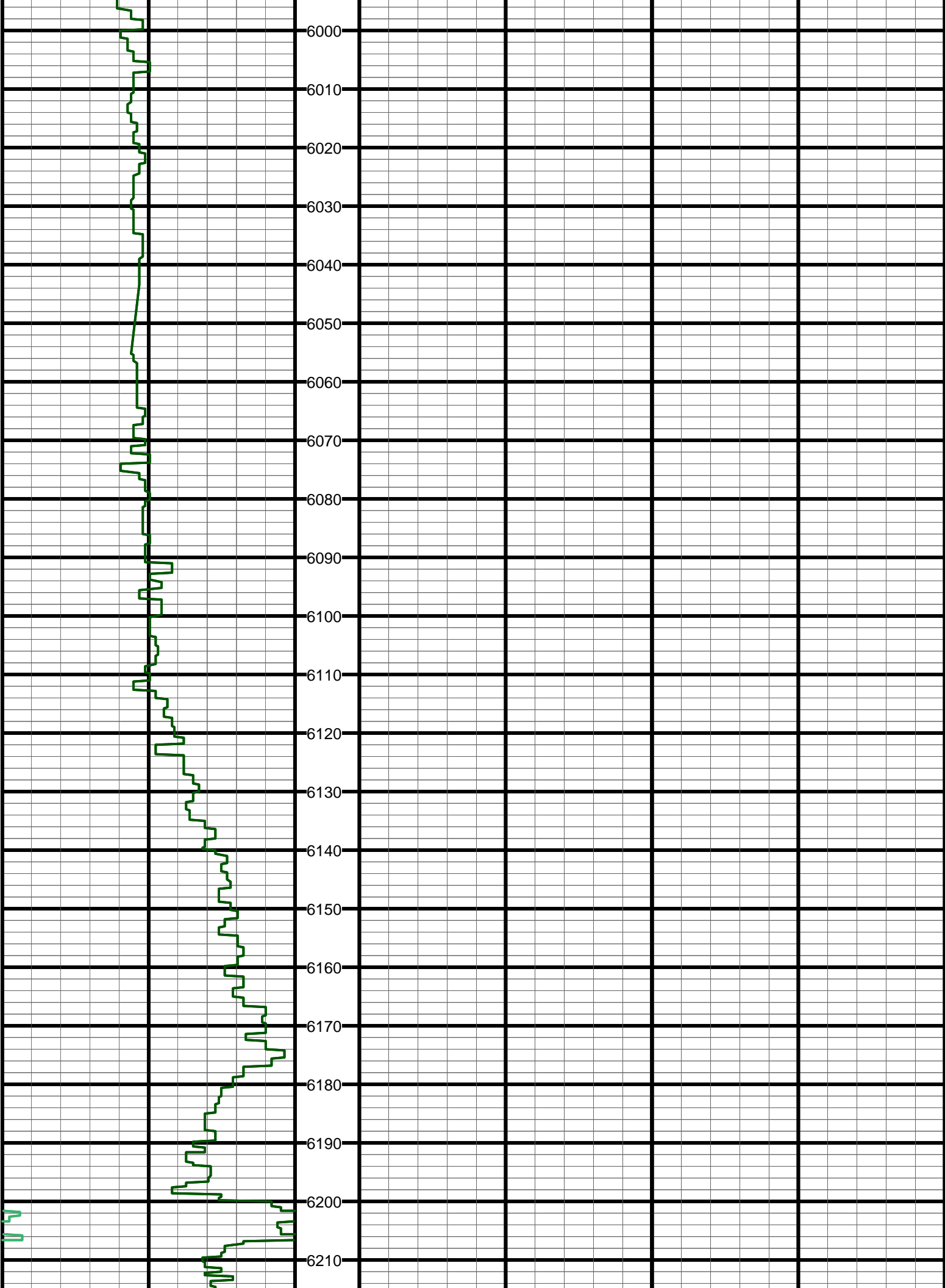




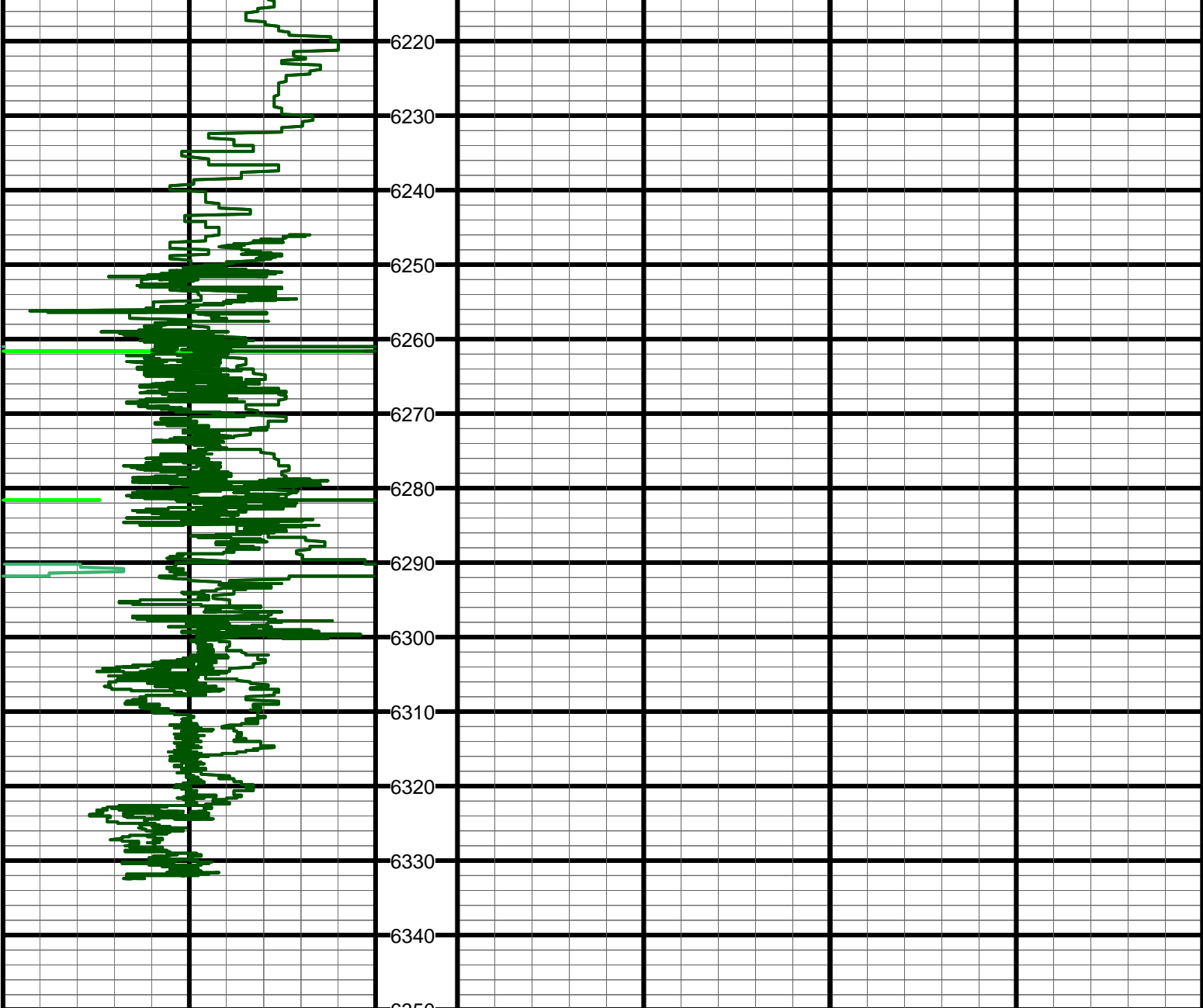












Gamma API (TVD) Track: 1 API		Depth 5":100' (10')	
0	200		
200	400		
400	600		

