

**ENCANA OIL & GAS (USA) INC. - EBUS
DO NOT MAIL - 370 17TH ST STE 1700
DENVER, Colorado**

VOGL-MCCOY 2H-5H-F267

H&P 278

Post Job Summary **Cement Intermediate Casing**

Date Prepared: 2/12/2014
Version: 1

Service Supervisor: LAVALLEY, LARRY

Submitted by: ESTENSSORO, SEBASTIAN

HALLIBURTON

Wellbore Geometry

Job Tubulars					MD		TVD		Shoe Joint Length ft
Type	Description	Size in	ID in	Wt lbm/ft	Top ft	Bottom ft	Top ft	Bottom ft	
Casing	9 5/8" Surface Casing	9.63	8.835	40.00	0.00	854.00			
Open Hole Section	8 3/4" Open Hole Section		8.750		854.00	7,720.00	854.00	7,380.00	
Casing	7" Intermediate Casing String	7.00	6.366	23.00	0.00	7,720.00	0.00	7,380.00	96.00

HALLIBURTON

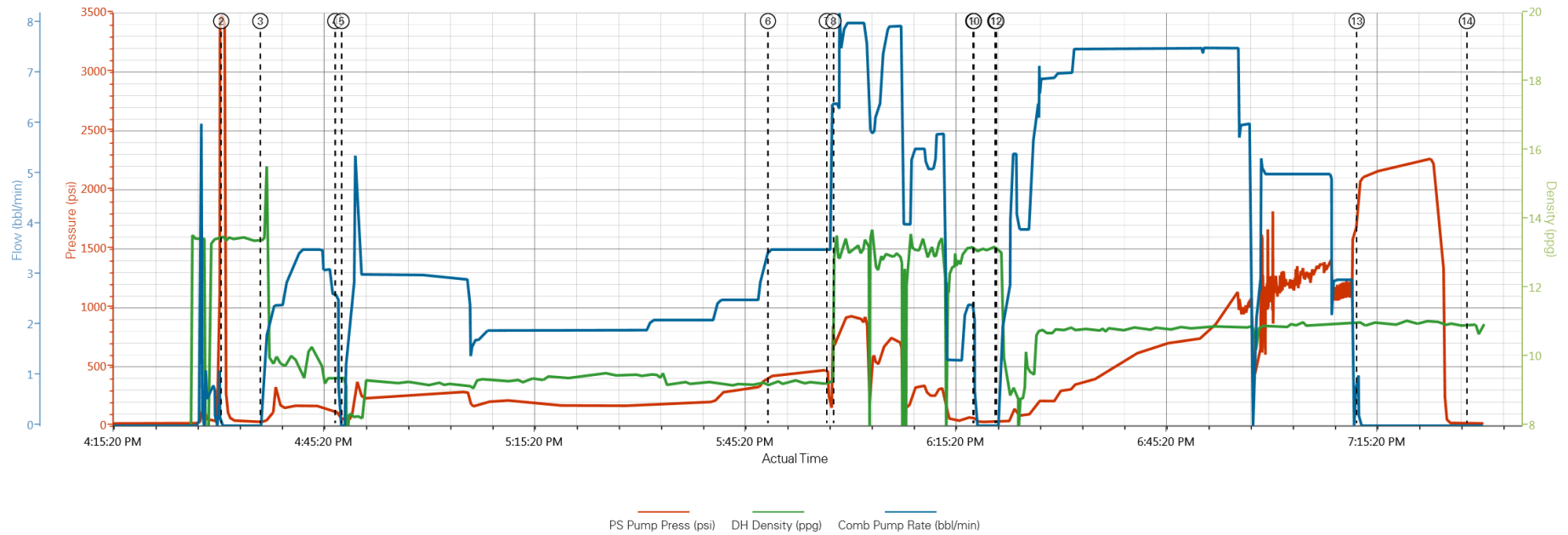
Pumping Schedule

Stage /Plug #	Fluid #	Fluid Type	Fluid Name	Surface Density lbm/gal	Avg Rate bbl/min	Surface Volume	Downhole Volume
1	1	Spacer	WATER SPACER	8.34	3.00	20.0 bbl	20.0 bbl
1	2	Spacer	TUNED SPACER III	10.00	3.00	40.0 bbl	40.0 bbl
1	3	Cement Slurry	TUNED LIGHT (TM) B1	10.00	2.00	295.0 sacks	295.0 sacks
1	4	Cement Slurry	VARICEM B1	13.00	6.00	340.0 sacks	340.0 sacks
1	5	Mud	DISPLACEMENT	10.10	7.00	295.0 bbl	295.0 bbl

HALLIBURTON

Data Acquisition

VOGL-MCCOY, 2H-5H-F267 Intermediate



① Start Job 20;0.1;0 ③ Pump Spacer 1 32;13.39;0 ⑤ Pump Lead Cement 48;9.38;0 ⑦ Drop Bottom Plug 215;9.27;3.5 ⑨ Shutdown 46;13.06;0 ⑪ Drop Top Plug 33;13.14;0 ⑬ Bump Plug 2031;11.04;0
 ② Test Lines 3434;13.45;0 ④ Drop Bottom Plug 117;9.37;2.6 ⑥ Pump Cement 417;9.2;3.5 ⑧ Pump Cement 739;13.54;6.4 ⑩ Clean Lines 40;13.06;0 ⑫ Pump Displacement 33;13.18;0 ⑭ End Job 21;10.89;0

HALLIBURTON

Service Supervisor Reports

Job Log

Date/Time	Chart #	Activity Code	Pump Rate	Cum Vol	Pump		Pressure (psig)	Comments
02/10/2014 10:48		Arrive at Location from Service Center						DID HAZARD HUNT AND ASSESSMENT OF LOCATION
02/10/2014 10:48		Wait on Customer or Customer Sub-Contractor Equip						WAIT ON REMAINDER OF CASING TO BE RAN
02/10/2014 10:48		Wait on Customer or Customer Sub-Contractor Equipm						RIG TURNED OVER TO HES
02/10/2014 10:48		Pre-Job Safety Meeting						WITH ALL 3RD PARTIES ON LOCATION
02/10/2014 15:48		Start Job						
02/10/2014 16:31		Test Lines					3500	RIG WATER WITH NO ADDITIVES
02/10/2014 16:36		Pump Spacer 1	3	40			32	CLEAN SPACER MIXED @ 10.5 PPG
02/10/2014 16:47		Drop Bottom Plug						
02/10/2014 16:48		Pump Lead Cement	2	122.4			48	295 SKS TUNED LIGHT B1 MIXED @ 10.0 PPG YIELD OF 2.33 FT3/SK AND 8.84 GAL/SK
02/10/2014 17:57		Drop Bottom Plug						
02/10/2014 17:58		Pump Tail Cement	6	118			739	340SKS VARICEM B1 MIXED @ 13.0 PPG YIELD OF 1.95 FT3/SK AND 9.87 GAL/SK
02/10/2014 18:18		Shutdown						
02/10/2014 18:18		Clean Lines						RIG WATER WITH NO ADDITIVES
02/10/2014 18:21		Drop Top Plug						PRELOADED HWE TOP PLUG
02/10/2014 18:21		Pump Displacement	7	295			33	DRILLING MUD SUPPLIED BY RIG @ 10.1 PPG
02/10/2014 19:12		Bump Plug					2031	FLOATS HELD
02/10/2014 19:28		End Job						HELD RIG DOWN SAFETY MEETING

The Road to Excellence Starts with Safety

Sold To #: 340078	Ship To #: 3191318	Quote #:	Sales Order #: 901095762
Customer: ENCANA OIL & GAS (USA) INC. - EBUS		Customer Rep: Parker, Charlie	
Well Name: VOGL-MCCOY		Well #: 2H-5H-F267	API/UWI #: 05-123-37781
Field: WATTENBERG	City (SAP): FIRESTONE	County/Parish: Weld	State: Colorado
Lat: N 40.168 deg. OR N 40 deg. 10 min. 5.196 secs.		Long: W 104.915 deg. OR W -105 deg. 5 min. 6.324 secs.	
Contractor: H&P		Rig/Platform Name/Num: H&P278	
Job Purpose: Cement Intermediate Casing			
Well Type: Development Well		Job Type: Cement Intermediate Casing	
Sales Person: GREGORY, JON		Srvc Supervisor: LAVALLEY, LARRY	MBU ID Emp #: 419296

Job Personnel

HES Emp Name	Exp Hrs	Emp #	HES Emp Name	Exp Hrs	Emp #	HES Emp Name	Exp Hrs	Emp #
BROOM, KENDALL L	0.0	524682	KOSAKEWICH, LUKE Wayne	0.0	560003	LAVALLEY, LARRY P	0.0	419296
MYRE, JAMES	0.0	549859	SIMMONS, KEATON J	0.0	524850			

Equipment

HES Unit #	Distance-1 way	HES Unit #	Distance-1 way	HES Unit #	Distance-1 way	HES Unit #	Distance-1 way
10241536C	15 mile	10982754	15 mile	11064046	15 mile	11488570C	15 mile
11518549	15 mile	11527037	15 mile	11527041C	15 mile	11608503C	15 mile

Job Hours

Date	On Location Hours	Operating Hours	Date	On Location Hours	Operating Hours	Date	On Location Hours	Operating Hours

TOTAL	Total is the sum of each column separately							
-------	--	--	--	--	--	--	--	--

Job

Job Times

Formation Name					Date	Time	Time Zone
Formation Depth (MD)	Top		Bottom		Called Out	10 - Feb - 2014	10:00 MST
Form Type	BHST				On Location	10 - Feb - 2014	00:00 MST
Job depth MD	7720. ft		Job Depth TVD	7380. ft	Job Started	10 - Feb - 2014	00:00 MST
Water Depth			Wk Ht Above Floor	6. ft	Job Completed	10 - Feb - 2014	00:00 MST
Perforation Depth (MD)	From		To		Departed Loc	10 - Feb - 2014	00:00 MST

Well Data

Description	New / Used	Max pressure psig	Size in	ID in	Weight lbm/ft	Thread	Grade	Top MD ft	Bottom MD ft	Top TVD ft	Bottom TVD ft
8 3/4" Open Hole Section				8.75				854.	7720.	854.	7380.
7" Intermediate Casing String	Unknown		7.	6.366	23.		N-80	.	7720.	.	7380.
9 5/8" Surface Casing	Unknown		9.625	8.835	40.		N-80	.	854.		

Sales/Rental/3rd Party (HES)

Description	Qty	Qty uom	Depth	Supplier
CMT CASING EQUIPMENT BOM	1	JOB		
Description	Qty	Qty uom	Depth	Supplier

MILEAGE FOR CEMENTING CREW,ZI	40	MI		
ZI FUEL SURCHG-CARS/PICKUPS<1 1/2TON	40	MI		
PLUG,CMTG,TOP,7,HWE,5.66 MIN/6.54 MAX CS	1	EA		
PLUG,CMTG,BOT,7,HWE,5.66 MIN/6.54 MAX CS	2	EA		
KIT,HALL WELD-A	2	EA		
CLR,FLT,7 DWC/C 26 PPF,P/Q,4-1/4 SSII	1	EA		
SH,FLT,7 DWC/C 26PP,P/Q,4-1/4 SSII,TPRD	1	EA		

Fluid Data

Stage/Plug #: 1

Fluid #	Stage Type	Fluid Name	Qty	Qty uom	Mixing Density lbm/gal	Yield ft3/sk	Mix Fluid Gal/sk	Rate bbl/min	Total Mix Fluid Gal/sk
1	WATER SPACER		20.00	bbl	8.34			3.0	
2	TUNED SPACER III	TUNED SPACER III - SBM (483826)	40.00	bbl	10.	5.92	2440.0	3.0	
	61 lbm/bbl	BARITE, BULK (100003681)							
	39.07 gal/bbl	FRESH WATER							
3	TUNED LIGHT (TM) B1	TUNED LIGHT (TM) SYSTEM (452984)	295.0	sacks	10.	2.33	8.84	2.0	8.84
	8.84 Gal	FRESH WATER							
4	VARICEM B1	VARICEM (TM) CEMENT (452009)	340.0	sacks	13.	1.95	9.87	6.0	9.87
	9.87 Gal	FRESH WATER							
5	DISPLACEMENT		295.00	bbl	10.1			7.0	

The Information Stated Herein Is Correct

Customer Representative Signature

