

# **BONANZA CREEK ENERGY INC.**

**WELD COUNTY, COLORADO (NAD 83)**

**NW NW SEC. 33 T5N R63W 6th P.M.**

**NORTH PLATTE 11-41-33HC**

**JOB #: 2009-381**

**30 October, 2014**

**Survey: FINAL SURVEYS**





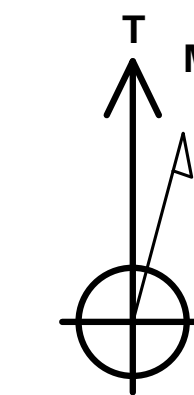
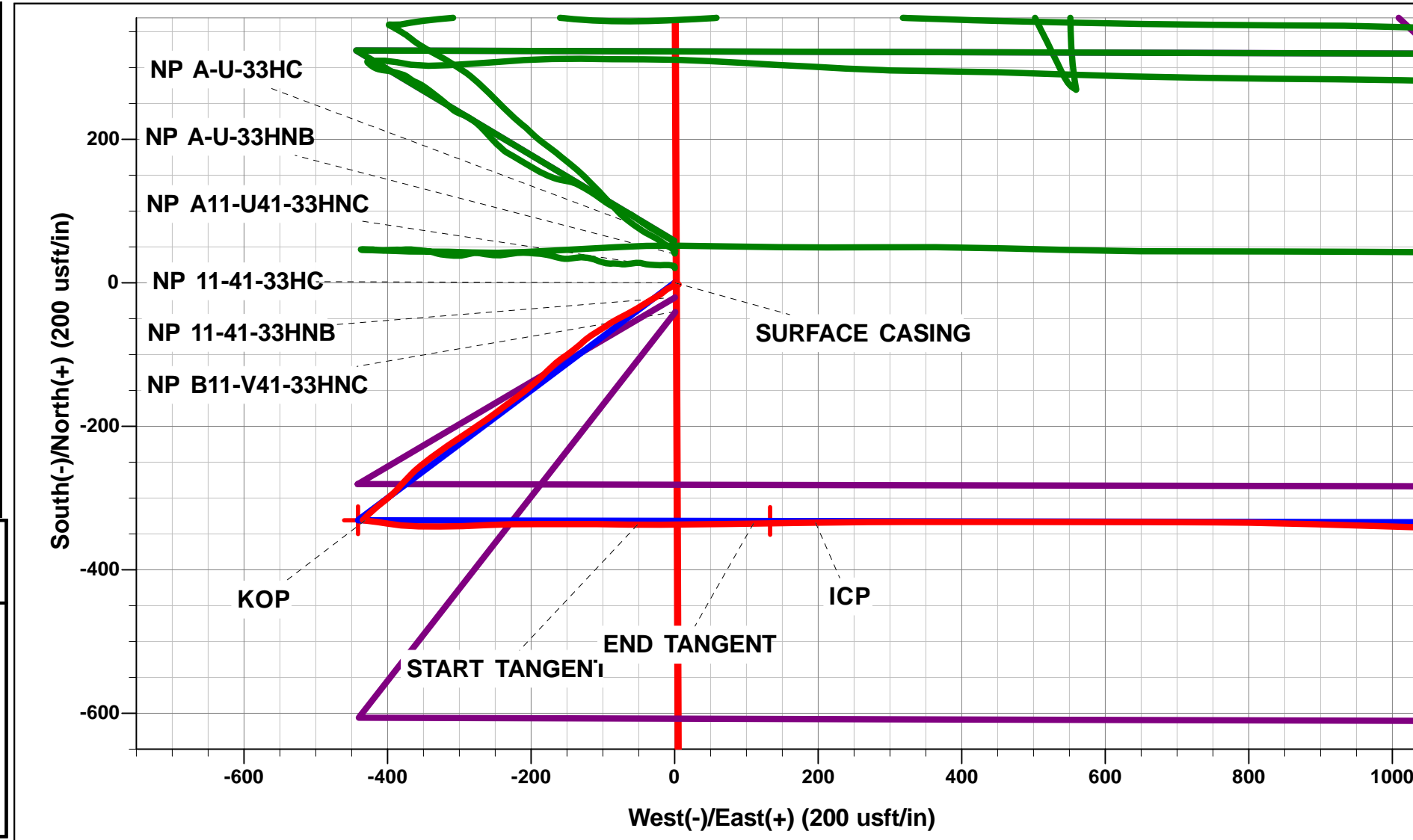
Project: WELD COUNTY, COLORADO (NAD 83)  
 Site: NW NW SEC. 33 T5N R63W 6th P.M.  
 Well: NORTH PLATTE 11-41-33HC  
 Wellbore: JOB #: 2009-381  
 Design: FINAL SURVEYS

ANNOTATIONS

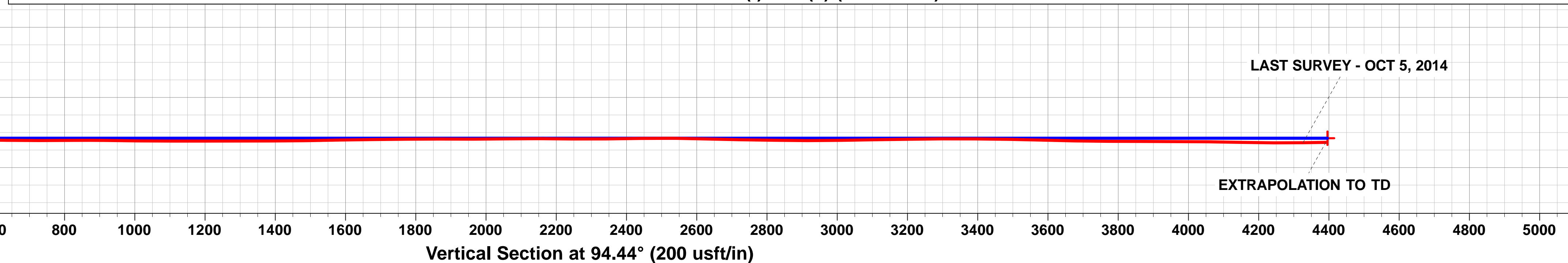
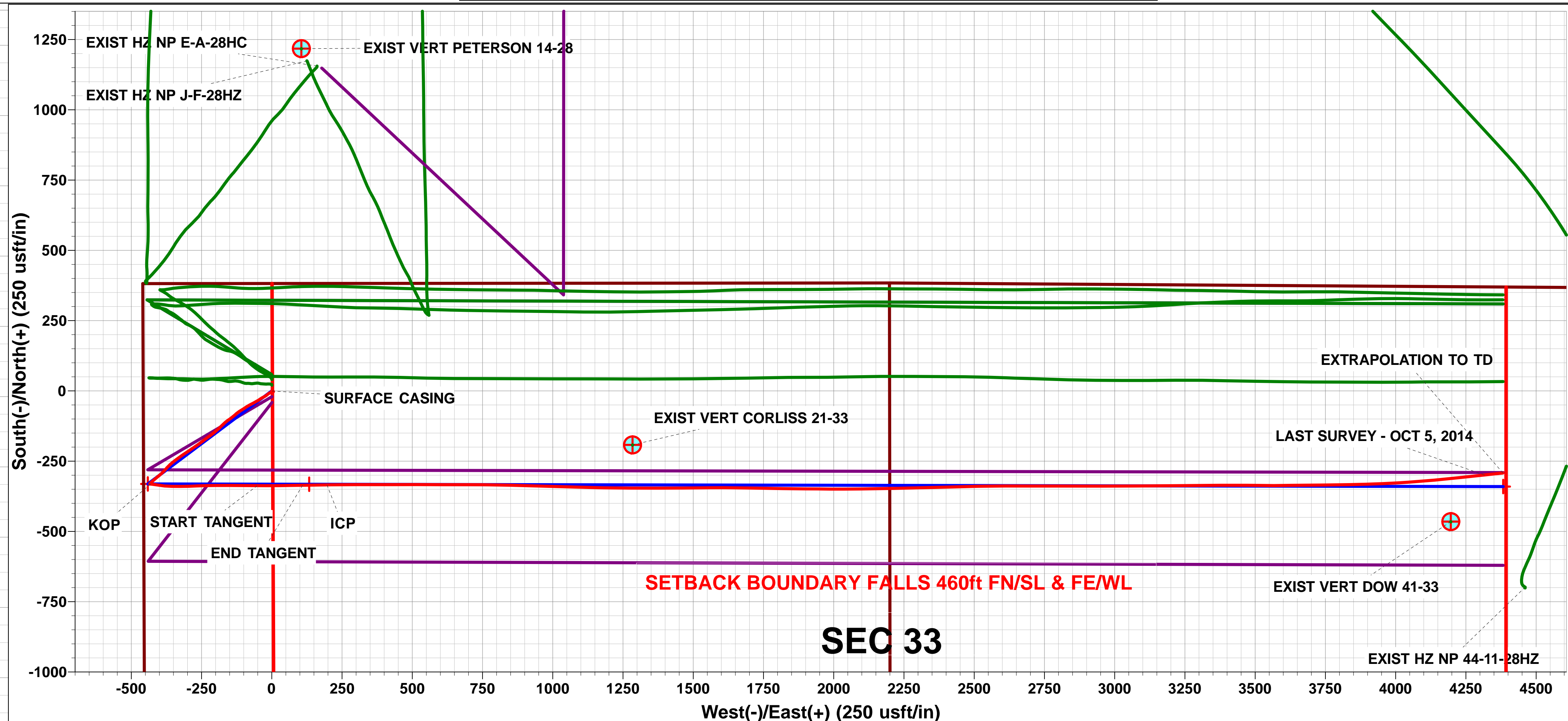
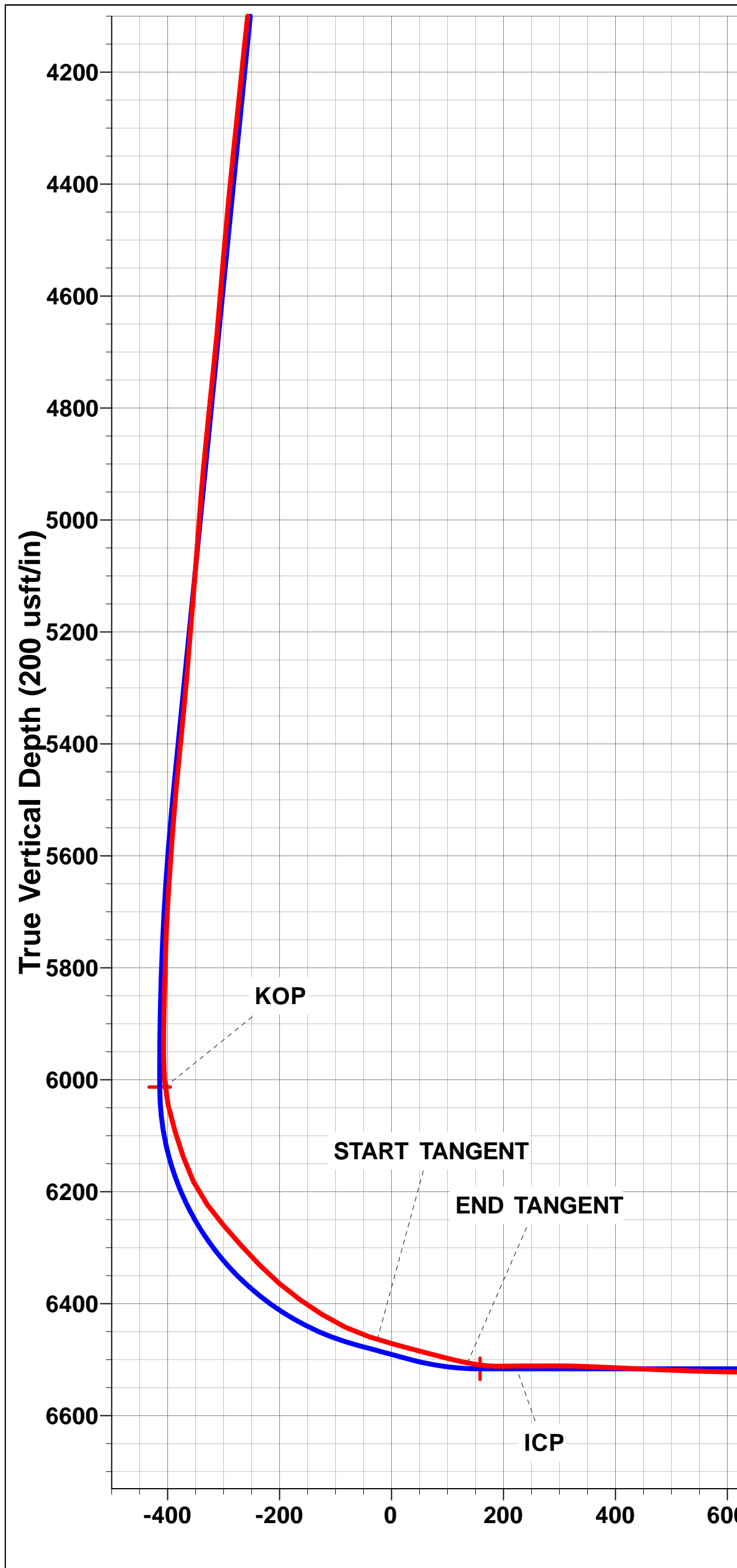
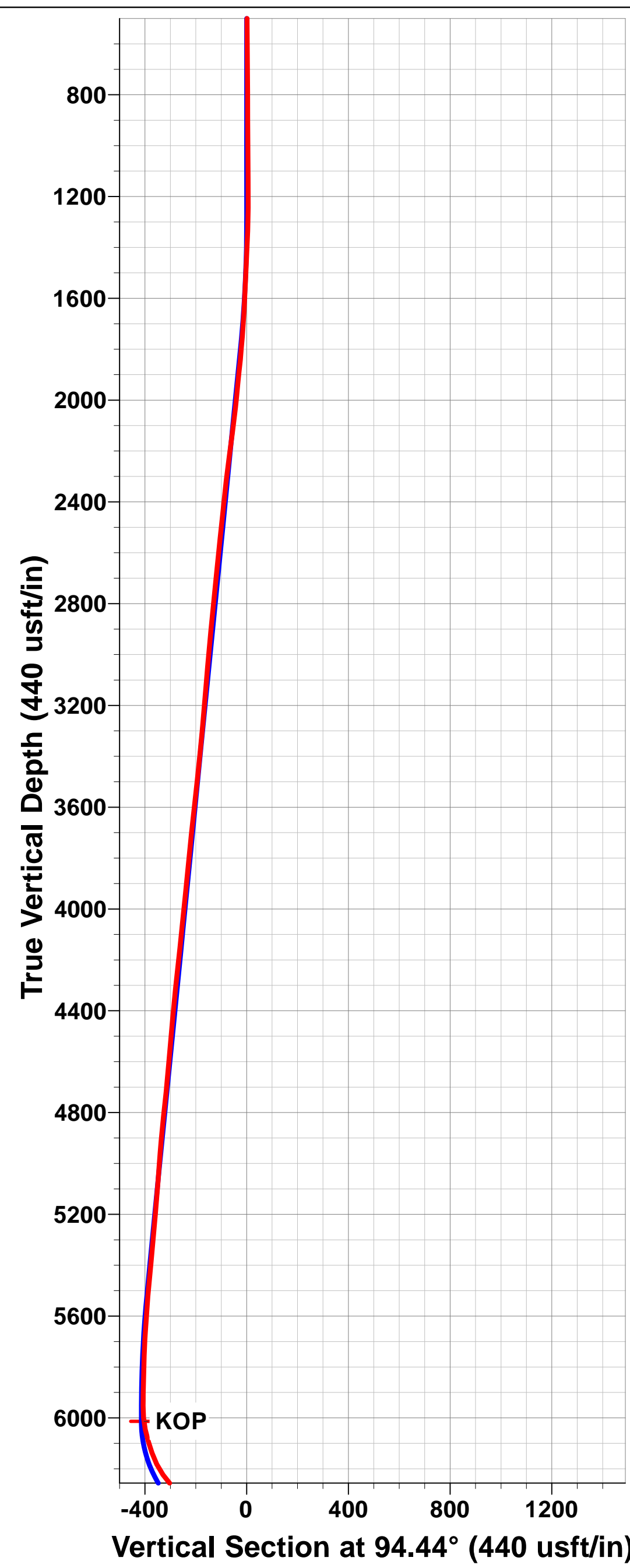
TVD	MD	Inc	Azi	+N/-S	+E/-W	Vsect	Dep	Annotation
452.0	452.0	0.30	99.00	-0.2	1.2	1.2	1.2	SURFACE CASING
6013.2	6048.0	6.73	96.61	-331.2	-431.4	-404.5	563.3	KOP
6463.8	6668.0	72.86	90.43	-337.1	-51.6	-25.3	943.0	START TANGENT
6505.9	6835.0	78.73	89.10	-335.5	110.0	135.6	1104.6	END TANGENT
6511.5	6922.0	90.60	89.30	-334.4	196.5	221.8	1191.1	ICP
6529.3	11044.0	90.80	84.00	-298.8	4316.2	4326.4	5312.6	LAST SURVEY - OCT 5, 2014
6528.4	11110.0	90.80	84.00	-291.9	4381.8	4391.3	5378.6	EXTRAPOLATION TO TD

WELLBORE TARGET DETAILS (LAT/LONG)

Name	TVD	+N/-S	+E/-W	Latitude	Longitude	Shape
BHL - NORTH PLATTE 11-41-33HC (P2)	6516.5	-340.2	4382.8	40.361282	-104.433081	Point
ICP *NEW* - NORTH PLATTE 11-41-33HC (P2)	6516.5	-332.0	133.1	40.361306	-104.448331	Point
KOP - NORTH PLATTE 11-41-33HC (P2)	6013.2	-330.9	-441.0	40.361309	-104.450391	Point



Azimuths to True North  
 Magnetic North: 8.30°  
 Magnetic Field  
 Strength: 52845.1snT  
 Dip Angle: 66.97°  
 Date: 25/04/2014  
 Model: IGRF2010



# Survey Report



<b>Company:</b>	BONANZA CREEK ENERGY INC.	<b>Local Co-ordinate Reference:</b>	Well NORTH PLATTE 11-41-33HC
<b>Project:</b>	WELD COUNTY, COLORADO (NAD 83)	<b>TVD Reference:</b>	KB @ 4586.5usft (CADE 25)
<b>Site:</b>	NW NW SEC. 33 T5N R63W 6th P.M.	<b>MD Reference:</b>	KB @ 4586.5usft (CADE 25)
<b>Well:</b>	NORTH PLATTE 11-41-33HC	<b>North Reference:</b>	True
<b>Wellbore:</b>	JOB #: 2009-381	<b>Survey Calculation Method:</b>	Minimum Curvature
<b>Design:</b>	FINAL SURVEYS	<b>Database:</b>	EDM 5000.1 Single User Db

<b>Project</b> WELD COUNTY, COLORADO (NAD 83)			
<b>Map System:</b>	US State Plane 1983	<b>System Datum:</b>	Mean Sea Level
<b>Geo Datum:</b>	North American Datum 1983		
<b>Map Zone:</b>	Colorado Northern Zone		Using geodetic scale factor

<b>Site</b> NW NW SEC. 33 T5N R63W 6th P.M.			
<b>Site Position:</b>		<b>Northing:</b>	1,376,592.57 usft
<b>From:</b>	Lat/Long	<b>Easting:</b>	3,292,923.73 usft
<b>Position Uncertainty:</b>	0.0 usft	<b>Slot Radius:</b>	1.10000ft
		<b>Latitude:</b>	40.362382
		<b>Longitude:</b>	-104.448807
		<b>Grid Convergence:</b>	0.68 °

<b>Well</b> NORTH PLATTE 11-41-33HC			
<b>Well Position</b>	+N-S	0.0 usft	<b>Northing:</b> 1,376,532.44 usft
	+E-W	0.0 usft	<b>Easting:</b> 3,292,924.16 usft
<b>Position Uncertainty</b>		0.0 usft	<b>Wellhead Elevation:</b> usft
			<b>Latitude:</b> 40.362217
			<b>Longitude:</b> -104.448808
			<b>Ground Level:</b> 4,569.5 usft

<b>Wellbore</b> JOB #: 2009-381					
Magnetics	Model Name	Sample Date	Declination (°)	Dip Angle (°)	Field Strength (nT)
	IGRF2010	25/04/2014	8.30	66.97	52,845

<b>Design</b> FINAL SURVEYS				
<b>Audit Notes:</b>				
<b>Version:</b>	1.0	<b>Phase:</b>	ACTUAL	<b>Tie On Depth:</b> 0.0
<b>Vertical Section:</b>	<b>Depth From (TVD) (usft)</b>	<b>+N-S (usft)</b>	<b>+E-W (usft)</b>	<b>Direction (°)</b>
	0.0	0.0	0.0	94.44

<b>Survey Program</b>		<b>Date</b> 07/10/2014		
From (usft)	To (usft)	Survey (Wellbore)	Tool Name	Description
452.0	11,110.0	FINAL SURVEYS (JOB #: 2009-381)	MWD	MWD - Standard

<b>Survey</b>											
Measured Depth (usft)	Inclination (°)	Azimuth (°)	Vertical Depth (usft)	Subsea Depth (usft)	+N-S (usft)	+E-W (usft)	Vertical Section (usft)	Dogleg Rate (°/100usft)	Build Rate (°/100usft)	Turn Rate (°/100usft)	
0.0	0.00	0.00	0.0	4,586.5	0.0	0.0	0.0	0.00	0.00	0.00	
<b>SURFACE CASING</b>											
452.0	0.30	99.00	452.0	4,134.5	-0.2	1.2	1.2	0.07	0.07	0.00	
513.0	0.40	71.40	513.0	4,073.5	-0.1	1.5	1.5	0.32	0.16	-45.25	
605.0	0.50	101.60	605.0	3,981.5	-0.1	2.2	2.2	0.28	0.11	32.83	
697.0	0.40	109.30	697.0	3,889.5	-0.3	2.9	2.9	0.13	-0.11	8.37	
788.0	0.50	134.60	788.0	3,798.5	-0.7	3.5	3.5	0.24	0.11	27.80	
880.0	0.30	139.70	880.0	3,706.5	-1.2	3.9	4.0	0.22	-0.22	5.54	
972.0	0.20	114.80	972.0	3,614.5	-1.4	4.2	4.3	0.16	-0.11	-27.07	
1,063.0	0.60	124.40	1,063.0	3,523.5	-1.7	4.8	4.9	0.44	0.44	10.55	
1,154.0	0.50	134.30	1,154.0	3,432.5	-2.3	5.5	5.6	0.15	-0.11	10.88	
1,244.0	0.30	356.10	1,244.0	3,342.5	-2.3	5.7	5.9	0.83	-0.22	-153.56	
1,335.0	2.60	260.00	1,334.9	3,251.6	-2.4	3.7	3.9	2.91	2.53	-105.60	

# Survey Report



<b>Company:</b>	BONANZA CREEK ENERGY INC.	<b>Local Co-ordinate Reference:</b>	Well NORTH PLATTE 11-41-33HC
<b>Project:</b>	WELD COUNTY, COLORADO (NAD 83)	<b>TVD Reference:</b>	KB @ 4586.5usft (CADE 25)
<b>Site:</b>	NW NW SEC. 33 T5N R63W 6th P.M.	<b>MD Reference:</b>	KB @ 4586.5usft (CADE 25)
<b>Well:</b>	NORTH PLATTE 11-41-33HC	<b>North Reference:</b>	True
<b>Wellbore:</b>	JOB #: 2009-381	<b>Survey Calculation Method:</b>	Minimum Curvature
<b>Design:</b>	FINAL SURVEYS	<b>Database:</b>	EDM 5000.1 Single User Db

## Survey

Measured Depth (usft)	Inclination (°)	Azimuth (°)	Vertical Depth (usft)	Subsea Depth (usft)	+N/-S (usft)	+E/-W (usft)	Vertical Section (usft)	Dogleg Rate (°/100usft)	Build Rate (°/100usft)	Turn Rate (°/100usft)
1,427.0	2.70	244.30	1,426.8	3,159.7	-3.8	-0.3	0.0	0.79	0.11	-17.07
1,520.0	3.00	243.80	1,519.7	3,066.8	-5.8	-4.5	-4.0	0.32	0.32	-0.54
1,612.0	3.40	241.50	1,611.6	2,974.9	-8.1	-9.0	-8.4	0.46	0.43	-2.50
1,705.0	5.40	229.00	1,704.3	2,882.2	-12.3	-14.8	-13.8	2.37	2.15	-13.44
1,798.0	6.20	239.10	1,796.8	2,789.7	-17.8	-22.4	-20.9	1.39	0.86	10.86
1,890.0	7.50	241.00	1,888.2	2,698.3	-23.2	-31.9	-30.0	1.43	1.41	2.07
1,985.0	6.40	235.60	1,982.5	2,604.0	-29.2	-41.7	-39.3	1.35	-1.16	-5.68
2,080.0	8.90	240.50	2,076.6	2,509.9	-35.8	-52.5	-49.5	2.72	2.63	5.16
2,176.0	8.80	241.50	2,171.5	2,415.0	-43.0	-65.4	-61.8	0.19	-0.10	1.04
2,271.0	8.40	243.10	2,265.4	2,321.1	-49.6	-77.9	-73.9	0.49	-0.42	1.68
2,366.0	8.00	236.60	2,359.4	2,227.1	-56.4	-89.7	-85.0	1.06	-0.42	-6.84
2,461.0	7.30	236.10	2,453.6	2,132.9	-63.4	-100.2	-95.0	0.74	-0.74	-0.53
2,555.0	7.60	240.50	2,546.8	2,039.7	-69.8	-110.6	-104.8	0.69	0.32	4.68
2,651.0	7.90	230.40	2,641.9	1,944.6	-77.1	-121.2	-114.8	1.45	0.31	-10.52
2,747.0	7.80	228.90	2,737.0	1,849.5	-85.6	-131.2	-124.1	0.24	-0.10	-1.56
2,842.0	7.60	232.00	2,831.2	1,755.3	-93.7	-141.0	-133.3	0.49	-0.21	3.26
2,936.0	7.10	234.50	2,924.4	1,662.1	-100.9	-150.6	-142.3	0.63	-0.53	2.66
3,031.0	6.60	234.70	3,018.7	1,567.8	-107.5	-159.8	-151.0	0.53	-0.53	0.21
3,127.0	7.00	227.60	3,114.1	1,472.4	-114.6	-168.6	-159.3	0.97	0.42	-7.40
3,223.0	6.90	224.50	3,209.4	1,377.1	-122.7	-177.0	-167.0	0.40	-0.10	-3.23
3,318.0	8.10	227.60	3,303.5	1,283.0	-131.3	-186.0	-175.2	1.33	1.26	3.26
3,413.0	8.00	229.20	3,397.6	1,188.9	-140.1	-195.9	-184.5	0.26	-0.11	1.68
3,510.0	8.40	229.20	3,493.6	1,092.9	-149.1	-206.4	-194.2	0.41	0.41	0.00
3,605.0	8.40	234.80	3,587.6	998.9	-157.7	-217.3	-204.4	0.86	0.00	5.89
3,700.0	7.80	234.00	3,681.6	904.9	-165.5	-228.2	-214.7	0.64	-0.63	-0.84
3,797.0	7.80	233.40	3,777.7	808.8	-173.2	-238.8	-224.7	0.08	0.00	-0.62
3,892.0	7.40	231.90	3,871.9	714.6	-180.9	-248.8	-234.0	0.47	-0.42	-1.58
3,987.0	7.50	233.80	3,966.1	620.4	-188.3	-258.6	-243.2	0.28	0.11	2.00
4,081.0	7.60	236.10	4,059.3	527.2	-195.4	-268.7	-252.8	0.34	0.11	2.45
4,176.0	7.50	237.80	4,153.5	433.0	-202.2	-279.2	-262.7	0.26	-0.11	1.79
4,271.0	7.60	235.90	4,247.6	338.9	-209.0	-289.6	-272.6	0.28	0.11	-2.00
4,366.0	7.70	234.70	4,341.8	244.7	-216.2	-300.0	-282.4	0.20	0.11	-1.26
4,461.0	6.90	236.90	4,436.0	150.5	-223.0	-310.0	-291.8	0.89	-0.84	2.32
4,555.0	6.20	234.70	4,529.4	57.1	-229.0	-318.9	-300.2	0.79	-0.74	-2.34
4,651.0	6.20	234.10	4,624.9	-38.4	-235.1	-327.3	-308.1	0.07	0.00	-0.62
4,746.0	7.60	235.90	4,719.2	-132.7	-241.6	-336.6	-316.9	1.49	1.47	1.89
4,842.0	8.00	231.10	4,814.3	-227.8	-249.4	-347.1	-326.8	0.80	0.42	-5.00
4,938.0	7.50	229.40	4,909.4	-322.9	-257.6	-357.1	-336.0	0.57	-0.52	-1.77
5,035.0	6.30	224.30	5,005.7	-419.2	-265.6	-365.6	-343.9	1.39	-1.24	-5.26
5,130.0	7.20	223.20	5,100.0	-513.5	-273.6	-373.3	-351.0	0.96	0.95	-1.16
5,225.0	7.60	222.90	5,194.2	-607.7	-282.6	-381.7	-358.6	0.42	0.42	-0.32
5,320.0	7.40	223.80	5,288.4	-701.9	-291.6	-390.2	-366.4	0.24	-0.21	0.95
5,414.0	8.10	232.20	5,381.6	-795.1	-300.0	-399.6	-375.2	1.41	0.74	8.94
5,509.0	7.10	230.30	5,475.7	-889.2	-307.9	-409.4	-384.3	1.09	-1.05	-2.00
5,604.0	6.00	228.20	5,570.1	-983.6	-314.9	-417.6	-392.0	1.18	-1.16	-2.21
5,699.0	5.40	227.50	5,664.7	-1,078.2	-321.3	-424.6	-398.5	0.64	-0.63	-0.74
5,795.0	3.00	223.40	5,760.4	-1,173.9	-326.1	-429.7	-403.1	2.52	-2.50	-4.27
5,891.0	1.90	227.50	5,856.3	-1,269.8	-329.0	-432.6	-405.8	1.16	-1.15	4.27
5,943.0	1.60	220.80	5,908.3	-1,321.8	-330.2	-433.7	-406.8	0.70	-0.58	-12.88
5,986.0	0.60	236.10	5,951.3	-1,364.8	-330.7	-434.3	-407.4	2.40	-2.33	35.58
6,034.0	4.20	95.60	5,999.2	-1,412.7	-331.1	-432.7	-405.8	9.75	7.50	-292.71
<b>KOP</b>										
<b>6,048.0</b>	<b>6.73</b>	<b>96.61</b>	<b>6,013.2</b>	<b>-1,426.7</b>	<b>-331.2</b>	<b>-431.4</b>	<b>-404.5</b>	<b>18.09</b>	<b>18.08</b>	<b>7.21</b>

# Survey Report



<b>Company:</b>	BONANZA CREEK ENERGY INC.	<b>Local Co-ordinate Reference:</b>	Well NORTH PLATTE 11-41-33HC
<b>Project:</b>	WELD COUNTY, COLORADO (NAD 83)	<b>TVD Reference:</b>	KB @ 4586.5usft (CADE 25)
<b>Site:</b>	NW NW SEC. 33 T5N R63W 6th P.M.	<b>MD Reference:</b>	KB @ 4586.5usft (CADE 25)
<b>Well:</b>	NORTH PLATTE 11-41-33HC	<b>North Reference:</b>	True
<b>Wellbore:</b>	JOB #: 2009-381	<b>Survey Calculation Method:</b>	Minimum Curvature
<b>Design:</b>	FINAL SURVEYS	<b>Database:</b>	EDM 5000.1 Single User Db

## Survey

Measured Depth (usft)	Inclination (°)	Azimuth (°)	Vertical Depth (usft)	Subsea Depth (usft)	+N-S (usft)	+E-W (usft)	Vertical Section (usft)	Dogleg Rate (°/100usft)	Build Rate (°/100usft)	Turn Rate (°/100usft)
6,081.0	12.70	97.40	6,045.7	-1,459.2	-331.9	-425.9	-398.9	18.09	18.09	2.40
6,129.0	16.70	97.90	6,092.1	-1,505.6	-333.5	-413.8	-386.7	8.34	8.33	1.04
6,177.0	19.00	99.10	6,137.8	-1,551.3	-335.7	-399.2	-372.1	4.85	4.79	2.50
6,225.0	26.10	95.80	6,182.1	-1,595.6	-338.0	-381.0	-353.7	15.02	14.79	-6.87
6,273.0	35.70	91.40	6,223.2	-1,636.7	-339.4	-356.4	-329.1	20.53	20.00	-9.17
6,321.0	40.50	89.70	6,261.0	-1,674.5	-339.7	-326.8	-299.6	10.24	10.00	-3.54
6,369.0	42.70	87.90	6,296.9	-1,710.4	-339.0	-295.0	-267.9	5.22	4.58	-3.75
6,417.0	44.30	87.40	6,331.7	-1,745.2	-337.6	-262.0	-235.0	3.41	3.33	-1.04
6,464.0	49.60	88.90	6,363.8	-1,777.3	-336.6	-227.6	-200.9	11.51	11.28	3.19
6,512.0	54.60	90.20	6,393.3	-1,806.8	-336.3	-189.8	-163.2	10.63	10.42	2.71
6,559.0	57.90	89.70	6,419.4	-1,832.9	-336.2	-150.7	-124.2	7.08	7.02	-1.06
6,607.0	64.80	90.70	6,442.4	-1,855.9	-336.4	-108.6	-82.3	14.49	14.37	2.08
6,654.0	72.10	90.70	6,459.6	-1,873.1	-336.9	-64.9	-38.7	15.53	15.53	0.00
<b>START TANGENT</b>										
<b>6,668.0</b>	<b>72.86</b>	<b>90.43</b>	<b>6,463.8</b>	<b>-1,877.3</b>	<b>-337.1</b>	<b>-51.6</b>	<b>-25.3</b>	<b>5.71</b>	<b>5.41</b>	<b>-1.89</b>
6,702.0	74.70	89.80	6,473.3	-1,886.8	-337.1	-18.9	7.2	5.71	5.42	-1.87
6,749.0	75.20	89.30	6,485.5	-1,899.0	-336.8	26.4	52.4	1.48	1.06	-1.06
6,797.0	75.90	89.10	6,497.5	-1,911.0	-336.1	72.9	98.7	1.51	1.46	-0.42
<b>END TANGENT</b>										
<b>6,835.0</b>	<b>78.73</b>	<b>89.10</b>	<b>6,505.9</b>	<b>-1,919.4</b>	<b>-335.5</b>	<b>110.0</b>	<b>135.6</b>	<b>7.45</b>	<b>7.45</b>	<b>0.00</b>
6,844.0	79.40	89.10	6,507.6	-1,921.1	-335.4	118.8	144.4	7.45	7.45	0.00
6,895.0	90.90	89.30	6,511.9	-1,925.4	-334.7	169.6	194.9	22.55	22.55	0.39
<b>ICP</b>										
<b>6,922.0</b>	<b>90.60</b>	<b>89.30</b>	<b>6,511.5</b>	<b>-1,925.0</b>	<b>-334.4</b>	<b>196.5</b>	<b>221.8</b>	<b>1.11</b>	<b>-1.11</b>	<b>0.00</b>
6,995.0	89.80	89.30	6,511.3	-1,924.8	-333.5	269.5	294.5	1.10	-1.10	0.00
7,052.0	87.60	90.30	6,512.5	-1,926.0	-333.3	326.5	351.3	4.24	-3.86	1.75
7,146.0	87.40	89.70	6,516.6	-1,930.1	-333.3	420.4	445.0	0.67	-0.21	-0.64
7,240.0	88.00	90.20	6,520.4	-1,933.9	-333.2	514.4	538.6	0.83	0.64	0.53
7,336.0	89.50	90.30	6,522.5	-1,936.0	-333.6	610.3	634.3	1.57	1.56	0.10
7,431.0	89.90	89.80	6,523.0	-1,936.5	-333.7	705.3	729.0	0.67	0.42	-0.53
7,525.0	90.50	90.90	6,522.7	-1,936.2	-334.3	799.3	822.8	1.33	0.64	1.17
7,619.0	89.30	91.80	6,522.8	-1,936.3	-336.5	893.3	916.7	1.60	-1.28	0.96
7,714.0	89.30	91.60	6,524.0	-1,937.5	-339.3	988.2	1,011.5	0.21	0.00	-0.21
7,811.0	89.90	91.80	6,524.7	-1,938.2	-342.2	1,085.2	1,108.4	0.65	0.62	0.21
7,905.0	90.20	91.10	6,524.6	-1,938.1	-344.6	1,179.2	1,202.3	0.81	0.32	-0.74
8,001.0	90.00	90.30	6,524.4	-1,937.9	-345.7	1,275.2	1,298.1	0.86	-0.21	-0.83
8,097.0	90.20	90.00	6,524.3	-1,937.8	-346.0	1,371.2	1,393.8	0.38	0.21	-0.31
8,192.0	90.70	89.30	6,523.5	-1,937.0	-345.4	1,466.2	1,488.5	0.91	0.53	-0.74
8,287.0	91.40	89.50	6,521.8	-1,935.3	-344.4	1,561.1	1,583.1	0.77	0.74	0.21
8,382.0	90.40	90.70	6,520.3	-1,933.8	-344.6	1,656.1	1,677.8	1.64	-1.05	1.26
8,477.0	90.90	91.40	6,519.2	-1,932.7	-346.3	1,751.1	1,772.6	0.91	0.53	0.74
8,572.0	89.50	90.30	6,518.9	-1,932.4	-347.7	1,846.1	1,867.5	1.87	-1.47	-1.16
8,668.0	90.20	90.90	6,519.1	-1,932.6	-348.7	1,942.1	1,963.2	0.96	0.73	0.62
8,763.0	90.90	89.70	6,518.2	-1,931.7	-349.2	2,037.1	2,058.0	1.46	0.74	-1.26
8,857.0	89.40	88.90	6,518.0	-1,931.5	-348.1	2,131.1	2,151.6	1.81	-1.60	-0.85
8,952.0	89.80	88.90	6,518.6	-1,932.1	-346.3	2,226.0	2,246.2	0.42	0.42	0.00
9,048.0	90.40	88.60	6,518.5	-1,932.0	-344.2	2,322.0	2,341.7	0.70	0.62	-0.31
9,144.0	91.20	88.40	6,517.1	-1,930.6	-341.6	2,418.0	2,437.2	0.86	0.83	-0.21
9,240.0	89.30	88.60	6,516.7	-1,930.2	-339.1	2,513.9	2,532.6	1.99	-1.98	0.21
9,337.0	88.40	90.20	6,518.7	-1,932.2	-338.1	2,610.9	2,629.2	1.89	-0.93	1.65
9,432.0	88.90	90.00	6,520.9	-1,934.4	-338.3	2,705.9	2,723.9	0.57	0.53	-0.21
9,529.0	89.40	90.20	6,522.3	-1,935.8	-338.5	2,802.9	2,820.6	0.56	0.52	0.21
9,624.0	89.50	90.00	6,523.2	-1,936.7	-338.6	2,897.9	2,915.4	0.24	0.11	-0.21

# Survey Report



<b>Company:</b>	BONANZA CREEK ENERGY INC.	<b>Local Co-ordinate Reference:</b>	Well NORTH PLATTE 11-41-33HC
<b>Project:</b>	WELD COUNTY, COLORADO (NAD 83)	<b>TVD Reference:</b>	KB @ 4586.5usft (CADE 25)
<b>Site:</b>	NW NW SEC. 33 T5N R63W 6th P.M.	<b>MD Reference:</b>	KB @ 4586.5usft (CADE 25)
<b>Well:</b>	NORTH PLATTE 11-41-33HC	<b>North Reference:</b>	True
<b>Wellbore:</b>	JOB #: 2009-381	<b>Survey Calculation Method:</b>	Minimum Curvature
<b>Design:</b>	FINAL SURVEYS	<b>Database:</b>	EDM 5000.1 Single User Db

Survey										
Measured Depth (usft)	Inclination (°)	Azimuth (°)	Vertical Depth (usft)	Subsea Depth (usft)	+N/-S (usft)	+E/-W (usft)	Vertical Section (usft)	Dogleg Rate (°/100usft)	Build Rate (°/100usft)	Turn Rate (°/100usft)
9,721.0	91.40	90.00	6,522.5	-1,936.0	-338.6	2,994.8	3,012.1	1.96	1.96	0.00
9,817.0	90.40	89.30	6,521.0	-1,934.5	-338.0	3,090.8	3,107.7	1.27	-1.04	-0.73
9,912.0	91.30	89.70	6,519.6	-1,933.1	-337.2	3,185.8	3,202.4	1.04	0.95	0.42
10,007.0	90.30	89.50	6,518.2	-1,931.7	-336.5	3,280.8	3,297.0	1.07	-1.05	-0.21
10,103.0	89.50	89.30	6,518.4	-1,931.9	-335.5	3,376.8	3,392.6	0.86	-0.83	-0.21
10,198.0	89.00	90.90	6,519.7	-1,933.2	-335.7	3,471.8	3,487.4	1.76	-0.53	1.68
10,293.0	88.40	90.30	6,521.8	-1,935.3	-336.7	3,566.8	3,582.1	0.89	-0.63	-0.63
10,389.0	88.90	88.60	6,524.1	-1,937.6	-335.8	3,662.7	3,677.7	1.85	0.52	-1.77
10,483.0	89.50	89.30	6,525.4	-1,938.9	-334.1	3,756.7	3,771.3	0.98	0.64	0.74
10,579.0	90.00	89.30	6,525.8	-1,939.3	-332.9	3,852.7	3,866.9	0.52	0.52	0.00
10,674.0	89.70	87.40	6,526.0	-1,939.5	-330.1	3,947.6	3,961.4	2.02	-0.32	-2.00
10,770.0	89.50	86.30	6,526.7	-1,940.2	-324.9	4,043.5	4,056.5	1.16	-0.21	-1.15
10,865.0	88.70	84.60	6,528.2	-1,941.7	-317.3	4,138.2	4,150.3	1.98	-0.84	-1.79
10,959.0	89.60	83.80	6,529.6	-1,943.1	-307.8	4,231.7	4,242.8	1.28	0.96	-0.85
<b>LAST SURVEY - OCT 5, 2014</b>										
<b>11,044.0</b>	<b>90.80</b>	<b>84.00</b>	<b>6,529.3</b>	<b>-1,942.8</b>	<b>-298.8</b>	<b>4,316.2</b>	<b>4,326.4</b>	<b>1.43</b>	<b>1.41</b>	<b>0.24</b>
<b>EXTRAPOLATION TO TD</b>										
<b>11,110.0</b>	<b>90.80</b>	<b>84.00</b>	<b>6,528.4</b>	<b>-1,941.9</b>	<b>-291.9</b>	<b>4,381.8</b>	<b>4,391.3</b>	<b>0.00</b>	<b>0.00</b>	<b>0.00</b>

# Survey Report



<b>Company:</b>	BONANZA CREEK ENERGY INC.	<b>Local Co-ordinate Reference:</b>	Well NORTH PLATTE 11-41-33HC
<b>Project:</b>	WELD COUNTY, COLORADO (NAD 83)	<b>TVD Reference:</b>	KB @ 4586.5usft (CADE 25)
<b>Site:</b>	NW NW SEC. 33 T5N R63W 6th P.M.	<b>MD Reference:</b>	KB @ 4586.5usft (CADE 25)
<b>Well:</b>	NORTH PLATTE 11-41-33HC	<b>North Reference:</b>	True
<b>Wellbore:</b>	JOB #: 2009-381	<b>Survey Calculation Method:</b>	Minimum Curvature
<b>Design:</b>	FINAL SURVEYS	<b>Database:</b>	EDM 5000.1 Single User Db

Targets									
Target Name	Dip Angle	Dip Dir.	TVD	+N-S	+E-W	Northing	Easting	Latitude	Longitude
- hit/miss target	(°)	(°)	(usft)	(usft)	(usft)	(usft)	(usft)		
- Shape									
KOP - NORTH PLATT - survey misses target center by 9.6usft at 6047.1usft MD (6012.3 TVD, -331.2 N, -431.5 E) - Point	0.00	0.00	6,013.2	-330.9	-441.0	1,376,196.37	3,292,487.09	40.361309	-104.450391
EXIST VERT DOW 41 - survey misses target center by 902.4usft at 10921.2usft MD (6529.2 TVD, -311.8 N, 4194.1 E) - Circle (radius 30.0)	0.00	0.00	7,418.5	-464.8	4,196.4	1,376,117.39	3,297,125.61	40.360940	-104.433750
ICP *NEW* - NORTH - survey misses target center by 7.4usft at 6859.0usft MD (6509.9 TVD, -335.2 N, 133.6 E) - Point	0.00	0.00	6,516.5	-332.0	133.1	1,376,202.07	3,293,061.14	40.361306	-104.448331
EXIST VERT CORLIS - survey misses target center by 848.1usft at 8008.1usft MD (6524.4 TVD, -345.8 N, 1282.3 E) - Circle (radius 30.0)	0.00	0.00	7,358.5	-191.9	1,284.2	1,376,355.74	3,294,210.45	40.361690	-104.444200
BHL - NORTH PLATT - survey misses target center by 49.6usft at 11106.1usft MD (6528.4 TVD, -292.3 N, 4377.9 E) - Point	0.00	0.00	6,516.5	-340.2	4,382.8	1,376,244.22	3,297,310.52	40.361282	-104.433081
EXIST VERT CENTEI - survey misses target center by 2008.1usft at 6844.0usft MD (6507.6 TVD, -335.4 N, 118.8 E) - Circle (radius 30.0)	0.00	0.00	7,882.5	-1,794.9	10.6	1,374,737.83	3,292,956.03	40.357290	-104.448770
ICP *NEW* - NORTH - survey misses target center by 14.0usft at 6859.6usft MD (6510.0 TVD, -335.2 N, 134.2 E) - Point	0.00	0.00	6,523.5	-332.0	133.1	1,376,202.07	3,293,061.14	40.361306	-104.448331
BHL - NORTH PLATT - survey misses target center by 48.4usft at 11106.0usft MD (6528.4 TVD, -292.3 N, 4377.9 E) - Point	0.00	0.00	6,523.5	-340.2	4,382.8	1,376,244.22	3,297,310.52	40.361282	-104.433081
EXIST VERT PETER! - survey misses target center by 1763.4usft at 6895.0usft MD (6511.9 TVD, -334.7 N, 169.6 E) - Circle (radius 30.0)	0.00	0.00	7,345.5	1,217.9	105.3	1,377,751.46	3,293,015.05	40.365560	-104.448430
EXIST VERT CENTEI - survey misses target center by 1507.6usft at 9764.1usft MD (6521.6 TVD, -338.5 N, 3037.9 E) - Circle (radius 30.0)	0.00	0.00	7,453.5	-1,523.3	3,059.8	1,375,045.55	3,296,001.67	40.358035	-104.437829
KOP - NORTH PLATT - survey misses target center by 10.5usft at 6053.3usft MD (6018.4 TVD, -331.3 N, -430.7 E) - Point	0.00	0.00	6,020.2	-330.9	-441.0	1,376,196.37	3,292,487.09	40.361309	-104.450391

Survey Annotations				
Measured Depth (usft)	Vertical Depth (usft)	Local Coordinates		Comment
		+N-S (usft)	+E-W (usft)	
452.0	452.0	-0.2	1.2	SURFACE CASING
6,048.0	6,013.2	-331.2	-431.4	KOP
6,668.0	6,463.8	-337.1	-51.6	START TANGENT
6,835.0	6,505.9	-335.5	110.0	END TANGENT
6,922.0	6,511.5	-334.4	196.5	ICP
11,044.0	6,529.3	-298.8	4,316.2	LAST SURVEY - OCT 5, 2014
11,110.0	6,528.4	-291.9	4,381.8	EXTRAPOLATION TO TD

Checked By: _____	Approved By: _____	Date: _____
-------------------	--------------------	-------------