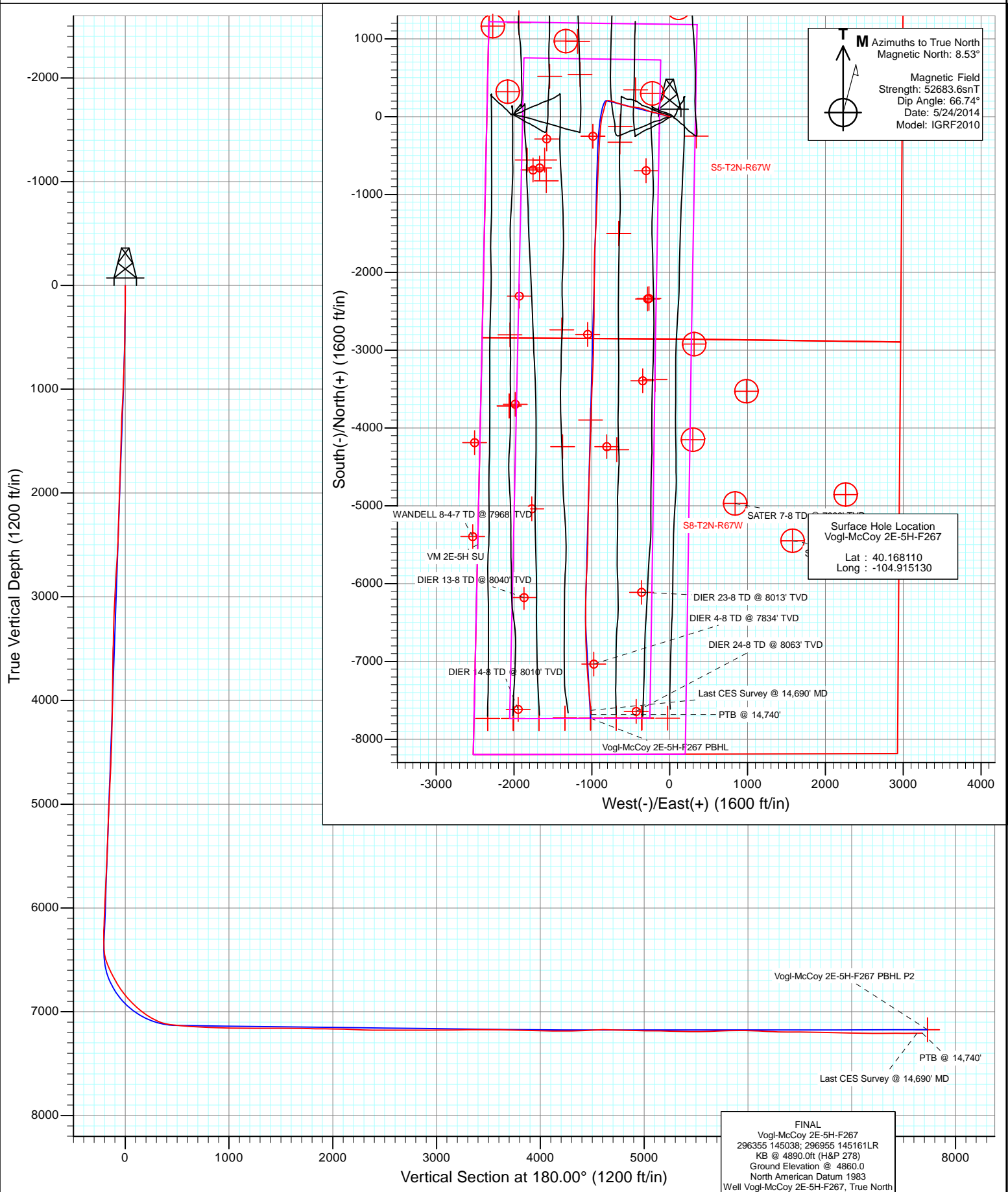


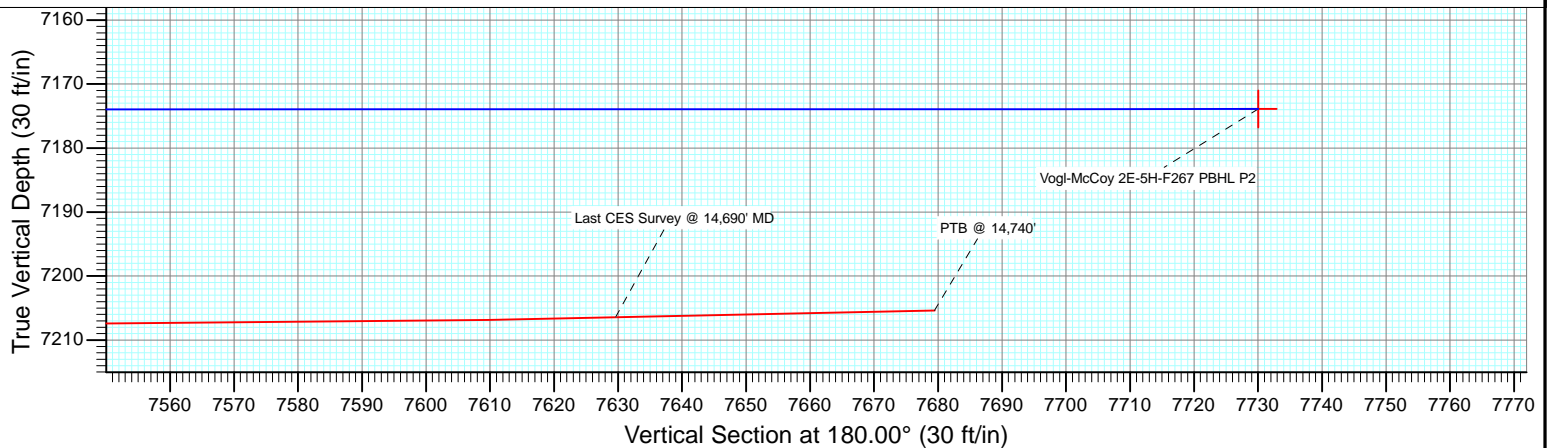
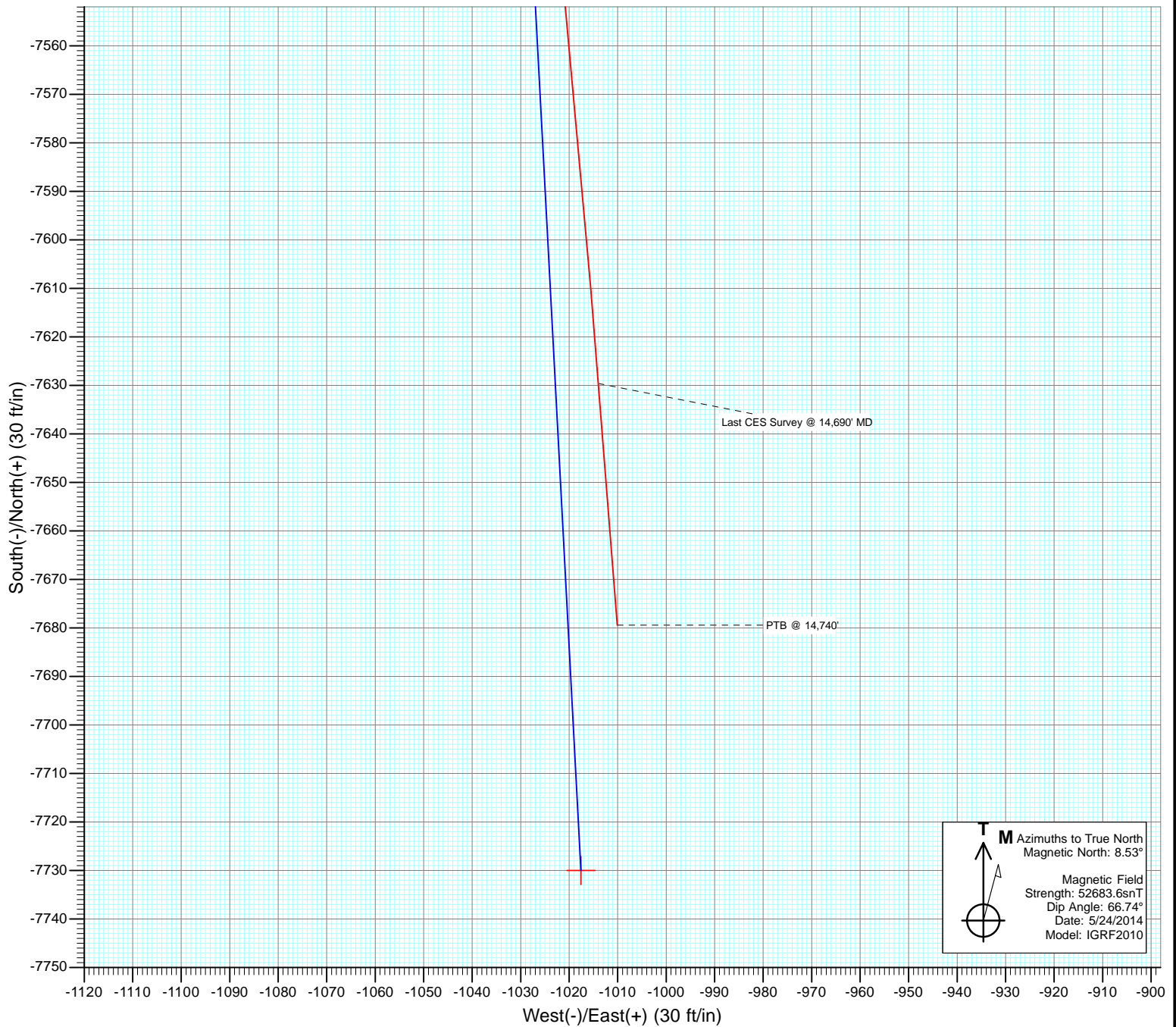


Project: DJ Wattenberg
Site: S5-T2N-R67W (Vogl-McCoy)
Well: Vogl-McCoy 2E-5H-F267
Wellbore: Hz
Design: FINAL





Project: DJ Wattenberg
Site: S5-T2N-R67W (Vogl-McCoy)
Well: Vogl-McCoy 2E-5H-F267
Wellbore: Hz
Design: FINAL



Cathedral Energy Services

Survey Report

| | | | |
|------------------|----------------------------|-------------------------------------|-----------------------------|
| Company: | EnCana Oil & Gas (USA) Inc | Local Co-ordinate Reference: | Well Vogl-McCoy 2E-5H-F267 |
| Project: | DJ Wattenberg | TVD Reference: | KB @ 4890.0ft (H&P 278) |
| Site: | S5-T2N-R67W (Vogl-McCoy) | MD Reference: | KB @ 4890.0ft (H&P 278) |
| Well: | Vogl-McCoy 2E-5H-F267 | North Reference: | True |
| Wellbore: | Hz | Survey Calculation Method: | Minimum Curvature |
| Design: | FINAL | Database: | USA EDM 5000 Multi Users DB |

| | | | |
|--------------------|---------------------------|----------------------|----------------|
| Project | DJ Wattenberg | | |
| Map System: | US State Plane 1983 | System Datum: | Mean Sea Level |
| Geo Datum: | North American Datum 1983 | | |
| Map Zone: | Colorado Northern Zone | | |

| Site | | S5-T2N-R67W (Vogl-McCoy) | | | |
|-----------------------|----------|--------------------------|-----------------|-------------------|-------------|
| Site Position: | | Northing: | 1,303,967.76 ft | Latitude: | 40.166330 |
| From: | Lat/Long | Easting: | 3,161,787.74 ft | Longitude: | -104.921110 |
| Position Uncertainty: | 0.0 ft | Slot Radius: | 13.200 in | Grid Convergence: | 0.37 ° |

| | | | | | | |
|----------------------|-----------------------|--------|---------------------|-----------------|---------------|-------------|
| Well | Vogl-McCoy 2E-5H-F267 | | | | | |
| Well Position | +N/-S | 0.0 ft | Northing: | 1,304,627.12 ft | Latitude: | 40.168110 |
| | +E/-W | 0.0 ft | Easting: | 3,163,454.66 ft | Longitude: | -104.915130 |
| Position Uncertainty | | 0.0 ft | Wellhead Elevation: | ft | Ground Level: | 4,860.0 ft |

| | | | | | |
|------------------|-------------------|--------------------|------------------------|----------------------|----------------------------|
| Wellbore | Hz | | | | |
| Magnetics | Model Name | Sample Date | Declination (°) | Dip Angle (°) | Field Strength (nT) |
| | IGRF2010 | 5/24/2014 | 8.53 | 66.74 | 52,684 |

| | | | | | |
|--------------------------|-------------------------|---------------|--------------|----------------------|-----|
| Design | FINAL | | | | |
| Audit Notes: | | | | | |
| Version: | 1.0 | Phase: | ACTUAL | Tie On Depth: | 0.0 |
| Vertical Section: | Depth From (TVD) | +N/-S | +E/-W | Direction | |
| | (ft) | (ft) | (ft) | (°) | |
| | 0.0 | 0.0 | 0.0 | 180.00 | |

| | | | | | |
|-----------------------|----------------|--------------------------|------------------|--------------------|--|
| Survey Program | Date | 6/4/2014 | | | |
| From (ft) | To (ft) | Survey (Wellbore) | Tool Name | Description | |
| 143.0 | 14,740.0 | Survey #1 (Hz) | Geolink MWD | Geolink MWD | |

| | | | | | | | | | | |
|----------------------------|------------------------|--------------------|----------------------------|-------------------|-------------------|------------------------------|------------------------------|-----------------------------|------------------------------|--|
| Survey | | | | | | | | | | |
| Measured Depth (ft) | Inclination (°) | Azimuth (°) | Vertical Depth (ft) | +N/-S (ft) | +E/-W (ft) | Vertical Section (ft) | Dogleg Rate (°/100ft) | Build Rate (°/100ft) | Formations / Comments | |
| 0.0 | 0.00 | 0.00 | 0.0 | 0.0 | 0.0 | 0.0 | 0.00 | 0.00 | | |
| 143.0 | 0.50 | 308.60 | 143.0 | 0.4 | -0.5 | -0.4 | 0.35 | 0.35 | | |
| 235.0 | 1.60 | 298.60 | 235.0 | 1.3 | -1.9 | -1.3 | 1.21 | 1.20 | | |
| 327.0 | 2.30 | 294.00 | 326.9 | 2.6 | -4.7 | -2.6 | 0.78 | 0.76 | | |
| 419.0 | 3.00 | 271.40 | 418.8 | 3.4 | -8.8 | -3.4 | 1.35 | 0.76 | | |
| 511.0 | 4.50 | 281.90 | 510.6 | 4.2 | -14.8 | -4.2 | 1.79 | 1.63 | | |
| 603.0 | 5.90 | 281.90 | 602.3 | 6.0 | -22.9 | -6.0 | 1.52 | 1.52 | | |
| 695.0 | 7.30 | 284.80 | 693.6 | 8.4 | -33.2 | -8.4 | 1.56 | 1.52 | | |
| 818.0 | 6.70 | 285.50 | 815.7 | 12.3 | -47.7 | -12.3 | 0.49 | -0.49 | | |
| 914.0 | 8.10 | 289.20 | 910.9 | 16.1 | -59.5 | -16.1 | 1.54 | 1.46 | | |
| 1,006.0 | 8.10 | 288.40 | 1,002.0 | 20.2 | -71.7 | -20.2 | 0.12 | 0.00 | | |
| 1,098.0 | 8.50 | 289.70 | 1,093.0 | 24.6 | -84.3 | -24.6 | 0.48 | 0.43 | | |
| 1,190.0 | 8.50 | 289.50 | 1,184.0 | 29.1 | -97.1 | -29.1 | 0.03 | 0.00 | | |

Cathedral Energy Services

Survey Report

| | | | |
|------------------|----------------------------|-------------------------------------|-----------------------------|
| Company: | EnCana Oil & Gas (USA) Inc | Local Co-ordinate Reference: | Well Vogl-McCoy 2E-5H-F267 |
| Project: | DJ Wattenberg | TVD Reference: | KB @ 4890.0ft (H&P 278) |
| Site: | S5-T2N-R67W (Vogl-McCoy) | MD Reference: | KB @ 4890.0ft (H&P 278) |
| Well: | Vogl-McCoy 2E-5H-F267 | North Reference: | True |
| Wellbore: | Hz | Survey Calculation Method: | Minimum Curvature |
| Design: | FINAL | Database: | USA EDM 5000 Multi Users DB |

Survey

| Measured Depth (ft) | Inclination (°) | Azimuth (°) | Vertical Depth (ft) | +N/-S (ft) | +E/-W (ft) | Vertical Section (ft) | Dogleg Rate (°/100ft) | Build Rate (°/100ft) | Formations / Comments |
|---------------------|-----------------|-------------|---------------------|------------|------------|-----------------------|-----------------------|----------------------|-----------------------|
| 1,282.0 | 8.40 | 287.50 | 1,275.0 | 33.4 | -109.9 | -33.4 | 0.34 | -0.11 | |
| 1,374.0 | 7.60 | 285.50 | 1,366.1 | 37.1 | -122.2 | -37.1 | 0.92 | -0.87 | |
| 1,466.0 | 7.30 | 276.90 | 1,457.4 | 39.4 | -133.9 | -39.4 | 1.25 | -0.33 | |
| 1,558.0 | 8.20 | 281.30 | 1,548.5 | 41.4 | -146.1 | -41.4 | 1.17 | 0.98 | |
| 1,649.0 | 8.70 | 278.60 | 1,638.5 | 43.7 | -159.3 | -43.7 | 0.70 | 0.55 | |
| 1,741.0 | 8.30 | 288.00 | 1,729.5 | 46.8 | -172.5 | -46.8 | 1.57 | -0.43 | |
| 1,833.0 | 8.00 | 286.90 | 1,820.6 | 50.7 | -184.9 | -50.7 | 0.37 | -0.33 | |
| 1,925.0 | 7.50 | 282.00 | 1,911.8 | 53.8 | -196.9 | -53.8 | 0.90 | -0.54 | |
| 2,017.0 | 7.60 | 277.80 | 2,003.0 | 55.9 | -208.8 | -55.9 | 0.61 | 0.11 | |
| 2,109.0 | 7.80 | 285.50 | 2,094.1 | 58.4 | -220.8 | -58.4 | 1.14 | 0.22 | |
| 2,201.0 | 7.50 | 284.50 | 2,185.3 | 61.5 | -232.7 | -61.5 | 0.36 | -0.33 | |
| 2,296.0 | 7.40 | 282.60 | 2,279.5 | 64.4 | -244.6 | -64.4 | 0.28 | -0.11 | |
| 2,391.0 | 7.30 | 281.60 | 2,373.7 | 67.0 | -256.5 | -67.0 | 0.17 | -0.11 | |
| 2,485.0 | 7.70 | 289.90 | 2,466.9 | 70.3 | -268.3 | -70.3 | 1.23 | 0.43 | |
| 2,580.0 | 7.90 | 291.70 | 2,561.1 | 74.9 | -280.3 | -74.9 | 0.33 | 0.21 | |
| 2,674.0 | 9.00 | 294.40 | 2,654.0 | 80.3 | -293.0 | -80.3 | 1.24 | 1.17 | |
| 2,768.0 | 8.80 | 292.40 | 2,746.9 | 86.1 | -306.4 | -86.1 | 0.39 | -0.21 | |
| 2,863.0 | 8.50 | 293.30 | 2,840.8 | 91.7 | -319.6 | -91.7 | 0.35 | -0.32 | |
| 2,957.0 | 8.40 | 290.70 | 2,933.8 | 96.8 | -332.4 | -96.8 | 0.42 | -0.11 | |
| 3,052.0 | 8.60 | 288.40 | 3,027.8 | 101.5 | -345.6 | -101.5 | 0.42 | 0.21 | |
| 3,146.0 | 9.00 | 289.10 | 3,120.6 | 106.1 | -359.2 | -106.1 | 0.44 | 0.43 | |
| 3,240.0 | 8.90 | 280.50 | 3,213.5 | 109.9 | -373.3 | -109.9 | 1.43 | -0.11 | |
| 3,335.0 | 8.50 | 283.50 | 3,307.4 | 112.9 | -387.4 | -112.9 | 0.64 | -0.42 | |
| 3,430.0 | 8.00 | 274.00 | 3,401.4 | 115.0 | -400.8 | -115.0 | 1.53 | -0.53 | |
| 3,524.0 | 5.90 | 286.80 | 3,494.7 | 116.8 | -411.9 | -116.8 | 2.76 | -2.23 | |
| 3,619.0 | 8.30 | 269.00 | 3,589.0 | 118.1 | -423.5 | -118.1 | 3.40 | 2.53 | |
| 3,713.0 | 8.20 | 283.60 | 3,682.1 | 119.6 | -436.8 | -119.6 | 2.23 | -0.11 | |
| 3,807.0 | 8.80 | 273.40 | 3,775.0 | 121.6 | -450.5 | -121.6 | 1.72 | 0.64 | |
| 3,902.0 | 8.60 | 273.50 | 3,868.9 | 122.4 | -464.8 | -122.4 | 0.21 | -0.21 | |
| 3,997.0 | 8.20 | 271.20 | 3,962.9 | 123.0 | -478.7 | -123.0 | 0.55 | -0.42 | |
| 4,091.0 | 7.60 | 278.10 | 4,056.0 | 124.0 | -491.5 | -124.0 | 1.19 | -0.64 | |
| 4,186.0 | 7.00 | 275.00 | 4,150.3 | 125.4 | -503.5 | -125.4 | 0.76 | -0.63 | |
| 4,280.0 | 7.30 | 281.40 | 4,243.5 | 127.1 | -515.1 | -127.1 | 0.90 | 0.32 | |
| 4,375.0 | 7.10 | 284.20 | 4,337.8 | 129.7 | -526.7 | -129.7 | 0.43 | -0.21 | |
| 4,470.0 | 6.40 | 287.30 | 4,432.1 | 132.7 | -537.4 | -132.7 | 0.83 | -0.74 | |
| 4,564.0 | 6.90 | 285.10 | 4,525.5 | 135.8 | -547.9 | -135.8 | 0.60 | 0.53 | |
| 4,659.0 | 7.50 | 290.40 | 4,619.7 | 139.4 | -559.2 | -139.4 | 0.94 | 0.63 | |
| 4,754.0 | 8.30 | 285.50 | 4,713.8 | 143.4 | -571.6 | -143.4 | 1.10 | 0.84 | |
| 4,848.0 | 8.80 | 287.80 | 4,806.8 | 147.4 | -585.0 | -147.4 | 0.64 | 0.53 | |
| 4,944.0 | 8.40 | 287.80 | 4,901.7 | 151.8 | -598.7 | -151.8 | 0.42 | -0.42 | |
| 5,039.0 | 7.80 | 288.30 | 4,995.8 | 155.9 | -611.4 | -155.9 | 0.64 | -0.63 | |
| 5,134.0 | 8.60 | 285.80 | 5,089.8 | 159.9 | -624.4 | -159.9 | 0.92 | 0.84 | |
| 5,229.0 | 7.80 | 288.50 | 5,183.8 | 163.9 | -637.3 | -163.9 | 0.93 | -0.84 | |
| 5,323.0 | 8.50 | 286.30 | 5,276.9 | 167.9 | -650.0 | -167.9 | 0.82 | 0.74 | |
| 5,418.0 | 8.00 | 287.70 | 5,370.9 | 171.8 | -663.1 | -171.8 | 0.57 | -0.53 | |
| 5,512.0 | 6.80 | 285.80 | 5,464.1 | 175.3 | -674.6 | -175.3 | 1.30 | -1.28 | |
| 5,607.0 | 6.70 | 282.80 | 5,558.4 | 178.1 | -685.5 | -178.1 | 0.39 | -0.11 | |
| 5,702.0 | 7.20 | 293.40 | 5,652.8 | 181.7 | -696.3 | -181.7 | 1.45 | 0.53 | |
| 5,797.0 | 7.50 | 293.00 | 5,747.0 | 186.5 | -707.5 | -186.5 | 0.32 | 0.32 | |
| 5,891.0 | 9.10 | 286.80 | 5,840.0 | 191.0 | -720.3 | -191.0 | 1.95 | 1.70 | |
| 5,986.0 | 8.00 | 287.70 | 5,933.9 | 195.2 | -733.8 | -195.2 | 1.17 | -1.16 | |
| 6,081.0 | 8.50 | 284.80 | 6,027.9 | 199.0 | -746.8 | -199.0 | 0.68 | 0.53 | |
| 6,176.0 | 9.30 | 284.90 | 6,121.8 | 202.8 | -761.0 | -202.8 | 0.84 | 0.84 | |

Cathedral Energy Services

Survey Report

| | | | |
|------------------|----------------------------|-------------------------------------|-----------------------------|
| Company: | EnCana Oil & Gas (USA) Inc | Local Co-ordinate Reference: | Well Vogl-McCoy 2E-5H-F267 |
| Project: | DJ Wattenberg | TVD Reference: | KB @ 4890.0ft (H&P 278) |
| Site: | S5-T2N-R67W (Vogl-McCoy) | MD Reference: | KB @ 4890.0ft (H&P 278) |
| Well: | Vogl-McCoy 2E-5H-F267 | North Reference: | True |
| Wellbore: | Hz | Survey Calculation Method: | Minimum Curvature |
| Design: | FINAL | Database: | USA EDM 5000 Multi Users DB |

Survey

| Measured Depth (ft) | Inclination (°) | Azimuth (°) | Vertical Depth (ft) | +N/-S (ft) | +E/-W (ft) | Vertical Section (ft) | Dogleg Rate (°/100ft) | Build Rate (°/100ft) | Formations / Comments |
|---------------------|-----------------|-------------|---------------------|------------|------------|-----------------------|-----------------------|----------------------|-----------------------|
| 6,270.0 | 7.80 | 284.60 | 6,214.8 | 206.3 | -774.6 | -206.3 | 1.60 | -1.60 | |
| 6,365.0 | 10.40 | 261.10 | 6,308.6 | 206.6 | -789.3 | -206.6 | 4.72 | 2.74 | |
| 6,460.0 | 8.70 | 257.30 | 6,402.3 | 203.7 | -804.8 | -203.7 | 1.91 | -1.79 | |
| 6,508.0 | 12.90 | 222.10 | 6,449.5 | 199.0 | -811.9 | -199.0 | 15.90 | 8.75 | |
| 6,555.0 | 18.50 | 204.60 | 6,494.7 | 188.3 | -818.5 | -188.3 | 15.48 | 11.91 | |
| 6,602.0 | 22.50 | 197.30 | 6,538.7 | 172.9 | -824.3 | -172.9 | 10.09 | 8.51 | |
| 6,649.0 | 25.30 | 194.20 | 6,581.7 | 154.6 | -829.5 | -154.6 | 6.53 | 5.96 | |
| 6,697.0 | 26.50 | 193.70 | 6,624.9 | 134.2 | -834.5 | -134.2 | 2.54 | 2.50 | |
| 6,744.0 | 28.70 | 194.40 | 6,666.5 | 113.1 | -839.8 | -113.1 | 4.73 | 4.68 | |
| 6,792.0 | 30.30 | 194.40 | 6,708.3 | 90.2 | -845.7 | -90.2 | 3.33 | 3.33 | |
| 6,839.0 | 32.50 | 194.60 | 6,748.4 | 66.5 | -851.8 | -66.5 | 4.69 | 4.68 | |
| 6,886.0 | 35.50 | 195.80 | 6,787.4 | 41.1 | -858.7 | -41.1 | 6.54 | 6.38 | |
| 6,933.0 | 38.90 | 194.10 | 6,824.8 | 13.7 | -866.0 | -13.7 | 7.56 | 7.23 | |
| 6,981.0 | 41.70 | 192.30 | 6,861.4 | -16.5 | -873.1 | 16.5 | 6.32 | 5.83 | |
| 7,028.0 | 44.40 | 188.80 | 6,895.8 | -48.1 | -878.9 | 48.1 | 7.67 | 5.74 | |
| 7,075.0 | 46.30 | 186.50 | 6,928.8 | -81.2 | -883.4 | 81.2 | 5.33 | 4.04 | |
| 7,122.0 | 48.60 | 185.80 | 6,960.6 | -115.6 | -887.1 | 115.6 | 5.02 | 4.89 | |
| 7,170.0 | 51.00 | 185.00 | 6,991.5 | -152.1 | -890.5 | 152.1 | 5.16 | 5.00 | |
| 7,217.0 | 54.10 | 183.90 | 7,020.1 | -189.3 | -893.4 | 189.3 | 6.85 | 6.60 | |
| 7,265.0 | 59.10 | 183.30 | 7,046.5 | -229.3 | -895.9 | 229.3 | 10.47 | 10.42 | |
| 7,312.0 | 62.40 | 184.30 | 7,069.5 | -270.2 | -898.6 | 270.2 | 7.26 | 7.02 | |
| 7,359.0 | 65.10 | 184.00 | 7,090.3 | -312.2 | -901.7 | 312.2 | 5.77 | 5.74 | |
| 7,406.0 | 72.80 | 183.00 | 7,107.2 | -356.0 | -904.4 | 356.0 | 16.50 | 16.38 | |
| 7,453.0 | 80.40 | 182.60 | 7,118.0 | -401.6 | -906.6 | 401.6 | 16.19 | 16.17 | |
| 7,501.0 | 82.60 | 182.60 | 7,125.1 | -449.0 | -908.7 | 449.0 | 4.58 | 4.58 | |
| 7,548.0 | 83.60 | 183.20 | 7,130.8 | -495.6 | -911.1 | 495.6 | 2.48 | 2.13 | |
| 7,595.0 | 85.00 | 183.30 | 7,135.5 | -542.3 | -913.8 | 542.3 | 2.99 | 2.98 | |
| 7,606.0 | 85.40 | 183.40 | 7,136.4 | -553.3 | -914.4 | 553.3 | 3.75 | 3.64 | |
| 7,668.0 | 86.30 | 183.50 | 7,140.9 | -615.0 | -918.1 | 615.0 | 1.46 | 1.45 | |
| 7,763.0 | 87.20 | 182.80 | 7,146.2 | -709.7 | -923.3 | 709.7 | 1.20 | 0.95 | |
| 7,857.0 | 87.60 | 181.90 | 7,150.5 | -803.5 | -927.2 | 803.5 | 1.05 | 0.43 | |
| 7,952.0 | 88.40 | 181.80 | 7,153.8 | -898.4 | -930.2 | 898.4 | 0.85 | 0.84 | |
| 8,047.0 | 89.10 | 181.40 | 7,155.9 | -993.4 | -932.9 | 993.4 | 0.85 | 0.74 | |
| 8,141.0 | 88.50 | 181.10 | 7,157.9 | -1,087.3 | -934.9 | 1,087.3 | 0.71 | -0.64 | |
| 8,235.0 | 89.40 | 181.70 | 7,159.6 | -1,181.3 | -937.2 | 1,181.3 | 1.15 | 0.96 | |
| 8,330.0 | 90.40 | 182.90 | 7,159.8 | -1,276.2 | -941.1 | 1,276.2 | 1.64 | 1.05 | |
| 8,425.0 | 90.40 | 182.90 | 7,159.1 | -1,371.1 | -945.9 | 1,371.1 | 0.00 | 0.00 | |
| 8,517.0 | 90.40 | 182.90 | 7,158.4 | -1,462.9 | -950.5 | 1,462.9 | 0.00 | 0.00 | |
| 8,608.0 | 89.70 | 182.90 | 7,158.4 | -1,553.8 | -955.1 | 1,553.8 | 0.77 | -0.77 | |
| 8,701.0 | 88.40 | 183.00 | 7,159.9 | -1,646.7 | -959.9 | 1,646.7 | 1.40 | -1.40 | |
| 8,793.0 | 89.10 | 182.20 | 7,161.9 | -1,738.6 | -964.1 | 1,738.6 | 1.16 | 0.76 | |
| 8,885.0 | 89.30 | 181.20 | 7,163.2 | -1,830.5 | -966.8 | 1,830.5 | 1.11 | 0.22 | |
| 8,977.0 | 89.50 | 181.30 | 7,164.2 | -1,922.5 | -968.8 | 1,922.5 | 0.24 | 0.22 | |
| 9,069.0 | 88.70 | 180.10 | 7,165.6 | -2,014.5 | -969.9 | 2,014.5 | 1.57 | -0.87 | |
| 9,161.0 | 88.40 | 180.40 | 7,167.9 | -2,106.4 | -970.3 | 2,106.4 | 0.46 | -0.33 | |
| 9,253.0 | 87.70 | 180.50 | 7,171.1 | -2,198.4 | -971.1 | 2,198.4 | 0.77 | -0.76 | |
| 9,345.0 | 88.00 | 180.40 | 7,174.5 | -2,290.3 | -971.8 | 2,290.3 | 0.34 | 0.33 | |
| 9,437.0 | 89.10 | 180.20 | 7,176.8 | -2,382.3 | -972.3 | 2,382.3 | 1.22 | 1.20 | |
| 9,529.0 | 90.50 | 180.30 | 7,177.2 | -2,474.3 | -972.7 | 2,474.3 | 1.53 | 1.52 | |
| 9,620.0 | 89.50 | 180.10 | 7,177.2 | -2,565.3 | -973.0 | 2,565.3 | 1.12 | -1.10 | |
| 9,712.0 | 90.20 | 181.40 | 7,177.4 | -2,657.3 | -974.2 | 2,657.3 | 1.60 | 0.76 | |
| 9,804.0 | 90.40 | 180.80 | 7,176.9 | -2,749.3 | -976.0 | 2,749.3 | 0.69 | 0.22 | |
| 9,896.0 | 89.70 | 180.80 | 7,176.8 | -2,841.2 | -977.2 | 2,841.2 | 0.76 | -0.76 | |

Cathedral Energy Services

Survey Report

| | | | |
|------------------|----------------------------|-------------------------------------|-----------------------------|
| Company: | EnCana Oil & Gas (USA) Inc | Local Co-ordinate Reference: | Well Vogl-McCoy 2E-5H-F267 |
| Project: | DJ Wattenberg | TVD Reference: | KB @ 4890.0ft (H&P 278) |
| Site: | S5-T2N-R67W (Vogl-McCoy) | MD Reference: | KB @ 4890.0ft (H&P 278) |
| Well: | Vogl-McCoy 2E-5H-F267 | North Reference: | True |
| Wellbore: | Hz | Survey Calculation Method: | Minimum Curvature |
| Design: | FINAL | Database: | USA EDM 5000 Multi Users DB |

Survey

| Measured Depth (ft) | Inclination (°) | Azimuth (°) | Vertical Depth (ft) | +N/-S (ft) | +E/-W (ft) | Vertical Section (ft) | Dogleg Rate (°/100ft) | Build Rate (°/100ft) | Formations / Comments |
|---------------------|-----------------|-------------|---------------------|------------|------------|-----------------------|-----------------------|----------------------|------------------------------|
| 9,988.0 | 90.30 | 180.70 | 7,176.8 | -2,933.2 | -978.4 | 2,933.2 | 0.66 | 0.65 | |
| 10,080.0 | 90.50 | 181.40 | 7,176.2 | -3,025.2 | -980.1 | 3,025.2 | 0.79 | 0.22 | |
| 10,171.0 | 90.50 | 181.40 | 7,175.4 | -3,116.2 | -982.4 | 3,116.2 | 0.00 | 0.00 | |
| 10,263.0 | 91.10 | 182.80 | 7,174.1 | -3,208.1 | -985.7 | 3,208.1 | 1.66 | 0.65 | |
| 10,355.0 | 90.30 | 182.10 | 7,173.0 | -3,300.0 | -989.7 | 3,300.0 | 1.16 | -0.87 | |
| 10,447.0 | 89.80 | 182.70 | 7,172.9 | -3,391.9 | -993.5 | 3,391.9 | 0.85 | -0.54 | |
| 10,539.0 | 89.80 | 182.80 | 7,173.2 | -3,483.8 | -997.9 | 3,483.8 | 0.11 | 0.00 | |
| 10,630.0 | 89.60 | 182.40 | 7,173.7 | -3,574.7 | -1,002.1 | 3,574.7 | 0.49 | -0.22 | |
| 10,722.0 | 89.10 | 181.60 | 7,174.8 | -3,666.7 | -1,005.3 | 3,666.7 | 1.03 | -0.54 | |
| 10,814.0 | 88.60 | 181.90 | 7,176.6 | -3,758.6 | -1,008.1 | 3,758.6 | 0.63 | -0.54 | |
| 10,905.0 | 88.60 | 181.80 | 7,178.8 | -3,849.5 | -1,011.0 | 3,849.5 | 0.11 | 0.00 | |
| 10,997.0 | 88.60 | 181.80 | 7,181.1 | -3,941.5 | -1,013.9 | 3,941.5 | 0.00 | 0.00 | |
| 11,087.0 | 88.90 | 182.00 | 7,183.0 | -4,031.4 | -1,016.9 | 4,031.4 | 0.40 | 0.33 | |
| 11,179.0 | 89.00 | 181.60 | 7,184.7 | -4,123.4 | -1,019.8 | 4,123.4 | 0.45 | 0.11 | |
| 11,272.0 | 89.30 | 180.50 | 7,186.1 | -4,216.3 | -1,021.5 | 4,216.3 | 1.23 | 0.32 | |
| 11,363.0 | 91.60 | 181.80 | 7,185.4 | -4,307.3 | -1,023.3 | 4,307.3 | 2.90 | 2.53 | |
| 11,455.0 | 93.10 | 182.50 | 7,181.6 | -4,399.2 | -1,026.7 | 4,399.2 | 1.80 | 1.63 | |
| 11,549.0 | 93.10 | 181.90 | 7,176.5 | -4,493.0 | -1,030.4 | 4,493.0 | 0.64 | 0.00 | |
| 11,644.0 | 91.40 | 182.50 | 7,172.8 | -4,587.8 | -1,034.0 | 4,587.8 | 1.90 | -1.79 | |
| 11,738.0 | 87.60 | 181.10 | 7,173.6 | -4,681.7 | -1,036.9 | 4,681.7 | 4.31 | -4.04 | |
| 11,833.0 | 87.70 | 181.30 | 7,177.5 | -4,776.6 | -1,038.9 | 4,776.6 | 0.24 | 0.11 | |
| 11,928.0 | 88.80 | 181.80 | 7,180.4 | -4,871.5 | -1,041.5 | 4,871.5 | 1.27 | 1.16 | |
| 12,023.0 | 89.10 | 181.60 | 7,182.2 | -4,966.5 | -1,044.3 | 4,966.5 | 0.38 | 0.32 | |
| 12,117.0 | 89.90 | 181.10 | 7,183.0 | -5,060.4 | -1,046.5 | 5,060.4 | 1.00 | 0.85 | |
| 12,212.0 | 88.80 | 181.10 | 7,184.1 | -5,155.4 | -1,048.4 | 5,155.4 | 1.16 | -1.16 | |
| 12,307.0 | 88.70 | 180.90 | 7,186.1 | -5,250.4 | -1,050.0 | 5,250.4 | 0.24 | -0.11 | |
| 12,402.0 | 88.00 | 180.70 | 7,188.9 | -5,345.3 | -1,051.3 | 5,345.3 | 0.77 | -0.74 | |
| 12,497.0 | 89.40 | 180.60 | 7,191.0 | -5,440.3 | -1,052.4 | 5,440.3 | 1.48 | 1.47 | |
| 12,592.0 | 90.30 | 181.80 | 7,191.3 | -5,535.3 | -1,054.4 | 5,535.3 | 1.58 | 0.95 | |
| 12,686.0 | 92.10 | 181.00 | 7,189.3 | -5,629.2 | -1,056.7 | 5,629.2 | 2.10 | 1.91 | |
| 12,781.0 | 92.40 | 182.80 | 7,185.6 | -5,724.1 | -1,059.9 | 5,724.1 | 1.92 | 0.32 | |
| 12,875.0 | 91.80 | 183.90 | 7,182.1 | -5,817.9 | -1,065.3 | 5,817.9 | 1.33 | -0.64 | |
| 12,970.0 | 90.30 | 182.60 | 7,180.4 | -5,912.7 | -1,070.7 | 5,912.7 | 2.09 | -1.58 | |
| 13,064.0 | 88.00 | 181.90 | 7,181.8 | -6,006.6 | -1,074.4 | 6,006.6 | 2.56 | -2.45 | |
| 13,159.0 | 87.70 | 181.10 | 7,185.4 | -6,101.5 | -1,076.9 | 6,101.5 | 0.90 | -0.32 | |
| 13,253.0 | 87.10 | 181.20 | 7,189.6 | -6,195.4 | -1,078.8 | 6,195.4 | 0.65 | -0.64 | |
| 13,347.0 | 88.40 | 180.70 | 7,193.3 | -6,289.3 | -1,080.3 | 6,289.3 | 1.48 | 1.38 | |
| 13,442.0 | 89.20 | 179.70 | 7,195.3 | -6,384.3 | -1,080.7 | 6,384.3 | 1.35 | 0.84 | |
| 13,536.0 | 89.40 | 179.60 | 7,196.4 | -6,478.3 | -1,080.1 | 6,478.3 | 0.24 | 0.21 | |
| 13,631.0 | 90.00 | 179.50 | 7,196.9 | -6,573.3 | -1,079.4 | 6,573.3 | 0.64 | 0.63 | |
| 13,725.0 | 89.70 | 179.20 | 7,197.2 | -6,667.3 | -1,078.3 | 6,667.3 | 0.45 | -0.32 | |
| 13,819.0 | 88.70 | 179.90 | 7,198.5 | -6,761.2 | -1,077.6 | 6,761.2 | 1.30 | -1.06 | |
| 13,914.0 | 87.70 | 176.80 | 7,201.5 | -6,856.1 | -1,074.8 | 6,856.1 | 3.43 | -1.05 | |
| 14,009.0 | 88.90 | 176.00 | 7,204.3 | -6,950.9 | -1,068.9 | 6,950.9 | 1.52 | 1.26 | |
| 14,103.0 | 88.60 | 176.20 | 7,206.4 | -7,044.7 | -1,062.5 | 7,044.7 | 0.38 | -0.32 | |
| 14,198.0 | 89.40 | 175.90 | 7,208.0 | -7,139.5 | -1,055.9 | 7,139.5 | 0.90 | 0.84 | |
| 14,292.0 | 90.20 | 175.70 | 7,208.3 | -7,233.2 | -1,049.0 | 7,233.2 | 0.88 | 0.85 | |
| 14,387.0 | 90.60 | 175.60 | 7,207.7 | -7,327.9 | -1,041.8 | 7,327.9 | 0.43 | 0.42 | |
| 14,481.0 | 89.80 | 174.20 | 7,207.4 | -7,421.6 | -1,033.5 | 7,421.6 | 1.72 | -0.85 | |
| 14,576.0 | 89.80 | 174.40 | 7,207.7 | -7,516.1 | -1,024.0 | 7,516.1 | 0.21 | 0.00 | |
| 14,670.0 | 91.20 | 175.30 | 7,206.9 | -7,609.7 | -1,015.6 | 7,609.7 | 1.77 | 1.49 | |
| 14,690.0 | 91.20 | 175.50 | 7,206.4 | -7,629.6 | -1,014.0 | 7,629.6 | 1.00 | 0.00 | Last CES Survey @ 14,690' MD |
| 14,740.0 | 91.20 | 175.50 | 7,205.4 | -7,679.4 | -1,010.1 | 7,679.4 | 0.00 | 0.00 | PTB @ 14,740' |

Cathedral Energy Services

Survey Report

| | | | |
|------------------|----------------------------|-------------------------------------|-----------------------------|
| Company: | EnCana Oil & Gas (USA) Inc | Local Co-ordinate Reference: | Well Vogl-McCoy 2E-5H-F267 |
| Project: | DJ Wattenberg | TVD Reference: | KB @ 4890.0ft (H&P 278) |
| Site: | S5-T2N-R67W (Vogl-McCoy) | MD Reference: | KB @ 4890.0ft (H&P 278) |
| Well: | Vogl-McCoy 2E-5H-F267 | North Reference: | True |
| Wellbore: | Hz | Survey Calculation Method: | Minimum Curvature |
| Design: | FINAL | Database: | USA EDM 5000 Multi Users DB |

Survey

| Measured Depth (ft) | Inclination (°) | Azimuth (°) | Vertical Depth (ft) | +N/-S (ft) | +E/-W (ft) | Vertical Section (ft) | Dogleg Rate (°/100ft) | Build Rate (°/100ft) | Formations / Comments |
|---------------------|-----------------|-------------|---------------------|------------|------------|-----------------------|-----------------------|----------------------|-----------------------|
|---------------------|-----------------|-------------|---------------------|------------|------------|-----------------------|-----------------------|----------------------|-----------------------|

Targets

| Target Name - hit/miss target - Shape | Dip Angle (°) | Dip Dir. (°) | TVD (ft) | +N/-S (ft) | +E/-W (ft) | Northing (ft) | Easting (ft) | Latitude | Longitude |
|---|---------------|--------------|----------|------------|------------|---------------|--------------|-----------|-------------|
| Vogl-McCoy 2E-5H-F26; - actual wellpath misses target center by 91.1ft at 14740.0ft MD (7205.4 TVD, -7679.4 N, -1010.1 E) - Point | 0.00 | 0.00 | 7,130.0 | -7,730.0 | -1,017.6 | 1,296,890.56 | 3,162,488.10 | 40.146890 | -104.918770 |
| Vogl-McCoy 2E-5H-F26; - actual wellpath misses target center by 7.9ft at 10952.4ft MD (7180.0 TVD, -3896.9 N, -1012.5 E) - Point | 0.00 | 0.00 | 7,173.9 | -3,896.9 | -1,017.6 | 1,300,723.61 | 3,162,462.79 | 40.157412 | -104.918771 |
| Vogl-McCoy 2E-5H-F26; - actual wellpath misses target center by 60.1ft at 14740.0ft MD (7205.4 TVD, -7679.4 N, -1010.1 E) - Point | 0.00 | 0.00 | 7,173.9 | -7,730.0 | -1,017.6 | 1,296,890.56 | 3,162,488.10 | 40.146890 | -104.918770 |

Design Annotations

| Measured Depth (ft) | Vertical Depth (ft) | Local Coordinates | | Comment |
|---------------------|---------------------|-------------------|------------|------------------------------|
| | | +N/-S (ft) | +E/-W (ft) | |
| 14,690.0 | 7,206.4 | -7,629.6 | -1,014.0 | Last CES Survey @ 14,690' MD |
| 14,740.0 | 7,205.4 | -7,679.4 | -1,010.1 | PTB @ 14,740' |

Checked By: _____ Approved By: _____ Date: _____

EnCana Oil & Gas (USA) Inc

DJ Wattenberg

S5-T2N-R67W (Vogl-McCoy)

Vogl-McCoy 2E-5H-F267

Hz

Design: FINAL

Survey Report - Geographic

04 June, 2014

Cathedral Energy Services

Survey Report - Geographic

| | | | |
|------------------|----------------------------|-------------------------------------|-----------------------------|
| Company: | EnCana Oil & Gas (USA) Inc | Local Co-ordinate Reference: | Well Vogl-McCoy 2E-5H-F267 |
| Project: | DJ Wattenberg | TVD Reference: | KB @ 4890.0ft (H&P 278) |
| Site: | S5-T2N-R67W (Vogl-McCoy) | MD Reference: | KB @ 4890.0ft (H&P 278) |
| Well: | Vogl-McCoy 2E-5H-F267 | North Reference: | True |
| Wellbore: | Hz | Survey Calculation Method: | Minimum Curvature |
| Design: | FINAL | Database: | USA EDM 5000 Multi Users DB |

| | | | |
|--------------------|---------------------------|----------------------|----------------|
| Project | DJ Wattenberg | | |
| Map System: | US State Plane 1983 | System Datum: | Mean Sea Level |
| Geo Datum: | North American Datum 1983 | | |
| Map Zone: | Colorado Northern Zone | | |

| | | | | | |
|-----------------------|--------------------------|--------------|-----------------|-------------------|-------------|
| Site | S5-T2N-R67W (Vogl-McCoy) | | | | |
| Site Position: | | Northing: | 1,303,967.76 ft | Latitude: | 40.166330 |
| From: | Lat/Long | Easting: | 3,161,787.74 ft | Longitude: | -104.921110 |
| Position Uncertainty: | 0.0 ft | Slot Radius: | 13.200 in | Grid Convergence: | 0.37 ° |

| | | | | | | |
|----------------------|-----------------------|--------|---------------------|-----------------|---------------|-------------|
| Well | Vogl-McCoy 2E-5H-F267 | | | | | |
| Well Position | +N/-S | 0.0 ft | Northing: | 1,304,627.12 ft | Latitude: | 40.168110 |
| | +E/-W | 0.0 ft | Easting: | 3,163,454.66 ft | Longitude: | -104.915130 |
| Position Uncertainty | | 0.0 ft | Wellhead Elevation: | ft | Ground Level: | 4,860.0 ft |

| | | | | | |
|------------------|-------------------|--------------------|------------------------|----------------------|----------------------------|
| Wellbore | Hz | | | | |
| Magnetics | Model Name | Sample Date | Declination (°) | Dip Angle (°) | Field Strength (nT) |
| | IGRF2010 | 5/24/2014 | 8.53 | 66.74 | 52,684 |

| | | | | | |
|--------------------------|------------------------------|-------------------|-------------------|----------------------|-----|
| Design | FINAL | | | | |
| Audit Notes: | | | | | |
| Version: | 1.0 | Phase: | ACTUAL | Tie On Depth: | 0.0 |
| Vertical Section: | Depth From (TVD) (ft) | +N/-S (ft) | +E/-W (ft) | Direction (°) | |
| | 0.0 | 0.0 | 0.0 | 180.00 | |

| | | | | | |
|-----------------------|----------------|--------------------------|------------------|--------------------|--|
| Survey Program | Date | 6/4/2014 | | | |
| From (ft) | To (ft) | Survey (Wellbore) | Tool Name | Description | |
| 143.0 | 14,740.0 | Survey #1 (Hz) | Geolink MWD | Geolink MWD | |

| | | | | | | | | | | |
|----------------------------|------------------------|--------------------|----------------------------|-------------------|-------------------|--------------------------|-------------------------|-----------------|------------------|--|
| Survey | | | | | | | | | | |
| Measured Depth (ft) | Inclination (°) | Azimuth (°) | Vertical Depth (ft) | +N/-S (ft) | +E/-W (ft) | Map Northing (ft) | Map Easting (ft) | Latitude | Longitude | |
| 0.0 | 0.00 | 0.00 | 0.0 | 0.0 | 0.0 | 1,304,627.12 | 3,163,454.66 | 40.168110 | -104.915130 | |
| 143.0 | 0.50 | 308.60 | 143.0 | 0.4 | -0.5 | 1,304,627.50 | 3,163,454.17 | 40.168111 | -104.915132 | |
| 235.0 | 1.60 | 298.60 | 235.0 | 1.3 | -1.9 | 1,304,628.36 | 3,163,452.73 | 40.168113 | -104.915137 | |
| 327.0 | 2.30 | 294.00 | 326.9 | 2.6 | -4.7 | 1,304,629.71 | 3,163,449.90 | 40.168117 | -104.915147 | |
| 419.0 | 3.00 | 271.40 | 418.8 | 3.4 | -8.8 | 1,304,630.49 | 3,163,445.80 | 40.168119 | -104.915162 | |
| 511.0 | 4.50 | 281.90 | 510.6 | 4.2 | -14.8 | 1,304,631.25 | 3,163,439.86 | 40.168122 | -104.915183 | |
| 603.0 | 5.90 | 281.90 | 602.3 | 6.0 | -22.9 | 1,304,632.92 | 3,163,431.69 | 40.168126 | -104.915212 | |
| 695.0 | 7.30 | 284.80 | 693.6 | 8.4 | -33.2 | 1,304,635.32 | 3,163,421.40 | 40.168133 | -104.915249 | |
| 818.0 | 6.70 | 285.50 | 815.7 | 12.3 | -47.7 | 1,304,639.14 | 3,163,406.90 | 40.168144 | -104.915301 | |
| 914.0 | 8.10 | 289.20 | 910.9 | 16.1 | -59.5 | 1,304,642.78 | 3,163,395.09 | 40.168154 | -104.915343 | |
| 1,006.0 | 8.10 | 288.40 | 1,002.0 | 20.2 | -71.7 | 1,304,646.88 | 3,163,382.79 | 40.168166 | -104.915387 | |
| 1,098.0 | 8.50 | 289.70 | 1,093.0 | 24.6 | -84.3 | 1,304,651.13 | 3,163,370.21 | 40.168177 | -104.915432 | |

Cathedral Energy Services

Survey Report - Geographic

| | | | |
|------------------|----------------------------|-------------------------------------|-----------------------------|
| Company: | EnCana Oil & Gas (USA) Inc | Local Co-ordinate Reference: | Well Vogl-McCoy 2E-5H-F267 |
| Project: | DJ Wattenberg | TVD Reference: | KB @ 4890.0ft (H&P 278) |
| Site: | S5-T2N-R67W (Vogl-McCoy) | MD Reference: | KB @ 4890.0ft (H&P 278) |
| Well: | Vogl-McCoy 2E-5H-F267 | North Reference: | True |
| Wellbore: | Hz | Survey Calculation Method: | Minimum Curvature |
| Design: | FINAL | Database: | USA EDM 5000 Multi Users DB |

| Survey | | | | | | | | | |
|---------------------|-----------------|-------------|---------------------|------------|------------|-------------------|------------------|-----------|-------------|
| Measured Depth (ft) | Inclination (°) | Azimuth (°) | Vertical Depth (ft) | +N/-S (ft) | +E/-W (ft) | Map Northing (ft) | Map Easting (ft) | Latitude | Longitude |
| 1,190.0 | 8.50 | 289.50 | 1,184.0 | 29.1 | -97.1 | 1,304,655.61 | 3,163,357.37 | 40.168190 | -104.915478 |
| 1,282.0 | 8.40 | 287.50 | 1,275.0 | 33.4 | -109.9 | 1,304,659.82 | 3,163,344.53 | 40.168202 | -104.915524 |
| 1,374.0 | 7.60 | 285.50 | 1,366.1 | 37.1 | -122.2 | 1,304,663.38 | 3,163,332.23 | 40.168212 | -104.915567 |
| 1,466.0 | 7.30 | 276.90 | 1,457.4 | 39.4 | -133.9 | 1,304,665.63 | 3,163,320.55 | 40.168218 | -104.915609 |
| 1,558.0 | 8.20 | 281.30 | 1,548.5 | 41.4 | -146.1 | 1,304,667.54 | 3,163,308.30 | 40.168224 | -104.915653 |
| 1,649.0 | 8.70 | 278.60 | 1,638.5 | 43.7 | -159.3 | 1,304,669.75 | 3,163,295.12 | 40.168230 | -104.915700 |
| 1,741.0 | 8.30 | 288.00 | 1,729.5 | 46.8 | -172.5 | 1,304,672.76 | 3,163,281.90 | 40.168238 | -104.915747 |
| 1,833.0 | 8.00 | 286.90 | 1,820.6 | 50.7 | -184.9 | 1,304,676.59 | 3,163,269.44 | 40.168249 | -104.915792 |
| 1,925.0 | 7.50 | 282.00 | 1,911.8 | 53.8 | -196.9 | 1,304,679.62 | 3,163,257.42 | 40.168258 | -104.915835 |
| 2,017.0 | 7.60 | 277.80 | 2,003.0 | 55.9 | -208.8 | 1,304,681.62 | 3,163,245.50 | 40.168263 | -104.915877 |
| 2,109.0 | 7.80 | 285.50 | 2,094.1 | 58.4 | -220.8 | 1,304,684.03 | 3,163,233.44 | 40.168270 | -104.915920 |
| 2,201.0 | 7.50 | 284.50 | 2,185.3 | 61.5 | -232.7 | 1,304,687.12 | 3,163,221.59 | 40.168279 | -104.915963 |
| 2,296.0 | 7.40 | 282.60 | 2,279.5 | 64.4 | -244.6 | 1,304,689.93 | 3,163,209.60 | 40.168287 | -104.916006 |
| 2,391.0 | 7.30 | 281.60 | 2,373.7 | 67.0 | -256.5 | 1,304,692.40 | 3,163,197.70 | 40.168294 | -104.916048 |
| 2,485.0 | 7.70 | 289.90 | 2,466.9 | 70.3 | -268.3 | 1,304,695.67 | 3,163,185.91 | 40.168303 | -104.916090 |
| 2,580.0 | 7.90 | 291.70 | 2,561.1 | 74.9 | -280.3 | 1,304,700.17 | 3,163,173.83 | 40.168316 | -104.916133 |
| 2,674.0 | 9.00 | 294.40 | 2,654.0 | 80.3 | -293.0 | 1,304,705.51 | 3,163,161.10 | 40.168331 | -104.916179 |
| 2,768.0 | 8.80 | 292.40 | 2,746.9 | 86.1 | -306.4 | 1,304,711.20 | 3,163,147.71 | 40.168346 | -104.916227 |
| 2,863.0 | 8.50 | 293.30 | 2,840.8 | 91.7 | -319.6 | 1,304,716.66 | 3,163,134.51 | 40.168362 | -104.916274 |
| 2,957.0 | 8.40 | 290.70 | 2,933.8 | 96.8 | -332.4 | 1,304,721.75 | 3,163,121.67 | 40.168376 | -104.916320 |
| 3,052.0 | 8.60 | 288.40 | 3,027.8 | 101.5 | -345.6 | 1,304,726.36 | 3,163,108.41 | 40.168389 | -104.916367 |
| 3,146.0 | 9.00 | 289.10 | 3,120.6 | 106.1 | -359.2 | 1,304,730.89 | 3,163,094.77 | 40.168401 | -104.916416 |
| 3,240.0 | 8.90 | 280.50 | 3,213.5 | 109.9 | -373.3 | 1,304,734.53 | 3,163,080.64 | 40.168412 | -104.916466 |
| 3,335.0 | 8.50 | 283.50 | 3,307.4 | 112.9 | -387.4 | 1,304,737.41 | 3,163,066.57 | 40.168420 | -104.916516 |
| 3,430.0 | 8.00 | 274.00 | 3,401.4 | 115.0 | -400.8 | 1,304,739.43 | 3,163,053.14 | 40.168426 | -104.916564 |
| 3,524.0 | 5.90 | 286.80 | 3,494.7 | 116.8 | -411.9 | 1,304,741.21 | 3,163,041.97 | 40.168431 | -104.916604 |
| 3,619.0 | 8.30 | 269.00 | 3,589.0 | 118.1 | -423.5 | 1,304,742.42 | 3,163,030.43 | 40.168434 | -104.916646 |
| 3,713.0 | 8.20 | 283.60 | 3,682.1 | 119.6 | -436.8 | 1,304,743.79 | 3,163,017.12 | 40.168438 | -104.916693 |
| 3,807.0 | 8.80 | 273.40 | 3,775.0 | 121.6 | -450.5 | 1,304,745.70 | 3,163,003.41 | 40.168444 | -104.916742 |
| 3,902.0 | 8.60 | 273.50 | 3,868.9 | 122.4 | -464.8 | 1,304,746.47 | 3,162,989.06 | 40.168446 | -104.916793 |
| 3,997.0 | 8.20 | 271.20 | 3,962.9 | 123.0 | -478.7 | 1,304,746.96 | 3,162,975.20 | 40.168448 | -104.916843 |
| 4,091.0 | 7.60 | 278.10 | 4,056.0 | 124.0 | -491.5 | 1,304,747.89 | 3,162,962.33 | 40.168450 | -104.916889 |
| 4,186.0 | 7.00 | 275.00 | 4,150.3 | 125.4 | -503.5 | 1,304,749.20 | 3,162,950.34 | 40.168454 | -104.916932 |
| 4,280.0 | 7.30 | 281.40 | 4,243.5 | 127.1 | -515.1 | 1,304,750.80 | 3,162,938.77 | 40.168459 | -104.916973 |
| 4,375.0 | 7.10 | 284.20 | 4,337.8 | 129.7 | -526.7 | 1,304,753.36 | 3,162,927.14 | 40.168466 | -104.917015 |
| 4,470.0 | 6.40 | 287.30 | 4,432.1 | 132.7 | -537.4 | 1,304,756.30 | 3,162,916.37 | 40.168474 | -104.917053 |
| 4,564.0 | 6.90 | 285.10 | 4,525.5 | 135.8 | -547.9 | 1,304,759.26 | 3,162,905.90 | 40.168483 | -104.917091 |
| 4,659.0 | 7.50 | 290.40 | 4,619.7 | 139.4 | -559.2 | 1,304,762.84 | 3,162,894.56 | 40.168493 | -104.917131 |
| 4,754.0 | 8.30 | 285.50 | 4,713.8 | 143.4 | -571.6 | 1,304,766.75 | 3,162,882.11 | 40.168504 | -104.917176 |
| 4,848.0 | 8.80 | 287.80 | 4,806.8 | 147.4 | -585.0 | 1,304,770.67 | 3,162,868.70 | 40.168515 | -104.917224 |
| 4,944.0 | 8.40 | 287.80 | 4,901.7 | 151.8 | -598.7 | 1,304,774.97 | 3,162,855.00 | 40.168527 | -104.917272 |
| 5,039.0 | 7.80 | 288.30 | 4,995.8 | 155.9 | -611.4 | 1,304,779.03 | 3,162,842.25 | 40.168538 | -104.917318 |
| 5,134.0 | 8.60 | 285.80 | 5,089.8 | 159.9 | -624.4 | 1,304,782.90 | 3,162,829.27 | 40.168549 | -104.917364 |
| 5,229.0 | 7.80 | 288.50 | 5,183.8 | 163.9 | -637.3 | 1,304,786.80 | 3,162,816.29 | 40.168560 | -104.917411 |
| 5,323.0 | 8.50 | 286.30 | 5,276.9 | 167.9 | -650.0 | 1,304,790.69 | 3,162,803.55 | 40.168571 | -104.917456 |
| 5,418.0 | 8.00 | 287.70 | 5,370.9 | 171.8 | -663.1 | 1,304,794.58 | 3,162,790.49 | 40.168582 | -104.917503 |
| 5,512.0 | 6.80 | 285.80 | 5,464.1 | 175.3 | -674.6 | 1,304,798.01 | 3,162,778.88 | 40.168591 | -104.917544 |
| 5,607.0 | 6.70 | 282.80 | 5,558.4 | 178.1 | -685.5 | 1,304,800.70 | 3,162,768.05 | 40.168599 | -104.917583 |
| 5,702.0 | 7.20 | 293.40 | 5,652.8 | 181.7 | -696.3 | 1,304,804.22 | 3,162,757.15 | 40.168609 | -104.917622 |
| 5,797.0 | 7.50 | 293.00 | 5,747.0 | 186.5 | -707.5 | 1,304,808.93 | 3,162,745.95 | 40.168622 | -104.917662 |
| 5,891.0 | 9.10 | 286.80 | 5,840.0 | 191.0 | -720.3 | 1,304,813.39 | 3,162,733.16 | 40.168634 | -104.917708 |
| 5,986.0 | 8.00 | 287.70 | 5,933.9 | 195.2 | -733.8 | 1,304,817.49 | 3,162,719.64 | 40.168646 | -104.917756 |
| 6,081.0 | 8.50 | 284.80 | 6,027.9 | 199.0 | -746.8 | 1,304,821.20 | 3,162,706.53 | 40.168656 | -104.917803 |
| 6,176.0 | 9.30 | 284.90 | 6,121.8 | 202.8 | -761.0 | 1,304,824.88 | 3,162,692.30 | 40.168667 | -104.917854 |
| 6,270.0 | 7.80 | 284.60 | 6,214.8 | 206.3 | -774.6 | 1,304,828.35 | 3,162,678.76 | 40.168676 | -104.917902 |

Cathedral Energy Services

Survey Report - Geographic

| | | | |
|------------------|----------------------------|-------------------------------------|-----------------------------|
| Company: | EnCana Oil & Gas (USA) Inc | Local Co-ordinate Reference: | Well Vogl-McCoy 2E-5H-F267 |
| Project: | DJ Wattenberg | TVD Reference: | KB @ 4890.0ft (H&P 278) |
| Site: | S5-T2N-R67W (Vogl-McCoy) | MD Reference: | KB @ 4890.0ft (H&P 278) |
| Well: | Vogl-McCoy 2E-5H-F267 | North Reference: | True |
| Wellbore: | Hz | Survey Calculation Method: | Minimum Curvature |
| Design: | FINAL | Database: | USA EDM 5000 Multi Users DB |

| Survey | | | | | | | | | |
|---------------------|-----------------|-------------|---------------------|------------|------------|-------------------|------------------|-----------|-------------|
| Measured Depth (ft) | Inclination (°) | Azimuth (°) | Vertical Depth (ft) | +N/-S (ft) | +E/-W (ft) | Map Northing (ft) | Map Easting (ft) | Latitude | Longitude |
| 6,365.0 | 10.40 | 261.10 | 6,308.6 | 206.6 | -789.3 | 1,304,828.55 | 3,162,664.04 | 40.168677 | -104.917955 |
| 6,460.0 | 8.70 | 257.30 | 6,402.3 | 203.7 | -804.8 | 1,304,825.54 | 3,162,648.58 | 40.168669 | -104.918010 |
| 6,508.0 | 12.90 | 222.10 | 6,449.5 | 199.0 | -811.9 | 1,304,820.71 | 3,162,641.47 | 40.168656 | -104.918035 |
| 6,555.0 | 18.50 | 204.60 | 6,494.7 | 188.3 | -818.5 | 1,304,809.98 | 3,162,634.91 | 40.168627 | -104.918059 |
| 6,602.0 | 22.50 | 197.30 | 6,538.7 | 172.9 | -824.3 | 1,304,794.57 | 3,162,629.23 | 40.168585 | -104.918080 |
| 6,649.0 | 25.30 | 194.20 | 6,581.7 | 154.6 | -829.5 | 1,304,776.21 | 3,162,624.21 | 40.168534 | -104.918098 |
| 6,697.0 | 26.50 | 193.70 | 6,624.9 | 134.2 | -834.5 | 1,304,755.83 | 3,162,619.29 | 40.168478 | -104.918116 |
| 6,744.0 | 28.70 | 194.40 | 6,666.5 | 113.1 | -839.8 | 1,304,734.67 | 3,162,614.14 | 40.168420 | -104.918135 |
| 6,792.0 | 30.30 | 194.40 | 6,708.3 | 90.2 | -845.7 | 1,304,711.74 | 3,162,608.41 | 40.168358 | -104.918156 |
| 6,839.0 | 32.50 | 194.60 | 6,748.4 | 66.5 | -851.8 | 1,304,688.00 | 3,162,602.44 | 40.168293 | -104.918178 |
| 6,886.0 | 35.50 | 195.80 | 6,787.4 | 41.1 | -858.7 | 1,304,662.60 | 3,162,595.71 | 40.168223 | -104.918203 |
| 6,933.0 | 38.90 | 194.10 | 6,824.8 | 13.7 | -866.0 | 1,304,635.10 | 3,162,588.57 | 40.168148 | -104.918229 |
| 6,981.0 | 41.70 | 192.30 | 6,861.4 | -16.5 | -873.1 | 1,304,604.83 | 3,162,581.70 | 40.168065 | -104.918254 |
| 7,028.0 | 44.40 | 188.80 | 6,895.8 | -48.1 | -878.9 | 1,304,573.26 | 3,162,576.06 | 40.167978 | -104.918275 |
| 7,075.0 | 46.30 | 186.50 | 6,928.8 | -81.2 | -883.4 | 1,304,540.09 | 3,162,571.84 | 40.167887 | -104.918291 |
| 7,122.0 | 48.60 | 185.80 | 6,960.6 | -115.6 | -887.1 | 1,304,505.65 | 3,162,568.36 | 40.167793 | -104.918304 |
| 7,170.0 | 51.00 | 185.00 | 6,991.5 | -152.1 | -890.5 | 1,304,469.13 | 3,162,565.16 | 40.167692 | -104.918317 |
| 7,217.0 | 54.10 | 183.90 | 7,020.1 | -189.3 | -893.4 | 1,304,431.91 | 3,162,562.51 | 40.167590 | -104.918327 |
| 7,265.0 | 59.10 | 183.30 | 7,046.5 | -229.3 | -895.9 | 1,304,391.92 | 3,162,560.27 | 40.167481 | -104.918336 |
| 7,312.0 | 62.40 | 184.30 | 7,069.5 | -270.2 | -898.6 | 1,304,350.99 | 3,162,557.82 | 40.167368 | -104.918346 |
| 7,359.0 | 65.10 | 184.00 | 7,090.3 | -312.2 | -901.7 | 1,304,308.93 | 3,162,555.04 | 40.167253 | -104.918357 |
| 7,406.0 | 72.80 | 183.00 | 7,107.2 | -356.0 | -904.4 | 1,304,265.17 | 3,162,552.67 | 40.167133 | -104.918366 |
| 7,453.0 | 80.40 | 182.60 | 7,118.0 | -401.6 | -906.6 | 1,304,219.52 | 3,162,550.74 | 40.167007 | -104.918374 |
| 7,501.0 | 82.60 | 182.60 | 7,125.1 | -449.0 | -908.7 | 1,304,172.09 | 3,162,548.90 | 40.166877 | -104.918382 |
| 7,548.0 | 83.60 | 183.20 | 7,130.8 | -495.6 | -911.1 | 1,304,125.47 | 3,162,546.84 | 40.166749 | -104.918390 |
| 7,595.0 | 85.00 | 183.30 | 7,135.5 | -542.3 | -913.8 | 1,304,078.77 | 3,162,544.50 | 40.166621 | -104.918400 |
| 7,606.0 | 85.40 | 183.40 | 7,136.4 | -553.3 | -914.4 | 1,304,067.82 | 3,162,543.93 | 40.166591 | -104.918402 |
| 7,668.0 | 86.30 | 183.50 | 7,140.9 | -615.0 | -918.1 | 1,304,006.07 | 3,162,540.62 | 40.166422 | -104.918415 |
| 7,763.0 | 87.20 | 182.80 | 7,146.2 | -709.7 | -923.3 | 1,303,911.34 | 3,162,536.03 | 40.166162 | -104.918434 |
| 7,857.0 | 87.60 | 181.90 | 7,150.5 | -803.5 | -927.2 | 1,303,817.49 | 3,162,532.80 | 40.165904 | -104.918448 |
| 7,952.0 | 88.40 | 181.80 | 7,153.8 | -898.4 | -930.2 | 1,303,722.58 | 3,162,530.36 | 40.165644 | -104.918459 |
| 8,047.0 | 89.10 | 181.40 | 7,155.9 | -993.4 | -932.9 | 1,303,627.63 | 3,162,528.34 | 40.165383 | -104.918468 |
| 8,141.0 | 88.50 | 181.10 | 7,157.9 | -1,087.3 | -934.9 | 1,303,533.66 | 3,162,526.91 | 40.165125 | -104.918476 |
| 8,235.0 | 89.40 | 181.70 | 7,159.6 | -1,181.3 | -937.2 | 1,303,439.69 | 3,162,525.23 | 40.164867 | -104.918484 |
| 8,330.0 | 90.40 | 182.90 | 7,159.8 | -1,276.2 | -941.1 | 1,303,344.75 | 3,162,522.04 | 40.164607 | -104.918497 |
| 8,425.0 | 90.40 | 182.90 | 7,159.1 | -1,371.1 | -945.9 | 1,303,249.84 | 3,162,517.86 | 40.164346 | -104.918515 |
| 8,517.0 | 90.40 | 182.90 | 7,158.4 | -1,462.9 | -950.5 | 1,303,157.93 | 3,162,513.81 | 40.164094 | -104.918531 |
| 8,608.0 | 89.70 | 182.90 | 7,158.4 | -1,553.8 | -955.1 | 1,303,067.02 | 3,162,509.81 | 40.163845 | -104.918548 |
| 8,701.0 | 88.40 | 183.00 | 7,159.9 | -1,646.7 | -959.9 | 1,302,974.13 | 3,162,505.64 | 40.163590 | -104.918565 |
| 8,793.0 | 89.10 | 182.20 | 7,161.9 | -1,738.6 | -964.1 | 1,302,882.22 | 3,162,502.07 | 40.163337 | -104.918580 |
| 8,885.0 | 89.30 | 181.20 | 7,163.2 | -1,830.5 | -966.8 | 1,302,790.26 | 3,162,499.95 | 40.163085 | -104.918590 |
| 8,977.0 | 89.50 | 181.30 | 7,164.2 | -1,922.5 | -968.8 | 1,302,698.27 | 3,162,498.55 | 40.162832 | -104.918597 |
| 9,069.0 | 88.70 | 180.10 | 7,165.6 | -2,014.5 | -969.9 | 1,302,606.29 | 3,162,498.03 | 40.162580 | -104.918601 |
| 9,161.0 | 88.40 | 180.40 | 7,167.9 | -2,106.4 | -970.3 | 1,302,514.32 | 3,162,498.24 | 40.162328 | -104.918602 |
| 9,253.0 | 87.70 | 180.50 | 7,171.1 | -2,198.4 | -971.1 | 1,302,422.37 | 3,162,498.12 | 40.162075 | -104.918605 |
| 9,345.0 | 88.00 | 180.40 | 7,174.5 | -2,290.3 | -971.8 | 1,302,330.44 | 3,162,498.01 | 40.161823 | -104.918607 |
| 9,437.0 | 89.10 | 180.20 | 7,176.8 | -2,382.3 | -972.3 | 1,302,238.47 | 3,162,498.13 | 40.161570 | -104.918609 |
| 9,529.0 | 90.50 | 180.30 | 7,177.2 | -2,474.3 | -972.7 | 1,302,146.47 | 3,162,498.34 | 40.161318 | -104.918610 |
| 9,620.0 | 89.50 | 180.10 | 7,177.2 | -2,565.3 | -973.0 | 1,302,055.47 | 3,162,498.62 | 40.161068 | -104.918612 |
| 9,712.0 | 90.20 | 181.40 | 7,177.4 | -2,657.3 | -974.2 | 1,301,963.48 | 3,162,498.02 | 40.160815 | -104.918616 |
| 9,804.0 | 90.40 | 180.80 | 7,176.9 | -2,749.3 | -976.0 | 1,301,871.49 | 3,162,496.86 | 40.160563 | -104.918622 |
| 9,896.0 | 89.70 | 180.80 | 7,176.8 | -2,841.2 | -977.2 | 1,301,779.49 | 3,162,496.18 | 40.160310 | -104.918627 |
| 9,988.0 | 90.30 | 180.70 | 7,176.8 | -2,933.2 | -978.4 | 1,301,687.49 | 3,162,495.59 | 40.160058 | -104.918631 |
| 10,080.0 | 90.50 | 181.40 | 7,176.2 | -3,025.2 | -980.1 | 1,301,595.50 | 3,162,494.51 | 40.159805 | -104.918637 |
| 10,171.0 | 90.50 | 181.40 | 7,175.4 | -3,116.2 | -982.4 | 1,301,504.52 | 3,162,492.88 | 40.159556 | -104.918645 |

Cathedral Energy Services

Survey Report - Geographic

| | | | |
|------------------|----------------------------|-------------------------------------|-----------------------------|
| Company: | EnCana Oil & Gas (USA) Inc | Local Co-ordinate Reference: | Well Vogl-McCoy 2E-5H-F267 |
| Project: | DJ Wattenberg | TVD Reference: | KB @ 4890.0ft (H&P 278) |
| Site: | S5-T2N-R67W (Vogl-McCoy) | MD Reference: | KB @ 4890.0ft (H&P 278) |
| Well: | Vogl-McCoy 2E-5H-F267 | North Reference: | True |
| Wellbore: | Hz | Survey Calculation Method: | Minimum Curvature |
| Design: | FINAL | Database: | USA EDM 5000 Multi Users DB |

| Survey | | | | | | | | | |
|------------------------------|-----------------|-------------|---------------------|------------|------------|-------------------|------------------|-----------|-------------|
| Measured Depth (ft) | Inclination (°) | Azimuth (°) | Vertical Depth (ft) | +N/-S (ft) | +E/-W (ft) | Map Northing (ft) | Map Easting (ft) | Latitude | Longitude |
| 10,263.0 | 91.10 | 182.80 | 7,174.1 | -3,208.1 | -985.7 | 1,301,412.57 | 3,162,490.12 | 40.159303 | -104.918657 |
| 10,355.0 | 90.30 | 182.10 | 7,173.0 | -3,300.0 | -989.7 | 1,301,320.64 | 3,162,486.79 | 40.159051 | -104.918671 |
| 10,447.0 | 89.80 | 182.70 | 7,172.9 | -3,391.9 | -993.5 | 1,301,228.70 | 3,162,483.55 | 40.158799 | -104.918685 |
| 10,539.0 | 89.80 | 182.80 | 7,173.2 | -3,483.8 | -997.9 | 1,301,136.78 | 3,162,479.74 | 40.158546 | -104.918701 |
| 10,630.0 | 89.60 | 182.40 | 7,173.7 | -3,574.7 | -1,002.1 | 1,301,045.85 | 3,162,476.21 | 40.158297 | -104.918715 |
| 10,722.0 | 89.10 | 181.60 | 7,174.8 | -3,666.7 | -1,005.3 | 1,300,953.89 | 3,162,473.61 | 40.158044 | -104.918727 |
| 10,814.0 | 88.60 | 181.90 | 7,176.6 | -3,758.6 | -1,008.1 | 1,300,861.94 | 3,162,471.40 | 40.157792 | -104.918737 |
| 10,905.0 | 88.60 | 181.80 | 7,178.8 | -3,849.5 | -1,011.0 | 1,300,770.99 | 3,162,469.07 | 40.157543 | -104.918747 |
| 10,997.0 | 88.60 | 181.80 | 7,181.1 | -3,941.5 | -1,013.9 | 1,300,679.05 | 3,162,466.78 | 40.157290 | -104.918758 |
| 11,087.0 | 88.90 | 182.00 | 7,183.0 | -4,031.4 | -1,016.9 | 1,300,589.08 | 3,162,464.39 | 40.157043 | -104.918768 |
| 11,179.0 | 89.00 | 181.60 | 7,184.7 | -4,123.4 | -1,019.8 | 1,300,497.12 | 3,162,462.11 | 40.156791 | -104.918779 |
| 11,272.0 | 89.30 | 180.50 | 7,186.1 | -4,216.3 | -1,021.5 | 1,300,404.14 | 3,162,461.02 | 40.156536 | -104.918785 |
| 11,363.0 | 91.60 | 181.80 | 7,185.4 | -4,307.3 | -1,023.3 | 1,300,313.16 | 3,162,459.79 | 40.156286 | -104.918791 |
| 11,455.0 | 93.10 | 182.50 | 7,181.6 | -4,399.2 | -1,026.7 | 1,300,221.29 | 3,162,456.95 | 40.156034 | -104.918804 |
| 11,549.0 | 93.10 | 181.90 | 7,176.5 | -4,493.0 | -1,030.4 | 1,300,127.47 | 3,162,453.97 | 40.155776 | -104.918816 |
| 11,644.0 | 91.40 | 182.50 | 7,172.8 | -4,587.8 | -1,034.0 | 1,300,032.62 | 3,162,450.95 | 40.155516 | -104.918830 |
| 11,738.0 | 87.60 | 181.10 | 7,173.6 | -4,681.7 | -1,036.9 | 1,299,938.67 | 3,162,448.62 | 40.155258 | -104.918840 |
| 11,833.0 | 87.70 | 181.30 | 7,177.5 | -4,776.6 | -1,038.9 | 1,299,843.76 | 3,162,447.26 | 40.154998 | -104.918847 |
| 11,928.0 | 88.80 | 181.80 | 7,180.4 | -4,871.5 | -1,041.5 | 1,299,748.83 | 3,162,445.31 | 40.154737 | -104.918856 |
| 12,023.0 | 89.10 | 181.60 | 7,182.2 | -4,966.5 | -1,044.3 | 1,299,653.87 | 3,162,443.12 | 40.154476 | -104.918866 |
| 12,117.0 | 89.90 | 181.10 | 7,183.0 | -5,060.4 | -1,046.5 | 1,299,559.89 | 3,162,441.53 | 40.154218 | -104.918874 |
| 12,212.0 | 88.80 | 181.10 | 7,184.1 | -5,155.4 | -1,048.4 | 1,299,464.90 | 3,162,440.33 | 40.153958 | -104.918881 |
| 12,307.0 | 88.70 | 180.90 | 7,186.1 | -5,250.4 | -1,050.0 | 1,299,369.93 | 3,162,439.30 | 40.153697 | -104.918887 |
| 12,402.0 | 88.00 | 180.70 | 7,188.9 | -5,345.3 | -1,051.3 | 1,299,274.97 | 3,162,438.60 | 40.153436 | -104.918891 |
| 12,497.0 | 89.40 | 180.60 | 7,191.0 | -5,440.3 | -1,052.4 | 1,299,180.00 | 3,162,438.15 | 40.153176 | -104.918895 |
| 12,592.0 | 90.30 | 181.80 | 7,191.3 | -5,535.3 | -1,054.4 | 1,299,085.01 | 3,162,436.79 | 40.152915 | -104.918902 |
| 12,686.0 | 92.10 | 181.00 | 7,189.3 | -5,629.2 | -1,056.7 | 1,298,991.05 | 3,162,435.11 | 40.152657 | -104.918911 |
| 12,781.0 | 92.40 | 182.80 | 7,185.6 | -5,724.1 | -1,059.9 | 1,298,896.16 | 3,162,432.59 | 40.152397 | -104.918922 |
| 12,875.0 | 91.80 | 183.90 | 7,182.1 | -5,817.9 | -1,065.3 | 1,298,802.35 | 3,162,427.72 | 40.152139 | -104.918941 |
| 12,970.0 | 90.30 | 182.60 | 7,180.4 | -5,912.7 | -1,070.7 | 1,298,707.49 | 3,162,422.96 | 40.151879 | -104.918961 |
| 13,064.0 | 88.00 | 181.90 | 7,181.8 | -6,006.6 | -1,074.4 | 1,298,613.56 | 3,162,419.89 | 40.151621 | -104.918974 |
| 13,159.0 | 87.70 | 181.10 | 7,185.4 | -6,101.5 | -1,076.9 | 1,298,518.65 | 3,162,418.03 | 40.151361 | -104.918983 |
| 13,253.0 | 87.10 | 181.20 | 7,189.6 | -6,195.4 | -1,078.8 | 1,298,424.75 | 3,162,416.76 | 40.151103 | -104.918990 |
| 13,347.0 | 88.40 | 180.70 | 7,193.3 | -6,289.3 | -1,080.3 | 1,298,330.83 | 3,162,415.83 | 40.150845 | -104.918995 |
| 13,442.0 | 89.20 | 179.70 | 7,195.3 | -6,384.3 | -1,080.7 | 1,298,235.86 | 3,162,416.12 | 40.150584 | -104.918996 |
| 13,536.0 | 89.40 | 179.60 | 7,196.4 | -6,478.3 | -1,080.1 | 1,298,141.87 | 3,162,417.31 | 40.150326 | -104.918994 |
| 13,631.0 | 90.00 | 179.50 | 7,196.9 | -6,573.3 | -1,079.4 | 1,298,046.88 | 3,162,418.69 | 40.150066 | -104.918991 |
| 13,725.0 | 89.70 | 179.20 | 7,197.2 | -6,667.3 | -1,078.3 | 1,297,952.90 | 3,162,420.37 | 40.149808 | -104.918988 |
| 13,819.0 | 88.70 | 179.90 | 7,198.5 | -6,761.2 | -1,077.6 | 1,297,858.92 | 3,162,421.73 | 40.149550 | -104.918985 |
| 13,914.0 | 87.70 | 176.80 | 7,201.5 | -6,856.1 | -1,074.8 | 1,297,764.04 | 3,162,425.09 | 40.149289 | -104.918975 |
| 14,009.0 | 88.90 | 176.00 | 7,204.3 | -6,950.9 | -1,068.9 | 1,297,669.31 | 3,162,431.68 | 40.149029 | -104.918954 |
| 14,103.0 | 88.60 | 176.20 | 7,206.4 | -7,044.7 | -1,062.5 | 1,297,575.57 | 3,162,438.69 | 40.148771 | -104.918931 |
| 14,198.0 | 89.40 | 175.90 | 7,208.0 | -7,139.5 | -1,055.9 | 1,297,480.85 | 3,162,445.86 | 40.148511 | -104.918908 |
| 14,292.0 | 90.20 | 175.70 | 7,208.3 | -7,233.2 | -1,049.0 | 1,297,387.16 | 3,162,453.36 | 40.148254 | -104.918883 |
| 14,387.0 | 90.60 | 175.60 | 7,207.7 | -7,327.9 | -1,041.8 | 1,297,292.48 | 3,162,461.19 | 40.147994 | -104.918857 |
| 14,481.0 | 89.80 | 174.20 | 7,207.4 | -7,421.6 | -1,033.5 | 1,297,198.91 | 3,162,470.16 | 40.147737 | -104.918827 |
| 14,576.0 | 89.80 | 174.40 | 7,207.7 | -7,516.1 | -1,024.0 | 1,297,104.45 | 3,162,480.22 | 40.147477 | -104.918793 |
| 14,670.0 | 91.20 | 175.30 | 7,206.9 | -7,609.7 | -1,015.6 | 1,297,010.89 | 3,162,489.28 | 40.147220 | -104.918763 |
| 14,690.0 | 91.20 | 175.50 | 7,206.4 | -7,629.6 | -1,014.0 | 1,296,991.00 | 3,162,491.01 | 40.147166 | -104.918758 |
| Last CES Survey @ 14,690' MD | | | | | | | | | |
| 14,740.0 | 91.20 | 175.50 | 7,205.4 | -7,679.4 | -1,010.1 | 1,296,941.19 | 3,162,495.26 | 40.147029 | -104.918743 |
| PTB @ 14,740' | | | | | | | | | |

Cathedral Energy Services

Survey Report - Geographic

| | | | |
|------------------|----------------------------|-------------------------------------|-----------------------------|
| Company: | EnCana Oil & Gas (USA) Inc | Local Co-ordinate Reference: | Well Vogl-McCoy 2E-5H-F267 |
| Project: | DJ Wattenberg | TVD Reference: | KB @ 4890.0ft (H&P 278) |
| Site: | S5-T2N-R67W (Vogl-McCoy) | MD Reference: | KB @ 4890.0ft (H&P 278) |
| Well: | Vogl-McCoy 2E-5H-F267 | North Reference: | True |
| Wellbore: | Hz | Survey Calculation Method: | Minimum Curvature |
| Design: | FINAL | Database: | USA EDM 5000 Multi Users DB |

| Design Targets | | | | | | | | | |
|---|-----------|----------|---------|----------|----------|--------------|--------------|-----------|-------------|
| Target Name | | | | | | | | | |
| - hit/miss target | Dip Angle | Dip Dir. | TVD | +N/-S | +E/-W | Northing | Easting | Latitude | Longitude |
| - Shape | (°) | (°) | (ft) | (ft) | (ft) | (ft) | (ft) | | |
| Vogl-McCoy 2E-5H-F267 | 0.00 | 0.00 | 7,173.9 | -7,730.0 | -1,017.6 | 1,296,890.56 | 3,162,488.11 | 40.146890 | -104.918770 |
| - actual wellpath misses target center by 60.1ft at 14740.0ft MD (7205.4 TVD, -7679.4 N, -1010.1 E) | | | | | | | | | |
| - Point | | | | | | | | | |

| Design Annotations | | | | | |
|--------------------|----------------|-------------------|------------|------------------------------|--|
| Measured Depth | Vertical Depth | Local Coordinates | | | |
| (ft) | (ft) | +N/-S (ft) | +E/-W (ft) | Comment | |
| 14,690.0 | 7,206.4 | -7,629.6 | -1,014.0 | Last CES Survey @ 14,690' MD | |
| 14,740.0 | 7,205.4 | -7,679.4 | -1,010.1 | PTB @ 14,740' | |

Checked By: _____ Approved By: _____ Date: _____