

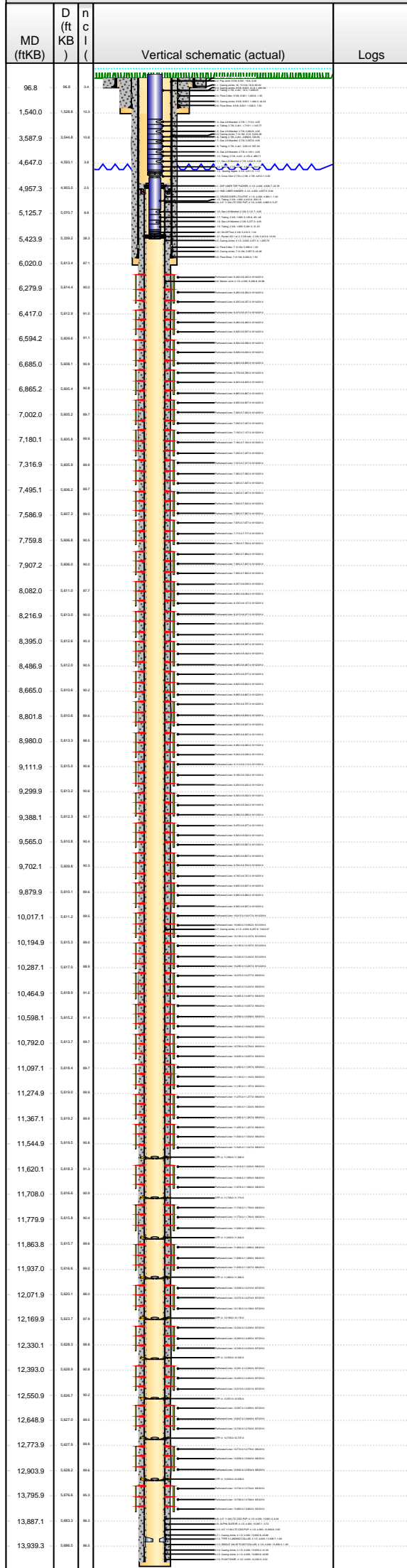


Lease Review

Well Name: RAZOR FEDERAL 26L-2301A

API Number 051233798600	WPC ID 1CO0761030	Well Permit Number	Field Name DJ Horizontal Niobrara	County Weld	State CO
Well Configuration Type Lateral/Horizontal	Orig KB Elv (ft) 4,753.80	Ground Elevation (ft) 4,737.00	Casing Flange Elevation (ft)	Tubing Head Elevation (ft)	Total Depth (ftKB) 14,049.0
Original Spud Date 5/20/2014	Completion Date 9/14/2014	Asset Group Redtail	Responsible Engineer Charles Ohlson	N/S Dist (ft) 2,319.0	N/S Ref FSL
				E/W Dist (ft) 627.0	E/W Ref FWL
Lot	Quarter 1 NW	Quarter 2 SW	Quarter 3	Quarter 4	Section 26
					Section Suffix
					Section Type
					Township 10 N
					Township N/S Dir
					Range 58
					Range E/W Dir W
					Meridian

Lateral/Horizontal - Original Hole, 12/11/2014 12:49:15 PM



Section Des	Wellbore Name	Start Date	Size (in)	Act Top (ftKB)	Act Btm (ftKB)
Conductor	Original Hole	3/28/2014	20	16.8	96.8
Surface	Original Hole	5/20/2014	13 1/2	96.8	1,540.0
Intermediate	Original Hole	5/22/2014	8 3/4	1,540.0	6,020.0
Lateral	Original Hole	5/25/2014	6	6,020.0	14,049.0

Conductor Pipe, 96.8ftKB						
OD (in)	Wt (lb/ft)	Grade	Top (ftKB)	Btm (ftKB)	Len (ft)	Item Des
16	75.00	J-55	16.8	96.8	80.00	Casing Joints

Surface Csg, 1,530.0ftKB						
OD (in)	Wt (lb/ft)	Grade	Top (ftKB)	Btm (ftKB)	Len (ft)	Item Des
9 5/8	36.00	J-55	16.8	16.8	0.00	Landing Joint
9 5/8	36.00	J-55	16.8	21.8	5.00	Pup Joint
9 5/8	36.00	J-55	21.8	1,482.8	1,461.00	Casing Joints
9 5/8	36.00	J-55	1,482.8	1,484.3	1.50	Float Collar
9 5/8	36.00	J-55	1,484.3	1,528.5	44.24	Casing Joints
9 5/8	36.00	J-55	1,528.5	1,530.0	1.50	Float Shoe

Intermediate Csg, 6,001.5ftKB						
OD (in)	Wt (lb/ft)	Grade	Top (ftKB)	Btm (ftKB)	Len (ft)	Item Des
7	29.00	L-80	16.8	16.8	0.00	LANDING JOINT
7	29.00	L-80	16.8	21.8	5.00	PUP JOINT
7	29.00	L-80	21.8	5,956.0	5,934.26	Casing Joints
7	29.00	L-80	5,956.0	5,957.5	1.50	Float Collar
7	29.00	L-80	5,957.5	6,000.0	42.48	Casing Joints
7	29.00	L-80	6,000.0	6,001.5	1.50	Float Shoe

Liner, 14,027.0ftKB						
OD (in)	Wt (lb/ft)	Grade	Top (ftKB)	Btm (ftKB)	Len (ft)	Item Des
4 1/2	11.60	L-80	4,936.7	4,957.5	20.78	ZXP LINER TOP PACKER
4 1/2	11.60	L-80	4,957.5	4,964.1	6.64	HMC LINER HANGER
4 1/2	11.60	L-80	4,964.1	4,965.5	1.40	CROSS OVER LTCxVTHT
4 1/2	11.60	L-80	4,965.5	4,971.0	5.47	4.5" 11.6# LTC CSG PUP
4 1/2	11.60	L-80	4,971.0	6,236.8	1,265.79	Casing Joints
4 1/2	11.60	L-80	6,236.8	6,257.6	20.86	Marker Joint
4 1/2	11.60	L-80	6,257.6	13,881.0	7,623.37	Casing Joints
4 1/2	11.60	L-80	13,881.0	13,887.1	6.04	4.5" 11.6# LTC CSG PUP
4 1/2	11.60	L-80	13,887.1	13,890.8	3.72	ALPHA SLEEVE
4 1/2	11.60	L-80	13,890.8	13,892.8	2.05	4.5" 11.6# LTC CSG PUP
4 1/2	11.60	L-80	13,892.8	13,936.7	43.86	Casing Joints
4 1/2	11.60	L-80	13,936.7	13,938.3	1.60	TYPE II LANDING COLLAR
4 1/2	11.60	L-80	13,938.3	13,939.3	1.06	SINGLE VALVE FLOAT COLLAR
4 1/2	11.60	L-80	13,939.3	13,980.6	41.29	Casing Joints
4 1/2	11.60	L-80	13,980.6	14,024.5	43.85	Casing Joints
4 1/2	11.60	L-80	14,024.5	14,027.0	2.52	FLOAT SHOE

Cement Stages					
Des	Pump Start Date	Drill Out Date	Top (ftKB)	Btm (ftKB)	Top Meas Meth
Conductor Cement	3/28/2014		16.8	96.8	Returns to Surface
Surface Casing Cement	5/21/2014		16.8	1,530.0	Returns to Surface
Intermediate Casing Cement	5/24/2014		16.8	6,001.5	Returns to Surface
Liner Cement	5/30/2014		4,936.7	14,027.0	Volume Calculations

Perforations					
Type of Hole	Date	Top (ftKB)	Btm (ftKB)	Zone	
Perforated Liner	9/14/2014	6,240.0	6,242.0	Niobrara, Original Hole	
Perforated Liner	9/14/2014	6,280.0	6,282.0	Niobrara, Original Hole	
Perforated Liner	9/14/2014	6,325.0	6,327.0	Niobrara, Original Hole	
Perforated Liner	9/14/2014	6,415.0	6,417.0	Niobrara, Original Hole	
Perforated Liner	9/14/2014	6,460.0	6,462.0	Niobrara, Original Hole	
Perforated Liner	9/14/2014	6,505.0	6,507.0	Niobrara, Original Hole	
Perforated Liner	9/14/2014	6,594.0	6,596.0	Niobrara, Original Hole	
Perforated Liner	9/14/2014	6,638.0	6,640.0	Niobrara, Original Hole	
Perforated Liner	9/14/2014	6,683.0	6,685.0	Niobrara, Original Hole	
Perforated Liner	9/14/2014	6,778.0	6,780.0	Niobrara, Original Hole	
Perforated Liner	9/14/2014	6,823.0	6,825.0	Niobrara, Original Hole	
Perforated Liner	9/14/2014	6,865.0	6,867.0	Niobrara, Original Hole	
Perforated Liner	9/14/2014	6,955.0	6,957.0	Niobrara, Original Hole	
Perforated Liner	9/14/2014	7,000.0	7,002.0	Niobrara, Original Hole	
Perforated Liner	9/14/2014	7,045.0	7,047.0	Niobrara, Original Hole	
Perforated Liner	9/13/2014	7,135.0	7,137.0	Niobrara, Original Hole	
Perforated Liner	9/13/2014	7,180.0	7,182.0	Niobrara, Original Hole	
Perforated Liner	9/13/2014	7,225.0	7,227.0	Niobrara, Original Hole	
Perforated Liner	9/13/2014	7,315.0	7,317.0	Niobrara, Original Hole	
Perforated Liner	9/13/2014	7,360.0	7,362.0	Niobrara, Original Hole	
Perforated Liner	9/13/2014	7,405.0	7,407.0	Niobrara, Original Hole	

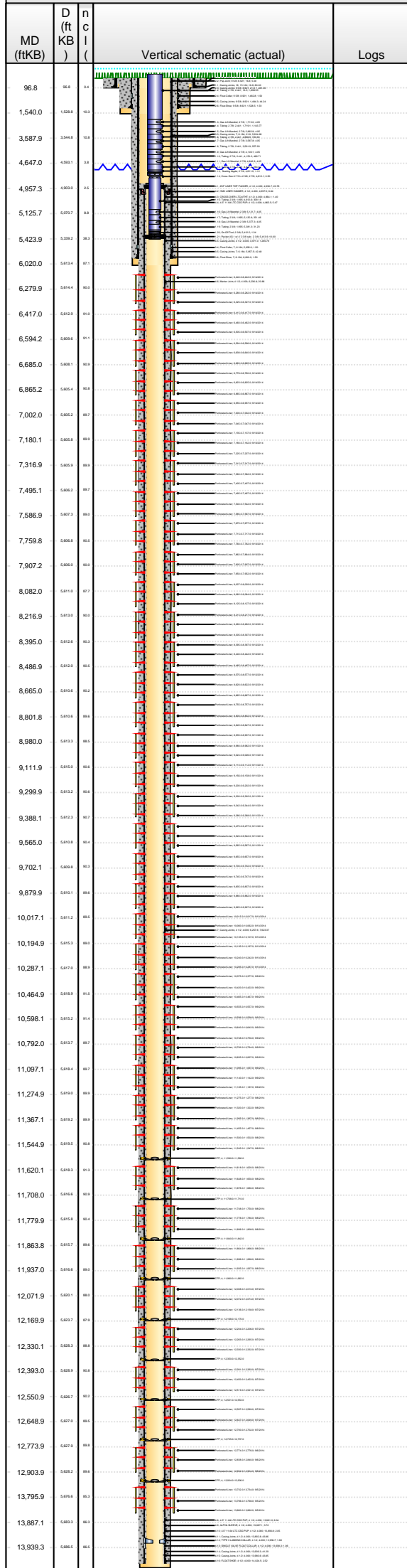


Lease Review

Well Name: RAZOR FEDERAL 26L-2301A

API Number 051233798600	WPC ID 1CO0761030	Well Permit Number	Field Name DJ Horizontal Niobrara	County Weld	State CO
Well Configuration Type Lateral/Horizontal	Orig KB Elv (ft) 4,753.80	Ground Elevation (ft) 4,737.00	Casing Flange Elevation (ft)	Tubing Head Elevation (ft)	Total Depth (ftKB) 14,049.0
Original Spud Date 5/20/2014	Completion Date 9/14/2014	Asset Group Retail	Responsible Engineer Charles Ohlson	N/S Dist (ft) 2,319.0	N/S Ref FSL
				E/W Dist (ft) 627.0	E/W Ref FWL
Lot	Quarter 1 NW	Quarter 2 SW	Quarter 3	Quarter 4	Section 26
					Section Suffix
					Section Type
					Township 10 N
					Township N/S Dir
					Range 58 W
					Range E/W Dir
					Meridian

Lateral/Horizontal - Original Hole, 12/11/2014 12:49:17 PM



Perforations		Type of Hole	Date	Top (ftKB)	Btm (ftKB)	Zone
96.8	96.8	Perforated Liner	9/8/2014	11,806.0	11,808.0	Niobrara, Original Hole
1,540.0	1,528.8	Perforated Liner	9/8/2014	11,864.0	11,866.0	Niobrara, Original Hole
3,587.9	3,544.8	Perforated Liner	9/8/2014	11,896.0	11,898.0	Niobrara, Original Hole
4,647.0	4,593.1	Perforated Liner	9/8/2014	11,935.0	11,937.0	Niobrara, Original Hole
4,957.3	4,903.5	Perforated Liner	9/7/2014	12,008.0	12,010.0	Niobrara, Original Hole
5,125.7	5,071.7	Perforated Liner	9/7/2014	12,072.0	12,074.0	Niobrara, Original Hole
5,423.9	5,371.9	Perforated Liner	9/7/2014	12,136.0	12,138.0	Niobrara, Original Hole
6,020.0	5,970.0	Perforated Liner	9/7/2014	12,204.0	12,206.0	Niobrara, Original Hole
6,279.9	6,229.9	Perforated Liner	9/7/2014	12,263.0	12,265.0	Niobrara, Original Hole
6,417.0	6,367.0	Perforated Liner	9/7/2014	12,330.0	12,332.0	Niobrara, Original Hole
6,594.2	6,542.2	Perforated Liner	9/7/2014	12,391.0	12,393.0	Niobrara, Original Hole
6,885.0	6,833.0	Perforated Liner	9/7/2014	12,450.0	12,452.0	Niobrara, Original Hole
6,885.2	6,833.2	Perforated Liner	9/7/2014	12,519.0	12,521.0	Niobrara, Original Hole
7,002.0	6,950.0	Perforated Liner	9/7/2014	12,587.0	12,589.0	Niobrara, Original Hole
7,180.1	7,128.1	Perforated Liner	9/7/2014	12,647.0	12,649.0	Niobrara, Original Hole
7,316.9	7,264.9	Perforated Liner	9/7/2014	12,700.0	12,702.0	Niobrara, Original Hole
7,495.1	7,443.1	Perforated Liner	9/6/2014	12,774.0	12,776.0	Niobrara, Original Hole
7,586.9	7,534.9	Perforated Liner	9/6/2014	12,838.0	12,840.0	Niobrara, Original Hole
7,759.8	7,707.8	Perforated Liner	9/6/2014	12,902.0	12,904.0	Niobrara, Original Hole
7,907.2	7,855.2	Perforated Liner	9/5/2014	13,732.0	13,734.0	Niobrara, Original Hole
8,082.0	8,030.0	Perforated Liner	9/5/2014	13,796.0	13,798.0	Niobrara, Original Hole
8,216.9	8,164.9	Perforated Liner	9/5/2014	13,860.0	13,862.0	Niobrara, Original Hole
Sand Frac on 9/5/2014 06:00						
Comment				Min Top De...	Max Btm D...	Frac Length (ft)
Treatment End Date:9/14/2014; Number of staged intervals: 38; Total 15% HCl used: 940 bbl; Min frac gradient: 0.793 psi/ft; Number of perms: 1368				6,240.0	13,862.0	
Stim/Treat Fluids						
ClearStar XL Gel; Linear Gel; 15% HCl, <fluidtyp>						
Proppant Frm (lb)	Total Clean Vol...	Avg Treat Rate...	Max Treat Rate...	Avg Treat Press...	P Max (psi)	Frac Gradient (p...
5,274,448.0	122635.00	49.50	71.20	5,854.0	8,306.0	0.83
Stim/Treat Stages						
Stg #	Start Date	Top Depth (ftKB)	Bottom Depth (ftKB)	Vol Clean Pump (bbl)	Vol Slurry (bbl)	
1	9/5/2014	13,732.0	13,862.0	3895.70	3979.30	
Additive		Type	Amount	Units	Sand Size	
Proppant		20/40 WS	75,205.0	lb	20/40	
Additive		Type	Amount	Units	Sand Size	
Proppant		40/70 WS	2,408.0	lb	40/70	
Stg #	Start Date	Top Depth (ftKB)	Bottom Depth (ftKB)	Vol Clean Pump (bbl)	Vol Slurry (bbl)	
2	9/7/2014	12,774.0	12,904.0	3295.30	3432.20	
Additive		Type	Amount	Units	Sand Size	
Proppant		20/40 WS	124,657.0	lb	20/40	
Additive		Type	Amount	Units	Sand Size	
Proppant		40/70 WS	2,482.0	lb	40/70	
Stg #	Start Date	Top Depth (ftKB)	Bottom Depth (ftKB)	Vol Clean Pump (bbl)	Vol Slurry (bbl)	
3	9/7/2014	12,587.0	12,702.0	3267.50	3410.70	
Additive		Type	Amount	Units	Sand Size	
Proppant		20/40 WS	130,351.0	lb	20/40	
Additive		Type	Amount	Units	Sand Size	
Proppant		40/70 WS	2,657.0	lb	40/70	
Stg #	Start Date	Top Depth (ftKB)	Bottom Depth (ftKB)	Vol Clean Pump (bbl)	Vol Slurry (bbl)	
4	9/7/2014	12,391.0	12,521.0	3334.00	3499.00	
Additive		Type	Amount	Units	Sand Size	
Proppant		20/40 WS	150,275.0	lb	20/40	
Additive		Type	Amount	Units	Sand Size	
Proppant		40/70 WS	3,007.0	lb	40/70	
Stg #	Start Date	Top Depth (ftKB)	Bottom Depth (ftKB)	Vol Clean Pump (bbl)	Vol Slurry (bbl)	
5	9/7/2014	12,204.0	12,332.0	3340.60	3506.70	
Additive		Type	Amount	Units	Sand Size	
Proppant		20/40 WS	151,501.0	lb	20/40	
Additive		Type	Amount	Units	Sand Size	
Proppant		40/70 WS	2,784.0	lb	40/70	
Stg #	Start Date	Top Depth (ftKB)	Bottom Depth (ftKB)	Vol Clean Pump (bbl)	Vol Slurry (bbl)	
6	9/7/2014	12,008.0	12,138.0	3354.10	3518.00	
Additive		Type	Amount	Units	Sand Size	
Proppant		20/40 WS	149,275.0	lb	20/40	
Additive		Type	Amount	Units	Sand Size	
Proppant		40/70 WS	2,953.0	lb	40/70	
Stg #	Start Date	Top Depth (ftKB)	Bottom Depth (ftKB)	Vol Clean Pump (bbl)	Vol Slurry (bbl)	
7	9/7/2014	11,864.0	11,937.0	3351.10	3523.70	
Additive		Type	Amount	Units	Sand Size	
Proppant		20/40 WS	157,489.0	lb	20/40	
Additive		Type	Amount	Units	Sand Size	
Proppant		40/70 WS	2,866.0	lb	40/70	
Stg #	Start Date	Top Depth (ftKB)	Bottom Depth (ftKB)	Vol Clean Pump (bbl)	Vol Slurry (bbl)	
8	9/8/2014	11,748.0	11,808.0	3452.60	3619.00	
Additive		Type	Amount	Units	Sand Size	
Proppant		20/40 WS	152,238.0	lb	20/40	
Additive		Type	Amount	Units	Sand Size	
Proppant		40/70 WS	2,360.0	lb	40/70	
Stg #	Start Date	Top Depth (ftKB)	Bottom Depth (ftKB)	Vol Clean Pump (bbl)	Vol Slurry (bbl)	
9	9/8/2014	11,618.0	11,680.0	3327.10	3492.70	
Additive		Type	Amount	Units	Sand Size	
Proppant		20/40 WS	150,932.0	lb	20/40	
Additive		Type	Amount	Units	Sand Size	
Proppant		40/70 WS	2,919.0	lb	40/70	



Lease Review

Well Name: RAZOR FEDERAL 26L-2301A

API Number 051233798600	WPC ID 1CO0761030	Well Permit Number	Field Name DJ Horizontal Niobrara	County Weld	State CO
Well Configuration Type Lateral/Horizontal	Orig KB Elv (ft) 4,753.80	Ground Elevation (ft) 4,737.00	Casing Flange Elevation (ft)	Tubing Head Elevation (ft)	Total Depth (ftKB) 14,049.0
Original Spud Date 5/20/2014	Completion Date 9/14/2014	Asset Group Retail	Responsible Engineer Charles Ohlson	N/S Dist (ft) 2,319.0	N/S Ref FSL
				E/W Dist (ft) 627.0	E/W Ref FWL
Lot	Quarter 1 NW	Quarter 2 SW	Quarter 3	Quarter 4	Section 26
			Section Suffix	Section Type	Township 10 N
					Township N/S Dir Range 58 W
					Meridian

Lateral/Horizontal - Original Hole, 12/11/2014 12:49:19 PM

MD (ftKB)	D (ft)	nc l (ft)	Vertical schematic (actual)	Logs	Stim/Treat Stages					
					Stg #	Start Date	Top Depth (ftKB)	Bottom Depth (ftKB)	Vol Clean Pump (bbl)	Vol Slurry (bbl)
					10	9/8/2014	11,455.0	11,547.0	2286.70	2311.40
					Additive Proppant	Type 20/40 WS	Amount 20,280.0	Units lb	Sand Size 20/40	
					Additive Proppant	Type 40/70 WS	Amount 2,631.0	Units lb	Sand Size 40/70	
96.8	96.8	11.4			11	9/8/2014	11,275.0	11,367.0	961.30	964.10
1,540.0	1,528.8	11.2			Additive Proppant	Type 20/40 WS	Amount 151,501.0	Units lb	Sand Size 20/40	
3,587.9	3,544.8	11.0			Additive Proppant	Type 40/70 WS	Amount 2,564.0	Units lb	Sand Size 40/70	
4,647.0	4,593.1	11.8			12	9/8/2014	11,095.0	11,187.0	3175.20	3200.30
4,957.3	4,903.5	11.8			Additive Proppant	Type 20/40 WS	Amount 20,413.0	Units lb	Sand Size 20/40	
5,125.7	5,071.7	11.8			Additive Proppant	Type 40/70 WS	Amount 2,889.0	Units lb	Sand Size 40/70	
5,423.9	5,369.2	11.7			13	9/9/2014	10,748.0	10,837.0	3331.90	3496.20
6,020.0	5,914.4	11.6			Additive Proppant	Type 20/40 WS	Amount 150,271.0	Units lb	Sand Size 20/40	
6,279.9	6,154.4	11.5			Additive Proppant	Type 40/70 WS	Amount 2,295.0	Units lb	Sand Size 40/70	
6,417.0	6,292.3	11.7			14	9/9/2014	10,555.0	10,642.0	3345.00	3506.20
6,594.2	6,488.6	11.6			Additive Proppant	Type 20/40 WS	Amount 147,143.0	Units lb	Sand Size 20/40	
6,885.0	6,804.1	11.9			Additive Proppant	Type 40/70 WS	Amount 2,600.0	Units lb	Sand Size 40/70	
6,885.2	6,805.4	11.8			15	9/10/2014	10,375.0	10,467.0	3615.30	3758.70
7,002.0	6,855.2	11.8			Additive Proppant	Type 20/40 WS	Amount 130,347.0	Units lb	Sand Size 20/40	
7,180.1	7,055.3	11.8			Additive Proppant	Type 40/70 WS	Amount 2,803.0	Units lb	Sand Size 40/70	
7,316.9	7,185.9	11.9			16	9/10/2014	10,195.0	10,287.0	3273.00	3434.50
7,495.1	7,365.9	11.9			Additive Proppant	Type 20/40 WS	Amount 147,237.0	Units lb	Sand Size 20/40	
7,586.9	7,456.9	11.9			Additive Proppant	Type 40/70 WS	Amount 2,756.0	Units lb	Sand Size 40/70	
7,759.8	7,629.8	11.9			17	9/10/2014	10,015.0	10,107.0	3285.60	3450.30
7,907.2	7,777.2	11.9			Additive Proppant	Type 20/40 WS	Amount 150,284.0	Units lb	Sand Size 20/40	
8,082.0	7,950.0	11.9			Additive Proppant	Type 40/70 WS	Amount 2,679.0	Units lb	Sand Size 40/70	
8,216.9	8,089.0	11.9			18	9/10/2014	9,835.0	9,927.0	3027.40	3184.70
8,395.0	8,254.0	11.9			Additive Proppant	Type 20/40 WS	Amount 143,454.0	Units lb	Sand Size 20/40	
8,486.9	8,341.9	11.9			Additive Proppant	Type 40/70 WS	Amount 2,682.0	Units lb	Sand Size 40/70	
8,665.0	8,504.0	11.9			19	9/10/2014	9,655.0	9,747.0	3308.60	3473.50
8,801.8	8,644.0	11.9			Additive Proppant	Type 20/40 WS	Amount 150,578.0	Units lb	Sand Size 20/40	
8,980.0	8,819.0	11.9			Additive Proppant	Type 40/70 WS	Amount 2,544.0	Units lb	Sand Size 40/70	
9,111.9	8,952.0	11.9			20	9/10/2014	9,475.0	9,567.0	3332.20	3497.60
9,299.9	9,132.0	11.9			Additive Proppant	Type 20/40 WS	Amount 150,897.0	Units lb	Sand Size 20/40	
9,388.1	9,213.0	11.7			Additive Proppant	Type 40/70 WS	Amount 2,716.0	Units lb	Sand Size 40/70	
9,565.0	9,393.0	11.9			21	9/11/2014	9,300.0	9,388.0	3342.70	3504.30
9,702.1	9,504.0	11.9			Additive Proppant	Type 20/40 WS	Amount 147,545.0	Units lb	Sand Size 20/40	
9,879.9	9,641.0	11.9			Additive Proppant	Type 40/70 WS	Amount 2,583.0	Units lb	Sand Size 40/70	
10,017.1	9,812.0	11.9			22	9/11/2014	9,110.0	9,202.0	3281.70	3449.80
10,194.9	9,993.0	11.9			Additive Proppant	Type 20/40 WS	Amount 153,464.0	Units lb	Sand Size 20/40	
10,287.1	10,074.0	11.9			Additive Proppant	Type 40/70 WS	Amount 2,697.0	Units lb	Sand Size 40/70	
10,464.9	10,255.0	11.9			23	9/11/2014	8,935.0	9,026.0	3292.50	3460.00
10,598.1	10,389.0	11.9			Additive Proppant	Type 20/40 WS	Amount 152,857.0	Units lb	Sand Size 20/40	
10,792.0	10,583.0	11.9			Additive Proppant	Type 40/70 WS	Amount 2,766.0	Units lb	Sand Size 40/70	
11,097.1	10,888.0	11.9			24	9/12/2014	8,755.0	8,847.0	3295.20	3458.40
11,274.9	11,079.0	11.9			Additive Proppant	Type 20/40 WS	Amount 148,706.0	Units lb	Sand Size 20/40	
11,367.1	11,171.0	11.9			Additive Proppant	Type 40/70 WS	Amount 2,837.0	Units lb	Sand Size 40/70	
11,544.9	11,352.0	11.9			25	9/12/2014	8,575.0	8,667.0	3258.60	3425.00
11,620.1	11,438.0	11.9			Additive Proppant	Type 20/40 WS	Amount 151,665.0	Units lb	Sand Size 20/40	
11,708.0	11,524.0	11.9			Additive Proppant	Type 40/70 WS				
11,779.9	11,610.0	11.9								
11,863.8	11,696.0	11.9								
11,937.0	11,782.0	11.9								
12,071.9	11,868.0	11.9								
12,169.9	11,954.0	11.9								
12,330.1	12,040.0	11.9								
12,393.0	12,126.0	11.9								
12,550.9	12,212.0	11.9								
12,648.9	12,298.0	11.9								
12,773.9	12,384.0	11.9								
12,903.9	12,470.0	11.9								
13,795.9	13,656.0	11.9								
13,887.1	13,742.0	11.9								
13,939.3	13,788.0	11.9								



Lease Review

Well Name: RAZOR FEDERAL 26L-2301A

API Number 051233798600	WPC ID 1CO0761030	Well Permit Number	Field Name DJ Horizontal Niobrara	County Weld	State CO
Well Configuration Type Lateral/Horizontal	Orig KB Elv (ft) 4,753.80	Ground Elevation (ft) 4,737.00	Casing Flange Elevation (ft)	Tubing Head Elevation (ft)	Total Depth (ftKB) 14,049.0
Original Spud Date 5/20/2014	Completion Date 9/14/2014	Asset Group Redtail	Responsible Engineer Charles Ohlson	N/S Dist (ft) 2,319.0	N/S Ref FSL
				E/W Dist (ft) 627.0	E/W Ref FWL
Lot	Quarter 1 NW	Quarter 2 SW	Quarter 3	Quarter 4	Section 26
					Section Suffix
					Section Type
					Township 10 N
					Township N/S Dir N
					Range 58 W
					Range E/W Dir W
					Meridian

Lateral/Horizontal - Original Hole, 12/11/2014 12:49:20 PM					
MD (ftKB)	D (ftKB)	nc l (ftKB)	Vertical schematic (actual)	Logs	
					Additive Proppant Type 40/70 WS Amount 2,877.0 Units Sand Size 40/70
					Stg # 26 Start Date 9/12/2014 Top Depth (ftKB) 8,395.0 Bottom Depth (ftKB) 8,487.0 Vol Clean Pump (bbl) 3260.20 Vol Slurry (bbl) 3426.90
96.8	96.8	1.4			Additive Proppant Type 20/40 WS Amount 152,123.0 Units Sand Size 20/40
1,540.0	1,528.8	11.2			Additive Proppant Type 40/70 WS Amount 2,744.0 Units Sand Size 40/70
3,587.9	3,544.8	43.1			Stg # 27 Start Date 9/12/2014 Top Depth (ftKB) 8,215.0 Bottom Depth (ftKB) 8,307.0 Vol Clean Pump (bbl) 3284.00 Vol Slurry (bbl) 3452.50
4,647.0	4,501.1	14.9			Additive Proppant Type 20/40 WS Amount 153,459.0 Units Sand Size 20/40
4,957.3	4,903.0	54.3			Additive Proppant Type 40/70 WS Amount 3,058.0 Units Sand Size 40/70
5,125.7	5,070.7	55.0			Stg # 28 Start Date 9/12/2014 Top Depth (ftKB) 8,037.0 Bottom Depth (ftKB) 8,127.0 Vol Clean Pump (bbl) 3290.00 Vol Slurry (bbl) 3456.00
5,423.9	5,392.2	31.7			Additive Proppant Type 20/40 WS Amount 151,782.0 Units Sand Size 20/40
6,020.0	5,913.4	106.6			Additive Proppant Type 40/70 WS Amount 2,437.0 Units Sand Size 40/70
6,279.9	6,104.4	175.5			Stg # 29 Start Date 9/13/2014 Top Depth (ftKB) 7,862.0 Bottom Depth (ftKB) 7,952.0 Vol Clean Pump (bbl) 3275.10 Vol Slurry (bbl) 3438.10
6,417.0	6,323.5	93.5			Additive Proppant Type 20/40 WS Amount 148,654.0 Units Sand Size 20/40
6,594.2	6,496.4	97.8			Additive Proppant Type 40/70 WS Amount 2,724.0 Units Sand Size 40/70
6,885.0	6,804.1	80.9			Stg # 30 Start Date 9/13/2014 Top Depth (ftKB) 7,675.0 Bottom Depth (ftKB) 7,762.0 Vol Clean Pump (bbl) 3288.40 Vol Slurry (bbl) 3455.20
6,885.2	6,805.4	79.8			Additive Proppant Type 20/40 WS Amount 152,430.0 Units Sand Size 20/40
7,002.0	6,955.2	46.8			Additive Proppant Type 40/70 WS Amount 2,521.0 Units Sand Size 40/70
7,180.1	7,085.8	94.3			Stg # 31 Start Date 9/13/2014 Top Depth (ftKB) 7,495.0 Bottom Depth (ftKB) 7,587.0 Vol Clean Pump (bbl) 3472.10 Vol Slurry (bbl) 3632.00
7,316.9	7,265.9	51.0			Additive Proppant Type 20/40 WS Amount 145,907.0 Units Sand Size 20/40
7,495.1	7,400.2	94.9			Additive Proppant Type 40/70 WS Amount 2,660.0 Units Sand Size 40/70
7,586.9	7,507.2	79.7			Stg # 32 Start Date 9/13/2014 Top Depth (ftKB) 7,315.0 Bottom Depth (ftKB) 7,407.0 Vol Clean Pump (bbl) 3248.80 Vol Slurry (bbl) 3411.90
7,759.8	7,665.9	93.9			Additive Proppant Type 20/40 WS Amount 149,030.0 Units Sand Size 20/40
7,907.2	7,806.0	101.2			Additive Proppant Type 40/70 WS Amount 2,470.0 Units Sand Size 40/70
8,082.0	8,011.0	71.0			Stg # 33 Start Date 9/13/2014 Top Depth (ftKB) 7,135.0 Bottom Depth (ftKB) 7,227.0 Vol Clean Pump (bbl) 3275.00 Vol Slurry (bbl) 3441.60
8,216.9	8,153.0	63.9			Additive Proppant Type 20/40 WS Amount 151,961.0 Units Sand Size 20/40
8,395.0	8,324.8	70.2			Additive Proppant Type 40/70 WS Amount 2,752.0 Units Sand Size 40/70
8,486.9	8,425.0	61.9			Stg # 34 Start Date 9/13/2014 Top Depth (ftKB) 6,955.0 Bottom Depth (ftKB) 7,047.0 Vol Clean Pump (bbl) 3245.10 Vol Slurry (bbl) 3411.80
8,665.0	8,604.8	60.2			Additive Proppant Type 20/40 WS Amount 152,199.0 Units Sand Size 20/40
8,801.8	8,741.0	60.8			Additive Proppant Type 40/70 WS Amount 2,683.0 Units Sand Size 40/70
8,980.0	8,923.8	56.2			Stg # 35 Start Date 9/14/2014 Top Depth (ftKB) 6,778.0 Bottom Depth (ftKB) 6,867.0 Vol Clean Pump (bbl) 3233.90 Vol Slurry (bbl) 3397.90
9,111.9	9,055.0	56.9			Additive Proppant Type 20/40 WS Amount 149,664.0 Units Sand Size 20/40
9,299.9	9,243.0	56.9			Additive Proppant Type 40/70 WS Amount 2,680.0 Units Sand Size 40/70
9,388.1	9,332.0	56.1			Stg # 36 Start Date 9/14/2014 Top Depth (ftKB) 6,594.0 Bottom Depth (ftKB) 6,685.0 Vol Clean Pump (bbl) 3251.20 Vol Slurry (bbl) 3417.80
9,565.0	9,509.8	55.2			Additive Proppant Type 20/40 WS Amount 152,046.0 Units Sand Size 20/40
9,702.1	9,646.8	55.3			Additive Proppant Type 40/70 WS Amount 2,713.0 Units Sand Size 40/70
9,879.9	9,825.8	54.1			Stg # 37 Start Date 9/14/2014 Top Depth (ftKB) 6,415.0 Bottom Depth (ftKB) 6,507.0 Vol Clean Pump (bbl) 3237.50 Vol Slurry (bbl) 3405.10
10,017.1	9,963.0	54.1			Additive Proppant Type 20/40 WS Amount 152,719.0 Units Sand Size 20/40
10,194.9	10,140.8	54.1			Additive Proppant Type 40/70 WS Amount 2,938.0 Units Sand Size 40/70
10,287.1	10,233.0	54.1			Stg # 38 Start Date 9/14/2014 Top Depth (ftKB) 6,240.0 Bottom Depth (ftKB) 6,327.0 Vol Clean Pump (bbl) 3242.80 Vol Slurry (bbl) 3410.40
10,464.9	10,410.8	54.1			Additive Proppant Type 20/40 WS Amount 152,888.0 Units Sand Size 20/40
10,598.1	10,544.0	54.1			Additive Proppant Type 40/70 WS Amount 2,787.0 Units Sand Size 40/70
10,792.0	10,737.9	54.1			
11,097.1	11,043.0	54.1			
11,274.9	11,220.8	54.1			
11,367.1	11,313.0	54.1			
11,544.9	11,490.8	54.1			
11,620.1	11,567.0	53.1			
11,708.0	11,643.0	54.1			
11,779.9	11,725.8	54.1			
11,863.8	11,809.7	54.1			
11,937.0	11,882.9	54.1			
12,071.9	12,017.8	54.1			
12,169.9	12,114.8	55.1			
12,330.1	12,281.9	54.1			
12,393.0	12,348.0	54.1			
12,550.9	12,507.0	53.1			
12,648.9	12,605.0	54.1			
12,773.9	12,731.0	54.1			
12,903.9	12,861.0	54.1			
13,795.9	13,753.0	54.1			
13,867.1	13,825.0	54.1			
13,939.3	13,897.0	54.1			

Tubing - Production set at 5,423.9ftKB on 10/16/2014 12:00

Set Depth (ftKB)	Comment	Run Date	Pull Date		
5,423.9		10/16/2014			
Item Des	OD (in)	ID (in)	Len (ft)	Top (ftKB)	Btm (ftKB)
Tubing Hanger			0.50	16.0	16.5
Tubing	2 7/8	2.441	1,698.53	16.5	1,715.0
Gas Lift Mandrel	2 7/8		4.05	1,715.0	1,719.1
Tubing	2 7/8	2.441	1,143.77	1,719.1	2,862.9
Gas Lift Mandrel	2 7/8		4.05	2,862.9	2,866.9
Tubing	2 7/8	2.441	720.90	2,866.9	3,587.8
Gas Lift Mandrel	2 7/8		4.05	3,587.8	3,591.9
Tubing	2 7/8	2.441	557.29	3,591.9	4,149.1
Gas Lift Mandrel	2 7/8		4.05	4,149.1	4,153.2



Lease Review

Well Name: RAZOR FEDERAL 26L-2301A

API Number 051233798600	WPC ID 1CO0761030	Well Permit Number	Field Name DJ Horizontal Niobrara	County Weld	State CO
Well Configuration Type Lateral/Horizontal	Orig KB Elv (ft) 4,753.80	Ground Elevation (ft) 4,737.00	Casing Flange Elevation (ft)	Tubing Head Elevation (ft)	Total Depth (ftKB) 14,049.0
Original Spud Date 5/20/2014	Completion Date 9/14/2014	Asset Group Redtail	Responsible Engineer Charles Ohlson	N/S Dist (ft) 2,319.0	N/S Ref FSL
				E/W Dist (ft) 627.0	E/W Ref FWL
Lot	Quarter 1 NW	Quarter 2 SW	Quarter 3	Quarter 4	Section 26
					Section Suffix
					Section Type
					Township 10 N
					Township N/S Dir N
					Range 58 W
					Range E/W Dir W
					Meridian

Lateral/Horizontal - Original Hole, 12/11/2014 12:49:22 PM

MD (ftKB)	D (ftKB)	n c l	Vertical schematic (actual)	Logs	Item Des	OD (in)	ID (in)	Len (ft)	Top (ftKB)	Btm (ftKB)
					Tubing	2 7/8	2.441	489.71	4,153.2	4,642.9
					Gas Lift Mandrel	2 7/8		4.05	4,642.9	4,647.0
					Tubing	2 7/8	2.441	164.02	4,647.0	4,811.0
					Seating Nipple	2 7/8		1.10	4,811.0	4,812.1
96.8	96.8	1.4			Cross Over 2 7/8 x 2 3/8	2 7/8		0.50	4,812.1	4,812.6
1,540.0	1,528.8	11.2			Tubing	2 3/8	1.995	309.18	4,812.6	5,121.8
3,587.9	3,544.8	43.1			Gas Lift Mandrel	2 3/8		4.05	5,121.8	5,125.8
4,647.0	4,593.1	53.9			Tubing	2 3/8	1.995	251.46	5,125.8	5,377.3
4,957.3	4,903.5	53.8			Gas Lift Mandrel	2 3/8		4.05	5,377.3	5,381.3
5,125.7	5,071.7	54.0			Tubing	2 3/8	1.995	31.23	5,381.3	5,412.5
5,423.9	5,381.2	42.7			On-Off Tool	2 3/8		1.34	5,412.5	5,413.9
6,020.0	5,974.4	45.6			Packer AS-1 w/ 4' 2 3/8 sub	2 3/8		10.00	5,413.9	5,423.9

Rod Strings				
<des> on <dtmrun>				
Rod Description		Run Date	Pull Date	
Item Des	OD (in)	Len (ft)	Top (ftKB)	Btm (ftKB)

Other Strings				
Set Depth (ftKB)	Comment	Run Date	Pull Date	
Item Des	OD (in)	Len (ft)	Top (ftKB)	Btm (ftKB)

Other In Hole					
Des	OD (in)	Run Date	Pull Date	Top (ftKB)	Btm (ftKB)
CFP	4	9/14/2014	10/3/2014	6,365.0	6,367.0
CFP	4	9/14/2014	10/3/2014	6,540.0	6,542.0
CFP	4	9/14/2014	10/3/2014	6,740.0	6,742.0
CFP	4	9/14/2014	10/3/2014	6,910.0	6,912.0
CFP	4	9/14/2014	10/3/2014	7,090.0	7,092.0
CFP	4	9/13/2014	10/3/2014	7,270.0	7,272.0
CFP	4	9/13/2014	10/3/2014	7,450.0	7,452.0
CFP	4	9/13/2014	10/3/2014	7,630.0	7,632.0
CFP	4	9/13/2014	10/3/2014	7,800.0	7,802.0
CFP	4	9/13/2014	10/3/2014	8,000.0	8,002.0
CFP	4	9/13/2014	10/3/2014	8,172.0	8,174.0
CFP	4	9/12/2014	10/3/2014	8,348.0	8,350.0
CFP	4	9/12/2014	10/3/2014	8,530.0	8,532.0
CFP	4	9/12/2014	10/3/2014	8,710.0	8,712.0
CFP	4	9/12/2014	10/3/2014	8,890.0	8,892.0
CFP	4	9/11/2014	10/3/2014	9,058.0	9,060.0
CFP	4	9/11/2014	10/3/2014	9,256.0	9,258.0
CFP	4	9/11/2014	10/3/2014	9,434.0	9,436.0
CFP	4	9/11/2014	10/3/2014	9,610.0	9,612.0
CFP	4	9/10/2014	10/3/2014	9,790.0	9,792.0
CFP	4	9/10/2014	10/3/2014	9,970.0	9,972.0
CFP	4	9/10/2014	10/3/2014	10,150.0	10,152.0
CFP	4	9/10/2014	10/3/2014	10,330.0	10,332.0
CFP	4	9/9/2014	10/3/2014	10,510.0	10,512.0
CFP	4	9/9/2014	10/3/2014	10,703.0	10,705.0
CFP	4	9/9/2014	10/3/2014	10,880.0	10,882.0
CFP	4	9/9/2014	10/3/2014	11,230.0	11,232.0
CFP	4	9/8/2014	10/3/2014	11,410.0	11,412.0
CFP	4	9/8/2014		11,580.0	11,582.0
CFP	4	9/8/2014		11,708.0	11,710.0
CFP	4	9/8/2014		11,840.0	11,842.0
CFP	4	9/8/2014		11,960.0	11,962.0
CFP	4	9/7/2014		12,168.0	12,170.0
CFP	4	9/7/2014		12,350.0	12,352.0
CFP	4	9/7/2014		12,551.0	12,553.0
CFP	4	9/7/2014		12,735.0	12,737.0
CFP	4	9/6/2014		12,934.0	12,936.0

Bottom Hole Cores				
Date	Core #	Top (ftKB)	Btm (ftKB)	Recov (ft)

