

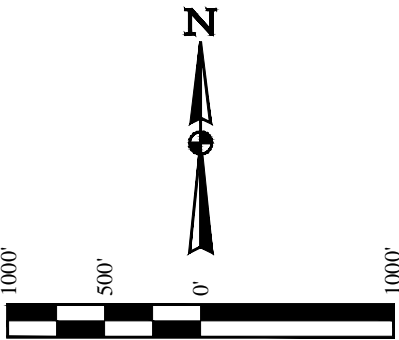
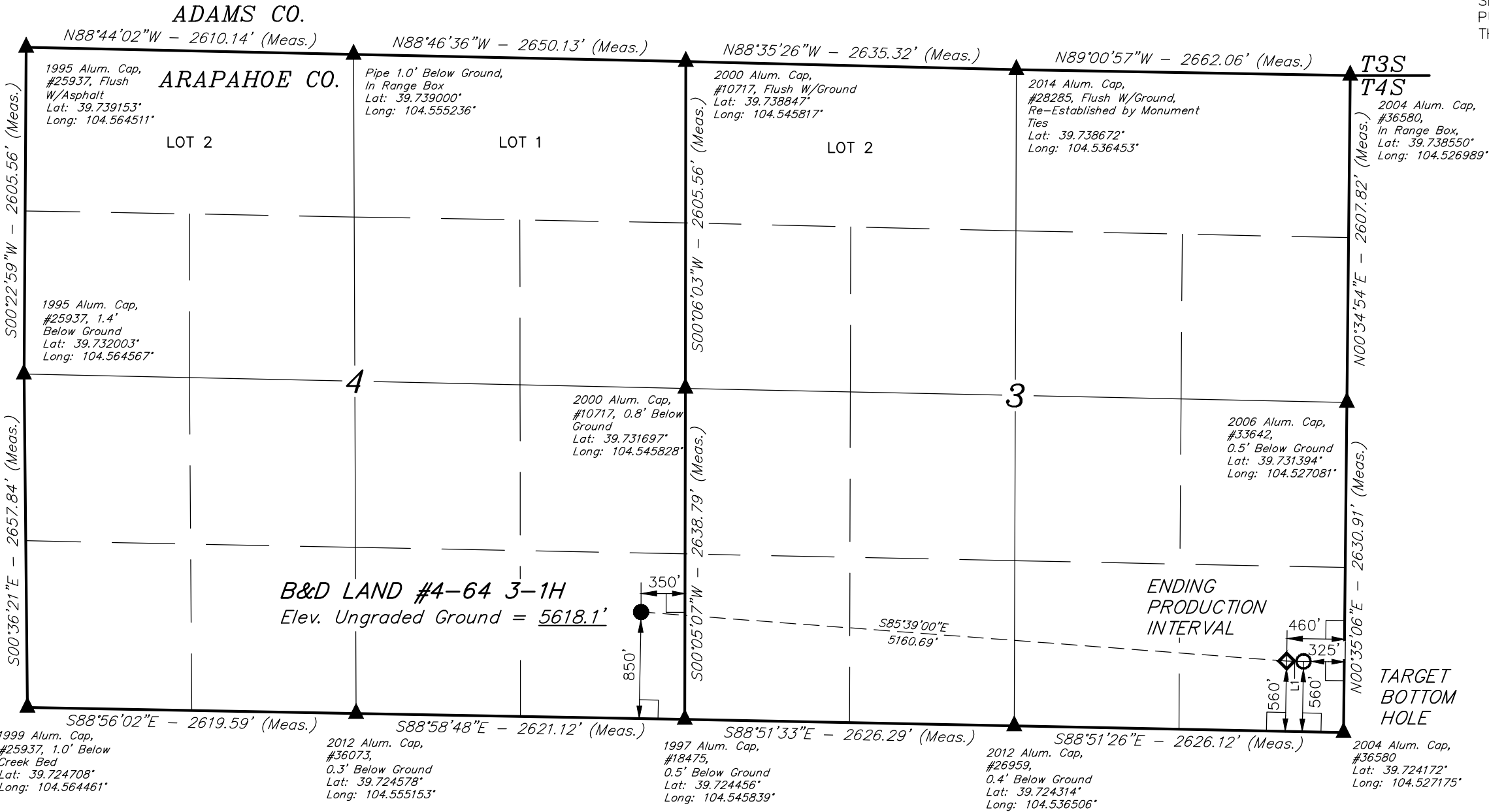
T4S, R64W, 6th P.M.

ConocoPhillips Company

B&D LAND #4-64 3-1H
SE 1/4 SE 1/4, SECTION 4, T4S, R64W, 6th P.M.
ARAPAHOE COUNTY, COLORADO

BASIS OF BEARINGS
BASIS OF ELEVATION

BENCHMARK 374 LOCATED ON THE SECTION LINE BETWEEN SECTIONS 12 & 13, T5S, R64W, 6th. P.M., TAKEN FROM 1988 PUBLISHED DATUM BY THE UNITED STATES DEPARTMENT OF THE INTERIOR, GEOLOGICAL SURVEY AS BEING 6054.61 FEET.



LINE TABLE		
LINE	DIRECTION	LENGTH
L1	S88°51'26"E	135.01'

CERTIFICATE

THIS IS TO CERTIFY THAT THE ABOVE PLAT WAS PREPARED FROM FIELD NOTES OF ACTUAL SURVEYS MADE BY ME OR UNDER MY SUPERVISION, AND THAT THE SAME ARE TRUE AND CORRECT TO THE BEST OF MY KNOWLEDGE AND BELIEF.

REGISTERED LAND SURVEYOR
REGISTRATION NO. 28285
STATE OF COLORADO

05-29-14

PDOP = 1.7

LEGEND:

- 90° SYMBOL
- PROPOSED WELLHEAD.
- TARGET BOTTOM HOLE.
- SECTION CORNERS LOCATED.
- PRODUCTION INTERVAL.

NAD 83 (TARGET BOTTOM HOLE)	NAD 83 (ENDING PRODUCTION INTERVAL)	NAD 83 (SURFACE LOCATION)
LATITUDE = 39°43'32.62" (39.725728)	LATITUDE = 39°43'32.64" (39.725733)	LATITUDE = 39°43'36.49" (39.726803)
LONGITUDE = 104°31'41.92" (104.528311)	LONGITUDE = 104°31'43.64" (104.528789)	LONGITUDE = 104°32'49.48" (104.547078)
NAD 27 (TARGET BOTTOM HOLE)	NAD 27 (ENDING PRODUCTION INTERVAL)	NAD 27 (SURFACE LOCATION)
LATITUDE = 39°43'32.67" (39.725742)	LATITUDE = 39°43'32.69" (39.725747)	LATITUDE = 39°43'36.54" (39.726817)
LONGITUDE = 104°31'40.04" (104.527789)	LONGITUDE = 104°31'41.77" (104.528269)	LONGITUDE = 104°32'47.61" (104.546558)
STATE PLANE NAD 83	STATE PLANE NAD 83	STATE PLANE NAD 83
N: 1690687.19 E: 3273311.16	N: 1690688.39 E: 3273176.20	N: 1691023.45 E: 3268028.04
STATE PLANE NAD 27	STATE PLANE NAD 27	STATE PLANE NAD 27
N: 690679.98 E: 2273464.40	N: 690681.18 E: 2273329.44	N: 691016.16 E: 2268181.33



UELS, LLC
Corporate Office * 85 South 200 East
Vernal, UT 84078 * (435) 789-1017

SURVEYED BY: DARREN SHANKS, DMS		DATE: 05-29-14
DRAWN BY: K.B.		DATE DRAWN: 06-10-14
SCALE: 1" = 1000'		REVISED: 00-00-00
WELL LOCATION PLAT		

T4S, R64W, 6th P.M.

ConocoPhillips Company

B&D LAND #4-64 3-1H
SE 1/4 SE 1/4, SECTION 4, T4S, R64W, 6th P.M.
ARAPAHOE COUNTY, COLORADO

BASIS OF BEARINGS

BASIS OF BEARINGS IS A G.P.S. OBSERVATION

BASIS OF ELEVATION

BENCHMARK 374 LOCATED ON THE SECTION LINE BETWEEN SECTIONS 12 & 13, T5S, R64W, 6th. P.M., TAKEN FROM 1988 PUBLISHED DATUM BY THE UNITED STATES DEPARTMENT OF THE INTERIOR, GEOLOGICAL SURVEY AS BEING 6054.61 FEET.

1995 Alum. Cap,
#25937, Flush
W/Asphalt
Lat: 39.739153°
Long: 104.564511°

ADAMS CO.

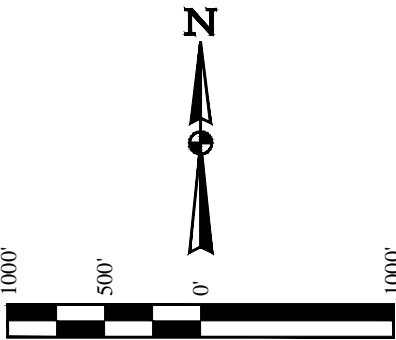
Pipe 1.0' Below Ground,
In Range Box
Lat: 39.739000°
Long: 104.555236°

2000 Alum. Cap,
#10717, Flush W/Ground
Lat: 39.738847°
Long: 104.545817°

2014 Alum. Cap,
#28285, Flush W/Ground,
Re-Established by Monument
Ties
Lat: 39.738672°
Long: 104.536453°

T3S
T4S

2004 Alum. Cap,
#36580,
In Range Box,
Lat: 39.738550°
Long: 104.526989°



LINE TABLE		
LINE	DIRECTION	LENGTH
L1	S88°51'26"E	135.01'

ENDING
PRODUCTION
INTERVAL
560' FSL
460' FEL

TARGET
BOTTOM
HOLE
560' FSL
325' FEL

CERTIFICATE

THIS IS TO CERTIFY THAT THE ABOVE PLAT WAS PREPARED FROM FIELD NOTES OF ACTUAL SURVEYS MADE BY ME OR UNDER MY SUPERVISION, AND THAT THE SAME ARE TRUE AND CORRECT TO THE BEST OF MY KNOWLEDGE AND BELIEF.

REGISTERED LAND SURVEYOR
REGISTRATION NO. 28285
STATE OF COLORADO

07-30-14

PDOP = 1.7

LEGEND:

- 90° SYMBOL
- PROPOSED WELLHEAD.
- TARGET BOTTOM HOLE.
- SECTION CORNERS LOCATED.
- PRODUCTION INTERVAL.

NAD 83 (TARGET BOTTOM HOLE)	NAD 83 (ENDING PRODUCTION INTERVAL)	NAD 83 (SURFACE LOCATION)
LATITUDE = 39°43'32.62" (39.725728)	LATITUDE = 39°43'32.64" (39.725733)	LATITUDE = 39°43'36.49" (39.726803)
LONGITUDE = 104°31'41.92" (104.528311)	LONGITUDE = 104°31'43.64" (104.528789)	LONGITUDE = 104°32'49.48" (104.547078)
NAD 27 (TARGET BOTTOM HOLE)	NAD 27 (ENDING PRODUCTION INTERVAL)	NAD 27 (SURFACE LOCATION)
LATITUDE = 39°43'32.67" (39.725742)	LATITUDE = 39°43'32.69" (39.725747)	LATITUDE = 39°43'36.54" (39.726817)
LONGITUDE = 104°31'40.04" (104.527789)	LONGITUDE = 104°31'41.77" (104.528269)	LONGITUDE = 104°32'47.61" (104.546558)
STATE PLANE NAD 83	STATE PLANE NAD 83	STATE PLANE NAD 83
N: 1690687.19 E: 3273311.16	N: 1690688.39 E: 3273176.20	N: 1691023.45 E: 3268028.04
STATE PLANE NAD 27	STATE PLANE NAD 27	STATE PLANE NAD 27
N: 690679.98 E: 2273464.40	N: 690681.18 E: 2273329.44	N: 691016.16 E: 2268181.33



UELS, LLC
Corporate Office * 85 South 200 East
Vernal, UT 84078 * (435) 789-1017

SURVEYED BY: DARREN SHANKS, DMS	DATE: 05-29-14
DRAWN BY: K.B.	DATE DRAWN: 06-10-14
SCALE: 1" = 1000'	REVISED: 00-00-00

SECTION BREAKDOWN