

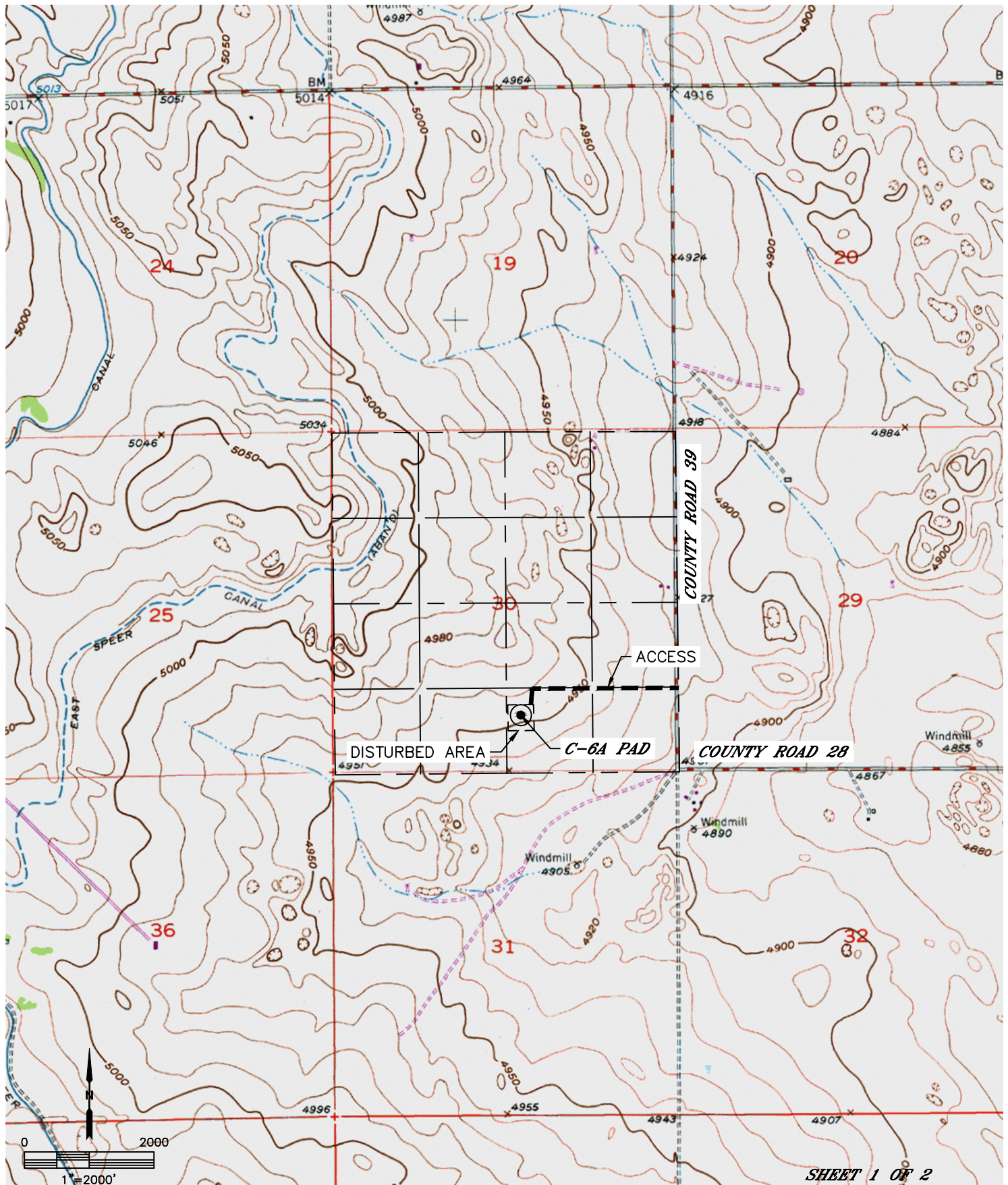


Lat40°, Inc. 6250 W. 10th Street, Unit 2, Greeley, CO 970-515-5294

ACCESS ROAD MAP

C-6A PAD

SECTION: 30
TOWNSHIP: 3N
RANGE: 65W
6TH. P.M.
WELD COUNTY, CO



SHEET 1 OF 2

DATE: 11/7/2014
PROJECT#: 2014205

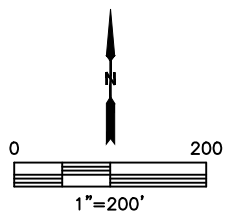


Lat40°, Inc. 6250 W. 10th Street, Unit 2, Greeley, CO 970-515-5294

ACCESS ROAD MAP

C-6A PAD

SECTION: 30
TOWNSHIP: 3N
RANGE: 65W
6TH. P.M.
WELD COUNTY, CO



SHEET 2 OF 2

DATE: 11/7/2014
PROJECT#: 2014205