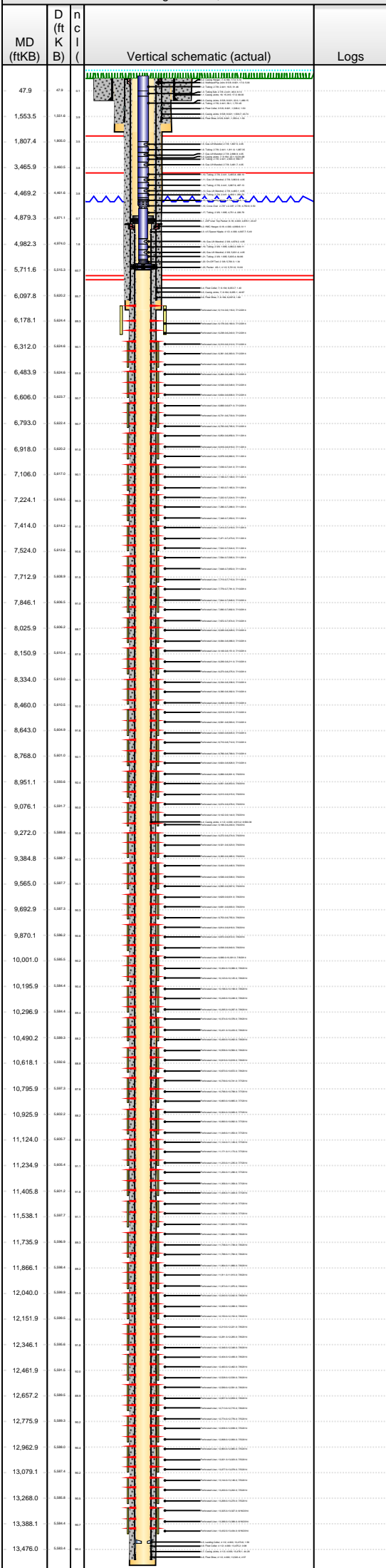




Lease Review All - Frac Summary
Well Name: RAZOR FEDERAL 26J-2309A

API Number 051233804400		WPC ID 1CO0761020		Well Permit Number		Field Name DJ Horizontal Niobrara		County Weld		State CO	
Well Configuration Type Lateral/Horizontal		Orig KB Elv (ft) 4,742.60		Ground Elevation (ft) 4,725.60		Casing Flange Elevation (ft)		Tubing Head Elevation (ft)		Total Depth (ftKB) 13,533.0	
Original Spud Date 5/4/2014		Completion Date 7/12/2014		Asset Group Redtail		Responsible Engineer Andrew Fish		N/S Dist (ft) 2,326.0		N/S Ref FSL	E/W Dist (ft) 1,980.0 E/W Ref FEL
Lot		Quarter 1 NW	Quarter 2 SE	Quarter 3	Quarter 4	Section 26	Section Suffix	Section Type	Township 10 N	Township N/S Dir	Range 58 W Meridian

Lateral/Horizontal - Original Hole, 12/10/2014 2:26:43 PM



Wellbore Sections						
Wellbore Name		Start Date	Size (in)	Act Top (ftKB)	Act Btm (ftKB)	
Original Hole		1/22/2014	24	17.0	97.0	
Original Hole		5/4/2014	13 1/2	97.0	1,564.0	
Original Hole		5/6/2014	8 3/4	1,564.0	6,115.0	
Original Hole		5/10/2014	6 1/8	6,115.0	13,533.0	
Conductor Pipe, 97.0ftKB						
OD (in)	Wt (lb/ft)	Grade	Top (ftKB)	Btm (ftKB)	Len (ft)	Item Des
16	84.00	K-55	17.0	97.0	80.00	Casing Joints
Surface Csg, 1,554.9ftKB						
OD (in)	Wt (lb/ft)	Grade	Top (ftKB)	Btm (ftKB)	Len (ft)	Item Des
9 5/8	36.00	J-55	17.0	17.0	0.00	Landing Joint
9 5/8	36.00	J-55	17.0	22.0	5.00	Wellhead/Pup Joint
9 5/8	36.00	J-55	22.0	1,508.2	1,486.15	Casing Joints
9 5/8	36.00	J-55	1,508.2	1,509.7	1.50	Float Collar
9 5/8	36.00	J-55	1,509.7	1,553.4	43.74	Casing Joints
9 5/8	36.00	J-55	1,553.4	1,554.9	1.50	Float Shoe
Intermediate Csg, 6,099.4ftKB						
OD (in)	Wt (lb/ft)	Grade	Top (ftKB)	Btm (ftKB)	Len (ft)	Item Des
7	29.00	HCL-80	17.0	17.0	0.00	Landing Joint
7	29.00	HCL-80	17.0	22.1	5.10	Casing Hanger
7	29.00	HCL-80	22.1	6,053.7	6,031.68	Casing Joints
7	29.00	HCL-80	6,053.7	6,055.1	1.40	Float Collar
7	29.00	HCL-80	6,055.1	6,097.8	42.67	Casing Joints
7	29.00	HCL-80	6,097.8	6,099.4	1.60	Float Shoe
Liner, 13,523.0ftKB						
OD (in)	Wt (lb/ft)	Grade	Top (ftKB)	Btm (ftKB)	Len (ft)	Item Des
6.184	11.60	L-80	4,879.1	4,899.6	20.47	ZXP Liner Top Packer
6.184	11.60	L-80	4,899.6	4,907.7	8.11	HMC Hanger
4 1/2	11.60	L-80	4,907.7	4,913.2	5.49	4.5 Spacer Nipple
4 1/2	11.60	L-80	4,913.2	13,473.6	8,560.38	Casing Joints
4 1/2	11.60	L-80	13,473.6	13,475.2	1.59	Landing Collar
4 1/2	11.60	L-80	13,475.2	13,476.1	0.98	Float Collar
4 1/2	11.60	L-80	13,476.1	13,520.4	44.29	Casing Joints
4 1/2	11.60	L-80	13,520.4	13,523.0	2.57	Float Shoe
Cement Stages						
Des	Pump Start Date	Drill Out Date	Top (ftKB)	Btm (ftKB)	Top Meas Meth	
Conductor Cement	1/22/2014		17.0	97.0		
Surface Casing Cement	5/5/2014		17.0	1,555.0	Returns to Surface	
Intermediate Casing Cement	5/9/2014		17.0	6,099.4	Returns to Surface	
Liner Cement	5/18/2014		4,879.1	13,523.0	Returns to Surface	
Perforations						
Type of Hole		Date	Top (ftKB)	Btm (ftKB)	Zone	
Perforated Liner		7/12/2014	6,114.0	6,116.0	Niobrara, Original Hole	
Perforated Liner		7/12/2014	6,178.0	6,180.0	Niobrara, Original Hole	
Perforated Liner		7/12/2014	6,238.0	6,240.0	Niobrara, Original Hole	
Perforated Liner		7/12/2014	6,310.0	6,312.0	Niobrara, Original Hole	
Perforated Liner		7/12/2014	6,361.0	6,363.0	Niobrara, Original Hole	
Perforated Liner		7/12/2014	6,423.0	6,425.0	Niobrara, Original Hole	
Perforated Liner		7/12/2014	6,484.0	6,486.0	Niobrara, Original Hole	
Perforated Liner		7/12/2014	6,546.0	6,548.0	Niobrara, Original Hole	
Perforated Liner		7/12/2014	6,604.0	6,606.0	Niobrara, Original Hole	
Perforated Liner		7/12/2014	6,669.0	6,671.0	Niobrara, Original Hole	
Perforated Liner		7/12/2014	6,731.0	6,733.0	Niobrara, Original Hole	
Perforated Liner		7/12/2014	6,793.0	6,795.0	Niobrara, Original Hole	
Perforated Liner		7/11/2014	6,854.0	6,856.0	Niobrara, Original Hole	
Perforated Liner		7/11/2014	6,916.0	6,918.0	Niobrara, Original Hole	
Perforated Liner		7/11/2014	6,978.0	6,980.0	Niobrara, Original Hole	
Perforated Liner		7/11/2014	7,039.0	7,041.0	Niobrara, Original Hole	
Perforated Liner		7/11/2014	7,106.0	7,108.0	Niobrara, Original Hole	
Perforated Liner		7/11/2014	7,163.0	7,165.0	Niobrara, Original Hole	
Perforated Liner		7/11/2014	7,222.0	7,224.0	Niobrara, Original Hole	
Perforated Liner		7/11/2014	7,286.0	7,288.0	Niobrara, Original Hole	
Perforated Liner		7/11/2014	7,348.0	7,350.0	Niobrara, Original Hole	
Perforated Liner		7/11/2014	7,414.0	7,416.0	Niobrara, Original Hole	
Perforated Liner		7/11/2014	7,471.0	7,473.0	Niobrara, Original Hole	
Perforated Liner		7/11/2014	7,522.0	7,524.0	Niobrara, Original Hole	
Perforated Liner		7/11/2014	7,594.0	7,595.0	Niobrara, Original Hole	
Perforated Liner		7/11/2014	7,648.0	7,650.0	Niobrara, Original Hole	
Perforated Liner		7/11/2014	7,713.0	7,715.0	Niobrara, Original Hole	
Perforated Liner		7/10/2014	7,779.0	7,781.0	Niobrara, Original Hole	
Perforated Liner		7/10/2014	7,844.0	7,846.0	Niobrara, Original Hole	



Lease Review All - Frac Summary
Well Name: RAZOR FEDERAL 26J-2309A

API Number 051233804400		WPC ID 1CO0761020			Well Permit Number			Field Name DJ Horizontal Niobrara			County Weld		State CO
Well Configuration Type Lateral/Horizontal				Orig KB Elv (ft) 4,742.60		Ground Elevation (ft) 4,725.60		Casing Flange Elevation (ft)		Tubing Head Elevation (ft)		Total Depth (ftKB) 13,533.0	
Original Spud Date 5/4/2014		Completion Date 7/12/2014		Asset Group Redtail			Responsible Engineer Andrew Fish			N/S Dist (ft) 2,326.0	N/S Ref FSL	E/W Dist (ft) 1,980.0	E/W Ref FEL
Lot	Quarter 1 NW	Quarter 2 SE	Quarter 3	Quarter 4	Section 26	Section Suffix	Section Type	Township 10	Township N/S Dir N	Range 58	Range E/W Dir W	Meridian	

Lateral/Horizontal - Original Hole, 12/10/2014 2:26:45 PM						Perforations				
MD (ftKB)	D (ft K B)	n c l (Vertical schematic (actual)	Logs	Type of Hole		Date	Top (ftKB)	Btm (ftKB)	Zone
					Perforated Liner		7/10/2014	7,890.0	7,892.0	Niobrara, Original Hole
					Perforated Liner		7/10/2014	7,972.0	7,974.0	Niobrara, Original Hole
					Perforated Liner		7/10/2014	8,026.0	8,028.0	Niobrara, Original Hole
					Perforated Liner		7/10/2014	8,084.0	8,086.0	Niobrara, Original Hole
47.9	47.9	121			Perforated Liner		7/10/2014	8,149.0	8,151.0	Niobrara, Original Hole
1,553.5	1,553.5	124			Perforated Liner		7/10/2014	8,209.0	8,211.0	Niobrara, Original Hole
1,807.4	1,807.4	124			Perforated Liner		7/10/2014	8,273.0	8,275.0	Niobrara, Original Hole
3,465.9	3,465.9	124			Perforated Liner		7/10/2014	8,334.0	8,336.0	Niobrara, Original Hole
4,469.2	4,469.2	124			Perforated Liner		7/10/2014	8,390.0	8,392.0	Niobrara, Original Hole
4,879.3	4,879.3	127			Perforated Liner		7/10/2014	8,458.0	8,460.0	Niobrara, Original Hole
4,982.3	4,982.3	124			Perforated Liner		7/10/2014	8,519.0	8,521.0	Niobrara, Original Hole
5,711.6	5,711.6	127			Perforated Liner		7/10/2014	8,581.0	8,583.0	Niobrara, Original Hole
6,097.8	6,097.8	127			Perforated Liner		7/10/2014	8,643.0	8,645.0	Niobrara, Original Hole
6,178.1	6,178.1	127			Perforated Liner		7/10/2014	8,710.0	8,712.0	Niobrara, Original Hole
6,312.0	6,312.0	127			Perforated Liner		7/10/2014	8,766.0	8,768.0	Niobrara, Original Hole
6,483.9	6,483.9	124			Perforated Liner		7/10/2014	8,824.0	8,826.0	Niobrara, Original Hole
6,606.0	6,606.0	127			Perforated Liner		7/9/2014	8,889.0	8,891.0	Niobrara, Original Hole
6,793.0	6,793.0	127			Perforated Liner		7/9/2014	8,951.0	8,953.0	Niobrara, Original Hole
6,918.0	6,918.0	127			Perforated Liner		7/9/2014	9,013.0	9,015.0	Niobrara, Original Hole
7,106.0	7,106.0	127			Perforated Liner		7/9/2014	9,074.0	9,076.0	Niobrara, Original Hole
7,224.1	7,224.1	124			Perforated Liner		7/9/2014	9,142.0	9,144.0	Niobrara, Original Hole
7,414.0	7,414.0	124			Perforated Liner		7/9/2014	9,198.0	9,200.0	Niobrara, Original Hole
7,524.0	7,524.0	124			Perforated Liner		7/9/2014	9,272.0	9,274.0	Niobrara, Original Hole
7,712.9	7,712.9	124			Perforated Liner		7/9/2014	9,321.0	9,323.0	Niobrara, Original Hole
7,846.1	7,846.1	124			Perforated Liner		7/9/2014	9,383.0	9,385.0	Niobrara, Original Hole
8,025.9	8,025.9	127			Perforated Liner		7/9/2014	9,444.0	9,446.0	Niobrara, Original Hole
8,150.9	8,150.9	124			Perforated Liner		7/9/2014	9,506.0	9,508.0	Niobrara, Original Hole
8,334.0	8,334.0	124			Perforated Liner		7/9/2014	9,565.0	9,567.0	Niobrara, Original Hole
8,460.0	8,460.0	124			Perforated Liner		7/8/2014	9,629.0	9,631.0	Niobrara, Original Hole
8,643.0	8,643.0	124			Perforated Liner		7/8/2014	9,691.0	9,693.0	Niobrara, Original Hole
8,768.0	8,768.0	121			Perforated Liner		7/8/2014	9,753.0	9,755.0	Niobrara, Original Hole
8,951.1	8,951.1	124			Perforated Liner		7/8/2014	9,753.0	9,755.0	Niobrara, Original Hole
9,076.1	9,076.1	124			Perforated Liner		7/8/2014	9,814.0	9,816.0	Niobrara, Original Hole
9,272.0	9,272.0	124			Perforated Liner		7/8/2014	9,870.0	9,872.0	Niobrara, Original Hole
9,384.8	9,384.8	124			Perforated Liner		7/8/2014	9,938.0	9,940.0	Niobrara, Original Hole
9,565.0	9,565.0	124			Perforated Liner		7/8/2014	9,999.0	10,001.0	Niobrara, Original Hole
9,692.9	9,692.9	124			Perforated Liner		7/8/2014	10,064.0	10,066.0	Niobrara, Original Hole
9,870.1	9,870.1	124			Perforated Liner		7/8/2014	10,123.0	10,125.0	Niobrara, Original Hole
10,001.0	10,001.0	124			Perforated Liner		7/8/2014	10,196.0	10,198.0	Niobrara, Original Hole
10,195.9	10,195.9	124			Perforated Liner		7/8/2014	10,246.0	10,248.0	Niobrara, Original Hole
10,296.9	10,296.9	124			Perforated Liner		7/8/2014	10,295.0	10,297.0	Niobrara, Original Hole
10,490.2	10,490.2	124			Perforated Liner		7/8/2014	10,374.0	10,376.0	Niobrara, Original Hole
10,618.1	10,618.1	124			Perforated Liner		7/8/2014	10,431.0	10,433.0	Niobrara, Original Hole
10,795.9	10,795.9	124			Perforated Liner		7/8/2014	10,490.0	10,492.0	Niobrara, Original Hole
10,925.9	10,925.9	124			Perforated Liner		7/8/2014	10,558.0	10,560.0	Niobrara, Original Hole
11,124.0	11,124.0	124			Perforated Liner		7/8/2014	10,616.0	10,618.0	Niobrara, Original Hole
11,234.9	11,234.9	124			Perforated Liner		7/8/2014	10,670.0	10,672.0	Niobrara, Original Hole
11,405.8	11,405.8	124			Perforated Liner		7/7/2014	10,739.0	10,741.0	Niobrara, Original Hole
11,538.1	11,538.1	124			Perforated Liner		7/7/2014	10,796.0	10,798.0	Niobrara, Original Hole
11,735.9	11,735.9	124			Perforated Liner		7/7/2014	10,863.0	10,865.0	Niobrara, Original Hole
11,866.1	11,866.1	124			Perforated Liner		7/7/2014	10,924.0	10,926.0	Niobrara, Original Hole
12,040.0	12,040.0	124			Perforated Liner		7/7/2014	10,990.0	10,992.0	Niobrara, Original Hole
12,151.9	12,151.9	124			Perforated Liner		7/7/2014	11,048.0	11,050.0	Niobrara, Original Hole
12,346.1	12,346.1	124			Perforated Liner		7/7/2014	11,124.0	11,126.0	Niobrara, Original Hole
12,461.9	12,461.9	124			Perforated Liner		7/7/2014	11,171.0	11,173.0	Niobrara, Original Hole
12,657.2	12,657.2	124			Perforated Liner		7/7/2014	11,233.0	11,235.0	Niobrara, Original Hole
12,775.9	12,775.9	124			Perforated Liner		7/7/2014	11,294.0	11,296.0	Niobrara, Original Hole
12,962.9	12,962.9	124			Perforated Liner		7/7/2014	11,356.0	11,358.0	Niobrara, Original Hole
13,079.1	13,079.1	124			Perforated Liner		7/7/2014	11,406.0	11,408.0	Niobrara, Original Hole
13,268.0	13,268.0	124			Perforated Liner		7/7/2014	11,479.0	11,481.0	Niobrara, Original Hole
13,388.1	13,388.1	124			Perforated Liner		7/7/2014	11,536.0	11,538.0	Niobrara, Original Hole
13,476.0	13,476.0	124			Perforated Liner		7/7/2014	11,603.0	11,605.0	Niobrara, Original Hole
					Perforated Liner		7/6/2014	11,664.0	11,666.0	Niobrara, Original Hole
					Perforated Liner		7/6/2014	11,736.0	11,738.0	Niobrara, Original Hole
					Perforated Liner		7/6/2014	11,788.0	11,790.0	Niobrara, Original Hole
					Perforated Liner		7/6/2014	11,864.0	11,866.0	Niobrara, Original Hole
					Perforated Liner		7/6/2014	11,911.0	11,913.0	Niobrara, Original Hole
					Perforated Liner		7/6/2014	11,973.0	11,975.0	Niobrara, Original Hole
					Perforated Liner		7/6/2014	12,040.0	12,042.0	Niobrara, Original Hole
					Perforated Liner		7/6/2014	12,096.0	12,098.0	Niobrara, Original Hole
					Perforated Liner		7/6/2014	12,150.0	12,152.0	Niobrara, Original Hole



Lateral/Horizontal - Original Hole - 21/10/2014 2:26:47 PM			Perforations						
MD (ftKB)	D (ft KB)	n c l (Vertical schematic (actual)	Logs	Type of Hole	Date	Top (ftKB)	Btm (ftKB)	Zone
47.9	679	51			Perforated Liner	7/6/2014	12,219.0	12,221.0	Niobrara, Original Hole
1,553.5	1,581.0	19		Perforated Liner	7/6/2014	12,281.0	12,283.0	Niobrara, Original Hole	
1,807.4	1,860.0	19		Perforated Liner	7/6/2014	12,346.0	12,348.0	Niobrara, Original Hole	
3,465.9	3,480.0	19		Perforated Liner	7/6/2014	12,404.0	12,406.0	Niobrara, Original Hole	
4,469.2	4,480.0	19		Perforated Liner	7/6/2014	12,460.0	12,462.0	Niobrara, Original Hole	
4,879.3	4,880.0	19		Perforated Liner	7/6/2014	12,528.0	12,530.0	Niobrara, Original Hole	
4,982.3	4,980.0	19		Perforated Liner	7/6/2014	12,589.0	12,591.0	Niobrara, Original Hole	
5,711.6	5,710.0	19		Perforated Liner	7/6/2014	12,657.0	12,659.0	Niobrara, Original Hole	
6,097.8	6,090.0	19		Perforated Liner	7/6/2014	12,713.0	12,715.0	Niobrara, Original Hole	
6,178.1	6,170.0	19		Perforated Liner	7/5/2014	12,774.0	12,776.0	Niobrara, Original Hole	
6,312.0	6,310.0	19		Perforated Liner	7/5/2014	12,836.0	12,838.0	Niobrara, Original Hole	
6,483.9	6,480.0	19		Perforated Liner	7/5/2014	12,898.0	12,900.0	Niobrara, Original Hole	
6,606.0	6,600.0	19		Perforated Liner	7/5/2014	12,963.0	12,965.0	Niobrara, Original Hole	
6,793.0	6,790.0	19		Perforated Liner	7/5/2014	13,021.0	13,023.0	Niobrara, Original Hole	
6,918.0	6,910.0	19		Perforated Liner	7/5/2014	13,077.0	13,079.0	Niobrara, Original Hole	
7,106.0	7,100.0	19		Perforated Liner	7/5/2014	13,144.0	13,146.0	Niobrara, Original Hole	
7,224.1	7,220.0	19		Perforated Liner	7/5/2014	13,200.0	13,202.0	Niobrara, Original Hole	
7,414.0	7,410.0	19		Perforated Liner	7/5/2014	13,268.0	13,270.0	Niobrara, Original Hole	
7,524.0	7,520.0	19		Perforated Liner	6/16/2014	13,325.0	13,327.0	Niobrara, Original Hole	
7,712.9	7,710.0	19		Perforated Liner	6/16/2014	13,386.0	13,388.0	Niobrara, Original Hole	
7,846.1	7,840.0	19	Perforated Liner	6/16/2014	13,432.0	13,434.0	Niobrara, Original Hole		
8,025.9	8,020.0	19							
8,150.9	8,150.0	19							
8,334.0	8,330.0	19							
8,460.0	8,460.0	19							
8,643.0	8,640.0	19							
8,768.0	8,760.0	19							
8,951.1	8,950.0	19							
9,076.1	9,070.0	19							
9,272.0	9,270.0	19							
9,384.8	9,380.0	19							
9,565.0	9,560.0	19							
9,692.9	9,690.0	19							
9,870.1	9,870.0	19							
10,001.0	10,000.0	19							
10,195.9	10,190.0	19							
10,296.9	10,290.0	19							
10,490.2	10,490.0	19							
10,618.1	10,610.0	19							
10,795.9	10,790.0	19							
10,925.9	10,920.0	19							
11,124.0	11,120.0	19							
11,234.9	11,230.0	19							
11,405.8	11,400.0	19							
11,538.1	11,530.0	19							
11,735.9	11,730.0	19							
11,866.1	11,860.0	19							
12,040.0	12,040.0	19							
12,151.9	12,150.0	19							
12,346.1	12,340.0	19							
12,461.9	12,460.0	19							
12,657.2	12,650.0	19							
12,775.9	12,770.0	19							
12,962.9	12,960.0	19							
13,079.1	13,070.0	19							
13,268.0	13,260.0	19							
13,388.1	13,380.0	19							
13,476.0	13,470.0	19							



Lease Review All - Frac Summary
Well Name: RAZOR FEDERAL 26J-2309A

API Number 051233804400				WPC ID 1CO0761020				Well Permit Number				Field Name DJ Horizontal Niobrara				County Weld		State CO					
Well Configuration Type Lateral/Horizontal				Orig KB Elv (ft) 4,742.60				Ground Elevation (ft) 4,725.60				Casing Flange Elevation (ft)				Tubing Head Elevation (ft)				Total Depth (ftKB) 13,533.0			
Original Spud Date 5/4/2014				Completion Date 7/12/2014				Asset Group Redtail				Responsible Engineer Andrew Fish				N/S Dist (ft) 2,326.0		N/S Ref FSL		E/W Dist (ft) 1,980.0		E/W Ref FEL	
Lot		Quarter 1 NW		Quarter 2 SE		Quarter 3		Quarter 4		Section 26		Section Suffix		Section Type		Township 10 N		Township N/S Dir		Range 58 W		Range E/W Dir Meridian	
Lateral/Horizontal - Original Hole, 12/10/2014 2:26:49 PM												Stim/Treat Additives											
MD (ftKB)	D (ft K B)	n (K B)	c (K B)	l (K B)	Vertical schematic (actual)	Logs	Stg #		Add		Type		Amount		Units		Sand Size						
							5	Proppant		40/70 WS		3,839.9		lb		40/70							
Interval 6																							
Stg #		Start Date		Top (ftKB)		Btm (ftKB)		Vol Clean...		Vol Slurry...		Comment											
6		7/6/2014		12,404.0		12,530.0		2993.90		3154.10		Clearstar 30 XL Gel:1826 bbl; 30# Linear Gel:447 bbl; Slickwater:697 bbl; 15% HCl:24 bbl											
Stim/Treat Additives																							
Stg #		Add						Type				Amount		Units		Sand Size							
6		Proppant						20/40 WS				144,671.6		lb		20/40							
6		Proppant						40/70 WS				4,147.1		lb		40/70							
Interval 7																							
Stg #		Start Date		Top (ftKB)		Btm (ftKB)		Vol Clean...		Vol Slurry...		Comment											
7		7/6/2014		12,219.0		12,348.0		3092.30		3248.50		Clearstar 30 XL Gel:1816 bbl; 30# Linear Gel:450 bbl; Slickwater:808 bbl; 15% HCl:18 bbl											
Stim/Treat Additives																							
Stg #		Add						Type				Amount		Units		Sand Size							
7		Proppant						20/40 WS				141,722.4		lb		20/40							
7		Proppant						40/70 WS				3,330.7		lb		40/70							
Interval 8																							
Stg #		Start Date		Top (ftKB)		Btm (ftKB)		Vol Clean...		Vol Slurry...		Comment											
8		7/6/2014		12,040.0		12,152.0		2971.80		3131.80		Clearstar 30 XL Gel:1811 bbl; 30# Linear Gel:450 bbl; Slickwater:574 bbl; 15% HCl:137 bbl											
Stim/Treat Additives																							
Stg #		Add						Type				Amount		Units		Sand Size							
8		Proppant						20/40 WS				145,268.5		lb		20/40							
8		Proppant						40/70 WS				3,326.3		lb		40/70							
Interval 9																							
Stg #		Start Date		Top (ftKB)		Btm (ftKB)		Vol Clean...		Vol Slurry...		Comment											
9		7/6/2014		11,864.0		11,975.0		2851.60		3007.60		Clearstar 30 XL Gel:1822 bbl; 30# Linear Gel:299 bbl; Slickwater:702 bbl; 15% HCl:28 bbl											
Stim/Treat Additives																							
Stg #		Add						Type				Amount		Units		Sand Size							
9		Proppant						20/40 WS				141,770.7		lb		20/40							
9		Proppant						40/70 WS				3,157.6		lb		40/70							
Interval 10																							
Stg #		Start Date		Top (ftKB)		Btm (ftKB)		Vol Clean...		Vol Slurry...		Comment											
10		7/6/2014		11,664.0		11,790.0		2801.40		2947.80		Clearstar 30 XL Gel:1785 bbl; 30# Linear Gel:300 bbl; Slickwater:692 bbl; 15% HCl:25 bbl											
Stim/Treat Additives																							
Stg #		Add						Type				Amount		Units		Sand Size							
10		Proppant						20/40 WS				132,638.5		lb		20/40							
10		Proppant						40/70 WS				3,366.7		lb		40/70							
Interval 11																							
Stg #		Start Date		Top (ftKB)		Btm (ftKB)		Vol Clean...		Vol Slurry...		Comment											
11		7/7/2014		11,479.0		11,605.0		2330.20		2404.90		Clearstar 30 XL Gel:1262 bbl; 30# Linear Gel:300 bbl; Slickwater:744 bbl; 15% HCl:24 bbl											
Stim/Treat Additives																							
Stg #		Add						Type				Amount		Units		Sand Size							
11		Proppant						20/40 WS				65,368.1		lb		20/40							
11		Proppant						40/70 WS				3,988.4		lb		40/70							
Interval 12																							
Stg #		Start Date		Top (ftKB)		Btm (ftKB)		Vol Clean...		Vol Slurry...		Comment											
12		7/7/2014		11,294.0		11,408.0		2942.50		3100.60		Clearstar 30 XL Gel:1784 bbl; 30# Linear Gel:451 bbl; Slickwater:689 bbl; 15% HCl:18 bbl											
Stim/Treat Additives																							
Stg #		Add						Type				Amount		Units		Sand Size							
12		Proppant						20/40 WS				142,717.2		lb		20/40							
12		Proppant						40/70 WS				4,098.1		lb		40/70							
Interval 13																							
Stg #		Start Date		Top (ftKB)		Btm (ftKB)		Vol Clean...		Vol Slurry...		Comment											
13		7/7/2014		11,124.0		11,235.0		2977.60		3131.40		Clearstar 30 XL Gel:1837 bbl; 30# Linear Gel:450 bbl; Slickwater:666 bbl; 15% HCl:25 bbl											
Stim/Treat Additives																							
Stg #		Add						Type				Amount		Units		Sand Size							
13		Proppant						16/30 WS				139,101.2		lb		16/30							
13		Proppant						40/70 WS				3,723.0		lb		40/70							
Interval 14																							
Stg #		Start Date		Top (ftKB)		Btm (ftKB)		Vol Clean...		Vol Slurry...		Comment											
14		7/7/2014		10,924.0		11,050.0		3190.90		3351.10		Clearstar 30 XL Gel:2161 bbl; 30# Linear Gel:336 bbl; Slickwater:674 bbl; 15% HCl:20 bbl											
Stim/Treat Additives																							
Stg #		Add						Type				Amount		Units		Sand Size							
14		Proppant						16/30 WS				144,839.7		lb		16/30							
14		Proppant						40/70 WS				3,976.9		lb		40/70							



Lease Review All - Frac Summary
Well Name: RAZOR FEDERAL 26J-2309A

API Number 051233804400		WPC ID 1CO0761020		Well Permit Number		Field Name DJ Horizontal Niobrara		County Weld		State CO					
Well Configuration Type Lateral/Horizontal		Orig KB Elv (ft) 4,742.60		Ground Elevation (ft) 4,725.60		Casing Flange Elevation (ft)		Tubing Head Elevation (ft)		Total Depth (ftKB) 13,533.0					
Original Spud Date 5/4/2014		Completion Date 7/12/2014		Asset Group Redtail		Responsible Engineer Andrew Fish		N/S Dist (ft) 2,326.0		N/S Ref FSL		E/W Dist (ft) 1,980.0		E/W Ref FEL	
Lot		Quarter 1 NW	Quarter 2 SE	Quarter 3	Quarter 4	Section 26	Section Suffix	Section Type		Township 10 N	Township N/S Dir	Range 58	Range E/W Dir W	Meridian	
Lateral/Horizontal - Original Hole, 12/10/2014 2:26:51 PM						Stim/Treat Stages									
MD (ftKB)	D (ft K B)	n (C B)	Vertical schematic (actual)	Logs	Interval 15										
					Stg # 15	Start Date 7/7/2014	Top (ftKB) 10,739.0	Btm (ftKB) 10,865.0	Vol Clean... 2827.70	Vol Slurry... 2980.50	Comment Clearstar 30 XL Gel:1818 bbl; 30# Linear Gel:296 bbl; Slickwater:689 bbl; 15% HCl:25 bbl				
Stim/Treat Additives															
Stg #		Add		Type			Amount		Units		Sand Size				
15		Proppant		16/30 WS			138,519.2		lb		16/30				
15		Proppant		40/70 WS			3,433.1		lb		40/70				
Interval 16															
Stg #	Start Date	Top (ftKB)	Btm (ftKB)	Vol Clean...	Vol Slurry...	Comment									
16	7/7/2014	10,558.0	10,672.0	2877.30	3026.60	Clearstar 30 XL Gel:1819 bbl; 30# Linear Gel:297 bbl; Slickwater:736 bbl; 15% HCl:25 bbl									
Stim/Treat Additives															
Stg #		Add		Type			Amount		Units		Sand Size				
16		Proppant		16/30 WS			134,872.7		lb		16/30				
16		Proppant		40/70 WS			3,839.9		lb		40/70				
Interval 17															
Stg #	Start Date	Top (ftKB)	Btm (ftKB)	Vol Clean...	Vol Slurry...	Comment									
17	7/8/2014	10,374.0	10,492.0	2985.60	3140.30	Clearstar 30 XL Gel:1871 bbl; 30# Linear Gel:451 bbl; Slickwater:641 bbl; 15% HCl:22 bbl									
Stim/Treat Additives															
Stg #		Add		Type			Amount		Units		Sand Size				
17		Proppant		16/30 WS			140,052.7		lb		16/30				
17		Proppant		40/70 WS			3,648.0		lb		40/70				
Interval 18															
Stg #	Start Date	Top (ftKB)	Btm (ftKB)	Vol Clean...	Vol Slurry...	Comment									
18	7/8/2014	10,196.0	10,297.0	2708.90	2830.60	Clearstar 30 XL Gel:1658 bbl; 30# Linear Gel:401 bbl; Slickwater:626 bbl; 15% HCl:24 bbl									
Stim/Treat Additives															
Stg #		Add		Type			Amount		Units		Sand Size				
18		Proppant		16/30 WS			109,039.7		lb		16/30				
18		Proppant		40/70 WS			3,965.4		lb		40/70				
Interval 19															
Stg #	Start Date	Top (ftKB)	Btm (ftKB)	Vol Clean...	Vol Slurry...	Comment									
19	7/8/2014	9,999.0	10,125.0	3049.20	3204.10	Clearstar 30 XL Gel:1936 bbl; 30# Linear Gel:451 bbl; Slickwater:637 bbl; 15% HCl:26 bbl									
Stim/Treat Additives															
Stg #		Add		Type			Amount		Units		Sand Size				
19		Proppant		16/30 WS			139,998.8		lb		16/30				
19		Proppant		40/70 WS			3,837.0		lb		40/70				
Interval 20															
Stg #	Start Date	Top (ftKB)	Btm (ftKB)	Vol Clean...	Vol Slurry...	Comment									
20	7/8/2014	9,814.0	9,940.0	2991.00	3143.50	Clearstar 30 XL Gel:1831 bbl; 30# Linear Gel:452 bbl; Slickwater:663 bbl; 15% HCl:45 bbl									
Stim/Treat Additives															
Stg #		Add		Type			Amount		Units		Sand Size				
20		Proppant		16/30 WS			137,940.0		lb		16/30				
20		Proppant		40/70 WS			3,710.0		lb		40/70				
Interval 21															
Stg #	Start Date	Top (ftKB)	Btm (ftKB)	Vol Clean...	Vol Slurry...	Comment									
21	7/8/2014	9,629.0	9,755.0	2920.70	3076.80	Clearstar 30 XL Gel:1834 bbl; 30# Linear Gel:447 bbl; Slickwater:615 bbl; 15% HCl:25 bbl									
Stim/Treat Additives															
Stg #		Add		Type			Amount		Units		Sand Size				
21		Proppant		16/30 WS			141,119.8		lb		16/30				
21		Proppant		40/70 WS			3,917.8		lb		40/70				
Interval 22															
Stg #	Start Date	Top (ftKB)	Btm (ftKB)	Vol Clean...	Vol Slurry...	Comment									
22	7/8/2014	9,444.0	9,567.0	2925.30	3087.80	Clearstar 30 XL Gel:1834 bbl; 30# Linear Gel:447 bbl; Slickwater:621 bbl; 15% HCl:23 bbl									
Stim/Treat Additives															
Stg #		Add		Type			Amount		Units		Sand Size				
22		Proppant		16/30 WS			148,027.3		lb		16/30				
22		Proppant		40/70 WS			2,934.0		lb		40/70				
Interval 23															
Stg #	Start Date	Top (ftKB)	Btm (ftKB)	Vol Clean...	Vol Slurry...	Comment									
23	7/9/2014	9,272.0	9,385.0	2899.50	3053.30	Clearstar 30 XL Gel:1828 bbl; 30# Linear Gel:451 bbl; Slickwater:598 bbl; 15% HCl:22 bbl									
Stim/Treat Additives															
Stg #		Add		Type			Amount		Units		Sand Size				
23		Proppant		16/30 WS			139,079.6		lb		16/30				
23		Proppant		40/70 WS			3,762.0		lb		40/70				



Lease Review All - Frac Summary
Well Name: RAZOR FEDERAL 26J-2309A

API Number 051233804400		WPC ID 1CO0761020		Well Permit Number		Field Name DJ Horizontal Niobrara		County Weld		State CO											
Well Configuration Type Lateral/Horizontal		Orig KB Elv (ft) 4,742.60		Ground Elevation (ft) 4,725.60		Casing Flange Elevation (ft)		Tubing Head Elevation (ft)		Total Depth (ftKB) 13,533.0											
Original Spud Date 5/4/2014		Completion Date 7/12/2014		Asset Group Redtail		Responsible Engineer Andrew Fish		N/S Dist (ft) 2,326.0		N/S Ref FSL		E/W Dist (ft) 1,980.0		E/W Ref FEL							
Lot		Quarter 1 NW	Quarter 2 SE	Quarter 3	Quarter 4	Section 26	Section Suffix	Section Type	Township 10	Township N/S Dir N	Range 58	Range E/W Dir W	Meridian								
Lateral/Horizontal - Original Hole, 12/10/2014 2:26:53 PM														Stim/Treat Stages							
<div>MD (ftKB) 47.9 1,553.5 1,807.4 3,465.9 4,469.2 4,879.3 4,982.3 5,711.6 6,097.8 6,178.1 6,312.0 6,483.9 6,606.0 6,793.0 6,918.0 7,106.0 7,224.1 7,414.0 7,524.0 7,712.9 7,846.1 8,025.9 8,150.9 8,334.0 8,460.0 8,643.0 8,768.0 8,951.1 9,076.1 9,272.0 9,384.8 9,565.0 9,692.9 9,870.1 10,001.0 10,195.9 10,296.9 10,490.2 10,618.1 10,795.9 10,925.9 11,124.0 11,234.9 11,405.8 11,538.1 11,735.9 11,866.1 12,040.0 12,151.9 12,346.1 12,461.9 12,657.2 12,775.9 12,962.9 13,079.1 13,268.0 13,388.1 13,476.0</div>	<div>D (ftKB) 47.9 1,553.5 1,807.4 3,465.9 4,469.2 4,879.3 4,982.3 5,711.6 6,097.8 6,178.1 6,312.0 6,483.9 6,606.0 6,793.0 6,918.0 7,106.0 7,224.1 7,414.0 7,524.0 7,712.9 7,846.1 8,025.9 8,150.9 8,334.0 8,460.0 8,643.0 8,768.0 8,951.1 9,076.1 9,272.0 9,384.8 9,565.0 9,692.9 9,870.1 10,001.0 10,195.9 10,296.9 10,490.2 10,618.1 10,795.9 10,925.9 11,124.0 11,234.9 11,405.8 11,538.1 11,735.9 11,866.1 12,040.0 12,151.9 12,346.1 12,461.9 12,657.2 12,775.9 12,962.9 13,079.1 13,268.0 13,388.1 13,476.0</div>	<div>n 1 2 3 4 5 6 7 8 9 10 11 12 13 14 15 16 17 18 19 20 21 22 23 24 25 26 27 28 29 30 31 32 33 34 35 36 37 38 39 40 41 42 43 44 45 46 47 48 49 50 51 52 53 54 55 56 57 58 59 60 61 62 63 64 65 66 67 68 69 70 71 72 73 74 75 76 77 78 79 80 81 82 83 84 85 86 87 88 89 90 91 92 93 94 95 96 97 98 99 100</div>	<div>Vertical schematic (actual)</div>		<div>Logs</div>		Interval 24														
							Stg #	24	Start Date	7/9/2014	Top (ftKB)	9,074.0	Btm (ftKB)	9,200.0	Vol Clean...	2901.80	Vol Slurry...	3057.00	Comment	Clearstar 30 XL Gel:1789 bbl; 30# Linear Gel:446 bbl; Slickwater:642 bbl; 15% HCl:25 bbl	
							Stim/Treat Additives														
							Stg #	Add			Type			Amount		Units		Sand Size			
							24	Proppant			16/30 WS			139,951.8		lb		16/30			
							24	Proppant			40/70 WS			4,161.5		lb		40/70			
							Interval 25														
							Stg #	25	Start Date	7/9/2014	Top (ftKB)	8,889.0	Btm (ftKB)	9,015.0	Vol Clean...	2915.00	Vol Slurry...	3070.10	Comment	Clearstar 30 XL Gel:1809 bbl; 30# Linear Gel:445 bbl; Slickwater:634 bbl; 15% HCl:27 bbl	
							Stim/Treat Additives														
							Stg #	Add			Type			Amount		Units		Sand Size			
							25	Proppant			16/30 WS			139,644.2		lb		16/30			
							25	Proppant			40/70 WS			4,409.6		lb		40/70			
							Interval 26														
							Stg #	26	Start Date	7/9/2014	Top (ftKB)	8,710.0	Btm (ftKB)	8,826.0	Vol Clean...	2841.50	Vol Slurry...	2998.00	Comment	Clearstar 30 XL Gel:1813 bbl; 30# Linear Gel:399 bbl; Slickwater:602v; 15% HCl:27 bbl	
							Stim/Treat Additives														
							Stg #	Add			Type			Amount		Units		Sand Size			
							26	Proppant			16/30 WS			141,740.1		lb		16/30			
							26	Proppant			40/70 WS			3,604.7		lb		40/70			
							Interval 27														
							Stg #	27	Start Date	7/10/2014	Top (ftKB)	8,519.0	Btm (ftKB)	8,645.0	Vol Clean...	2807.80	Vol Slurry...	2960.80	Comment	Clearstar 30 XL Gel:1799 bbl; 30# Linear Gel:421 bbl; Slickwater:588 bbl; 15% HCl:0 bbl	
							Stim/Treat Additives														
							Stg #	Add			Type			Amount		Units		Sand Size			
							27	Proppant			16/30 WS			138,175.1		lb		16/30			
							27	Proppant			40/70 WS			3,938.0		lb		40/70			
							Interval 28														
							Stg #	28	Start Date	7/10/2014	Top (ftKB)	8,334.0	Btm (ftKB)	8,460.0	Vol Clean...	2971.50	Vol Slurry...	3117.60	Comment	Clearstar 30 XL Gel:1775 bbl; 30# Linear Gel:529 bbl; Slickwater:647 bbl; 15% HCl:22 bbl	
							Stim/Treat Additives														
							Stg #	Add			Type			Amount		Units		Sand Size			
							28	Proppant			16/30 WS			131,985.8		lb		16/30			
							28	Proppant			40/70 WS			3,684.1		lb		40/70			
							Interval 29														
							Stg #	29	Start Date	7/10/2014	Top (ftKB)	8,149.0	Btm (ftKB)	8,275.0	Vol Clean...	2891.50	Vol Slurry...	3047.60	Comment	Clearstar 30 XL Gel:1822 bbl; 30# Linear Gel:449 bbl; Slickwater:598 bbl; 15% HCl:24 bbl	
							Stim/Treat Additives														
							Stg #	Add			Type			Amount		Units		Sand Size			
							29	Proppant			16/30 WS			140,927.7		lb		16/30			
							29	Proppant			40/70 WS			4,051.9		lb		40/70			
Interval 30																					
Stg #	30	Start Date	7/10/2014	Top (ftKB)	7,972.0	Btm (ftKB)	8,086.0	Vol Clean...	2936.90	Vol Slurry...	3090.20	Comment	Clearstar 30 XL Gel:1819 bbl; 30# Linear Gel:400 bbl; Slickwater:695 bbl; 15% HCl:23 bbl								
Stim/Treat Additives																					
Stg #	Add			Type			Amount		Units		Sand Size										
30	Proppant			16/30 WS			138,262.3		lb		16/30										
30	Proppant			40/70 WS			4,171.6		lb		40/70										
Interval 31																					
Stg #	31	Start Date	7/11/2014	Top (ftKB)	7,779.0	Btm (ftKB)	7,892.0	Vol Clean...	2863.30	Vol Slurry...	3014.50	Comment	Clearstar 30 XL Gel:1786 bbl; 30# Linear Gel:450 bbl; Slickwater:603 bbl; 15% HCl:24 bbl								
Stim/Treat Additives																					
Stg #	Add			Type			Amount		Units		Sand Size										
31	Proppant			16/30 WS			136,767.0		lb		16/30										
31	Proppant			40/70 WS			3,659.6		lb		40/70										
Interval 32																					
Stg #	32	Start Date	7/11/2014	Top (ftKB)	7,594.0	Btm (ftKB)	7,715.0	Vol Clean...	2663.60	Vol Slurry...	2818.00	Comment	Clearstar 30 XL Gel:1779 bbl; 30# Linear Gel:349 bbl; Slickwater:514 bbl; 15% HCl:21 bbl								
Stim/Treat Additives																					
Stg #	Add			Type			Amount		Units		Sand Size										
32	Proppant			16/30 WS			139,064.0		lb		16/30										
32	Proppant			40/70 WS			4,337.5		lb		40/70										



Lease Review All - Frac Summary
Well Name: RAZOR FEDERAL 26J-2309A

API Number 051233804400			WPC ID 1CO0761020			Well Permit Number			Field Name DJ Horizontal Niobrara			County Weld		State CO		
Well Configuration Type Lateral/Horizontal					Orig KB Elv (ft) 4,742.60		Ground Elevation (ft) 4,725.60		Casing Flange Elevation (ft)			Tubing Head Elevation (ft)		Total Depth (ftKB) 13,533.0		
Original Spud Date 5/4/2014			Completion Date 7/12/2014		Asset Group Redtail			Responsible Engineer Andrew Fish			N/S Dist (ft) 2,326.0		N/S Ref FSL	E/W Dist (ft) 1,980.0		E/W Ref FEL
Lot		Quarter 1 NW	Quarter 2 SE	Quarter 3	Quarter 4	Section 26		Section Suffix	Section Type		Township 10	Township N/S Dir N	Range 58		Range E/W Dir W	Meridian
Lateral/Horizontal - Original Hole, 12/10/2014 2:26:56 PM									Stim/Treat Stages							
MD (ftKB)	D (ft K B)	n (K B)	c (K B)	l (K B)	Vertical schematic (actual)	Logs	Interval 33									
							Stg # 33	Start Date 7/11/2014	Top (ftKB) 7,414.0	Btm (ftKB) 7,524.0	Vol Clean... 3348.30	Vol Slurry... 3506.50	Comment Clearstar 30 XL Gel:1859 bbl; 30# Linear Gel:609 bbl; Slickwater:857 bbl; 15% HCl:23 bbl			
Stim/Treat Additives																
Stg #		Add			Type			Amount		Units		Sand Size				
33		Proppant			16/30 WS			142,949.3		lb		16/30				
33		Proppant			40/70 WS			3,998.5		lb		40/70				
Interval 34																
Stg # 34		Start Date 7/11/2014		Top (ftKB) 7,222.0	Btm (ftKB) 7,350.0	Vol Clean... 2882.10	Vol Slurry... 3038.40	Comment Clearstar 30 XL Gel:1799 bbl; 30# Linear Gel:400 bbl; Slickwater:659 bbl; 15% HCl:24 bbl								
Stim/Treat Additives																
Stg #		Add			Type			Amount		Units		Sand Size				
34		Proppant			16/30 WS			142,293.8		lb		16/30				
34		Proppant			40/70 WS			2,909.5		lb		40/70				
Interval 35																
Stg # 35		Start Date 7/11/2014		Top (ftKB) 7,039.0	Btm (ftKB) 7,165.0	Vol Clean... 2814.50	Vol Slurry... 2968.90	Comment Clearstar 30 XL Gel:1791 bbl; 30# Linear Gel:401 bbl; Slickwater:599 bbl; 15% HCl:24 bbl								
Stim/Treat Additives																
Stg #		Add			Type			Amount		Units		Sand Size				
35		Proppant			16/30 WS			139,428.5		lb		16/30				
35		Proppant			40/70 WS			4,021.6		lb		40/70				
Interval 36																
Stg # 36		Start Date 7/11/2014		Top (ftKB) 6,854.0	Btm (ftKB) 6,980.0	Vol Clean... 2721.40	Vol Slurry... 2852.70	Comment Clearstar 30 XL Gel:1654 bbl; 30# Linear Gel:399 bbl; Slickwater:644 bbl; 15% HCl:24 bbl								
Stim/Treat Additives																
Stg #		Add			Type			Amount		Units		Sand Size				
36		Proppant			16/30 WS			117,726.8		lb		16/30				
36		Proppant			40/70 WS			4,212.0		lb		40/70				
Interval 37																
Stg # 37		Start Date 7/12/2014		Top (ftKB) 6,669.0	Btm (ftKB) 6,795.0	Vol Clean... 267.30	Vol Slurry... 267.30	Comment Clearstar 30 XL Gel:0 bbl; 30# Linear Gel:168 bbl; Slickwater:100 bbl; 15% HCl:0 bbl								
Stim/Treat Additives																
Stg #		Add			Type			Amount		Units		Sand Size				
Interval 38																
Stg # 38		Start Date 7/12/2014		Top (ftKB) 6,484.0	Btm (ftKB) 6,606.0	Vol Clean... 2767.70	Vol Slurry... 2916.80	Comment Clearstar 30 XL Gel:1763 bbl; 30# Linear Gel:400 bbl; Slickwater:582 bbl; 15% HCl:23 bbl								
Stim/Treat Additives																
Stg #		Add			Type			Amount		Units		Sand Size				
38		Proppant			16/30 WS			134,863.9		lb		16/30				
38		Proppant			40/70 WS			3,584.6		lb		40/70				
Interval 39																
Stg # 39		Start Date 7/12/2014		Top (ftKB) 6,310.0	Btm (ftKB) 6,425.0	Vol Clean... 2709.70	Vol Slurry... 2855.10	Comment Clearstar 30 XL Gel:1748 bbl; 30# Linear Gel:399 bbl; Slickwater:563 bbl; 15% HCl:0 bbl								
Stim/Treat Additives																
Stg #		Add			Type			Amount		Units		Sand Size				
39		Proppant			16/30 WS			131,339.1		lb		16/30				
39		Proppant			40/70 WS			3,737.5		lb		40/70				
Interval 40																
Stg # 40		Start Date 7/12/2014		Top (ftKB) 6,114.0	Btm (ftKB) 6,240.0	Vol Clean... 2647.30	Vol Slurry... 2803.30	Comment Clearstar 30 XL Gel:1798 bbl; 30# Linear Gel:299 bbl; Slickwater:551 bbl; 15% HCl:0 bbl								
Stim/Treat Additives																
Stg #		Add			Type			Amount		Units		Sand Size				
40		Proppant			16/30 WS			140,869.9		lb		16/30				
40		Proppant			40/70 WS			3,994.2		lb		40/70				
Tubing - Production set at 5,711.6ftKB on 8/17/2014 15:00																
Set Depth (ftKB) 5,711.6				Comment								Run Date 8/17/2014		Pull Date		
Item Des						OD (in)		ID (in)		Len (ft)		Top (ftKB)		Btm (ftKB)		
KB										16.00		0.5		16.5		
Tubing						2 7/8		2.441		31.46		16.5		48.0		
Tubing Sub						2 7/8		2.441		8.10		48.0		56.1		
Tubing						2 7/8		2.441		1,751.45		56.1		1,807.5		
Gas Lift Mandrel						2 7/8				4.05		1,807.5		1,811.6		
Tubing						2 7/8		2.441		1,087.35		1,811.6		2,898.9		
Gas Lift Mandrel						2 7/8				4.05		2,898.9		2,903.0		

Report Printed: 12/10/2014