

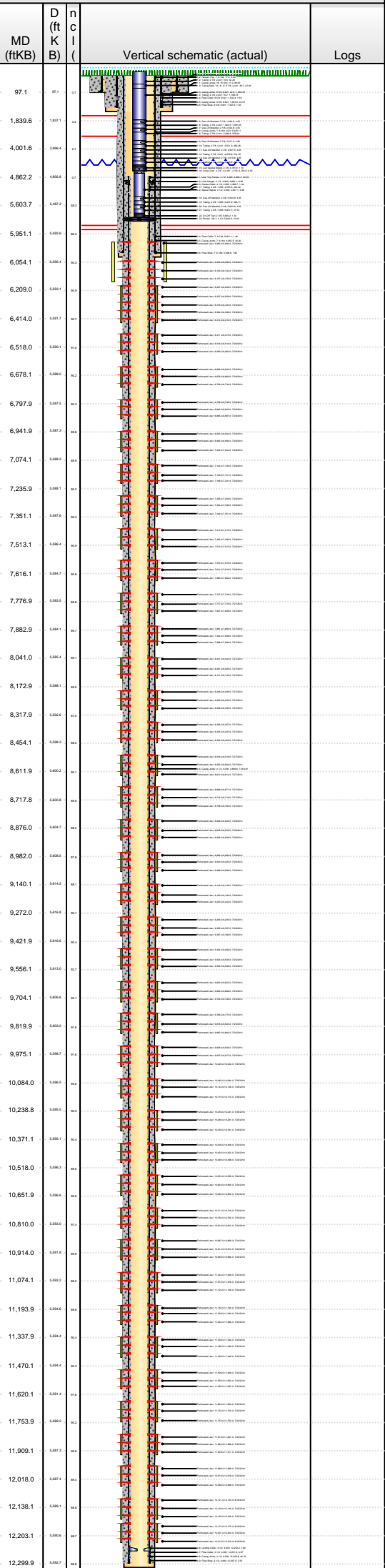


Lease Review All - Frac Summary

Well Name: RAZOR FEDERAL 26J-3509A

API Number 051233834500		WPC ID 1CO0761026		Well Permit Number		Field Name DJ Horizontal Niobrara		County Weld		State CO	
Well Configuration Type Lateral/Horizontal		Orig KB Elv (ft) 4,742.60		Ground Elevation (ft) 4,725.60		Casing Flange Elevation (ft)		Tubing Head Elevation (ft)		Total Depth (ftKB) 12,310.0	
Original Spud Date 5/19/2014		Completion Date 7/29/2014		Asset Group Redtail		Responsible Engineer Charles Ohlson		N/S Dist (ft) 2,326.0	N/S Ref FSL	E/W Dist (ft) 2,013.0	E/W Ref FEL
Lot	Quarter 1 NW	Quarter 2 SE	Quarter 3	Quarter 4	Section 26	Section Suffix	Section Type	Township 10 N	Township N/S Dir	Range 58 W	Meridian

Lateral/Horizontal - Original Hole, 12/10/2014 2:31:58 PM



Wellbore Sections

Wellbore Name	Start Date	Size (in)	Act Top (ftKB)	Act Btm (ftKB)
Original Hole	1/22/2014	20	17.0	97.0
Original Hole	5/19/2014	13 1/2	97.0	1,568.0
Original Hole	5/20/2014	8 3/4	1,568.0	6,018.0
Original Hole	5/23/2014	6 1/8	6,018.0	12,310.0

Conductor Pipe, 97.0ftKB

OD (in)	Wt (lb/ft)	Grade	Top (ftKB)	Btm (ftKB)	Len (ft)	Item Des
16	84.00	K-55	17.0	97.0	80.00	Casing Joints

Surface Csg, 1,549.1ftKB

OD (in)	Wt (lb/ft)	Grade	Top (ftKB)	Btm (ftKB)	Len (ft)	Item Des
9 5/8	36.00	J-55	17.0	17.0	0.00	Landing Joint
9 5/8	36.00	J-55	17.0	22.0	5.00	PUP/Wellhead
9 5/8	36.00	J-55	22.0	1,502.4	1,480.36	Casing Joints
9 5/8	36.00	J-55	1,502.4	1,503.9	1.50	Float Collar
9 5/8	36.00	J-55	1,503.9	1,547.6	43.72	Casing Joints
9 5/8	36.00	J-55	1,547.6	1,549.1	1.50	Float Shoe

Intermediate Csg, 5,998.4ftKB

OD (in)	Wt (lb/ft)	Grade	Top (ftKB)	Btm (ftKB)	Len (ft)	Item Des
7	29.00	HCL-80	17.0	17.0	0.00	Landing Joint
7	29.00	HCL-80	17.0	22.0	5.00	Hanger/ Pup
7	29.00	HCL-80	22.0	5,951.1	5,929.11	Casing Joints
7	29.00	HCL-80	5,951.1	5,952.5	1.40	Float Collar
7	29.00	HCL-80	5,952.5	5,996.8	44.26	Casing Joints
7	29.00	HCL-80	5,996.8	5,998.4	1.60	Float Shoe

Liner, 12,300.0ftKB

OD (in)	Wt (lb/ft)	Grade	Top (ftKB)	Btm (ftKB)	Len (ft)	Item Des
4 1/2	11.60	HCL-80	4,862.3	4,883.1	20.78	Liner Top Packer
4 1/2	11.60	HCL-80	4,883.1	4,889.7	6.65	Liner Hanger
4 1/2	11.60	HCL-80	4,889.7	4,891.1	1.40	Combo Collar
4 1/2	11.60	HCL-80	4,891.1	4,896.6	5.46	Spacer Nipple
4 1/2	11.60	HCL-80	4,896.6	12,250.2	7,353.61	Casing Joints
4 1/2	11.60	HCL-80	12,250.2	12,251.8	1.60	Landing Collar
4 1/2	11.60	HCL-80	12,251.8	12,252.8	0.97	Float Collar
4 1/2	11.60	HCL-80	12,252.8	12,297.5	44.70	Casing Joints
4 1/2	11.60	HCL-80	12,297.5	12,300.0	2.52	Float Shoe

Cement Stages

Des	Pump Start Date	Drill Out Date	Top (ftKB)	Btm (ftKB)	Top Meas Meth
Conductor Cement	1/22/2014		17.0	97.0	
Surface Casing Cement	5/19/2014		17.0	1,549.1	Returns to Surface
Intermediate Casing Cement	5/23/2014		17.0	5,998.4	Returns to Surface
Liner Cement	5/29/2014		4,862.3	12,300.0	Returns to Surface

Perforations

Type of Hole	Date	Top (ftKB)	Btm (ftKB)	Zone
Perforated Liner	7/29/2014	5,992.0	5,994.0	Niobrara, Original Hole
Perforated Liner	7/29/2014	6,054.0	6,056.0	Niobrara, Original Hole
Perforated Liner	7/29/2014	6,100.0	6,102.0	Niobrara, Original Hole
Perforated Liner	7/29/2014	6,157.0	6,159.0	Niobrara, Original Hole
Perforated Liner	7/29/2014	6,207.0	6,209.0	Niobrara, Original Hole
Perforated Liner	7/29/2014	6,257.0	6,259.0	Niobrara, Original Hole
Perforated Liner	7/29/2014	6,318.0	6,320.0	Niobrara, Original Hole
Perforated Liner	7/29/2014	6,364.0	6,366.0	Niobrara, Original Hole
Perforated Liner	7/29/2014	6,414.0	6,416.0	Niobrara, Original Hole
Perforated Liner	7/28/2014	6,471.0	6,473.0	Niobrara, Original Hole
Perforated Liner	7/28/2014	6,516.0	6,518.0	Niobrara, Original Hole
Perforated Liner	7/28/2014	6,560.0	6,562.0	Niobrara, Original Hole
Perforated Liner	7/28/2014	6,628.0	6,630.0	Niobrara, Original Hole
Perforated Liner	7/28/2014	6,678.0	6,680.0	Niobrara, Original Hole
Perforated Liner	7/28/2014	6,728.0	6,730.0	Niobrara, Original Hole
Perforated Liner	7/28/2014	6,796.0	6,798.0	Niobrara, Original Hole
Perforated Liner	7/28/2014	6,840.0	6,842.0	Niobrara, Original Hole
Perforated Liner	7/28/2014	6,885.0	6,887.0	Niobrara, Original Hole
Perforated Liner	7/28/2014	6,942.0	6,944.0	Niobrara, Original Hole
Perforated Liner	7/28/2014	6,992.0	6,994.0	Niobrara, Original Hole
Perforated Liner	7/28/2014	7,042.0	7,044.0	Niobrara, Original Hole
Perforated Liner	7/28/2014	7,104.0	7,106.0	Niobrara, Original Hole
Perforated Liner	7/28/2014	7,149.0	7,151.0	Niobrara, Original Hole
Perforated Liner	7/28/2014	7,199.0	7,201.0	Niobrara, Original Hole
Perforated Liner	7/28/2014	7,256.0	7,258.0	Niobrara, Original Hole
Perforated Liner	7/28/2014	7,304.0	7,306.0	Niobrara, Original Hole
Perforated Liner	7/28/2014	7,349.0	7,351.0	Niobrara, Original Hole
Perforated Liner	7/28/2014	7,413.0	7,415.0	Niobrara, Original Hole



Lease Review All - Frac Summary

Well Name: RAZOR FEDERAL 26J-3509A

API Number 051233834500		WPC ID 1CO0761026		Well Permit Number		Field Name DJ Horizontal Niobrara		County Weld		State CO		
Well Configuration Type Lateral/Horizontal		Orig KB Elv (ft) 4,742.60		Ground Elevation (ft) 4,725.60		Casing Flange Elevation (ft)		Tubing Head Elevation (ft)		Total Depth (ftKB) 12,310.0		
Original Spud Date 5/19/2014		Completion Date 7/29/2014		Asset Group Redtail		Responsible Engineer Charles Ohlson		N/S Dist (ft) 2,326.0	N/S Ref FSL	E/W Dist (ft) 2,013.0	E/W Ref FEL	
Lot	Quarter 1 NW	Quarter 2 SE	Quarter 3	Quarter 4	Section 26	Section Suffix	Section Type	Township 10 N	Township N/S Dir	Range 58	Range E/W Dir W	Meridian

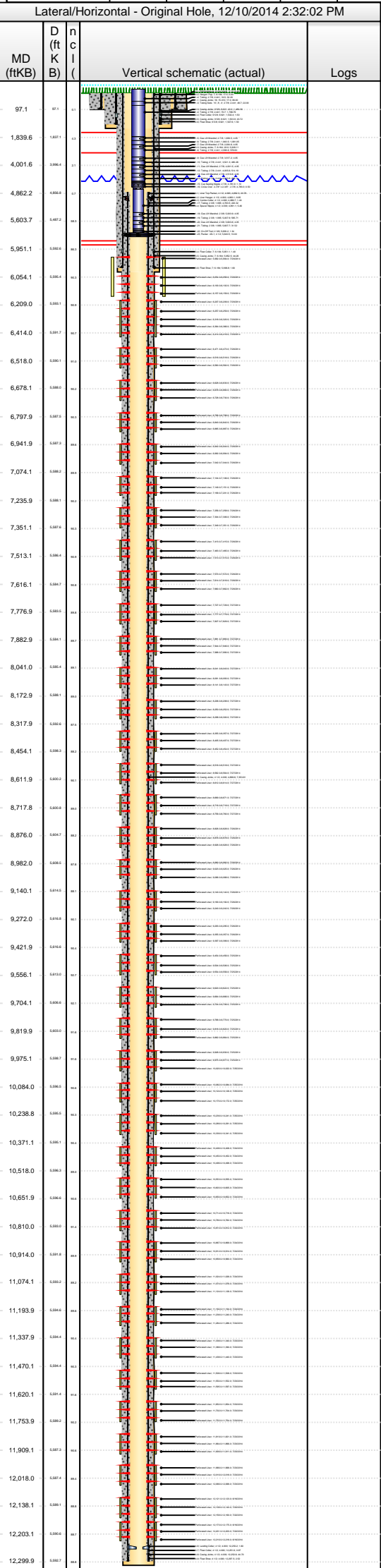
Lateral/Horizontal - Original Hole, 12/10/2014 2:32:00 PM				Perforations				
MD (ftKB)	D (ft KB)	n c l ()	Vertical schematic (actual)	Type of Hole	Date	Top (ftKB)	Btm (ftKB)	Zone
97.1	0.01	0.01		Perforated Liner	7/28/2014	7,463.0	7,465.0	Niobrara, Original Hole
1,839.6	1.0071	0.02		Perforated Liner	7/28/2014	7,513.0	7,515.0	Niobrara, Original Hole
4,001.6	1.0064	0.01		Perforated Liner	7/28/2014	7,570.0	7,572.0	Niobrara, Original Hole
4,862.2	1.0054	0.01		Perforated Liner	7/28/2014	7,614.0	7,616.0	Niobrara, Original Hole
5,603.7	1.0042	0.01		Perforated Liner	7/27/2014	7,660.0	7,662.0	Niobrara, Original Hole
5,951.1	1.0034	0.01		Perforated Liner	7/27/2014	7,727.0	7,729.0	Niobrara, Original Hole
6,054.1	1.0034	0.01		Perforated Liner	7/27/2014	7,777.0	7,779.0	Niobrara, Original Hole
6,209.0	1.0031	0.01		Perforated Liner	7/27/2014	7,827.0	7,829.0	Niobrara, Original Hole
6,414.0	1.0017	0.01		Perforated Liner	7/27/2014	7,881.0	7,883.0	Niobrara, Original Hole
6,518.0	1.0011	0.01		Perforated Liner	7/27/2014	7,944.0	7,946.0	Niobrara, Original Hole
6,676.1	1.0004	0.01		Perforated Liner	7/27/2014	7,988.0	7,990.0	Niobrara, Original Hole
6,797.9	1.0002	0.01		Perforated Liner	7/27/2014	8,041.0	8,043.0	Niobrara, Original Hole
6,941.9	1.0002	0.01		Perforated Liner	7/27/2014	8,091.0	8,093.0	Niobrara, Original Hole
7,074.1	1.0002	0.01		Perforated Liner	7/27/2014	8,141.0	8,143.0	Niobrara, Original Hole
7,235.9	1.0004	0.01		Perforated Liner	7/27/2014	8,206.0	8,208.0	Niobrara, Original Hole
7,351.1	1.0002	0.01		Perforated Liner	7/27/2014	8,250.0	8,252.0	Niobrara, Original Hole
7,513.1	1.0004	0.01		Perforated Liner	7/27/2014	8,298.0	8,300.0	Niobrara, Original Hole
7,616.1	1.0002	0.01		Perforated Liner	7/27/2014	8,355.0	8,357.0	Niobrara, Original Hole
7,776.9	1.0005	0.01		Perforated Liner	7/27/2014	8,405.0	8,407.0	Niobrara, Original Hole
7,882.9	1.0001	0.01		Perforated Liner	7/27/2014	8,452.0	8,454.0	Niobrara, Original Hole
8,041.0	1.0004	0.01		Perforated Liner	7/27/2014	8,516.0	8,518.0	Niobrara, Original Hole
8,172.9	1.0001	0.01		Perforated Liner	7/27/2014	8,562.0	8,564.0	Niobrara, Original Hole
8,317.9	1.0004	0.01		Perforated Liner	7/27/2014	8,612.0	8,614.0	Niobrara, Original Hole
8,454.1	1.0003	0.01		Perforated Liner	7/27/2014	8,669.0	8,671.0	Niobrara, Original Hole
8,611.9	1.0002	0.01		Perforated Liner	7/27/2014	8,716.0	8,718.0	Niobrara, Original Hole
8,717.8	1.0002	0.01		Perforated Liner	7/27/2014	8,758.0	8,760.0	Niobrara, Original Hole
8,876.0	1.0002	0.01		Perforated Liner	7/26/2014	8,826.0	8,828.0	Niobrara, Original Hole
8,982.0	1.0003	0.01		Perforated Liner	7/26/2014	8,876.0	8,878.0	Niobrara, Original Hole
9,140.1	1.0004	0.01		Perforated Liner	7/26/2014	8,926.0	8,928.0	Niobrara, Original Hole
9,272.0	1.0001	0.01		Perforated Liner	7/26/2014	8,980.0	8,982.0	Niobrara, Original Hole
9,421.9	1.0004	0.01		Perforated Liner	7/26/2014	9,023.0	9,025.0	Niobrara, Original Hole
9,556.1	1.0005	0.01		Perforated Liner	7/26/2014	9,086.0	9,088.0	Niobrara, Original Hole
9,704.1	1.0004	0.01		Perforated Liner	7/26/2014	9,140.0	9,142.0	Niobrara, Original Hole
9,819.9	1.0003	0.01		Perforated Liner	7/26/2014	9,190.0	9,192.0	Niobrara, Original Hole
9,975.1	1.0002	0.01		Perforated Liner	7/26/2014	9,240.0	9,242.0	Niobrara, Original Hole
10,084.0	1.0004	0.01		Perforated Liner	7/26/2014	9,293.0	9,295.0	Niobrara, Original Hole
10,238.8	1.0004	0.01		Perforated Liner	7/26/2014	9,355.0	9,357.0	Niobrara, Original Hole
10,371.1	1.0001	0.01		Perforated Liner	7/26/2014	9,397.0	9,399.0	Niobrara, Original Hole
10,518.0	1.0003	0.01		Perforated Liner	7/25/2014	9,454.0	9,456.0	Niobrara, Original Hole
10,651.9	1.0004	0.01		Perforated Liner	7/25/2014	9,504.0	9,506.0	Niobrara, Original Hole
10,810.0	1.0002	0.01	Perforated Liner	7/25/2014	9,554.0	9,556.0	Niobrara, Original Hole	
10,914.0	1.0004	0.01	Perforated Liner	7/25/2014	9,620.0	9,622.0	Niobrara, Original Hole	
11,074.1	1.0002	0.01	Perforated Liner	7/25/2014	9,664.0	9,666.0	Niobrara, Original Hole	
11,193.9	1.0004	0.01	Perforated Liner	7/25/2014	9,704.0	9,706.0	Niobrara, Original Hole	
11,337.9	1.0004	0.01	Perforated Liner	7/25/2014	9,768.0	9,770.0	Niobrara, Original Hole	
11,470.1	1.0004	0.01	Perforated Liner	7/25/2014	9,818.0	9,820.0	Niobrara, Original Hole	
11,620.1	1.0004	0.01	Perforated Liner	7/25/2014	9,862.0	9,864.0	Niobrara, Original Hole	
11,753.9	1.0002	0.01	Perforated Liner	7/25/2014	9,928.0	9,930.0	Niobrara, Original Hole	
11,909.1	1.0003	0.01	Perforated Liner	7/25/2014	9,975.0	9,977.0	Niobrara, Original Hole	
12,018.0	1.0002	0.01	Perforated Liner	7/25/2014	10,020.0	10,022.0	Niobrara, Original Hole	
12,138.1	1.0004	0.01	Perforated Liner	7/25/2014	10,082.0	10,084.0	Niobrara, Original Hole	
12,203.1	1.0004	0.01	Perforated Liner	7/25/2014	10,124.0	10,126.0	Niobrara, Original Hole	
12,299.9	1.0002	0.01	Perforated Liner	7/25/2014	10,170.0	10,172.0	Niobrara, Original Hole	
			Perforated Liner	7/25/2014	10,239.0	10,241.0	Niobrara, Original Hole	
			Perforated Liner	7/25/2014	10,289.0	10,291.0	Niobrara, Original Hole	
			Perforated Liner	7/25/2014	10,339.0	10,341.0	Niobrara, Original Hole	
			Perforated Liner	7/24/2014	10,406.0	10,408.0	Niobrara, Original Hole	
			Perforated Liner	7/24/2014	10,450.0	10,452.0	Niobrara, Original Hole	
			Perforated Liner	7/24/2014	10,496.0	10,498.0	Niobrara, Original Hole	
			Perforated Liner	7/24/2014	10,553.0	10,555.0	Niobrara, Original Hole	
			Perforated Liner	7/24/2014	10,603.0	10,605.0	Niobrara, Original Hole	
			Perforated Liner	7/24/2014	10,650.0	10,652.0	Niobrara, Original Hole	
			Perforated Liner	7/24/2014	10,714.0	10,716.0	Niobrara, Original Hole	
			Perforated Liner	7/24/2014	10,760.0	10,762.0	Niobrara, Original Hole	
			Perforated Liner	7/24/2014	10,810.0	10,812.0	Niobrara, Original Hole	
			Perforated Liner	7/24/2014	10,867.0	10,869.0	Niobrara, Original Hole	
			Perforated Liner	7/24/2014	10,912.0	10,914.0	Niobrara, Original Hole	
			Perforated Liner	7/24/2014	10,958.0	10,960.0	Niobrara, Original Hole	
			Perforated Liner	7/24/2014	11,024.0	11,026.0	Niobrara, Original Hole	
			Perforated Liner	7/24/2014	11,074.0	11,076.0	Niobrara, Original Hole	



Lease Review All - Frac Summary

Well Name: RAZOR FEDERAL 26J-3509A

API Number 051233834500		WPC ID 1CO0761026		Well Permit Number		Field Name DJ Horizontal Niobrara		County Weld		State CO	
Well Configuration Type Lateral/Horizontal		Orig KB Elv (ft) 4,742.60		Ground Elevation (ft) 4,725.60		Casing Flange Elevation (ft)		Tubing Head Elevation (ft)		Total Depth (ftKB) 12,310.0	
Original Spud Date 5/19/2014		Completion Date 7/29/2014		Asset Group Redtail		Responsible Engineer Charles Ohlson		N/S Dist (ft) 2,326.0		E/W Dist (ft) 2,013.0	
Lot		Quarter 1 NW		Quarter 2 SE		Quarter 3		Quarter 4		Section 26	
Section Suffix		Section Type		Township 10 N		Township N/S Dir		Range 58 W		Meridian	



Lateral/Horizontal - Original Hole, 12/10/2014 2:32:02 PM				
Perforations				
MD (ftKB)	D (ftKB)	n (ftKB)	Type of Hole	Zone
97.1	0.01	0.01	Perforated Liner	Niobrara, Original Hole
1,839.6	1.0071	1.02	Perforated Liner	Niobrara, Original Hole
4,001.6	1.0064	1.01	Perforated Liner	Niobrara, Original Hole
4,862.2	1.0064	1.01	Perforated Liner	Niobrara, Original Hole
5,603.7	1.0072	1.03	Perforated Liner	Niobrara, Original Hole
5,951.1	1.0064	1.04	Perforated Liner	Niobrara, Original Hole
6,054.1	1.0064	1.03	Perforated Liner	Niobrara, Original Hole
6,209.0	1.0061	1.03	Perforated Liner	Niobrara, Original Hole
6,414.0	1.0071	1.03	Perforated Liner	Niobrara, Original Hole
6,518.0	1.0061	1.02	Perforated Liner	Niobrara, Original Hole
6,676.1	1.0060	1.03	Perforated Liner	Niobrara, Original Hole
6,797.9	1.0072	1.03	Perforated Liner	Niobrara, Original Hole
6,941.9	1.0074	1.04	Perforated Liner	Niobrara, Original Hole
7,074.1	1.0062	1.04	Perforated Liner	Niobrara, Original Hole
7,235.9	1.0061	1.04	Perforated Liner	Niobrara, Original Hole
7,351.1	1.0074	1.03	Perforated Liner	Niobrara, Original Hole
7,513.1	1.0061	1.04	Perforated Liner	Niobrara, Original Hole
7,616.1	1.0067	1.04	Perforated Liner	Niobrara, Original Hole
7,776.9	1.0065	1.04	Perforated Liner	Niobrara, Original Hole
7,882.9	1.0061	1.02	Perforated Liner	Niobrara, Original Hole
8,041.0	1.0064	1.01	Perforated Liner	Niobrara, Original Hole
8,172.9	1.0061	1.02	Perforated Liner	Niobrara, Original Hole
8,317.9	1.0064	1.02	Perforated Liner	Niobrara, Original Hole
8,454.1	1.0063	1.02	Perforated Liner	Niobrara, Original Hole
8,611.9	1.0062	1.01	Perforated Liner	Niobrara, Original Hole
8,717.8	1.0063	1.02	Perforated Liner	Niobrara, Original Hole
8,876.0	1.0067	1.02	Perforated Liner	Niobrara, Original Hole
8,982.0	1.0063	1.02	Perforated Liner	Niobrara, Original Hole
9,140.1	1.0045	1.01	Perforated Liner	Niobrara, Original Hole
9,272.0	1.0044	1.01	Perforated Liner	Niobrara, Original Hole
9,421.9	1.0046	1.01	Perforated Liner	Niobrara, Original Hole
9,556.1	1.0045	1.01	Perforated Liner	Niobrara, Original Hole
9,704.1	1.0064	1.01	Perforated Liner	Niobrara, Original Hole
9,819.9	1.0063	1.04	Perforated Liner	Niobrara, Original Hole
9,975.1	1.0067	1.04	Perforated Liner	Niobrara, Original Hole
10,084.0	1.0064	1.04	Perforated Liner	Niobrara, Original Hole
10,238.8	1.0064	1.04	Perforated Liner	Niobrara, Original Hole
10,371.1	1.0061	1.04	Perforated Liner	Niobrara, Original Hole
10,518.0	1.0064	1.04	Perforated Liner	Niobrara, Original Hole
10,651.9	1.0064	1.04	Perforated Liner	Niobrara, Original Hole
10,810.0	1.0063	1.04	Perforated Liner	Niobrara, Original Hole
10,914.0	1.0044	1.04	Perforated Liner	Niobrara, Original Hole
11,074.1	1.0062	1.02	Perforated Liner	Niobrara, Original Hole
11,193.9	1.0064	1.04	Perforated Liner	Niobrara, Original Hole
11,337.9	1.0064	1.02	Perforated Liner	Niobrara, Original Hole
11,470.1	1.0064	1.02	Perforated Liner	Niobrara, Original Hole
11,620.1	1.0064	1.02	Perforated Liner	Niobrara, Original Hole
11,753.9	1.0062	1.02	Perforated Liner	Niobrara, Original Hole
11,908.1	1.0073	1.04	Perforated Liner	Niobrara, Original Hole
12,018.0	1.0074	1.04	Perforated Liner	Niobrara, Original Hole
12,138.1	1.0061	1.04	Perforated Liner	Niobrara, Original Hole
12,203.1	1.0064	1.01	Perforated Liner	Niobrara, Original Hole
12,299.9	1.0067	1.04	Perforated Liner	Niobrara, Original Hole

Stimulations & Treatments

Sand Frac on 7/22/2014 13:13

Comment										Frac Length (ft)	
Treatment End Date: 7/29/2014; Number of staged intervals: 40; Total 15% HCl used: 212 bbl; Min frac gradient: 0.828 psi/ft; Number of perfs: 1476; Slickwater 25391 bbl; Clearstar 30 XL Gel 72398 bbl; 30# Linear Gel 13780 bbl.										6,312.00	
Total Clean Volu...	Vol Slurry Tot (bbl)	Proppant Desig...	Proppant Frm (lb)	P Max (psi)	Avg Treat...	Avg Treat...	Max Tre...	Frac Gr...			
111780.70	117989.90	5,632,000.0	5,767,560.0	7,691.0	5,314.0	47.80	57.60	0.83			
Total Add Amount											
Proppant 20/40WS 5624180 lb; Proppant 40/70/WS 143380 lb											

Stim/Treat Fluids

Fluid Name
Clearstar 30 XL Gel; 30# Linear Gel; 15% HCl

Stim/Treat Stages

Interval 1

Stg #	Start Date	Top (ftKB)	Btm (ftKB)	Vol Clean...	Vol Slurry...	Comment
1	7/21/2014	12,173.0	12,218.0	3046.60	3141.40	Clearstar 30 XL Gel: 1520 bbl; 30# Linear Gel: 451 bbl; Slickwater: 1052 bbl; 15% HCl: 24 bbl

Stim/Treat Additives

Stg #	Add	Type	Amount	Units	Sand Size
1	Proppant	20/40WS	84,676.9	lb	20/40
1	Proppant	40/70/WS	3,384.1	lb	40/70

Interval 2

Stg #	Start Date	Top (ftKB)	Btm (ftKB)	Vol Clean...	Vol Slurry...	Comment
2	7/23/2014	12,121.0	12,160.0	2666.70	2761.70	Clearstar 30 XL Gel: 1480 bbl; 30# Linear Gel: 450 bbl; Slickwater: 714 bbl; 15% HCl: 23 bbl

Stim/Treat Additives

Stg #	Add	Type	Amount	Units	Sand Size
2	Proppant	20/40WS	84,723.6	lb	20/40
2	Proppant	40/70/WS	3,561.9	lb	40/70

Interval 3

Stg #	Start Date	Top (ftKB)	Btm (ftKB)	Vol Clean...	Vol Slurry...	Comment
3	7/23/2014	11,966.0	12,068.0	2621.90	2721.20	Clearstar 30 XL Gel: 1487 bbl; 30# Linear Gel: 450 bbl; Slickwater: 661 bbl; 15% HCl: 25 bbl

Stim/Treat Additives

Stg #	Add	Type	Amount	Units	Sand Size
3	Proppant	20/40WS	88,892.4	lb	20/40
3	Proppant	40/70/WS	3,378.0	lb	40/70

Interval 4

Stg #	Start Date	Top (ftKB)	Btm (ftKB)	Vol Clean...	Vol Slurry...	Comment
4	7/23/2014	11,819.0	11,911.0	2907.00	3065.70	Clearstar 30 XL Gel: 1740 bbl; 30# Linear Gel: 451 bbl; Slickwater: 692 bbl; 15% HCl: 24 bbl

Stim/Treat Additives

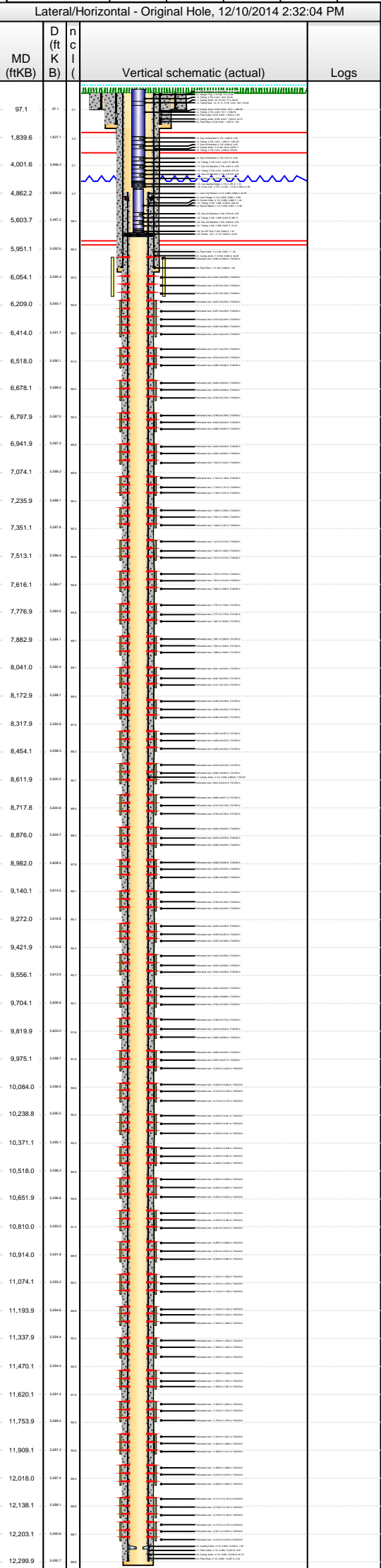
Stg #	Add	Type	Amount	Units	Sand Size
4	Proppant	20/40WS	144,205.3	lb	20/40
4	Proppant	40/70/WS	3,229.2	lb	40/70



Lease Review All - Frac Summary

Well Name: RAZOR FEDERAL 26J-3509A

API Number 051233834500		WPC ID 1CO0761026		Well Permit Number		Field Name DJ Horizontal Niobrara		County Weld		State CO	
Well Configuration Type Lateral/Horizontal		Orig KB Elv (ft) 4,742.60		Ground Elevation (ft) 4,725.60		Casing Flange Elevation (ft)		Tubing Head Elevation (ft)		Total Depth (ftKB) 12,310.0	
Original Spud Date 5/19/2014		Completion Date 7/29/2014		Asset Group Redtail		Responsible Engineer Charles Ohlson		N/S Dist (ft) 2,326.0		E/W Dist (ft) 2,013.0	
Lot		Quarter 1 NW		Quarter 2 SE		Quarter 3		Quarter 4		Section 26	
Section Suffix		Section Type		Township 10 N		Township N/S Dir		Range 58 W		Meridian	



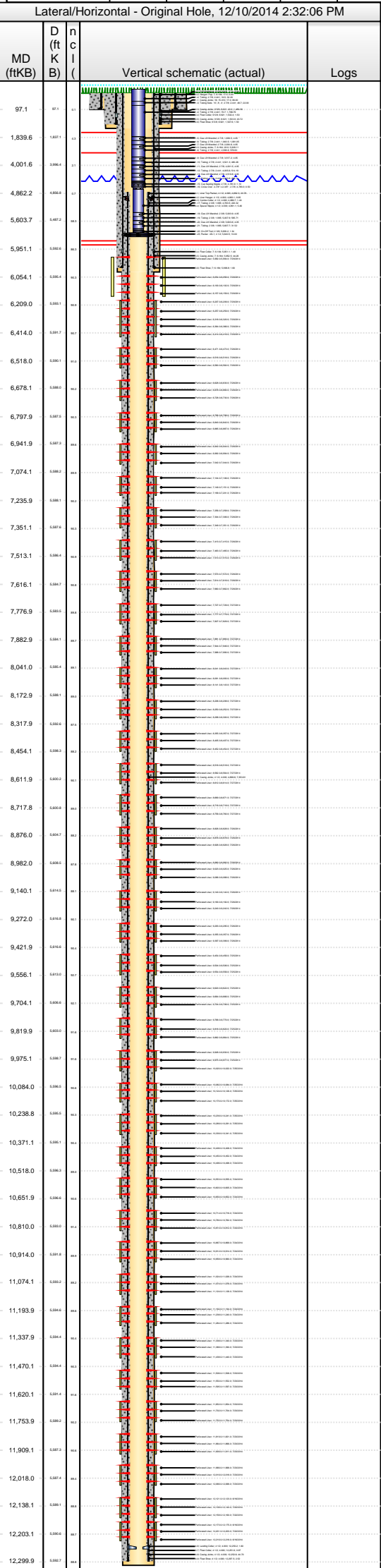
Stim/Treat Stages																								
Interval	Stg #	Start Date	Top (ftKB)	Btm (ftKB)	Vol Clean...	Vol Slurry...	Comment																	
Interval 5	5	7/23/2014	11,652.0	11,754.0	2892.50	3046.90	Clearstar 30 XL Gel:1805 bbl; 30# Linear Gel:401 bbl; Slickwater:664 bbl; 15% HCl:22 bbl																	
	<table border="1" style="width: 100%; border-collapse: collapse;"> <thead> <tr> <th>Stg #</th> <th>Add</th> <th>Type</th> <th>Amount</th> <th>Units</th> <th>Sand Size</th> </tr> </thead> <tbody> <tr> <td>5</td> <td>Proppant</td> <td>20/40WS</td> <td>140,036.5</td> <td>lb</td> <td>20/40</td> </tr> <tr> <td>5</td> <td>Proppant</td> <td>40/70/WS</td> <td>3,339.3</td> <td>lb</td> <td>40/70</td> </tr> </tbody> </table>							Stg #	Add	Type	Amount	Units	Sand Size	5	Proppant	20/40WS	140,036.5	lb	20/40	5	Proppant	40/70/WS	3,339.3	lb
Stg #	Add	Type	Amount	Units	Sand Size																			
5	Proppant	20/40WS	140,036.5	lb	20/40																			
5	Proppant	40/70/WS	3,339.3	lb	40/70																			
Interval 6	6	7/23/2014	11,506.0	11,597.0	3012.50	3174.70	Clearstar 30 XL Gel:1902 bbl; 30# Linear Gel:400 bbl; Slickwater:688 bbl; 15% HCl:23 bbl																	
	<table border="1" style="width: 100%; border-collapse: collapse;"> <thead> <tr> <th>Stg #</th> <th>Add</th> <th>Type</th> <th>Amount</th> <th>Units</th> <th>Sand Size</th> </tr> </thead> <tbody> <tr> <td>6</td> <td>Proppant</td> <td>20/40WS</td> <td>146,867.7</td> <td>lb</td> <td>20/40</td> </tr> <tr> <td>6</td> <td>Proppant</td> <td>40/70/WS</td> <td>3,819.6</td> <td>lb</td> <td>40/70</td> </tr> </tbody> </table>							Stg #	Add	Type	Amount	Units	Sand Size	6	Proppant	20/40WS	146,867.7	lb	20/40	6	Proppant	40/70/WS	3,819.6	lb
Stg #	Add	Type	Amount	Units	Sand Size																			
6	Proppant	20/40WS	146,867.7	lb	20/40																			
6	Proppant	40/70/WS	3,819.6	lb	40/70																			
Interval 7	7	7/24/2014	11,338.0	11,440.0	2923.80	3084.80	Clearstar 30 XL Gel:1819 bbl; 30# Linear Gel:400 bbl; Slickwater:681 bbl; 15% HCl:24 bbl																	
	<table border="1" style="width: 100%; border-collapse: collapse;"> <thead> <tr> <th>Stg #</th> <th>Add</th> <th>Type</th> <th>Amount</th> <th>Units</th> <th>Sand Size</th> </tr> </thead> <tbody> <tr> <td>7</td> <td>Proppant</td> <td>20/40WS</td> <td>146,139.7</td> <td>lb</td> <td>20/40</td> </tr> <tr> <td>7</td> <td>Proppant</td> <td>40/70/WS</td> <td>3,424.0</td> <td>lb</td> <td>40/70</td> </tr> </tbody> </table>							Stg #	Add	Type	Amount	Units	Sand Size	7	Proppant	20/40WS	146,139.7	lb	20/40	7	Proppant	40/70/WS	3,424.0	lb
Stg #	Add	Type	Amount	Units	Sand Size																			
7	Proppant	20/40WS	146,139.7	lb	20/40																			
7	Proppant	40/70/WS	3,424.0	lb	40/70																			
Interval 8	8	7/24/2014	11,192.0	11,286.0	3096.60	3251.10	Clearstar 30 XL Gel:1839 bbl; 30# Linear Gel:400 bbl; Slickwater:832 bbl; 15% HCl:25 bbl																	
	<table border="1" style="width: 100%; border-collapse: collapse;"> <thead> <tr> <th>Stg #</th> <th>Add</th> <th>Type</th> <th>Amount</th> <th>Units</th> <th>Sand Size</th> </tr> </thead> <tbody> <tr> <td>8</td> <td>Proppant</td> <td>20/40WS</td> <td>140,117.5</td> <td>lb</td> <td>20/40</td> </tr> <tr> <td>8</td> <td>Proppant</td> <td>40/70/WS</td> <td>3,355.0</td> <td>lb</td> <td>40/70</td> </tr> </tbody> </table>							Stg #	Add	Type	Amount	Units	Sand Size	8	Proppant	20/40WS	140,117.5	lb	20/40	8	Proppant	40/70/WS	3,355.0	lb
Stg #	Add	Type	Amount	Units	Sand Size																			
8	Proppant	20/40WS	140,117.5	lb	20/40																			
8	Proppant	40/70/WS	3,355.0	lb	40/70																			
Interval 9	9	7/24/2014	11,024.0	11,126.0	2912.30	3070.00	Clearstar 30 XL Gel:1840 bbl; 30# Linear Gel:400 bbl; Slickwater:649 bbl; 15% HCl:23 bbl																	
	<table border="1" style="width: 100%; border-collapse: collapse;"> <thead> <tr> <th>Stg #</th> <th>Add</th> <th>Type</th> <th>Amount</th> <th>Units</th> <th>Sand Size</th> </tr> </thead> <tbody> <tr> <td>9</td> <td>Proppant</td> <td>20/40WS</td> <td>143,180.3</td> <td>lb</td> <td>20/40</td> </tr> <tr> <td>9</td> <td>Proppant</td> <td>40/70/WS</td> <td>3,255.8</td> <td>lb</td> <td>40/70</td> </tr> </tbody> </table>							Stg #	Add	Type	Amount	Units	Sand Size	9	Proppant	20/40WS	143,180.3	lb	20/40	9	Proppant	40/70/WS	3,255.8	lb
Stg #	Add	Type	Amount	Units	Sand Size																			
9	Proppant	20/40WS	143,180.3	lb	20/40																			
9	Proppant	40/70/WS	3,255.8	lb	40/70																			
Interval 10	10	7/24/2014	10,867.0	10,960.0	2869.10	3029.60	Clearstar 30 XL Gel:1847 bbl; 30# Linear Gel:400 bbl; Slickwater:622 bbl; 15% HCl:0 bbl																	
	<table border="1" style="width: 100%; border-collapse: collapse;"> <thead> <tr> <th>Stg #</th> <th>Add</th> <th>Type</th> <th>Amount</th> <th>Units</th> <th>Sand Size</th> </tr> </thead> <tbody> <tr> <td>10</td> <td>Proppant</td> <td>20/40WS</td> <td>145,796.2</td> <td>lb</td> <td>20/40</td> </tr> <tr> <td>10</td> <td>Proppant</td> <td>40/70/WS</td> <td>3,295.7</td> <td>lb</td> <td>40/70</td> </tr> </tbody> </table>							Stg #	Add	Type	Amount	Units	Sand Size	10	Proppant	20/40WS	145,796.2	lb	20/40	10	Proppant	40/70/WS	3,295.7	lb
Stg #	Add	Type	Amount	Units	Sand Size																			
10	Proppant	20/40WS	145,796.2	lb	20/40																			
10	Proppant	40/70/WS	3,295.7	lb	40/70																			
Interval 11	11	7/24/2014	10,714.0	10,812.0	2861.10	3013.20	Clearstar 30 XL Gel:1877 bbl; 30# Linear Gel:436 bbl; Slickwater:548 bbl; 15% HCl:0 bbl																	
	<table border="1" style="width: 100%; border-collapse: collapse;"> <thead> <tr> <th>Stg #</th> <th>Add</th> <th>Type</th> <th>Amount</th> <th>Units</th> <th>Sand Size</th> </tr> </thead> <tbody> <tr> <td>11</td> <td>Proppant</td> <td>20/40WS</td> <td>137,668.2</td> <td>lb</td> <td>20/40</td> </tr> <tr> <td>11</td> <td>Proppant</td> <td>40/70/WS</td> <td>3,620.0</td> <td>lb</td> <td>40/70</td> </tr> </tbody> </table>							Stg #	Add	Type	Amount	Units	Sand Size	11	Proppant	20/40WS	137,668.2	lb	20/40	11	Proppant	40/70/WS	3,620.0	lb
Stg #	Add	Type	Amount	Units	Sand Size																			
11	Proppant	20/40WS	137,668.2	lb	20/40																			
11	Proppant	40/70/WS	3,620.0	lb	40/70																			
Interval 12	12	7/24/2014	10,553.0	10,652.0	2968.90	3128.80	Clearstar 30 XL Gel:1878 bbl; 30# Linear Gel:451 bbl; Slickwater:640 bbl; 15% HCl:0 bbl																	
	<table border="1" style="width: 100%; border-collapse: collapse;"> <thead> <tr> <th>Stg #</th> <th>Add</th> <th>Type</th> <th>Amount</th> <th>Units</th> <th>Sand Size</th> </tr> </thead> <tbody> <tr> <td>12</td> <td>Proppant</td> <td>20/40WS</td> <td>145,071.1</td> <td>lb</td> <td>20/40</td> </tr> <tr> <td>12</td> <td>Proppant</td> <td>40/70/WS</td> <td>3,419.1</td> <td>lb</td> <td>40/70</td> </tr> </tbody> </table>							Stg #	Add	Type	Amount	Units	Sand Size	12	Proppant	20/40WS	145,071.1	lb	20/40	12	Proppant	40/70/WS	3,419.1	lb
Stg #	Add	Type	Amount	Units	Sand Size																			
12	Proppant	20/40WS	145,071.1	lb	20/40																			
12	Proppant	40/70/WS	3,419.1	lb	40/70																			
Interval 13	13	7/24/2014	10,406.0	10,498.0	2949.00	3112.80	Clearstar 30 XL Gel:1913 bbl; 30# Linear Gel:369 bbl; Slickwater:667 bbl; 15% HCl:0 bbl																	
	<table border="1" style="width: 100%; border-collapse: collapse;"> <thead> <tr> <th>Stg #</th> <th>Add</th> <th>Type</th> <th>Amount</th> <th>Units</th> <th>Sand Size</th> </tr> </thead> <tbody> <tr> <td>13</td> <td>Proppant</td> <td>20/40WS</td> <td>148,483.7</td> <td>lb</td> <td>20/40</td> </tr> <tr> <td>13</td> <td>Proppant</td> <td>40/70/WS</td> <td>3,670.8</td> <td>lb</td> <td>40/70</td> </tr> </tbody> </table>							Stg #	Add	Type	Amount	Units	Sand Size	13	Proppant	20/40WS	148,483.7	lb	20/40	13	Proppant	40/70/WS	3,670.8	lb
Stg #	Add	Type	Amount	Units	Sand Size																			
13	Proppant	20/40WS	148,483.7	lb	20/40																			
13	Proppant	40/70/WS	3,670.8	lb	40/70																			



Lease Review All - Frac Summary

Well Name: RAZOR FEDERAL 26J-3509A

API Number 051233834500		WPC ID 1CO0761026		Well Permit Number		Field Name DJ Horizontal Niobrara		County Weld		State CO	
Well Configuration Type Lateral/Horizontal		Orig KB Elv (ft) 4,742.60		Ground Elevation (ft) 4,725.60		Casing Flange Elevation (ft)		Tubing Head Elevation (ft)		Total Depth (ftKB) 12,310.0	
Original Spud Date 5/19/2014		Completion Date 7/29/2014		Asset Group Redtail		Responsible Engineer Charles Ohlson		N/S Dist (ft) 2,326.0		E/W Dist (ft) 2,013.0	
Lot		Quarter 1 NW	Quarter 2 SE	Quarter 3	Quarter 4	Section 26	Section Suffix	Section Type	Township 10 N	Township N/S Dir	Range 58 W



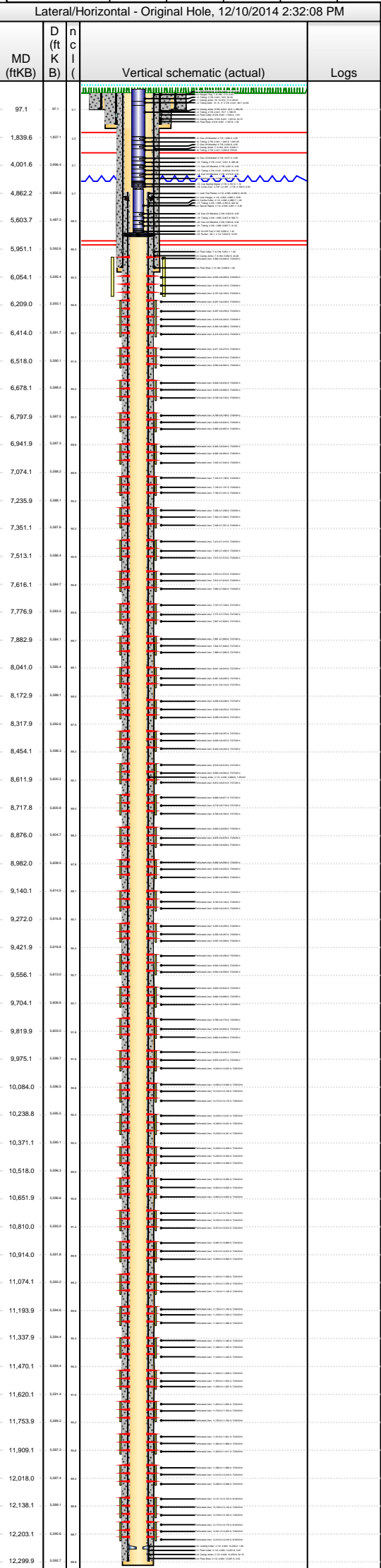
Stim/Treat Stages							
Interval	Stg #	Start Date	Top (ftKB)	Btm (ftKB)	Vol Clean...	Vol Slurry...	Comment
Interval 14	14	7/25/2014	10,239.0	10,341.0	2754.80	2922.90	Clearstar 30 XL Gel:1840 bbl; 30# Linear Gel:300 bbl; Slickwater:615 bbl; 15% HCl:0 bbl
Stim/Treat Additives							
Stg #	Add	Type	Amount	Units	Sand Size		
14	Proppant	20/40WS	152,311.8	lb	20/40		
14	Proppant	40/70/WS	3,855.9	lb	40/70		
Interval 15	15	7/25/2014	10,082.0	10,172.0	2778.30	2937.90	Clearstar 30 XL Gel:1830 bbl; 30# Linear Gel:306 bbl; Slickwater:642 bbl; 15% HCl:0 bbl
Stim/Treat Additives							
Stg #	Add	Type	Amount	Units	Sand Size		
15	Proppant	20/40WS	144,664.7	lb	20/40		
15	Proppant	40/70/WS	3,559.5	lb	40/70		
Interval 16	16	7/25/2014	9,928.0	10,022.0	2751.60	2907.80	Clearstar 30 XL Gel:1842 bbl; 30# Linear Gel:299 bbl; Slickwater:610 bbl; 15% HCl:0 bbl
Stim/Treat Additives							
Stg #	Add	Type	Amount	Units	Sand Size		
16	Proppant	20/40WS	141,626.3	lb	20/40		
16	Proppant	40/70/WS	3,484.5	lb	40/70		
Interval 17	17	7/25/2014	9,768.0	9,864.0	2806.20	2968.20	Clearstar 30 XL Gel:1899 bbl; 30# Linear Gel:300 bbl; Slickwater:607 bbl; 15% HCl:0 bbl
Stim/Treat Additives							
Stg #	Add	Type	Amount	Units	Sand Size		
17	Proppant	20/40WS	146,937.7	lb	20/40		
17	Proppant	40/70/WS	3,578.8	lb	40/70		
Interval 18	18	7/26/2014	9,620.0	9,706.0	2831.70	2988.90	Clearstar 30 XL Gel:1833 bbl; 30# Linear Gel:302 bbl; Slickwater:697 bbl; 15% HCl:0 bbl
Stim/Treat Additives							
Stg #	Add	Type	Amount	Units	Sand Size		
18	Proppant	20/40WS	142,423.2	lb	20/40		
18	Proppant	40/70/WS	3,615.1	lb	40/70		
Interval 19	19	7/26/2014	9,454.0	9,556.0	2860.50	3019.80	Clearstar 30 XL Gel:1830 bbl; 30# Linear Gel:303 bbl; Slickwater:727 bbl; 15% HCl:0 bbl
Stim/Treat Additives							
Stg #	Add	Type	Amount	Units	Sand Size		
19	Proppant	20/40WS	144,441.6	lb	20/40		
19	Proppant	40/70/WS	3,537.7	lb	40/70		
Interval 20	20	7/26/2014	9,293.0	9,399.0	2867.60	3029.70	Clearstar 30 XL Gel:1811 bbl; 30# Linear Gel:301 bbl; Slickwater:756 bbl; 15% HCl:0 bbl
Stim/Treat Additives							
Stg #	Add	Type	Amount	Units	Sand Size		
20	Proppant	20/40WS	146,465.2	lb	20/40		
20	Proppant	40/70/WS	4,108.8	lb	40/70		
Interval 21	21	7/26/2014	9,140.0	9,242.0	2686.80	2845.40	Clearstar 30 XL Gel:1795 bbl; 30# Linear Gel:300 bbl; Slickwater:592 bbl; 15% HCl:0 bbl
Stim/Treat Additives							
Stg #	Add	Type	Amount	Units	Sand Size		
21	Proppant	20/40WS	143,751.3	lb	20/40		
21	Proppant	40/70/WS	3,540.1	lb	40/70		
Interval 22	22	7/26/2014	8,980.0	9,088.0	2712.10	2870.60	Clearstar 30 XL Gel:1828 bbl; 30# Linear Gel:300 bbl; Slickwater:585 bbl; 15% HCl:0 bbl
Stim/Treat Additives							
Stg #	Add	Type	Amount	Units	Sand Size		
22	Proppant	20/40WS	143,634.6	lb	20/40		
22	Proppant	40/70/WS	3,566.7	lb	40/70		



Lease Review All - Frac Summary

Well Name: RAZOR FEDERAL 26J-3509A

API Number 051233834500		WPC ID 1CO0761026		Well Permit Number		Field Name DJ Horizontal Niobrara		County Weld		State CO	
Well Configuration Type Lateral/Horizontal		Orig KB Elv (ft) 4,742.60		Ground Elevation (ft) 4,725.60		Casing Flange Elevation (ft)		Tubing Head Elevation (ft)		Total Depth (ftKB) 12,310.0	
Original Spud Date 5/19/2014		Completion Date 7/29/2014		Asset Group Redtail		Responsible Engineer Charles Ohlson		N/S Dist (ft) 2,326.0		E/W Dist (ft) 2,013.0	
Lot		Quarter 1 NW	Quarter 2 SE	Quarter 3	Quarter 4	Section 26	Section Suffix	Township 10 N	Township N/S Dir	Range 58 W	Meridian



Stim/Treat Stages							
Interval	Stg #	Start Date	Top (ftKB)	Btm (ftKB)	Vol Clean...	Vol Slurry...	Comment
Interval 23	23	7/26/2014	8,826.0	8,928.0	2709.10	2869.60	Clearstar 30 XL Gel:1822 bbl; 30# Linear Gel:300 bbl; Slickwater:588 bbl; 15% HCl:0 bbl
Stim/Treat Additives							
Stg #	Add	Type	Amount	Units	Sand Size		
23	Proppant	20/40WS	145,421.9	lb	20/40		
23	Proppant	40/70WS	3,659.9	lb	40/70		
Interval 24	24	7/27/2014	8,669.0	8,760.0	2728.10	2890.50	Clearstar 30 XL Gel:1832 bbl; 30# Linear Gel:310 bbl; Slickwater:587 bbl; 15% HCl:0 bbl
Stim/Treat Additives							
Stg #	Add	Type	Amount	Units	Sand Size		
24	Proppant	20/40WS	147,428.3	lb	20/40		
24	Proppant	40/70WS	3,454.2	lb	40/70		
Interval 25	25	7/27/2014	8,516.0	8,614.0	2732.40	2899.70	Clearstar 30 XL Gel:1844 bbl; 30# Linear Gel:300 bbl; Slickwater:588 bbl; 15% HCl:0 bbl
Stim/Treat Additives							
Stg #	Add	Type	Amount	Units	Sand Size		
25	Proppant	20/40WS	151,542.4	lb	20/40		
25	Proppant	40/70WS	3,891.0	lb	40/70		
Interval 26	26	7/27/2014	8,355.0	8,454.0	2693.90	2861.00	Clearstar 30 XL Gel:1817 bbl; 30# Linear Gel:303 bbl; Slickwater:574 bbl; 15% HCl:0 bbl
Stim/Treat Additives							
Stg #	Add	Type	Amount	Units	Sand Size		
26	Proppant	20/40WS	151,522.1	lb	20/40		
26	Proppant	40/70WS	3,673.2	lb	40/70		
Interval 27	27	7/27/2014	8,206.0	8,300.0	2720.20	2880.20	Clearstar 30 XL Gel:1820 bbl; 30# Linear Gel:320 bbl; Slickwater:580 bbl; 15% HCl:0 bbl
Stim/Treat Additives							
Stg #	Add	Type	Amount	Units	Sand Size		
27	Proppant	20/40WS	145,070.2	lb	20/40		
27	Proppant	40/70WS	3,518.3	lb	40/70		
Interval 28	28	7/27/2014	8,041.0	8,143.0	2718.40	2876.30	Clearstar 30 XL Gel:1827 bbl; 30# Linear Gel:310 bbl; Slickwater:581 bbl; 15% HCl:0 bbl
Stim/Treat Additives							
Stg #	Add	Type	Amount	Units	Sand Size		
28	Proppant	20/40WS	143,137.7	lb	20/40		
28	Proppant	40/70WS	3,520.8	lb	40/70		
Interval 29	29	7/27/2014	7,881.0	7,990.0	2699.60	2861.00	Clearstar 30 XL Gel:1816 bbl; 30# Linear Gel:299 bbl; Slickwater:585; 15% HCl:0 bbl
Stim/Treat Additives							
Stg #	Add	Type	Amount	Units	Sand Size		
29	Proppant	20/40WS	146,393.2	lb	20/40		
29	Proppant	40/70WS	3,568.0	lb	40/70		
Interval 30	30	7/27/2014	7,727.0	7,829.0	2706.00	2875.40	Clearstar 30 XL Gel:1842 bbl; 30# Linear Gel:298 bbl; Slickwater:566; 15% HCl:0 bbl
Stim/Treat Additives							
Stg #	Add	Type	Amount	Units	Sand Size		
30	Proppant	20/40WS	153,737.2	lb	20/40		
30	Proppant	40/70WS	3,633.3	lb	40/70		
Interval 31	31	7/27/2014	7,570.0	7,662.0	2668.50	2813.70	Clearstar 30 XL Gel:1807 bbl; 30# Linear Gel:299 bbl; Slickwater:563; 15% HCl:0 bbl
Stim/Treat Additives							
Stg #	Add	Type	Amount	Units	Sand Size		
31	Proppant	20/40WS	131,317.6	lb	20/40		
31	Proppant	40/70WS	3,547.4	lb	40/70		

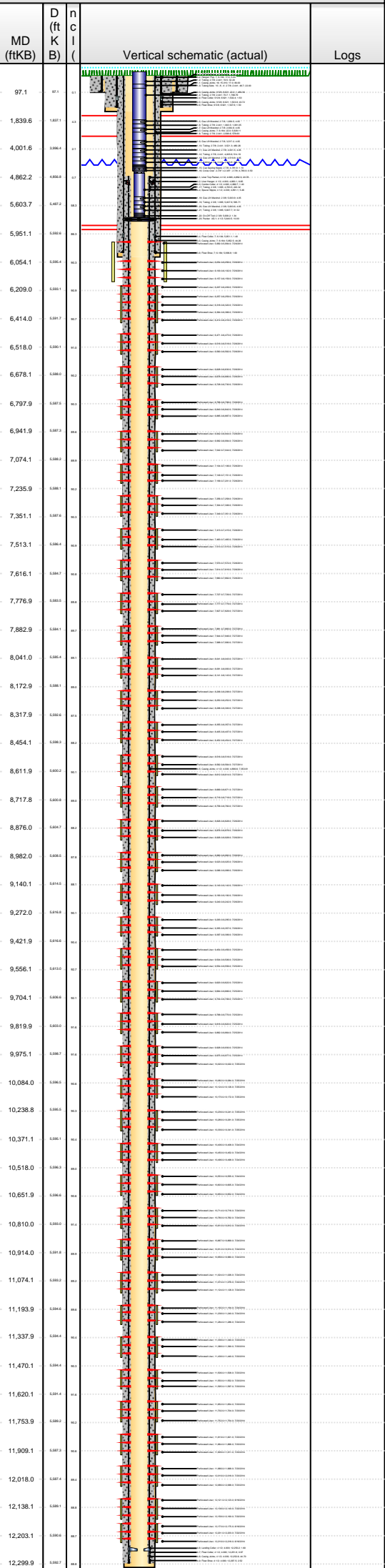


Lease Review All - Frac Summary

Well Name: RAZOR FEDERAL 26J-3509A

API Number 051233834500		WPC ID 1CO0761026		Well Permit Number		Field Name DJ Horizontal Niobrara		County Weld		State CO		
Well Configuration Type Lateral/Horizontal		Orig KB Elv (ft) 4,742.60		Ground Elevation (ft) 4,725.60		Casing Flange Elevation (ft)		Tubing Head Elevation (ft)		Total Depth (ftKB) 12,310.0		
Original Spud Date 5/19/2014		Completion Date 7/29/2014		Asset Group Redtail		Responsible Engineer Charles Ohlson		N/S Dist (ft) 2,326.0	N/S Ref FSL	E/W Dist (ft) 2,013.0	E/W Ref FEL	
Lot	Quarter 1 NW	Quarter 2 SE	Quarter 3	Quarter 4	Section 26	Section Suffix	Section Type	Township 10 N	Township N/S Dir	Range 58 W	Range E/W Dir	Meridian

Lateral/Horizontal - Original Hole, 12/10/2014 2:32:10 PM



Stim/Treat Stages							
Interval	Stg #	Start Date	Top (ftKB)	Btm (ftKB)	Vol Clean...	Vol Slurry...	Comment
Interval 32	32	7/28/2014	7,413.0	7,515.0	3168.60	3326.80	Clearstar 30 XL Gel:2079 bbl; 30# Linear Gel:532 bbl; Slickwater:558 bbl; 15% HCl:0bbl
Stim/Treat Additives							
Stg #	Add	Type	Amount	Units	Sand Size		
32	Proppant	20/40WS	143,372.0	lb	20/40		
32	Proppant	40/70/WS	3,574.0	lb	40/70		
Interval 33	33	7/28/2014	7,256.0	7,351.0	2709.50	2870.10	Clearstar 30 XL Gel:1791 bbl; 30# Linear Gel:317 bbl; Slickwater:602 bbl; 15% HCl:0bbl
Stim/Treat Additives							
Stg #	Add	Type	Amount	Units	Sand Size		
33	Proppant	20/40WS	144,712.3	lb	20/40		
33	Proppant	40/70/WS	4,459.6	lb	40/70		
Interval 34	34	7/28/2014	7,104.0	7,201.0	2656.70	2815.80	Clearstar 30 XL Gel:1801 bbl; 30# Linear Gel:300 bbl; Slickwater:556 bbl; 15% HCl:0 bbl
Stim/Treat Additives							
Stg #	Add	Type	Amount	Units	Sand Size		
34	Proppant	20/40WS	144,198.2	lb	20/40		
34	Proppant	40/70/WS	3,604.3	lb	40/70		
Interval 35	35	7/28/2014	6,942.0	7,044.0	2675.10	2834.30	Clearstar 30 XL Gel:1807 bbl; 30# Linear Gel:164 bbl; Slickwater:703 bbl; 15% HCl:0 bbl
Stim/Treat Additives							
Stg #	Add	Type	Amount	Units	Sand Size		
35	Proppant	20/40WS	144,281.4	lb	20/40		
35	Proppant	40/70/WS	3,597.0	lb	40/70		
Interval 36	36	7/28/2014	6,796.0	6,887.0	2681.10	2842.60	Clearstar 30 XL Gel:1807 bbl; 30# Linear Gel:307 bbl; Slickwater:567 bbl; 15% HCl:0 bbl
Stim/Treat Additives							
Stg #	Add	Type	Amount	Units	Sand Size		
36	Proppant	20/40WS	146,471.3	lb	20/40		
36	Proppant	40/70/WS	3,555.9	lb	40/70		
Interval 37	37	7/28/2014	6,628.0	6,730.0	2685.20	2846.60	Clearstar 30 XL Gel:1823 bbl; 30# Linear Gel:299 bbl; Slickwater:563 bbl; 15% HCl:0 bbl
Stim/Treat Additives							
Stg #	Add	Type	Amount	Units	Sand Size		
37	Proppant	20/40WS	146,263.4	lb	20/40		
37	Proppant	40/70/WS	3,647.8	lb	40/70		
Interval 38	38	7/28/2014	6,471.0	6,562.0	2676.90	2836.10	Clearstar 30 XL Gel:1819 bbl; 30# Linear Gel:299 bbl; Slickwater:559 bbl; 15% HCl:0 bbl
Stim/Treat Additives							
Stg #	Add	Type	Amount	Units	Sand Size		
38	Proppant	20/40WS	144,061.3	lb	20/40		
38	Proppant	40/70/WS	3,770.0	lb	40/70		
Interval 39	39	7/29/2014	6,207.0	6,416.0	2691.30	2855.30	Clearstar 30 XL Gel:1831 bbl; 30# Linear Gel:300 bbl; Slickwater:560 bbl; 15% HCl:0 bbl
Stim/Treat Additives							
Stg #	Add	Type	Amount	Units	Sand Size		
39	Proppant	20/40WS	148,786.7	lb	20/40		
39	Proppant	40/70/WS	3,525.6	lb	40/70		
Interval 40	40	7/29/2014	5,992.0	6,159.0	2682.50	2841.80	Clearstar 30 XL Gel:1760 bbl; 30# Linear Gel:350 bbl; Slickwater:572 bbl; 15% HCl:0 bbl
Stim/Treat Additives							
Stg #	Add	Type	Amount	Units	Sand Size		
40	Proppant	20/40WS	144,347.3	lb	20/40		
40	Proppant	40/70/WS	3,580.1	lb	40/70		



Lease Review All - Frac Summary

Well Name: RAZOR FEDERAL 26J-3509A

API Number 051233834500		WPC ID 1CO0761026		Well Permit Number		Field Name DJ Horizontal Niobrara		County Weld		State CO	
Well Configuration Type Lateral/Horizontal		Orig KB Elv (ft) 4,742.60		Ground Elevation (ft) 4,725.60		Casing Flange Elevation (ft)		Tubing Head Elevation (ft)		Total Depth (ftKB) 12,310.0	
Original Spud Date 5/19/2014		Completion Date 7/29/2014		Asset Group Redtail		Responsible Engineer Charles Ohlson		N/S Dist (ft) 2,326.0		E/W Dist (ft) 2,013.0	
Lot		Quarter 1 NW		Quarter 2 SE		Quarter 3		Quarter 4		Section 26	
		Section Suffix		Section Type		Township 10 N		Township N/S Dir N		Range 58 W	

Lateral/Horizontal - Original Hole, 12/10/2014 2:32:12 PM **Tubing - Production set at 5,650.5ftKB on 8/19/2014 18:00**

MD (ftKB)	D (ftKB)	nc l (ftKB)	Vertical schematic (actual)	Logs	Set Depth (ftKB)	Comment	Run Date	Pull Date			
					5,650.5		8/19/2014				
					Item Des	OD (in)	ID (in)	Len (ft)	Top (ftKB)	Btm (ftKB)	
97.1	0.01	0.01			KB			16.00	0.5	16.5	
					Tubing	2 7/8	2.441	32.20	16.5	48.7	
1,839.6	1.807	1.81			Tubing Subs 10', 8', 4'	2 7/8	2.441	22.00	48.7	70.7	
					Tubing	2 7/8	2.441	1,768.79	70.7	1,839.5	
4,001.6	3.986	3.99			Gas Lift Mandrel	2 7/8		4.05	1,839.5	1,843.5	
					Tubing	2 7/8	2.441	1,091.05	1,843.5	2,934.6	
4,862.2	4.846	4.85			Gas Lift Mandrel	2 7/8		4.05	2,934.6	2,938.6	
					Tubing	2 7/8	2.441	578.60	2,938.6	3,517.2	
5,603.7	5.587	5.59			Gas Lift Mandrel	2 7/8		4.05	3,517.2	3,521.3	
					Tubing	2 7/8	2.441	480.26	3,521.3	4,001.6	
6,054.1	6.038	6.04			Gas Lift Mandrel	2 7/8		4.05	4,001.6	4,005.6	
					Tubing	2 7/8	2.441	514.19	4,005.6	4,519.8	
6,209.0	6.191	6.19			Gas Lift Mandrel	2 7/8		4.05	4,519.8	4,523.8	
					Tubing	2 7/8	2.441	258.11	4,523.8	4,782.0	
6,414.0	6.371	6.37			Cup Seating Nipple	2 7/8		1.10	4,782.0	4,783.1	
					Cross Over 2-7/8" x 2-3/8"	2 7/8		0.50	4,783.1	4,783.6	
6,518.0	6.501	6.50			Tubing	2 3/8	1.995	220.32	4,783.6	5,003.9	
					Gas Lift Mandrel	2 3/8		4.05	5,003.9	5,007.9	
6,941.9	6.927	6.93			Tubing	2 3/8	1.995	595.71	5,007.9	5,603.6	
					Gas Lift Mandrel	2 3/8		4.05	5,603.6	5,607.7	
7,074.1	7.062	7.06			Tubing	2 3/8	1.995	31.52	5,607.7	5,639.2	
					On-Off Tool	2 3/8		1.34	5,639.2	5,640.5	
7,235.9	7.221	7.22			Packer AS-1	4 1/2		10.00	5,640.5	5,650.5	
7,351.1	7.337	7.34									
7,513.1	7.500	7.50									
7,616.1	7.603	7.60									
7,776.9	7.763	7.76									
7,882.9	7.870	7.87									
8,041.0	8.027	8.03									
8,172.9	8.160	8.16									
8,317.9	8.304	8.30									
8,454.1	8.442	8.44									
8,611.9	8.600	8.60									
8,717.8	8.705	8.71									
8,876.0	8.864	8.86									
8,982.0	8.971	8.97									
9,140.1	9.128	9.13									
9,272.0	9.260	9.26									
9,421.9	9.409	9.41									
9,556.1	9.545	9.55									
9,704.1	9.691	9.69									
9,819.9	9.806	9.81									
9,975.1	9.963	9.96									
10,084.0	10.071	10.07									
10,238.8	10.226	10.23									
10,371.1	10.361	10.36									
10,518.0	10.504	10.50									
10,651.9	10.644	10.64									
10,810.0	10.800	10.80									
10,914.0	10.904	10.90									
11,074.1	11.062	11.06									
11,193.9	11.181	11.18									
11,337.9	11.321	11.32									
11,470.1	11.454	11.45									
11,620.1	11.604	11.60									
11,753.9	11.738	11.74									
11,908.1	11.893	11.89									
12,018.0	12.004	12.00									
12,138.1	12.124	12.12									
12,203.1	12.189	12.19									
12,299.9	12.287	12.29									

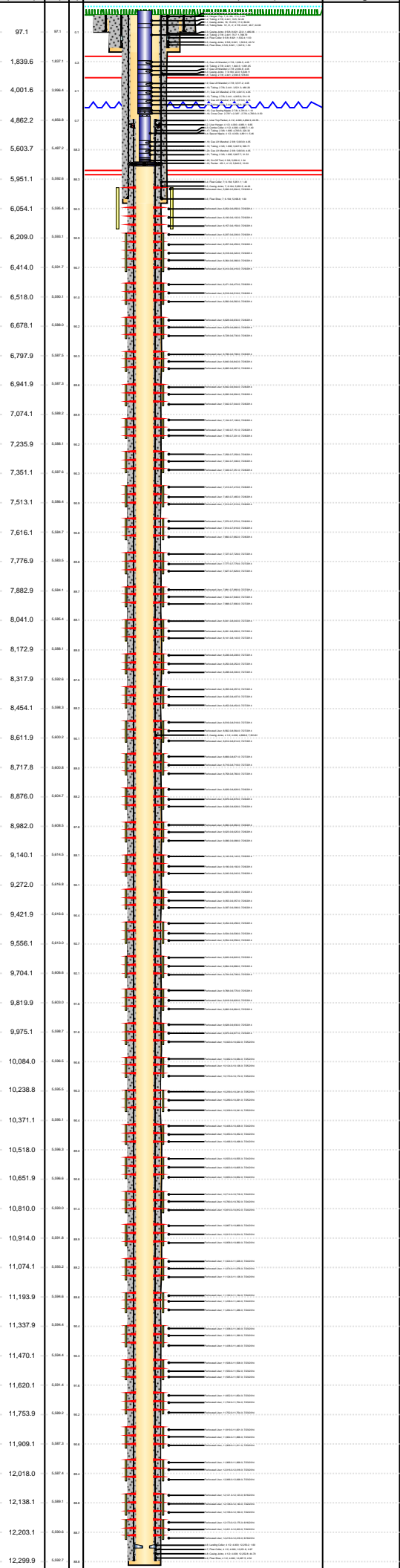


Lease Review All - Frac Summary

Well Name: RAZOR FEDERAL 26J-3509A

API Number 051233834500		WPC ID 1C00761026		Well Permit Number		Field Name DJ Horizontal Niobrara		County Weld		State CO	
Well Configuration Type Lateral/Horizontal		Orig KB Elv (ft) 4,742.60		Ground Elevation (ft) 4,725.60		Casing Flange Elevation (ft)		Tubing Head Elevation (ft)		Total Depth (ftKB) 12,310.0	
Original Spud Date 5/19/2014		Completion Date 7/29/2014		Asset Group Redtail		Responsible Engineer Charles Ohlson		N/S Dist (ft) 2,326.0	N/S Ref FSL	E/W Dist (ft) 2,013.0	E/W Ref FEL
Lot	Quarter 1 NW	Quarter 2 SE	Quarter 3	Quarter 4	Section 26	Section Suffix	Section Type	Township 10 N	Township N/S Dir	Range 58 W	Meridian

Lateral/Horizontal - Original Hole, 12/10/2014 2:32:14 PM						Other In Hole					
MD (ftKB)	D (ft)	n (K)	c (B)	l (ft)	Logs	Des	OD (in)	Run Date	Pull Date	Top (ftKB)	Btm (ftKB)
						CFP	4		8/18/2014	11,933.0	11,935.0
						CFP	4		8/18/2014	12,096.0	12,098.0



Bottom Hole Cores				
Date	Core #	Top (ftKB)	Btm (ftKB)	Recov (ft)