

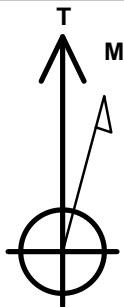
Bayswater Exploration & Production, LLC

Well Name: **Arellano O-10-9HN**

Surface Location: Arellano 10-L Pad Sec.10-T5N-R65W
 North American Datum 1983 , US State Plane 1983 , Colorado Northern Zone
 Ground Elevation: 4616.0
 +N/-S +E/-W Northing Easting Latitude Longitude Slot
 0.0 0.0 1393685.43 3239161.19 40.410889 -104.641133
 RKB - 24' WELL @ 4640.0ft (RKB - 24')

WELLBORE TARGET DETAILS

Name	TVD	+N/-S	+E/-W	Shape
SHL 1565'FSL & 309'FEL, Sec.10	1.0	0.0	0.0	Point
BHL 1490'FSL & 2170'FEL, Sec.9	6875.0	-118.1	-7122.1	Point



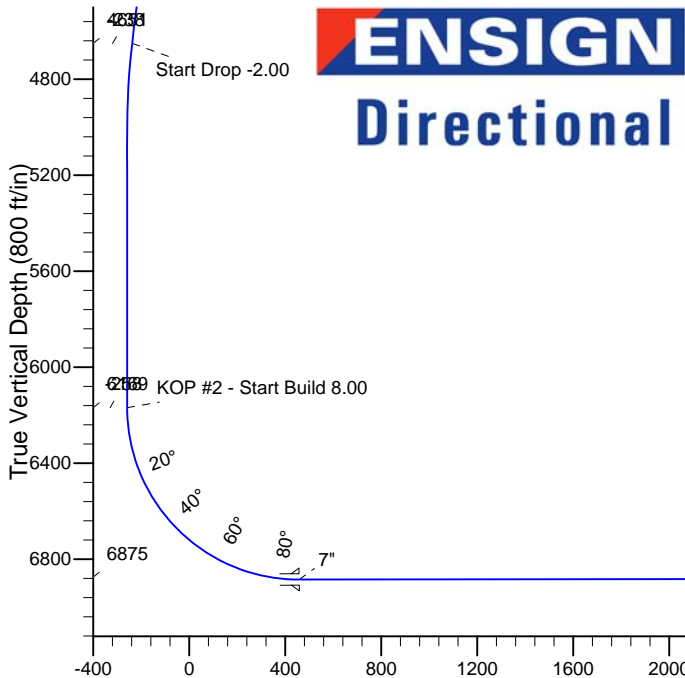
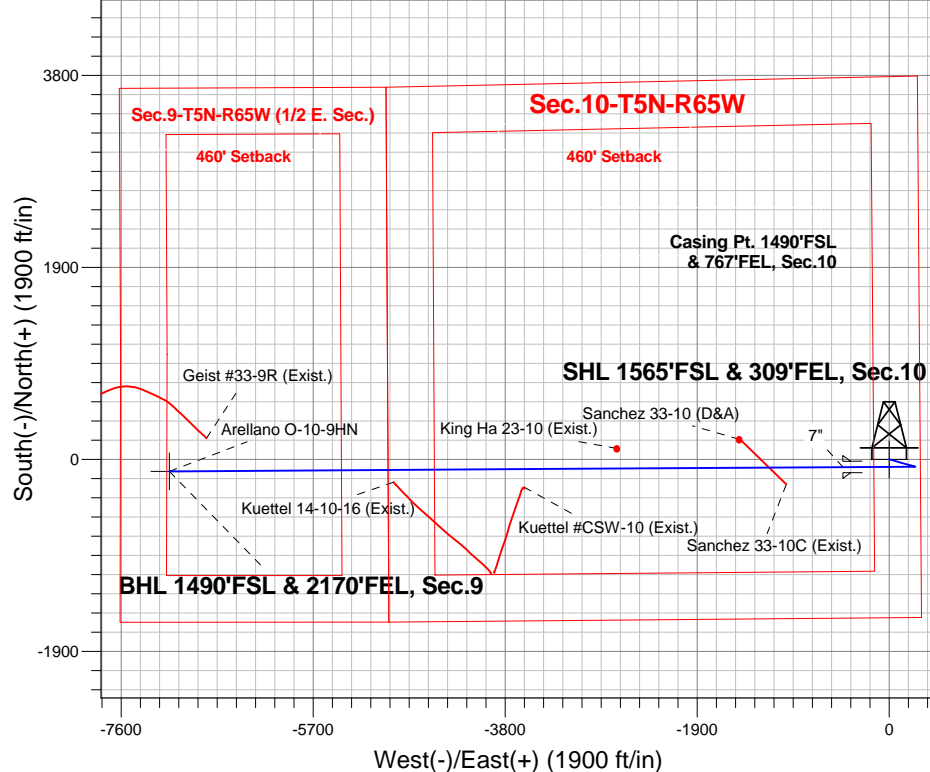
Azimuths to True North
 Magnetic North: 8.34°

Magnetic Field
 Strength: 52792.4snT
 Dip Angle: 66.96°
 Date: 11/11/2014
 Model: IGRF2010

Arellano 10-L Pad Sec.10-T5N-R65W
 Arellano O-10-9HN
 Plan #1 (11-11-14)
 16:40, November 17 2014

ANNOTATIONS

TVD	MD	Annotation
2400.0	2400.0	KOP - Start Build 1.50
4650.7	4665.3	Start Drop -2.00
6169.3	6184.7	KOP #2 - Start Build 8.00
6875.0	13975.1	TD at 13975.1



SECTION DETAILS

Sec	MD	Inc	Azi	TVD	+N/-S	+E/-W	DLeg	TFace	VSec	Target
1	0.0	0.00	0.00	0.0	0.0	0.0	0.00	0.00	0.0	
2	2400.0	0.00	0.00	2400.0	0.0	0.0	0.00	0.00	0.0	
3	2866.8	7.00	105.52	2865.7	-7.6	27.5	1.50	105.52	-27.3	
4	4665.3	7.00	105.52	4650.8	-66.3	238.7	0.00	0.00	-237.6	
5	5015.4	0.00	0.00	5000.0	-72.0	259.3	2.00	180.00	-258.1	
6	6184.7	0.00	0.00	6169.3	-72.0	259.3	0.00	0.00	-258.1	
7	7310.8	90.09	269.64	6885.5	-76.5	-458.0	8.00	269.64	459.2	
8	13975.1	90.09	269.64	6875.0	-118.1	-7122.1	0.00	0.00	7123.1	BHL 1490'FSL & 2170'FEL, Sec.9

BHL 1490'FSL & 2170'FEL, Sec.9

TD at 13975.1

Vertical Section at 269.05° (800 ft/in)



Bayswater Exploration & Production, LLC

SEC.10-T5N-R65W

Arellano 10-L Pad Sec.10-T5N-R65W

Arellano O-10-9HN

Wellbore #1

Plan: Plan #1 (11-11-14)

Standard Planning Report

17 November, 2014



BAYSWATER
EXPLORATION & PRODUCTION, LLC

Database:	Landmark	Local Co-ordinate Reference:	Well Arellano O-10-9HN
Company:	Bayswater Exploration & Production, LLC	TVD Reference:	WELL @ 4640.0ft (RKB - 24')
Project:	SEC.10-T5N-R65W	MD Reference:	WELL @ 4640.0ft (RKB - 24')
Site:	Arellano 10-L Pad Sec.10-T5N-R65W	North Reference:	True
Well:	Arellano O-10-9HN	Survey Calculation Method:	Minimum Curvature
Wellbore:	Wellbore #1		
Design:	Plan #1 (11-11-14)		

Project	SEC.10-T5N-R65W, Weld County, CO		
Map System:	US State Plane 1983	System Datum:	Mean Sea Level
Geo Datum:	North American Datum 1983		Using Well Reference Point
Map Zone:	Colorado Northern Zone		

Site	Arellano 10-L Pad Sec.10-T5N-R65W				
Site Position:		Northing:	1,393,742.11 ft	Latitude:	40.411044
From:	Lat/Long	Easting:	3,239,181.53ft	Longitude:	-104.641058
Position Uncertainty:	0.0 ft	Slot Radius:	"	Grid Convergence:	0.55 °

Well	Arellano O-10-9HN					
Well Position	+N-S	-56.5 ft	Northing:	1,393,685.43 ft	Latitude:	40.410889
	+E-W	-20.9 ft	Easting:	3,239,161.19 ft	Longitude:	-104.641133
Position Uncertainty		0.0 ft	Wellhead Elevation:	ft	Ground Level:	4,616.0 ft

Wellbore	Wellbore #1				
Magnetics	Model Name	Sample Date	Declination (°)	Dip Angle (°)	Field Strength (nT)
	IGRF2010	11/11/2014	8.34	66.96	52,792

Design	Plan #1 (11-11-14)			
Audit Notes:				
Version:	Phase:	PROTOTYPE	Tie On Depth:	0.0
Vertical Section:	Depth From (TVD) (ft)	+N/-S (ft)	+E/-W (ft)	Direction (°)
	0.0	0.0	0.0	269.05

Plan Sections										
Measured Depth (ft)	Inclination (°)	Azimuth (°)	Vertical Depth (ft)	+N/-S (ft)	+E/-W (ft)	Dogleg Rate (°/100ft)	Build Rate (°/100ft)	Turn Rate (°/100ft)	TFO (°)	Target
0.0	0.00	0.00	0.0	0.0	0.0	0.00	0.00	0.00	0.00	
2,400.0	0.00	0.00	2,400.0	0.0	0.0	0.00	0.00	0.00	0.00	
2,866.8	7.00	105.52	2,865.7	-7.6	27.5	1.50	1.50	0.00	105.52	
4,665.3	7.00	105.52	4,650.8	-66.3	238.7	0.00	0.00	0.00	0.00	
5,015.4	0.00	0.00	5,000.0	-72.0	259.3	2.00	-2.00	0.00	180.00	
6,184.7	0.00	0.00	6,169.3	-72.0	259.3	0.00	0.00	0.00	0.00	
7,310.8	90.09	269.64	6,885.5	-76.5	-458.0	8.00	8.00	0.00	269.64	
13,975.1	90.09	269.64	6,875.0	-118.1	-7,122.1	0.00	0.00	0.00	0.00	BHL 1490'FSL & 21

Database:	Landmark	Local Co-ordinate Reference:	Well Arellano O-10-9HN
Company:	Bayswater Exploration & Production, LLC	TVD Reference:	WELL @ 4640.0ft (RKB - 24')
Project:	SEC.10-T5N-R65W	MD Reference:	WELL @ 4640.0ft (RKB - 24')
Site:	Arellano 10-L Pad Sec.10-T5N-R65W	North Reference:	True
Well:	Arellano O-10-9HN	Survey Calculation Method:	Minimum Curvature
Wellbore:	Wellbore #1		
Design:	Plan #1 (11-11-14)		

Planned Survey									
Measured Depth (ft)	Inclination (°)	Azimuth (°)	Vertical Depth (ft)	+N/-S (ft)	+E/-W (ft)	Vertical Section (ft)	Dogleg Rate (°/100ft)	Build Rate (°/100ft)	Turn Rate (°/100ft)
0.0	0.00	0.00	0.0	0.0	0.0	0.0	0.00	0.00	0.00
100.0	0.00	0.00	100.0	0.0	0.0	0.0	0.00	0.00	0.00
200.0	0.00	0.00	200.0	0.0	0.0	0.0	0.00	0.00	0.00
300.0	0.00	0.00	300.0	0.0	0.0	0.0	0.00	0.00	0.00
400.0	0.00	0.00	400.0	0.0	0.0	0.0	0.00	0.00	0.00
500.0	0.00	0.00	500.0	0.0	0.0	0.0	0.00	0.00	0.00
600.0	0.00	0.00	600.0	0.0	0.0	0.0	0.00	0.00	0.00
700.0	0.00	0.00	700.0	0.0	0.0	0.0	0.00	0.00	0.00
800.0	0.00	0.00	800.0	0.0	0.0	0.0	0.00	0.00	0.00
900.0	0.00	0.00	900.0	0.0	0.0	0.0	0.00	0.00	0.00
1,000.0	0.00	0.00	1,000.0	0.0	0.0	0.0	0.00	0.00	0.00
1,100.0	0.00	0.00	1,100.0	0.0	0.0	0.0	0.00	0.00	0.00
1,200.0	0.00	0.00	1,200.0	0.0	0.0	0.0	0.00	0.00	0.00
1,300.0	0.00	0.00	1,300.0	0.0	0.0	0.0	0.00	0.00	0.00
1,400.0	0.00	0.00	1,400.0	0.0	0.0	0.0	0.00	0.00	0.00
1,500.0	0.00	0.00	1,500.0	0.0	0.0	0.0	0.00	0.00	0.00
1,600.0	0.00	0.00	1,600.0	0.0	0.0	0.0	0.00	0.00	0.00
1,700.0	0.00	0.00	1,700.0	0.0	0.0	0.0	0.00	0.00	0.00
1,800.0	0.00	0.00	1,800.0	0.0	0.0	0.0	0.00	0.00	0.00
1,900.0	0.00	0.00	1,900.0	0.0	0.0	0.0	0.00	0.00	0.00
2,000.0	0.00	0.00	2,000.0	0.0	0.0	0.0	0.00	0.00	0.00
2,100.0	0.00	0.00	2,100.0	0.0	0.0	0.0	0.00	0.00	0.00
2,200.0	0.00	0.00	2,200.0	0.0	0.0	0.0	0.00	0.00	0.00
2,300.0	0.00	0.00	2,300.0	0.0	0.0	0.0	0.00	0.00	0.00
2,400.0	0.00	0.00	2,400.0	0.0	0.0	0.0	0.00	0.00	0.00
KOP - Start Build 1.50									
2,500.0	1.50	105.52	2,500.0	-0.4	1.3	-1.3	1.50	1.50	0.00
2,600.0	3.00	105.52	2,599.9	-1.4	5.0	-5.0	1.50	1.50	0.00
2,700.0	4.50	105.52	2,699.7	-3.2	11.3	-11.3	1.50	1.50	0.00
2,800.0	6.00	105.52	2,799.3	-5.6	20.2	-20.1	1.50	1.50	0.00
2,866.8	7.00	105.52	2,865.7	-7.6	27.5	-27.3	1.50	1.50	0.00
2,900.0	7.00	105.52	2,898.6	-8.7	31.3	-31.2	0.00	0.00	0.00
3,000.0	7.00	105.52	2,997.8	-12.0	43.1	-42.9	0.00	0.00	0.00
3,100.0	7.00	105.52	3,097.1	-15.2	54.8	-54.6	0.00	0.00	0.00
3,200.0	7.00	105.52	3,196.4	-18.5	66.6	-66.3	0.00	0.00	0.00
3,300.0	7.00	105.52	3,295.6	-21.8	78.3	-78.0	0.00	0.00	0.00
3,400.0	7.00	105.52	3,394.9	-25.0	90.1	-89.7	0.00	0.00	0.00
3,500.0	7.00	105.52	3,494.1	-28.3	101.8	-101.3	0.00	0.00	0.00
3,600.0	7.00	105.52	3,593.4	-31.5	113.6	-113.0	0.00	0.00	0.00
3,700.0	7.00	105.52	3,692.6	-34.8	125.3	-124.7	0.00	0.00	0.00
3,800.0	7.00	105.52	3,791.9	-38.1	137.1	-136.4	0.00	0.00	0.00
3,900.0	7.00	105.52	3,891.1	-41.3	148.8	-148.1	0.00	0.00	0.00
4,000.0	7.00	105.52	3,990.4	-44.6	160.6	-159.8	0.00	0.00	0.00
4,100.0	7.00	105.52	4,089.6	-47.8	172.3	-171.5	0.00	0.00	0.00
4,200.0	7.00	105.52	4,188.9	-51.1	184.1	-183.2	0.00	0.00	0.00
4,300.0	7.00	105.52	4,288.1	-54.4	195.8	-194.9	0.00	0.00	0.00
4,400.0	7.00	105.52	4,387.4	-57.6	207.5	-206.6	0.00	0.00	0.00
4,500.0	7.00	105.52	4,486.7	-60.9	219.3	-218.3	0.00	0.00	0.00
4,600.0	7.00	105.52	4,585.9	-64.2	231.0	-229.9	0.00	0.00	0.00
4,665.3	7.00	105.52	4,650.7	-66.3	238.7	-237.6	0.00	0.00	0.00
Start Drop -2.00									
4,700.0	6.31	105.52	4,685.2	-67.4	242.6	-241.4	2.00	-2.00	0.00
4,800.0	4.31	105.52	4,784.8	-69.8	251.5	-250.3	2.00	-2.00	0.00
4,900.0	2.31	105.52	4,884.6	-71.4	257.1	-255.8	2.00	-2.00	0.00

Database:	Landmark	Local Co-ordinate Reference:	Well Arellano O-10-9HN
Company:	Bayswater Exploration & Production, LLC	TVD Reference:	WELL @ 4640.0ft (RKB - 24')
Project:	SEC.10-T5N-R65W	MD Reference:	WELL @ 4640.0ft (RKB - 24')
Site:	Arellano 10-L Pad Sec.10-T5N-R65W	North Reference:	True
Well:	Arellano O-10-9HN	Survey Calculation Method:	Minimum Curvature
Wellbore:	Wellbore #1		
Design:	Plan #1 (11-11-14)		

Planned Survey									
Measured Depth (ft)	Inclination (°)	Azimuth (°)	Vertical Depth (ft)	+N/-S (ft)	+E/-W (ft)	Vertical Section (ft)	Dogleg Rate (°/100ft)	Build Rate (°/100ft)	Turn Rate (°/100ft)
5,000.0	0.31	105.52	4,984.6	-72.0	259.3	-258.0	2.00	-2.00	0.00
5,015.4	0.00	0.00	5,000.0	-72.0	259.3	-258.1	2.00	-2.00	0.00
5,100.0	0.00	0.00	5,084.6	-72.0	259.3	-258.1	0.00	0.00	0.00
5,200.0	0.00	0.00	5,184.6	-72.0	259.3	-258.1	0.00	0.00	0.00
5,300.0	0.00	0.00	5,284.6	-72.0	259.3	-258.1	0.00	0.00	0.00
5,400.0	0.00	0.00	5,384.6	-72.0	259.3	-258.1	0.00	0.00	0.00
5,500.0	0.00	0.00	5,484.6	-72.0	259.3	-258.1	0.00	0.00	0.00
5,600.0	0.00	0.00	5,584.6	-72.0	259.3	-258.1	0.00	0.00	0.00
5,700.0	0.00	0.00	5,684.6	-72.0	259.3	-258.1	0.00	0.00	0.00
5,800.0	0.00	0.00	5,784.6	-72.0	259.3	-258.1	0.00	0.00	0.00
5,900.0	0.00	0.00	5,884.6	-72.0	259.3	-258.1	0.00	0.00	0.00
6,000.0	0.00	0.00	5,984.6	-72.0	259.3	-258.1	0.00	0.00	0.00
6,100.0	0.00	0.00	6,084.6	-72.0	259.3	-258.1	0.00	0.00	0.00
6,184.7	0.00	0.00	6,169.3	-72.0	259.3	-258.1	0.00	0.00	0.00
KOP #2 - Start Build 8.00									
6,200.0	1.22	269.64	6,184.6	-72.0	259.1	-257.9	7.99	7.99	0.00
6,300.0	9.22	269.64	6,284.1	-72.1	250.0	-248.8	8.00	8.00	0.00
6,400.0	17.22	269.64	6,381.3	-72.2	227.2	-226.0	8.00	8.00	0.00
6,500.0	25.22	269.64	6,474.5	-72.4	191.0	-189.8	8.00	8.00	0.00
6,600.0	33.22	269.64	6,561.7	-72.7	142.2	-141.0	8.00	8.00	0.00
6,700.0	41.22	269.64	6,641.2	-73.1	81.8	-80.6	8.00	8.00	0.00
6,800.0	49.22	269.64	6,711.6	-73.6	10.9	-9.7	8.00	8.00	0.00
6,900.0	57.22	269.64	6,771.4	-74.1	-69.2	70.4	8.00	8.00	0.00
7,000.0	65.22	269.64	6,819.5	-74.6	-156.7	158.0	8.00	8.00	0.00
7,100.0	73.22	269.64	6,855.0	-75.2	-250.2	251.4	8.00	8.00	0.00
7,200.0	81.22	269.64	6,877.1	-75.8	-347.6	348.8	8.00	8.00	0.00
7,300.0	89.22	269.64	6,885.4	-76.4	-447.2	448.4	8.00	8.00	0.00
7,310.8	90.09	269.64	6,885.5	-76.5	-458.0	459.2	8.00	8.00	0.00
7"									
7,400.0	90.09	269.64	6,885.3	-77.0	-547.2	548.4	0.00	0.00	0.00
7,500.0	90.09	269.64	6,885.2	-77.7	-647.2	648.4	0.00	0.00	0.00
7,600.0	90.09	269.64	6,885.0	-78.3	-747.2	748.4	0.00	0.00	0.00
7,700.0	90.09	269.64	6,884.9	-78.9	-847.2	848.3	0.00	0.00	0.00
7,800.0	90.09	269.64	6,884.7	-79.5	-947.2	948.3	0.00	0.00	0.00
7,900.0	90.09	269.64	6,884.5	-80.2	-1,047.2	1,048.3	0.00	0.00	0.00
8,000.0	90.09	269.64	6,884.4	-80.8	-1,147.2	1,148.3	0.00	0.00	0.00
8,100.0	90.09	269.64	6,884.2	-81.4	-1,247.1	1,248.3	0.00	0.00	0.00
8,200.0	90.09	269.64	6,884.1	-82.0	-1,347.1	1,348.3	0.00	0.00	0.00
8,300.0	90.09	269.64	6,883.9	-82.7	-1,447.1	1,448.3	0.00	0.00	0.00
8,400.0	90.09	269.64	6,883.8	-83.3	-1,547.1	1,548.3	0.00	0.00	0.00
8,500.0	90.09	269.64	6,883.6	-83.9	-1,647.1	1,648.3	0.00	0.00	0.00
8,600.0	90.09	269.64	6,883.4	-84.5	-1,747.1	1,748.3	0.00	0.00	0.00
8,700.0	90.09	269.64	6,883.3	-85.2	-1,847.1	1,848.3	0.00	0.00	0.00
8,800.0	90.09	269.64	6,883.1	-85.8	-1,947.1	1,948.3	0.00	0.00	0.00
8,900.0	90.09	269.64	6,883.0	-86.4	-2,047.1	2,048.3	0.00	0.00	0.00
9,000.0	90.09	269.64	6,882.8	-87.0	-2,147.1	2,148.3	0.00	0.00	0.00
9,100.0	90.09	269.64	6,882.7	-87.7	-2,247.1	2,248.3	0.00	0.00	0.00
9,200.0	90.09	269.64	6,882.5	-88.3	-2,347.1	2,348.3	0.00	0.00	0.00
9,300.0	90.09	269.64	6,882.3	-88.9	-2,447.1	2,448.3	0.00	0.00	0.00
9,400.0	90.09	269.64	6,882.2	-89.5	-2,547.1	2,548.3	0.00	0.00	0.00
9,500.0	90.09	269.64	6,882.0	-90.1	-2,647.1	2,648.3	0.00	0.00	0.00
9,600.0	90.09	269.64	6,881.9	-90.8	-2,747.1	2,748.2	0.00	0.00	0.00
9,700.0	90.09	269.64	6,881.7	-91.4	-2,847.1	2,848.2	0.00	0.00	0.00
9,800.0	90.09	269.64	6,881.6	-92.0	-2,947.1	2,948.2	0.00	0.00	0.00

Database:	Landmark	Local Co-ordinate Reference:	Well Arellano O-10-9HN
Company:	Bayswater Exploration & Production, LLC	TVD Reference:	WELL @ 4640.0ft (RKB - 24')
Project:	SEC.10-T5N-R65W	MD Reference:	WELL @ 4640.0ft (RKB - 24')
Site:	Arellano 10-L Pad Sec.10-T5N-R65W	North Reference:	True
Well:	Arellano O-10-9HN	Survey Calculation Method:	Minimum Curvature
Wellbore:	Wellbore #1		
Design:	Plan #1 (11-11-14)		

Planned Survey									
Measured Depth (ft)	Inclination (°)	Azimuth (°)	Vertical Depth (ft)	+N/-S (ft)	+E/-W (ft)	Vertical Section (ft)	Dogleg Rate (°/100ft)	Build Rate (°/100ft)	Turn Rate (°/100ft)
9,900.0	90.09	269.64	6,881.4	-92.6	-3,047.1	3,048.2	0.00	0.00	0.00
10,000.0	90.09	269.64	6,881.2	-93.3	-3,147.1	3,148.2	0.00	0.00	0.00
10,100.0	90.09	269.64	6,881.1	-93.9	-3,247.1	3,248.2	0.00	0.00	0.00
10,200.0	90.09	269.64	6,880.9	-94.5	-3,347.1	3,348.2	0.00	0.00	0.00
10,300.0	90.09	269.64	6,880.8	-95.1	-3,447.1	3,448.2	0.00	0.00	0.00
10,400.0	90.09	269.64	6,880.6	-95.8	-3,547.1	3,548.2	0.00	0.00	0.00
10,500.0	90.09	269.64	6,880.5	-96.4	-3,647.1	3,648.2	0.00	0.00	0.00
10,600.0	90.09	269.64	6,880.3	-97.0	-3,747.1	3,748.2	0.00	0.00	0.00
10,700.0	90.09	269.64	6,880.1	-97.6	-3,847.1	3,848.2	0.00	0.00	0.00
10,800.0	90.09	269.64	6,880.0	-98.3	-3,947.1	3,948.2	0.00	0.00	0.00
10,900.0	90.09	269.64	6,879.8	-98.9	-4,047.1	4,048.2	0.00	0.00	0.00
11,000.0	90.09	269.64	6,879.7	-99.5	-4,147.1	4,148.2	0.00	0.00	0.00
11,100.0	90.09	269.64	6,879.5	-100.1	-4,247.1	4,248.2	0.00	0.00	0.00
11,200.0	90.09	269.64	6,879.4	-100.8	-4,347.1	4,348.2	0.00	0.00	0.00
11,300.0	90.09	269.64	6,879.2	-101.4	-4,447.1	4,448.2	0.00	0.00	0.00
11,400.0	90.09	269.64	6,879.0	-102.0	-4,547.1	4,548.1	0.00	0.00	0.00
11,500.0	90.09	269.64	6,878.9	-102.6	-4,647.1	4,648.1	0.00	0.00	0.00
11,600.0	90.09	269.64	6,878.7	-103.3	-4,747.1	4,748.1	0.00	0.00	0.00
11,700.0	90.09	269.64	6,878.6	-103.9	-4,847.1	4,848.1	0.00	0.00	0.00
11,800.0	90.09	269.64	6,878.4	-104.5	-4,947.1	4,948.1	0.00	0.00	0.00
11,900.0	90.09	269.64	6,878.3	-105.1	-5,047.1	5,048.1	0.00	0.00	0.00
12,000.0	90.09	269.64	6,878.1	-105.8	-5,147.1	5,148.1	0.00	0.00	0.00
12,100.0	90.09	269.64	6,877.9	-106.4	-5,247.1	5,248.1	0.00	0.00	0.00
12,200.0	90.09	269.64	6,877.8	-107.0	-5,347.1	5,348.1	0.00	0.00	0.00
12,300.0	90.09	269.64	6,877.6	-107.6	-5,447.1	5,448.1	0.00	0.00	0.00
12,400.0	90.09	269.64	6,877.5	-108.3	-5,547.1	5,548.1	0.00	0.00	0.00
12,500.0	90.09	269.64	6,877.3	-108.9	-5,647.1	5,648.1	0.00	0.00	0.00
12,600.0	90.09	269.64	6,877.2	-109.5	-5,747.1	5,748.1	0.00	0.00	0.00
12,700.0	90.09	269.64	6,877.0	-110.1	-5,847.1	5,848.1	0.00	0.00	0.00
12,800.0	90.09	269.64	6,876.8	-110.8	-5,947.1	5,948.1	0.00	0.00	0.00
12,900.0	90.09	269.64	6,876.7	-111.4	-6,047.0	6,048.1	0.00	0.00	0.00
13,000.0	90.09	269.64	6,876.5	-112.0	-6,147.0	6,148.1	0.00	0.00	0.00
13,100.0	90.09	269.64	6,876.4	-112.6	-6,247.0	6,248.1	0.00	0.00	0.00
13,200.0	90.09	269.64	6,876.2	-113.3	-6,347.0	6,348.0	0.00	0.00	0.00
13,300.0	90.09	269.64	6,876.1	-113.9	-6,447.0	6,448.0	0.00	0.00	0.00
13,400.0	90.09	269.64	6,875.9	-114.5	-6,547.0	6,548.0	0.00	0.00	0.00
13,500.0	90.09	269.64	6,875.7	-115.1	-6,647.0	6,648.0	0.00	0.00	0.00
13,600.0	90.09	269.64	6,875.6	-115.7	-6,747.0	6,748.0	0.00	0.00	0.00
13,700.0	90.09	269.64	6,875.4	-116.4	-6,847.0	6,848.0	0.00	0.00	0.00
13,800.0	90.09	269.64	6,875.3	-117.0	-6,947.0	6,948.0	0.00	0.00	0.00
13,900.0	90.09	269.64	6,875.1	-117.6	-7,047.0	7,048.0	0.00	0.00	0.00
13,975.1	90.09	269.64	6,875.0	-118.1	-7,122.1	7,123.1	0.00	0.00	0.00

Database:	Landmark	Local Co-ordinate Reference:	Well Arellano O-10-9HN
Company:	Bayswater Exploration & Production, LLC	TVD Reference:	WELL @ 4640.0ft (RKB - 24')
Project:	SEC.10-T5N-R65W	MD Reference:	WELL @ 4640.0ft (RKB - 24')
Site:	Arellano 10-L Pad Sec.10-T5N-R65W	North Reference:	True
Well:	Arellano O-10-9HN	Survey Calculation Method:	Minimum Curvature
Wellbore:	Wellbore #1		
Design:	Plan #1 (11-11-14)		

Targets										
Target Name	Dip Angle (°)	Dip Dir. (°)	TVD (ft)	+N/-S (ft)	+E/-W (ft)	Northing (ft)	Easting (ft)	Latitude	Longitude	
- hit/miss target										
- Shape										
SHL 1565'FSL & 309'I	0.00	0.00	1.0	0.0	0.0	1,393,685.44	3,239,161.19	40.410889	-104.641133	
- plan hits target center										
- Point										
BHL 1490'FSL & 217'C	0.00	0.00	6,875.0	-118.1	-7,122.1	1,393,498.37	3,232,040.60	40.410562	-104.666709	
- plan hits target center										
- Point										

Casing Points					
Measured Depth (ft)	Vertical Depth (ft)	Name	Casing Diameter (")	Hole Diameter (")	
7,310.8	6,885.5	7"	7	7-1/2	

Plan Annotations					
Measured Depth (ft)	Vertical Depth (ft)	Local Coordinates +N/-S (ft)	+E/-W (ft)	Comment	
2,400.0	2,400.0	0.0	0.0	KOP - Start Build 1.50	
4,665.3	4,650.7	0.0	0.0	Start Drop -2.00	
6,184.7	6,169.3	-66.3	238.7	KOP #2 - Start Build 8.00	
13,975.1	6,875.0	-72.0	259.3	TD at 13975.1	