

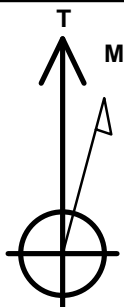
Bayswater Exploration & Production, LLC

Well Name: **Arellano N-10-9HN**

Surface Location: Arellano 10-L Pad Sec.10-T5N-R65W
 North American Datum 1983 , US State Plane 1983 , Colorado Northern Zone
 Ground Elevation: 4616.0
 +N/-S +E/-W Northing Easting Latitude Longitude Slot
 0.0 0.0 1393699.69 3239166.35 40.410928 -104.641114
 RKB - 24' WELL @ 4640.0ft (RKB - 24')

WELLBORE TARGET DETAILS

Name	TVD	+N/-S	+E/-W	Shape
SHL 1579'FSL & 303'FEL, Sec.10	1.0	0.0	0.0	Point
BHL 1820'FSL & 2170'FEL, Sec.9	6875.0	197.8	-7129.0	Point



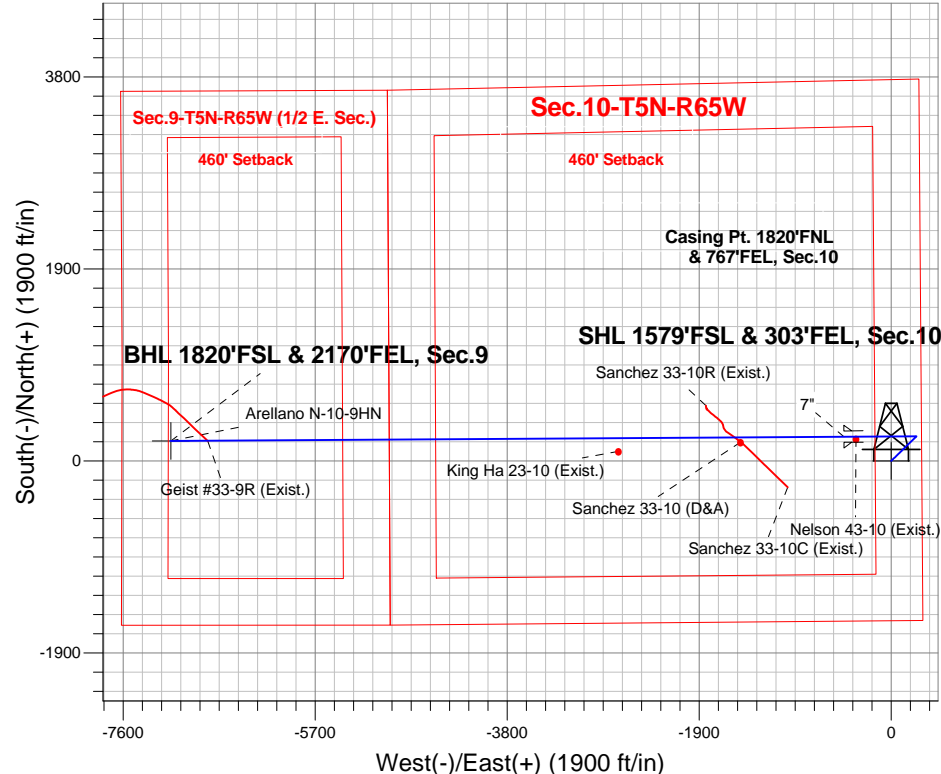
Azimuths to True North
 Magnetic North: 8.33°

Magnetic Field
 Strength: 52784.0snT
 Dip Angle: 66.96°
 Date: 12/10/2014
 Model: IGRF2010

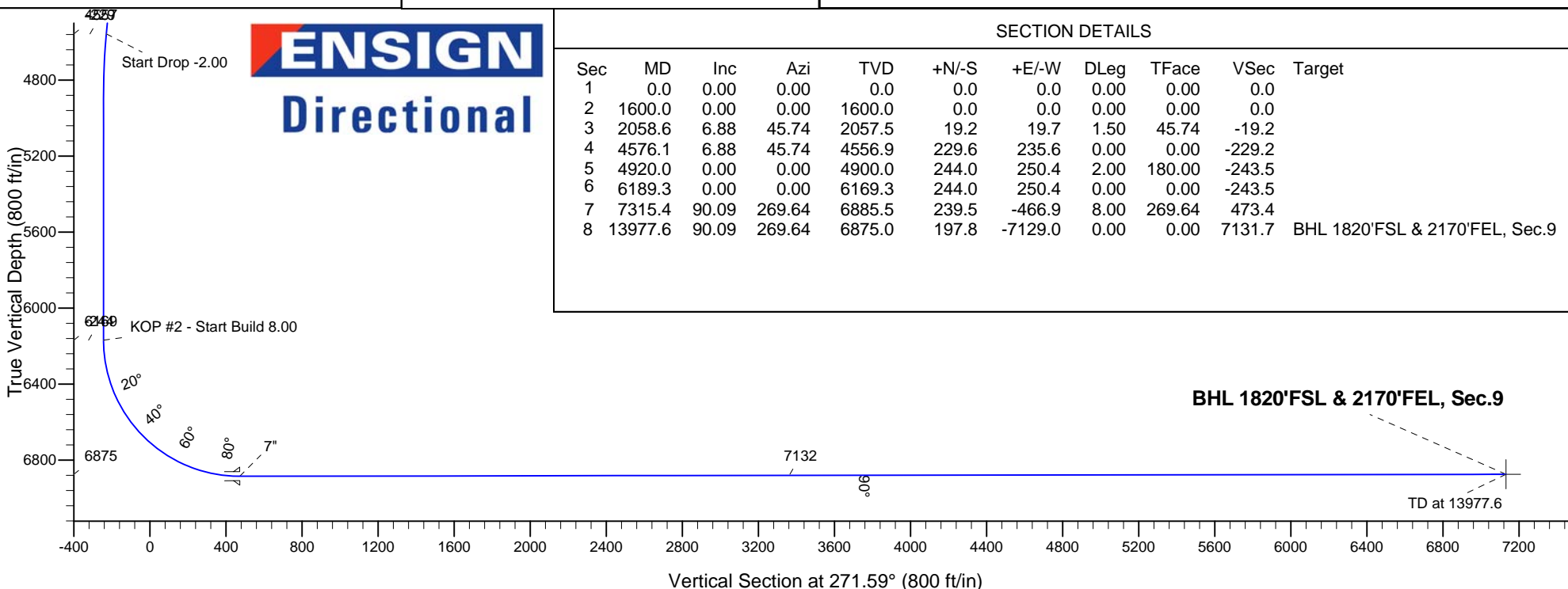
Arellano 10-L Pad Sec.10-T5N-R65W
 Arellano N-10-9HN
 Plan #1 (12-10-14)
 9:11, December 10 2014

ANNOTATIONS

TVD	MD	Annotation
1600.0	1600.0	KOP - Start Build 1.50
4556.9	4576.1	Start Drop -2.00
6169.3	6189.3	KOP #2 - Start Build 8.00
6875.0	13977.6	TD at 13977.6



ENSIGN
 Directional



SECTION DETAILS

Sec	MD	Inc	Azi	TVD	+N/-S	+E/-W	DLeg	TFace	VSec	Target
1	0.0	0.00	0.00	0.0	0.0	0.0	0.00	0.00	0.0	
2	1600.0	0.00	0.00	1600.0	0.0	0.0	0.00	0.00	0.0	
3	2058.6	6.88	45.74	2057.5	19.2	19.7	1.50	45.74	-19.2	
4	4576.1	6.88	45.74	4556.9	229.6	235.6	0.00	0.00	-229.2	
5	4920.0	0.00	0.00	4900.0	244.0	250.4	2.00	180.00	-243.5	
6	6189.3	0.00	0.00	6169.3	244.0	250.4	0.00	0.00	-243.5	
7	7315.4	90.09	269.64	6885.5	239.5	-466.9	8.00	269.64	473.4	
8	13977.6	90.09	269.64	6875.0	197.8	-7129.0	0.00	0.00	7131.7	BHL 1820'FSL & 2170'FEL, Sec.9

BHL 1820'FSL & 2170'FEL, Sec.9

TD at 13977.6

Vertical Section at 271.59° (800 ft/in)



Bayswater Exploration & Production, LLC

SEC.10-T5N-R65W

Arellano 10-L Pad Sec.10-T5N-R65W

Arellano N-10-9HN

Wellbore #1

Plan: Plan #1 (12-10-14)

Standard Planning Report

10 December, 2014



BAYSWATER
EXPLORATION & PRODUCTION, LLC

Database:	Landmark	Local Co-ordinate Reference:	Well Arellano N-10-9HN
Company:	Bayswater Exploration & Production, LLC	TVD Reference:	WELL @ 4640.0ft (RKB - 24')
Project:	SEC.10-T5N-R65W	MD Reference:	WELL @ 4640.0ft (RKB - 24')
Site:	Arellano 10-L Pad Sec.10-T5N-R65W	North Reference:	True
Well:	Arellano N-10-9HN	Survey Calculation Method:	Minimum Curvature
Wellbore:	Wellbore #1		
Design:	Plan #1 (12-10-14)		

Project	SEC.10-T5N-R65W, Weld County, CO		
Map System:	US State Plane 1983	System Datum:	Mean Sea Level
Geo Datum:	North American Datum 1983		Using Well Reference Point
Map Zone:	Colorado Northern Zone		

Site	Arellano 10-L Pad Sec.10-T5N-R65W				
Site Position:		Northing:	1,393,742.11 ft	Latitude:	40.411044
From:	Lat/Long	Easting:	3,239,181.53ft	Longitude:	-104.641058
Position Uncertainty:	0.0 ft	Slot Radius:	"	Grid Convergence:	0.55 °

Well	Arellano N-10-9HN					
Well Position	+N-S	-42.3 ft	Northing:	1,393,699.69 ft	Latitude:	40.410928
	+E-W	-15.6 ft	Easting:	3,239,166.35 ft	Longitude:	-104.641114
Position Uncertainty		0.0 ft	Wellhead Elevation:	ft	Ground Level:	4,616.0 ft

Wellbore	Wellbore #1				
Magnetics	Model Name	Sample Date	Declination (°)	Dip Angle (°)	Field Strength (nT)
	IGRF2010	12/10/2014	8.33	66.96	52,784

Design	Plan #1 (12-10-14)			
Audit Notes:				
Version:	Phase:	PROTOTYPE	Tie On Depth:	0.0
Vertical Section:	Depth From (TVD) (ft)	+N/-S (ft)	+E/-W (ft)	Direction (°)
	0.0	0.0	0.0	271.59

Plan Sections										
Measured Depth (ft)	Inclination (°)	Azimuth (°)	Vertical Depth (ft)	+N/-S (ft)	+E/-W (ft)	Dogleg Rate (°/100ft)	Build Rate (°/100ft)	Turn Rate (°/100ft)	TFO (°)	Target
0.0	0.00	0.00	0.0	0.0	0.0	0.00	0.00	0.00	0.00	
1,600.0	0.00	0.00	1,600.0	0.0	0.0	0.00	0.00	0.00	0.00	
2,058.6	6.88	45.74	2,057.5	19.2	19.7	1.50	1.50	0.00	45.74	
4,576.1	6.88	45.74	4,556.9	229.6	235.6	0.00	0.00	0.00	0.00	
4,920.0	0.00	0.00	4,900.0	244.0	250.4	2.00	-2.00	0.00	180.00	
6,189.3	0.00	0.00	6,169.3	244.0	250.4	0.00	0.00	0.00	0.00	
7,315.4	90.09	269.64	6,885.5	239.5	-466.9	8.00	8.00	0.00	269.64	
13,977.6	90.09	269.64	6,875.0	197.8	-7,129.0	0.00	0.00	0.00	0.00	BHL 1820'FSL & 21

Database:	Landmark	Local Co-ordinate Reference:	Well Arellano N-10-9HN
Company:	Bayswater Exploration & Production, LLC	TVD Reference:	WELL @ 4640.0ft (RKB - 24')
Project:	SEC.10-T5N-R65W	MD Reference:	WELL @ 4640.0ft (RKB - 24')
Site:	Arellano 10-L Pad Sec.10-T5N-R65W	North Reference:	True
Well:	Arellano N-10-9HN	Survey Calculation Method:	Minimum Curvature
Wellbore:	Wellbore #1		
Design:	Plan #1 (12-10-14)		

Planned Survey									
Measured Depth (ft)	Inclination (°)	Azimuth (°)	Vertical Depth (ft)	+N/-S (ft)	+E/-W (ft)	Vertical Section (ft)	Dogleg Rate (°/100ft)	Build Rate (°/100ft)	Turn Rate (°/100ft)
0.0	0.00	0.00	0.0	0.0	0.0	0.0	0.00	0.00	0.00
1.0	0.00	0.00	1.0	0.0	0.0	0.0	0.00	0.00	0.00
SHL 1579'FSL & 303'FEL, Sec.10									
100.0	0.00	0.00	100.0	0.0	0.0	0.0	0.00	0.00	0.00
200.0	0.00	0.00	200.0	0.0	0.0	0.0	0.00	0.00	0.00
300.0	0.00	0.00	300.0	0.0	0.0	0.0	0.00	0.00	0.00
400.0	0.00	0.00	400.0	0.0	0.0	0.0	0.00	0.00	0.00
500.0	0.00	0.00	500.0	0.0	0.0	0.0	0.00	0.00	0.00
600.0	0.00	0.00	600.0	0.0	0.0	0.0	0.00	0.00	0.00
700.0	0.00	0.00	700.0	0.0	0.0	0.0	0.00	0.00	0.00
800.0	0.00	0.00	800.0	0.0	0.0	0.0	0.00	0.00	0.00
900.0	0.00	0.00	900.0	0.0	0.0	0.0	0.00	0.00	0.00
1,000.0	0.00	0.00	1,000.0	0.0	0.0	0.0	0.00	0.00	0.00
1,100.0	0.00	0.00	1,100.0	0.0	0.0	0.0	0.00	0.00	0.00
1,200.0	0.00	0.00	1,200.0	0.0	0.0	0.0	0.00	0.00	0.00
1,300.0	0.00	0.00	1,300.0	0.0	0.0	0.0	0.00	0.00	0.00
1,400.0	0.00	0.00	1,400.0	0.0	0.0	0.0	0.00	0.00	0.00
1,500.0	0.00	0.00	1,500.0	0.0	0.0	0.0	0.00	0.00	0.00
1,600.0	0.00	0.00	1,600.0	0.0	0.0	0.0	0.00	0.00	0.00
KOP - Start Build 1.50									
1,700.0	1.50	45.74	1,700.0	0.9	0.9	-0.9	1.50	1.50	0.00
1,800.0	3.00	45.74	1,799.9	3.7	3.7	-3.6	1.50	1.50	0.00
1,900.0	4.50	45.74	1,899.7	8.2	8.4	-8.2	1.50	1.50	0.00
2,000.0	6.00	45.74	1,999.3	14.6	15.0	-14.6	1.50	1.50	0.00
2,058.6	6.88	45.74	2,057.5	19.2	19.7	-19.2	1.50	1.50	0.00
2,100.0	6.88	45.74	2,098.6	22.7	23.2	-22.6	0.00	0.00	0.00
2,200.0	6.88	45.74	2,197.9	31.0	31.8	-30.9	0.00	0.00	0.00
2,300.0	6.88	45.74	2,297.2	39.4	40.4	-39.3	0.00	0.00	0.00
2,400.0	6.88	45.74	2,396.4	47.7	49.0	-47.6	0.00	0.00	0.00
2,500.0	6.88	45.74	2,495.7	56.1	57.6	-56.0	0.00	0.00	0.00
2,600.0	6.88	45.74	2,595.0	64.4	66.1	-64.3	0.00	0.00	0.00
2,700.0	6.88	45.74	2,694.3	72.8	74.7	-72.7	0.00	0.00	0.00
2,800.0	6.88	45.74	2,793.6	81.2	83.3	-81.0	0.00	0.00	0.00
2,900.0	6.88	45.74	2,892.8	89.5	91.9	-89.3	0.00	0.00	0.00
3,000.0	6.88	45.74	2,992.1	97.9	100.4	-97.7	0.00	0.00	0.00
3,100.0	6.88	45.74	3,091.4	106.2	109.0	-106.0	0.00	0.00	0.00
3,200.0	6.88	45.74	3,190.7	114.6	117.6	-114.4	0.00	0.00	0.00
3,300.0	6.88	45.74	3,290.0	122.9	126.2	-122.7	0.00	0.00	0.00
3,400.0	6.88	45.74	3,389.2	131.3	134.8	-131.1	0.00	0.00	0.00
3,500.0	6.88	45.74	3,488.5	139.7	143.3	-139.4	0.00	0.00	0.00
3,600.0	6.88	45.74	3,587.8	148.0	151.9	-147.7	0.00	0.00	0.00
3,700.0	6.88	45.74	3,687.1	156.4	160.5	-156.1	0.00	0.00	0.00
3,800.0	6.88	45.74	3,786.4	164.7	169.1	-164.4	0.00	0.00	0.00
3,900.0	6.88	45.74	3,885.6	173.1	177.6	-172.8	0.00	0.00	0.00
4,000.0	6.88	45.74	3,984.9	181.5	186.2	-181.1	0.00	0.00	0.00
4,100.0	6.88	45.74	4,084.2	189.8	194.8	-189.5	0.00	0.00	0.00
4,200.0	6.88	45.74	4,183.5	198.2	203.4	-197.8	0.00	0.00	0.00
4,300.0	6.88	45.74	4,282.8	206.5	211.9	-206.1	0.00	0.00	0.00
4,400.0	6.88	45.74	4,382.0	214.9	220.5	-214.5	0.00	0.00	0.00
4,500.0	6.88	45.74	4,481.3	223.2	229.1	-222.8	0.00	0.00	0.00
4,576.1	6.88	45.74	4,556.9	229.6	235.6	-229.2	0.00	0.00	0.00
Start Drop -2.00									
4,600.0	6.40	45.74	4,580.6	231.5	237.6	-231.1	2.00	-2.00	0.00

Database:	Landmark	Local Co-ordinate Reference:	Well Arellano N-10-9HN
Company:	Bayswater Exploration & Production, LLC	TVD Reference:	WELL @ 4640.0ft (RKB - 24')
Project:	SEC.10-T5N-R65W	MD Reference:	WELL @ 4640.0ft (RKB - 24')
Site:	Arellano 10-L Pad Sec.10-T5N-R65W	North Reference:	True
Well:	Arellano N-10-9HN	Survey Calculation Method:	Minimum Curvature
Wellbore:	Wellbore #1		
Design:	Plan #1 (12-10-14)		

Planned Survey									
Measured Depth (ft)	Inclination (°)	Azimuth (°)	Vertical Depth (ft)	+N/-S (ft)	+E/-W (ft)	Vertical Section (ft)	Dogleg Rate (°/100ft)	Build Rate (°/100ft)	Turn Rate (°/100ft)
4,700.0	4.40	45.74	4,680.2	238.1	244.4	-237.7	2.00	-2.00	0.00
4,800.0	2.40	45.74	4,780.0	242.2	248.6	-241.8	2.00	-2.00	0.00
4,900.0	0.40	45.74	4,880.0	244.0	250.3	-243.5	2.00	-2.00	0.00
4,920.0	0.00	0.00	4,900.0	244.0	250.4	-243.5	2.00	-2.00	0.00
5,000.0	0.00	0.00	4,980.0	244.0	250.4	-243.5	0.00	0.00	0.00
5,100.0	0.00	0.00	5,080.0	244.0	250.4	-243.5	0.00	0.00	0.00
5,200.0	0.00	0.00	5,180.0	244.0	250.4	-243.5	0.00	0.00	0.00
5,300.0	0.00	0.00	5,280.0	244.0	250.4	-243.5	0.00	0.00	0.00
5,400.0	0.00	0.00	5,380.0	244.0	250.4	-243.5	0.00	0.00	0.00
5,500.0	0.00	0.00	5,480.0	244.0	250.4	-243.5	0.00	0.00	0.00
5,600.0	0.00	0.00	5,580.0	244.0	250.4	-243.5	0.00	0.00	0.00
5,700.0	0.00	0.00	5,680.0	244.0	250.4	-243.5	0.00	0.00	0.00
5,800.0	0.00	0.00	5,780.0	244.0	250.4	-243.5	0.00	0.00	0.00
5,900.0	0.00	0.00	5,880.0	244.0	250.4	-243.5	0.00	0.00	0.00
6,000.0	0.00	0.00	5,980.0	244.0	250.4	-243.5	0.00	0.00	0.00
6,100.0	0.00	0.00	6,080.0	244.0	250.4	-243.5	0.00	0.00	0.00
6,189.3	0.00	0.00	6,169.3	244.0	250.4	-243.5	0.00	0.00	0.00
KOP #2 - Start Build 8.00									
6,200.0	0.85	269.64	6,180.0	244.0	250.3	-243.5	7.99	7.99	0.00
6,300.0	8.85	269.64	6,279.5	243.9	241.9	-235.0	8.00	8.00	0.00
6,400.0	16.85	269.64	6,376.9	243.8	219.6	-212.8	8.00	8.00	0.00
6,500.0	24.85	269.64	6,470.3	243.6	184.1	-177.2	8.00	8.00	0.00
6,600.0	32.85	269.64	6,557.8	243.3	135.8	-129.0	8.00	8.00	0.00
6,700.0	40.85	269.64	6,637.8	242.9	75.9	-69.2	8.00	8.00	0.00
6,800.0	48.85	269.64	6,708.6	242.5	5.4	1.3	8.00	8.00	0.00
6,900.0	56.85	269.64	6,768.9	242.0	-74.2	80.9	8.00	8.00	0.00
7,000.0	64.85	269.64	6,817.6	241.4	-161.5	168.1	8.00	8.00	0.00
7,100.0	72.85	269.64	6,853.6	240.8	-254.7	261.2	8.00	8.00	0.00
7,200.0	80.85	269.64	6,876.4	240.2	-352.0	358.5	8.00	8.00	0.00
7,300.0	88.85	269.64	6,885.3	239.6	-451.5	457.9	8.00	8.00	0.00
7,315.4	90.09	269.64	6,885.5	239.5	-466.9	473.3	8.00	8.00	0.00
7"									
7,400.0	90.09	269.64	6,885.3	239.0	-551.5	557.9	0.00	0.00	0.00
7,500.0	90.09	269.64	6,885.2	238.3	-651.5	657.8	0.00	0.00	0.00
7,600.0	90.09	269.64	6,885.0	237.7	-751.5	757.8	0.00	0.00	0.00
7,700.0	90.09	269.64	6,884.9	237.1	-851.5	857.7	0.00	0.00	0.00
7,800.0	90.09	269.64	6,884.7	236.5	-951.5	957.6	0.00	0.00	0.00
7,900.0	90.09	269.64	6,884.5	235.8	-1,051.5	1,057.6	0.00	0.00	0.00
8,000.0	90.09	269.64	6,884.4	235.2	-1,151.5	1,157.5	0.00	0.00	0.00
8,100.0	90.09	269.64	6,884.2	234.6	-1,251.5	1,257.5	0.00	0.00	0.00
8,200.0	90.09	269.64	6,884.1	234.0	-1,351.5	1,357.4	0.00	0.00	0.00
8,300.0	90.09	269.64	6,883.9	233.3	-1,451.4	1,457.4	0.00	0.00	0.00
8,400.0	90.09	269.64	6,883.8	232.7	-1,551.4	1,557.3	0.00	0.00	0.00
8,500.0	90.09	269.64	6,883.6	232.1	-1,651.4	1,657.2	0.00	0.00	0.00
8,600.0	90.09	269.64	6,883.4	231.5	-1,751.4	1,757.2	0.00	0.00	0.00
8,700.0	90.09	269.64	6,883.3	230.8	-1,851.4	1,857.1	0.00	0.00	0.00
8,800.0	90.09	269.64	6,883.1	230.2	-1,951.4	1,957.1	0.00	0.00	0.00
8,900.0	90.09	269.64	6,883.0	229.6	-2,051.4	2,057.0	0.00	0.00	0.00
9,000.0	90.09	269.64	6,882.8	228.9	-2,151.4	2,157.0	0.00	0.00	0.00
9,100.0	90.09	269.64	6,882.7	228.3	-2,251.4	2,256.9	0.00	0.00	0.00
9,200.0	90.09	269.64	6,882.5	227.7	-2,351.4	2,356.8	0.00	0.00	0.00
9,300.0	90.09	269.64	6,882.3	227.1	-2,451.4	2,456.8	0.00	0.00	0.00
9,400.0	90.09	269.64	6,882.2	226.4	-2,551.4	2,556.7	0.00	0.00	0.00
9,500.0	90.09	269.64	6,882.0	225.8	-2,651.4	2,656.7	0.00	0.00	0.00

Database:	Landmark	Local Co-ordinate Reference:	Well Arellano N-10-9HN
Company:	Bayswater Exploration & Production, LLC	TVD Reference:	WELL @ 4640.0ft (RKB - 24')
Project:	SEC.10-T5N-R65W	MD Reference:	WELL @ 4640.0ft (RKB - 24')
Site:	Arellano 10-L Pad Sec.10-T5N-R65W	North Reference:	True
Well:	Arellano N-10-9HN	Survey Calculation Method:	Minimum Curvature
Wellbore:	Wellbore #1		
Design:	Plan #1 (12-10-14)		

Planned Survey									
Measured Depth (ft)	Inclination (°)	Azimuth (°)	Vertical Depth (ft)	+N/-S (ft)	+E/-W (ft)	Vertical Section (ft)	Dogleg Rate (°/100ft)	Build Rate (°/100ft)	Turn Rate (°/100ft)
9,600.0	90.09	269.64	6,881.9	225.2	-2,751.4	2,756.6	0.00	0.00	0.00
9,700.0	90.09	269.64	6,881.7	224.6	-2,851.4	2,856.5	0.00	0.00	0.00
9,800.0	90.09	269.64	6,881.6	223.9	-2,951.4	2,956.5	0.00	0.00	0.00
9,900.0	90.09	269.64	6,881.4	223.3	-3,051.4	3,056.4	0.00	0.00	0.00
10,000.0	90.09	269.64	6,881.2	222.7	-3,151.4	3,156.4	0.00	0.00	0.00
10,100.0	90.09	269.64	6,881.1	222.1	-3,251.4	3,256.3	0.00	0.00	0.00
10,200.0	90.09	269.64	6,880.9	221.4	-3,351.4	3,356.3	0.00	0.00	0.00
10,300.0	90.09	269.64	6,880.8	220.8	-3,451.4	3,456.2	0.00	0.00	0.00
10,400.0	90.09	269.64	6,880.6	220.2	-3,551.4	3,556.1	0.00	0.00	0.00
10,500.0	90.09	269.64	6,880.5	219.5	-3,651.4	3,656.1	0.00	0.00	0.00
10,600.0	90.09	269.64	6,880.3	218.9	-3,751.4	3,756.0	0.00	0.00	0.00
10,700.0	90.09	269.64	6,880.1	218.3	-3,851.4	3,856.0	0.00	0.00	0.00
10,800.0	90.09	269.64	6,880.0	217.7	-3,951.4	3,955.9	0.00	0.00	0.00
10,900.0	90.09	269.64	6,879.8	217.0	-4,051.4	4,055.9	0.00	0.00	0.00
11,000.0	90.09	269.64	6,879.7	216.4	-4,151.4	4,155.8	0.00	0.00	0.00
11,100.0	90.09	269.64	6,879.5	215.8	-4,251.4	4,255.7	0.00	0.00	0.00
11,200.0	90.09	269.64	6,879.4	215.2	-4,351.4	4,355.7	0.00	0.00	0.00
11,300.0	90.09	269.64	6,879.2	214.5	-4,451.4	4,455.6	0.00	0.00	0.00
11,400.0	90.09	269.64	6,879.0	213.9	-4,551.4	4,555.6	0.00	0.00	0.00
11,500.0	90.09	269.64	6,878.9	213.3	-4,651.4	4,655.5	0.00	0.00	0.00
11,600.0	90.09	269.64	6,878.7	212.7	-4,751.4	4,755.4	0.00	0.00	0.00
11,700.0	90.09	269.64	6,878.6	212.0	-4,851.4	4,855.4	0.00	0.00	0.00
11,800.0	90.09	269.64	6,878.4	211.4	-4,951.4	4,955.3	0.00	0.00	0.00
11,900.0	90.09	269.64	6,878.3	210.8	-5,051.4	5,055.3	0.00	0.00	0.00
12,000.0	90.09	269.64	6,878.1	210.2	-5,151.4	5,155.2	0.00	0.00	0.00
12,100.0	90.09	269.64	6,877.9	209.5	-5,251.4	5,255.2	0.00	0.00	0.00
12,200.0	90.09	269.64	6,877.8	208.9	-5,351.4	5,355.1	0.00	0.00	0.00
12,300.0	90.09	269.64	6,877.6	208.3	-5,451.4	5,455.0	0.00	0.00	0.00
12,400.0	90.09	269.64	6,877.5	207.6	-5,551.4	5,555.0	0.00	0.00	0.00
12,500.0	90.09	269.64	6,877.3	207.0	-5,651.4	5,654.9	0.00	0.00	0.00
12,600.0	90.09	269.64	6,877.2	206.4	-5,751.4	5,754.9	0.00	0.00	0.00
12,700.0	90.09	269.64	6,877.0	205.8	-5,851.4	5,854.8	0.00	0.00	0.00
12,800.0	90.09	269.64	6,876.8	205.1	-5,951.4	5,954.8	0.00	0.00	0.00
12,900.0	90.09	269.64	6,876.7	204.5	-6,051.4	6,054.7	0.00	0.00	0.00
13,000.0	90.09	269.64	6,876.5	203.9	-6,151.4	6,154.6	0.00	0.00	0.00
13,100.0	90.09	269.64	6,876.4	203.3	-6,251.3	6,254.6	0.00	0.00	0.00
13,200.0	90.09	269.64	6,876.2	202.6	-6,351.3	6,354.5	0.00	0.00	0.00
13,300.0	90.09	269.64	6,876.1	202.0	-6,451.3	6,454.5	0.00	0.00	0.00
13,400.0	90.09	269.64	6,875.9	201.4	-6,551.3	6,554.4	0.00	0.00	0.00
13,500.0	90.09	269.64	6,875.8	200.8	-6,651.3	6,654.3	0.00	0.00	0.00
13,600.0	90.09	269.64	6,875.6	200.1	-6,751.3	6,754.3	0.00	0.00	0.00
13,700.0	90.09	269.64	6,875.4	199.5	-6,851.3	6,854.2	0.00	0.00	0.00
13,800.0	90.09	269.64	6,875.3	198.9	-6,951.3	6,954.2	0.00	0.00	0.00
13,900.0	90.09	269.64	6,875.1	198.2	-7,051.3	7,054.1	0.00	0.00	0.00
13,977.6	90.09	269.64	6,875.0	197.8	-7,128.9	7,131.7	0.00	0.00	0.00
TD at 13977.6 - BHL 1820'FSL & 2170'FEL, Sec.9									

Database:	Landmark	Local Co-ordinate Reference:	Well Arellano N-10-9HN
Company:	Bayswater Exploration & Production, LLC	TVD Reference:	WELL @ 4640.0ft (RKB - 24')
Project:	SEC.10-T5N-R65W	MD Reference:	WELL @ 4640.0ft (RKB - 24')
Site:	Arellano 10-L Pad Sec.10-T5N-R65W	North Reference:	True
Well:	Arellano N-10-9HN	Survey Calculation Method:	Minimum Curvature
Wellbore:	Wellbore #1		
Design:	Plan #1 (12-10-14)		

Targets									
Target Name	Dip Angle (°)	Dip Dir. (°)	TVD (ft)	+N/-S (ft)	+E/-W (ft)	Northing (ft)	Easting (ft)	Latitude	Longitude
- hit/miss target									
- Shape									
BHL 1820'FSL & 2170'	0.00	0.00	6,875.0	197.8	-7,129.0	1,393,828.39	3,232,035.83	40.411468	-104.666715
- plan hits target center									
- Point									
SHL 1579'FSL & 303'f	0.00	0.00	1.0	0.0	0.0	1,393,699.70	3,239,166.35	40.410928	-104.641114
- plan hits target center									
- Point									

Casing Points				
Measured Depth (ft)	Vertical Depth (ft)	Name	Casing Diameter (")	Hole Diameter (")
7,315.4	6,885.5	7"	7	7-1/2

Plan Annotations				
Measured Depth (ft)	Vertical Depth (ft)	Local Coordinates +N/-S (ft)	+E/-W (ft)	Comment
1,600.0	1,600.0	0.0	0.0	KOP - Start Build 1.50
4,576.1	4,556.9	229.6	235.6	Start Drop -2.00
6,189.3	6,169.3	244.0	250.4	KOP #2 - Start Build 8.00
13,977.6	6,875.0	197.8	-7,128.9	TD at 13977.6