

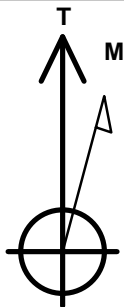
Bayswater Exploration & Production, LLC

Well Name: **Arellano K-10-9HN**

Surface Location: Arellano 10-L Pad Sec.10-T5N-R65W
 North American Datum 1983 , US State Plane 1983 , Colorado Northern Zone
 Ground Elevation: 4616.0
 +N/-S +E/-W Northing Easting Latitude Longitude Slot
 0.0 0.0 1393742.09 3239181.53 40.411044 -104.641058
 RKB - 24' WELL @ 4640.0ft (RKB - 24')

WELLBORE TARGET DETAILS

Name	TVD	+N/-S	+E/-W	Shape
SHL 1621'FSL & 287'FEL, Sec.10	1.0	0.0	0.0	Point
BHL 2480'FSL & 2170'FEL, Sec.9	6780.0	815.3	-7147.7	Point



Azimuths to True North
 Magnetic North: 8.34°

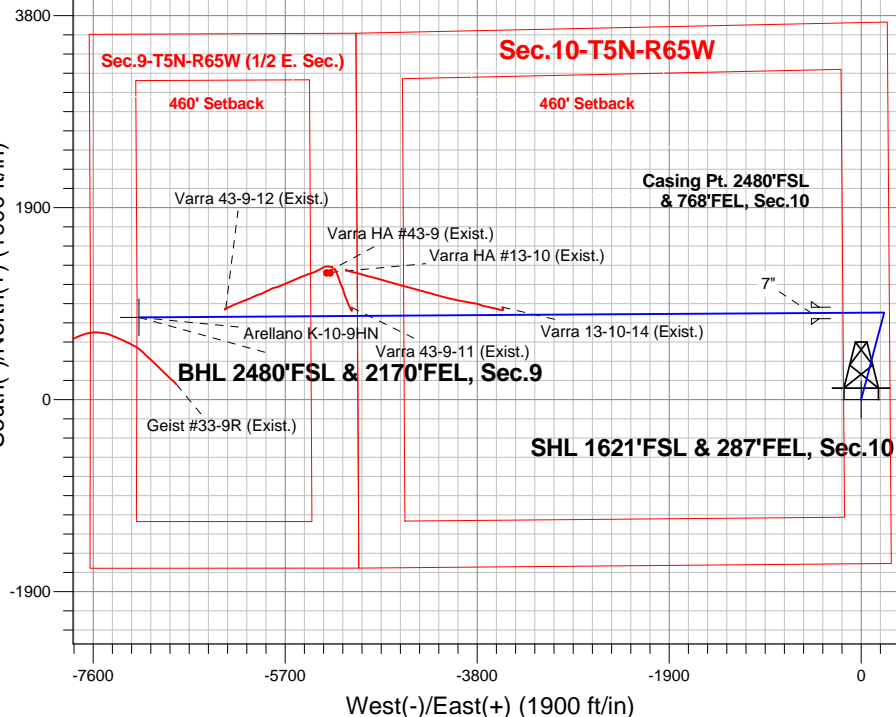
Magnetic Field
 Strength: 52792.8snT
 Dip Angle: 66.96°
 Date: 11/10/2014
 Model: IGRF2010

Arellano 10-L Pad Sec.10-T5N-R65W
 Arellano K-10-9HN
 Plan #1 (11-10-14)
 11:39, November 17 2014

ANNOTATIONS

TVD	MD	Annotation
200.0	200.0	KOP - Start Build 1.50
5408.8	5480.5	Start Drop -2.00
6084.7	6158.8	KOP #2 - Start Build 8.00
6780.0	13942.8	TD at 13942.8

South(-)/North(+) (1900 ft/in)

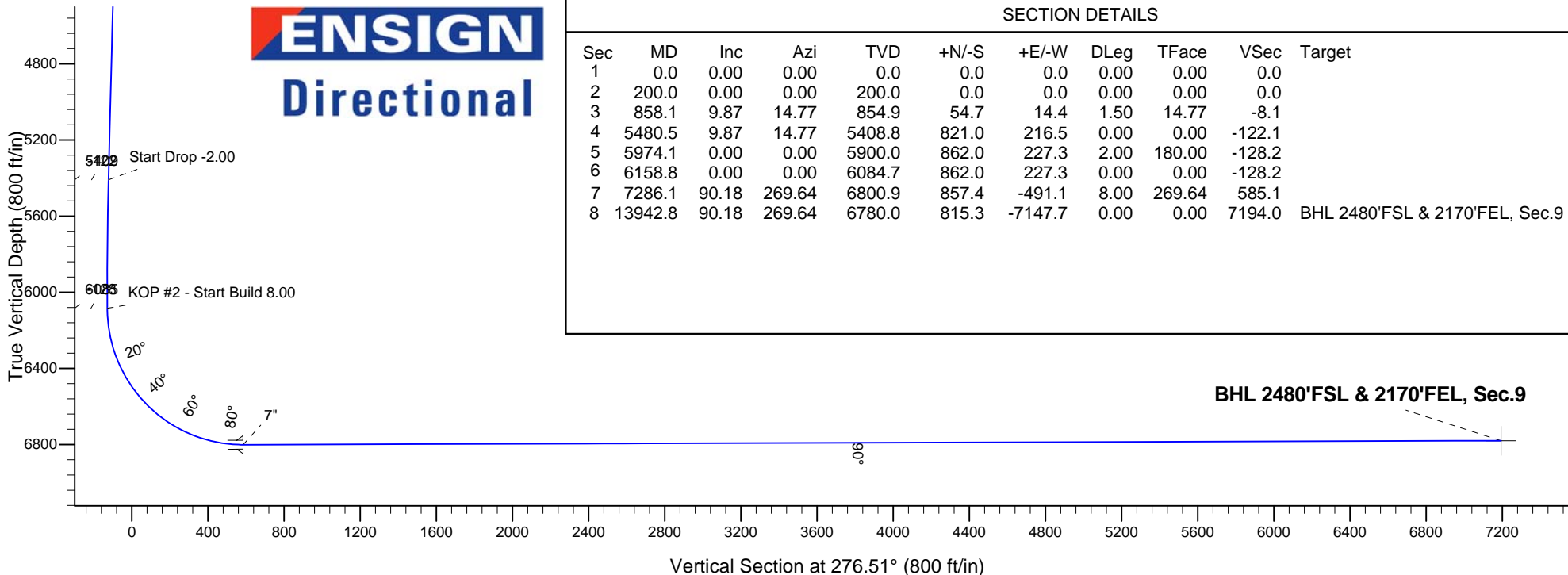


ENSIGN
 Directional

SECTION DETAILS

Sec	MD	Inc	Azi	TVD	+N/-S	+E/-W	DLeg	TFace	VSec	Target
1	0.0	0.00	0.00	0.0	0.0	0.0	0.00	0.00	0.0	
2	200.0	0.00	0.00	200.0	0.0	0.0	0.00	0.00	0.0	
3	858.1	9.87	14.77	854.9	54.7	14.4	1.50	14.77	-8.1	
4	5480.5	9.87	14.77	5408.8	821.0	216.5	0.00	0.00	-122.1	
5	5974.1	0.00	0.00	5900.0	862.0	227.3	2.00	180.00	-128.2	
6	6158.8	0.00	0.00	6084.7	862.0	227.3	0.00	0.00	-128.2	
7	7286.1	90.18	269.64	6800.9	857.4	-491.1	8.00	269.64	585.1	
8	13942.8	90.18	269.64	6780.0	815.3	-7147.7	0.00	0.00	7194.0	BHL 2480'FSL & 2170'FEL, Sec.9

BHL 2480'FSL & 2170'FEL, Sec.9





Bayswater Exploration & Production, LLC

SEC.10-T5N-R65W

Arellano 10-L Pad Sec.10-T5N-R65W

Arellano K-10-9HN

Wellbore #1

Plan: Plan #1 (11-10-14)

Standard Planning Report

17 November, 2014



BAYSWATER
EXPLORATION & PRODUCTION, LLC

Database:	Landmark	Local Co-ordinate Reference:	Well Arellano K-10-9HN
Company:	Bayswater Exploration & Production, LLC	TVD Reference:	WELL @ 4640.0ft (RKB - 24')
Project:	SEC.10-T5N-R65W	MD Reference:	WELL @ 4640.0ft (RKB - 24')
Site:	Arellano 10-L Pad Sec.10-T5N-R65W	North Reference:	True
Well:	Arellano K-10-9HN	Survey Calculation Method:	Minimum Curvature
Wellbore:	Wellbore #1		
Design:	Plan #1 (11-10-14)		

Project	SEC.10-T5N-R65W, Weld County, CO		
Map System:	US State Plane 1983	System Datum:	Mean Sea Level
Geo Datum:	North American Datum 1983		Using Well Reference Point
Map Zone:	Colorado Northern Zone		

Site	Arellano 10-L Pad Sec.10-T5N-R65W				
Site Position:		Northing:	1,393,742.11 ft	Latitude:	40.411044
From:	Lat/Long	Easting:	3,239,181.53ft	Longitude:	-104.641058
Position Uncertainty:	0.0 ft	Slot Radius:	"	Grid Convergence:	0.55 °

Well	Arellano K-10-9HN					
Well Position	+N-S	0.0 ft	Northing:	1,393,742.09 ft	Latitude:	40.411044
	+E-W	0.0 ft	Easting:	3,239,181.53 ft	Longitude:	-104.641058
Position Uncertainty		0.0 ft	Wellhead Elevation:	ft	Ground Level:	4,616.0 ft

Wellbore	Wellbore #1				
Magnetics	Model Name	Sample Date	Declination (°)	Dip Angle (°)	Field Strength (nT)
	IGRF2010	11/10/2014	8.34	66.96	52,793

Design	Plan #1 (11-10-14)			
Audit Notes:				
Version:	Phase:	PROTOTYPE	Tie On Depth:	0.0
Vertical Section:	Depth From (TVD) (ft)	+N/-S (ft)	+E/-W (ft)	Direction (°)
	0.0	0.0	0.0	276.51

Plan Sections										
Measured Depth (ft)	Inclination (°)	Azimuth (°)	Vertical Depth (ft)	+N/-S (ft)	+E/-W (ft)	Dogleg Rate (°/100ft)	Build Rate (°/100ft)	Turn Rate (°/100ft)	TFO (°)	Target
0.0	0.00	0.00	0.0	0.0	0.0	0.00	0.00	0.00	0.00	
200.0	0.00	0.00	200.0	0.0	0.0	0.00	0.00	0.00	0.00	
858.1	9.87	14.77	854.9	54.7	14.4	1.50	1.50	0.00	14.77	
5,480.5	9.87	14.77	5,408.8	821.0	216.5	0.00	0.00	0.00	0.00	
5,974.1	0.00	0.00	5,900.0	862.0	227.3	2.00	-2.00	0.00	180.00	
6,158.8	0.00	0.00	6,084.7	862.0	227.3	0.00	0.00	0.00	0.00	
7,286.1	90.18	269.64	6,800.9	857.4	-491.1	8.00	8.00	0.00	269.64	
13,942.8	90.18	269.64	6,780.0	815.3	-7,147.7	0.00	0.00	0.00	0.00	BHL 2480'FSL & 21

Database:	Landmark	Local Co-ordinate Reference:	Well Arellano K-10-9HN
Company:	Bayswater Exploration & Production, LLC	TVD Reference:	WELL @ 4640.0ft (RKB - 24')
Project:	SEC.10-T5N-R65W	MD Reference:	WELL @ 4640.0ft (RKB - 24')
Site:	Arellano 10-L Pad Sec.10-T5N-R65W	North Reference:	True
Well:	Arellano K-10-9HN	Survey Calculation Method:	Minimum Curvature
Wellbore:	Wellbore #1		
Design:	Plan #1 (11-10-14)		

Planned Survey									
Measured Depth (ft)	Inclination (°)	Azimuth (°)	Vertical Depth (ft)	+N/-S (ft)	+E/-W (ft)	Vertical Section (ft)	Dogleg Rate (°/100ft)	Build Rate (°/100ft)	Turn Rate (°/100ft)
0.0	0.00	0.00	0.0	0.0	0.0	0.0	0.00	0.00	0.00
100.0	0.00	0.00	100.0	0.0	0.0	0.0	0.00	0.00	0.00
200.0	0.00	0.00	200.0	0.0	0.0	0.0	0.00	0.00	0.00
KOP - Start Build 1.50									
300.0	1.50	14.77	300.0	1.3	0.3	-0.2	1.50	1.50	0.00
400.0	3.00	14.77	399.9	5.1	1.3	-0.8	1.50	1.50	0.00
500.0	4.50	14.77	499.7	11.4	3.0	-1.7	1.50	1.50	0.00
600.0	6.00	14.77	599.3	20.2	5.3	-3.0	1.50	1.50	0.00
700.0	7.50	14.77	698.6	31.6	8.3	-4.7	1.50	1.50	0.00
800.0	9.00	14.77	797.5	45.5	12.0	-6.8	1.50	1.50	0.00
858.1	9.87	14.77	854.9	54.7	14.4	-8.1	1.50	1.50	0.00
900.0	9.87	14.77	896.1	61.6	16.3	-9.2	0.00	0.00	0.00
1,000.0	9.87	14.77	994.6	78.2	20.6	-11.6	0.00	0.00	0.00
1,100.0	9.87	14.77	1,093.2	94.8	25.0	-14.1	0.00	0.00	0.00
1,200.0	9.87	14.77	1,191.7	111.4	29.4	-16.6	0.00	0.00	0.00
1,300.0	9.87	14.77	1,290.2	127.9	33.7	-19.0	0.00	0.00	0.00
1,400.0	9.87	14.77	1,388.7	144.5	38.1	-21.5	0.00	0.00	0.00
1,500.0	9.87	14.77	1,487.2	161.1	42.5	-23.9	0.00	0.00	0.00
1,600.0	9.87	14.77	1,585.8	177.7	46.9	-26.4	0.00	0.00	0.00
1,700.0	9.87	14.77	1,684.3	194.3	51.2	-28.9	0.00	0.00	0.00
1,800.0	9.87	14.77	1,782.8	210.8	55.6	-31.3	0.00	0.00	0.00
1,900.0	9.87	14.77	1,881.3	227.4	60.0	-33.8	0.00	0.00	0.00
2,000.0	9.87	14.77	1,979.8	244.0	64.3	-36.3	0.00	0.00	0.00
2,100.0	9.87	14.77	2,078.4	260.6	68.7	-38.7	0.00	0.00	0.00
2,200.0	9.87	14.77	2,176.9	277.1	73.1	-41.2	0.00	0.00	0.00
2,300.0	9.87	14.77	2,275.4	293.7	77.5	-43.7	0.00	0.00	0.00
2,400.0	9.87	14.77	2,373.9	310.3	81.8	-46.1	0.00	0.00	0.00
2,500.0	9.87	14.77	2,472.4	326.9	86.2	-48.6	0.00	0.00	0.00
2,600.0	9.87	14.77	2,571.0	343.5	90.6	-51.1	0.00	0.00	0.00
2,700.0	9.87	14.77	2,669.5	360.0	94.9	-53.5	0.00	0.00	0.00
2,800.0	9.87	14.77	2,768.0	376.6	99.3	-56.0	0.00	0.00	0.00
2,900.0	9.87	14.77	2,866.5	393.2	103.7	-58.5	0.00	0.00	0.00
3,000.0	9.87	14.77	2,965.0	409.8	108.1	-60.9	0.00	0.00	0.00
3,100.0	9.87	14.77	3,063.6	426.3	112.4	-63.4	0.00	0.00	0.00
3,200.0	9.87	14.77	3,162.1	442.9	116.8	-65.8	0.00	0.00	0.00
3,300.0	9.87	14.77	3,260.6	459.5	121.2	-68.3	0.00	0.00	0.00
3,400.0	9.87	14.77	3,359.1	476.1	125.5	-70.8	0.00	0.00	0.00
3,500.0	9.87	14.77	3,457.6	492.7	129.9	-73.2	0.00	0.00	0.00
3,600.0	9.87	14.77	3,556.2	509.2	134.3	-75.7	0.00	0.00	0.00
3,700.0	9.87	14.77	3,654.7	525.8	138.7	-78.2	0.00	0.00	0.00
3,800.0	9.87	14.77	3,753.2	542.4	143.0	-80.6	0.00	0.00	0.00
3,900.0	9.87	14.77	3,851.7	559.0	147.4	-83.1	0.00	0.00	0.00
4,000.0	9.87	14.77	3,950.2	575.5	151.8	-85.6	0.00	0.00	0.00
4,100.0	9.87	14.77	4,048.7	592.1	156.1	-88.0	0.00	0.00	0.00
4,200.0	9.87	14.77	4,147.3	608.7	160.5	-90.5	0.00	0.00	0.00
4,300.0	9.87	14.77	4,245.8	625.3	164.9	-93.0	0.00	0.00	0.00
4,400.0	9.87	14.77	4,344.3	641.9	169.3	-95.4	0.00	0.00	0.00
4,500.0	9.87	14.77	4,442.8	658.4	173.6	-97.9	0.00	0.00	0.00
4,600.0	9.87	14.77	4,541.3	675.0	178.0	-100.4	0.00	0.00	0.00
4,700.0	9.87	14.77	4,639.9	691.6	182.4	-102.8	0.00	0.00	0.00
4,800.0	9.87	14.77	4,738.4	708.2	186.7	-105.3	0.00	0.00	0.00
4,900.0	9.87	14.77	4,836.9	724.7	191.1	-107.7	0.00	0.00	0.00
5,000.0	9.87	14.77	4,935.4	741.3	195.5	-110.2	0.00	0.00	0.00
5,100.0	9.87	14.77	5,033.9	757.9	199.8	-112.7	0.00	0.00	0.00

Database:	Landmark	Local Co-ordinate Reference:	Well Arellano K-10-9HN
Company:	Bayswater Exploration & Production, LLC	TVD Reference:	WELL @ 4640.0ft (RKB - 24')
Project:	SEC.10-T5N-R65W	MD Reference:	WELL @ 4640.0ft (RKB - 24')
Site:	Arellano 10-L Pad Sec.10-T5N-R65W	North Reference:	True
Well:	Arellano K-10-9HN	Survey Calculation Method:	Minimum Curvature
Wellbore:	Wellbore #1		
Design:	Plan #1 (11-10-14)		

Planned Survey									
Measured Depth (ft)	Inclination (°)	Azimuth (°)	Vertical Depth (ft)	+N/-S (ft)	+E/-W (ft)	Vertical Section (ft)	Dogleg Rate (°/100ft)	Build Rate (°/100ft)	Turn Rate (°/100ft)
5,200.0	9.87	14.77	5,132.5	774.5	204.2	-115.1	0.00	0.00	0.00
5,300.0	9.87	14.77	5,231.0	791.1	208.6	-117.6	0.00	0.00	0.00
5,400.0	9.87	14.77	5,329.5	807.6	213.0	-120.1	0.00	0.00	0.00
5,480.5	9.87	14.77	5,408.8	821.0	216.5	-122.1	0.00	0.00	0.00
Start Drop -2.00									
5,500.0	9.48	14.77	5,428.0	824.1	217.3	-122.5	2.00	-2.00	0.00
5,600.0	7.48	14.77	5,526.9	838.4	221.1	-124.6	2.00	-2.00	0.00
5,700.0	5.48	14.77	5,626.3	849.3	224.0	-126.3	2.00	-2.00	0.00
5,800.0	3.48	14.77	5,726.0	856.9	226.0	-127.4	2.00	-2.00	0.00
5,900.0	1.48	14.77	5,825.9	861.1	227.1	-128.0	2.00	-2.00	0.00
5,974.1	0.00	0.00	5,900.0	862.0	227.3	-128.2	2.00	-2.00	0.00
6,000.0	0.00	0.00	5,925.9	862.0	227.3	-128.2	0.00	0.00	0.00
6,100.0	0.00	0.00	6,025.9	862.0	227.3	-128.2	0.00	0.00	0.00
6,158.8	0.00	0.00	6,084.7	862.0	227.3	-128.2	0.00	0.00	0.00
KOP #2 - Start Build 8.00									
6,200.0	3.29	269.64	6,125.8	862.0	226.1	-127.0	7.99	7.99	0.00
6,300.0	11.29	269.64	6,225.0	861.9	213.4	-114.4	8.00	8.00	0.00
6,400.0	19.29	269.64	6,321.3	861.7	187.1	-88.2	8.00	8.00	0.00
6,500.0	27.29	269.64	6,413.1	861.5	147.6	-49.0	8.00	8.00	0.00
6,600.0	35.29	269.64	6,498.5	861.2	95.7	2.5	8.00	8.00	0.00
6,700.0	43.29	269.64	6,575.8	860.8	32.4	65.4	8.00	8.00	0.00
6,800.0	51.29	269.64	6,643.6	860.3	-41.0	138.2	8.00	8.00	0.00
6,900.0	59.29	269.64	6,700.5	859.8	-123.2	219.8	8.00	8.00	0.00
7,000.0	67.29	269.64	6,745.4	859.2	-212.4	308.4	8.00	8.00	0.00
7,100.0	75.29	269.64	6,777.4	858.6	-307.0	402.4	8.00	8.00	0.00
7,200.0	83.29	269.64	6,796.0	858.0	-405.2	499.8	8.00	8.00	0.00
7,286.1	90.18	269.64	6,800.9	857.4	-491.1	585.1	8.00	8.00	0.00
7"									
7,300.0	90.18	269.64	6,800.9	857.4	-505.0	598.9	0.00	0.00	0.00
7,400.0	90.18	269.64	6,800.6	856.7	-605.0	698.2	0.00	0.00	0.00
7,500.0	90.18	269.64	6,800.2	856.1	-705.0	797.5	0.00	0.00	0.00
7,600.0	90.18	269.64	6,799.9	855.5	-805.0	896.8	0.00	0.00	0.00
7,700.0	90.18	269.64	6,799.6	854.8	-905.0	996.1	0.00	0.00	0.00
7,800.0	90.18	269.64	6,799.3	854.2	-1,005.0	1,095.3	0.00	0.00	0.00
7,900.0	90.18	269.64	6,799.0	853.6	-1,105.0	1,194.6	0.00	0.00	0.00
8,000.0	90.18	269.64	6,798.7	852.9	-1,205.0	1,293.9	0.00	0.00	0.00
8,100.0	90.18	269.64	6,798.4	852.3	-1,305.0	1,393.2	0.00	0.00	0.00
8,200.0	90.18	269.64	6,798.0	851.7	-1,405.0	1,492.5	0.00	0.00	0.00
8,300.0	90.18	269.64	6,797.7	851.0	-1,505.0	1,591.8	0.00	0.00	0.00
8,400.0	90.18	269.64	6,797.4	850.4	-1,605.0	1,691.0	0.00	0.00	0.00
8,500.0	90.18	269.64	6,797.1	849.8	-1,705.0	1,790.3	0.00	0.00	0.00
8,600.0	90.18	269.64	6,796.8	849.1	-1,805.0	1,889.6	0.00	0.00	0.00
8,700.0	90.18	269.64	6,796.5	848.5	-1,905.0	1,988.9	0.00	0.00	0.00
8,800.0	90.18	269.64	6,796.2	847.9	-2,005.0	2,088.2	0.00	0.00	0.00
8,900.0	90.18	269.64	6,795.8	847.2	-2,105.0	2,187.4	0.00	0.00	0.00
9,000.0	90.18	269.64	6,795.5	846.6	-2,205.0	2,286.7	0.00	0.00	0.00
9,100.0	90.18	269.64	6,795.2	846.0	-2,305.0	2,386.0	0.00	0.00	0.00
9,200.0	90.18	269.64	6,794.9	845.3	-2,405.0	2,485.3	0.00	0.00	0.00
9,300.0	90.18	269.64	6,794.6	844.7	-2,505.0	2,584.6	0.00	0.00	0.00
9,400.0	90.18	269.64	6,794.3	844.0	-2,605.0	2,683.9	0.00	0.00	0.00
9,500.0	90.18	269.64	6,794.0	843.4	-2,705.0	2,783.1	0.00	0.00	0.00
9,600.0	90.18	269.64	6,793.6	842.8	-2,805.0	2,882.4	0.00	0.00	0.00
9,700.0	90.18	269.64	6,793.3	842.1	-2,905.0	2,981.7	0.00	0.00	0.00

Database:	Landmark	Local Co-ordinate Reference:	Well Arellano K-10-9HN
Company:	Bayswater Exploration & Production, LLC	TVD Reference:	WELL @ 4640.0ft (RKB - 24')
Project:	SEC.10-T5N-R65W	MD Reference:	WELL @ 4640.0ft (RKB - 24')
Site:	Arellano 10-L Pad Sec.10-T5N-R65W	North Reference:	True
Well:	Arellano K-10-9HN	Survey Calculation Method:	Minimum Curvature
Wellbore:	Wellbore #1		
Design:	Plan #1 (11-10-14)		

Planned Survey									
Measured Depth (ft)	Inclination (°)	Azimuth (°)	Vertical Depth (ft)	+N/-S (ft)	+E/-W (ft)	Vertical Section (ft)	Dogleg Rate (°/100ft)	Build Rate (°/100ft)	Turn Rate (°/100ft)
9,800.0	90.18	269.64	6,793.0	841.5	-3,005.0	3,081.0	0.00	0.00	0.00
9,900.0	90.18	269.64	6,792.7	840.9	-3,105.0	3,180.3	0.00	0.00	0.00
10,000.0	90.18	269.64	6,792.4	840.2	-3,205.0	3,279.5	0.00	0.00	0.00
10,100.0	90.18	269.64	6,792.1	839.6	-3,305.0	3,378.8	0.00	0.00	0.00
10,200.0	90.18	269.64	6,791.8	839.0	-3,405.0	3,478.1	0.00	0.00	0.00
10,300.0	90.18	269.64	6,791.4	838.3	-3,505.0	3,577.4	0.00	0.00	0.00
10,400.0	90.18	269.64	6,791.1	837.7	-3,605.0	3,676.7	0.00	0.00	0.00
10,500.0	90.18	269.64	6,790.8	837.1	-3,705.0	3,775.9	0.00	0.00	0.00
10,600.0	90.18	269.64	6,790.5	836.4	-3,805.0	3,875.2	0.00	0.00	0.00
10,700.0	90.18	269.64	6,790.2	835.8	-3,904.9	3,974.5	0.00	0.00	0.00
10,800.0	90.18	269.64	6,789.9	835.2	-4,004.9	4,073.8	0.00	0.00	0.00
10,900.0	90.18	269.64	6,789.6	834.5	-4,104.9	4,173.1	0.00	0.00	0.00
11,000.0	90.18	269.64	6,789.2	833.9	-4,204.9	4,272.4	0.00	0.00	0.00
11,100.0	90.18	269.64	6,788.9	833.3	-4,304.9	4,371.6	0.00	0.00	0.00
11,200.0	90.18	269.64	6,788.6	832.6	-4,404.9	4,470.9	0.00	0.00	0.00
11,300.0	90.18	269.64	6,788.3	832.0	-4,504.9	4,570.2	0.00	0.00	0.00
11,400.0	90.18	269.64	6,788.0	831.4	-4,604.9	4,669.5	0.00	0.00	0.00
11,500.0	90.18	269.64	6,787.7	830.7	-4,704.9	4,768.8	0.00	0.00	0.00
11,600.0	90.18	269.64	6,787.4	830.1	-4,804.9	4,868.0	0.00	0.00	0.00
11,700.0	90.18	269.64	6,787.0	829.5	-4,904.9	4,967.3	0.00	0.00	0.00
11,800.0	90.18	269.64	6,786.7	828.8	-5,004.9	5,066.6	0.00	0.00	0.00
11,900.0	90.18	269.64	6,786.4	828.2	-5,104.9	5,165.9	0.00	0.00	0.00
12,000.0	90.18	269.64	6,786.1	827.6	-5,204.9	5,265.2	0.00	0.00	0.00
12,100.0	90.18	269.64	6,785.8	826.9	-5,304.9	5,364.5	0.00	0.00	0.00
12,200.0	90.18	269.64	6,785.5	826.3	-5,404.9	5,463.7	0.00	0.00	0.00
12,300.0	90.18	269.64	6,785.2	825.7	-5,504.9	5,563.0	0.00	0.00	0.00
12,400.0	90.18	269.64	6,784.8	825.0	-5,604.9	5,662.3	0.00	0.00	0.00
12,500.0	90.18	269.64	6,784.5	824.4	-5,704.9	5,761.6	0.00	0.00	0.00
12,600.0	90.18	269.64	6,784.2	823.8	-5,804.9	5,860.9	0.00	0.00	0.00
12,700.0	90.18	269.64	6,783.9	823.1	-5,904.9	5,960.1	0.00	0.00	0.00
12,800.0	90.18	269.64	6,783.6	822.5	-6,004.9	6,059.4	0.00	0.00	0.00
12,900.0	90.18	269.64	6,783.3	821.9	-6,104.9	6,158.7	0.00	0.00	0.00
13,000.0	90.18	269.64	6,783.0	821.2	-6,204.9	6,258.0	0.00	0.00	0.00
13,100.0	90.18	269.64	6,782.6	820.6	-6,304.9	6,357.3	0.00	0.00	0.00
13,200.0	90.18	269.64	6,782.3	820.0	-6,404.9	6,456.5	0.00	0.00	0.00
13,300.0	90.18	269.64	6,782.0	819.3	-6,504.9	6,555.8	0.00	0.00	0.00
13,400.0	90.18	269.64	6,781.7	818.7	-6,604.9	6,655.1	0.00	0.00	0.00
13,500.0	90.18	269.64	6,781.4	818.1	-6,704.9	6,754.4	0.00	0.00	0.00
13,600.0	90.18	269.64	6,781.1	817.4	-6,804.9	6,853.7	0.00	0.00	0.00
13,700.0	90.18	269.64	6,780.8	816.8	-6,904.9	6,953.0	0.00	0.00	0.00
13,800.0	90.18	269.64	6,780.4	816.2	-7,004.9	7,052.2	0.00	0.00	0.00
13,900.0	90.18	269.64	6,780.1	815.5	-7,104.9	7,151.5	0.00	0.00	0.00
13,942.8	90.18	269.64	6,780.0	815.3	-7,147.7	7,194.0	0.00	0.00	0.00
TD at 13942.8									

Database:	Landmark	Local Co-ordinate Reference:	Well Arellano K-10-9HN
Company:	Bayswater Exploration & Production, LLC	TVD Reference:	WELL @ 4640.0ft (RKB - 24')
Project:	SEC.10-T5N-R65W	MD Reference:	WELL @ 4640.0ft (RKB - 24')
Site:	Arellano 10-L Pad Sec.10-T5N-R65W	North Reference:	True
Well:	Arellano K-10-9HN	Survey Calculation Method:	Minimum Curvature
Wellbore:	Wellbore #1		
Design:	Plan #1 (11-10-14)		

Targets									
Target Name									
- hit/miss target	Dip Angle	Dip Dir.	TVD	+N/-S	+E/-W	Northing	Easting	Latitude	Longitude
- Shape	(°)	(°)	(ft)	(ft)	(ft)	(ft)	(ft)		
BHL 2480'FSL & 2170'	0.00	0.00	6,780.0	815.3	-7,147.7	1,394,488.07	3,232,026.29	40.413279	-104.666727
- plan hits target center									
- Point									
SHL 1621'FSL & 2871'	0.00	0.00	1.0	0.0	0.0	1,393,742.11	3,239,181.53	40.411044	-104.641058
- plan hits target center									
- Point									

Casing Points					
Measured Depth	Vertical Depth			Casing Diameter	Hole Diameter
(ft)	(ft)		Name	(")	(")
7,286.1	6,800.9	7"		7	7-1/2

Plan Annotations				
Measured Depth	Vertical Depth	Local Coordinates		Comment
(ft)	(ft)	+N/-S (ft)	+E/-W (ft)	
200.0	200.0	0.0	0.0	KOP - Start Build 1.50
5,480.5	5,408.8	821.0	216.5	Start Drop -2.00
6,158.8	6,084.7	862.0	227.3	KOP #2 - Start Build 8.00
13,942.8	6,780.0	815.3	-7,147.7	TD at 13942.8