

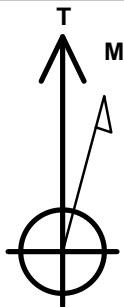
Bayswater Exploration & Production, LLC

Well Name: **Arellano P-10-9HN**

Surface Location: Arellano 10-L Pad Sec.10-T5N-R65W
 North American Datum 1983 , US State Plane 1983 , Colorado Northern Zone
 Ground Elevation: 4616.0
 +N/-S +E/-W Northing Easting Latitude Longitude Slot
 0.0 0.0 1393671.17 3239156.04 40.410850 -104.641152
 RKB - 24' WELL @ 4640.0ft (RKB - 24')

WELLBORE TARGET DETAILS

Name	TVD	+N/-S	+E/-W	Shape
SHL 1550'FSL & 314'FEL, Sec.10	1.0	0.0	0.0	Point
BHL 1160'FSL & 2170'FEL, Sec.9	6788.0	-433.9	-7115.2	Point



Azimuths to True North
 Magnetic North: 8.34°

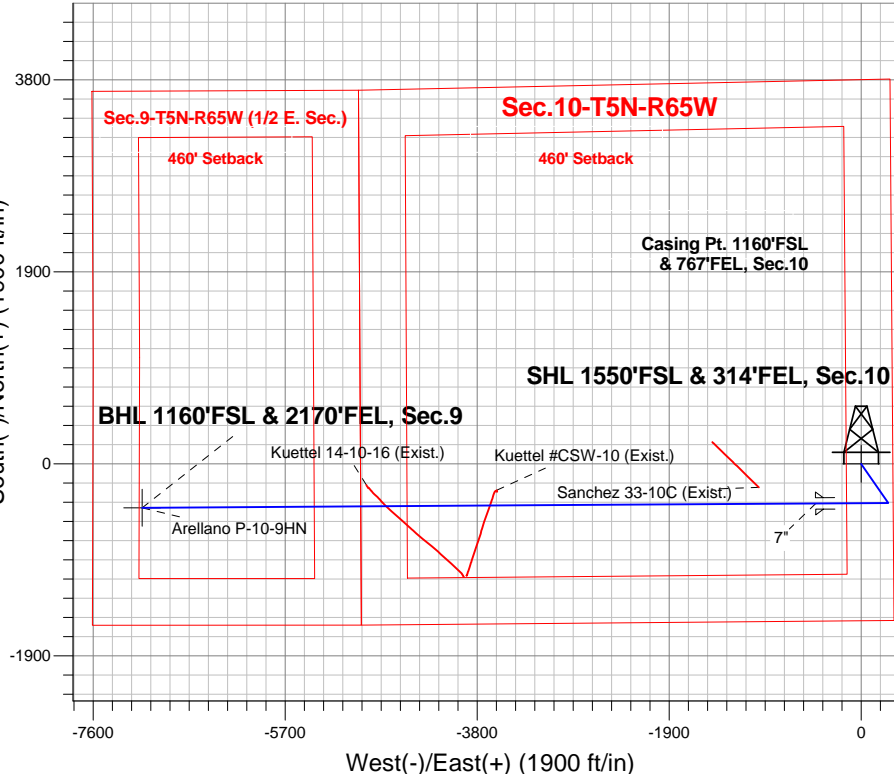
Magnetic Field
 Strength: 52792.4snT
 Dip Angle: 66.96°
 Date: 11/11/2014
 Model: IGRF2010

Arellano 10-L Pad Sec.10-T5N-R65W
 Arellano P-10-9HN
 Plan #1 (11-11-14)
 17:32, November 17 2014

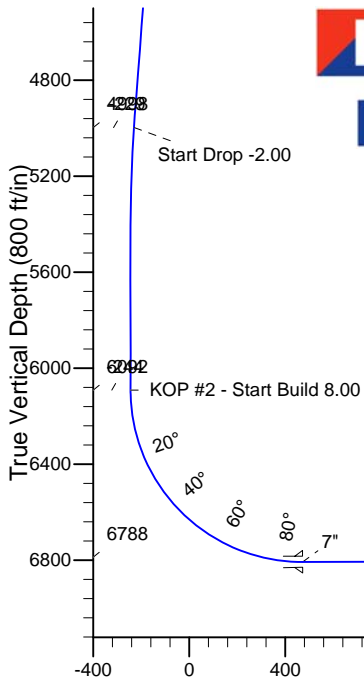
ANNOTATIONS

TVD	MD	Annotation
1600.0	1600.0	KOP - Start Build 1.50
4998.1	5028.4	Start Drop -2.00
6091.6	6123.3	KOP #2 - Start Build 8.00
6788.0	13915.7	TD at 13915.7

South(-)/North(+) (1900 ft/in)



West(-)/East(+) (1900 ft/in)



SECTION DETAILS

Sec	MD	Inc	Azi	TVD	+N/-S	+E/-W	DLeg	TFace	VSec	Target
1	0.0	0.00	0.00	0.0	0.0	0.0	0.00	0.00	0.0	
2	1600.0	0.00	0.00	1600.0	0.0	0.0	0.00	0.00	0.0	
3	2137.7	8.06	145.35	2135.9	-31.1	21.5	1.50	145.35	-19.5	
4	5028.4	8.06	145.35	4998.1	-364.7	252.1	0.00	0.00	-229.4	
5	5431.7	0.00	0.00	5400.0	-388.0	268.2	2.00	180.00	-244.1	
6	6123.3	0.00	0.00	6091.6	-388.0	268.2	0.00	0.00	-244.1	
7	7250.4	90.17	269.64	6807.8	-392.5	-450.1	8.00	269.64	473.2	
8	13915.7	90.17	269.64	6788.0	-433.9	-7115.2	0.00	0.00	7128.4	BHL 1160'FSL & 2170'FEL, Sec.9

BHL 1160'FSL & 2170'FEL, Sec.9

Vertical Section at 266.51° (800 ft/in)



Bayswater Exploration & Production, LLC

SEC.10-T5N-R65W

Arellano 10-L Pad Sec.10-T5N-R65W

Arellano P-10-9HN

Wellbore #1

Plan: Plan #1 (11-11-14)

Standard Planning Report

17 November, 2014



BAYSWATER
EXPLORATION & PRODUCTION, LLC

Database:	Landmark	Local Co-ordinate Reference:	Well Arellano P-10-9HN
Company:	Bayswater Exploration & Production, LLC	TVD Reference:	WELL @ 4640.0ft (RKB - 24')
Project:	SEC.10-T5N-R65W	MD Reference:	WELL @ 4640.0ft (RKB - 24')
Site:	Arellano 10-L Pad Sec.10-T5N-R65W	North Reference:	True
Well:	Arellano P-10-9HN	Survey Calculation Method:	Minimum Curvature
Wellbore:	Wellbore #1		
Design:	Plan #1 (11-11-14)		

Project	SEC.10-T5N-R65W, Weld County, CO		
Map System:	US State Plane 1983	System Datum:	Mean Sea Level
Geo Datum:	North American Datum 1983		Using Well Reference Point
Map Zone:	Colorado Northern Zone		

Site		Arellano 10-L Pad Sec.10-T5N-R65W				
Site Position:		Northing:	1,393,742.11 ft	Latitude:	40.411044	
From:	Lat/Long	Easting:	3,239,181.53ft	Longitude:	-104.641058	
Position Uncertainty:		0.0 ft	Slot Radius:	"	Grid Convergence:	0.55 °

Well	Arellano P-10-9HN					
Well Position	+N-S	-70.7 ft	Northing:	1,393,671.17 ft	Latitude:	40.410850
	+E-W	-26.2 ft	Easting:	3,239,156.04 ft	Longitude:	-104.641152
Position Uncertainty		0.0 ft	Wellhead Elevation:	ft	Ground Level:	4,616.0 ft

Wellbore	Wellbore #1				
Magnetics	Model Name	Sample Date	Declination (°)	Dip Angle (°)	Field Strength (nT)
	IGRF2010	11/11/2014	8.34	66.96	52,792

Design	Plan #1 (11-11-14)			
Audit Notes:				
Version:	Phase:	PROTOTYPE	Tie On Depth:	0.0
Vertical Section:	Depth From (TVD) (ft)	+N/-S (ft)	+E/-W (ft)	Direction (°)
	0.0	0.0	0.0	266.51

Plan Sections										
Measured Depth (ft)	Inclination (°)	Azimuth (°)	Vertical Depth (ft)	+N/-S (ft)	+E/-W (ft)	Dogleg Rate (°/100ft)	Build Rate (°/100ft)	Turn Rate (°/100ft)	TFO (°)	Target
0.0	0.00	0.00	0.0	0.0	0.0	0.00	0.00	0.00	0.00	
1,600.0	0.00	0.00	1,600.0	0.0	0.0	0.00	0.00	0.00	0.00	
2,137.7	8.06	145.35	2,135.9	-31.1	21.5	1.50	1.50	0.00	145.35	
5,028.4	8.06	145.35	4,998.1	-364.7	252.1	0.00	0.00	0.00	0.00	
5,431.7	0.00	0.00	5,400.0	-388.0	268.2	2.00	-2.00	0.00	180.00	
6,123.3	0.00	0.00	6,091.6	-388.0	268.2	0.00	0.00	0.00	0.00	
7,250.4	90.17	269.64	6,807.8	-392.5	-450.1	8.00	8.00	0.00	269.64	
13,915.7	90.17	269.64	6,788.0	-433.9	-7,115.2	0.00	0.00	0.00	0.00	BHL 1160'FSL & 21

Database:	Landmark	Local Co-ordinate Reference:	Well Arellano P-10-9HN
Company:	Bayswater Exploration & Production, LLC	TVD Reference:	WELL @ 4640.0ft (RKB - 24')
Project:	SEC.10-T5N-R65W	MD Reference:	WELL @ 4640.0ft (RKB - 24')
Site:	Arellano 10-L Pad Sec.10-T5N-R65W	North Reference:	True
Well:	Arellano P-10-9HN	Survey Calculation Method:	Minimum Curvature
Wellbore:	Wellbore #1		
Design:	Plan #1 (11-11-14)		

Planned Survey									
Measured Depth (ft)	Inclination (°)	Azimuth (°)	Vertical Depth (ft)	+N/-S (ft)	+E/-W (ft)	Vertical Section (ft)	Dogleg Rate (°/100ft)	Build Rate (°/100ft)	Turn Rate (°/100ft)
0.0	0.00	0.00	0.0	0.0	0.0	0.0	0.00	0.00	0.00
100.0	0.00	0.00	100.0	0.0	0.0	0.0	0.00	0.00	0.00
200.0	0.00	0.00	200.0	0.0	0.0	0.0	0.00	0.00	0.00
300.0	0.00	0.00	300.0	0.0	0.0	0.0	0.00	0.00	0.00
400.0	0.00	0.00	400.0	0.0	0.0	0.0	0.00	0.00	0.00
500.0	0.00	0.00	500.0	0.0	0.0	0.0	0.00	0.00	0.00
600.0	0.00	0.00	600.0	0.0	0.0	0.0	0.00	0.00	0.00
700.0	0.00	0.00	700.0	0.0	0.0	0.0	0.00	0.00	0.00
800.0	0.00	0.00	800.0	0.0	0.0	0.0	0.00	0.00	0.00
900.0	0.00	0.00	900.0	0.0	0.0	0.0	0.00	0.00	0.00
1,000.0	0.00	0.00	1,000.0	0.0	0.0	0.0	0.00	0.00	0.00
1,100.0	0.00	0.00	1,100.0	0.0	0.0	0.0	0.00	0.00	0.00
1,200.0	0.00	0.00	1,200.0	0.0	0.0	0.0	0.00	0.00	0.00
1,300.0	0.00	0.00	1,300.0	0.0	0.0	0.0	0.00	0.00	0.00
1,400.0	0.00	0.00	1,400.0	0.0	0.0	0.0	0.00	0.00	0.00
1,500.0	0.00	0.00	1,500.0	0.0	0.0	0.0	0.00	0.00	0.00
1,600.0	0.00	0.00	1,600.0	0.0	0.0	0.0	0.00	0.00	0.00
KOP - Start Build 1.50									
1,700.0	1.50	145.35	1,700.0	-1.1	0.7	-0.7	1.50	1.50	0.00
1,800.0	3.00	145.35	1,799.9	-4.3	3.0	-2.7	1.50	1.50	0.00
1,900.0	4.50	145.35	1,899.7	-9.7	6.7	-6.1	1.50	1.50	0.00
2,000.0	6.00	145.35	1,999.3	-17.2	11.9	-10.8	1.50	1.50	0.00
2,100.0	7.50	145.35	2,098.6	-26.9	18.6	-16.9	1.50	1.50	0.00
2,137.7	8.06	145.35	2,135.9	-31.1	21.5	-19.5	1.50	1.50	0.00
2,200.0	8.06	145.35	2,197.6	-38.3	26.5	-24.1	0.00	0.00	0.00
2,300.0	8.06	145.35	2,296.6	-49.8	34.4	-31.3	0.00	0.00	0.00
2,400.0	8.06	145.35	2,395.6	-61.4	42.4	-38.6	0.00	0.00	0.00
2,500.0	8.06	145.35	2,494.6	-72.9	50.4	-45.9	0.00	0.00	0.00
2,600.0	8.06	145.35	2,593.7	-84.4	58.4	-53.1	0.00	0.00	0.00
2,700.0	8.06	145.35	2,692.7	-96.0	66.3	-60.4	0.00	0.00	0.00
2,800.0	8.06	145.35	2,791.7	-107.5	74.3	-67.6	0.00	0.00	0.00
2,900.0	8.06	145.35	2,890.7	-119.1	82.3	-74.9	0.00	0.00	0.00
3,000.0	8.06	145.35	2,989.7	-130.6	90.3	-82.2	0.00	0.00	0.00
3,100.0	8.06	145.35	3,088.7	-142.1	98.3	-89.4	0.00	0.00	0.00
3,200.0	8.06	145.35	3,187.7	-153.7	106.2	-96.7	0.00	0.00	0.00
3,300.0	8.06	145.35	3,286.7	-165.2	114.2	-103.9	0.00	0.00	0.00
3,400.0	8.06	145.35	3,385.7	-176.8	122.2	-111.2	0.00	0.00	0.00
3,500.0	8.06	145.35	3,484.8	-188.3	130.2	-118.5	0.00	0.00	0.00
3,600.0	8.06	145.35	3,583.8	-199.8	138.1	-125.7	0.00	0.00	0.00
3,700.0	8.06	145.35	3,682.8	-211.4	146.1	-133.0	0.00	0.00	0.00
3,800.0	8.06	145.35	3,781.8	-222.9	154.1	-140.2	0.00	0.00	0.00
3,900.0	8.06	145.35	3,880.8	-234.5	162.1	-147.5	0.00	0.00	0.00
4,000.0	8.06	145.35	3,979.8	-246.0	170.0	-154.8	0.00	0.00	0.00
4,100.0	8.06	145.35	4,078.8	-257.5	178.0	-162.0	0.00	0.00	0.00
4,200.0	8.06	145.35	4,177.8	-269.1	186.0	-169.3	0.00	0.00	0.00
4,300.0	8.06	145.35	4,276.8	-280.6	194.0	-176.5	0.00	0.00	0.00
4,400.0	8.06	145.35	4,375.9	-292.2	202.0	-183.8	0.00	0.00	0.00
4,500.0	8.06	145.35	4,474.9	-303.7	209.9	-191.1	0.00	0.00	0.00
4,600.0	8.06	145.35	4,573.9	-315.2	217.9	-198.3	0.00	0.00	0.00
4,700.0	8.06	145.35	4,672.9	-326.8	225.9	-205.6	0.00	0.00	0.00
4,800.0	8.06	145.35	4,771.9	-338.3	233.9	-212.8	0.00	0.00	0.00
4,900.0	8.06	145.35	4,870.9	-349.9	241.8	-220.1	0.00	0.00	0.00
5,000.0	8.06	145.35	4,969.9	-361.4	249.8	-227.4	0.00	0.00	0.00
5,028.4	8.06	145.35	4,998.0	-364.7	252.1	-229.4	0.00	0.00	0.00

Database:	Landmark	Local Co-ordinate Reference:	Well Arellano P-10-9HN
Company:	Bayswater Exploration & Production, LLC	TVD Reference:	WELL @ 4640.0ft (RKB - 24')
Project:	SEC.10-T5N-R65W	MD Reference:	WELL @ 4640.0ft (RKB - 24')
Site:	Arellano 10-L Pad Sec.10-T5N-R65W	North Reference:	True
Well:	Arellano P-10-9HN	Survey Calculation Method:	Minimum Curvature
Wellbore:	Wellbore #1		
Design:	Plan #1 (11-11-14)		

Planned Survey									
Measured Depth (ft)	Inclination (°)	Azimuth (°)	Vertical Depth (ft)	+N/-S (ft)	+E/-W (ft)	Vertical Section (ft)	Dogleg Rate (°/100ft)	Build Rate (°/100ft)	Turn Rate (°/100ft)
Start Drop -2.00									
5,100.0	6.63	145.35	5,069.0	-372.2	257.3	-234.2	2.00	-2.00	0.00
5,200.0	4.63	145.35	5,168.6	-380.3	262.9	-239.2	2.00	-2.00	0.00
5,300.0	2.63	145.35	5,268.4	-385.5	266.5	-242.5	2.00	-2.00	0.00
5,400.0	0.63	145.35	5,368.3	-387.9	268.1	-244.0	2.00	-2.00	0.00
5,431.7	0.00	0.00	5,400.0	-388.0	268.2	-244.1	2.00	-2.00	0.00
5,500.0	0.00	0.00	5,468.3	-388.0	268.2	-244.1	0.00	0.00	0.00
5,600.0	0.00	0.00	5,568.3	-388.0	268.2	-244.1	0.00	0.00	0.00
5,700.0	0.00	0.00	5,668.3	-388.0	268.2	-244.1	0.00	0.00	0.00
5,800.0	0.00	0.00	5,768.3	-388.0	268.2	-244.1	0.00	0.00	0.00
5,900.0	0.00	0.00	5,868.3	-388.0	268.2	-244.1	0.00	0.00	0.00
6,000.0	0.00	0.00	5,968.3	-388.0	268.2	-244.1	0.00	0.00	0.00
6,100.0	0.00	0.00	6,068.3	-388.0	268.2	-244.1	0.00	0.00	0.00
6,123.3	0.00	0.00	6,091.6	-388.0	268.2	-244.1	0.00	0.00	0.00
KOP #2 - Start Build 8.00									
6,200.0	6.14	269.64	6,168.2	-388.0	264.1	-240.0	8.00	8.00	0.00
6,300.0	14.14	269.64	6,266.5	-388.1	246.5	-222.4	8.00	8.00	0.00
6,400.0	22.14	269.64	6,361.5	-388.3	215.4	-191.4	8.00	8.00	0.00
6,500.0	30.14	269.64	6,451.2	-388.6	171.4	-147.4	8.00	8.00	0.00
6,600.0	38.14	269.64	6,533.9	-389.0	115.3	-91.4	8.00	8.00	0.00
6,700.0	46.14	269.64	6,608.0	-389.4	48.3	-24.5	8.00	8.00	0.00
6,800.0	54.14	269.64	6,672.0	-389.8	-28.4	52.1	8.00	8.00	0.00
6,900.0	62.14	269.64	6,724.8	-390.4	-113.3	136.8	8.00	8.00	0.00
7,000.0	70.14	269.64	6,765.2	-390.9	-204.7	228.1	8.00	8.00	0.00
7,100.0	78.14	269.64	6,792.5	-391.5	-300.8	324.0	8.00	8.00	0.00
7,200.0	86.14	269.64	6,806.2	-392.2	-399.7	422.9	8.00	8.00	0.00
7,250.4	90.17	269.64	6,807.8	-392.5	-450.1	473.2	8.00	8.00	0.00
7"									
7,300.0	90.17	269.64	6,807.6	-392.8	-499.7	522.7	0.00	0.00	0.00
7,400.0	90.17	269.64	6,807.3	-393.4	-599.7	622.5	0.00	0.00	0.00
7,500.0	90.17	269.64	6,807.0	-394.0	-699.7	722.4	0.00	0.00	0.00
7,600.0	90.17	269.64	6,806.7	-394.6	-799.7	822.2	0.00	0.00	0.00
7,700.0	90.17	269.64	6,806.4	-395.3	-899.7	922.1	0.00	0.00	0.00
7,800.0	90.17	269.64	6,806.1	-395.9	-999.7	1,021.9	0.00	0.00	0.00
7,900.0	90.17	269.64	6,805.8	-396.5	-1,099.7	1,121.8	0.00	0.00	0.00
8,000.0	90.17	269.64	6,805.6	-397.1	-1,199.7	1,221.6	0.00	0.00	0.00
8,100.0	90.17	269.64	6,805.3	-397.8	-1,299.7	1,321.5	0.00	0.00	0.00
8,200.0	90.17	269.64	6,805.0	-398.4	-1,399.7	1,421.3	0.00	0.00	0.00
8,300.0	90.17	269.64	6,804.7	-399.0	-1,499.7	1,521.2	0.00	0.00	0.00
8,400.0	90.17	269.64	6,804.4	-399.6	-1,599.7	1,621.0	0.00	0.00	0.00
8,500.0	90.17	269.64	6,804.1	-400.2	-1,699.7	1,720.9	0.00	0.00	0.00
8,600.0	90.17	269.64	6,803.8	-400.9	-1,799.7	1,820.7	0.00	0.00	0.00
8,700.0	90.17	269.64	6,803.5	-401.5	-1,899.7	1,920.6	0.00	0.00	0.00
8,800.0	90.17	269.64	6,803.2	-402.1	-1,999.7	2,020.4	0.00	0.00	0.00
8,900.0	90.17	269.64	6,802.9	-402.7	-2,099.7	2,120.3	0.00	0.00	0.00
9,000.0	90.17	269.64	6,802.6	-403.4	-2,199.7	2,220.1	0.00	0.00	0.00
9,100.0	90.17	269.64	6,802.3	-404.0	-2,299.7	2,320.0	0.00	0.00	0.00
9,200.0	90.17	269.64	6,802.0	-404.6	-2,399.7	2,419.8	0.00	0.00	0.00
9,300.0	90.17	269.64	6,801.7	-405.2	-2,499.7	2,519.7	0.00	0.00	0.00
9,400.0	90.17	269.64	6,801.4	-405.8	-2,599.7	2,619.5	0.00	0.00	0.00
9,500.0	90.17	269.64	6,801.1	-406.5	-2,699.7	2,719.4	0.00	0.00	0.00
9,600.0	90.17	269.64	6,800.8	-407.1	-2,799.7	2,819.2	0.00	0.00	0.00
9,700.0	90.17	269.64	6,800.5	-407.7	-2,899.6	2,919.1	0.00	0.00	0.00

Database:	Landmark	Local Co-ordinate Reference:	Well Arellano P-10-9HN
Company:	Bayswater Exploration & Production, LLC	TVD Reference:	WELL @ 4640.0ft (RKB - 24')
Project:	SEC.10-T5N-R65W	MD Reference:	WELL @ 4640.0ft (RKB - 24')
Site:	Arellano 10-L Pad Sec.10-T5N-R65W	North Reference:	True
Well:	Arellano P-10-9HN	Survey Calculation Method:	Minimum Curvature
Wellbore:	Wellbore #1		
Design:	Plan #1 (11-11-14)		

Planned Survey										
Measured Depth (ft)	Inclination (°)	Azimuth (°)	Vertical Depth (ft)	+N/-S (ft)	+E/-W (ft)	Vertical Section (ft)	Dogleg Rate (°/100ft)	Build Rate (°/100ft)	Turn Rate (°/100ft)	
9,800.0	90.17	269.64	6,800.2	-408.3	-2,999.6	3,018.9	0.00	0.00	0.00	
9,900.0	90.17	269.64	6,799.9	-409.0	-3,099.6	3,118.8	0.00	0.00	0.00	
10,000.0	90.17	269.64	6,799.6	-409.6	-3,199.6	3,218.6	0.00	0.00	0.00	
10,100.0	90.17	269.64	6,799.3	-410.2	-3,299.6	3,318.5	0.00	0.00	0.00	
10,200.0	90.17	269.64	6,799.0	-410.8	-3,399.6	3,418.3	0.00	0.00	0.00	
10,300.0	90.17	269.64	6,798.7	-411.4	-3,499.6	3,518.2	0.00	0.00	0.00	
10,400.0	90.17	269.64	6,798.4	-412.1	-3,599.6	3,618.0	0.00	0.00	0.00	
10,500.0	90.17	269.64	6,798.1	-412.7	-3,699.6	3,717.9	0.00	0.00	0.00	
10,600.0	90.17	269.64	6,797.8	-413.3	-3,799.6	3,817.7	0.00	0.00	0.00	
10,700.0	90.17	269.64	6,797.5	-413.9	-3,899.6	3,917.6	0.00	0.00	0.00	
10,800.0	90.17	269.64	6,797.2	-414.6	-3,999.6	4,017.4	0.00	0.00	0.00	
10,900.0	90.17	269.64	6,796.9	-415.2	-4,099.6	4,117.3	0.00	0.00	0.00	
11,000.0	90.17	269.64	6,796.7	-415.8	-4,199.6	4,217.1	0.00	0.00	0.00	
11,100.0	90.17	269.64	6,796.4	-416.4	-4,299.6	4,317.0	0.00	0.00	0.00	
11,200.0	90.17	269.64	6,796.1	-417.0	-4,399.6	4,416.8	0.00	0.00	0.00	
11,300.0	90.17	269.64	6,795.8	-417.7	-4,499.6	4,516.7	0.00	0.00	0.00	
11,400.0	90.17	269.64	6,795.5	-418.3	-4,599.6	4,616.5	0.00	0.00	0.00	
11,500.0	90.17	269.64	6,795.2	-418.9	-4,699.6	4,716.4	0.00	0.00	0.00	
11,600.0	90.17	269.64	6,794.9	-419.5	-4,799.6	4,816.2	0.00	0.00	0.00	
11,700.0	90.17	269.64	6,794.6	-420.2	-4,899.6	4,916.1	0.00	0.00	0.00	
11,800.0	90.17	269.64	6,794.3	-420.8	-4,999.6	5,015.9	0.00	0.00	0.00	
11,900.0	90.17	269.64	6,794.0	-421.4	-5,099.6	5,115.8	0.00	0.00	0.00	
12,000.0	90.17	269.64	6,793.7	-422.0	-5,199.6	5,215.6	0.00	0.00	0.00	
12,100.0	90.17	269.64	6,793.4	-422.6	-5,299.6	5,315.5	0.00	0.00	0.00	
12,200.0	90.17	269.64	6,793.1	-423.3	-5,399.6	5,415.3	0.00	0.00	0.00	
12,300.0	90.17	269.64	6,792.8	-423.9	-5,499.6	5,515.2	0.00	0.00	0.00	
12,400.0	90.17	269.64	6,792.5	-424.5	-5,599.6	5,615.0	0.00	0.00	0.00	
12,500.0	90.17	269.64	6,792.2	-425.1	-5,699.6	5,714.9	0.00	0.00	0.00	
12,600.0	90.17	269.64	6,791.9	-425.8	-5,799.6	5,814.7	0.00	0.00	0.00	
12,700.0	90.17	269.64	6,791.6	-426.4	-5,899.6	5,914.6	0.00	0.00	0.00	
12,800.0	90.17	269.64	6,791.3	-427.0	-5,999.6	6,014.4	0.00	0.00	0.00	
12,900.0	90.17	269.64	6,791.0	-427.6	-6,099.6	6,114.3	0.00	0.00	0.00	
13,000.0	90.17	269.64	6,790.7	-428.2	-6,199.6	6,214.1	0.00	0.00	0.00	
13,100.0	90.17	269.64	6,790.4	-428.9	-6,299.6	6,314.0	0.00	0.00	0.00	
13,200.0	90.17	269.64	6,790.1	-429.5	-6,399.6	6,413.8	0.00	0.00	0.00	
13,300.0	90.17	269.64	6,789.8	-430.1	-6,499.6	6,513.7	0.00	0.00	0.00	
13,400.0	90.17	269.64	6,789.5	-430.7	-6,599.6	6,613.5	0.00	0.00	0.00	
13,500.0	90.17	269.64	6,789.2	-431.4	-6,699.6	6,713.4	0.00	0.00	0.00	
13,600.0	90.17	269.64	6,788.9	-432.0	-6,799.6	6,813.2	0.00	0.00	0.00	
13,700.0	90.17	269.64	6,788.6	-432.6	-6,899.6	6,913.1	0.00	0.00	0.00	
13,800.0	90.17	269.64	6,788.3	-433.2	-6,999.6	7,012.9	0.00	0.00	0.00	
13,900.0	90.17	269.64	6,788.0	-433.8	-7,099.5	7,112.8	0.00	0.00	0.00	
13,915.7	90.17	269.64	6,788.0	-433.9	-7,115.2	7,128.4	0.00	0.00	0.00	

Database:	Landmark	Local Co-ordinate Reference:	Well Arellano P-10-9HN
Company:	Bayswater Exploration & Production, LLC	TVD Reference:	WELL @ 4640.0ft (RKB - 24')
Project:	SEC.10-T5N-R65W	MD Reference:	WELL @ 4640.0ft (RKB - 24')
Site:	Arellano 10-L Pad Sec.10-T5N-R65W	North Reference:	True
Well:	Arellano P-10-9HN	Survey Calculation Method:	Minimum Curvature
Wellbore:	Wellbore #1		
Design:	Plan #1 (11-11-14)		

Targets										
Target Name	Dip Angle (°)	Dip Dir. (°)	TVD (ft)	+N/-S (ft)	+E/-W (ft)	Northing (ft)	Easting (ft)	Latitude	Longitude	
- hit/miss target										
- Shape										
SHL 1550'FSL & 314'I	0.00	0.00	1.0	0.0	0.0	1,393,671.18	3,239,156.04	40.410850	-104.641152	
- plan hits target center										
- Point										
BHL 1160'FSL & 217'I	0.00	0.00	6,788.0	-433.9	-7,115.2	1,393,168.34	3,232,045.37	40.409656	-104.666703	
- plan hits target center										
- Point										

Casing Points					
Measured Depth (ft)	Vertical Depth (ft)	Name	Casing Diameter (")	Hole Diameter (")	
7,250.4	6,807.8	7"	7	7-1/2	

Plan Annotations					
Measured Depth (ft)	Vertical Depth (ft)	Local Coordinates +N/-S (ft)	+E/-W (ft)	Comment	
1,600.0	1,600.0	0.0	0.0	KOP - Start Build 1.50	
5,028.4	4,998.1	-31.1	21.5	Start Drop -2.00	
6,123.3	6,091.6	-364.7	252.1	KOP #2 - Start Build 8.00	
13,915.7	6,788.0	-388.0	268.2	TD at 13915.7	