

Bayswater Exploration & Production, LLC

Well Name: **Arellano R-10-9HC**

Surface Location: Arellano 10-L Pad Sec.10-T5N-R65W

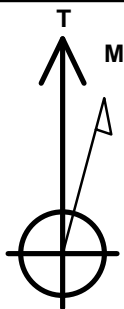
North American Datum 1983 , US State Plane 1983 , Colorado Northern Zone

Ground Elevation: 4616.0

+N/-S	+E/-W	Northing	Easting	Latitude	Longitude	Slot
0.0	0.0	1393643.03	3239146.01	40.410773	-104.641189	
RKB - 24' WELL @ 4640.0ft (RKB - 24')						

WELLBORE TARGET DETAILS

Name	TVD	+N/-S	+E/-W	Shape
SHL 1523'FSL & 325'FEL, Sec.10	1.0	0.0	0.0	Point
BHL 665'FSL & 2170'FEL, Sec.9	6950.0	-901.0	-7102.6	Point



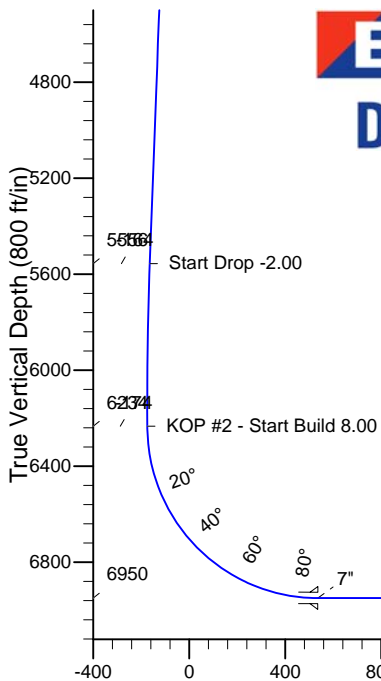
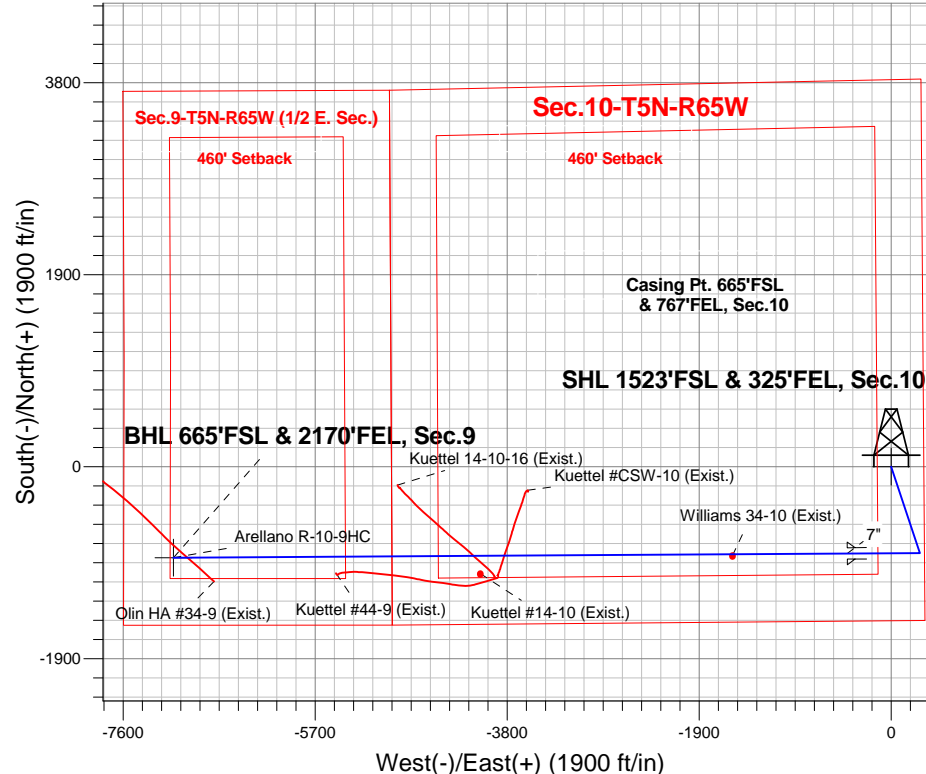
Azimuths to True North
Magnetic North: 8.34°

Magnetic Field
Strength: 52792.3snT
Dip Angle: 66.96°
Date: 11/11/2014
Model: IGRF2010

Arellano 10-L Pad Sec.10-T5N-R65W
Arellano R-10-9HC
Plan #1 (11-11-14)
18:07, November 17 2014

ANNOTATIONS

TVD	MD	Annotation
800.0	800.0	KOP - Start Build 1.50
5556.1	5635.2	Start Drop -2.00
6233.8	6316.2	KOP #2 - Start Build 8.00
6950.0	14111.8	TD at 14111.8



SECTION DETAILS

Sec	MD	Inc	Azi	TVD	+N/-S	+E/-W	DLeg	TFace	VSec	Target
1	0.0	0.00	0.00	0.0	0.0	0.0	0.00	0.00	0.0	
2	800.0	0.00	0.00	800.0	0.0	0.0	0.00	0.00	0.0	
3	1529.6	10.94	161.62	1525.1	-65.9	21.9	1.50	161.62	-13.4	
4	5635.2	10.94	161.62	5556.2	-805.6	267.7	0.00	0.00	-164.2	
5	6182.4	0.00	0.00	6100.0	-855.0	284.1	2.00	180.00	-174.3	
6	6316.2	0.00	0.00	6233.8	-855.0	284.1	0.00	0.00	-174.3	
7	7441.2	90.00	269.64	6950.0	-859.5	-432.1	8.00	269.64	536.8	
8	14111.8	90.00	269.64	6950.0	-901.0	-7102.6	0.00	0.00	7159.5	BHL 665'FSL & 2170'FEL, Sec.9

BHL 665'FSL & 2170'FEL, Sec.9

Vertical Section at 262.77° (800 ft/in)



Bayswater Exploration & Production, LLC

SEC.10-T5N-R65W

Arellano 10-L Pad Sec.10-T5N-R65W

Arellano R-10-9HC

Wellbore #1

Plan: Plan #1 (11-11-14)

Standard Planning Report

17 November, 2014



BAYSWATER
EXPLORATION & PRODUCTION, LLC

Database:	Landmark	Local Co-ordinate Reference:	Well Arellano R-10-9HC
Company:	Bayswater Exploration & Production, LLC	TVD Reference:	WELL @ 4640.0ft (RKB - 24')
Project:	SEC.10-T5N-R65W	MD Reference:	WELL @ 4640.0ft (RKB - 24')
Site:	Arellano 10-L Pad Sec.10-T5N-R65W	North Reference:	True
Well:	Arellano R-10-9HC	Survey Calculation Method:	Minimum Curvature
Wellbore:	Wellbore #1		
Design:	Plan #1 (11-11-14)		

Project	SEC.10-T5N-R65W, Weld County, CO		
Map System:	US State Plane 1983	System Datum:	Mean Sea Level
Geo Datum:	North American Datum 1983		Using Well Reference Point
Map Zone:	Colorado Northern Zone		

Site	Arellano 10-L Pad Sec.10-T5N-R65W				
Site Position:		Northing:	1,393,742.11 ft	Latitude:	40.411044
From:	Lat/Long	Easting:	3,239,181.53ft	Longitude:	-104.641058
Position Uncertainty:	0.0 ft	Slot Radius:	"	Grid Convergence:	0.55 °

Well	Arellano R-10-9HC					
Well Position	+N/-S	-98.7 ft	Northing:	1,393,643.03 ft	Latitude:	40.410773
	+E/-W	-36.5 ft	Easting:	3,239,146.01 ft	Longitude:	-104.641189
Position Uncertainty		0.0 ft	Wellhead Elevation:	ft	Ground Level:	4,616.0 ft

Wellbore	Wellbore #1				
Magnetics	Model Name	Sample Date	Declination (°)	Dip Angle (°)	Field Strength (nT)
	IGRF2010	11/11/2014	8.34	66.96	52,792

Design	Plan #1 (11-11-14)			
Audit Notes:				
Version:	Phase:	PROTOTYPE	Tie On Depth:	0.0
Vertical Section:	Depth From (TVD) (ft)	+N/-S (ft)	+E/-W (ft)	Direction (°)
	0.0	0.0	0.0	262.77

Plan Sections										
Measured Depth (ft)	Inclination (°)	Azimuth (°)	Vertical Depth (ft)	+N/-S (ft)	+E/-W (ft)	Dogleg Rate (°/100ft)	Build Rate (°/100ft)	Turn Rate (°/100ft)	TFO (°)	Target
0.0	0.00	0.00	0.0	0.0	0.0	0.00	0.00	0.00	0.00	
800.0	0.00	0.00	800.0	0.0	0.0	0.00	0.00	0.00	0.00	
1,529.6	10.94	161.62	1,525.1	-65.9	21.9	1.50	1.50	0.00	161.62	
5,635.2	10.94	161.62	5,556.2	-805.6	267.7	0.00	0.00	0.00	0.00	
6,182.4	0.00	0.00	6,100.0	-855.0	284.1	2.00	-2.00	0.00	180.00	
6,316.2	0.00	0.00	6,233.8	-855.0	284.1	0.00	0.00	0.00	0.00	
7,441.2	90.00	269.64	6,950.0	-859.5	-432.1	8.00	8.00	0.00	269.64	
14,111.8	90.00	269.64	6,950.0	-901.0	-7,102.6	0.00	0.00	0.00	0.00	BHL 665'FSL & 217

Database:	Landmark	Local Co-ordinate Reference:	Well Arellano R-10-9HC
Company:	Bayswater Exploration & Production, LLC	TVD Reference:	WELL @ 4640.0ft (RKB - 24')
Project:	SEC.10-T5N-R65W	MD Reference:	WELL @ 4640.0ft (RKB - 24')
Site:	Arellano 10-L Pad Sec.10-T5N-R65W	North Reference:	True
Well:	Arellano R-10-9HC	Survey Calculation Method:	Minimum Curvature
Wellbore:	Wellbore #1		
Design:	Plan #1 (11-11-14)		

Planned Survey									
Measured Depth (ft)	Inclination (°)	Azimuth (°)	Vertical Depth (ft)	+N/-S (ft)	+E/-W (ft)	Vertical Section (ft)	Dogleg Rate (°/100ft)	Build Rate (°/100ft)	Turn Rate (°/100ft)
0.0	0.00	0.00	0.0	0.0	0.0	0.0	0.00	0.00	0.00
100.0	0.00	0.00	100.0	0.0	0.0	0.0	0.00	0.00	0.00
200.0	0.00	0.00	200.0	0.0	0.0	0.0	0.00	0.00	0.00
300.0	0.00	0.00	300.0	0.0	0.0	0.0	0.00	0.00	0.00
400.0	0.00	0.00	400.0	0.0	0.0	0.0	0.00	0.00	0.00
500.0	0.00	0.00	500.0	0.0	0.0	0.0	0.00	0.00	0.00
600.0	0.00	0.00	600.0	0.0	0.0	0.0	0.00	0.00	0.00
700.0	0.00	0.00	700.0	0.0	0.0	0.0	0.00	0.00	0.00
800.0	0.00	0.00	800.0	0.0	0.0	0.0	0.00	0.00	0.00
KOP - Start Build 1.50									
900.0	1.50	161.62	900.0	-1.2	0.4	-0.3	1.50	1.50	0.00
1,000.0	3.00	161.62	999.9	-5.0	1.7	-1.0	1.50	1.50	0.00
1,100.0	4.50	161.62	1,099.7	-11.2	3.7	-2.3	1.50	1.50	0.00
1,200.0	6.00	161.62	1,199.3	-19.9	6.6	-4.0	1.50	1.50	0.00
1,300.0	7.50	161.62	1,298.6	-31.0	10.3	-6.3	1.50	1.50	0.00
1,400.0	9.00	161.62	1,397.5	-44.6	14.8	-9.1	1.50	1.50	0.00
1,500.0	10.50	161.62	1,496.1	-60.7	20.2	-12.4	1.50	1.50	0.00
1,529.6	10.94	161.62	1,525.1	-65.9	21.9	-13.4	1.50	1.50	0.00
1,600.0	10.94	161.62	1,594.3	-78.6	26.1	-16.0	0.00	0.00	0.00
1,700.0	10.94	161.62	1,692.5	-96.6	32.1	-19.7	0.00	0.00	0.00
1,800.0	10.94	161.62	1,790.7	-114.6	38.1	-23.4	0.00	0.00	0.00
1,900.0	10.94	161.62	1,888.8	-132.7	44.1	-27.0	0.00	0.00	0.00
2,000.0	10.94	161.62	1,987.0	-150.7	50.1	-30.7	0.00	0.00	0.00
2,100.0	10.94	161.62	2,085.2	-168.7	56.1	-34.4	0.00	0.00	0.00
2,200.0	10.94	161.62	2,183.4	-186.7	62.0	-38.1	0.00	0.00	0.00
2,300.0	10.94	161.62	2,281.6	-204.7	68.0	-41.7	0.00	0.00	0.00
2,400.0	10.94	161.62	2,379.7	-222.7	74.0	-45.4	0.00	0.00	0.00
2,500.0	10.94	161.62	2,477.9	-240.7	80.0	-49.1	0.00	0.00	0.00
2,600.0	10.94	161.62	2,576.1	-258.8	86.0	-52.7	0.00	0.00	0.00
2,700.0	10.94	161.62	2,674.3	-276.8	92.0	-56.4	0.00	0.00	0.00
2,800.0	10.94	161.62	2,772.5	-294.8	98.0	-60.1	0.00	0.00	0.00
2,900.0	10.94	161.62	2,870.7	-312.8	103.9	-63.8	0.00	0.00	0.00
3,000.0	10.94	161.62	2,968.8	-330.8	109.9	-67.4	0.00	0.00	0.00
3,100.0	10.94	161.62	3,067.0	-348.8	115.9	-71.1	0.00	0.00	0.00
3,200.0	10.94	161.62	3,165.2	-366.8	121.9	-74.8	0.00	0.00	0.00
3,300.0	10.94	161.62	3,263.4	-384.9	127.9	-78.4	0.00	0.00	0.00
3,400.0	10.94	161.62	3,361.6	-402.9	133.9	-82.1	0.00	0.00	0.00
3,500.0	10.94	161.62	3,459.7	-420.9	139.9	-85.8	0.00	0.00	0.00
3,600.0	10.94	161.62	3,557.9	-438.9	145.8	-89.5	0.00	0.00	0.00
3,700.0	10.94	161.62	3,656.1	-456.9	151.8	-93.1	0.00	0.00	0.00
3,800.0	10.94	161.62	3,754.3	-474.9	157.8	-96.8	0.00	0.00	0.00
3,900.0	10.94	161.62	3,852.5	-493.0	163.8	-100.5	0.00	0.00	0.00
4,000.0	10.94	161.62	3,950.6	-511.0	169.8	-104.1	0.00	0.00	0.00
4,100.0	10.94	161.62	4,048.8	-529.0	175.8	-107.8	0.00	0.00	0.00
4,200.0	10.94	161.62	4,147.0	-547.0	181.8	-111.5	0.00	0.00	0.00
4,300.0	10.94	161.62	4,245.2	-565.0	187.7	-115.2	0.00	0.00	0.00
4,400.0	10.94	161.62	4,343.4	-583.0	193.7	-118.8	0.00	0.00	0.00
4,500.0	10.94	161.62	4,441.6	-601.0	199.7	-122.5	0.00	0.00	0.00
4,600.0	10.94	161.62	4,539.7	-619.1	205.7	-126.2	0.00	0.00	0.00
4,700.0	10.94	161.62	4,637.9	-637.1	211.7	-129.8	0.00	0.00	0.00
4,800.0	10.94	161.62	4,736.1	-655.1	217.7	-133.5	0.00	0.00	0.00
4,900.0	10.94	161.62	4,834.3	-673.1	223.7	-137.2	0.00	0.00	0.00
5,000.0	10.94	161.62	4,932.5	-691.1	229.6	-140.9	0.00	0.00	0.00
5,100.0	10.94	161.62	5,030.6	-709.1	235.6	-144.5	0.00	0.00	0.00

Database:	Landmark	Local Co-ordinate Reference:	Well Arellano R-10-9HC
Company:	Bayswater Exploration & Production, LLC	TVD Reference:	WELL @ 4640.0ft (RKB - 24')
Project:	SEC.10-T5N-R65W	MD Reference:	WELL @ 4640.0ft (RKB - 24')
Site:	Arellano 10-L Pad Sec.10-T5N-R65W	North Reference:	True
Well:	Arellano R-10-9HC	Survey Calculation Method:	Minimum Curvature
Wellbore:	Wellbore #1		
Design:	Plan #1 (11-11-14)		

Planned Survey									
Measured Depth (ft)	Inclination (°)	Azimuth (°)	Vertical Depth (ft)	+N/-S (ft)	+E/-W (ft)	Vertical Section (ft)	Dogleg Rate (°/100ft)	Build Rate (°/100ft)	Turn Rate (°/100ft)
5,200.0	10.94	161.62	5,128.8	-727.2	241.6	-148.2	0.00	0.00	0.00
5,300.0	10.94	161.62	5,227.0	-745.2	247.6	-151.9	0.00	0.00	0.00
5,400.0	10.94	161.62	5,325.2	-763.2	253.6	-155.5	0.00	0.00	0.00
5,500.0	10.94	161.62	5,423.4	-781.2	259.6	-159.2	0.00	0.00	0.00
5,600.0	10.94	161.62	5,521.6	-799.2	265.6	-162.9	0.00	0.00	0.00
5,635.2	10.94	161.62	5,556.1	-805.6	267.7	-164.2	0.00	0.00	0.00
Start Drop -2.00									
5,700.0	9.65	161.62	5,619.9	-816.5	271.3	-166.4	2.00	-2.00	0.00
5,800.0	7.65	161.62	5,718.7	-830.8	276.1	-169.3	2.00	-2.00	0.00
5,900.0	5.65	161.62	5,818.0	-841.8	279.7	-171.6	2.00	-2.00	0.00
6,000.0	3.65	161.62	5,917.7	-849.5	282.3	-173.1	2.00	-2.00	0.00
6,100.0	1.65	161.62	6,017.6	-853.9	283.7	-174.0	2.00	-2.00	0.00
6,182.4	0.00	0.00	6,100.0	-855.0	284.1	-174.3	2.00	-2.00	0.00
6,200.0	0.00	0.00	6,117.6	-855.0	284.1	-174.3	0.00	0.00	0.00
6,300.0	0.00	0.00	6,217.6	-855.0	284.1	-174.3	0.00	0.00	0.00
6,316.2	0.00	0.00	6,233.8	-855.0	284.1	-174.3	0.00	0.00	0.00
KOP #2 - Start Build 8.00									
6,400.0	6.70	269.64	6,317.4	-855.0	279.2	-169.4	8.00	8.00	0.00
6,500.0	14.70	269.64	6,415.6	-855.1	260.6	-151.0	8.00	8.00	0.00
6,600.0	22.70	269.64	6,510.2	-855.3	228.6	-119.2	8.00	8.00	0.00
6,700.0	30.70	269.64	6,599.5	-855.6	183.7	-74.6	8.00	8.00	0.00
6,800.0	38.70	269.64	6,681.6	-856.0	126.8	-18.1	8.00	8.00	0.00
6,900.0	46.70	269.64	6,755.1	-856.4	59.1	49.2	8.00	8.00	0.00
7,000.0	54.70	269.64	6,818.3	-856.9	-18.3	125.9	8.00	8.00	0.00
7,100.0	62.70	269.64	6,870.2	-857.4	-103.6	210.7	8.00	8.00	0.00
7,200.0	70.70	269.64	6,909.8	-858.0	-195.4	301.8	8.00	8.00	0.00
7,300.0	78.70	269.64	6,936.1	-858.6	-291.8	397.5	8.00	8.00	0.00
7,400.0	86.70	269.64	6,948.8	-859.2	-390.9	495.9	8.00	8.00	0.00
7,441.2	90.00	269.64	6,950.0	-859.5	-432.1	536.8	8.00	8.00	0.00
7"									
7,500.0	90.00	269.64	6,950.0	-859.8	-490.9	595.2	0.00	0.00	0.00
7,600.0	90.00	269.64	6,950.0	-860.4	-590.9	694.4	0.00	0.00	0.00
7,700.0	90.00	269.64	6,950.0	-861.1	-690.9	793.7	0.00	0.00	0.00
7,800.0	90.00	269.64	6,950.0	-861.7	-790.9	893.0	0.00	0.00	0.00
7,900.0	90.00	269.64	6,950.0	-862.3	-890.9	992.3	0.00	0.00	0.00
8,000.0	90.00	269.64	6,950.0	-862.9	-990.9	1,091.6	0.00	0.00	0.00
8,100.0	90.00	269.64	6,950.0	-863.6	-1,090.9	1,190.9	0.00	0.00	0.00
8,200.0	90.00	269.64	6,950.0	-864.2	-1,190.9	1,290.1	0.00	0.00	0.00
8,300.0	90.00	269.64	6,950.0	-864.8	-1,290.9	1,389.4	0.00	0.00	0.00
8,400.0	90.00	269.64	6,950.0	-865.4	-1,390.9	1,488.7	0.00	0.00	0.00
8,500.0	90.00	269.64	6,950.0	-866.0	-1,490.9	1,588.0	0.00	0.00	0.00
8,600.0	90.00	269.64	6,950.0	-866.7	-1,590.9	1,687.3	0.00	0.00	0.00
8,700.0	90.00	269.64	6,950.0	-867.3	-1,690.8	1,786.5	0.00	0.00	0.00
8,800.0	90.00	269.64	6,950.0	-867.9	-1,790.8	1,885.8	0.00	0.00	0.00
8,900.0	90.00	269.64	6,950.0	-868.5	-1,890.8	1,985.1	0.00	0.00	0.00
9,000.0	90.00	269.64	6,950.0	-869.2	-1,990.8	2,084.4	0.00	0.00	0.00
9,100.0	90.00	269.64	6,950.0	-869.8	-2,090.8	2,183.7	0.00	0.00	0.00
9,200.0	90.00	269.64	6,950.0	-870.4	-2,190.8	2,283.0	0.00	0.00	0.00
9,300.0	90.00	269.64	6,950.0	-871.0	-2,290.8	2,382.2	0.00	0.00	0.00
9,400.0	90.00	269.64	6,950.0	-871.6	-2,390.8	2,481.5	0.00	0.00	0.00
9,500.0	90.00	269.64	6,950.0	-872.3	-2,490.8	2,580.8	0.00	0.00	0.00
9,600.0	90.00	269.64	6,950.0	-872.9	-2,590.8	2,680.1	0.00	0.00	0.00
9,700.0	90.00	269.64	6,950.0	-873.5	-2,690.8	2,779.4	0.00	0.00	0.00

Database:	Landmark	Local Co-ordinate Reference:	Well Arellano R-10-9HC
Company:	Bayswater Exploration & Production, LLC	TVD Reference:	WELL @ 4640.0ft (RKB - 24')
Project:	SEC.10-T5N-R65W	MD Reference:	WELL @ 4640.0ft (RKB - 24')
Site:	Arellano 10-L Pad Sec.10-T5N-R65W	North Reference:	True
Well:	Arellano R-10-9HC	Survey Calculation Method:	Minimum Curvature
Wellbore:	Wellbore #1		
Design:	Plan #1 (11-11-14)		

Planned Survey										
Measured Depth (ft)	Inclination (°)	Azimuth (°)	Vertical Depth (ft)	+N/-S (ft)	+E/-W (ft)	Vertical Section (ft)	Dogleg Rate (°/100ft)	Build Rate (°/100ft)	Turn Rate (°/100ft)	
9,800.0	90.00	269.64	6,950.0	-874.1	-2,790.8	2,878.6	0.00	0.00	0.00	
9,900.0	90.00	269.64	6,950.0	-874.8	-2,890.8	2,977.9	0.00	0.00	0.00	
10,000.0	90.00	269.64	6,950.0	-875.4	-2,990.8	3,077.2	0.00	0.00	0.00	
10,100.0	90.00	269.64	6,950.0	-876.0	-3,090.8	3,176.5	0.00	0.00	0.00	
10,200.0	90.00	269.64	6,950.0	-876.6	-3,190.8	3,275.8	0.00	0.00	0.00	
10,300.0	90.00	269.64	6,950.0	-877.2	-3,290.8	3,375.0	0.00	0.00	0.00	
10,400.0	90.00	269.64	6,950.0	-877.9	-3,390.8	3,474.3	0.00	0.00	0.00	
10,500.0	90.00	269.64	6,950.0	-878.5	-3,490.8	3,573.6	0.00	0.00	0.00	
10,600.0	90.00	269.64	6,950.0	-879.1	-3,590.8	3,672.9	0.00	0.00	0.00	
10,700.0	90.00	269.64	6,950.0	-879.7	-3,690.8	3,772.2	0.00	0.00	0.00	
10,800.0	90.00	269.64	6,950.0	-880.4	-3,790.8	3,871.5	0.00	0.00	0.00	
10,900.0	90.00	269.64	6,950.0	-881.0	-3,890.8	3,970.7	0.00	0.00	0.00	
11,000.0	90.00	269.64	6,950.0	-881.6	-3,990.8	4,070.0	0.00	0.00	0.00	
11,100.0	90.00	269.64	6,950.0	-882.2	-4,090.8	4,169.3	0.00	0.00	0.00	
11,200.0	90.00	269.64	6,950.0	-882.9	-4,190.8	4,268.6	0.00	0.00	0.00	
11,300.0	90.00	269.64	6,950.0	-883.5	-4,290.8	4,367.9	0.00	0.00	0.00	
11,400.0	90.00	269.64	6,950.0	-884.1	-4,390.8	4,467.1	0.00	0.00	0.00	
11,500.0	90.00	269.64	6,950.0	-884.7	-4,490.8	4,566.4	0.00	0.00	0.00	
11,600.0	90.00	269.64	6,950.0	-885.3	-4,590.8	4,665.7	0.00	0.00	0.00	
11,700.0	90.00	269.64	6,950.0	-886.0	-4,690.8	4,765.0	0.00	0.00	0.00	
11,800.0	90.00	269.64	6,950.0	-886.6	-4,790.8	4,864.3	0.00	0.00	0.00	
11,900.0	90.00	269.64	6,950.0	-887.2	-4,890.8	4,963.6	0.00	0.00	0.00	
12,000.0	90.00	269.64	6,950.0	-887.8	-4,990.8	5,062.8	0.00	0.00	0.00	
12,100.0	90.00	269.64	6,950.0	-888.5	-5,090.8	5,162.1	0.00	0.00	0.00	
12,200.0	90.00	269.64	6,950.0	-889.1	-5,190.8	5,261.4	0.00	0.00	0.00	
12,300.0	90.00	269.64	6,950.0	-889.7	-5,290.8	5,360.7	0.00	0.00	0.00	
12,400.0	90.00	269.64	6,950.0	-890.3	-5,390.8	5,460.0	0.00	0.00	0.00	
12,500.0	90.00	269.64	6,950.0	-890.9	-5,490.8	5,559.2	0.00	0.00	0.00	
12,600.0	90.00	269.64	6,950.0	-891.6	-5,590.8	5,658.5	0.00	0.00	0.00	
12,700.0	90.00	269.64	6,950.0	-892.2	-5,690.8	5,757.8	0.00	0.00	0.00	
12,800.0	90.00	269.64	6,950.0	-892.8	-5,790.8	5,857.1	0.00	0.00	0.00	
12,900.0	90.00	269.64	6,950.0	-893.4	-5,890.8	5,956.4	0.00	0.00	0.00	
13,000.0	90.00	269.64	6,950.0	-894.1	-5,990.8	6,055.6	0.00	0.00	0.00	
13,100.0	90.00	269.64	6,950.0	-894.7	-6,090.8	6,154.9	0.00	0.00	0.00	
13,200.0	90.00	269.64	6,950.0	-895.3	-6,190.8	6,254.2	0.00	0.00	0.00	
13,300.0	90.00	269.64	6,950.0	-895.9	-6,290.8	6,353.5	0.00	0.00	0.00	
13,400.0	90.00	269.64	6,950.0	-896.5	-6,390.8	6,452.8	0.00	0.00	0.00	
13,500.0	90.00	269.64	6,950.0	-897.2	-6,490.8	6,552.1	0.00	0.00	0.00	
13,600.0	90.00	269.64	6,950.0	-897.8	-6,590.8	6,651.3	0.00	0.00	0.00	
13,700.0	90.00	269.64	6,950.0	-898.4	-6,690.8	6,750.6	0.00	0.00	0.00	
13,800.0	90.00	269.64	6,950.0	-899.0	-6,790.8	6,849.9	0.00	0.00	0.00	
13,900.0	90.00	269.64	6,950.0	-899.7	-6,890.7	6,949.2	0.00	0.00	0.00	
14,000.0	90.00	269.64	6,950.0	-900.3	-6,990.7	7,048.5	0.00	0.00	0.00	
14,100.0	90.00	269.64	6,950.0	-900.9	-7,090.7	7,147.7	0.00	0.00	0.00	
14,111.8	90.00	269.64	6,950.0	-901.0	-7,102.5	7,159.5	0.00	0.00	0.00	
TD at 14111.8										

Database:	Landmark	Local Co-ordinate Reference:	Well Arellano R-10-9HC
Company:	Bayswater Exploration & Production, LLC	TVD Reference:	WELL @ 4640.0ft (RKB - 24')
Project:	SEC.10-T5N-R65W	MD Reference:	WELL @ 4640.0ft (RKB - 24')
Site:	Arellano 10-L Pad Sec.10-T5N-R65W	North Reference:	True
Well:	Arellano R-10-9HC	Survey Calculation Method:	Minimum Curvature
Wellbore:	Wellbore #1		
Design:	Plan #1 (11-11-14)		

Targets									
Target Name									
- hit/miss target	Dip Angle	Dip Dir.	TVD	+N/-S	+E/-W	Northing	Easting	Latitude	Longitude
- Shape	(°)	(°)	(ft)	(ft)	(ft)	(ft)	(ft)		
BHL 665'FSL & 2170'I - plan hits target center - Point	0.00	0.00	6,950.0	-901.0	-7,102.6	1,392,673.31	3,232,052.53	40.408297	-104.666694
SHL 1523'FSL & 325'I - plan hits target center - Point	0.00	0.00	1.0	0.0	0.0	1,393,643.03	3,239,146.01	40.410773	-104.641189

Casing Points				
Measured Depth	Vertical Depth		Casing Diameter	Hole Diameter
(ft)	(ft)	Name	(")	(")
7,441.2	6,950.0	7"	7	7-1/2

Plan Annotations				
Measured Depth	Vertical Depth	Local Coordinates		Comment
(ft)	(ft)	+N/-S (ft)	+E/-W (ft)	
800.0	800.0	0.0	0.0	KOP - Start Build 1.50
5,635.2	5,556.1	-805.6	267.7	Start Drop -2.00
6,316.2	6,233.8	-855.0	284.1	KOP #2 - Start Build 8.00
14,111.8	6,950.0	-901.0	-7,102.5	TD at 14111.8