

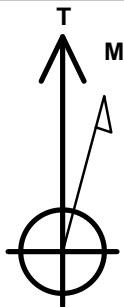
# Bayswater Exploration & Production, LLC

Well Name: **Arellano S-10-9HN**

Surface Location: Arellano 10-L Pad Sec.10-T5N-R65W  
 North American Datum 1983 , US State Plane 1983 , Colorado Northern Zone  
 Ground Elevation: 4616.0  
 +N/-S +E/-W Northing Easting Latitude Longitude Slot  
 0.0 0.0 1393629.13 3239140.85 40.410735 -104.641208  
 RKB - 24' WELL @ 4640.0ft (RKB - 24')

## WELLBORE TARGET DETAILS

Name	TVD	+N/-S	+E/-W	Shape
SHL 1509'FSL & 330'FEL, Sec.10	1.0	0.0	0.0	Point
BHL 500'FSL & 2170'FEL, Sec.9	6845.0	-1052.2	-7096.5	Point



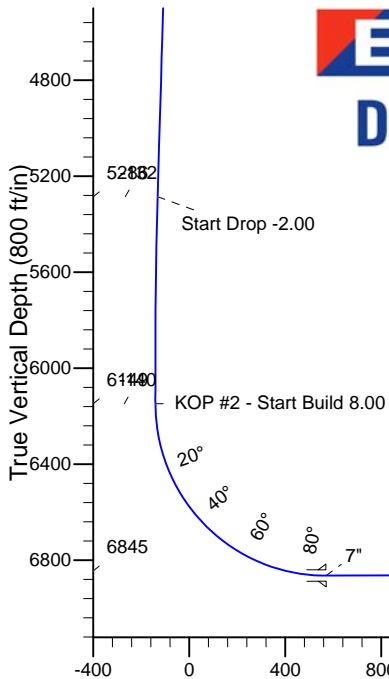
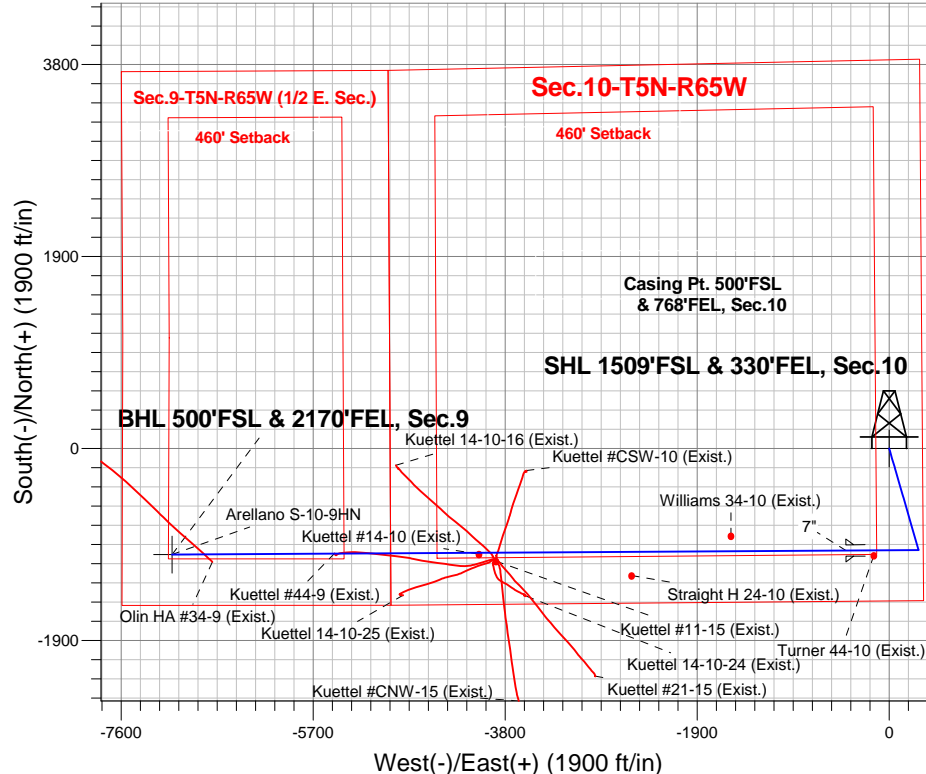
Azimuths to True North  
 Magnetic North: 8.34°

Magnetic Field  
 Strength: 52792.3snT  
 Dip Angle: 66.96°  
 Date: 11/11/2014  
 Model: IGRF2010

Arellano 10-L Pad Sec.10-T5N-R65W  
 Arellano S-10-9HN  
 Plan #1 (11-11-14)  
 18:04, November 17 2014

## ANNOTATIONS

TVD	MD	Annotation
400.0	400.0	KOP - Start Build 1.50
5286.3	5389.4	Start Drop -2.00
6148.5	6256.4	KOP #2 - Start Build 8.00
6845.0	14053.0	TD at 14053.0



## SECTION DETAILS

Sec	MD	Inc	Azi	TVD	+N/-S	+E/-W	DLeg	TFace	VSec	Target
1	0.0	0.00	0.00	0.0	0.0	0.0	0.00	0.00	0.0	
2	400.0	0.00	0.00	400.0	0.0	0.0	0.00	0.00	0.0	
3	1224.6	12.37	163.86	1218.2	-85.2	24.6	1.50	163.86	-11.9	
4	5389.4	12.37	163.86	5286.4	-942.1	272.6	0.00	0.00	-131.5	
5	6007.9	0.00	0.00	5900.0	-1006.0	291.1	2.00	180.00	-140.4	
6	6256.4	0.00	0.00	6148.6	-1006.0	291.1	0.00	0.00	-140.4	
7	7383.6	90.17	269.64	6864.8	-1010.5	-427.2	8.00	269.64	570.8	
8	14053.0	90.17	269.64	6845.0	-1052.2	-7096.5	0.00	0.00	7174.0	BHL 500'FSL & 2170'FEL, Sec.9

**BHL 500'FSL & 2170'FEL, Sec.9**

Vertical Section at 261.57° (800 ft/in)



# **Bayswater Exploration & Production, LLC**

**SEC.10-T5N-R65W**

**Arellano 10-L Pad Sec.10-T5N-R65W**

**Arellano S-10-9HN**

**Wellbore #1**

**Plan: Plan #1 (11-11-14)**

## **Standard Planning Report**

**17 November, 2014**



**BAYSWATER**  
**EXPLORATION & PRODUCTION, LLC**

<b>Database:</b>	Landmark	<b>Local Co-ordinate Reference:</b>	Well Arellano S-10-9HN
<b>Company:</b>	Bayswater Exploration & Production, LLC	<b>TVD Reference:</b>	WELL @ 4640.0ft (RKB - 24')
<b>Project:</b>	SEC.10-T5N-R65W	<b>MD Reference:</b>	WELL @ 4640.0ft (RKB - 24')
<b>Site:</b>	Arellano 10-L Pad Sec.10-T5N-R65W	<b>North Reference:</b>	True
<b>Well:</b>	Arellano S-10-9HN	<b>Survey Calculation Method:</b>	Minimum Curvature
<b>Wellbore:</b>	Wellbore #1		
<b>Design:</b>	Plan #1 (11-11-14)		

<b>Project</b>	SEC.10-T5N-R65W, Weld County, CO		
<b>Map System:</b>	US State Plane 1983	<b>System Datum:</b>	Mean Sea Level
<b>Geo Datum:</b>	North American Datum 1983		Using Well Reference Point
<b>Map Zone:</b>	Colorado Northern Zone		

Site						Arellano 10-L Pad Sec.10-T5N-R65W											
Site Position:						Northing:			1,393,742.11 ft			Latitude:			40.411044		
From:			Lat/Long			Easting:			3,239,181.53ft			Longitude:			-104.641058		
Position Uncertainty:			0.0 ft			Slot Radius:			"			Grid Convergence:			0.55 °		

Well	Arellano S-10-9HN					
Well Position	+N-S	-112.6 ft	Northing:	1,393,629.13 ft	Latitude:	40.410735
	+E-W	-41.8 ft	Easting:	3,239,140.85 ft	Longitude:	-104.641208
Position Uncertainty		0.0 ft	Wellhead Elevation:	ft	Ground Level:	4,616.0 ft

<b>Wellbore</b>	Wellbore #1				
<b>Magnetics</b>	<b>Model Name</b>	<b>Sample Date</b>	<b>Declination (°)</b>	<b>Dip Angle (°)</b>	<b>Field Strength (nT)</b>
	IGRF2010	11/11/2014	8.34	66.96	52,792

<b>Design</b>	Plan #1 (11-11-14)			
<b>Audit Notes:</b>				
<b>Version:</b>	<b>Phase:</b>	PROTOTYPE	<b>Tie On Depth:</b>	0.0
<b>Vertical Section:</b>	<b>Depth From (TVD) (ft)</b>	<b>+N/-S (ft)</b>	<b>+E/-W (ft)</b>	<b>Direction (°)</b>
	0.0	0.0	0.0	261.57

<b>Plan Sections</b>										
Measured Depth (ft)	Inclination (°)	Azimuth (°)	Vertical Depth (ft)	+N/-S (ft)	+E/-W (ft)	Dogleg Rate (°/100ft)	Build Rate (°/100ft)	Turn Rate (°/100ft)	TFO (°)	Target
0.0	0.00	0.00	0.0	0.0	0.0	0.00	0.00	0.00	0.00	
400.0	0.00	0.00	400.0	0.0	0.0	0.00	0.00	0.00	0.00	
1,224.6	12.37	163.86	1,218.2	-85.2	24.6	1.50	1.50	0.00	163.86	
5,389.4	12.37	163.86	5,286.4	-942.1	272.6	0.00	0.00	0.00	0.00	
6,007.9	0.00	0.00	5,900.0	-1,006.0	291.1	2.00	-2.00	0.00	180.00	
6,256.4	0.00	0.00	6,148.6	-1,006.0	291.1	0.00	0.00	0.00	0.00	
7,383.6	90.17	269.64	6,864.8	-1,010.5	-427.2	8.00	8.00	0.00	269.64	
14,053.0	90.17	269.64	6,845.0	-1,052.2	-7,096.5	0.00	0.00	0.00	0.00	BHL 500'FSL & 217

<b>Database:</b>	Landmark	<b>Local Co-ordinate Reference:</b>	Well Arellano S-10-9HN
<b>Company:</b>	Bayswater Exploration & Production, LLC	<b>TVD Reference:</b>	WELL @ 4640.0ft (RKB - 24')
<b>Project:</b>	SEC.10-T5N-R65W	<b>MD Reference:</b>	WELL @ 4640.0ft (RKB - 24')
<b>Site:</b>	Arellano 10-L Pad Sec.10-T5N-R65W	<b>North Reference:</b>	True
<b>Well:</b>	Arellano S-10-9HN	<b>Survey Calculation Method:</b>	Minimum Curvature
<b>Wellbore:</b>	Wellbore #1		
<b>Design:</b>	Plan #1 (11-11-14)		

Planned Survey									
Measured Depth (ft)	Inclination (°)	Azimuth (°)	Vertical Depth (ft)	+N/-S (ft)	+E/-W (ft)	Vertical Section (ft)	Dogleg Rate (°/100ft)	Build Rate (°/100ft)	Turn Rate (°/100ft)
0.0	0.00	0.00	0.0	0.0	0.0	0.0	0.00	0.00	0.00
100.0	0.00	0.00	100.0	0.0	0.0	0.0	0.00	0.00	0.00
200.0	0.00	0.00	200.0	0.0	0.0	0.0	0.00	0.00	0.00
300.0	0.00	0.00	300.0	0.0	0.0	0.0	0.00	0.00	0.00
400.0	0.00	0.00	400.0	0.0	0.0	0.0	0.00	0.00	0.00
KOP - Start Build 1.50									
500.0	1.50	163.86	500.0	-1.3	0.4	-0.2	1.50	1.50	0.00
600.0	3.00	163.86	599.9	-5.0	1.5	-0.7	1.50	1.50	0.00
700.0	4.50	163.86	699.7	-11.3	3.3	-1.6	1.50	1.50	0.00
800.0	6.00	163.86	799.3	-20.1	5.8	-2.8	1.50	1.50	0.00
900.0	7.50	163.86	898.6	-31.4	9.1	-4.4	1.50	1.50	0.00
1,000.0	9.00	163.86	997.5	-45.2	13.1	-6.3	1.50	1.50	0.00
1,100.0	10.50	163.86	1,096.1	-61.4	17.8	-8.6	1.50	1.50	0.00
1,200.0	12.00	163.86	1,194.2	-80.2	23.2	-11.2	1.50	1.50	0.00
1,224.6	12.37	163.86	1,218.2	-85.2	24.6	-11.9	1.50	1.50	0.00
1,300.0	12.37	163.86	1,291.9	-100.7	29.1	-14.1	0.00	0.00	0.00
1,400.0	12.37	163.86	1,389.5	-121.3	35.1	-16.9	0.00	0.00	0.00
1,500.0	12.37	163.86	1,487.2	-141.8	41.0	-19.8	0.00	0.00	0.00
1,600.0	12.37	163.86	1,584.9	-162.4	47.0	-22.7	0.00	0.00	0.00
1,700.0	12.37	163.86	1,682.6	-183.0	52.9	-25.5	0.00	0.00	0.00
1,800.0	12.37	163.86	1,780.3	-203.6	58.9	-28.4	0.00	0.00	0.00
1,900.0	12.37	163.86	1,877.9	-224.1	64.9	-31.3	0.00	0.00	0.00
2,000.0	12.37	163.86	1,975.6	-244.7	70.8	-34.2	0.00	0.00	0.00
2,100.0	12.37	163.86	2,073.3	-265.3	76.8	-37.0	0.00	0.00	0.00
2,200.0	12.37	163.86	2,171.0	-285.9	82.7	-39.9	0.00	0.00	0.00
2,300.0	12.37	163.86	2,268.6	-306.4	88.7	-42.8	0.00	0.00	0.00
2,400.0	12.37	163.86	2,366.3	-327.0	94.6	-45.6	0.00	0.00	0.00
2,500.0	12.37	163.86	2,464.0	-347.6	100.6	-48.5	0.00	0.00	0.00
2,600.0	12.37	163.86	2,561.7	-368.2	106.5	-51.4	0.00	0.00	0.00
2,700.0	12.37	163.86	2,659.4	-388.7	112.5	-54.3	0.00	0.00	0.00
2,800.0	12.37	163.86	2,757.0	-409.3	118.4	-57.1	0.00	0.00	0.00
2,900.0	12.37	163.86	2,854.7	-429.9	124.4	-60.0	0.00	0.00	0.00
3,000.0	12.37	163.86	2,952.4	-450.5	130.4	-62.9	0.00	0.00	0.00
3,100.0	12.37	163.86	3,050.1	-471.1	136.3	-65.8	0.00	0.00	0.00
3,200.0	12.37	163.86	3,147.8	-491.6	142.3	-68.6	0.00	0.00	0.00
3,300.0	12.37	163.86	3,245.4	-512.2	148.2	-71.5	0.00	0.00	0.00
3,400.0	12.37	163.86	3,343.1	-532.8	154.2	-74.4	0.00	0.00	0.00
3,500.0	12.37	163.86	3,440.8	-553.4	160.1	-77.2	0.00	0.00	0.00
3,600.0	12.37	163.86	3,538.5	-573.9	166.1	-80.1	0.00	0.00	0.00
3,700.0	12.37	163.86	3,636.2	-594.5	172.0	-83.0	0.00	0.00	0.00
3,800.0	12.37	163.86	3,733.8	-615.1	178.0	-85.9	0.00	0.00	0.00
3,900.0	12.37	163.86	3,831.5	-635.7	183.9	-88.7	0.00	0.00	0.00
4,000.0	12.37	163.86	3,929.2	-656.2	189.9	-91.6	0.00	0.00	0.00
4,100.0	12.37	163.86	4,026.9	-676.8	195.8	-94.5	0.00	0.00	0.00
4,200.0	12.37	163.86	4,124.5	-697.4	201.8	-97.3	0.00	0.00	0.00
4,300.0	12.37	163.86	4,222.2	-718.0	207.8	-100.2	0.00	0.00	0.00
4,400.0	12.37	163.86	4,319.9	-738.5	213.7	-103.1	0.00	0.00	0.00
4,500.0	12.37	163.86	4,417.6	-759.1	219.7	-106.0	0.00	0.00	0.00
4,600.0	12.37	163.86	4,515.3	-779.7	225.6	-108.8	0.00	0.00	0.00
4,700.0	12.37	163.86	4,612.9	-800.3	231.6	-111.7	0.00	0.00	0.00
4,800.0	12.37	163.86	4,710.6	-820.8	237.5	-114.6	0.00	0.00	0.00
4,900.0	12.37	163.86	4,808.3	-841.4	243.5	-117.5	0.00	0.00	0.00
5,000.0	12.37	163.86	4,906.0	-862.0	249.4	-120.3	0.00	0.00	0.00
5,100.0	12.37	163.86	5,003.7	-882.6	255.4	-123.2	0.00	0.00	0.00

<b>Database:</b>	Landmark	<b>Local Co-ordinate Reference:</b>	Well Arellano S-10-9HN
<b>Company:</b>	Bayswater Exploration & Production, LLC	<b>TVD Reference:</b>	WELL @ 4640.0ft (RKB - 24')
<b>Project:</b>	SEC.10-T5N-R65W	<b>MD Reference:</b>	WELL @ 4640.0ft (RKB - 24')
<b>Site:</b>	Arellano 10-L Pad Sec.10-T5N-R65W	<b>North Reference:</b>	True
<b>Well:</b>	Arellano S-10-9HN	<b>Survey Calculation Method:</b>	Minimum Curvature
<b>Wellbore:</b>	Wellbore #1		
<b>Design:</b>	Plan #1 (11-11-14)		

Planned Survey									
Measured Depth (ft)	Inclination (°)	Azimuth (°)	Vertical Depth (ft)	+N/-S (ft)	+E/-W (ft)	Vertical Section (ft)	Dogleg Rate (°/100ft)	Build Rate (°/100ft)	Turn Rate (°/100ft)
5,200.0	12.37	163.86	5,101.3	-903.2	261.3	-126.1	0.00	0.00	0.00
5,300.0	12.37	163.86	5,199.0	-923.7	267.3	-128.9	0.00	0.00	0.00
5,389.4	12.37	163.86	5,286.3	-942.1	272.6	-131.5	0.00	0.00	0.00
<b>Start Drop -2.00</b>									
5,400.0	12.16	163.86	5,296.7	-944.3	273.2	-131.8	2.00	-2.00	0.00
5,500.0	10.16	163.86	5,394.8	-962.9	278.6	-134.4	2.00	-2.00	0.00
5,600.0	8.16	163.86	5,493.5	-978.2	283.0	-136.5	2.00	-2.00	0.00
5,700.0	6.16	163.86	5,592.7	-990.1	286.5	-138.2	2.00	-2.00	0.00
5,800.0	4.16	163.86	5,692.3	-998.8	289.0	-139.4	2.00	-2.00	0.00
5,900.0	2.16	163.86	5,792.2	-1,004.1	290.5	-140.2	2.00	-2.00	0.00
6,000.0	0.16	163.86	5,892.1	-1,006.0	291.1	-140.4	2.00	-2.00	0.00
6,007.9	0.00	0.00	5,900.0	-1,006.0	291.1	-140.4	2.00	-2.00	0.00
6,100.0	0.00	0.00	5,992.1	-1,006.0	291.1	-140.4	0.00	0.00	0.00
6,200.0	0.00	0.00	6,092.1	-1,006.0	291.1	-140.4	0.00	0.00	0.00
6,256.4	0.00	0.00	6,148.5	-1,006.0	291.1	-140.4	0.00	0.00	0.00
<b>KOP #2 - Start Build 8.00</b>									
6,300.0	3.48	269.64	6,192.1	-1,006.0	289.8	-139.1	7.99	7.99	0.00
6,400.0	11.48	269.64	6,291.2	-1,006.1	276.8	-126.2	8.00	8.00	0.00
6,500.0	19.48	269.64	6,387.5	-1,006.3	250.1	-99.8	8.00	8.00	0.00
6,600.0	27.48	269.64	6,479.1	-1,006.5	210.3	-60.4	8.00	8.00	0.00
6,700.0	35.48	269.64	6,564.3	-1,006.8	158.1	-8.7	8.00	8.00	0.00
6,800.0	43.48	269.64	6,641.5	-1,007.2	94.6	54.2	8.00	8.00	0.00
6,900.0	51.48	269.64	6,709.0	-1,007.7	20.9	127.1	8.00	8.00	0.00
7,000.0	59.48	269.64	6,765.6	-1,008.2	-61.4	208.6	8.00	8.00	0.00
7,100.0	67.48	269.64	6,810.2	-1,008.8	-150.8	297.1	8.00	8.00	0.00
7,200.0	75.48	269.64	6,841.9	-1,009.4	-245.6	390.9	8.00	8.00	0.00
7,300.0	83.48	269.64	6,860.2	-1,010.0	-343.8	488.2	8.00	8.00	0.00
7,383.6	90.17	269.64	6,864.8	-1,010.5	-427.2	570.8	8.00	8.00	0.00
<b>7"</b>									
7,400.0	90.17	269.64	6,864.7	-1,010.6	-443.6	587.0	0.00	0.00	0.00
7,500.0	90.17	269.64	6,864.4	-1,011.2	-543.6	686.0	0.00	0.00	0.00
7,600.0	90.17	269.64	6,864.1	-1,011.8	-643.6	785.1	0.00	0.00	0.00
7,700.0	90.17	269.64	6,863.8	-1,012.5	-743.6	884.1	0.00	0.00	0.00
7,800.0	90.17	269.64	6,863.6	-1,013.1	-843.6	983.1	0.00	0.00	0.00
7,900.0	90.17	269.64	6,863.3	-1,013.7	-943.6	1,082.1	0.00	0.00	0.00
8,000.0	90.17	269.64	6,863.0	-1,014.3	-1,043.6	1,181.1	0.00	0.00	0.00
8,100.0	90.17	269.64	6,862.7	-1,015.0	-1,143.6	1,280.1	0.00	0.00	0.00
8,200.0	90.17	269.64	6,862.4	-1,015.6	-1,243.6	1,379.1	0.00	0.00	0.00
8,300.0	90.17	269.64	6,862.1	-1,016.2	-1,343.6	1,478.1	0.00	0.00	0.00
8,400.0	90.17	269.64	6,861.8	-1,016.8	-1,443.6	1,577.1	0.00	0.00	0.00
8,500.0	90.17	269.64	6,861.5	-1,017.5	-1,543.6	1,676.1	0.00	0.00	0.00
8,600.0	90.17	269.64	6,861.2	-1,018.1	-1,643.6	1,775.1	0.00	0.00	0.00
8,700.0	90.17	269.64	6,860.9	-1,018.7	-1,743.6	1,874.1	0.00	0.00	0.00
8,800.0	90.17	269.64	6,860.6	-1,019.3	-1,843.6	1,973.2	0.00	0.00	0.00
8,900.0	90.17	269.64	6,860.3	-1,020.0	-1,943.6	2,072.2	0.00	0.00	0.00
9,000.0	90.17	269.64	6,860.0	-1,020.6	-2,043.6	2,171.2	0.00	0.00	0.00
9,100.0	90.17	269.64	6,859.7	-1,021.2	-2,143.6	2,270.2	0.00	0.00	0.00
9,200.0	90.17	269.64	6,859.4	-1,021.8	-2,243.6	2,369.2	0.00	0.00	0.00
9,300.0	90.17	269.64	6,859.1	-1,022.5	-2,343.6	2,468.2	0.00	0.00	0.00
9,400.0	90.17	269.64	6,858.8	-1,023.1	-2,443.6	2,567.2	0.00	0.00	0.00
9,500.0	90.17	269.64	6,858.5	-1,023.7	-2,543.6	2,666.2	0.00	0.00	0.00
9,600.0	90.17	269.64	6,858.2	-1,024.3	-2,643.6	2,765.2	0.00	0.00	0.00
9,700.0	90.17	269.64	6,857.9	-1,025.0	-2,743.6	2,864.2	0.00	0.00	0.00

<b>Database:</b>	Landmark	<b>Local Co-ordinate Reference:</b>	Well Arellano S-10-9HN
<b>Company:</b>	Bayswater Exploration & Production, LLC	<b>TVD Reference:</b>	WELL @ 4640.0ft (RKB - 24')
<b>Project:</b>	SEC.10-T5N-R65W	<b>MD Reference:</b>	WELL @ 4640.0ft (RKB - 24')
<b>Site:</b>	Arellano 10-L Pad Sec.10-T5N-R65W	<b>North Reference:</b>	True
<b>Well:</b>	Arellano S-10-9HN	<b>Survey Calculation Method:</b>	Minimum Curvature
<b>Wellbore:</b>	Wellbore #1		
<b>Design:</b>	Plan #1 (11-11-14)		

## Planned Survey

Measured Depth (ft)	Inclination (°)	Azimuth (°)	Vertical Depth (ft)	+N/-S (ft)	+E/-W (ft)	Vertical Section (ft)	Dogleg Rate (°/100ft)	Build Rate (°/100ft)	Turn Rate (°/100ft)
9,800.0	90.17	269.64	6,857.6	-1,025.6	-2,843.6	2,963.2	0.00	0.00	0.00
9,900.0	90.17	269.64	6,857.3	-1,026.2	-2,943.6	3,062.2	0.00	0.00	0.00
10,000.0	90.17	269.64	6,857.0	-1,026.8	-3,043.6	3,161.3	0.00	0.00	0.00
10,100.0	90.17	269.64	6,856.7	-1,027.5	-3,143.6	3,260.3	0.00	0.00	0.00
10,200.0	90.17	269.64	6,856.4	-1,028.1	-3,243.6	3,359.3	0.00	0.00	0.00
10,300.0	90.17	269.64	6,856.1	-1,028.7	-3,343.6	3,458.3	0.00	0.00	0.00
10,400.0	90.17	269.64	6,855.8	-1,029.3	-3,443.6	3,557.3	0.00	0.00	0.00
10,500.0	90.17	269.64	6,855.5	-1,030.0	-3,543.6	3,656.3	0.00	0.00	0.00
10,600.0	90.17	269.64	6,855.2	-1,030.6	-3,643.6	3,755.3	0.00	0.00	0.00
10,700.0	90.17	269.64	6,854.9	-1,031.2	-3,743.6	3,854.3	0.00	0.00	0.00
10,800.0	90.17	269.64	6,854.7	-1,031.8	-3,843.6	3,953.3	0.00	0.00	0.00
10,900.0	90.17	269.64	6,854.4	-1,032.5	-3,943.6	4,052.3	0.00	0.00	0.00
11,000.0	90.17	269.64	6,854.1	-1,033.1	-4,043.6	4,151.3	0.00	0.00	0.00
11,100.0	90.17	269.64	6,853.8	-1,033.7	-4,143.5	4,250.3	0.00	0.00	0.00
11,200.0	90.17	269.64	6,853.5	-1,034.3	-4,243.5	4,349.4	0.00	0.00	0.00
11,300.0	90.17	269.64	6,853.2	-1,035.0	-4,343.5	4,448.4	0.00	0.00	0.00
11,400.0	90.17	269.64	6,852.9	-1,035.6	-4,443.5	4,547.4	0.00	0.00	0.00
11,500.0	90.17	269.64	6,852.6	-1,036.2	-4,543.5	4,646.4	0.00	0.00	0.00
11,600.0	90.17	269.64	6,852.3	-1,036.8	-4,643.5	4,745.4	0.00	0.00	0.00
11,700.0	90.17	269.64	6,852.0	-1,037.5	-4,743.5	4,844.4	0.00	0.00	0.00
11,800.0	90.17	269.64	6,851.7	-1,038.1	-4,843.5	4,943.4	0.00	0.00	0.00
11,900.0	90.17	269.64	6,851.4	-1,038.7	-4,943.5	5,042.4	0.00	0.00	0.00
12,000.0	90.17	269.64	6,851.1	-1,039.3	-5,043.5	5,141.4	0.00	0.00	0.00
12,100.0	90.17	269.64	6,850.8	-1,040.0	-5,143.5	5,240.4	0.00	0.00	0.00
12,200.0	90.17	269.64	6,850.5	-1,040.6	-5,243.5	5,339.4	0.00	0.00	0.00
12,300.0	90.17	269.64	6,850.2	-1,041.2	-5,343.5	5,438.4	0.00	0.00	0.00
12,400.0	90.17	269.64	6,849.9	-1,041.8	-5,443.5	5,537.4	0.00	0.00	0.00
12,500.0	90.17	269.64	6,849.6	-1,042.5	-5,543.5	5,636.5	0.00	0.00	0.00
12,600.0	90.17	269.64	6,849.3	-1,043.1	-5,643.5	5,735.5	0.00	0.00	0.00
12,700.0	90.17	269.64	6,849.0	-1,043.7	-5,743.5	5,834.5	0.00	0.00	0.00
12,800.0	90.17	269.64	6,848.7	-1,044.3	-5,843.5	5,933.5	0.00	0.00	0.00
12,900.0	90.17	269.64	6,848.4	-1,045.0	-5,943.5	6,032.5	0.00	0.00	0.00
13,000.0	90.17	269.64	6,848.1	-1,045.6	-6,043.5	6,131.5	0.00	0.00	0.00
13,100.0	90.17	269.64	6,847.8	-1,046.2	-6,143.5	6,230.5	0.00	0.00	0.00
13,200.0	90.17	269.64	6,847.5	-1,046.8	-6,243.5	6,329.5	0.00	0.00	0.00
13,300.0	90.17	269.64	6,847.2	-1,047.5	-6,343.5	6,428.5	0.00	0.00	0.00
13,400.0	90.17	269.64	6,846.9	-1,048.1	-6,443.5	6,527.5	0.00	0.00	0.00
13,500.0	90.17	269.64	6,846.6	-1,048.7	-6,543.5	6,626.5	0.00	0.00	0.00
13,600.0	90.17	269.64	6,846.3	-1,049.3	-6,643.5	6,725.5	0.00	0.00	0.00
13,700.0	90.17	269.64	6,846.0	-1,050.0	-6,743.5	6,824.6	0.00	0.00	0.00
13,800.0	90.17	269.64	6,845.8	-1,050.6	-6,843.5	6,923.6	0.00	0.00	0.00
13,900.0	90.17	269.64	6,845.5	-1,051.2	-6,943.5	7,022.6	0.00	0.00	0.00
14,000.0	90.17	269.64	6,845.2	-1,051.8	-7,043.5	7,121.6	0.00	0.00	0.00
14,053.0	90.17	269.64	6,845.0	-1,052.2	-7,096.5	7,174.0	0.00	0.00	0.00

<b>Database:</b>	Landmark	<b>Local Co-ordinate Reference:</b>	Well Arellano S-10-9HN
<b>Company:</b>	Bayswater Exploration & Production, LLC	<b>TVD Reference:</b>	WELL @ 4640.0ft (RKB - 24')
<b>Project:</b>	SEC.10-T5N-R65W	<b>MD Reference:</b>	WELL @ 4640.0ft (RKB - 24')
<b>Site:</b>	Arellano 10-L Pad Sec.10-T5N-R65W	<b>North Reference:</b>	True
<b>Well:</b>	Arellano S-10-9HN	<b>Survey Calculation Method:</b>	Minimum Curvature
<b>Wellbore:</b>	Wellbore #1		
<b>Design:</b>	Plan #1 (11-11-14)		

Targets									
Target Name	Dip Angle (°)	Dip Dir. (°)	TVD (ft)	+N/-S (ft)	+E/-W (ft)	Northing (ft)	Easting (ft)	Latitude	Longitude
- hit/miss target									
- Shape									
BHL 500'FSL & 2170'I	0.00	0.00	6,845.0	-1,052.2	-7,096.5	1,392,508.30	3,232,054.92	40.407844	-104.666691
- plan hits target center									
- Point									
SHL 1509'FSL & 330'I	0.00	0.00	1.0	0.0	0.0	1,393,629.14	3,239,140.85	40.410735	-104.641208
- plan hits target center									
- Point									

Casing Points					
Measured Depth (ft)	Vertical Depth (ft)	Name	Casing Diameter (")	Hole Diameter (")	
7,383.6	6,864.8	7"	7	7-1/2	

Plan Annotations				
Measured Depth (ft)	Vertical Depth (ft)	Local Coordinates +N/-S (ft)	+E/-W (ft)	Comment
400.0	400.0	0.0	0.0	KOP - Start Build 1.50
5,389.4	5,286.4	-85.2	24.6	Start Drop -2.00
6,256.4	6,148.6	-942.1	272.6	KOP #2 - Start Build 8.00
14,053.0	6,845.0	-1,006.0	291.1	TD at 14053.0